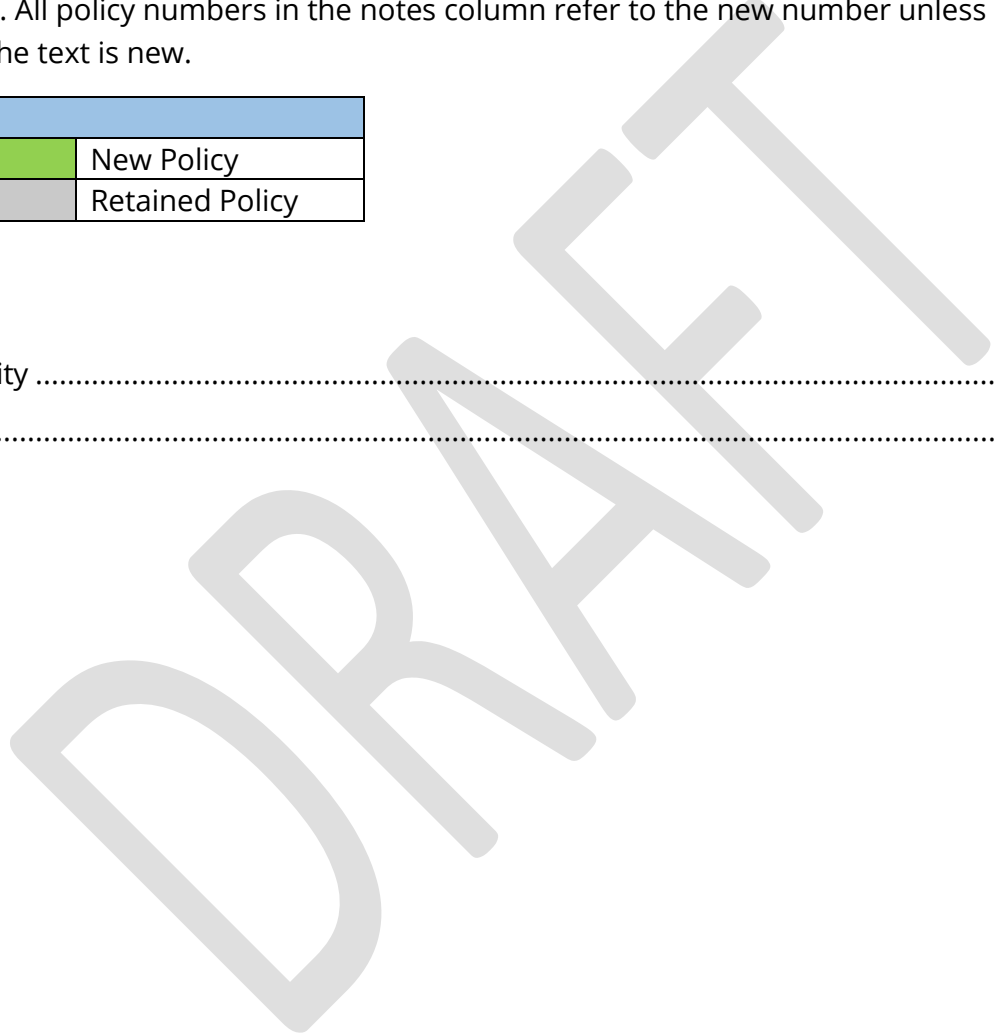


This packet includes proposed amendments to Arts and Culture policies in the BelRed Subarea Plan. The “New Number” column reflects proposed policy enumeration. All policy numbers in the notes column refer to the new number unless noted. ~~Strikethrough~~ means the text is deleted. Underline means the text is new.

Key			
	Repealed Policy		New Policy
	Modified Policy		Retained Policy

Table of Contents

Arts, and Culture, and Creativity	2
Implementation	5



New Number	Old Number	Proposed Policy Amendment	Reason for Change/CPP/Note
Arts, and Culture, and Creativity			
Goal: To identify build and sustain BelRed as a destination for the creative and innovative communities, anchored by the BelRed Arts District with a wealth of engaging and affordable arts and cultural spaces, events and programs, creative businesses, and community-serving organizations and realize opportunities to integrate arts and cultural works and attractions into Bel-Red.			
Organization			
S-BR-66		<u>Grow the creative capacity of the Arts District by providing operational support and educational resources to organizations supporting its growth, funding and management.</u>	Note: Added to support community based organizations.
Visibility			
S-BR-67	S-BR-46	<u>Provide funding for a wide range of public art projects and events that explore the intersection of art and technology, draw attention to the Arts District, spark creative placemaking, and reinforce the identity of BelRed as a cutting-edge creative destination. public art and cultural activities in the Bel-Red area.</u>	Note: Updated to clarify policy intent.
S-BR-68	S-BR-47	<u>Promote-Integrate public art, performance, and/or creative activity spaces cultural activities and urban design that reflect the Bel-Red’s area’s creative character, heritage, and ecology, with emphasis in the following areas: a. Integration of public art into publicly accessible spaces, both privately and publicly developed; b. Inclusion of public art in transportation projects, including transit projects; and</u>	Note: Updated to clarify policy intent and be more inclusive of all arts and cultural needs.

New Number	Old Number	Proposed Policy Amendment	Reason for Change/CPP/Note
		<p>c. <u>Incorporation of public art in interpretation and celebration of into public and publicly accessible indoor and outdoor spaces, and building and wall facades, especially those adjacent to and visible from streets and transit corridors, and in new and existing street infrastructure, transit facilities and parks.</u> stream corridor improvements and other environmental enhancements.</p>	
S-BR-69	S-BR-50	<p>Explore opportunities for traditional and technology based media to create a range of artistic expression that is tied to and complements the area’s economic development. <u>Invest in technology-based art that fosters creative experimentation, enhances the public experience, and reinforces the identity of the Arts District as a cutting-edge creative destination.</u> Discussion: The Bel-Red area’s proximity to high technology uses may create significant opportunities for innovative artistic expression, tying artist activities to the area’s broader economic development.</p>	<p>Note: Updated to clarify terminology and policy intent. Removed discussion; elements of which may be incorporated into preceding narrative.</p>
Creative Space			
S-BR-70	S-BR-44	<p><u>Secure long-term affordable arts and cultural space in the Arts District through development incentives, grants for facility upgrades, direct investment, and initiatives that serve as a pathway to facility ownership.</u> Encourage artists, arts and cultural organizations, and arts related uses to locate in the</p>	<p>Note: Updated to clarify policy intent.</p>

New Number	Old Number	Proposed Policy Amendment	Reason for Change/CPP/Note
		<p>Bel-Red area, capitalizing on proximity to existing arts uses and availability of suitable spaces. Encourage major arts and education institutions to locate in the Bel-Red area.</p>	
S-BR-71	S-BR-45	<p><u>Designate the area shown in Figure S-BR.2 as the BelRed Arts District Intensive Area to prioritize incentives for the provision of affordable space for arts and cultural uses.</u> Encourage the development of an arts/cultural district near 136th Place NE, as shown on the Bel-Red Land Use Plan map, Figure S-BR.1.</p> <p>Discussion: This arts/cultural district would build upon existing arts and cultural uses, and expand out to include additional opportunities for arts education, rehearsal, performance, and production activities. Land use incentives and public investments would be used to help achieve these outcomes</p>	<p>Note: Updated to clarify and expand policy intent. Removed discussion; elements of which may be incorporated into preceding narrative.</p>
S-BR-72	S-BR-48	<p>Promote <u>the development of flexible and affordable artist live/and-work space for artists and work/live units in through provisions that lower costs, enable conversion of existing buildings, and allow for arts-focused retail and artisanal manufacturing</u> the Bel-Red area by encouraging the creation of live/work and work/live units, in adaptive reuse of existing buildings or in new development.</p>	<p>Note: Updated to clarify policy intent.</p>

New Number	Old Number	Proposed Policy Amendment	Reason for Change/CPP/Note
	S-BR-49	Encourage arts uses as appropriate transitional uses for existing buildings or areas, as Bel-Red evolves over time.	Note: Removed outdated policy.
S-BR-73		<u>Stimulate the development of affordable artist housing through public-private partnerships within the BelRed Arts District Intensive Area.</u>	Note: Added to support provision of space for affordable artist housing.
Community Connection			
S-BR-74		<u>Develop a dedicated central meeting space in the Arts District for events, classes, programs, and other arts uses.</u>	Note: Added to support community connection.
S-BR-75		<u>Support programs and events that facilitate collaboration between artists, other creatives, and the broader community to reinforce BelRed's identity as an innovative creative destination.</u>	Note: Added to support community connection.
S-BR-76		<u>Provide for infrastructure in public and publicly accessible spaces such as electrical hookup, stages, and lighting to support artistic performance and events.</u>	Note: Added to support community connection.
S-BR-77		<u>Support the proliferation of arts and community events by providing grants, simplifying street closure and event permitting, lowering fees, and other initiatives.</u>	Note: Added to support community connection.
Implementation			
Goal: To ensure an ongoing and effective process, with the right tools available, to result in effective implementation of the BelRed subarea vision.			

New Number	Old Number	Proposed Policy Amendment	Reason for Change/CPP/Note
	S-BR-84	Encourage business and property owners to support the ongoing development of the Bel-Red area through a business improvement organization.	Note: Removed action, which can be included in a functional plan rather than in a subarea policy plan.

DRAFT

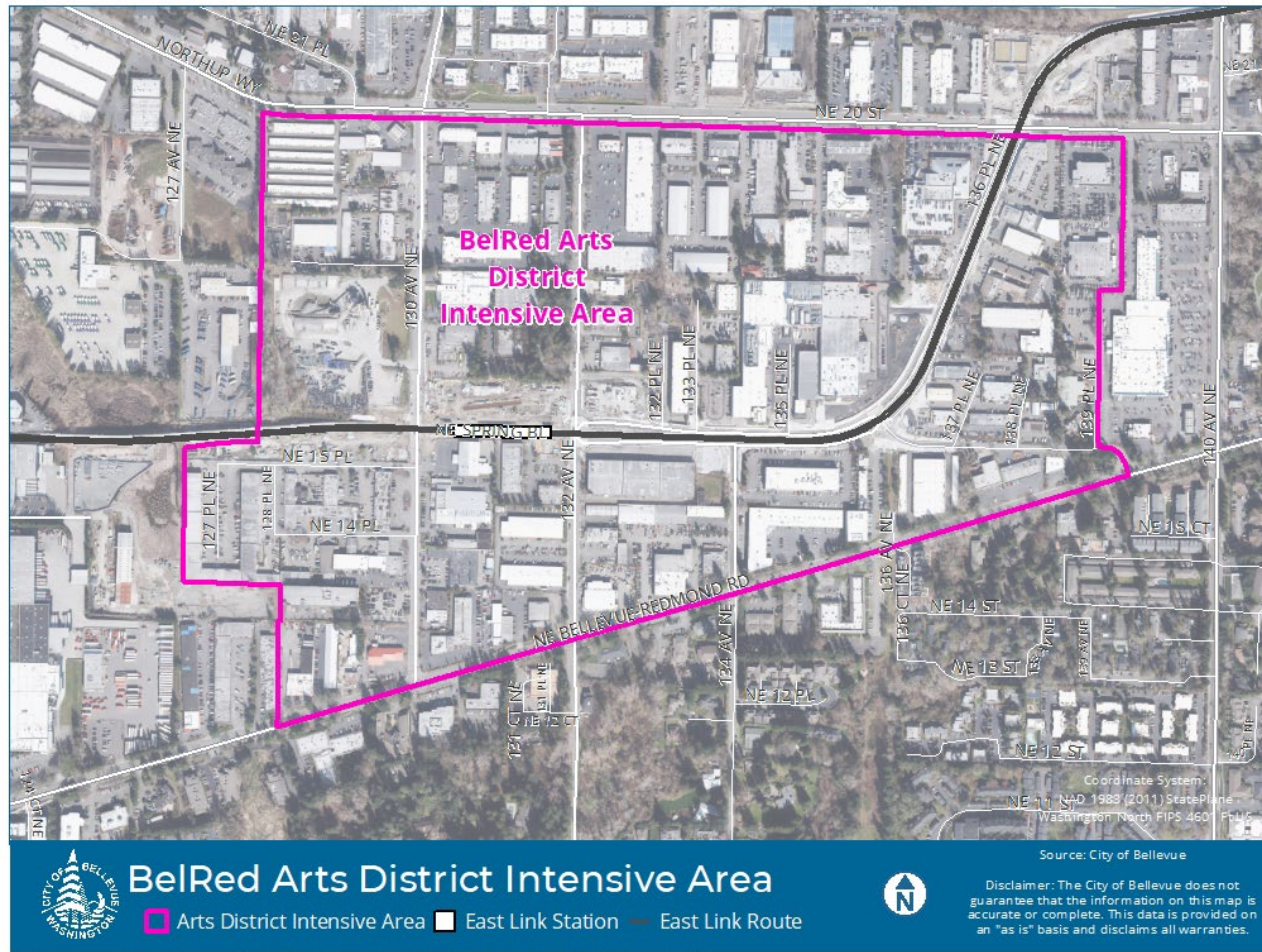


Figure S-BR.2
BelRed Arts District Intensive Area