

Weowna Park Old-Growth Enhancements

Curtis Kukal, AWB ®
Park Ranger & Environmental
Programs Coordinator

November 14, 2023



Bellevue Parks &
Community Services



The Natural Resources Division

- ▶ Environmental Programs
- ▶ Forest Management
- ▶ Greenways & Trails
- ▶ Irrigation & Water Conservation
- ▶ Street Trees & Arterial Landscapes



NR Division Volunteer Program

- ▶ Stewardship Saturdays
- ▶ Mid-week projects
- ▶ Trail Stewards
- ▶ Bellevue Naturalist Program
- ▶ Eagle Scout Service Projects
- ▶ Special Events
 - MLK Jr. Day of Service
 - Earth Day
 - National Trails Day
 - Bellevue Arbor Day



Bellevue Naturalist Program

- ▶ In-depth 11-week training
- ▶ 179 volunteers trained since 2010
- ▶ Volunteers give back 100 hours to the City of Bellevue in support of our natural resources
- ▶ Diverse array of volunteer opportunities



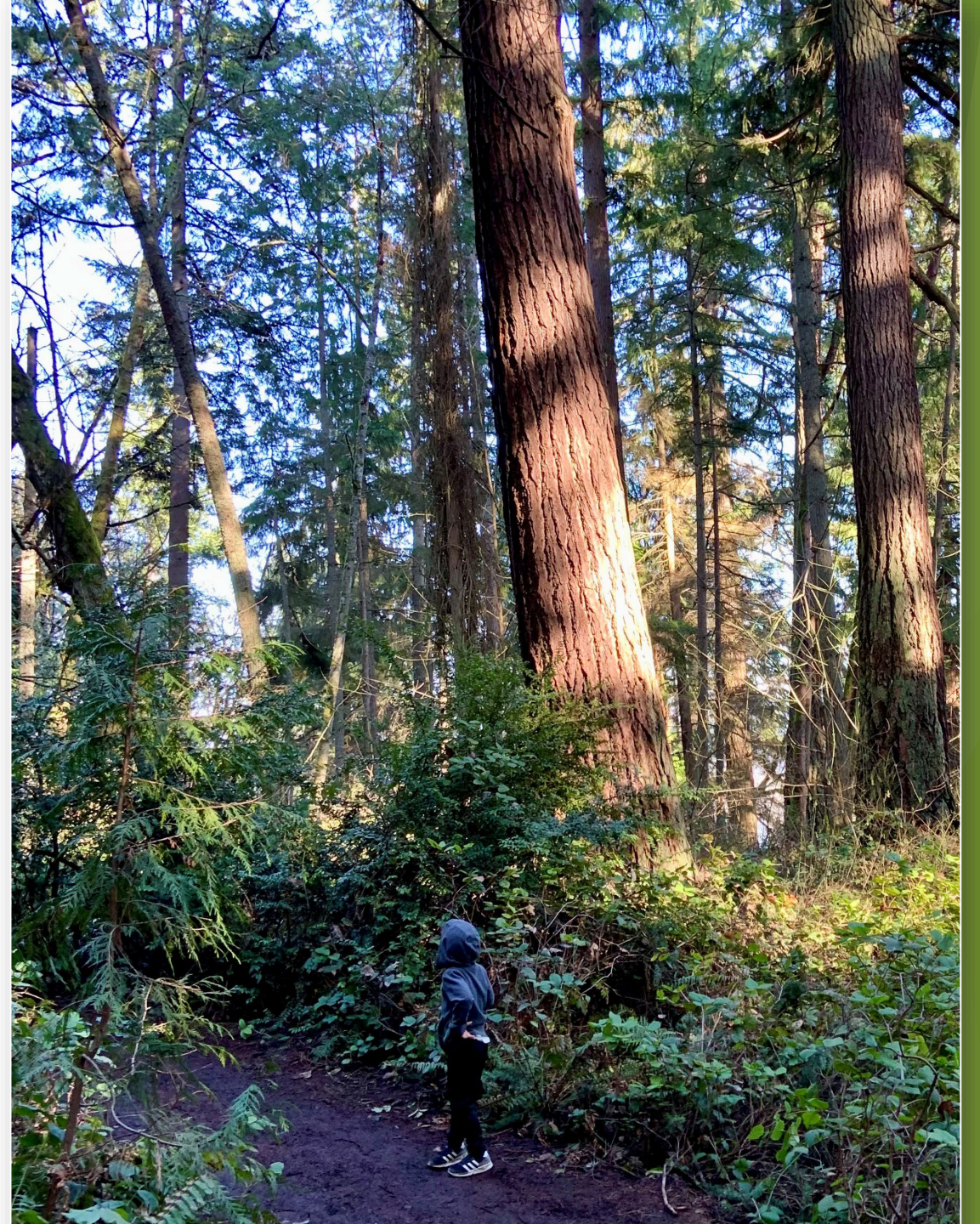
Project Background

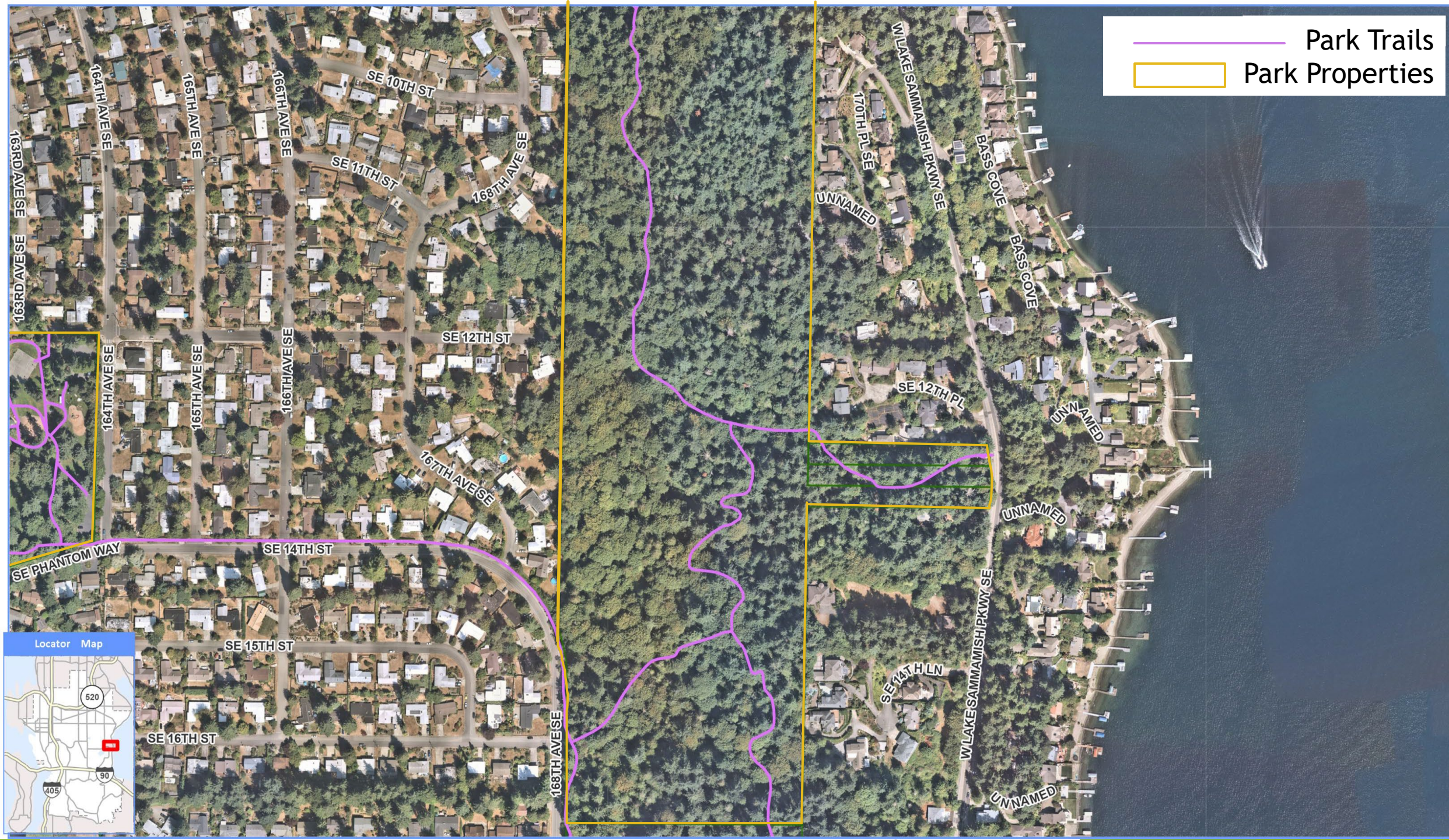
- ▶ Previous “Adopt-A-Site” areas by the Bellevue Naturalist Team
 - Wilburton Hill Park
 - Lewis Creek Park
- ▶ Seeking a new location after completing work at these sites
- ▶ Lessons learned to apply to next location



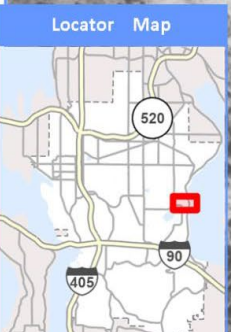
Weowna Park

- ▶ 93-acre forested open space
- ▶ Irreplaceable old-growth resources
 - Unique in Bellevue, extremely rare in the Puget Sound lowlands
- ▶ Light and moderate infestations of noxious weeds
- ▶ Site is unsuitable for large volunteer groups





1936

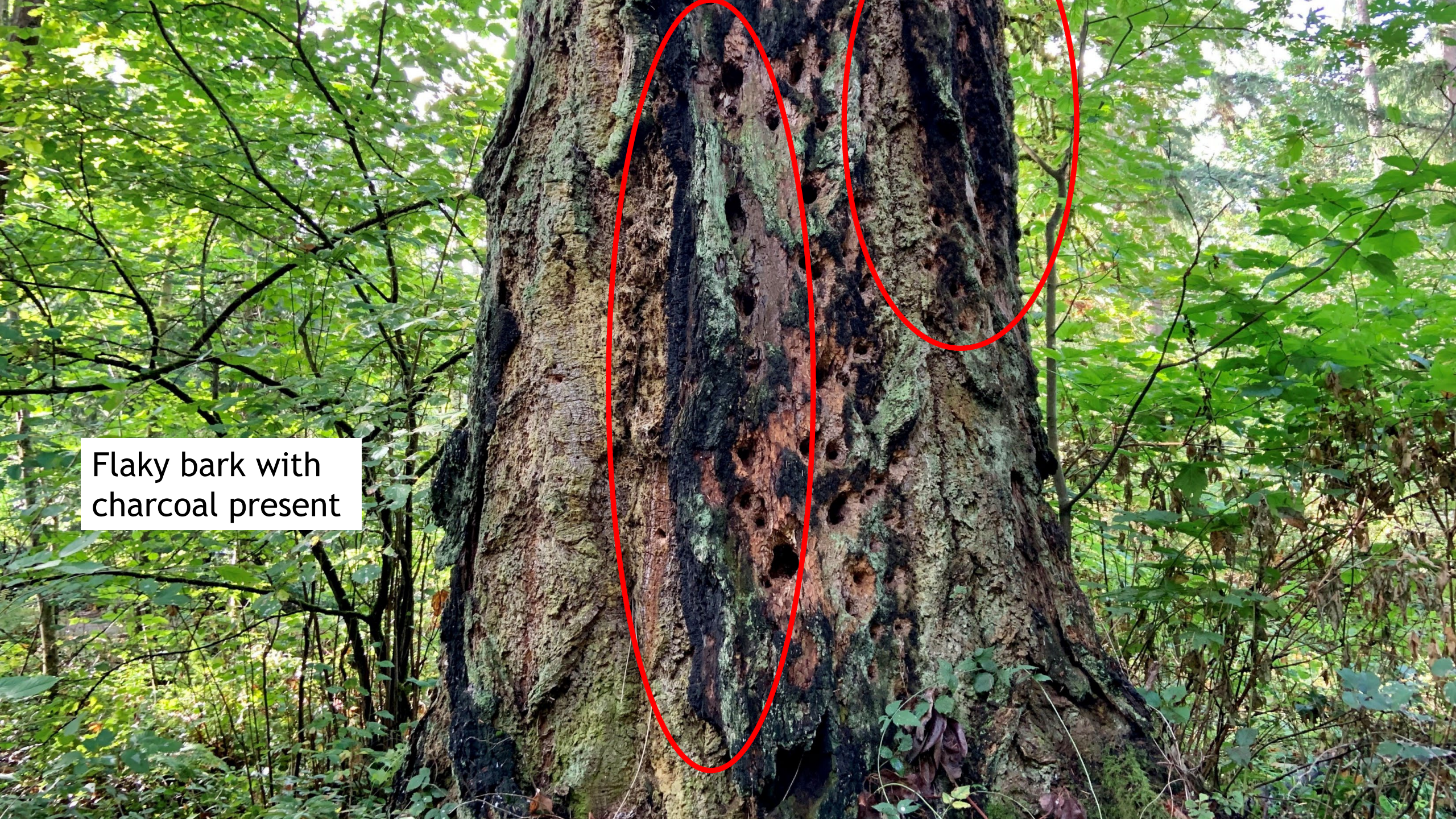




No knot/whorl
indicators visible in
lower third of tree



Soft, flay bark with
deep fissures

A photograph of a tree trunk in a forest. The bark is flaky and has a dark, charred appearance in some areas. Two red ovals are drawn on the image, highlighting specific sections of the bark. The background is filled with green foliage and other trees.

Flaky bark with
charcoal present



Large and/or gnarly
epicormic branches



Branch of massive proportion

FLATField Manual

The Forest Landscape Assessment Tool



GREEN
CITIES
RESEARCH
ALLIANCE

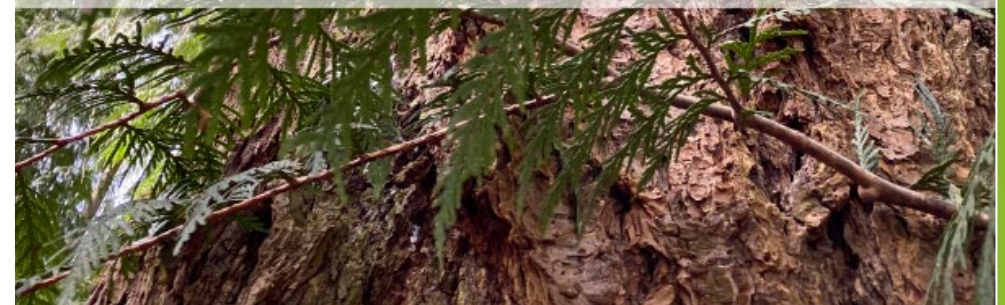
King County Parks **Your
Big Backyard** King County

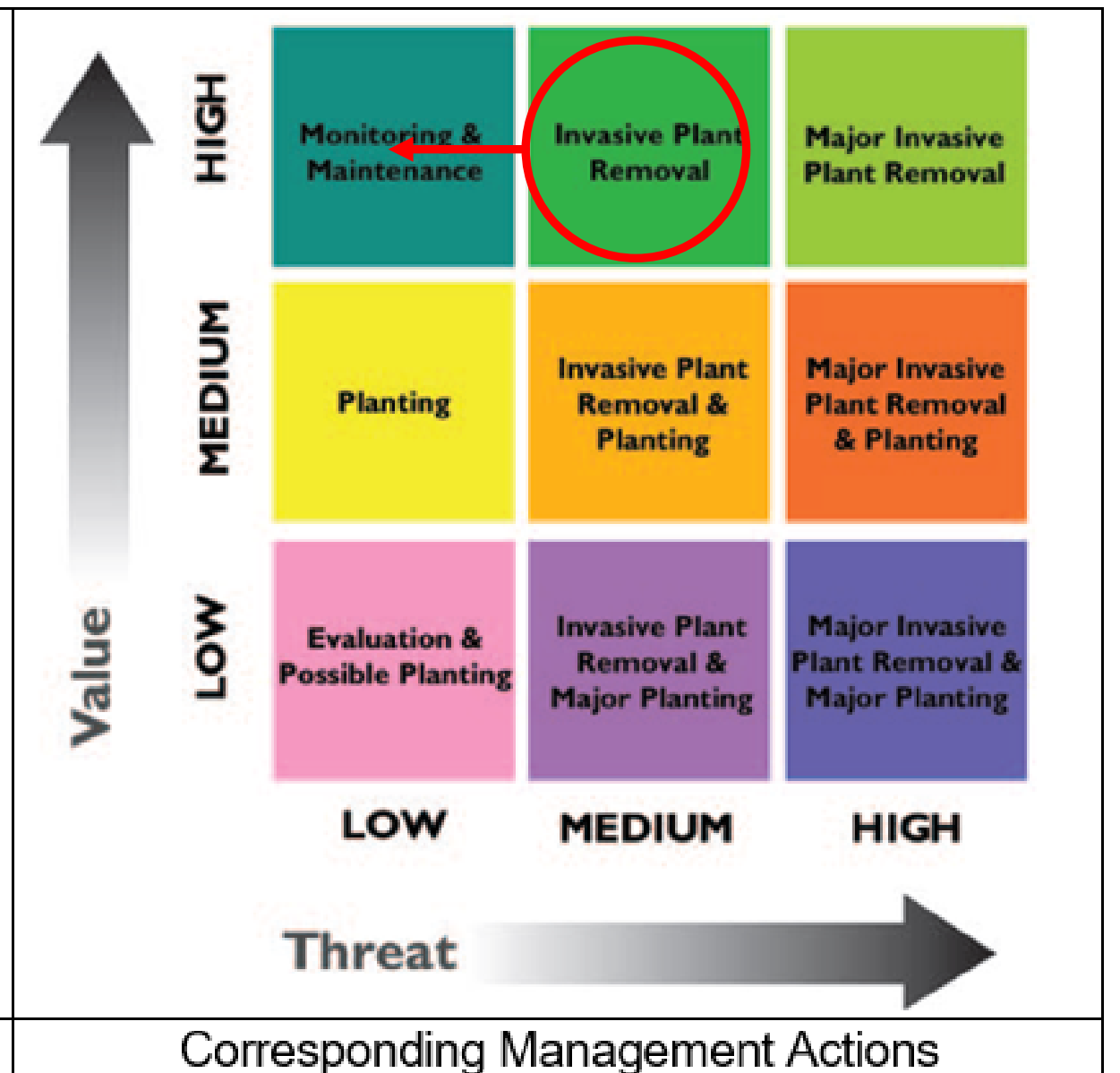
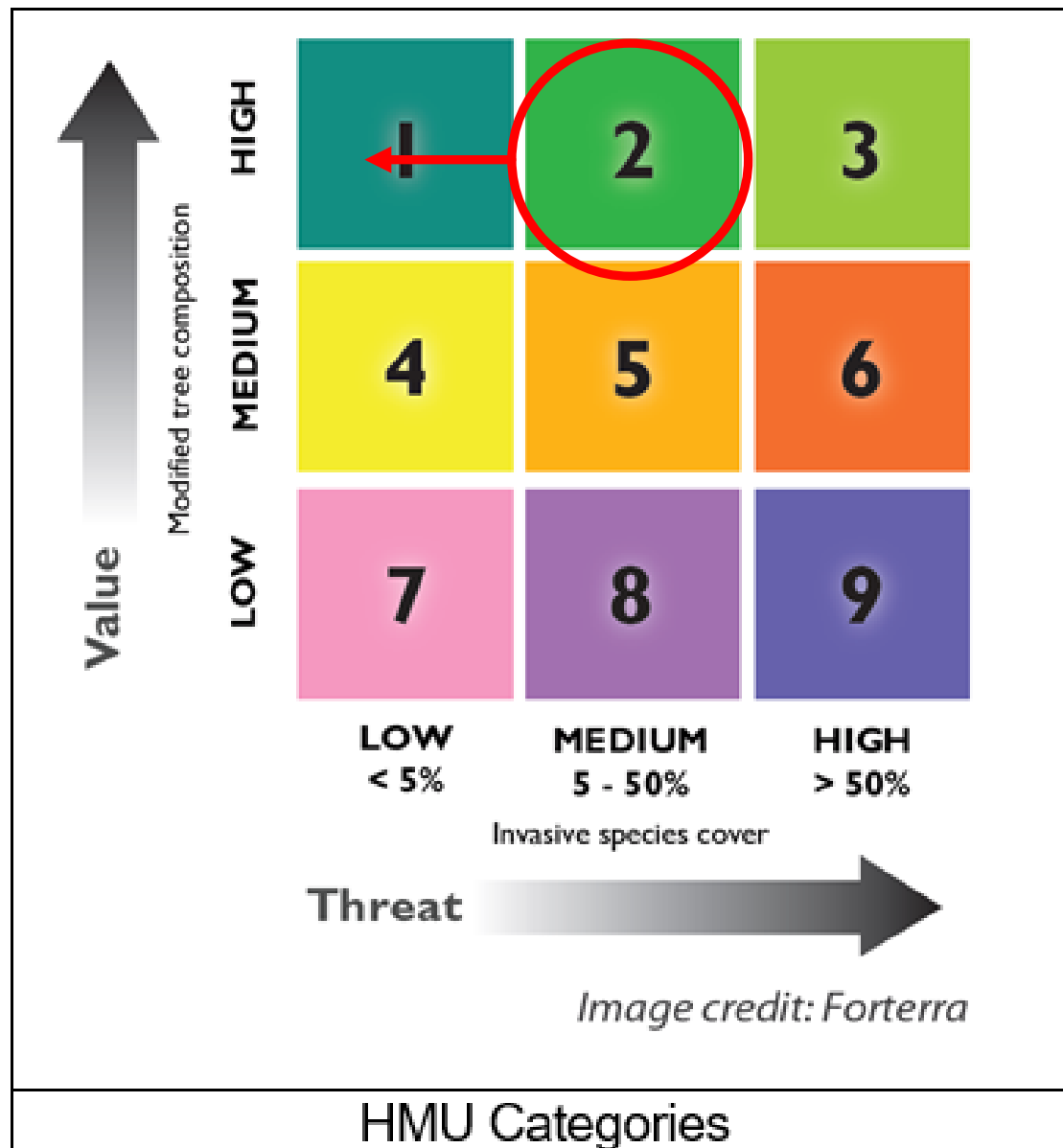
Department of Natural Resources and Parks
Parks and Recreation Division



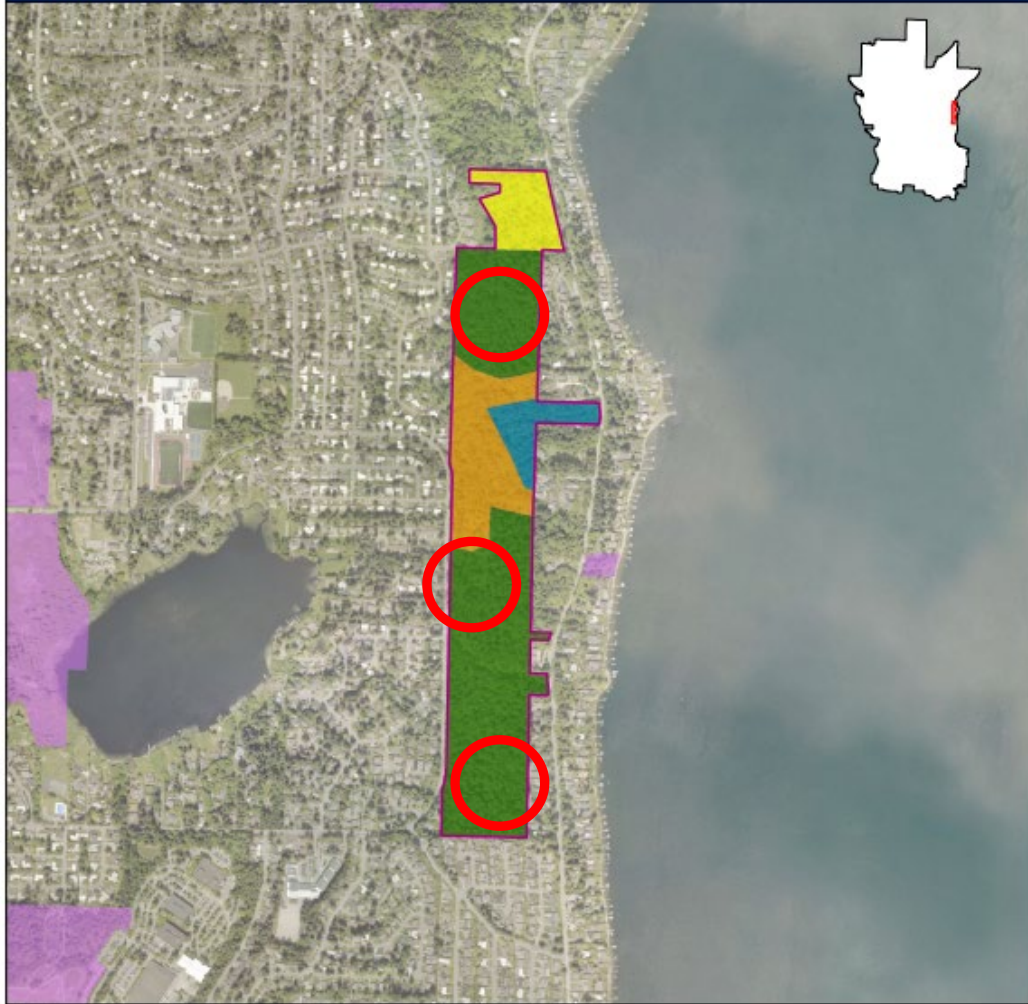
BELLEVUE NATURAL RESOURCE STEWARDSHIP PLAN

2022





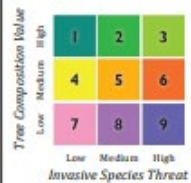
Bellevue Forest Health Assessment



Weowna Park

1420 168th Avenue SE

Tree-age Values



- Hardscaped or Landscaped
- Shoreline
- Open Water

- Target Park
- Other Parks in Study



Restoration Treatments





Integrated Approach to Restoration

- ▶ Bellevue Naturalist Volunteers
- ▶ Department Staff
- ▶ Contracted Services
- ▶ Washington Conservation Corps (WCC) Team
- ▶ Bellevue Well KEPT (Kids Environmental Project Training) Summer Interns



Benefits to this Approach

- ▶ Deeply connects Bellevue residents with the management of the parks system
- ▶ Additive forest restoration
- ▶ Overall forest health moves to highest category
- ▶ Highly efficient and cost-effective
- ▶ Small groups of highly-capable volunteers going where larger groups can't
- ▶ Integrates the skillsets and time of both volunteers and professional staff
- ▶ Detail-oriented, repeat treatments



Progress

- ▶ Since the project began in 2021:
 - ▶ 50 Bellevue Naturalists volunteers have given 346 hours at two restoration areas
 - ▶ Restoration treatments completed on 7.3 acres of forest
 - ▶ 4.87 acres at 168th Ave SE Restoration Area (100%)
 - ▶ 2.5 acres (75%) at Heron's Gate Restoration Area
 - ▶ Woody invasives pre-treatment completed at Southern Stand Restoration Area by Well KEPT 2023 (10%)





Park Trails
City Parks

Restoration
status





Mountain beaver

Peromyscus spp.
Mouse



Black-tailed Deer



Bobcat



Questions?



Bellevue Parks &
Community Services