

An aerial photograph of Bellevue, Washington, showing the city skyline in the background and Meydenbauer Bay Park in the foreground. The park features a large marina with numerous boats docked at a curved pier. The text 'Meydenbauer Bay Park' is overlaid in large white letters, with a horizontal line underneath it.

Meydenbauer Bay Park

PHASE 2

September 18, 2024

Parks & Community Services Board



Bellevue Parks &
Community Services



Meydenbauer Bay

PARK AND LAND USE PLAN

Adopted by Council
December 13, 2010
Resolution No. 8182

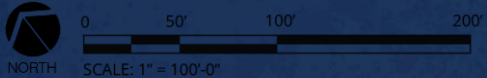
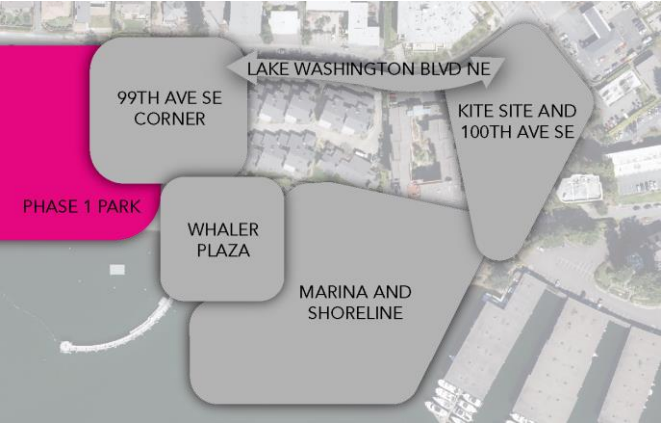
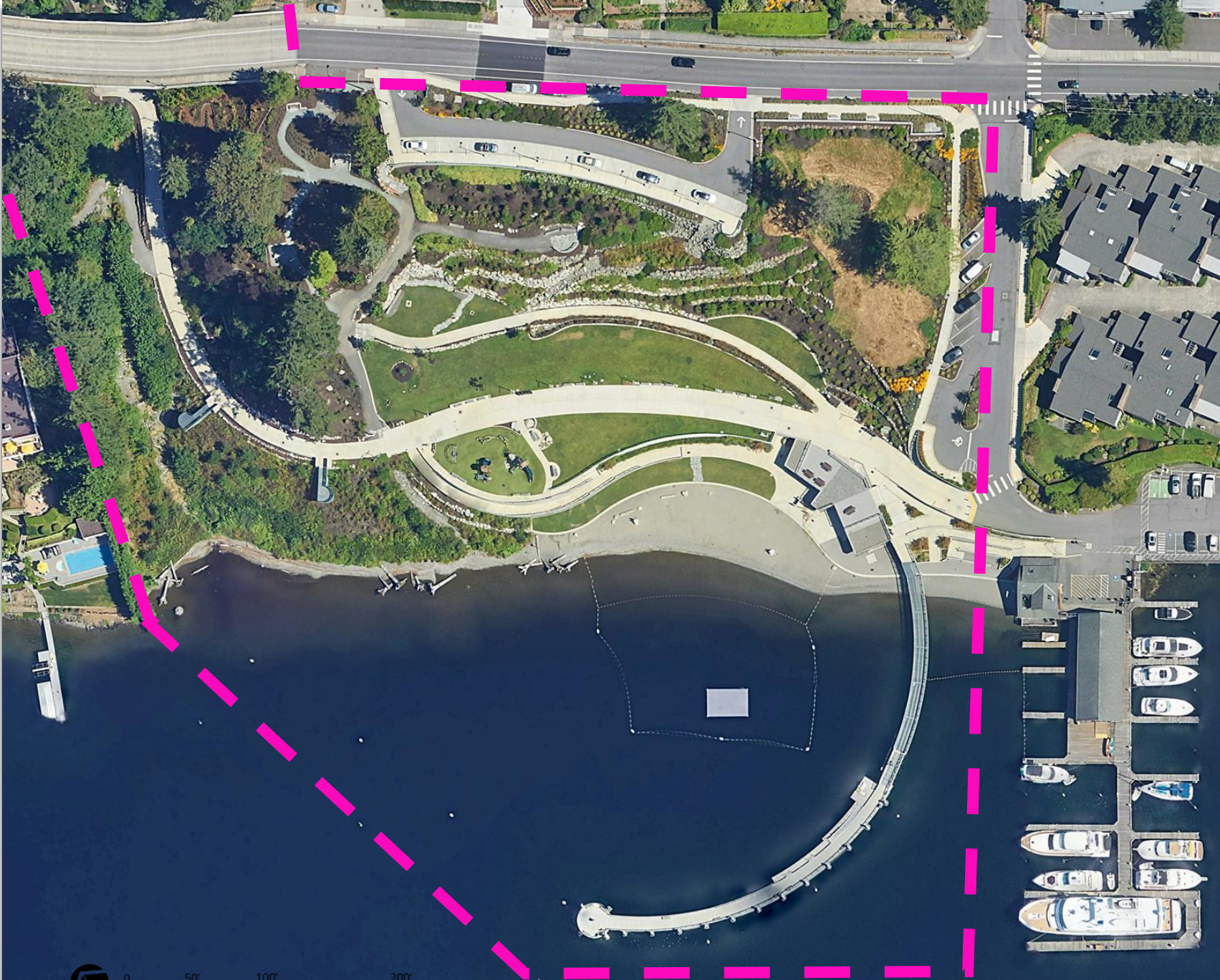


Meydenbauer Bay Park

2010 Adopted Master Plan



Meydenbauer Bay Park Phase 1 Development



Community Engagement 2023-2024



- Project web-sites to share updates and capture community feedback.
- Signage in the park.
- 5,000 visits to the website,
- 375 views of the project informational video – How the park has evolved
- 300 at 11 pop-up events in the summer-winter.
- 820 responses to our last survey Materials provided in top 8 languages

Community Engagement 2023 - 2024



Design Priorities

2010 Planning Principles:

- Remarkable Shoreline Experience
- Spectrum of Activities
- Complementary Land Uses
- Physical and Visual Access
- Pedestrian Priority
- Economic Vitality
- Superior Design
- Environmental Stewardship
- History
- Neighborhood Enhancement
- Coordinated Planning
- Commitment to Implement

2023-24 Community Priorities:

- **Strengthen Pedestrian Connections**
- **Provide Universal Access**
- **Provide Parking**
- **Manage Overcrowding**
- **Enhance Safety and Comfort**
- **Emphasize Nature and Views**
- **Enhance Public Boat Access**
- **Enhance Beach Safety and Use**
- **Provide a Variety of Amenities**

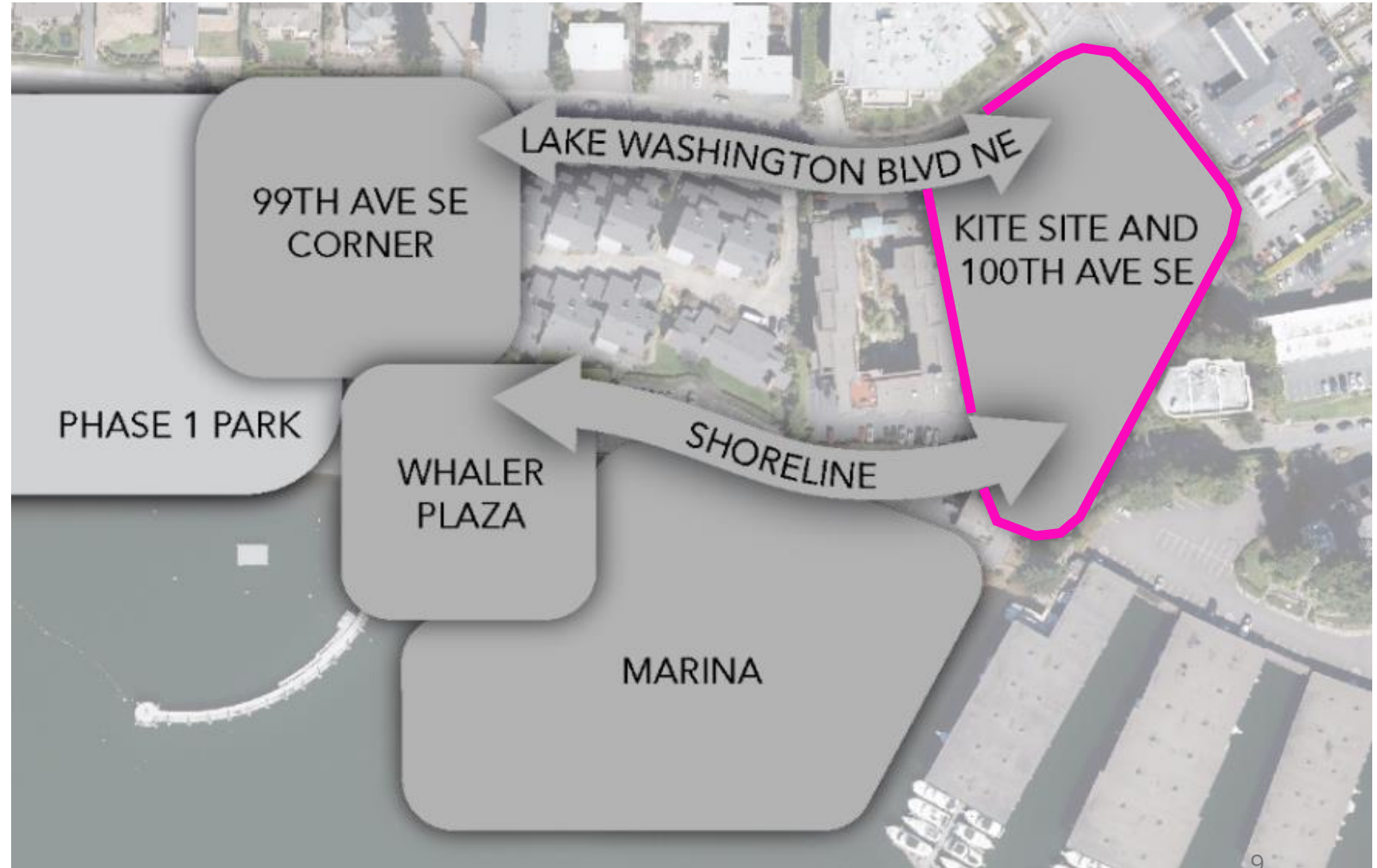
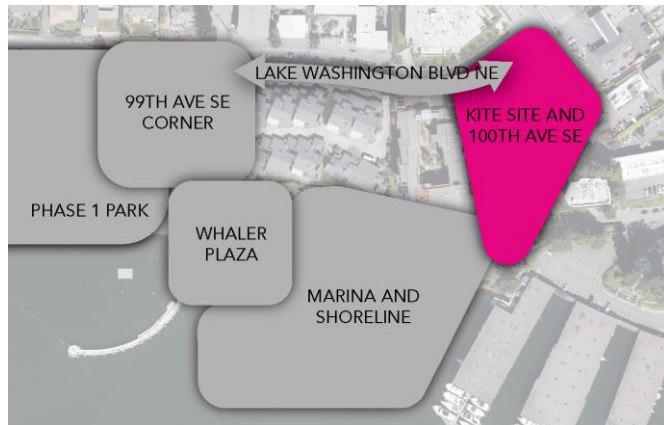




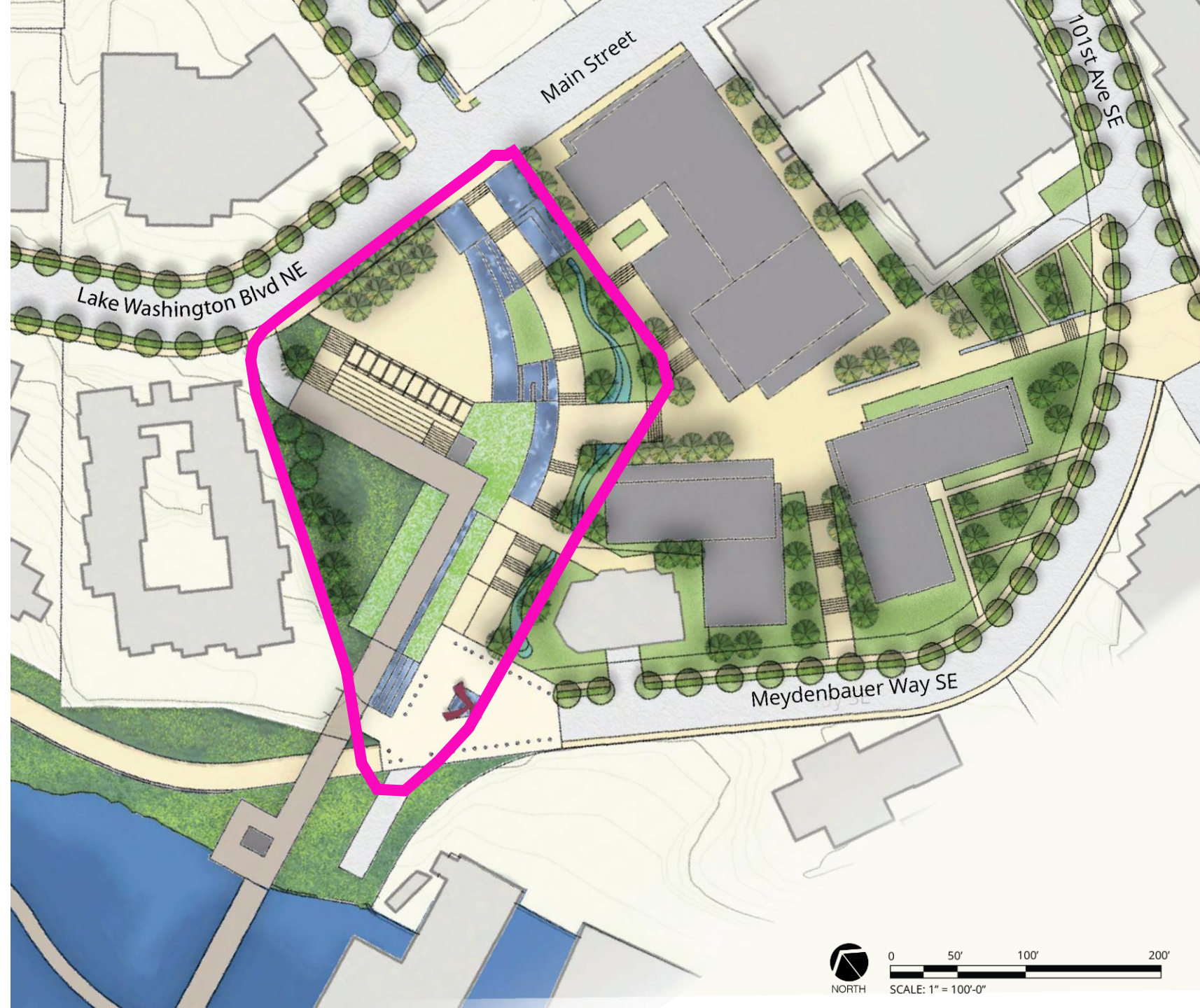
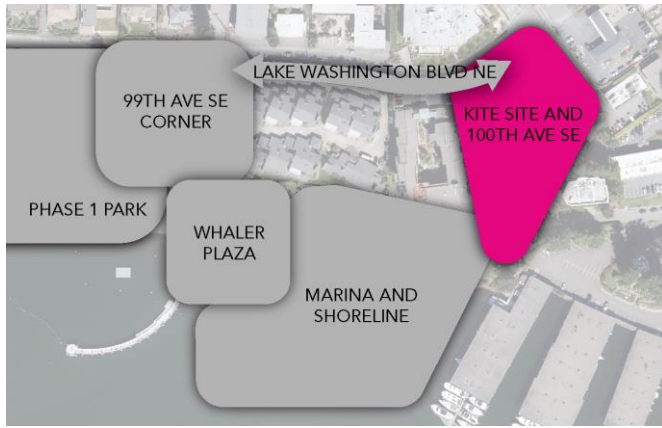
Community Engagement – June and July 2024

Meydenbauer Bay Park

Potential Next Phase Areas

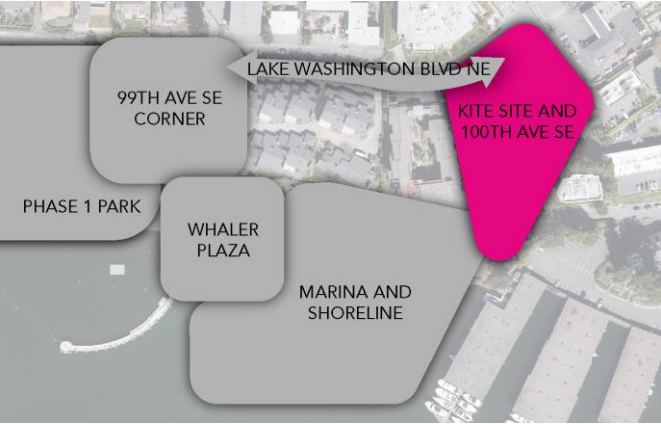


Kite Site: 2010 Master Plan

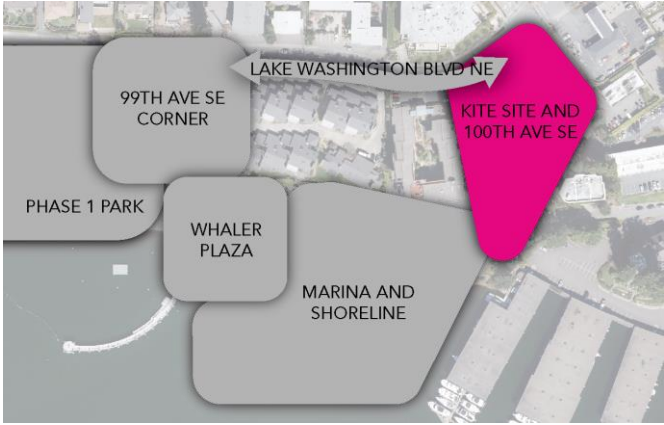
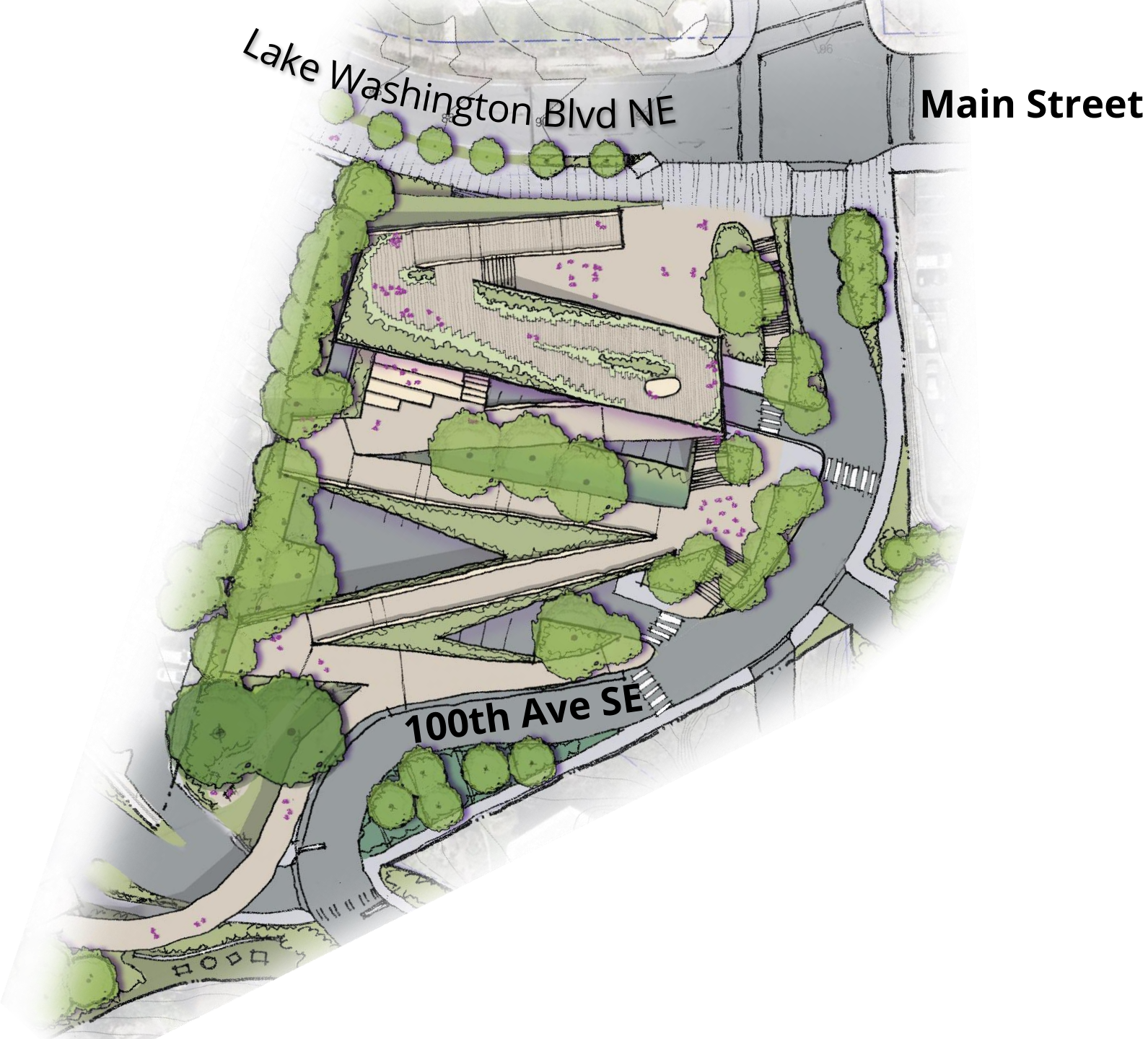


Kite Site:

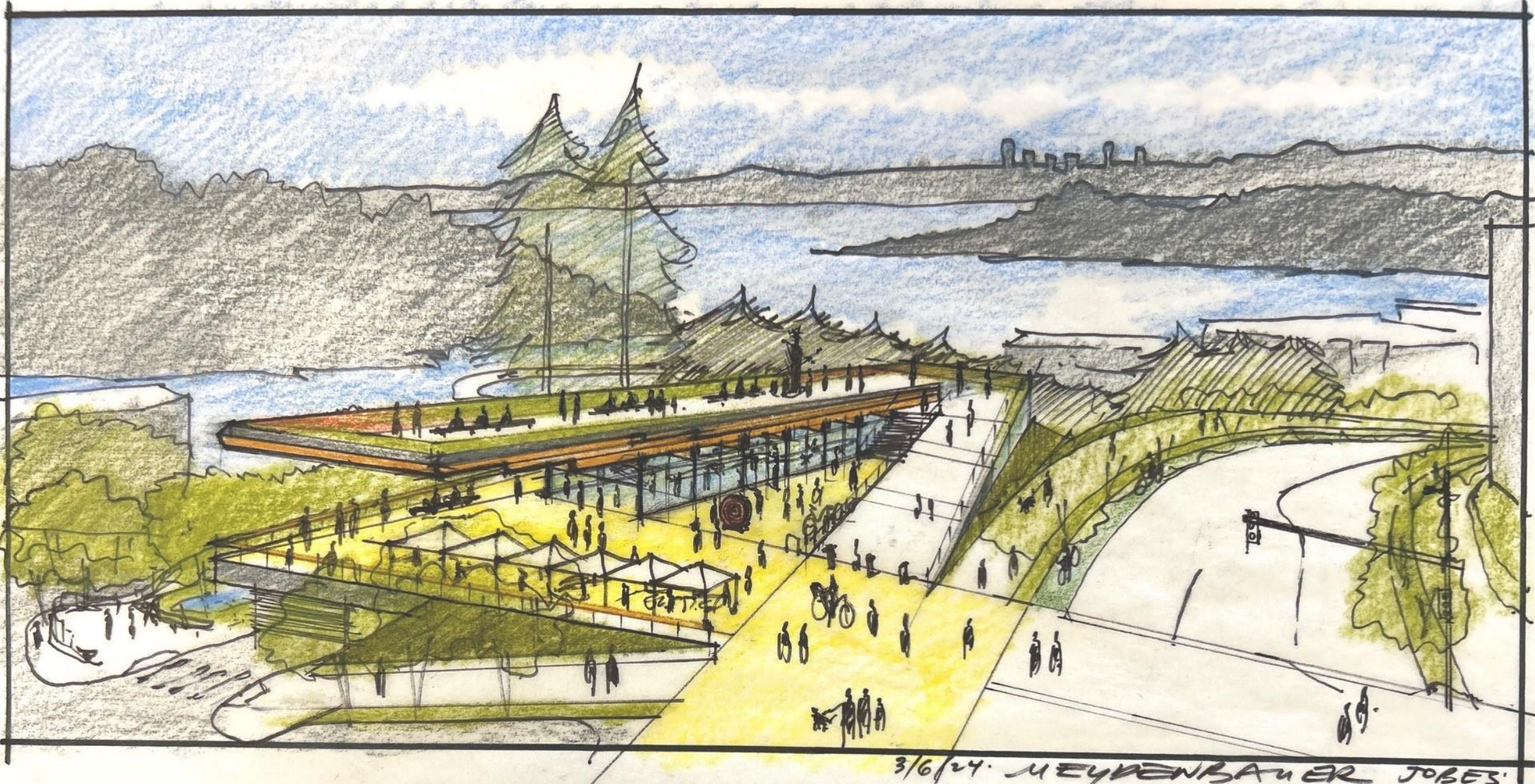
100th Ave SE, 2024 Realities



Kite Site: Plan View



Kite Site: Looking Southwest from Main St



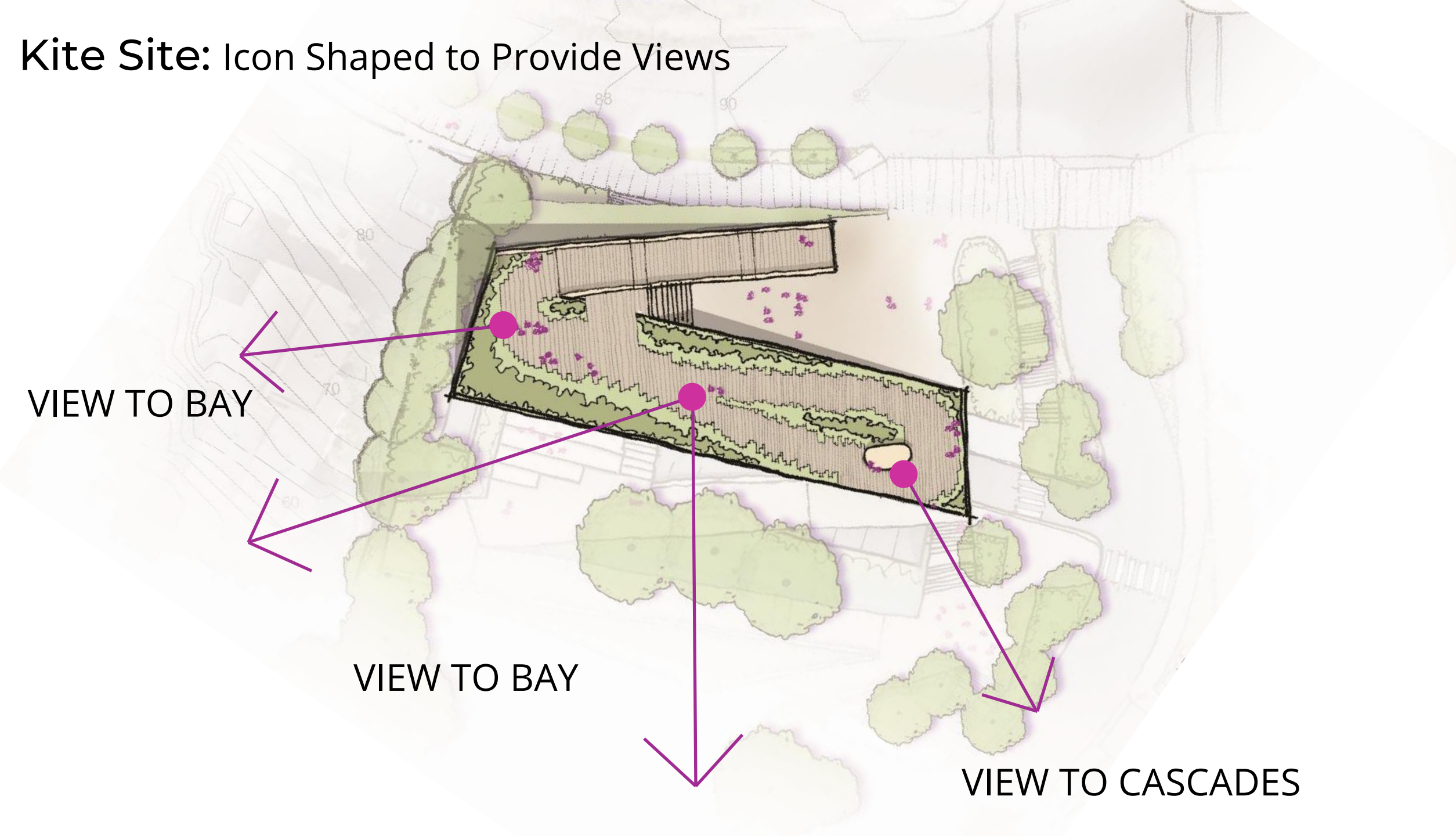
3/6/24. MEYDENBAUER JOBES

Kite Site: Icon Shaped to Provide Views

VIEW TO BAY

VIEW TO BAY

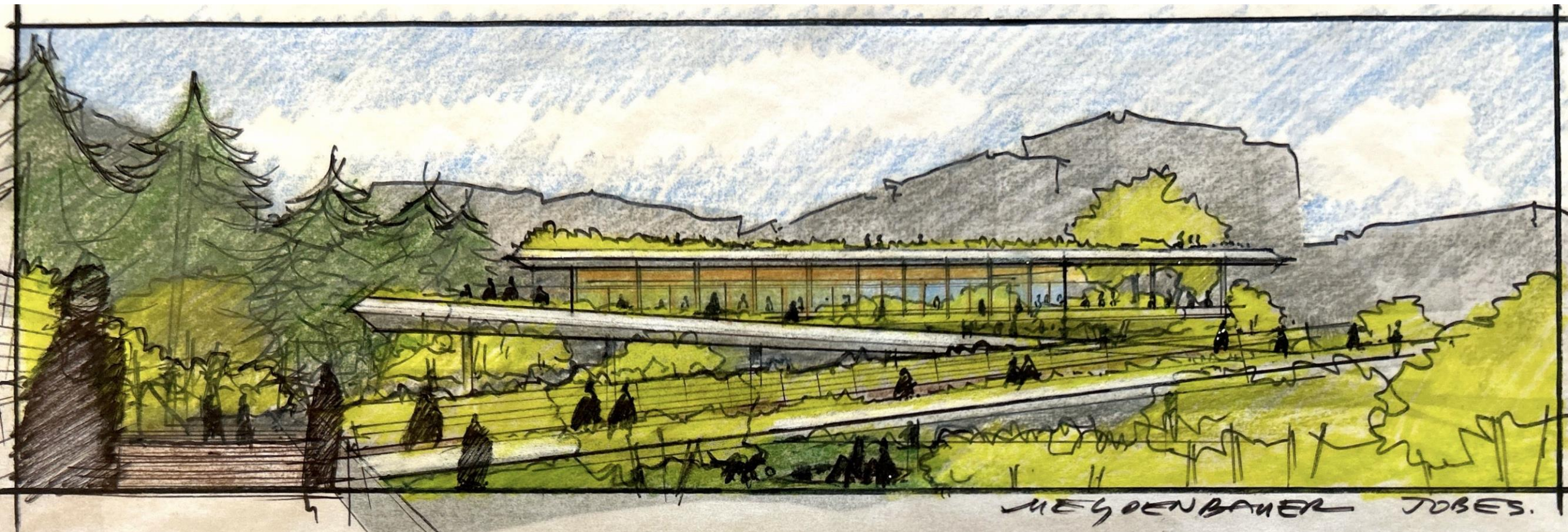
VIEW TO CASCADES



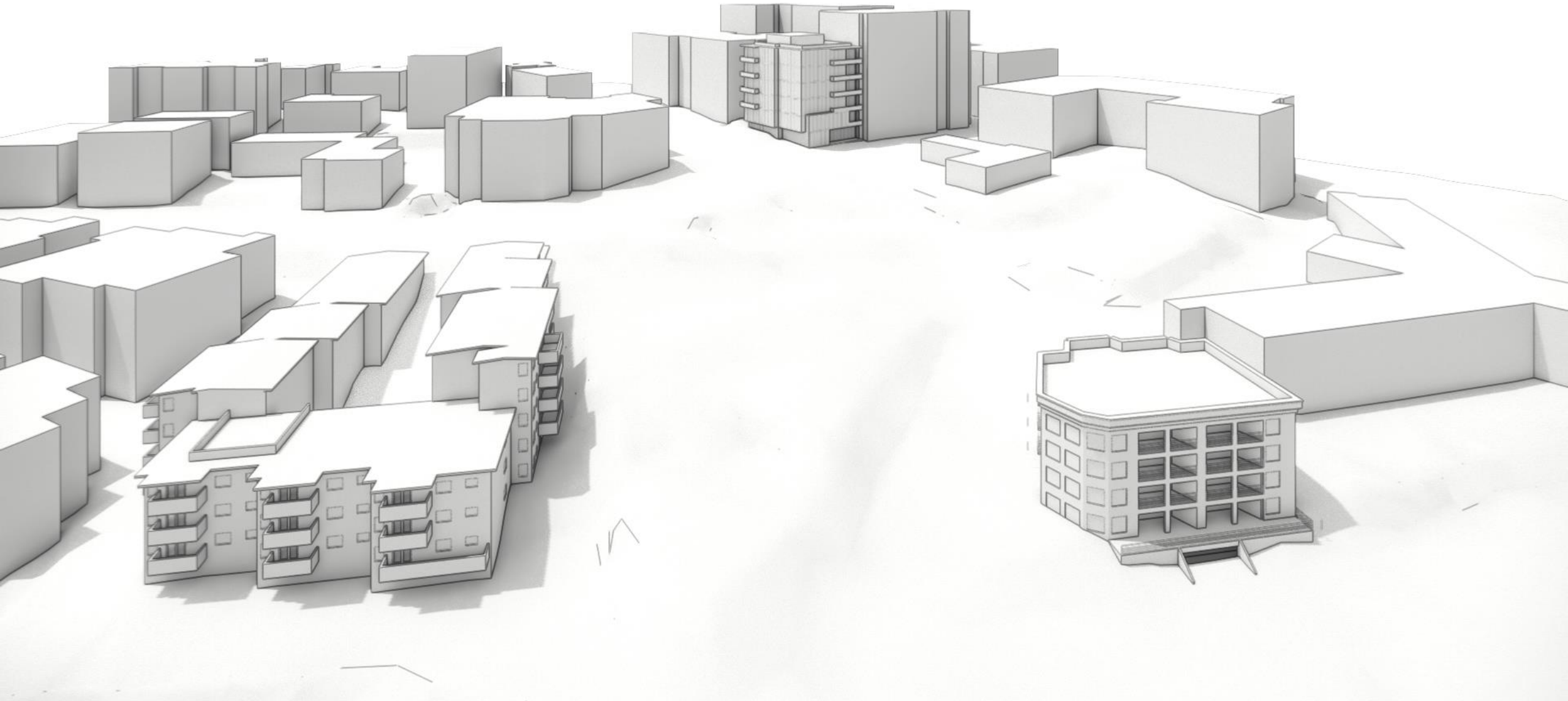
Kite Site: Plaza and Pavilion



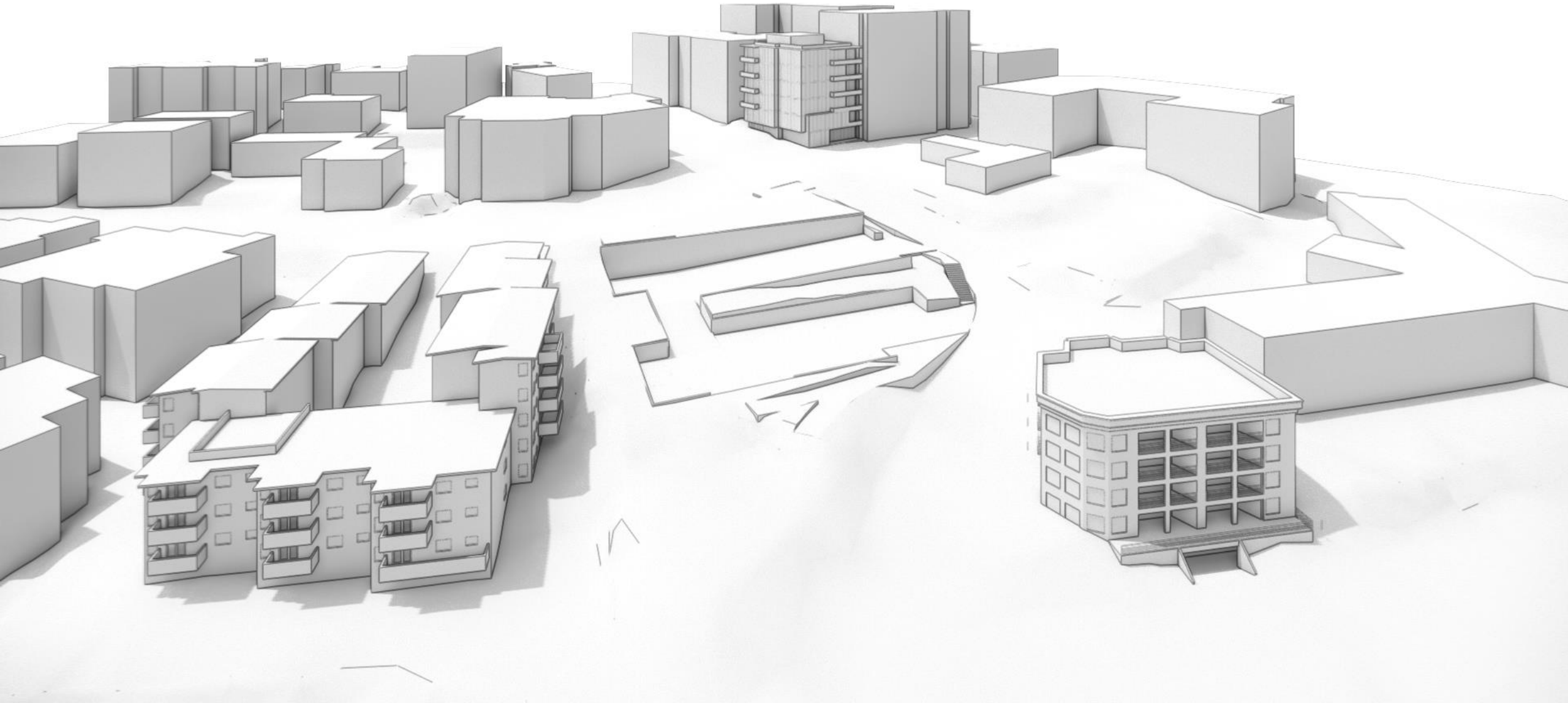
Kite Site: Looking Northeast with Lake to your back



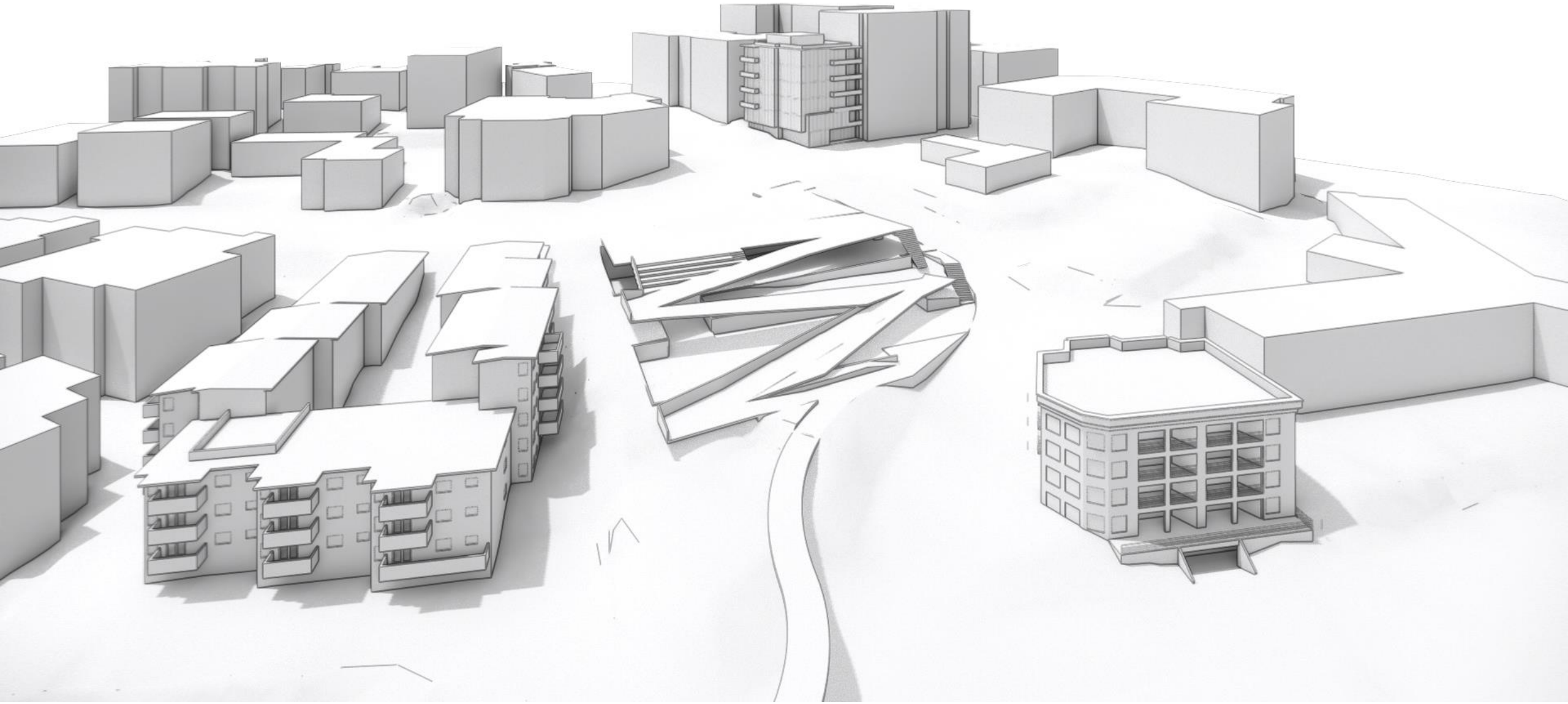
Kite Site



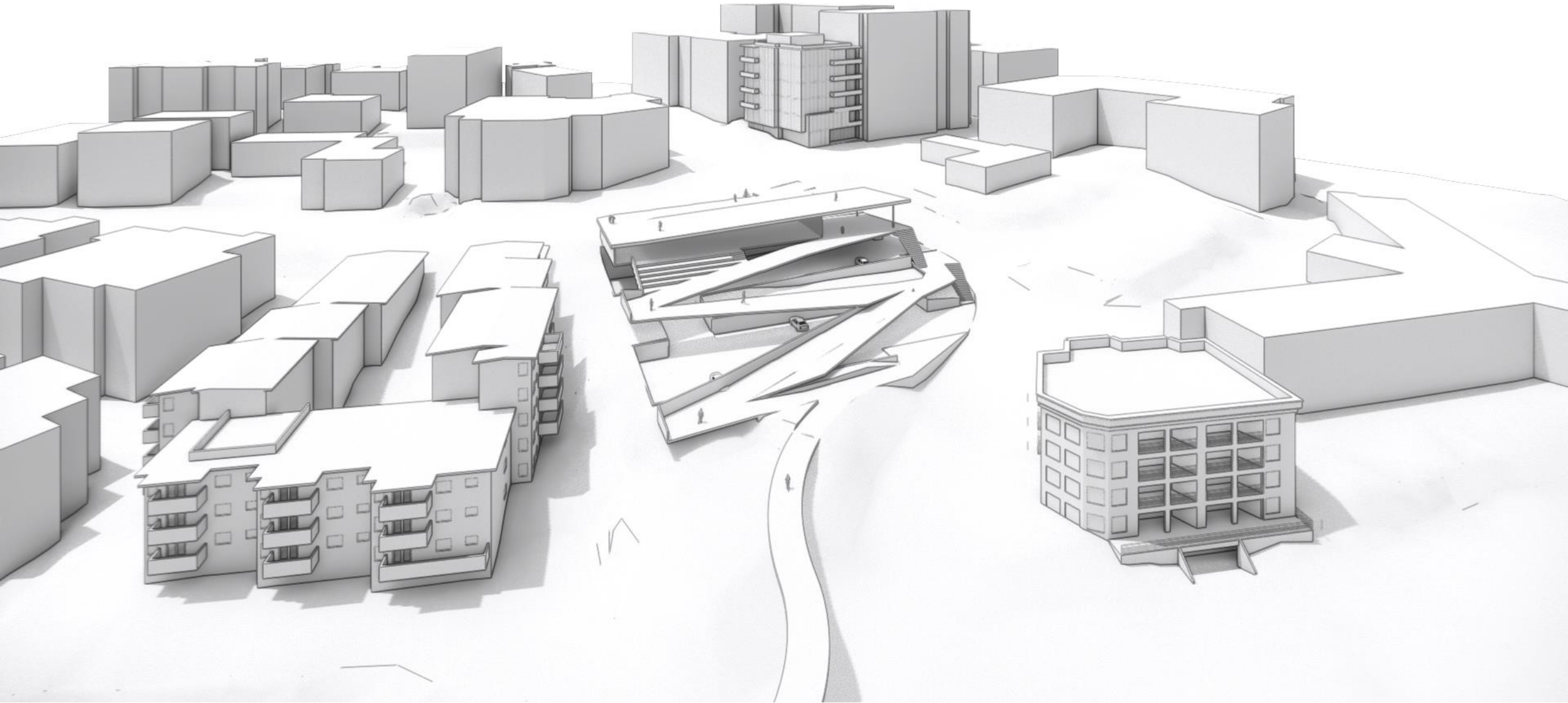
Kite Site



Kite Site

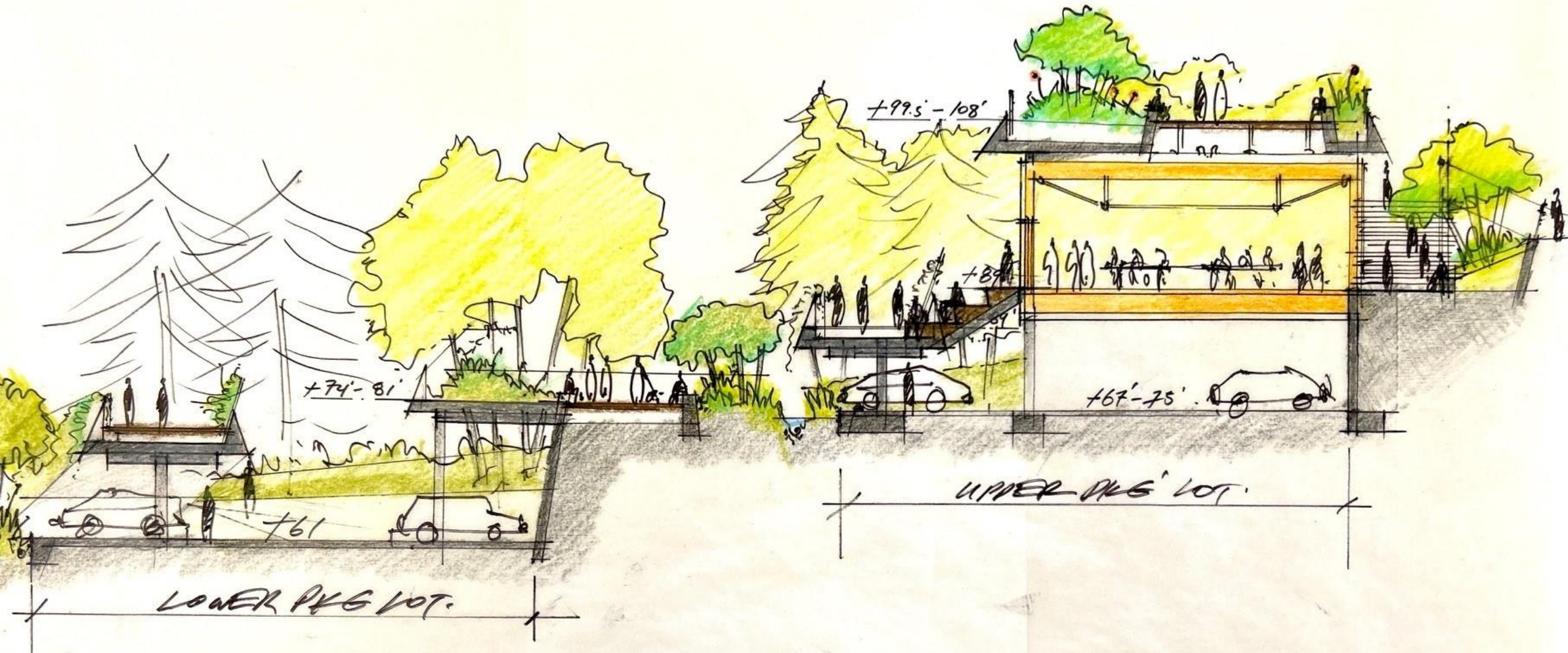


Kite Site



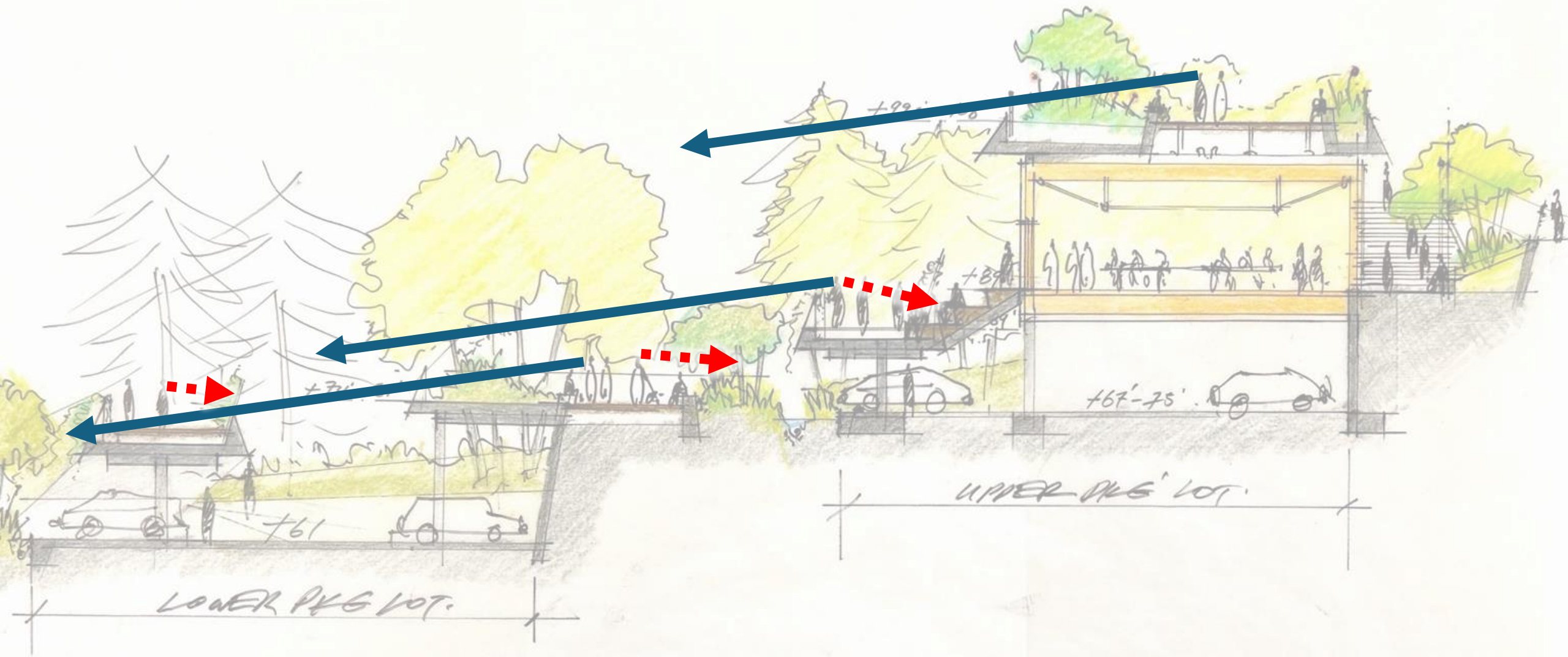
Kite Site

21



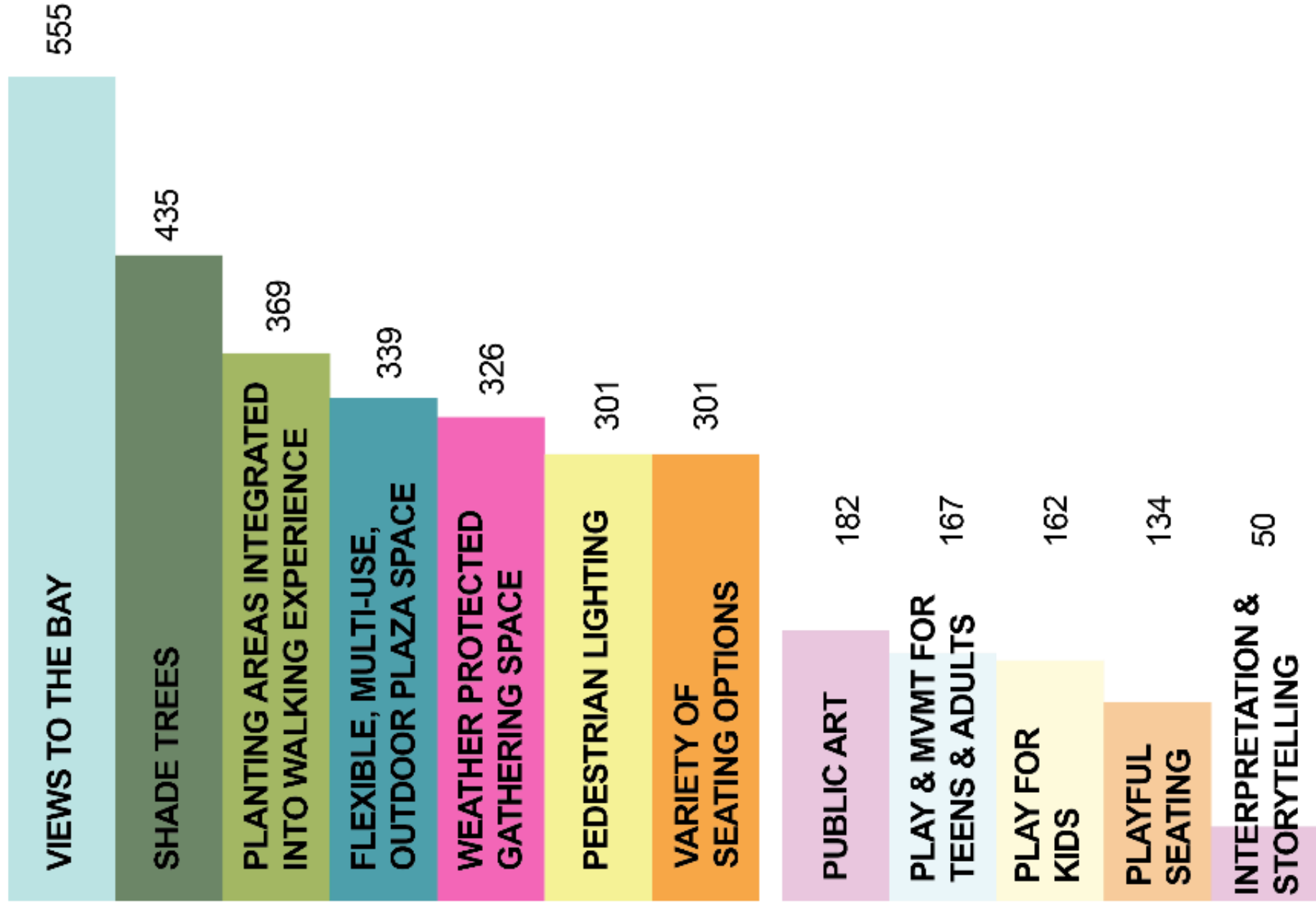
Kite Site

21

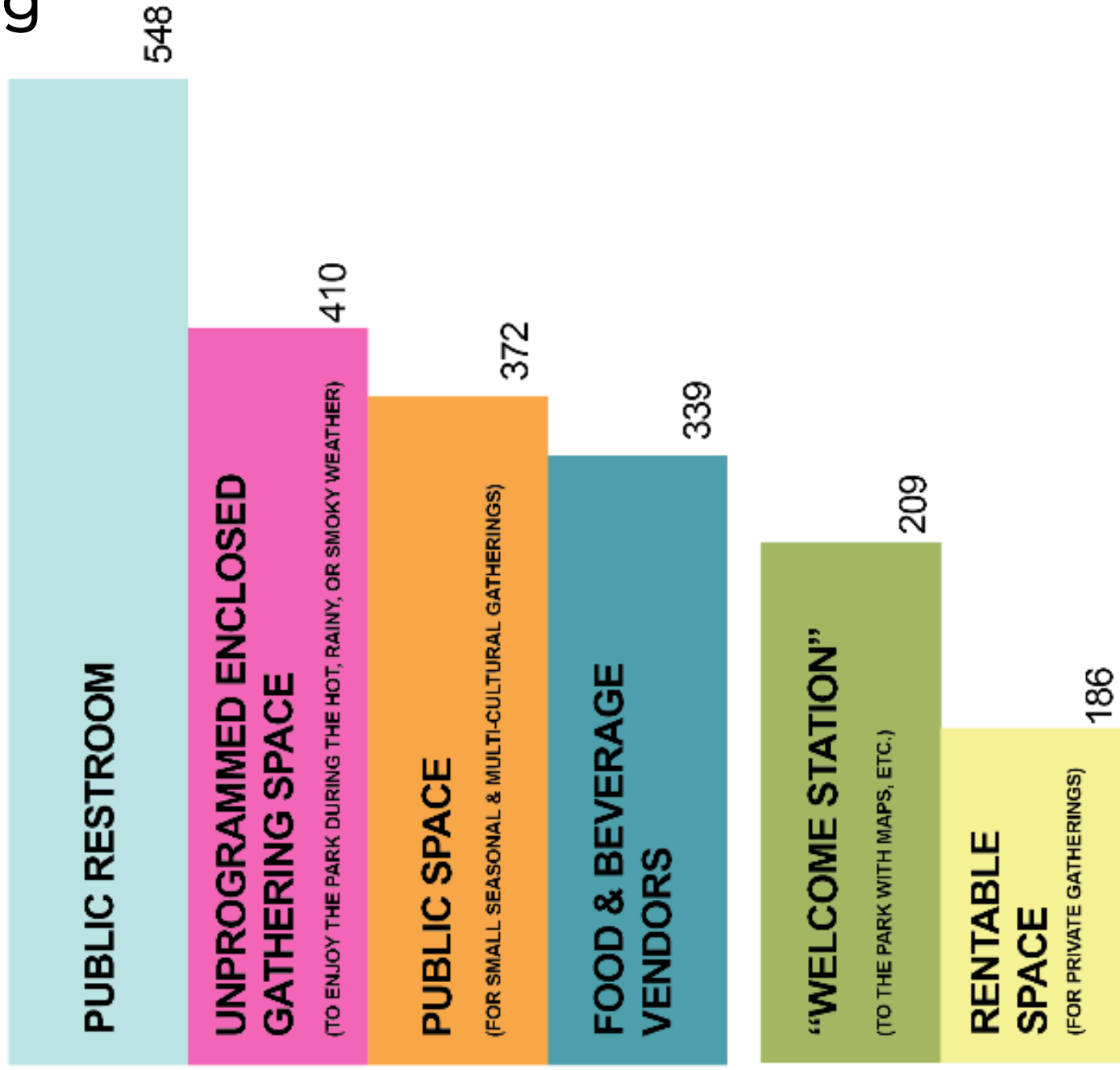


MEYDENBAUER BAY PARK
PHASE 2
June 10 2024 Community Meeting

Kite Site

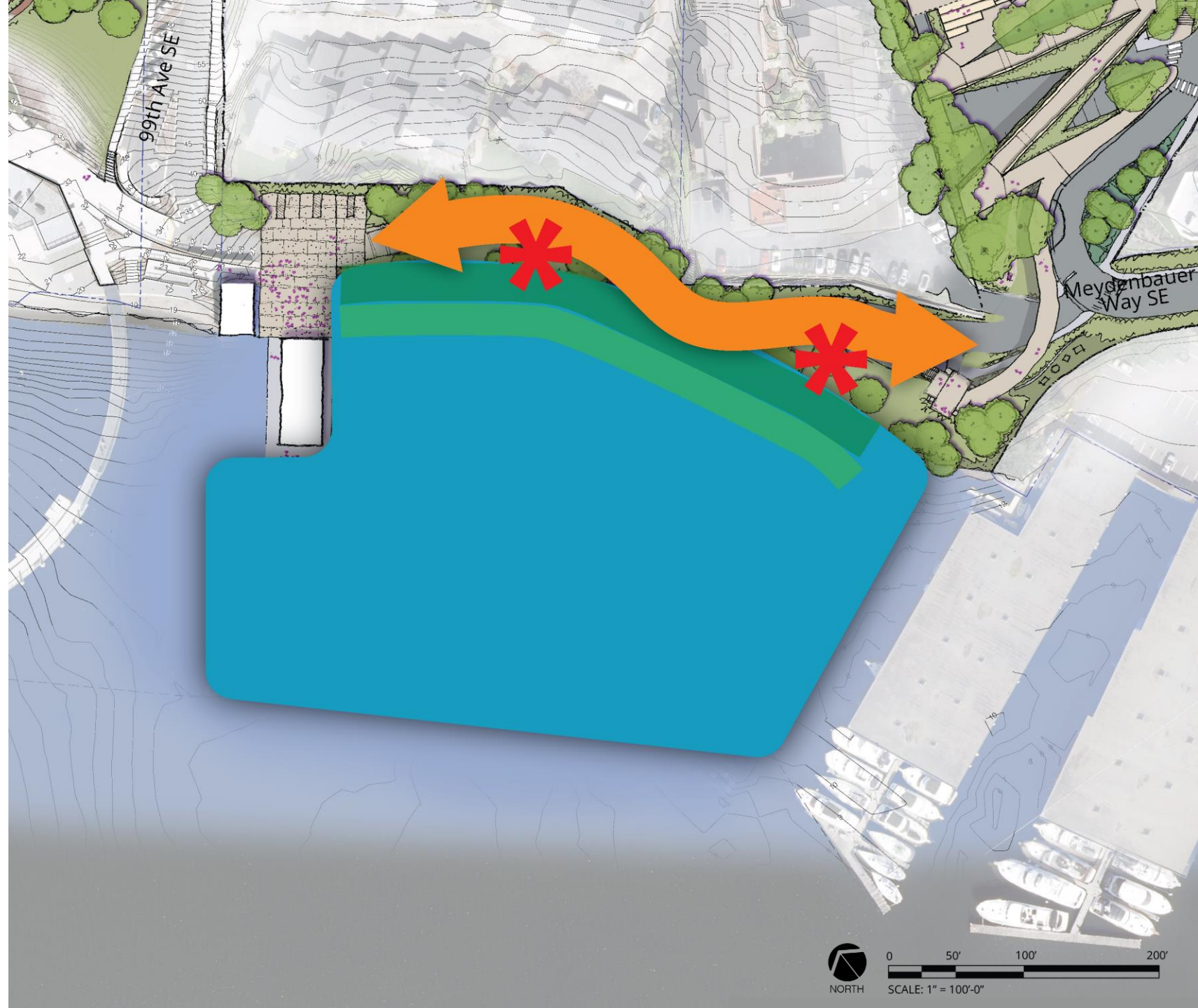
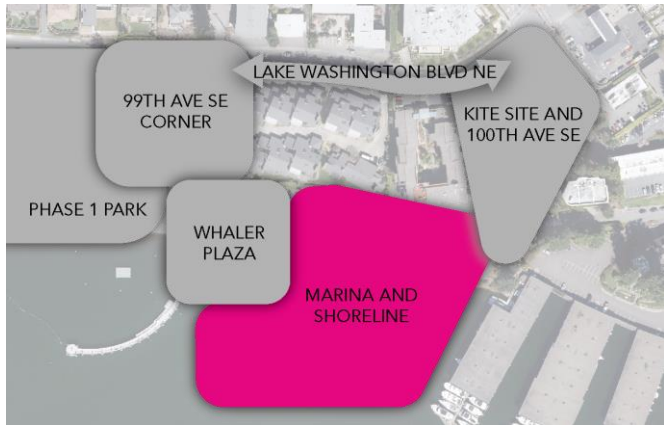


Kite Site Programing

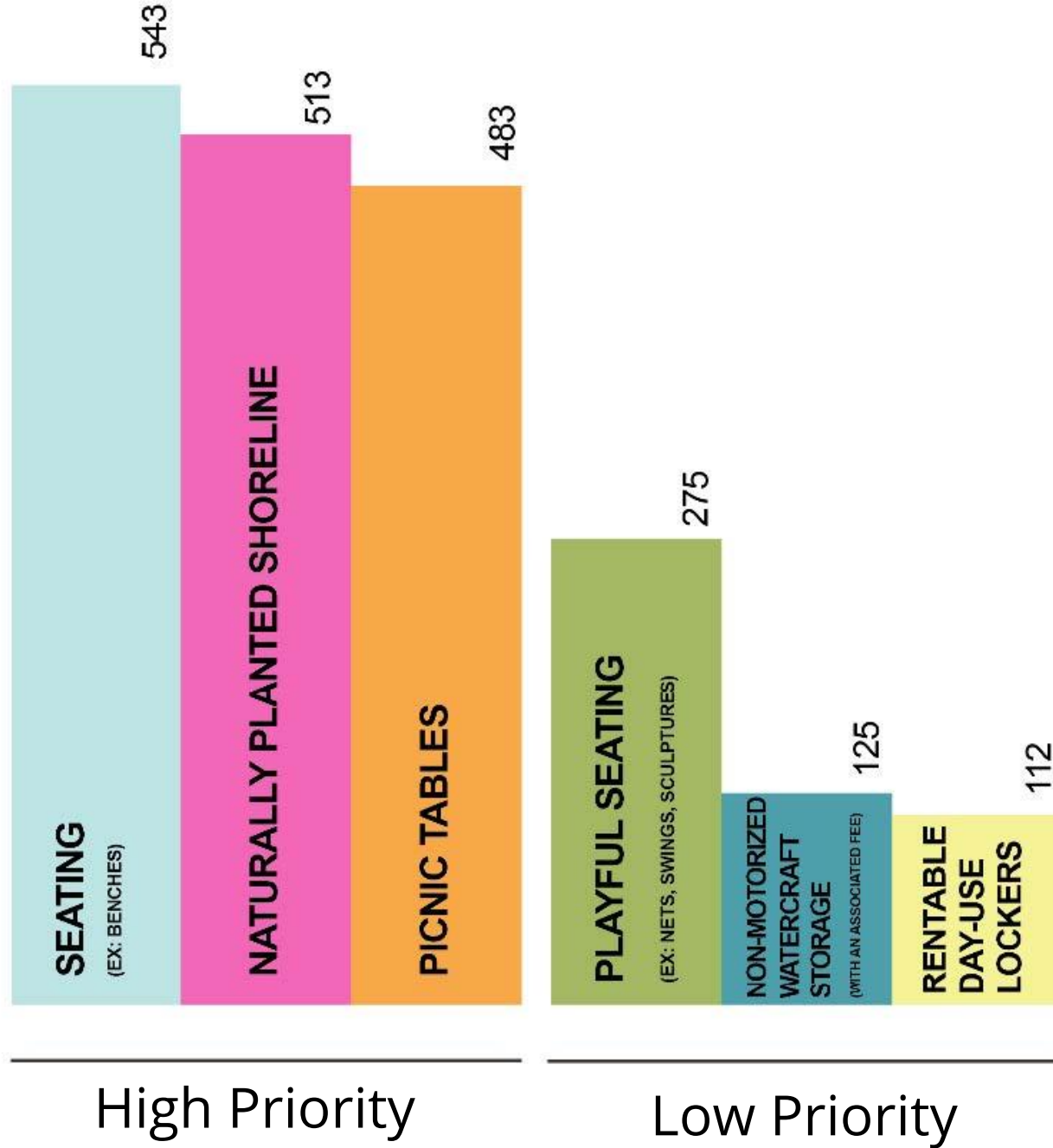


The Shoreline:

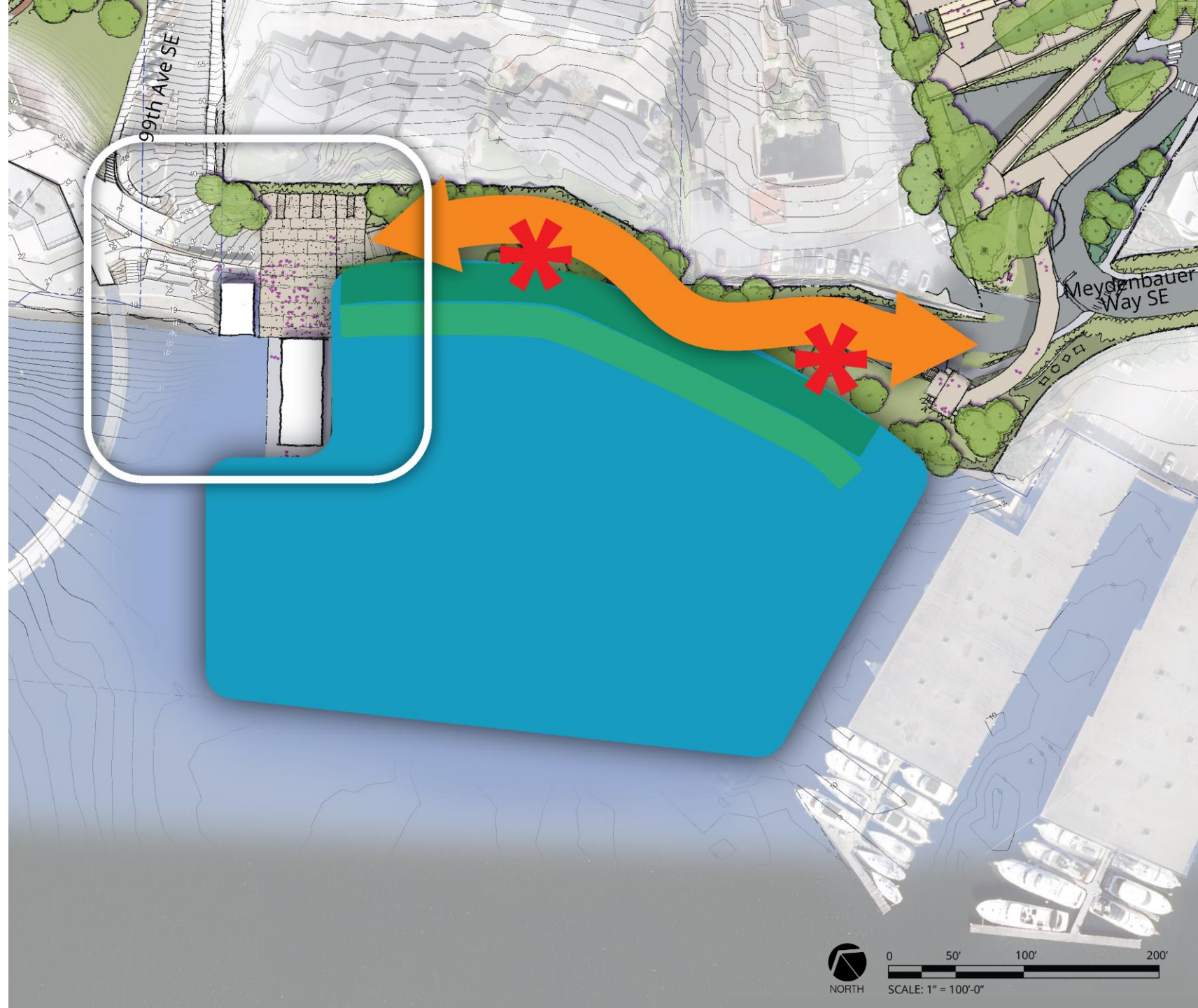
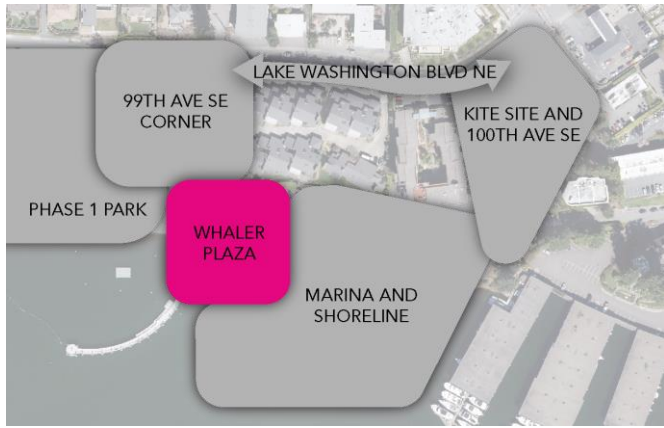
- Ecology Improved
- Pedestrian Promenade
- Emergency and Maintenance Access



Shoreline:

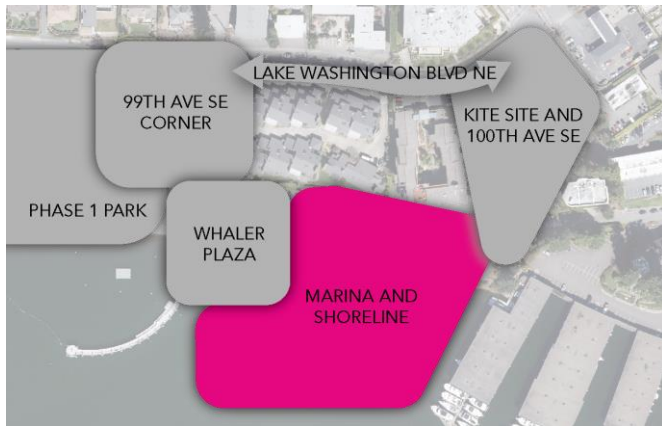


The Whaler Plaza



The Marina:

- Existing
- Eco-shore edge
- Marina Zone
- Department of Natural Resources Line of Navigability
- Nearshore Zone

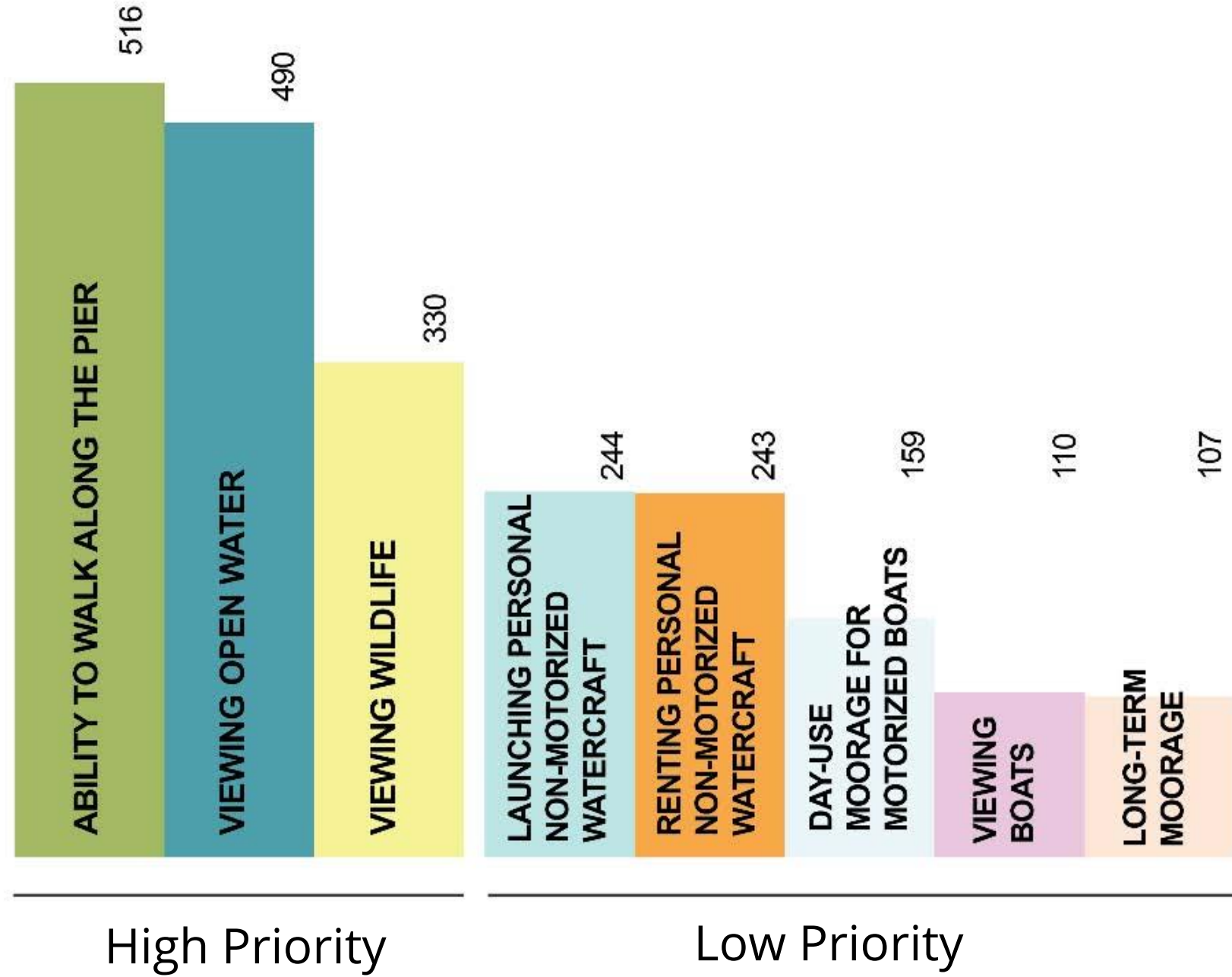


The Marina

Scenario	Visitor Slips	Monthly Slips
Existing Marina	14	79
2010 Plan	14+	38-48
Possible based on 2024 constraints	14+	31-48 possible

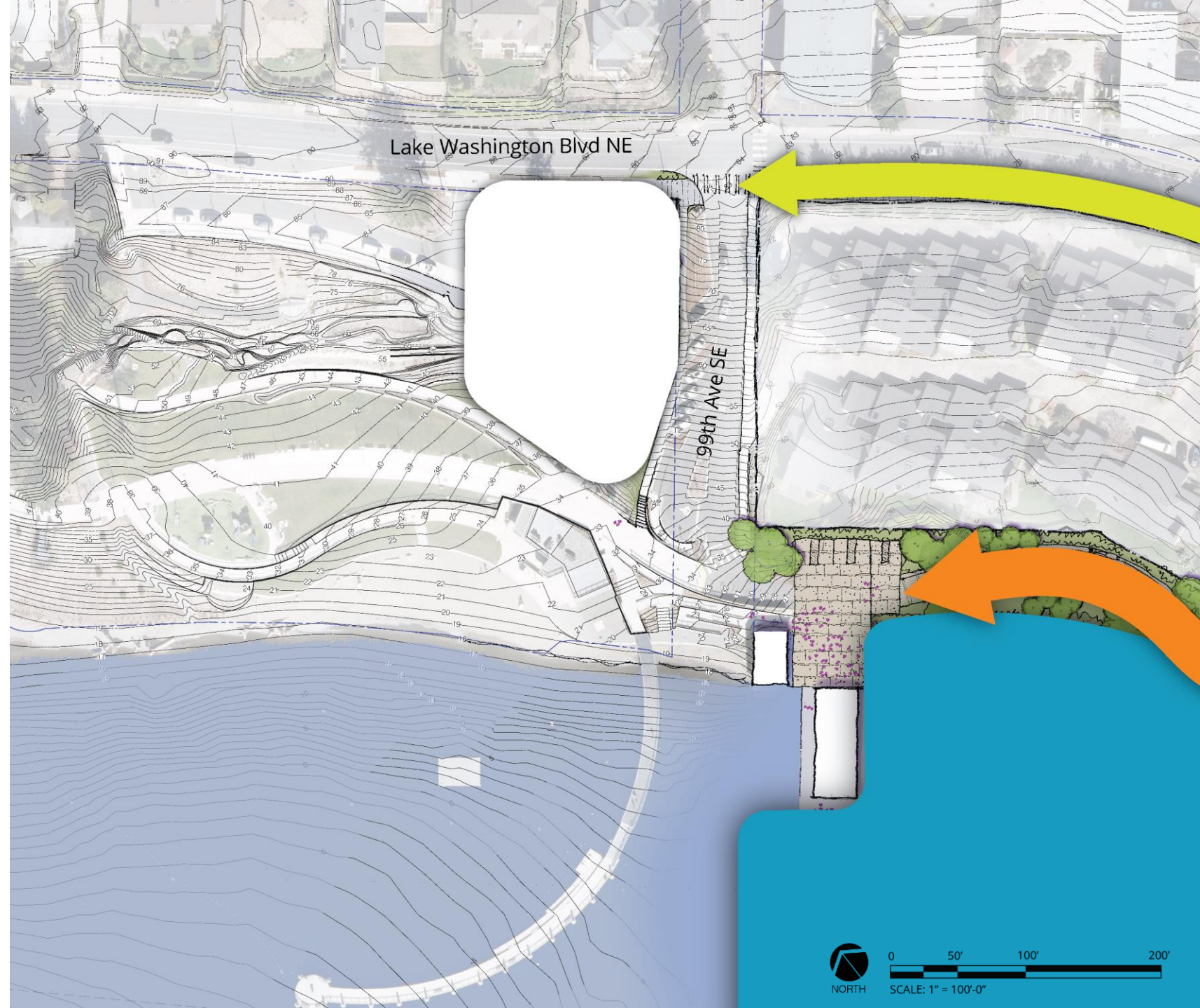
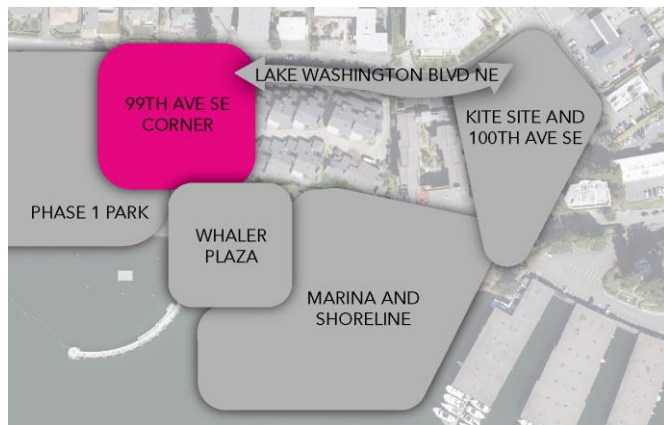


The Marina

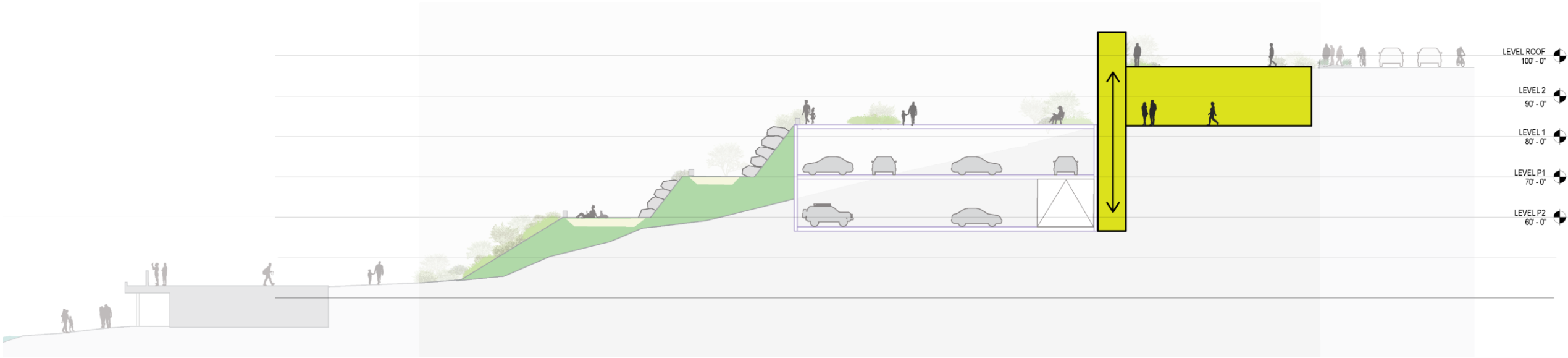


99th Ave SE

- Create more accessible and less steep routes
- Provide more parking, easier to find parking
- Provide varied amenity spaces



99th Ave SE: Activity Building



Existing park path
and beach building

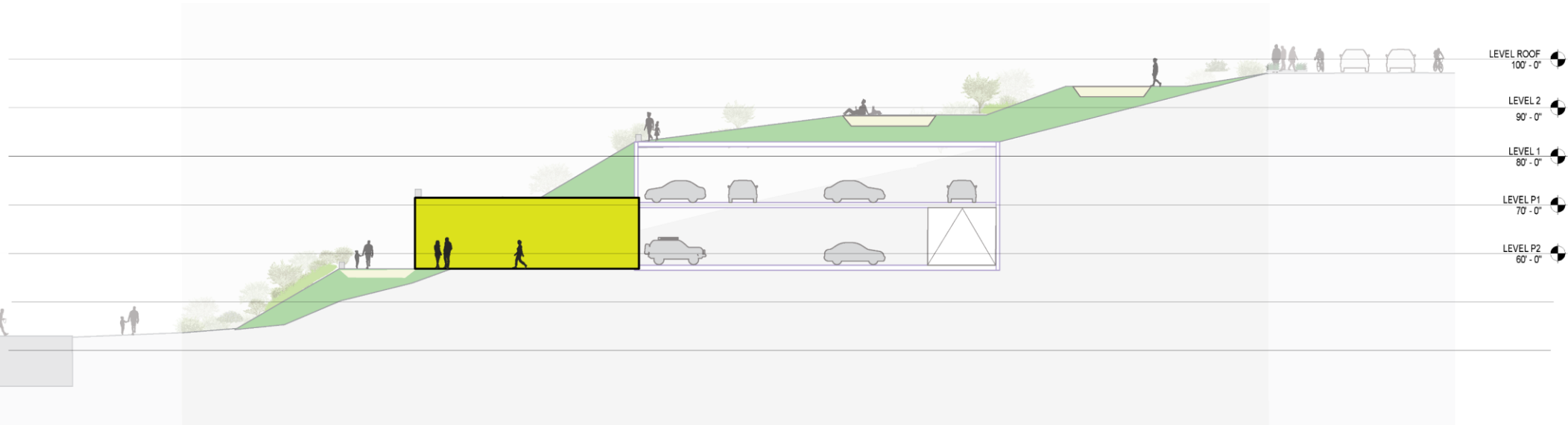
Paths, Seating, & Planting

Parking

Activity
Building

Lake
WA
Blvd
NE

99th Ave SE: Activity Building



Existing park path
and beach building

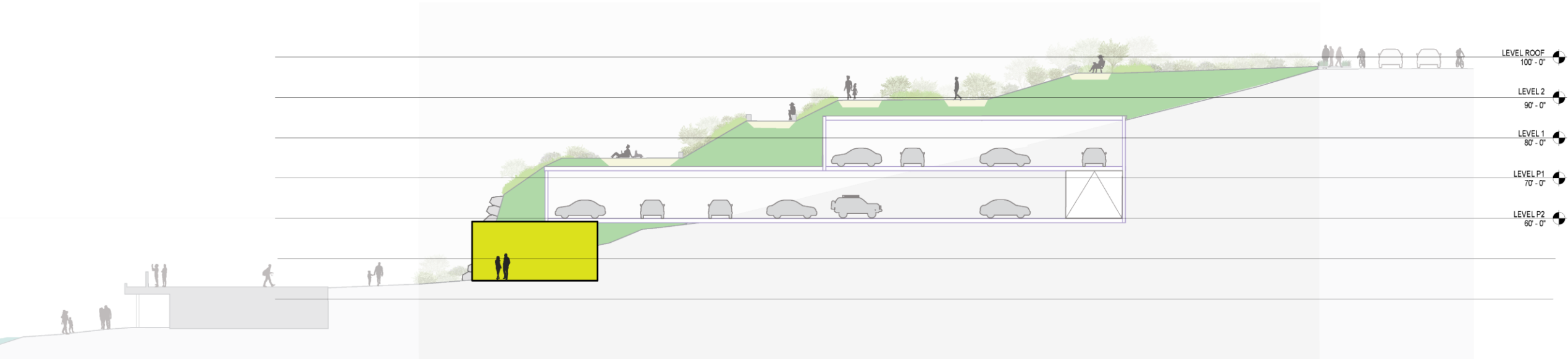
Paths, Seating, & Planting

Activity
Building

Parking

Lake
WA
Blvd
NE

99th Ave SE: Activity Building



Existing park path
and beach building

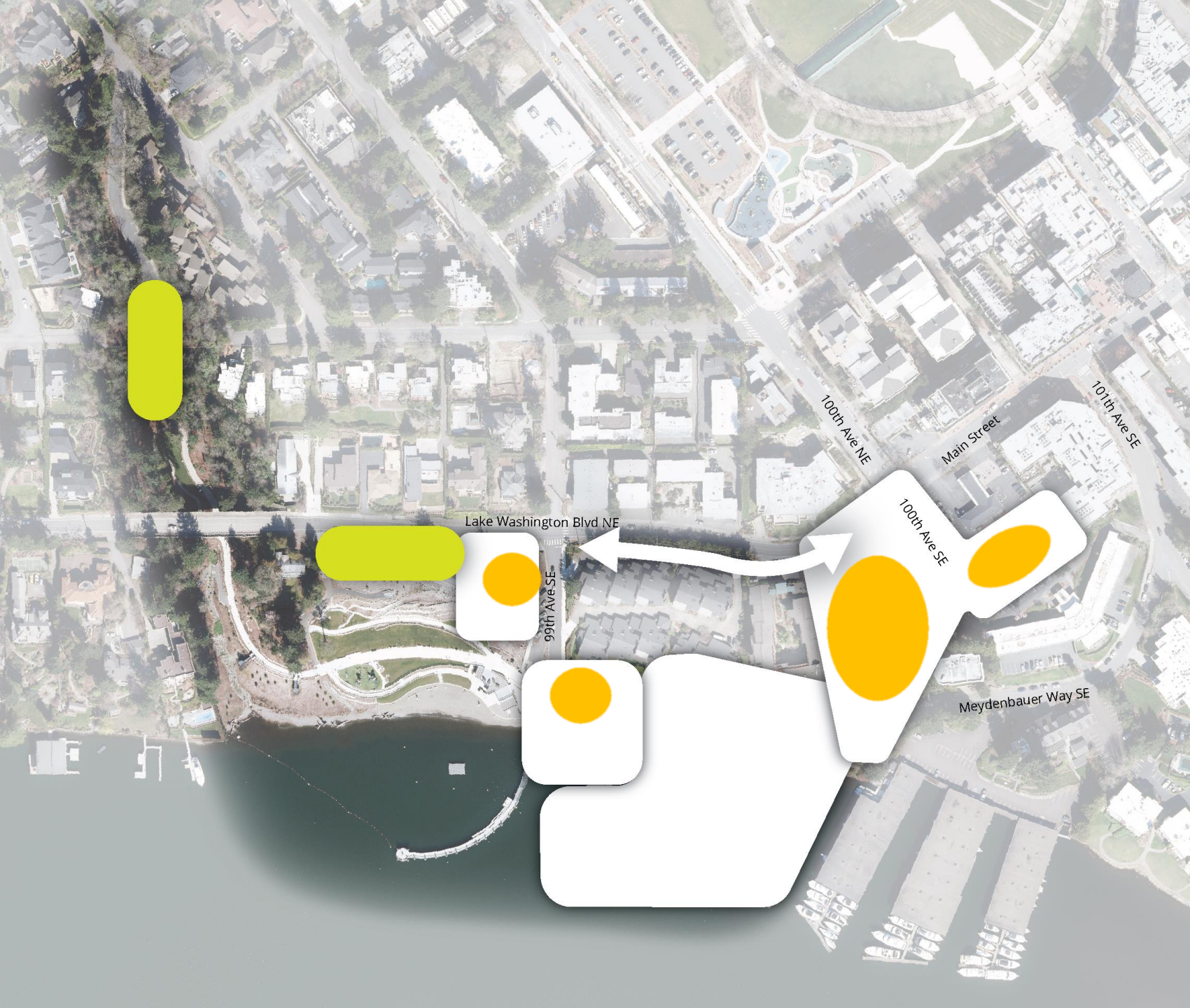
Activity
Building

Paths, Seating, & Planting

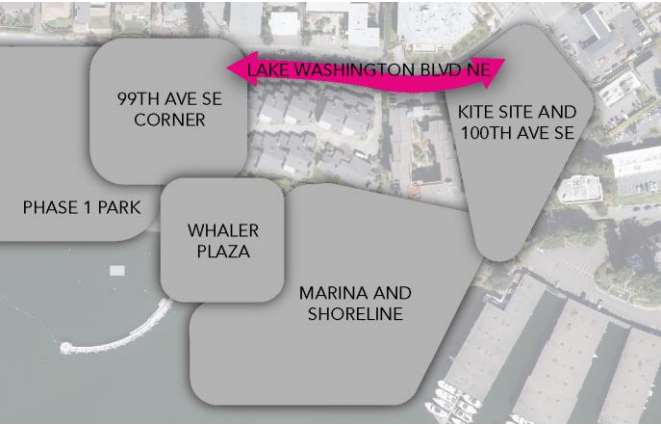
Parking

Lake
WA
Blvd
NE

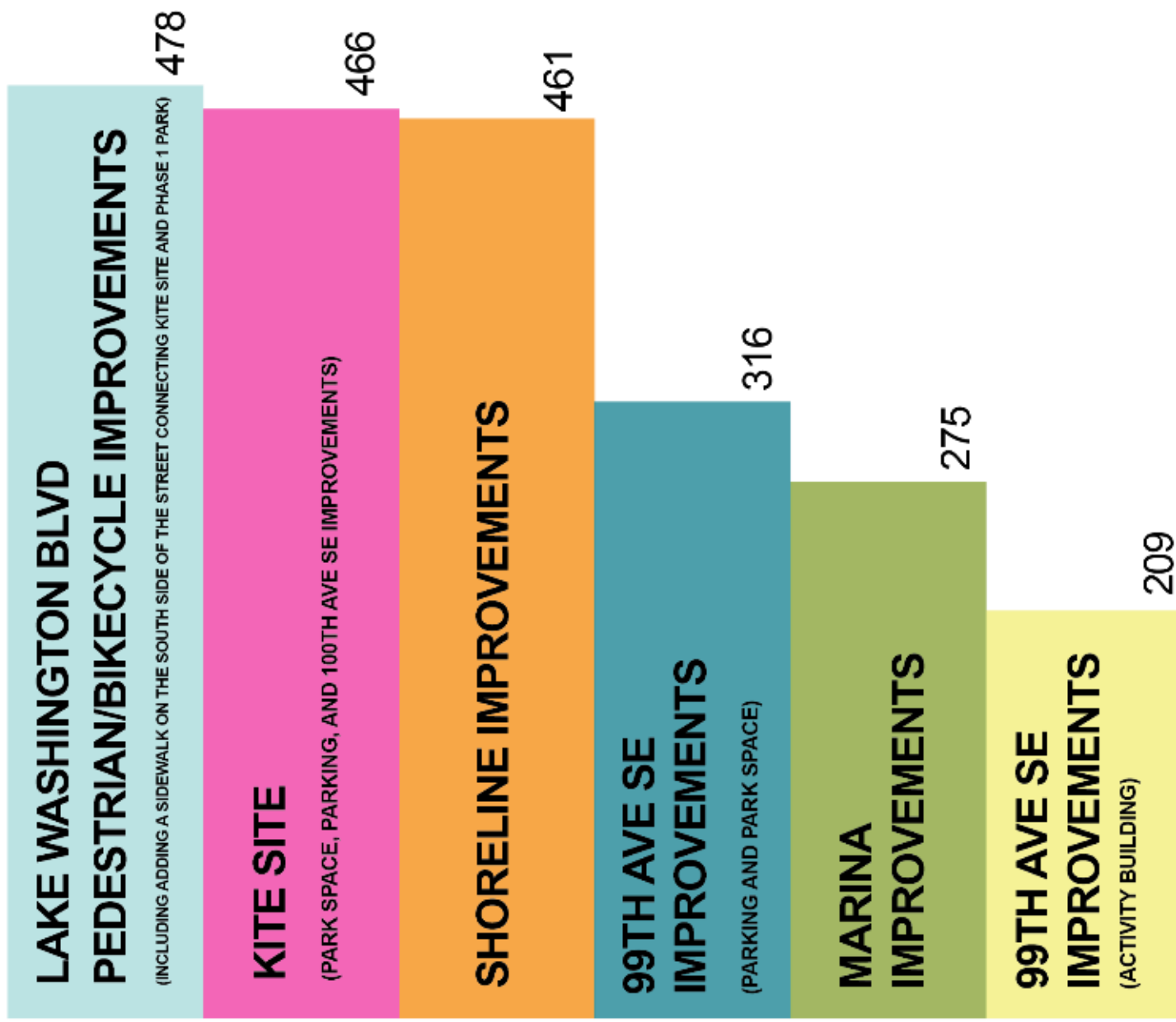
Parking



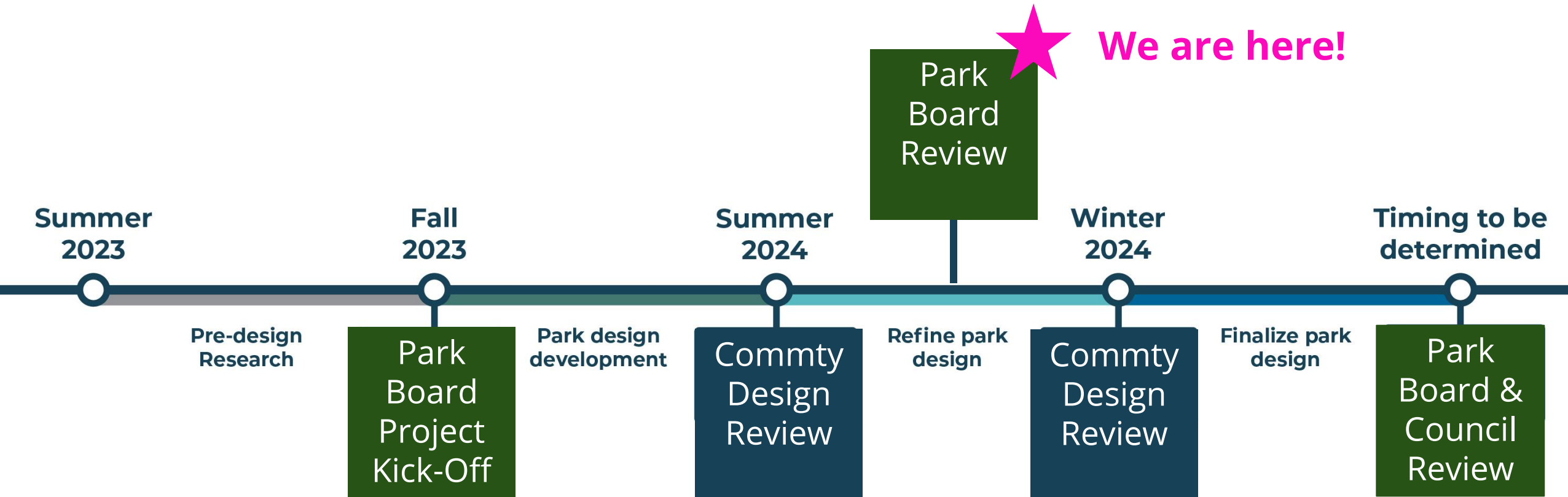
Lake Washington Blvd. NE



Overall Prioritization



Meydenbauer Bay Park Expansion Milestone Timeline



* Community and Stakeholder conversations held throughout the design process

Meydenbauer Bay Park

PHASE 2

COMMENTS OR QUESTIONS?

