



Great Neighborhoods Program: Eastgate and Factoria

Project Update

Justin Panganiban, AICP, Senior Planner/Urban Designer
Community Development Department

May 20, 2026



City of Bellevue



Information Only

Staff request that the Board review draft policies for Eastgate and Factoria that relate to parks, recreation and open space elements.



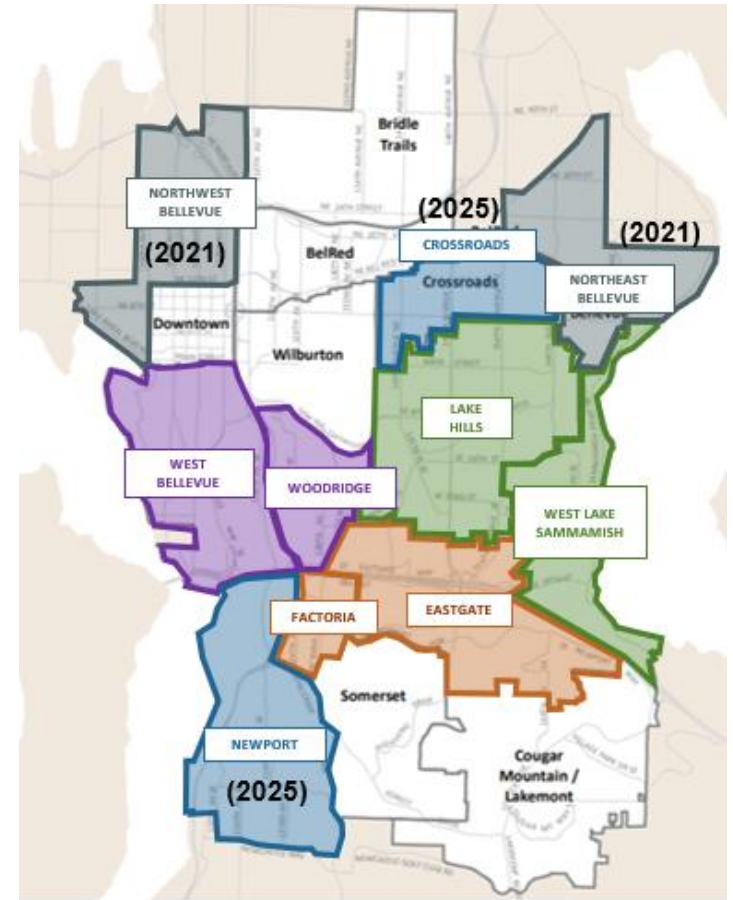
Agenda

1. Neighborhood Planning Process
2. Scope Elements
3. Community Engagement
4. Draft Eastgate Policies
5. Draft Factoria Policies

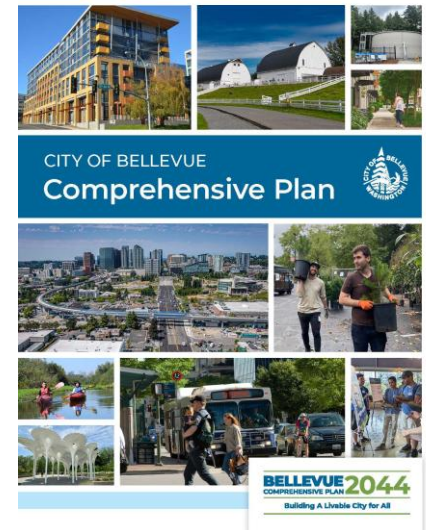
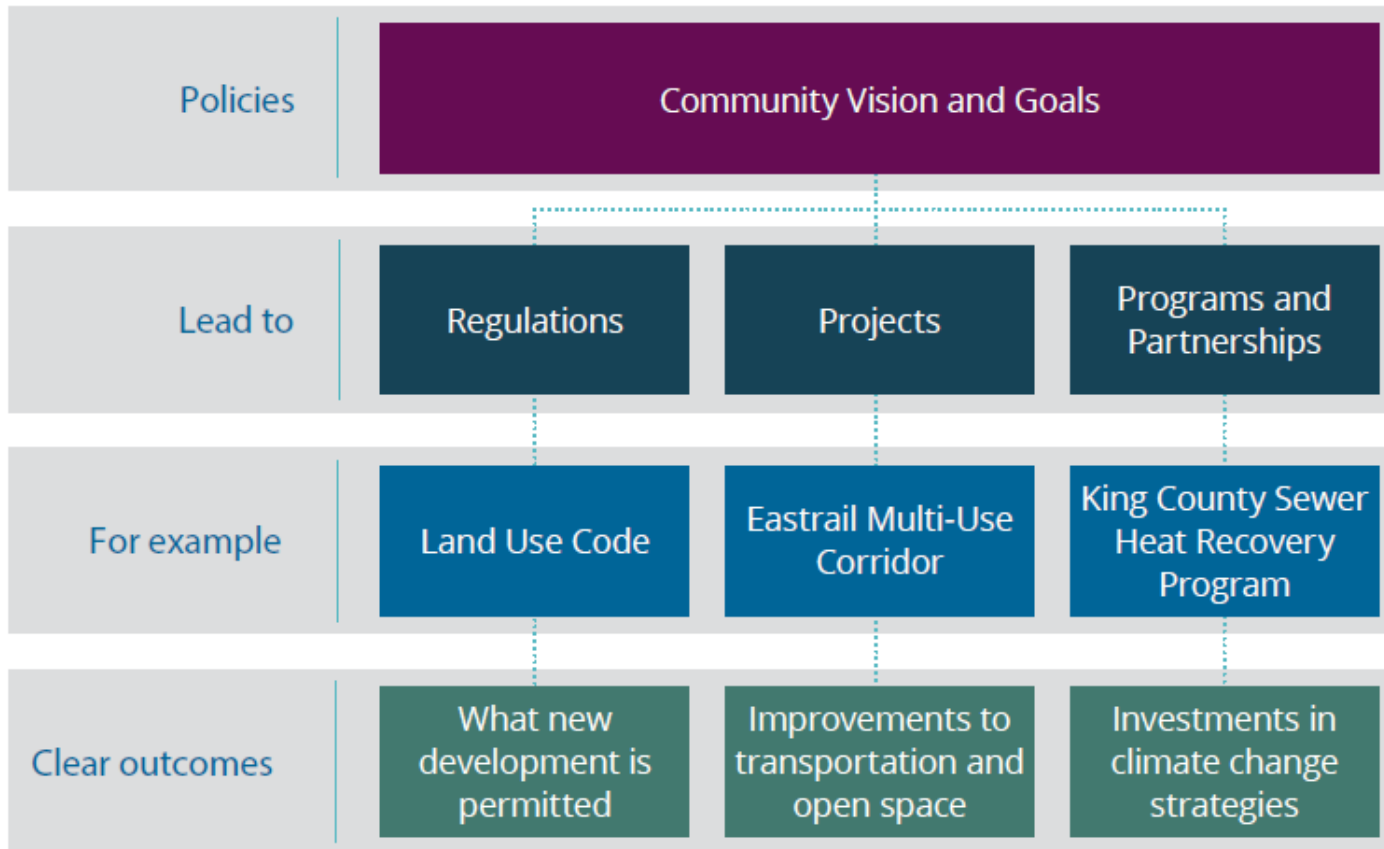


Background

- 16 neighborhood areas
- Neighborhood area plans localize **citywide policies** to reflect **priorities** and enhance **unique identity** through extensive **community engagement**
- **Completed Plans:**
 - Northeast and Northwest Bellevue adopted in 2021
 - Crossroads and Newport adopted in 2025

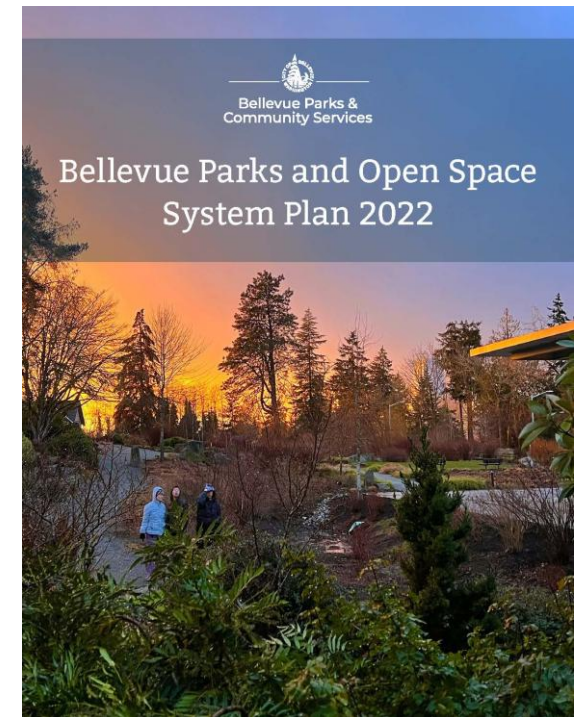


Comprehensive Plan



Parks and Open Space System Plan

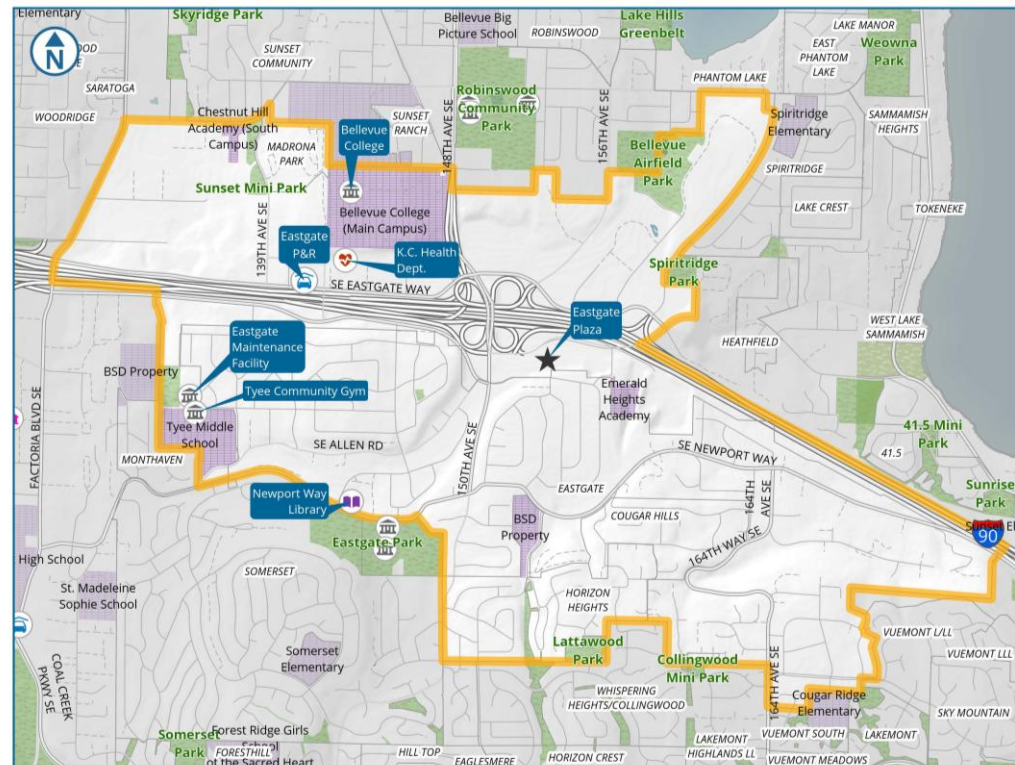
- Add neighborhood scale parks
- Connectivity to regional trails and parks
 - Mountains to Sound Greenway



Neighborhood Area Boundaries



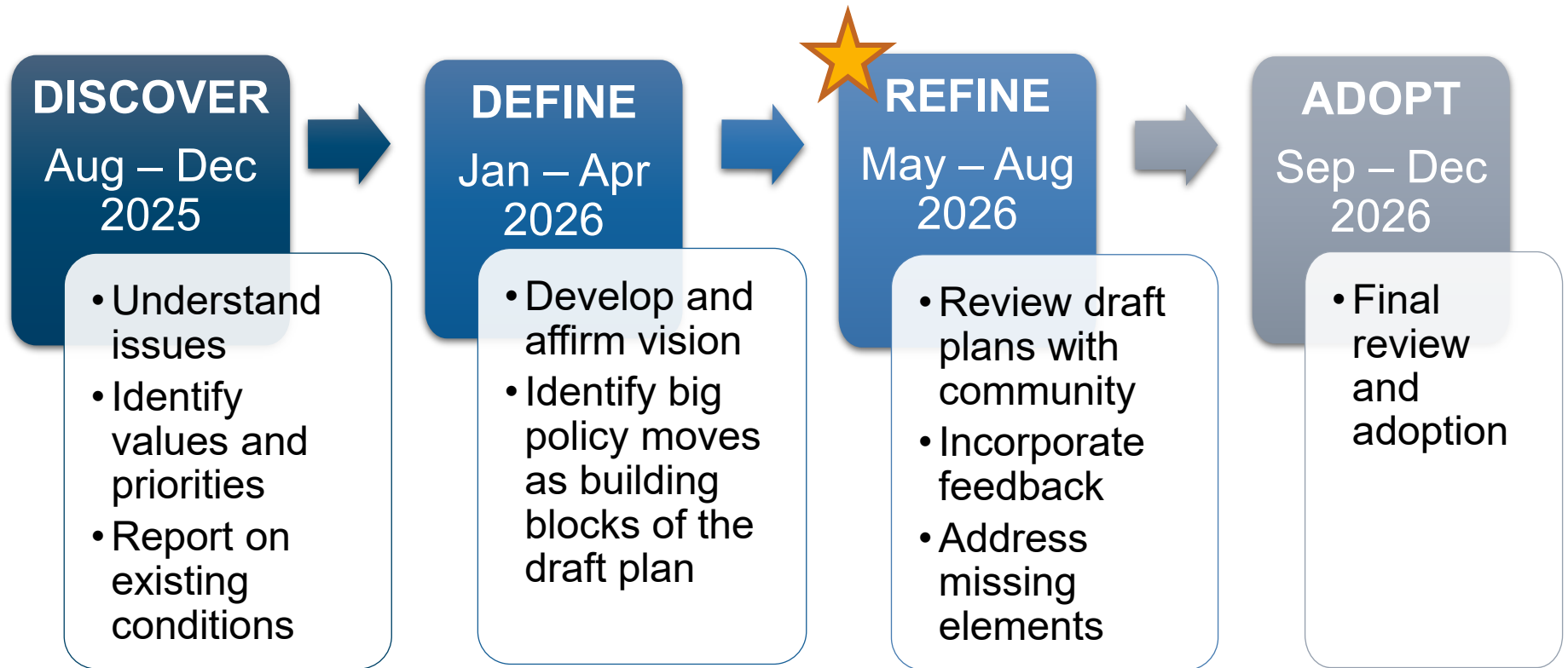
Factoria



Eastgate



Neighborhood Planning Process



Plan Subsections



Neighborhood Identity

Identify and strengthen a neighborhood's unique elements



Mixed Use Centers & Neighborhood Centers

Strengthen centers that provide for amenities, services, housing



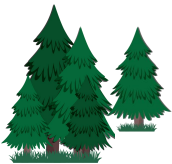
Community Gathering Spaces

Strengthen spaces for community events and gathering



Mobility and Access

Improve access to mobility options and local connections



Environment

Improve qualities of natural features



Discover Phase Engagement

- In-person kickoff at South Bellevue Community Center
- Questionnaire sent to every household in the neighborhood areas
- Online engagement using Engaging Bellevue
- Tabling at community events
- Student workshop at Newport High School
- Met with business owners through door-to-door visits and listening session
- Two “neighborhood scans”

Engagement Reports provide a full summary and are included in the meeting packet.



Define Phase Engagement: Urban Design

- Workshops and tabling to receive feedback on draft vision statement and policy moves
- Identifying locations of desired connectivity and neighborhood experience improvements
- Drawing and collaging ideal public space, streetscape, and/or neighborhood



A Plan Shaped by Community



Eastgate Values and Assets

Key Values

- Safety
- Natural beauty
- Diversity
- Economic opportunity

Neighborhood Assets

- Mature trees
- Nearby parks
- Proximity to both city amenities and wilderness
- Friendly neighbors



Submitted by participants through Engaging Bellevue



Eastgate Vision Statement

Eastgate is a **convenient, safe, and welcoming** neighborhood where its diverse residents, businesses, and student population can thrive and build connections with one another.

Its tree-lined and well-maintained residential areas are the heart of the neighborhood, and people from all stages of life are seen **walking, biking, and taking transit to experience the area's natural beauty, outdoor recreation**, and retail and entertainment offerings.

Mixed-use areas on both sides of Interstate 90, as well as Bellevue College, anchor the neighborhood as vibrant hubs for living, working, gathering, learning, and fostering community.



Eastgate: Neighborhood Identity

S-EG-N1. Facilitate Eastgate as a year-round recreation and tourism destination by increasing opportunities for cultural and sports facilities and entertainment.

S-EG-N3. Minimize loss of trees and increase tree canopy in areas that do not meet City canopy goals, prioritizing streetscapes, publicly owned properties, and environmentally sensitive areas.

S-EG-N4. Support and expand beautification initiatives to steward and maintain trails, streetscapes, and natural areas.



Eastgate: Community Gathering Spaces (1)

Community Partnerships

S-EG-N21. Partner with community organizations, faith-based properties, and private partners to expand opportunities for affordable gathering places, especially within underutilized first-floor spaces.

S-EG-N22. Coordinate with Bellevue School District on the joint use of recreational facilities for public use.

S-EG-N24. Encourage the development and expansion of outdoor public spaces, including adjacent to Bellevue Airfield Park and within the Eastgate Transit Oriented Development, to accommodate cultural events, markets, and infrastructure that supports existing park facilities.



Eastgate: Community Gathering Spaces (2)

Parks and Open Space Network

S-EG-N25. Provide a network of active transportation connections that link nearby community parks, including Bellevue Airfield Park, Robinswood Park, Eastgate Park, with other parks, schools, and destinations that serve the neighborhood area.

S-EG-N26. Work to acquire property or secure easements on private property to provide additional entry points into local trails and parks.

S-EG-N27. Acquire parcels suitable for neighborhood parks that are integrated into the parks and open space network and accessible by active transportation.



Eastgate: Community Gathering Spaces (3)

Bellevue Airfield Park

S-EG-N28. Support the development of Bellevue Airfield Park as a community park reflective of neighborhood identity and programming needs.

S-EG-N29. Support the development of a regional aquatic facility that is connected to its surroundings and serves a full range of recreation, health, and wellness needs.



Council Adopted 9/17/24 – Resolution 10414



Eastgate: Mobility and Access

S-EG-N32. Support future phases to complete the Mountains to Sound Greenway trail through Eastgate between 150th Avenue SE and Lakemont Boulevard SE.

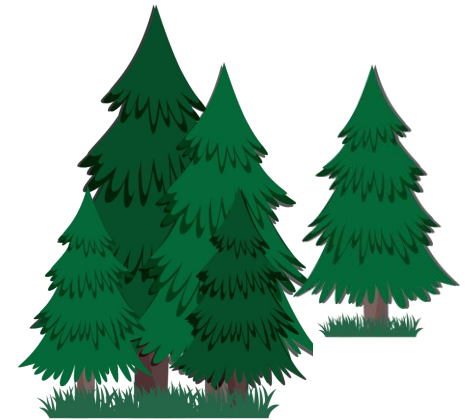
S-EG-N33. Provide safe and abundant access to the Mountains to Sound Greenway trail.



Eastgate: Environment

S-EG-N42. Explore opportunities to integrate nature trails and viewing areas into streams and greenbelts.

S-EG-N43. Increase environmental education opportunities to highlight and protect local streams and wildlife.



Gathering Space Improvements

- Plan includes concept map visualizing opportunities and supporting policies around improving community gathering spaces



Third Places with Community Partners

- Partnerships with community groups, business owners, and property owners to develop spaces for people to gather and socialize



Potential Park Opportunities

- New neighborhood-scale parks, especially in areas not well-served by parks today



Enhanced Active Transportation Connections

- Streets, paths, and trails that provide improved walking and biking experience to neighborhood destinations



Environmental Enhancements

- Improvements to natural features (wetlands, lakes, and streams) to support ecological function and habitat



Thresholds

- Markers into special destinations in the neighborhood, such as distinct landmarks, natural features, signs, or public art

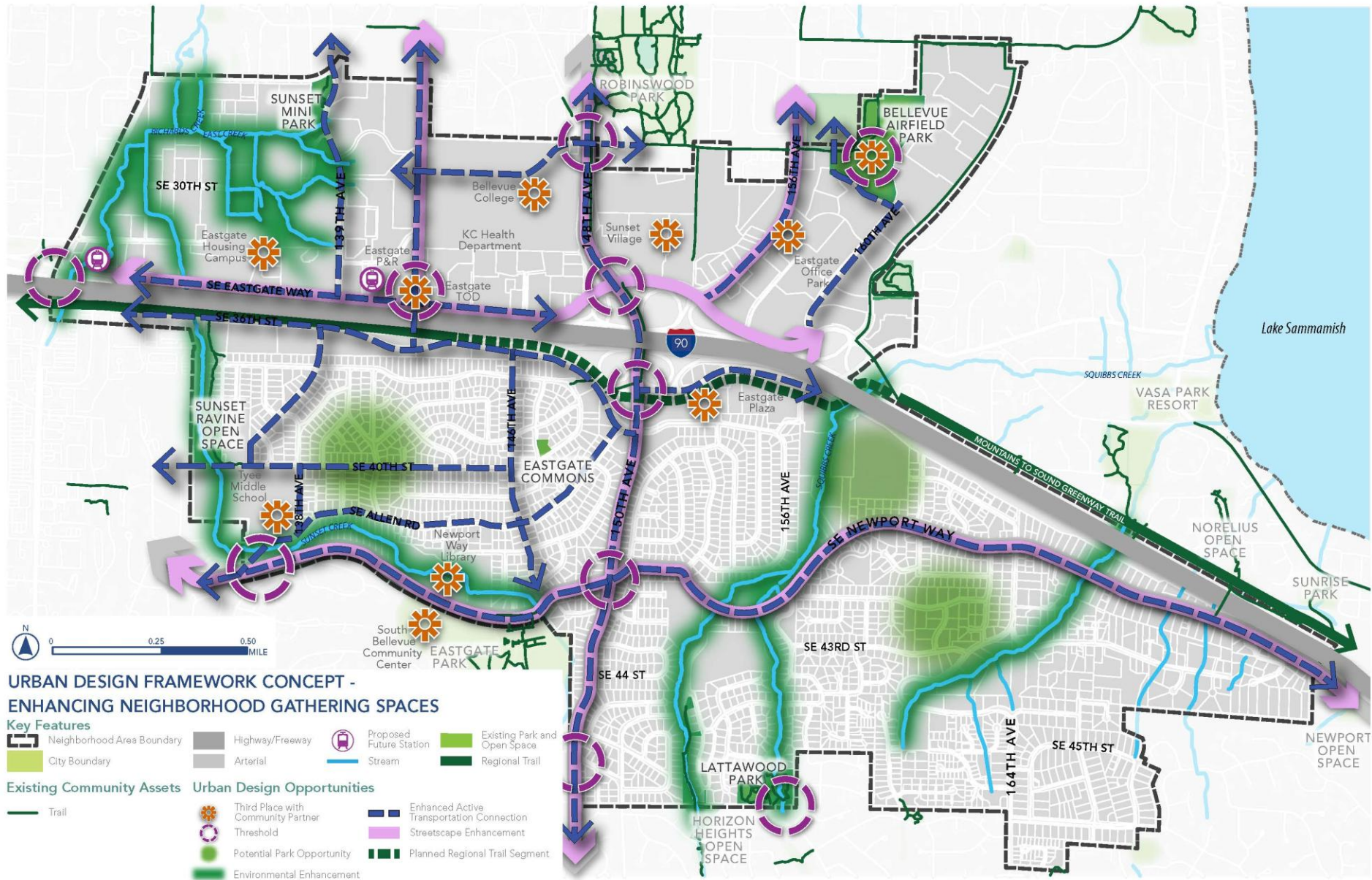


Streetscape Enhancement

- Landscape, lighting, and other pedestrian amenities to make for more attractive, safe, and comfortable corridors



Eastgate Gathering Space Concept



Discussion

Do draft policies provide adequate direction to inform the development of Parks, Recreation, and Open Space services and investments to support Eastgate's vision?



Factoria Values and Assets

Key Values

- Safety
- Diversity and inclusiveness
- Accessibility and connectivity
- Affordability

Neighborhood Assets

- Diverse and international retail options
- Convenience of meeting daily needs close to home
- Easy highway access



Submitted by participants through Engaging Bellevue



Factoria Vision Statement

Factoria is a **locally rooted, globally connected** neighborhood and major employment center that welcomes people from around the world to live, work, shop, and learn.

Centered around its vibrant commercial core, Factoria is anchored by a strong network of local businesses and diverse retail offerings, with affordable housing and **nature-oriented gathering spaces that bring people of all backgrounds together.**

A walkable, pedestrian oriented design, complemented by strong access to transit and regional transportation networks, supports Factoria as a connected and thriving community.



Factoria: Community Gathering Spaces

S-F-N15. Acquire parcels suitable for parks, with emphasis on neighborhood parks, where such parcels can have active transportation access.

S-F-N16. Collaborate with Factoria Mall to enhance its role as a place for community gathering and events.

S-F-N17. Collaborate with community, faith-based, and private partners to provide accessible, affordable, and welcoming community spaces.

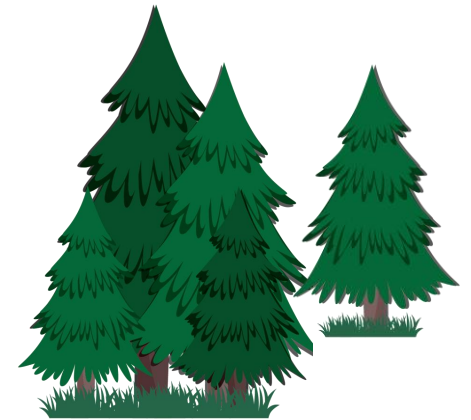
S-F-N19. Encourage the Bellevue School District to include community-serving uses in the redevelopment of its property.



Factoria: Environment

S-F-N30. Increase tree canopy in areas that do not meet City canopy goals, prioritizing streetscapes, publicly owned properties, and environmentally sensitive areas.

S-F-N31. Secure easements and support development of new and enhanced connections to expand access to nearby parks and trails, including Coal Creek Park and Sunset Ravine Open Space.



Factoria: Neighborhood Identity, Mixed Use Centers, Mobility

Neighborhood Identity

S-F-N4. Support and expand beautification initiatives to steward and maintain trails, streetscapes, and natural areas.



Mixed Use Centers

S-F-N11. Encourage the integration of plazas and flexible public spaces to make the Mixed Use Center more vibrant and engaging.

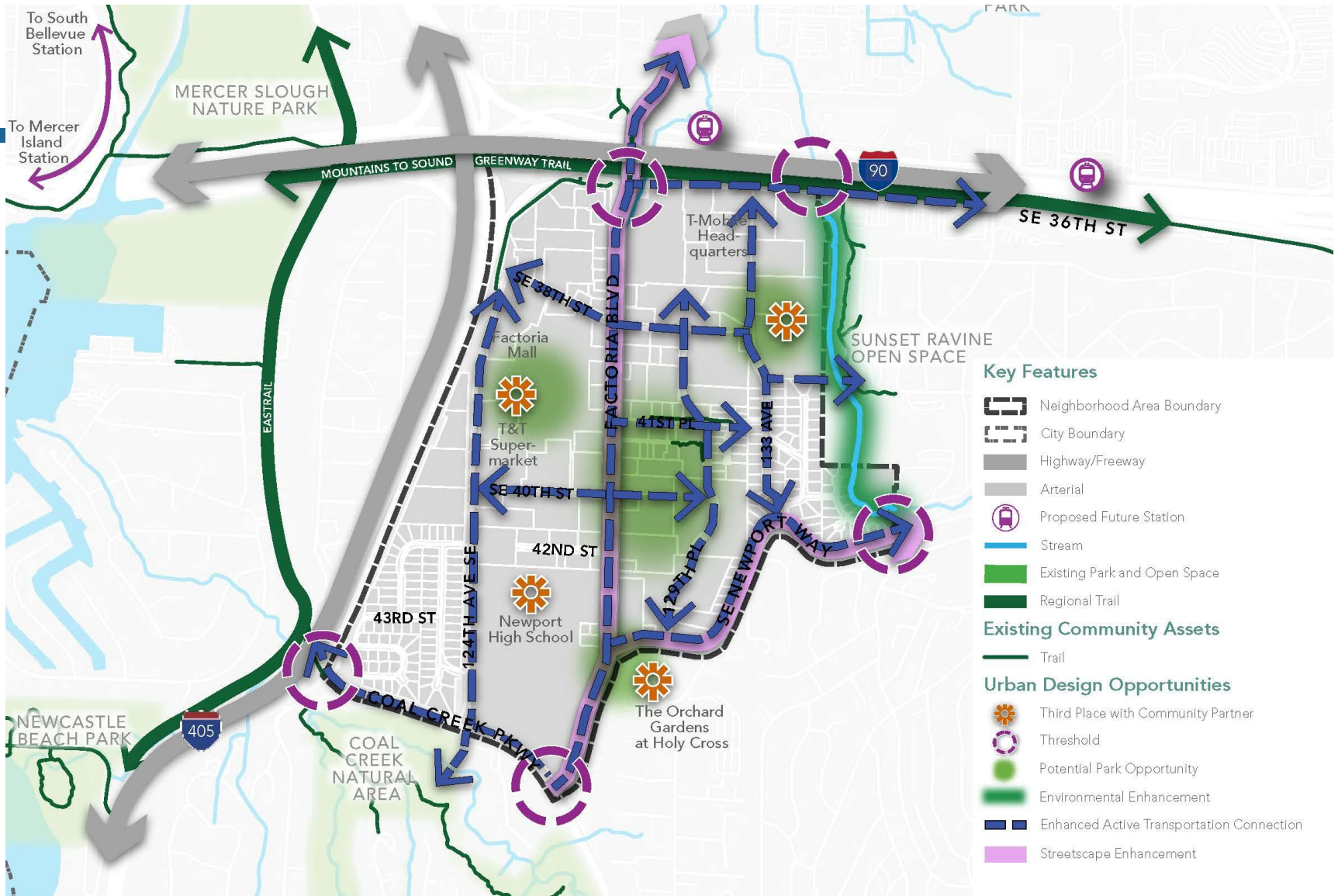


Mobility and Access

S-F-N27. Provide multilingual signage and wayfinding with direction to neighborhood destinations, transit, and active transportation facilities, highlighting the Mountains to Sound Greenway trail.



Factoria Gathering Space Concept



URBAN DESIGN FRAMEWORK CONCEPT -
ENHANCING NEIGHBORHOOD GATHERING SPACES



Discussion

Do draft policies provide adequate direction to inform the development of Parks, Recreation, and Open Space services and investments to support Factoria's vision?



Next Steps

Staff will consider and incorporate input from the Parks and Community Services Board as part of the final draft policies.

Final draft policies for the Eastgate and Factoria neighborhood area plans will be reviewed with Planning Commission starting in June.





Thank You!

Justin Panganiban, AICP, Senior Planner/Urban Designer
greatneighborhoods@bellevuewa.gov

