

# Introduction to BelRed Look Back and Scope of Work Topics



**City Council Study Session  
January 22, 2018**

**Mike Brennan, DSD Director  
Mac Cummins AICP, PCD Director  
Emil King AICP, Strategic Planning Manager  
Carol Helland, Code and Policy Director**



# Tonight's Study Session

- ❑ Staff seeking direction from Council on the topical areas to be included in the BelRed Look Back process
- ❑ Staff will provide:
  - Overview of the BelRed vision
  - Summary of implementation actions to date
  - Implementation challenges
- ❑ Staff will return to Council in February for approval of detailed scope of work, schedule, and guiding principles

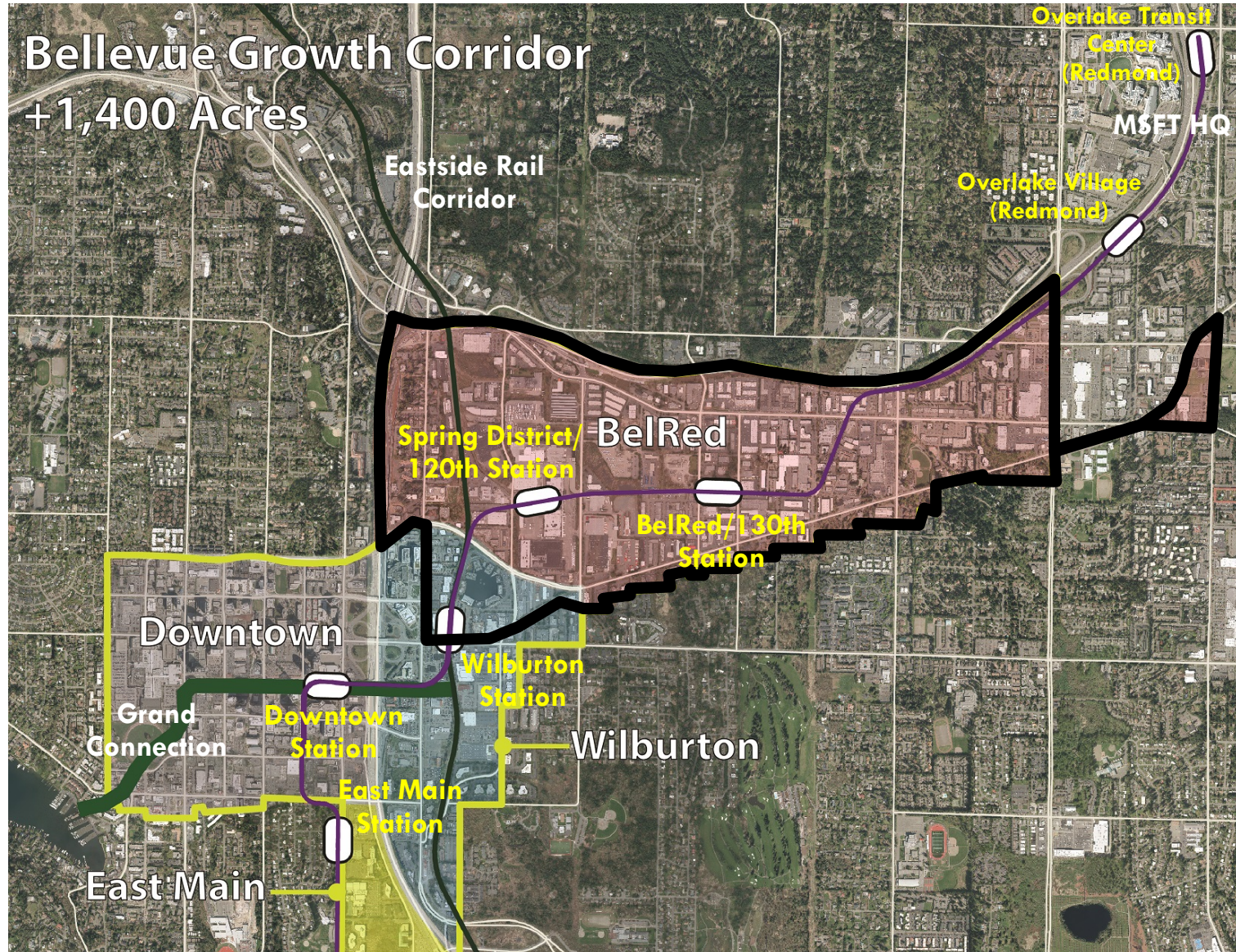
# BelRed Look Back Topics

Recommended topics for BelRed Look Back analysis:

- ❑ Topic 1: Targeted review of specific elements of BelRed policy and regulatory framework
- ❑ Topic 2: Analysis of funding and development of parks, open space, and stream enhancements
- ❑ Topic 3: Analysis of additional mechanisms to accelerate development in the 130th Avenue station area along with necessary public amenities, such as parks, stream restoration and open space



# Growth Corridor, including BelRed



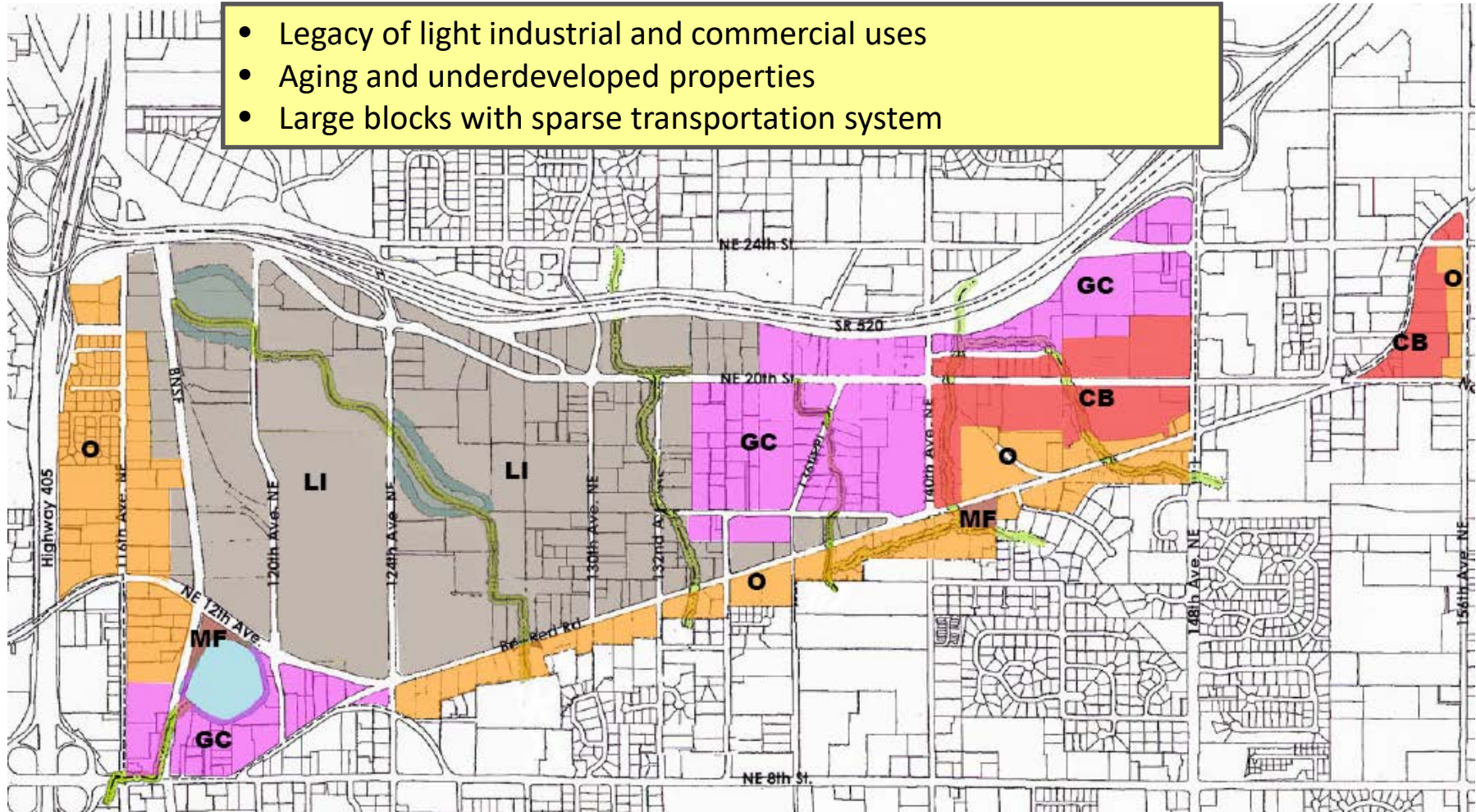


# East Link Light Rail



# BelRed Zoning: Pre-2009

- Legacy of light industrial and commercial uses
- Aging and underdeveloped properties
- Large blocks with sparse transportation system



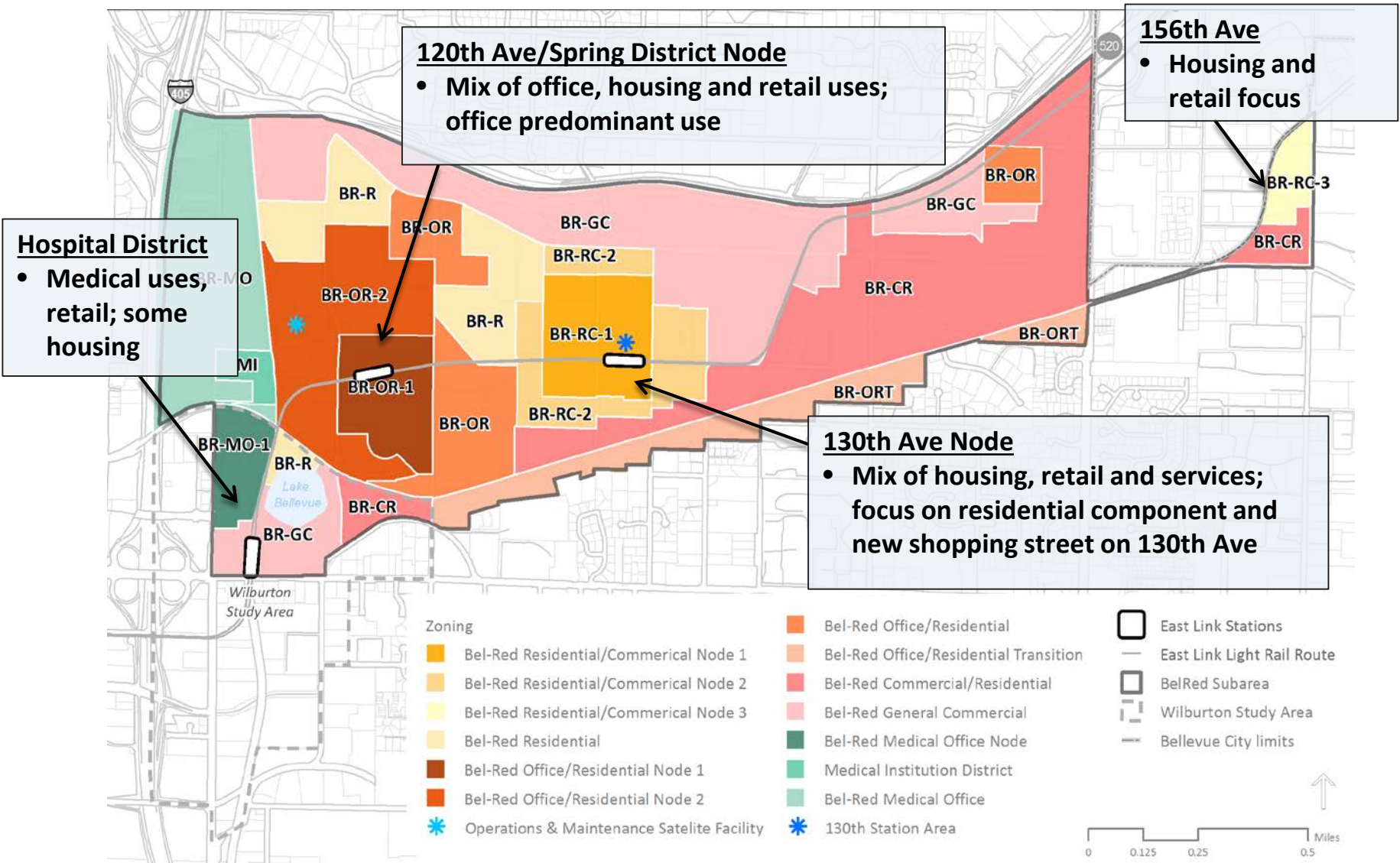
# The New BelRed Vision: 2009

- ▣ Entirely new BelRed Subarea Plan and zoning provisions
- ▣ *By 2030 BelRed area expected to generate:*
  - 10,000 new jobs and 5,000 new housing units
  - Affordable housing through incentive system
  - New compact, transit-oriented neighborhoods
  - Restored streams and ecological functions
  - New parks, trails, bike paths and amenities
  - Significant new economic development opportunities



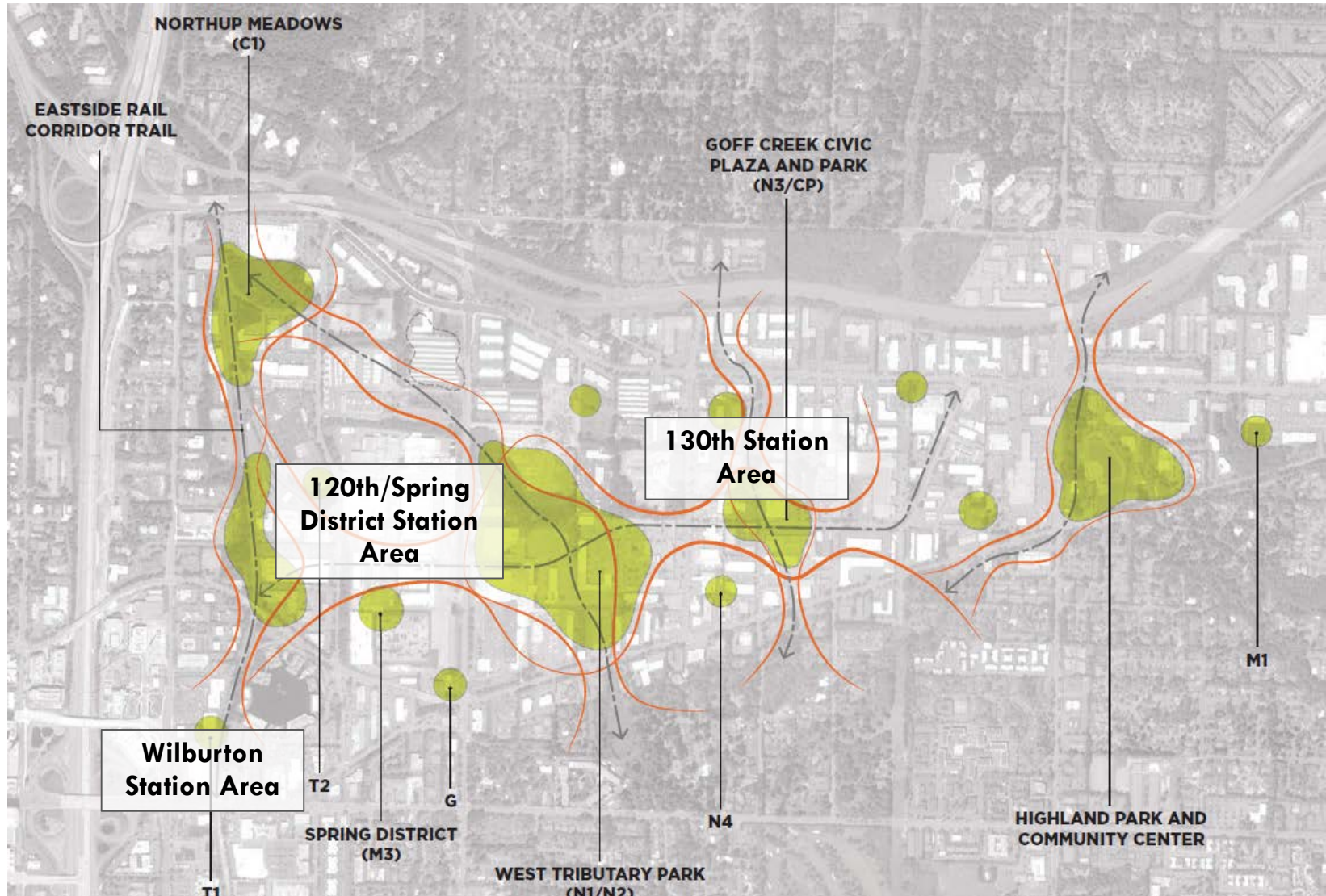


# Adopted BelRed Plan: 2009

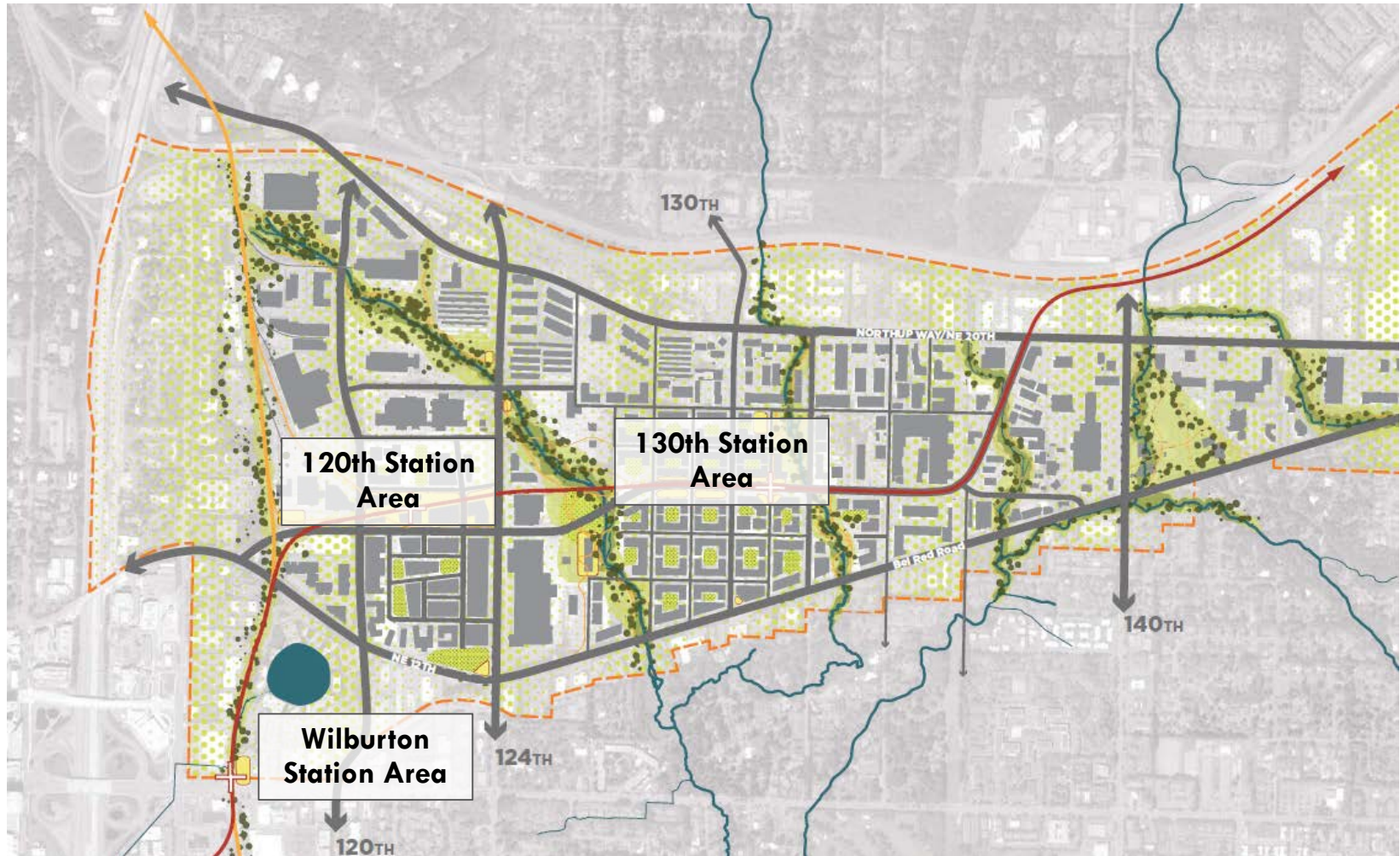




# Park & Open Space Opportunities



# BelRed Stream Restoration





# BelRed – Spring District



Downtown  
Bellevue

Spring  
District



# Spring District: 2009

The screenshot displays a web-based map application interface. At the top, a browser address bar shows the URL: <http://mapshotviewer/SilverlightViewer/Viewer.html?Viewer=Mapshot#>. The application title bar includes "Office 365", "Professional Photos", "MapShot", "Google", "City of Bellevue - Calendar", and "Analytics".

The main interface features a navigation toolbar with icons for Pan, Zoom In, Zoom Out, Full Extent, Previous Extent, and Next Extent. A scale bar indicates a scale of 1:5,000. A "Point Identify" tool is also visible. A "Jump to a map bookmark..." dropdown menu is present. A "Help" section includes "What's This?", "Resource Site", and "Help" links.

The "Map Layers" panel on the left is expanded, showing a list of layers. Under "City of Bellevue Layers", several categories are checked: Enterprise, Utilities, Public Safety, Civic Services, Environmental, Planning, Transportation, Parks, Property and Address, and Landforms. Under "Base Maps", the "2007 Aerial Photos" layer is selected, with other options including 2017-Sept Aerial Photos, Streets Basemap, 2017-Sept Aerial Photos..., 2015 Aerial Photos, 2012 Aerial Photos, 2009 Aerial Photos, 2005 Aerial Photos, 2001 Aerial Photos, and 1999 Aerial Photos. A "Show Legend" button is located at the bottom of the panel.

The main map area shows an aerial view of the Spring District in Bellevue, WA. A large black outline highlights a specific area bounded by NE Spring Blvd, NE 12th St, and NE 14th St. The map includes labels for streets such as NE Spring Blvd, NE 12th St, NE 14th St, NE 15th Pl, Lake Bellevue Rd, and NE Bellevue-Redmond Rd. A scale bar at the bottom left indicates 500 feet and 100 meters. A "Filter..." dropdown is located at the bottom of the map area. The "City of Bellevue" logo is visible in the bottom right corner.



# Spring District: 2017

The screenshot displays the MAPSHOT web application interface. At the top, the 'MAPSHOT' logo is visible. Below it, a navigation bar includes 'Getting Around', 'Maps & Data Sources', 'Tasks', 'Measure', 'Identify', and 'Search'. The main interface features a toolbar with icons for 'Pan', 'Zoom In', 'Zoom Out', 'Full Extent', 'Previous Extent', and 'Next Extent'. A 'Scale: 1: 5,000' indicator is present, along with buttons for 'Point Identify', 'Jump to a map bookmark...', 'Help', 'What's This?', and 'Resource Site'. The 'Map Layers' panel on the left is expanded, showing 'City of Bellevue Layers' and 'Base Maps'. Under 'City of Bellevue Layers', several categories are checked: Enterprise, Utilities, Public Safety, Civic Services, Environmental, Planning, Transportation, Parks, Property and Address, and Landforms. Under 'Base Maps', '2017-Sept Aerial Photos' is selected. A 'Show Legend' button is at the bottom left. The main map area shows an aerial view of the Spring District with a black outline highlighting a specific area. Labels within this area include 'East Link Construction' at the top, 'REI site' in the center, 'Hsg' (Housing) on the left, 'Park' in the middle, and 'GIX' (Golf and Industry) at the bottom. Below the 'GIX' label, the text 'Housing and Daycare' is written. The map also shows surrounding streets like NE Spring Blvd, NE 12th St, and NE Bellevue Redmond Rd.





# Residential Development





# Global Innovation Exchange





# REI Headquarters



# Direction Requested from Council

- Staff seeking direction on the topical areas to include in the BelRed Look Back process
  - Topic 1: Targeted review of specific elements of BelRed policy and regulatory framework
  - Topic 2: Analysis of funding and development of parks, open space, and stream enhancements
  - Topic 3: Analysis of additional mechanisms to accelerate development in the 130th Avenue station area along with necessary public amenities, such as parks, stream restoration and open space
- Staff will return to Council in February for approval of a scope of work, schedule, and guiding principles