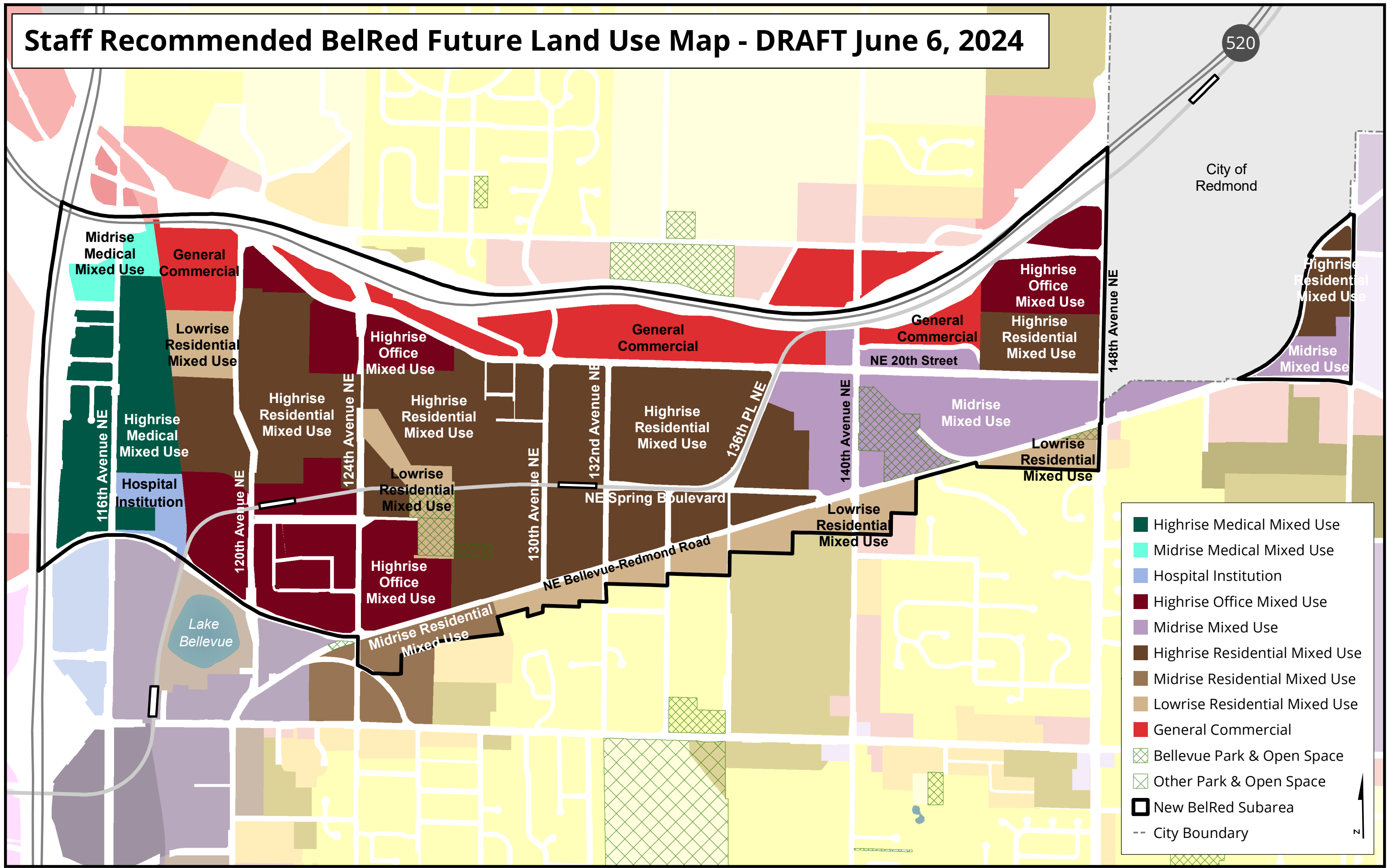


Staff Recommended BelRed Future Land Use Map - DRAFT June 6, 2024



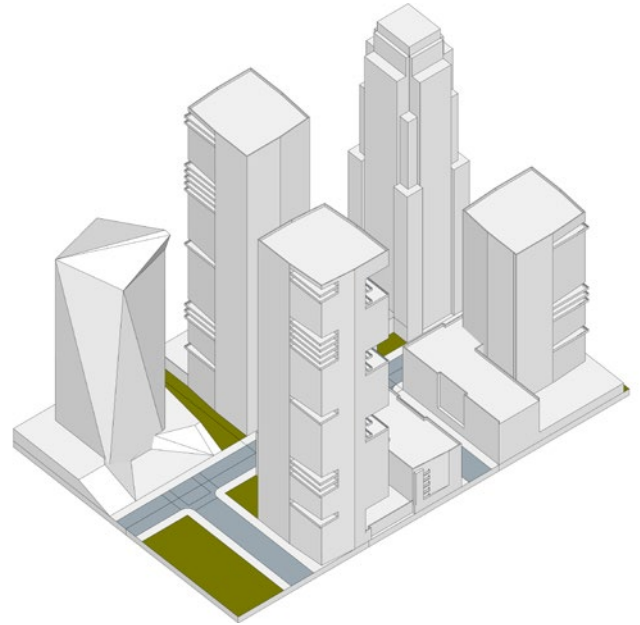
0 0.25 0.5 1 1.5 2 Miles

Future Land Use Map Key

MIXED USE

Downtown

The purpose is to provide an area for a mix of housing, retail, service, office and complementary uses at the **highest scale and density** (see illustration). The scale and density may be reduced by overlay districts.



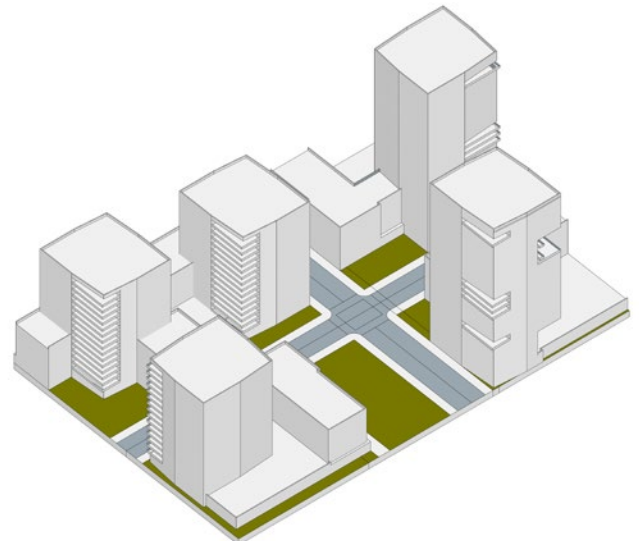
Highest scale and density

Urban Core

The purpose is to provide an area for a mix of housing, retail, service, office and complementary uses at the **highest scale and density** (see illustration), close to Downtown and light rail stations.

Highrise Mixed Use

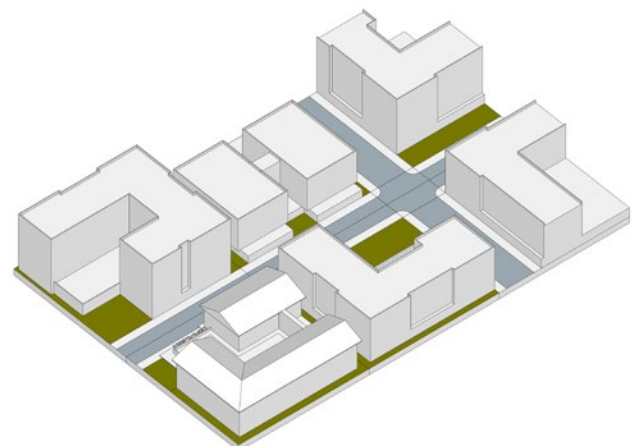
The purpose is to provide an area for a mix of housing, retail, service, office and complementary uses at a **high scale and density** (see illustration).



High scale and density

Midrise Mixed Use

The purpose is to provide an area for a mix of housing, retail, service, office and complementary uses at a **middle scale and density** (see illustration).



Middle scale and density

Lowrise Mixed Use

The purpose is to provide an area for a mix of housing, retail, service, office and complementary uses at a **low scale and density** (see illustration).

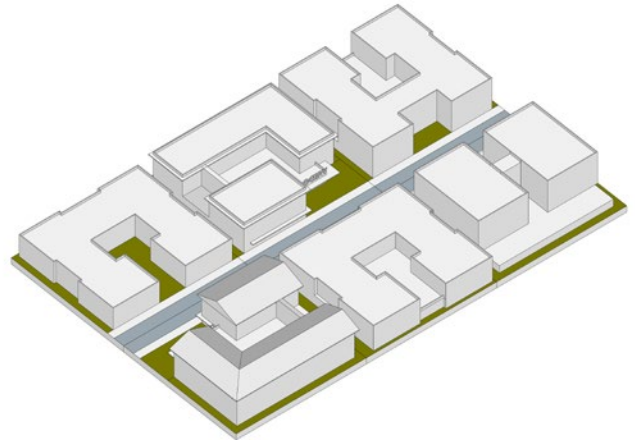
Highrise Office Mixed Use

The purpose is to provide a mix of office, housing, retail, service and complementary uses with a focus on office uses at **high scale and density** (see illustration).



Midrise Office Mixed Use

The purpose is to provide a mix of housing, retail, service, office and complementary uses with a focus on office uses at **middle scale and density** (see illustration).



Low scale and density



Lowrise Office Mixed Use

The purpose is to provide a mix of office, housing, retail, service and complementary uses with a focus on office uses at **low scale and density** (see illustration).



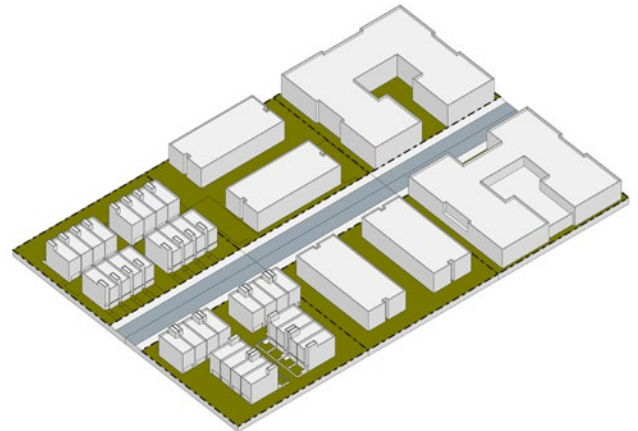
Highrise Medical Mixed Use

The purpose is to provide a mix of laboratories, office, housing, retail, service, and complementary uses with a focus on medical uses at **high scale and density** (see illustration).



Midrise Medical Mixed Use

The purpose is to provide a mix of laboratories, office, housing, retail, service and complementary uses with a focus on medical uses at a **middle scale and density** (see illustration).



Middle urban residential scale and density



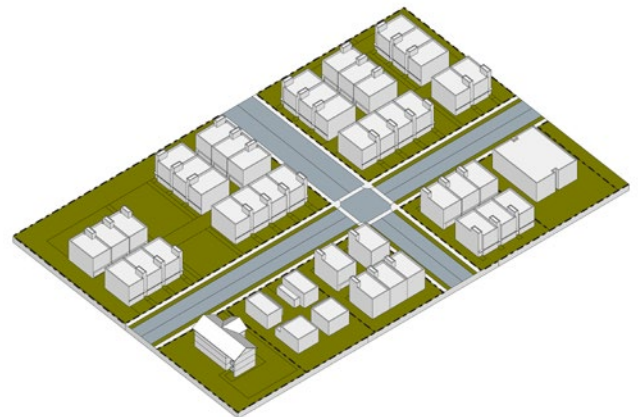
Highrise Residential Mixed Use

The purpose is to provide primarily housing with a mix of retail, service, office and uses that compliment with a focus on housing at a **high scale and density** (see illustration).



Midrise Residential Mixed Use

The purpose is to provide primarily housing with a mix of retail, service, office and uses that compliment with a focus on housing at **middle scale and density** (see illustration).



Lower urban residential scale and density



Lowrise Residential Mixed Use

The purpose is to provide primarily housing with a mix of retail, service, office and uses that complement with a focus on housing at **low scale and density** (see illustration).

RESIDENTIAL

High Density Residential

The purpose is to provide for residential and complementary uses at a **low scale and density** (see illustration), similar to lowrise mixed use.

Medium Density Residential

The purpose is to provide for residential and complementary uses at a **middle urban residential scale and density** (see illustration).

Low Density Residential

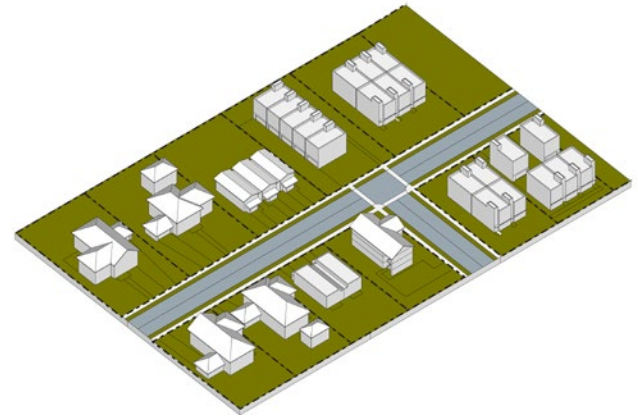
The purpose is to provide for residential and complementary uses at a **lower urban residential scale and density** (see illustration).

Suburban Residential

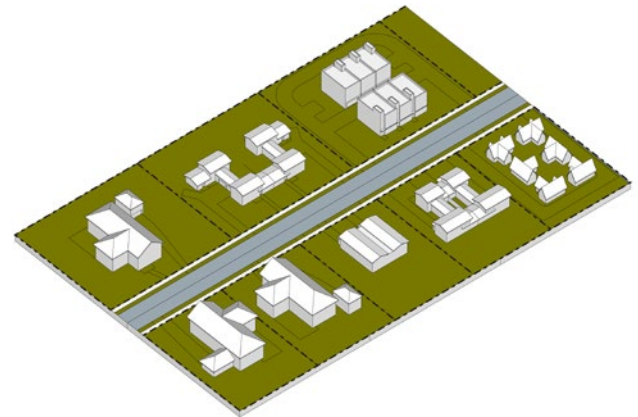
The purpose is to provide for residential and complementary uses at a **typical suburban density** (see illustration).

Large Lot Residential

The purpose is to provide for residential and complementary uses on large lots at a **spacious scale and density** (see illustration).



Typical suburban scale and density



Spacious scale and density

OTHER USES

General Commercial

The purpose of this district is to provide primarily office, retail and service uses.

Light Industrial

The purpose is to provide light industrial uses.

Institutional

The purpose of this district is to provide for institutional uses like colleges.

Hospital Institutions

The purpose is to provide Hospital uses and building styles.