



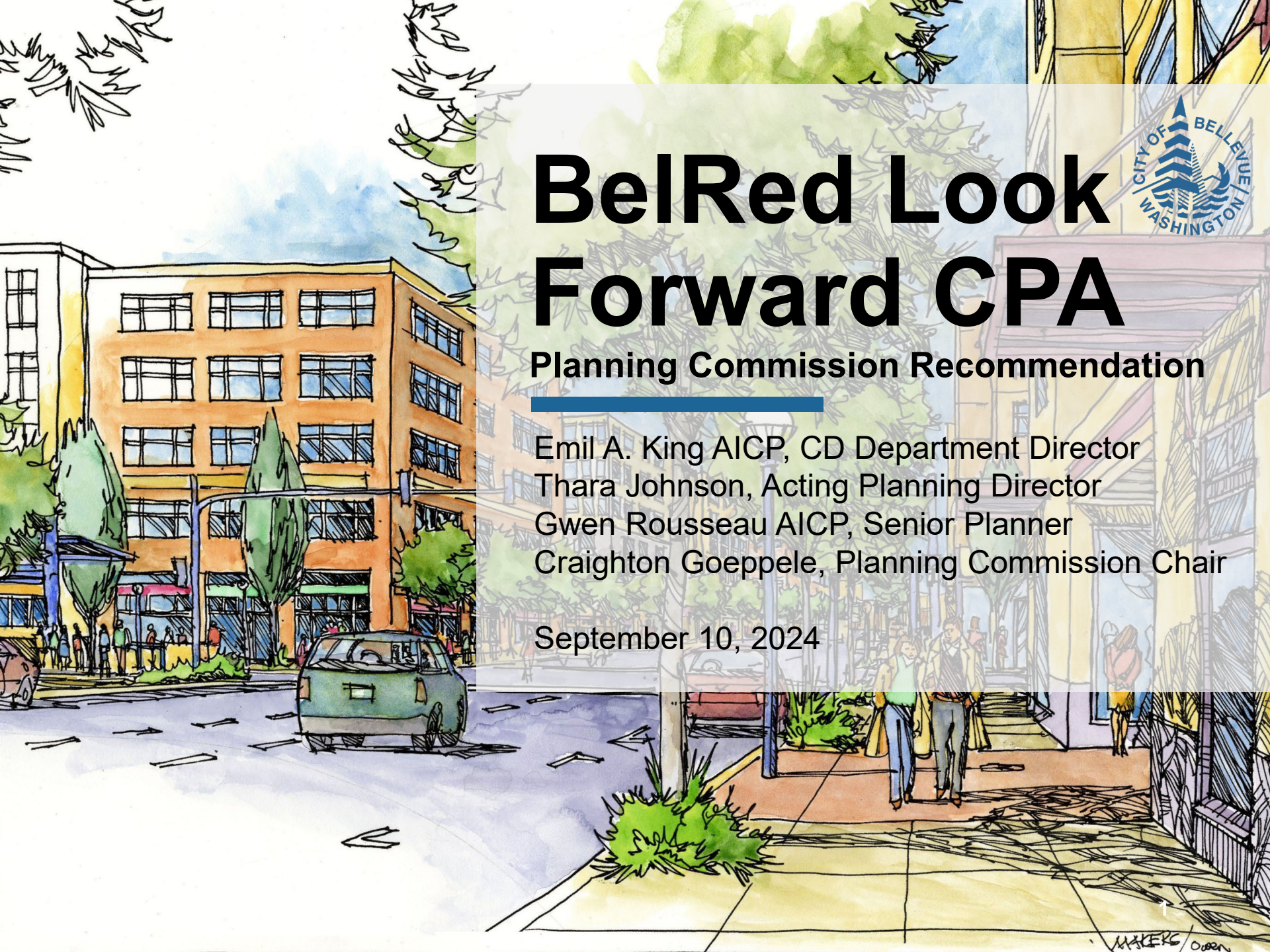
# BelRed Look Forward CPA

## Planning Commission Recommendation

---

Emil A. King AICP, CD Department Director  
Thara Johnson, Acting Planning Director  
Gwen Rousseau AICP, Senior Planner  
Craighton Goepple, Planning Commission Chair

September 10, 2024



MAKERS OBERN



# Direction

---

Consider directing staff to return with an Ordinance approving the 2024 proposed BelRed Look Forward Comprehensive Plan Amendment as recommended by the Planning Commission.





# Agenda

---

1. Background
2. Planning Commission Recommendation
3. Community Engagement and Environmental Review



# BelRed Look Forward

---

## *What?*

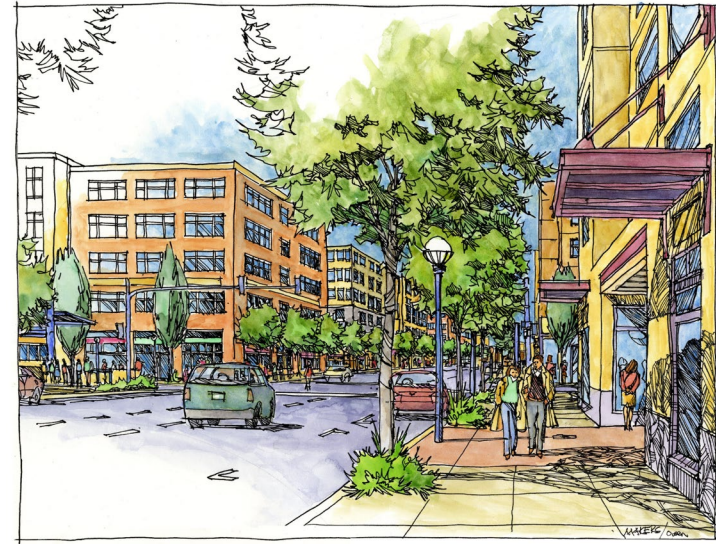
- A planning process to update both subarea plan policies and future land use designations.

## *When?*

- Part of the Comprehensive Plan Periodic Update launched in February 2022.
- Adoption by Council anticipated in Q4 2024.

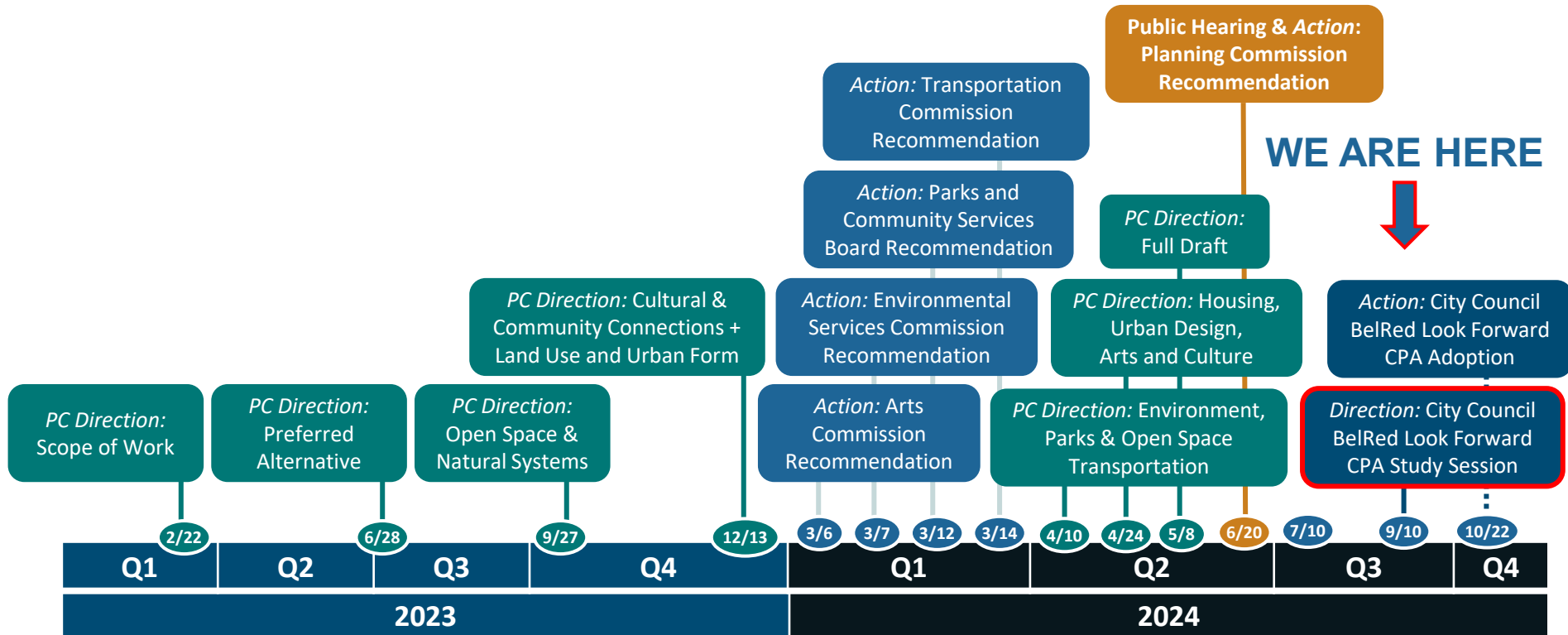
## *Why?*

- To increase capacity for housing and job growth.
- To reflect new information.
- To strengthen and clarify implementation strategies.





# Timeline





# Planning Commission Recommendation

---





# Planning Commission Recommendation

---

Following the public hearing on June 20, the Planning Commission voted unanimously to recommend the BelRed Look Forward Comprehensive Plan Amendment to City Council.

*Craighton Goeppele*  
*Planning Commission Chair*



# Increase Capacity for Growth

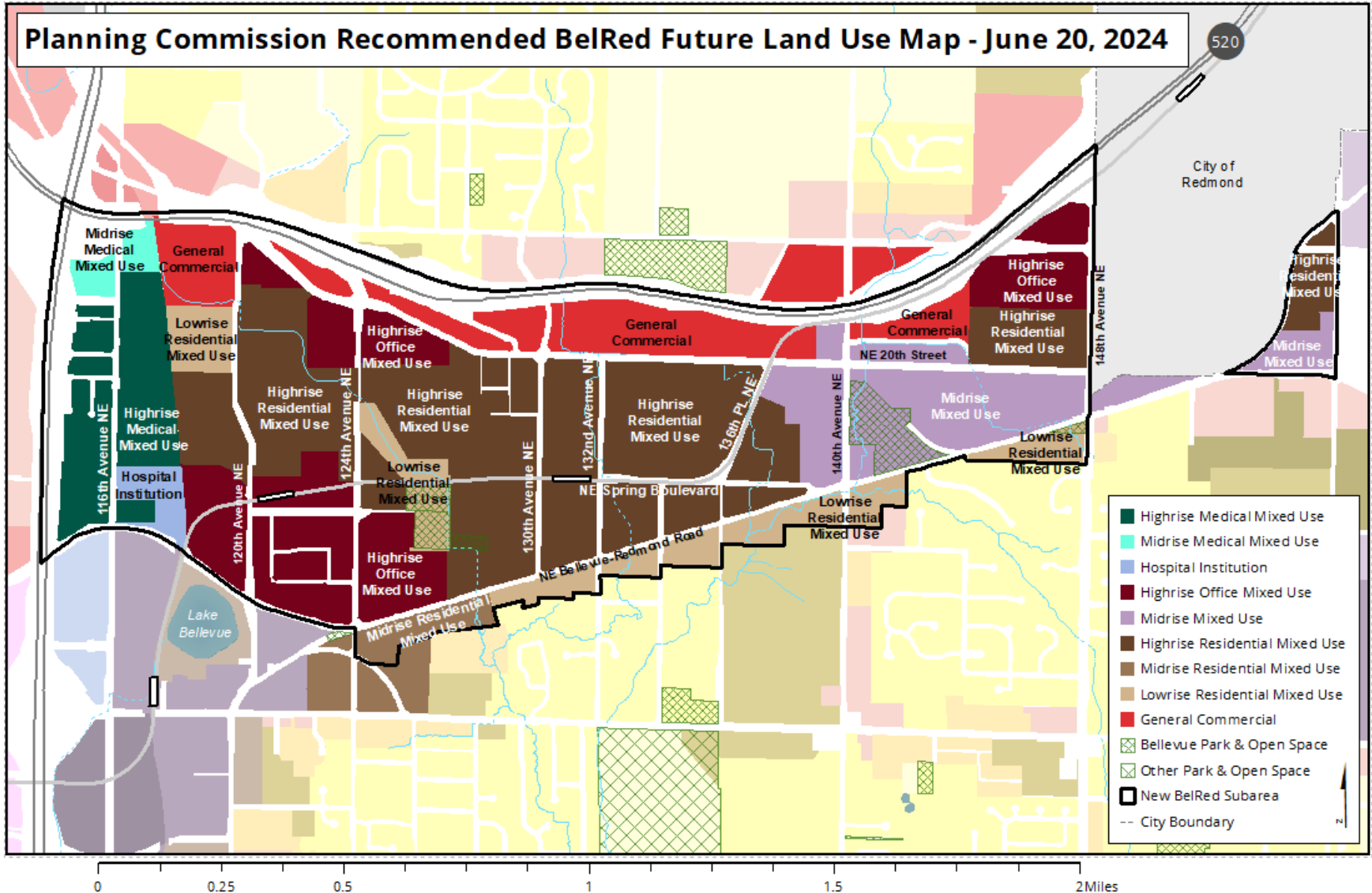
---

1. Expand station area nodes around light rail.
2. Increase maximum building intensity allowed through FAR amenity incentive system.
3. Expand area designated for residential use.
4. Provide for distinct economic centers.





# Future Land Use Map



# Open Space and Natural Systems



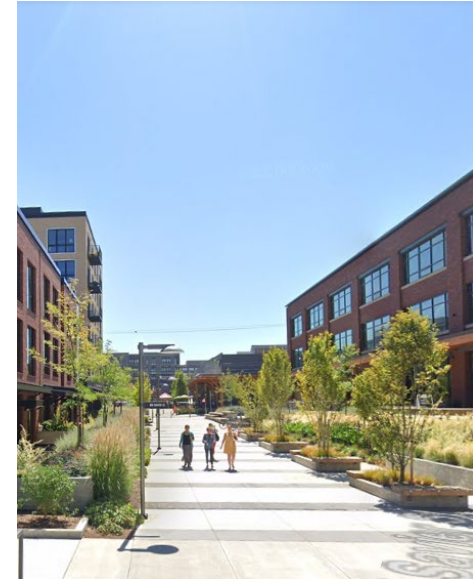
**Improving  
Ecological Functions  
and Resilience**



**Exploring  
Opportunities for  
Regional Stormwater  
Facilities**

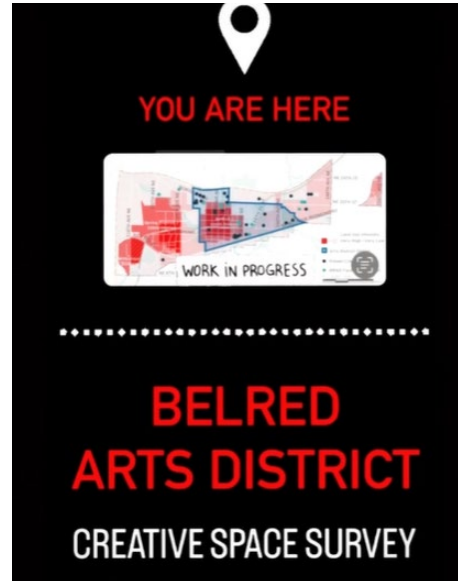


**Working Cross-  
Departmentally  
on Stream  
Rehabilitation and  
Restoration Plans**



**Incorporating Parks,  
Recreation, and  
Natural Amenities  
into Rights-of-Way**

# Cultural and Community Connections



**Growing  
Community  
Capacity**

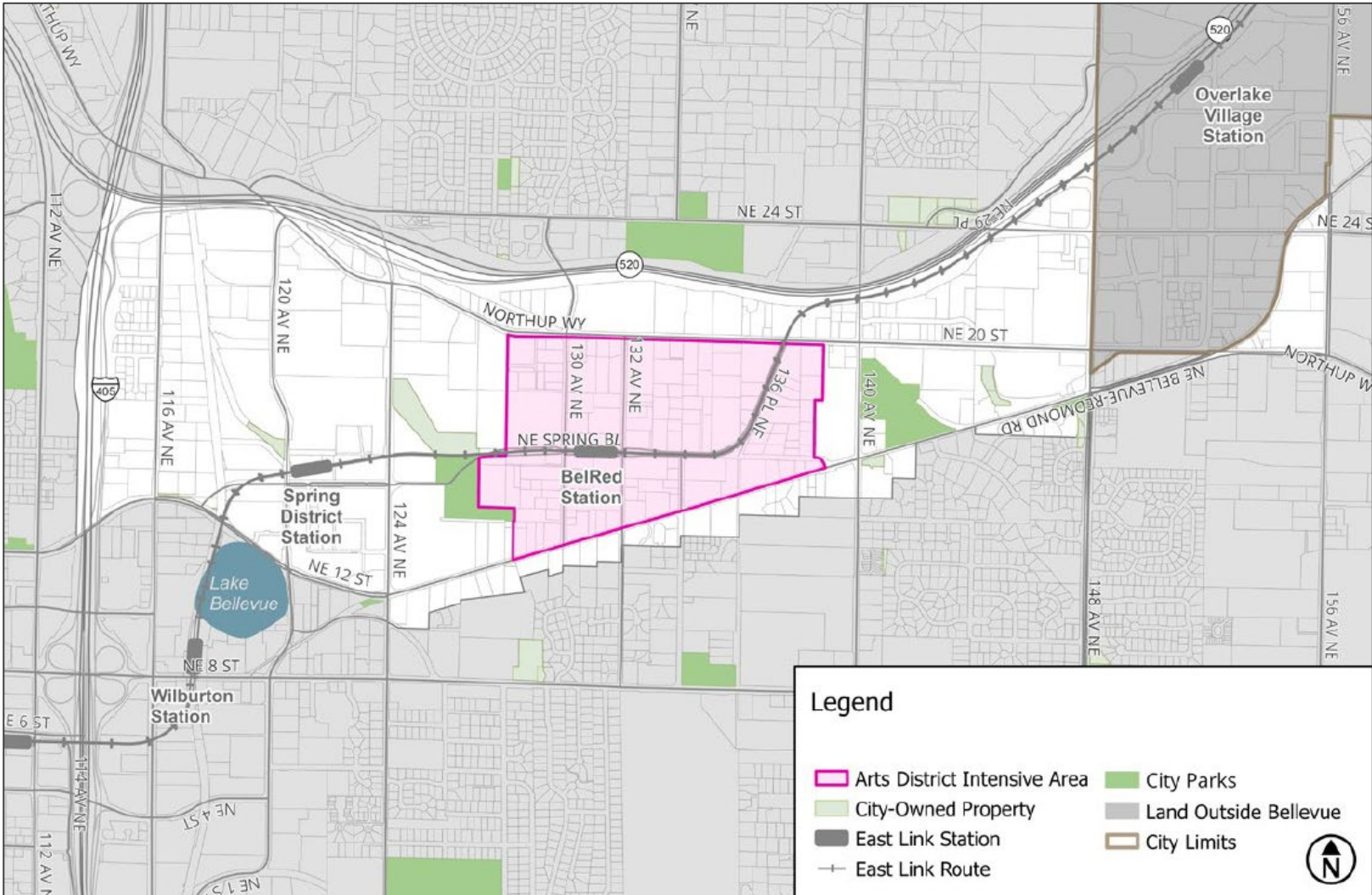
**Building Greater  
Recognition of the  
Arts District**

**Securing Long-Term  
Affordable Arts and  
Cultural Space**

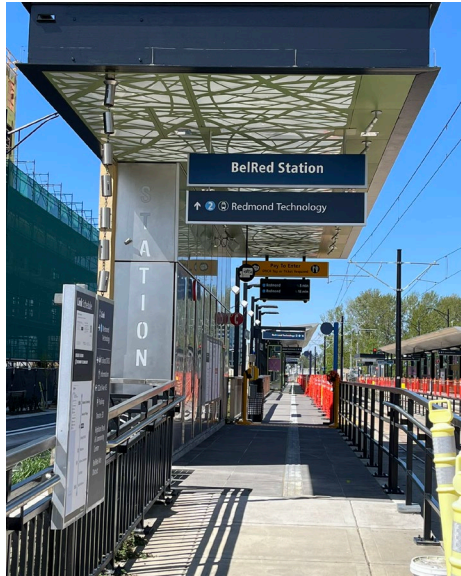
**Fostering  
Community  
Connection and  
Learning**



# Arts District Intensive Area



# Transportation



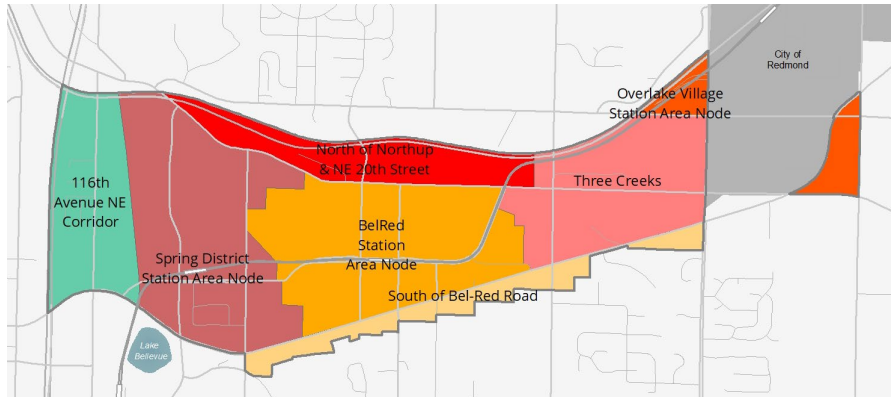
**Investing in a Complete & Connected Multimodal System**

**Working with Providers to Service Light Rail Stations**

**Developing a Multi-Use Trail System with Local & Regional Connections**

**Providing for a Connected, High-Quality Pedestrian Environment**

# Land Use, Urban Design and Housing



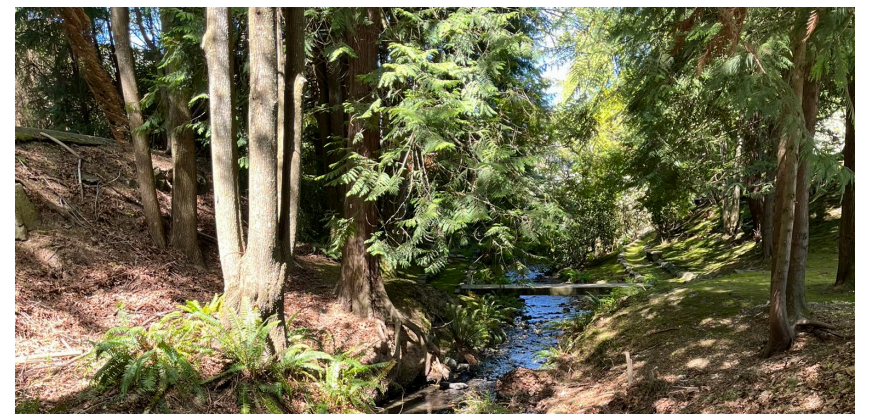
Cultivating distinct economic centers and mixed-Use Neighborhood Districts



Providing for a diverse range of housing and services within each district



Promoting the preservation of small businesses.



Incentivizing amenities that respond to unique site characteristics



# Community Engagement & Environmental Review

---



# Community Engagement

---



## Support for

- Growth near frequent transit
- Broad range of housing
- Stream rehabilitation/restoration
- Park and open space expansion
- Vibrant pedestrian experiences
- Affordable space for arts and culture
- Active transportation connections



# Environmental Review

---

## Key takeaways from EIS

- Increase heights / densities near light rail.
- Mitigate displacement of small businesses.
- Consider environmental health impacts near highways.





# Direction

---

Consider directing staff to return with an Ordinance approving the 2024 proposed BelRed Look Forward Comprehensive Plan Amendment as recommended by the Planning Commission.

