



Comprehensive Plan Periodic Update : Transportation & Capital Facilities

Emil A. King, Planning Director
Kate Nesse, Senior Planner

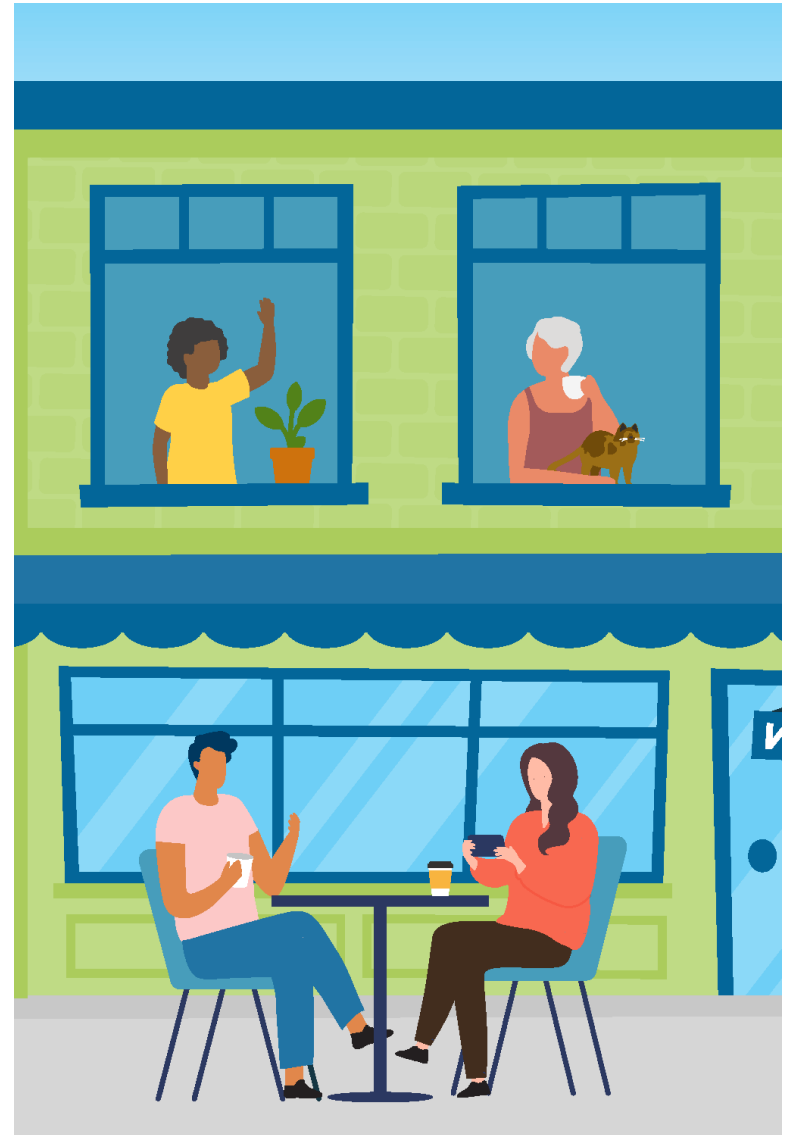
Community Development

Planning Commission | April 10, 2024



Agenda

1. Background
2. Recommended Policy Changes
 - Transportation
 - Capital Facilities
3. Next Steps





Direction

Review policies in:

- Transportation
- Capital Facilities

Direction on issues to address before moving to final draft stage



Background

Date	Elements	
Jan 24	Community Engagement; Economic Development	✓
Feb 14	Land Use & Future Land Use Designations	✓
Feb 28	Future Land Use Map	✓
Mar 13	Neighborhoods; Climate & Environment; Parks (rec from PRSB)	✓
Mar 27	Utilities (rec from ESC) Urban Design & the Arts (rec from AC)	✓
April 3	Housing; Human Services (rec from HSC)	✓
Apr 10	Transportation; Capital Facilities	

Background

Date	Elements
May 8	Community Comments Addressed; Future Land Use Map Updates, PC Comments Addressed
May 22	Subarea Plan Policies; Follow-up
June 20	Public Hearing I
June 26	Public Hearing II; Recommendation

Tentative



Transportation



Recent Amendments

- 2021 Updates to support the Mobility Implementation Plan
- 2022 Updates to support new Curb Management Plan



Transportation Commission Recommendation



Transportation Commission, after 7 meetings, unanimously recommended the amendments to policies in the Transportation element.

Community Feedback

Support

- Public Transit investments
- Safety of pedestrians and bicyclists
- Planning for all modes of transportation

Missing

- More investments in public transit
- Closer connection to climate change



Minor Changes

- Policy clarification
- Relationship to functional plans
- Current language
- Remove policies regarding completed projects



Subsection Header

Recommended change

Neighborhood Protection Residential Safety and Livability

Reasoning:

- Residential clarifies the geographic focus of the subsection
- Safety and Livability clarifies the outcomes sought in the subsection

Climate Change

Recommended change

TR-31. Design, maintain, and protect the transportation network system to be resilient to disaster and impacts related to climate change.

Reasoning:

- Maintain the resilience to disasters generally
- Called out impacts related to climate change specifically as they may not always rise to the level of disaster but are significant nonetheless.

Climate Change

Recommended change

TR-56. Allow for repurposing of travel lanes for other uses such as parking, transit or pedestrian and bicycle facilities where excess vehicular capacity exists at peak periods and/or to optimize person throughput along a corridor.

Reasoning:

- Clarifies the measurement of “excess vehicular capacity.”

Grand Connection

Recommended change

TR-103. Promote and support the design, development and use of the Grand Connection as a regional active transportation facility.

Reasoning:

- Support planning for the Grand Connection as part of the transportation network in Bellevue.
- Provides greater flexibility to collaborate with Wash. DOT to use the right-of-way to provide a bridge over I-405.

Mountains-to-Sound Greenway

Recommended change

TR-106. Integrate the Mountains-to-Sound Greenway Trail into the I-90 corridor through Bellevue.

Reasoning:

- Support planning for the Mountains-to-Sound Greenway as part of the transportation network in Bellevue.

Vehicle Electrification

Recommended change

TR-130. Partner with state, county, and local jurisdictions and agencies on mobility electrification.

Reasoning:

- Support planning for vehicle electrification.



Transportation

Additional policy discussion





Capital Facilities



Community Feedback

Support

- Increased focus on sustainability

Missing

- Policies supporting more performing arts and cultural exchange



Minor Changes

- Policy clarification
- Current language



Equity

Recommended change

CF-2. Provide affordable and equitable access to capital facilities and public services to all communities, especially the historically underserved. Prioritize investments to address disparities.

Reasoning:

- Ensure that the disparities in access to community facilities is addressed in future decisions about capital facilities.

Equity

Recommended change

CF-18. Plan capital investments to engage relevant communities to identify, promote, and preserve objects and sites of cultural, historical, artistic, and aesthetic importance.

Reasoning:

- Supports CPP-PF-25.
- Supports historic preservation aims.

Equity

Recommended change

CF-30. Consider climate change, economic, equity, and health impacts when siting and building essential public services and facilities.

Reasoning:

- Essential Public Facilities are facilities, like airports that are regional amenities but may negatively impact close neighbors.
- Directs consideration of many factors in their siting in Bellevue.

Climate Change

Recommended change

CF-3. Plan for the long-term ~~renewal~~retrofit or replacement of aging capital facilities as needed to ~~maintain target service levels~~comply with green facility requirements and meet performance standards.

Reasoning:

- Ensure facilities that are positive for the environment in Bellevue.

Climate Change

Recommended change

CF-15. Maintain the post-disaster Response and Recovery Plan ~~that ensures, including~~ clear staff roles and responsibilities, to ensure the city's capability to prepare for, withstand, and rapidly recover and reconstruct from a disaster. ~~climate impacts and other disasters.~~

Reasoning:

- Include considerations for climate change disasters.

Climate Change

Recommended change

CF-16. Plan capital investments to prepare to withstand, rapidly recover from, and promote community resiliency against climate impacts, including extreme heat, wildfire, smoke, extreme precipitation, drought, and flooding.

Reasoning:

- Include considerations for climate change disasters in all capital investments.

Climate Change

Recommended change

CF-17. Plan capital investments to support efficient, equitable and environmentally sustainable outcomes through facility condition assessments, including consideration for climate resilience, risks, and the present cost of non-investment.

Reasoning:

- Use facility condition assessments to identify and mitigate climate risks in existing capital facilities.

Sustainable Practices

Recommended change

CF-19. Reduce solid waste at capital facilities through a comprehensive program and purchasing policies that promote processing and recovery of recyclable materials, compostable food and yard waste, and disposable items to promote a circular economy.

Reasoning:

- Promote sustainable waste streams.

Sustainable Practices

Recommended change

CF-20. Incorporate Low Impact Design (LID) standards and operational strategies into all relevant capital projects and ongoing maintenance.

Reasoning:

- Promote sustainable storm and surface water management.

Sustainable Practices

Recommended change

CF-21. Reduce energy use and greenhouse gas emissions in municipal operations and facilities by supporting renewable energy, electrification, and energy conservation measures.

Reasoning:

- Promote sustainable energy practices

Sustainable Practices

Recommended change

CF-22. Require all capital projects to meet or exceed green certification standards for capital facilities unless determined infeasible by interdepartmental review.

Reasoning:

- Promote sustainable building practices.

Sustainable Practices

Recommended change

CF-23. Ensure that all electric vehicle charging infrastructure sited on city property is designed to charge a wide array of vehicles and is equitably distributed throughout Bellevue.

Reasoning:

- Support conversion to electric vehicles.



Capital Facilities

Additional policy discussion





- Transportation
- Capital Facilities

Direction on issues to address before moving to final draft stage





Next Steps

Review the two elements again at the final draft stage

- Address suggested changes
- Recommend changes based on community feedback

