

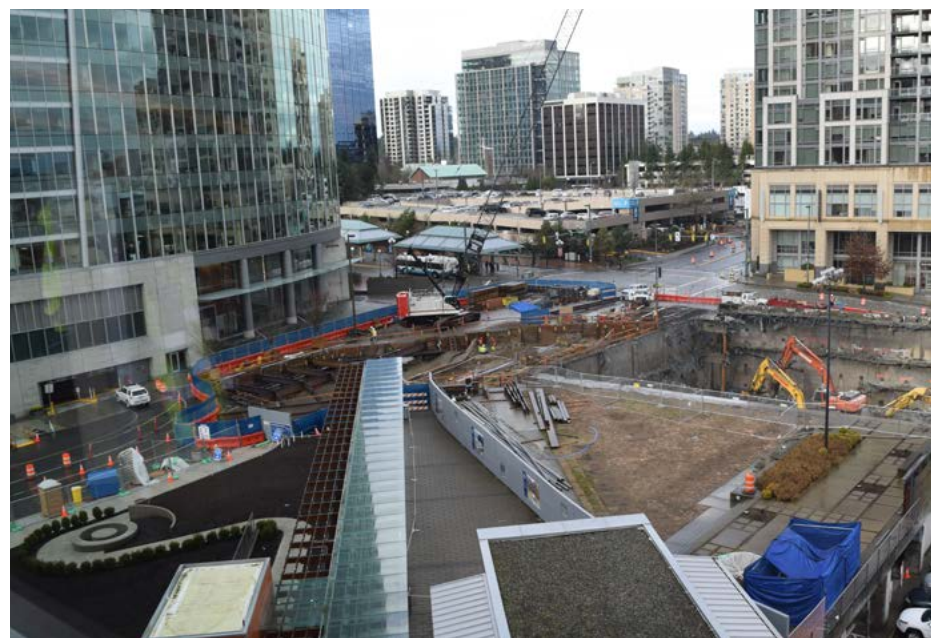


# East Link Light Rail Project Mitigation

In addition to applicable federal and state laws, to protect Bellevue neighborhoods, the City Council required Sound Transit to mitigate – or lessen – anticipated impacts from East Link. Mitigation was addressed not only in the planning and design of the light rail project within the city, but it was required once the project was under construction. Land use, design and permitting policies and codes were adopted to ensure the project meets city standards. These standards help to minimize impacts to the extent possible, to quality of life, the environment and traffic.

The above map features some of the key mitigation measures that lessen construction and operational noise, manage traffic during construction and preserve the environment.

For more about East Link light rail project mitigation, go to [bellevuewa.gov/ELMitigation](http://bellevuewa.gov/ELMitigation).



Construction of Bellevue Downtown Station at City Hall.



## Operational Noise Mitigation

Measures to reduce noise from the operation of the trains includes:

- **Acoustic panels:** Typically installed to the sections of aerial guideway.
- **Acoustic walls:** Typically installed away from the guideway (stand-alone structure).



Sample acoustic panel.

- **Quieter nighttime public address system:** Reduction in volume of speakers during nighttime hours.
- **Rail lubricators:** Typically applied to bends/curves in the tracks.
- **Wheel skirts:** Cover train wheels.

## Expanded Exempt Work Hours

[Expanded Exempt Work Hours](#) permits are issued by the city to allow for certain construction activities. These include, but are not limited to, evening hauling, construction which cannot occur during exempt hours (Mon.-Fri., 7 am – 6 pm; Sat. 9 am – 6 pm), site stabilization prior to winter weather, and emergency work. City inspectors monitor construction activities to ensure compliance with permit conditions.

### Approved Expanded Work Hours Permits

#### BelRed

- 124th Ave NE – 130th Ave NE to build elevated guideway over Kelsey Creek (24 months duration). Permit activated July 2017.

#### Central Bellevue

- NE 6th St to 116th Ave NE over I-405 to install long-span aerial guideway (24 months duration). Permit activated Dec. 2017.
- Across NE 8th St along BNSF railroad (Eastside Rail Corridor) to install long-span aerial guideway over NE 8th St (1-month duration). Permit activated fall 2018.
- Main St at 112th Ave SE; 110th Ave NE to NE 6th St to excavate tunnel (52 months duration). Permit activated Dec. 2015

#### South Bellevue

- East Channel Bridge to the south end of the South Bellevue station to build aerial guideway (39 months duration). Permit activated June 2017.
- North of the South Bellevue station to 112th Ave SE to build trench and aerial guideway (34 months duration). Permit activated June 2017
- 2700 Bellevue Way/light rail station site for girder installation (oversized load restrictions) (Jan. 2018-Jan. 2019 duration).

Permit details: [bellevuewa.gov/ELMitigation](http://bellevuewa.gov/ELMitigation)

To report concerns and/or violations, call Sound Transit:

- During business hours: 206-398-5465
- After business hours: 888-298-2395



Future site of the Spring District 120th Station.

## Maintenance of Traffic

Maintenance of Traffic (MOT) plans help to ensure proper traffic control in work zones. Work zone traffic control helps to reduce the risk of injury to workers within the zone and travelers using the impacted roadway. The city and Sound Transit have agreed to MOT plans for East Link construction occurring within Bellevue. Traffic control may be adjusted to enhance safety, respond to the need for certain activities, respond to emergency and/or emerging conditions and manage traffic flow. The city reviews and approves permits for the use of its right-of-way (e.g. roadway) and inspectors monitor compliance.

### Approved Maintenance of Traffic Plans

**BelRed MOT:** Maintain business access; prohibit simultaneous road closures; require bicycle/pedestrian detours; approve one-way traffic provision on 136th Place NE.

**Central Bellevue MOT:** Allow extended closures on portion of 110th Ave NE and intermittent nighttime closures of 112th Ave NE, 116th Ave NE and NE 8th Street.

**South Bellevue MOT:** On 112th Ave SE, maintain one lane of traffic in each direction and require full restoration of roadway. On Bellevue Way SE, maintain two lanes of traffic in peak direction during peak commute time, allow intermittent weekend closures; limit overall duration of lane closures.

*Construction activities cannot occur with the city's right-of-way without an approved permit to do so.*

### Tree Replacement; Critical Area Preservation

City permit conditions seek to preserve trees and vegetation to the extent possible. Conditions are identified in the light rail [Design and Mitigation Permits](#) issued by the city for the BelRed, Central Bellevue and South Bellevue segments, as well as the Spring District/120th Station.

Wetland mitigation involves actions taken to avoid, minimize or prevent adverse impacts to a wetland which is a sensitive area because of wildlife and aquatic habitat. Wetland mitigation is occurring at Kelsey Creek, Kelsey Tributary and Mercer Slough Nature Park.

### Tunnel Excavation

A key mitigation measure is the method in which the downtown tunnel is being built. This method is called "sequential excavation" and involves removing soil in small sections with an excavator and cutting equipment, rather than by a boring machine. Tunneling is not occurring on surface streets, less soil is being removed from the ground (and therefore less dust impacts), and there is less noise and vibration than the "cut-and-cover" method.



Tunnel excavation is occurring under 110th Ave. NE.



## Transportation

### For more information

Marie Jensen

East Link Outreach | Bellevue Transportation Department

425-452-2064 | [mjensen@bellevuewa.gov](mailto:mjensen@bellevuewa.gov)

[bellevuewa.gov/ELMitigation](http://bellevuewa.gov/ELMitigation)