



Parks & Community Services Board

July 11, 2023

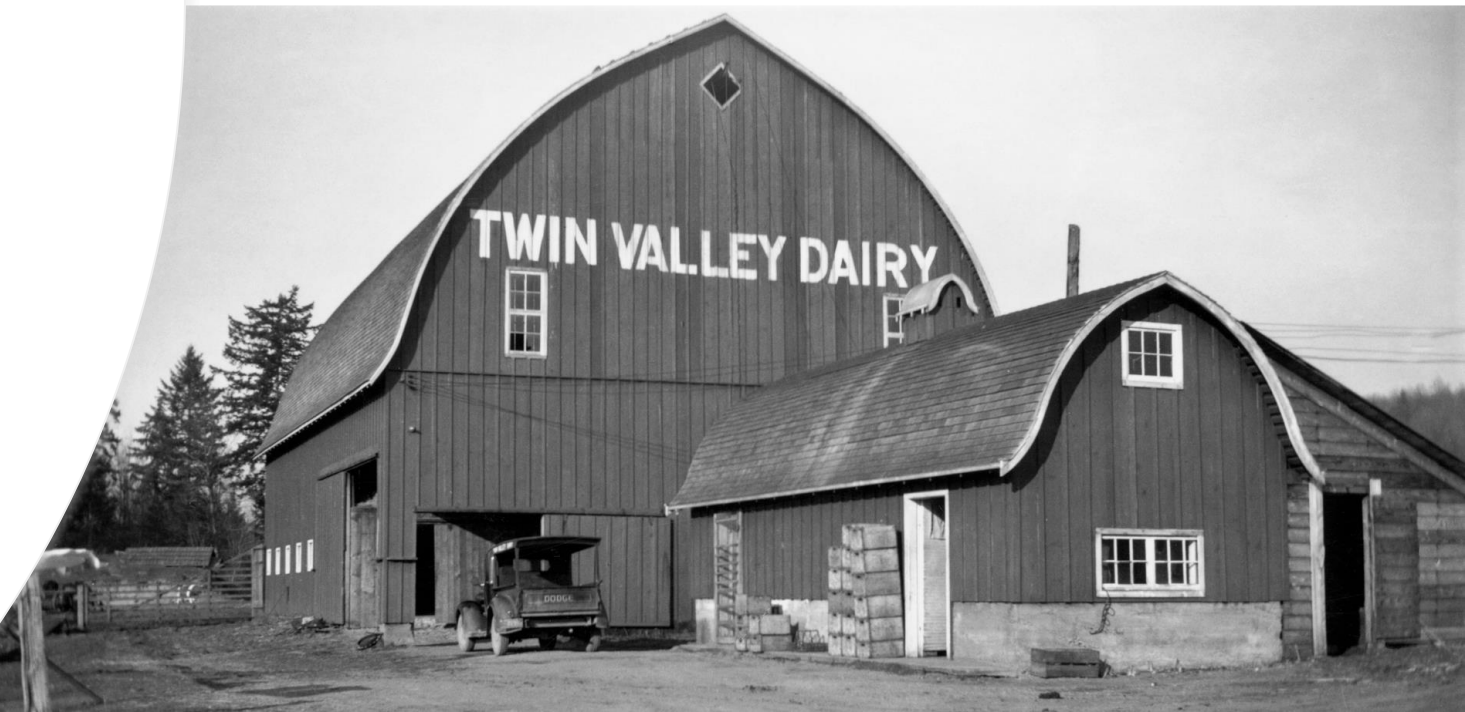
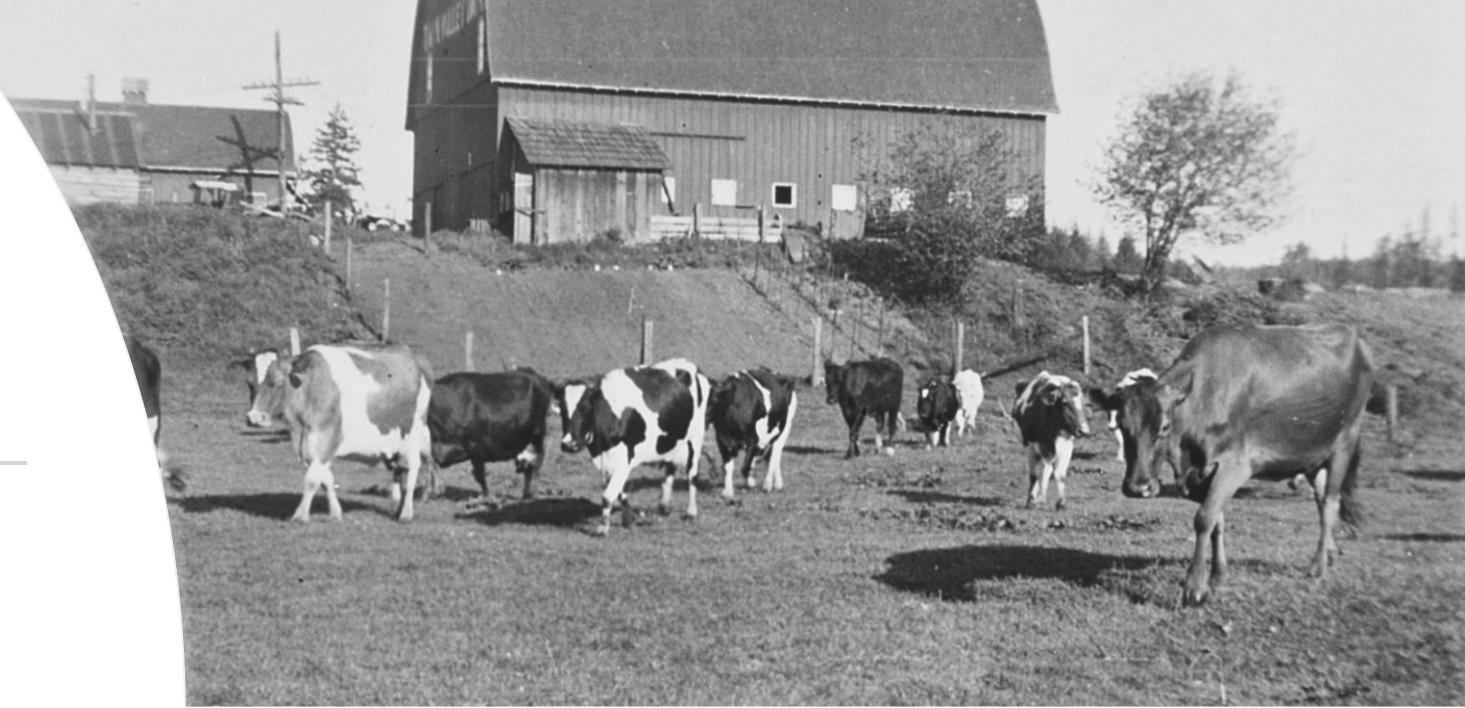
Mission Statement

To preserve and interpret this historic farm and its natural resources through a variety of programs and experiences that maximize the full potential of the site. To provide agricultural, educational, recreational, and community-building opportunities to a diverse population. To share the site's small family farm atmosphere by creating space for visitors to connect with nature, the animals, our land, and each other.

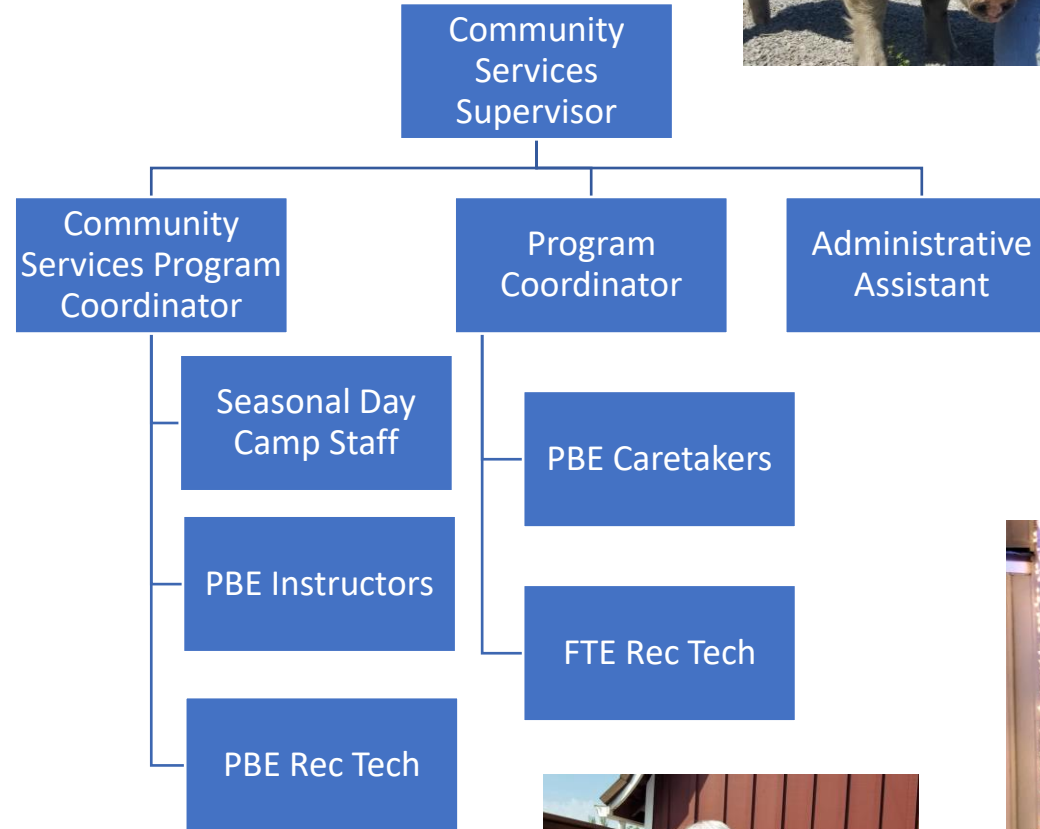


History of Kelsey Creek Farm

- Historic dairy that delivered milk, cream, and butter to residents of central and western Bellevue from the 1920s – 1940s.
- Bought by City of Bellevue in 1968.
- Opened as Kelsey Creek Farm Park in 1972.



Organizational Structure



Park and Facility Highlights

- 150-acre park in the Wilburton neighborhood
- Three historic barns, two are on the Washington State Historic Register
- 3 Classrooms / meeting rooms
- Farm animals
- Fields and playground
- Trails



Programs & Activities

- Day Camps
 - Kelsey Creek Day Camp
 - Kids Connection Day Camp
 - Go Go with Van Gogh Art Camp
 - Farm Discoveries Day Camp
 - Farm Adventurers Camp
 - Cartooniversity Day Camp
 - Robinswood Day Camp



Programs & Activities

- Year-Round Programs
 - Little Farmers
 - Farm Explorers
 - Little Scientists
 - Science Explorers
 - Weekend workshops
 - School break camps
- Volunteer Programs
 - Summer Teen Farm Volunteers
 - After School Teen Volunteers
 - Weekend Teen Farm Volunteers
 - Adult Farm Volunteers
 - Special Event Volunteers
 - Counselor in Training Volunteers



Programs & Activities & Site Use

- Birthday Parties
- School Group Tours
- Facility Rentals
 - Indoor & Outdoor
 - Cross country meets
- Picnic Shelter Rentals
- Passive Recreation





Partners/Contractors & Sponsors/Supporters/Grants



Partners/Contractors

- WSU Extension 4-H
- Green Apple Alpacas
- Bee keepers and Honey sales
- Northwest Vintage Iron Tractor Club
- Northwest Regional Spinner and Fiber Arts Association
- Contracted instructors

Sponsors/Supporters/Grants

- Amazon
- NEP
- Animal Sponsorship
- SEEK – Summer Experience & Enrichment for Kids



Pollinator Project

- Funded by NEP and Amazon grant
- One of a kind observation hive





Diversity, Equity, Inclusion & Grants

Diversity

- Parks & Community Services Strategic Plan
- Ongoing trainings as required by City of Bellevue and those of interest to staff
- Farming Around the World class

Inclusion

- Free programs – free to walk around and enjoy farm animals, special events, Stitch Circle



Special Events

Sheep Shearing – Last Saturday in April

- 5,000 participants
- 29 years

Farm Fair – First Saturday in October

- 4,500 participants
- 40 years

Trick or Treat with the Farm Animals – Last Saturday in October

- 100 participants
- 2 years

Barn Lighting – First Saturday in December

- 300 participants
- 3 years



Response to COVID Pandemic

- Pivot to mail-out programs
 - Farm Animal Pen Pal Program
- Popular place for families to get out and recreate safely outdoors
- Controlled re-opening
 - In compliance with Governors ever changing guidelines
 - Signage, masking, vaccination verification, facility flow, etc.
 - Smaller group sizes than recommended
- Program growth



Future Plans & Renovations

Programs, Activities, & Events

- Continue growing Trick or Treat with the Farm Animals and Barn Lighting events
- Promote scholarship program
- Expand historical signage
- Seek sponsors for events

Renovation Projects

- Front pasture fence replacement – summer 2023
- Hog house renovation – spring 2023
- Overhang on south side of Education Barn – spring 2023



Social Media

- Follow us!
- Kelsey Creek Farm currently has 442 followers on Facebook and 2,092 subscribers on the webpage
- Post at least 3 times/week
- Would like to expand to other media to capture a younger audience



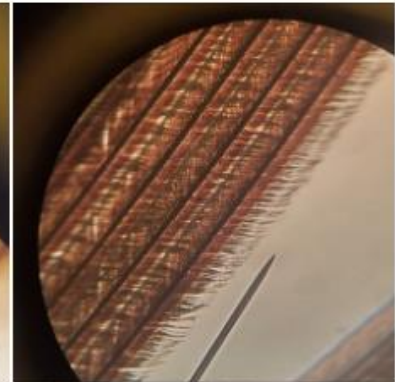
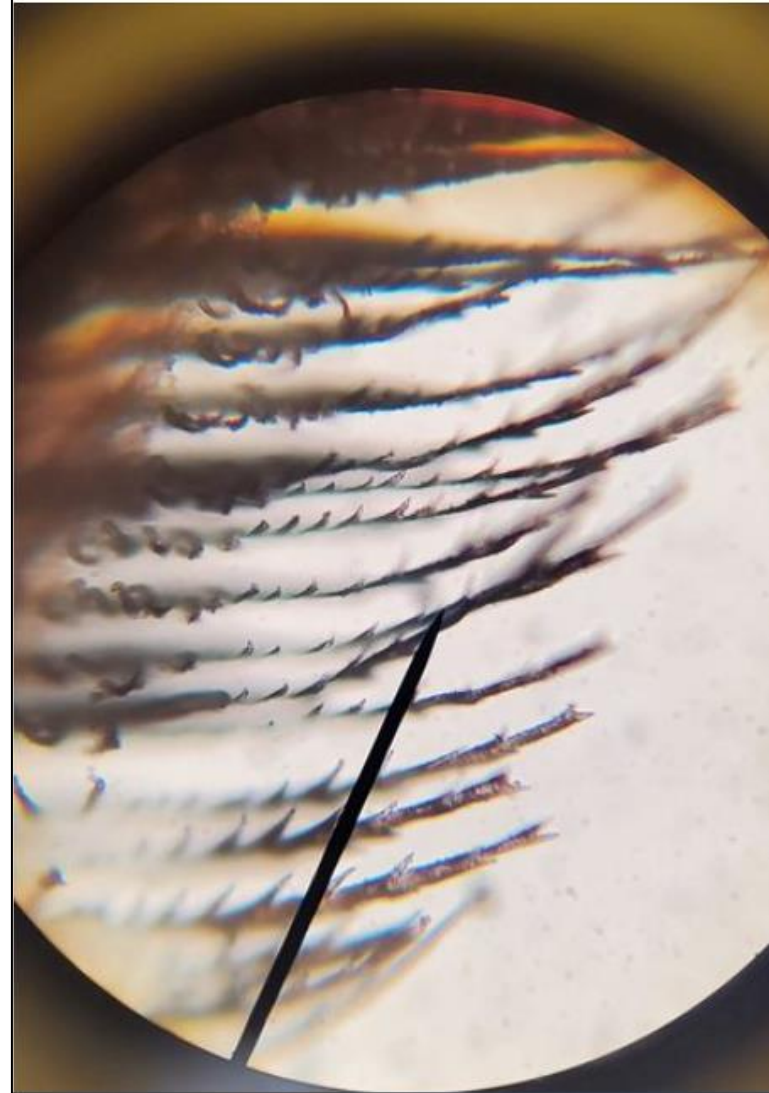
Kelsey Creek Farm

Published by Stacy Stenslie · January 28 ·

[#FarmScienceSaturday](#)

At Kelsey Creek, we have a few chickens called silkies. You can tell them apart from the others by their fluffy, disorderly feathers, their extra toe, and blue earlobes.

Silky feathers lack barbicels, which are a feature of most types of feathers. They're what result in the uniform articulation of a feather vane, hooking barbs together in a line. These pictures are a non-silkie flight feather under a microscope. Under higher magnification, the indicator... See more





Questions?