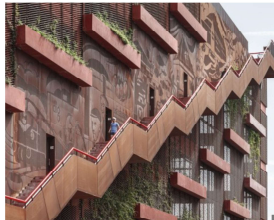
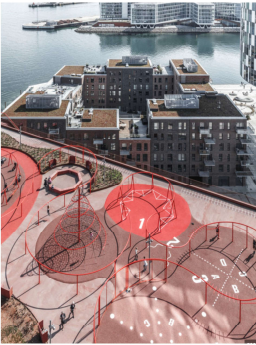


WORKac's garage façade transforms the simple and often frustrating act of parking a car into an unexpected opportunity for social interaction. With just four feet of depth, the façade packs in a vertical series of public spaces, including a gallery for graffiti art, a children's play area with a slide and climbing wall, a garden with a single palm tree, a DJ platform on top of the egress stairs, a lending library, listening lounge, fountain, bar, car washer/charger, and space for pets.

At the roof level, a few parking spaces are removed to accommodate a small auditorium and beach space. A reservoir collects runoff from the roof to irrigate the garden. The public spaces and connecting staircases are expressed on the façade as a series of mesh-screened tunnels, like an ant farm of urban activity presented to the street below.



Andres Villaveces NCARB AIA CPHC
Design Director | **MÉTRICA** Architects

[web](#) | [instagram](#) | [phius](#)