



City of Bellevue

Off-Leash Dog Area

Pilot Pop-up Program Recommendations

Parks & Community Services Board

April 17, 2024



AGENDA



Pop-up Pilot Program Overview



Community Feedback



Recommendations



Site Improvements and Next Steps

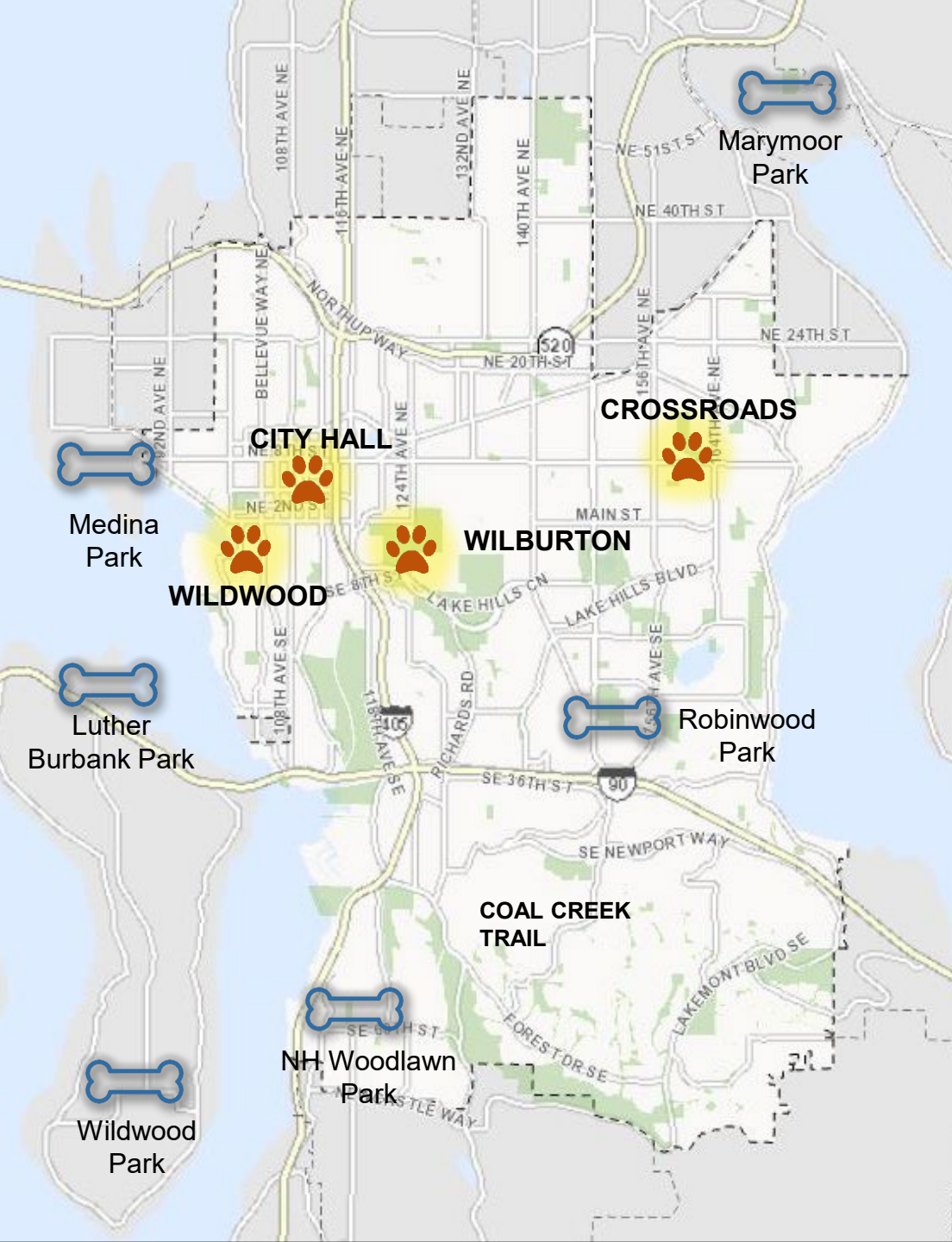


Park Board Feedback



Information

Parks & Community Services Board Feedback



Site Selection Criteria

- Complements existing visual park character.
- Will not displace existing park recreational uses.
- Compatible with existing park and adjacent property uses
- Community feedback.
- Provide generous residential buffers.
- Accessibility - sufficient parking, transit/bus, and ADA accessible.
- Sensitive environmental concerns (slopes, wetlands etc.)
- Geographically dispersed and proximate to dogs and their people
- High visibility into an OLA site is desirable.
- Maintenance access and servicing, including regular removal of dog waste and garbage collection.

Community Outreach

Welcome! Te damos la bienvenida 歡迎使用
환영합니다 欢迎 Добро пожаловать
Chào Mừng

"Pop-up" Dog Off-Leash Area: Please share your feedback by taking this short survey at: BellevueWA.gov/dogs

Khu vực thả dây dắt chó "Dừng Thanh Chấn Nhanh": Vui lòng chia sẻ phản hồi của quý vị bằng cách tham gia cuộc khảo sát ngắn này trên trang web của chúng tôi tại địa chỉ BellevueWA.gov/dogs

"快閃式" 不栓繩遛狗區: 請訪問我們的網站 BellevueWA.gov/dogs 參與簡短調查, 分享您的反饋意見。

「臨時」狗狗 免繫繩區 請至 BellevueWA.gov/dogs 填寫簡短調查, 與我們分享您的反饋意見。

"판연" 반려견에서 간단한

Área "emergencia" comento BellevueWA.gov/dogs
«Всплывающий» разделитесь опросе на на

For More Information Visit: BellevueWA.gov/dogs
Để biết thêm thông tin truy cập



Bellevue Parks & Community Services is excited to launch a new "Pop-up" Dog Off-Leash Pilot Program in response to growing demand for accessible, safe spaces for pets and their owners to get exercise and enjoy the outdoors.
Fenced off-leash facilities will "Pop-Up" in parks and other city-owned properties to provide off-leash dog facilities on a temporary basis.
Bellevue Parks & Community Services Dịch Vụ Công Viên & Công Viên Bellevue rất vui mừng được triển khai Chương Trình Thử Nghiệm Thả Dây Dắt Chó "Dừng Thanh Chấn Nhanh" một lần nữa để đáp ứng nhu cầu ngày càng tăng về không gian an toàn để tập dượt và vui chơi của chúng ta để tập dượt cùng nhau hưởng hoạt động ngoài trời.
Các cơ sở thả dây dắt chó tạm thời sẽ "Dừng Thanh Chấn Nhanh" trong các công viên và các địa điểm khác thuộc sở hữu của thành phố để

Thank you for observing leash laws!

Please visit our New Pop-up Dog Off-Leash Facilities at:

- Crossroads Park, 999 164th Ave. NE: one-acre area in this 35-acre park.



12400 Main St.:
along the Lake to Lake trail, with excellent
and neighborhood walkers.

60 101st Ave. SE:
access, but limited parking.



and what doesn't via the survey

departments/parks/dogs-bellevue-parks



정보 Information 情報
Information 1 معلومات
425-452-6800 425-452-6800

Dogs in Bellevue Parks

English 日本語 한국어 中文 繁體中文 越語 ភាសាខ្មែរ ភាសាសិង្ហបុរី ភាសាម៉ាឡេ ភាសាបង់ក្លា

Park Guidelines

- Geocaching in Parks
- Parks & Recreation Code
- Wandering Where to Fly Your Drone?
- Dogs in Bellevue Parks

Dogs and their humans are welcome in all Bellevue Parks and trails while on leash with only a few exceptions: dogs are prohibited at beach parks during the swimming season, synthetic turf areas (such as Inspiration Playground), the Botanical Garden, Bannerwood Stadium and Kelsey Creek Farm. Service animals are always welcome while providing assistance to their human partner.

- Parks with Off-Leash Dog Areas
- New "Pop-up" Dog Off-Leash Pilot Program
- Report Dogs Off-Leash

Parks with Off-Leash Dog Areas



Neighborhood News

August 2023

Well-Known Uses, Note Patrick J. Kiger and Sari Harrar of American Association of Retired Persons (AARP). "Scammers are like viruses: they continually evolve in response to the latest news and trends, using them for new ways to separate us from our cash."

ON AGING

Scammers "are so adaptable, they're going to just follow the headlines," wrote Amy Nofziger, AARP's director of Fraud Victim Support. Scammers have given new twists to the romance scam and the Ponzi scheme to make them more convincing and effective.

And like the rest of society,

Bellevue tests pop-up dog areas

Recognizing the growing need for accessible and safe spaces for pets and their owners to get exercise and enjoy the outdoors, Bellevue Parks & Community Services is launching a new pop-up, off-leash dog area pilot program this summer at three parks across the city.

These temporary facilities, with fenced areas, double entry gates, garbage cans and dog waste bag dispensers,



BELLEVUE IT'S YOUR CITY



Griffith waits impatiently for his friend Donut to join him in the pop-up off-leash area at Wildwood Park. All of the new off-leash areas feature double gates and fences.

Bellevue tests pop-up off-leash dog areas

LAURE JOSSO
our City Editor

Recognizing the growing demand for accessible and safe spaces for pets and their owners to get exercise and enjoy the outdoors, Bellevue Parks & Community Services is launching a new pop-up, off-leash dog area pilot program this summer at three parks across the city.

Temporary facilities – fenced areas with double entry gates, garbage cans and dog waste bag dispensers – are being tested at three parks. The pilot progresses, temporary sites may be added based on community feedback, and other factors. More pop-up sites may be added based on community feedback, and other factors. More pop-up sites may be added based on community feedback, and other factors. More pop-up sites may be added based on community feedback, and other factors.

Permanent sites may then have features added such as water fountains, shelters, dog wash and surface improvements. Funding from the new parks levy will support the development of these new facilities.

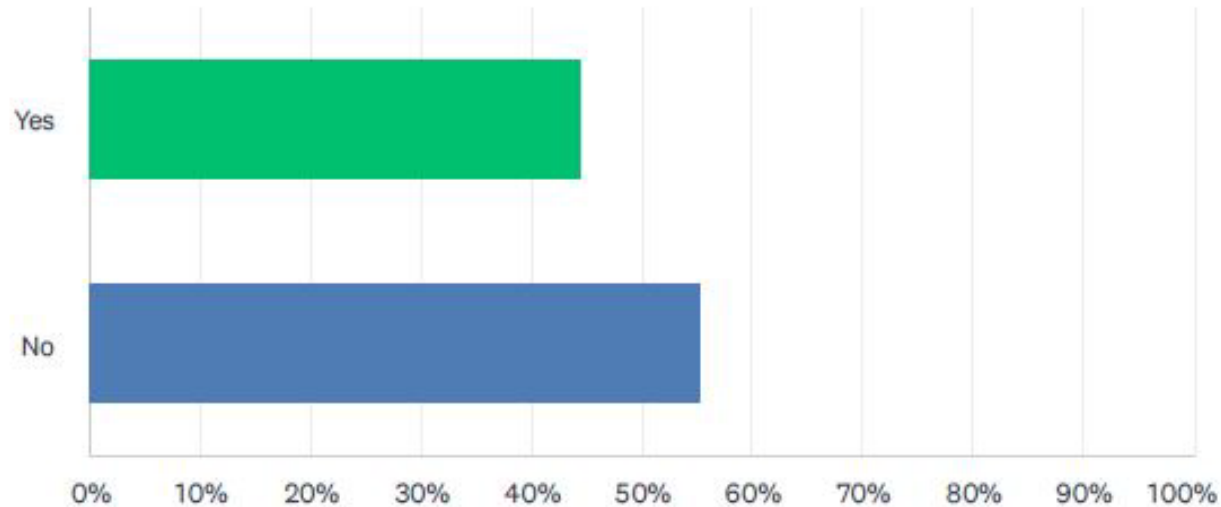
The pop-up locations were chosen based on the 2022 Parks & Open Space System Plan, which prioritized siting off-leash areas facilities near downtown and in other areas.



Community Feedback

Q2 Do you have access to a backyard or other area your dog can go off-leash?

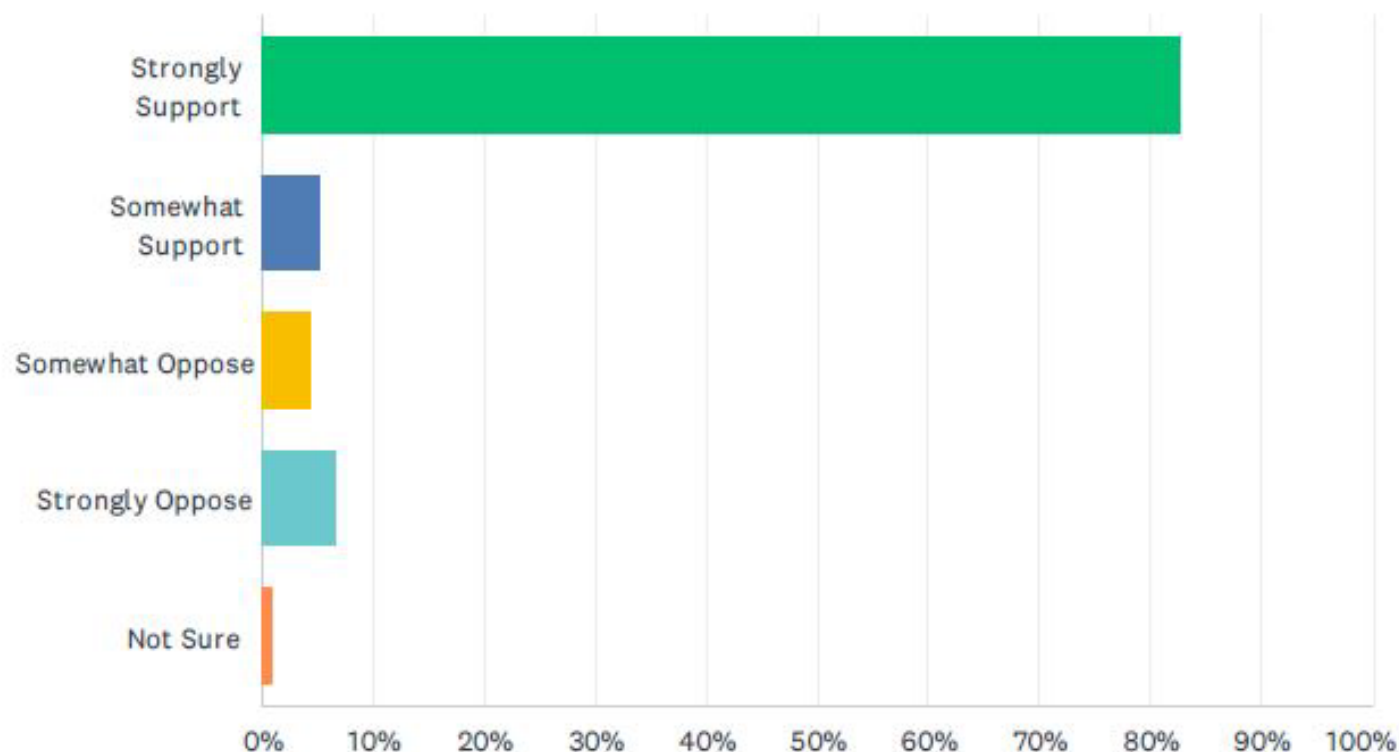
Answered: 707 Skipped: 187



Community Feedback

Q6 Do you support expansion of off-leash facilities throughout Bellevue's park and open space system?

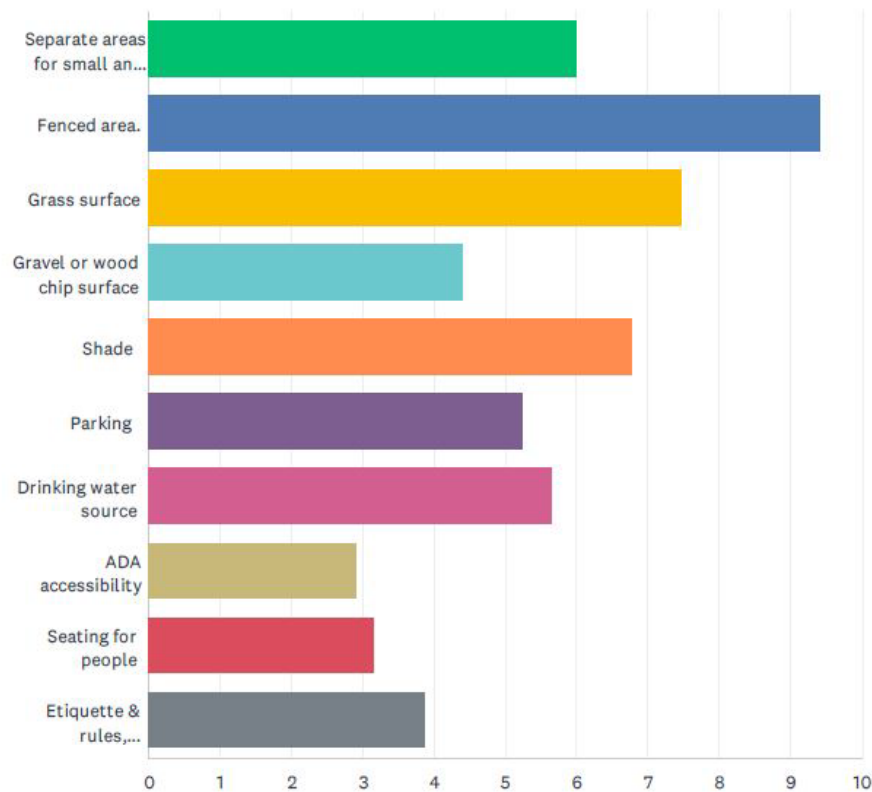
Answered: 746 Skipped: 148



Community Feedback

Q4 What amenities do you think are most important for an off-leash area?
Please sort this list in ranked order of importance.

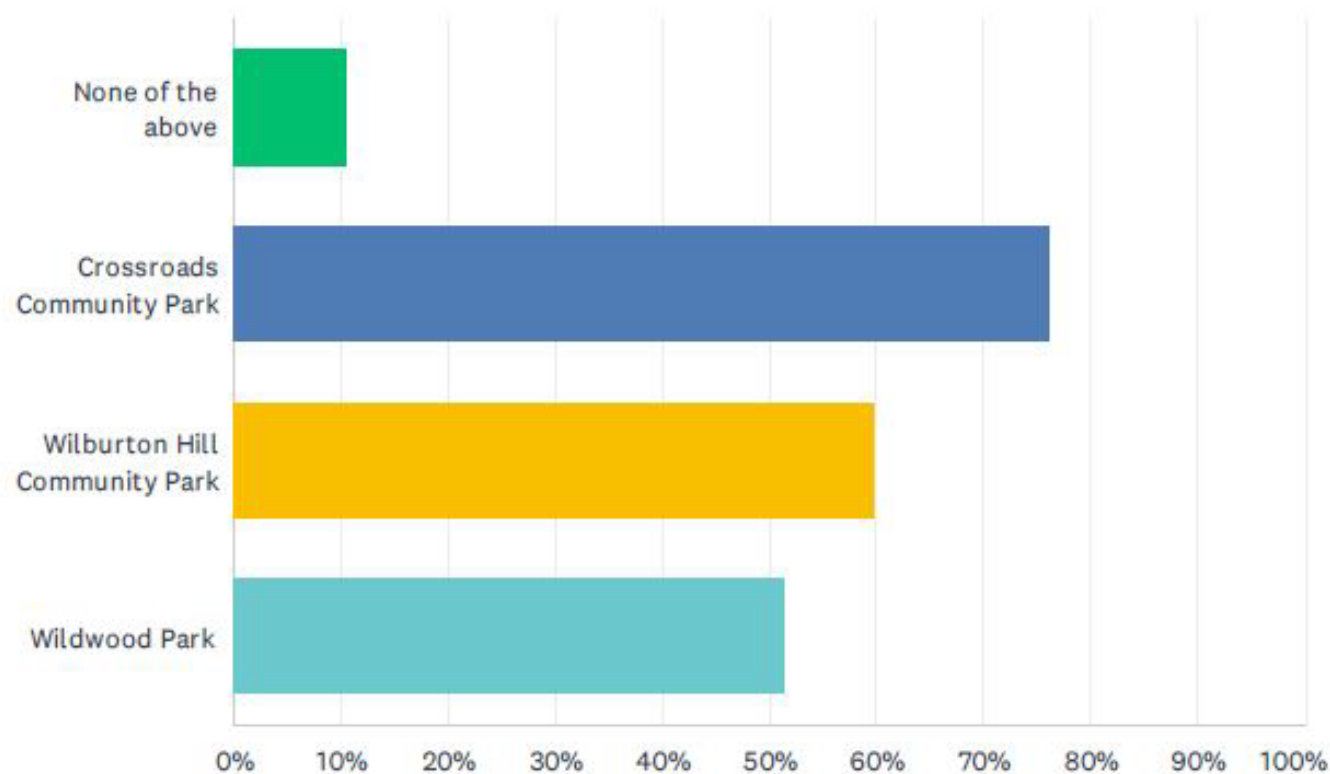
Answered: 706 Skipped: 188



Community Feedback

Q10 I support temporary off-leash facilities becoming permanent at? (Mark all that apply)

Answered: 742 Skipped: 152



Crossroads Cmmtty Pk

35 Ac Park / 1.0 Ac OLA

Dog Off-Leash Area

- Permanent
- Fenceline Adjustment
- Water/Wash Station
- Shelter/Benches
- Small/Shy Area

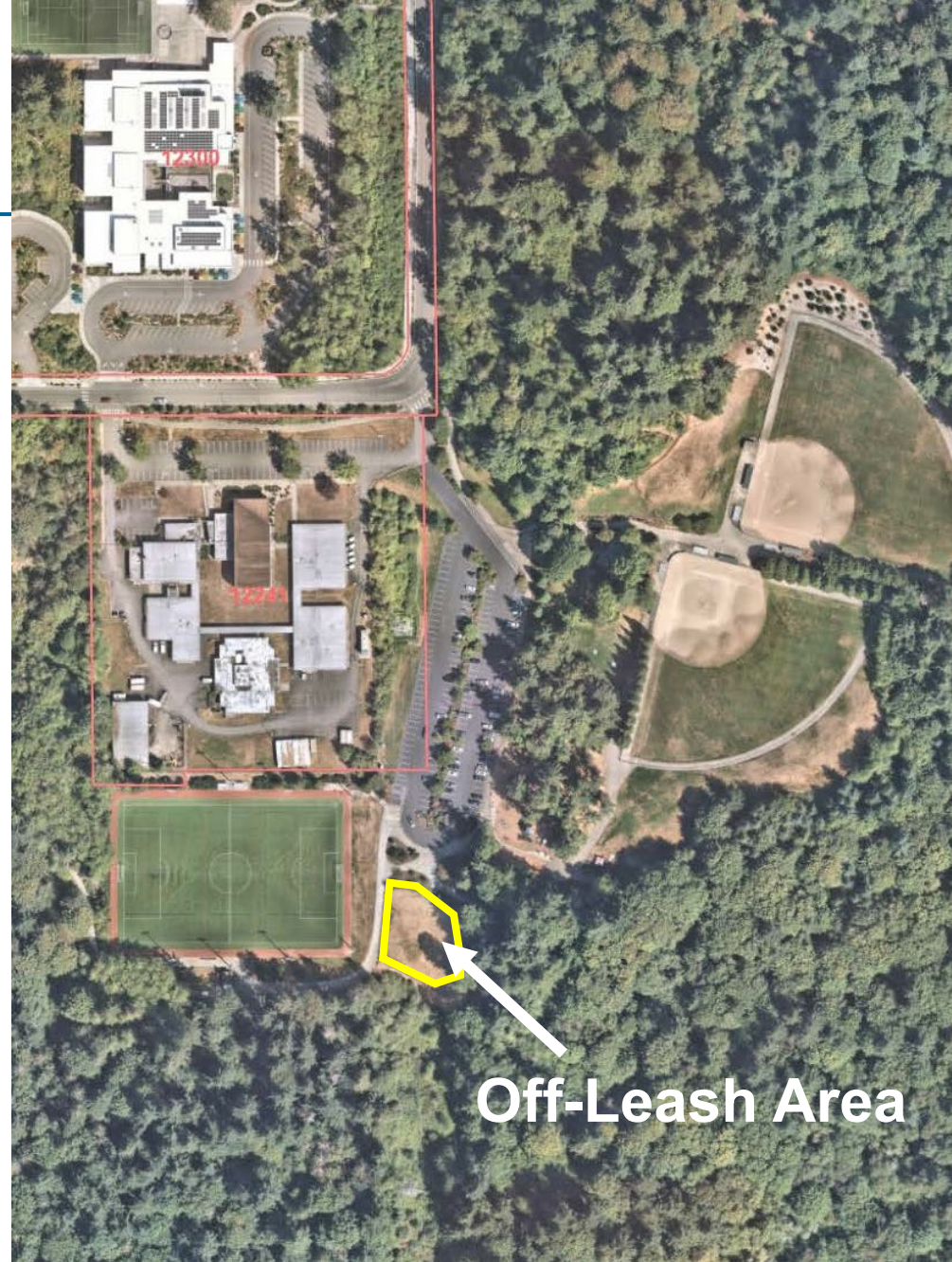


Wilburton Hill Park

123 Ac Park / .25 Ac OLA

Dog Off-Leash Area

- Permanent
- Fenceline Adjustment
- Water/Wash Station
- Shelter/Benches



Wildwood Park

2.5 Ac Park / .25 Ac OLA

Dog Off-Leash Area

- Permanent
- Fenceline Adjustment



City Hall Adjacent

0.8 Ac / 0.5 Ac OLA

Dog Off-Leash Area

- Temporary facility





Pop-Up Dog Off-Leash Area Pilot Program

Questions and Comments?