

Boundary Line Adjustments

Lacey Jane Wolfe
City Manager's Office
September 9, 2025



Action

1. Move to adopt Resolution 10534 (King County Parcel – South Kirkland Park and Ride)
2. Move to adopt Resolution 10535 (City of Kirkland Parcel – Cross Kirkland Corridor)
3. Move to adopt Resolution 10536 (Intersection Parcel – NE 38th Place and 108th Avenue NE)



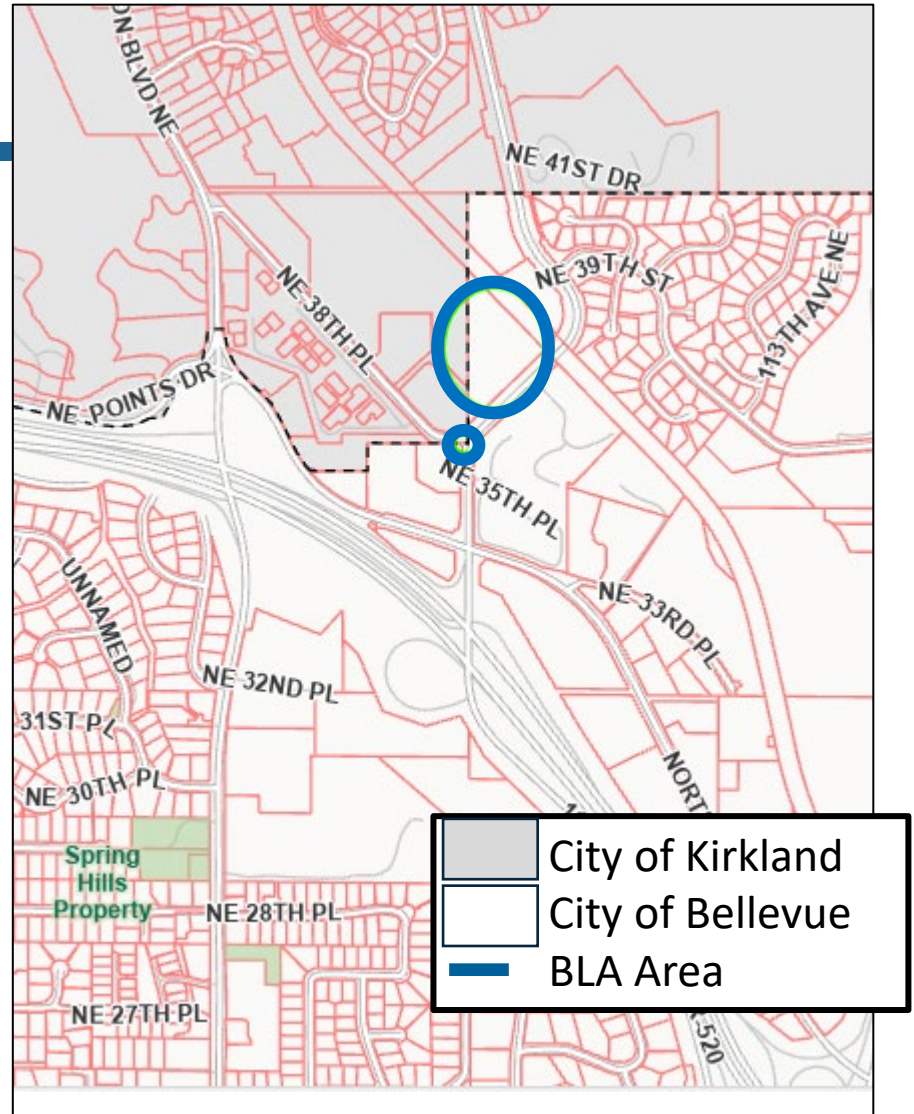
Agenda

1. Introduction
2. King County Parcel – South Kirkland Park and Ride
3. City of Kirkland Parcel – Cross Kirkland Corridor
4. Intersection Parcel – NE 38th Place and 108th Avenue NE



Introduction

- Three Boundary Line Adjustments (BLAs)
- Streamline development, make maintenance more efficient
- No loss of population or tax revenue
- Kirkland City Council approved on July 15



Action #1

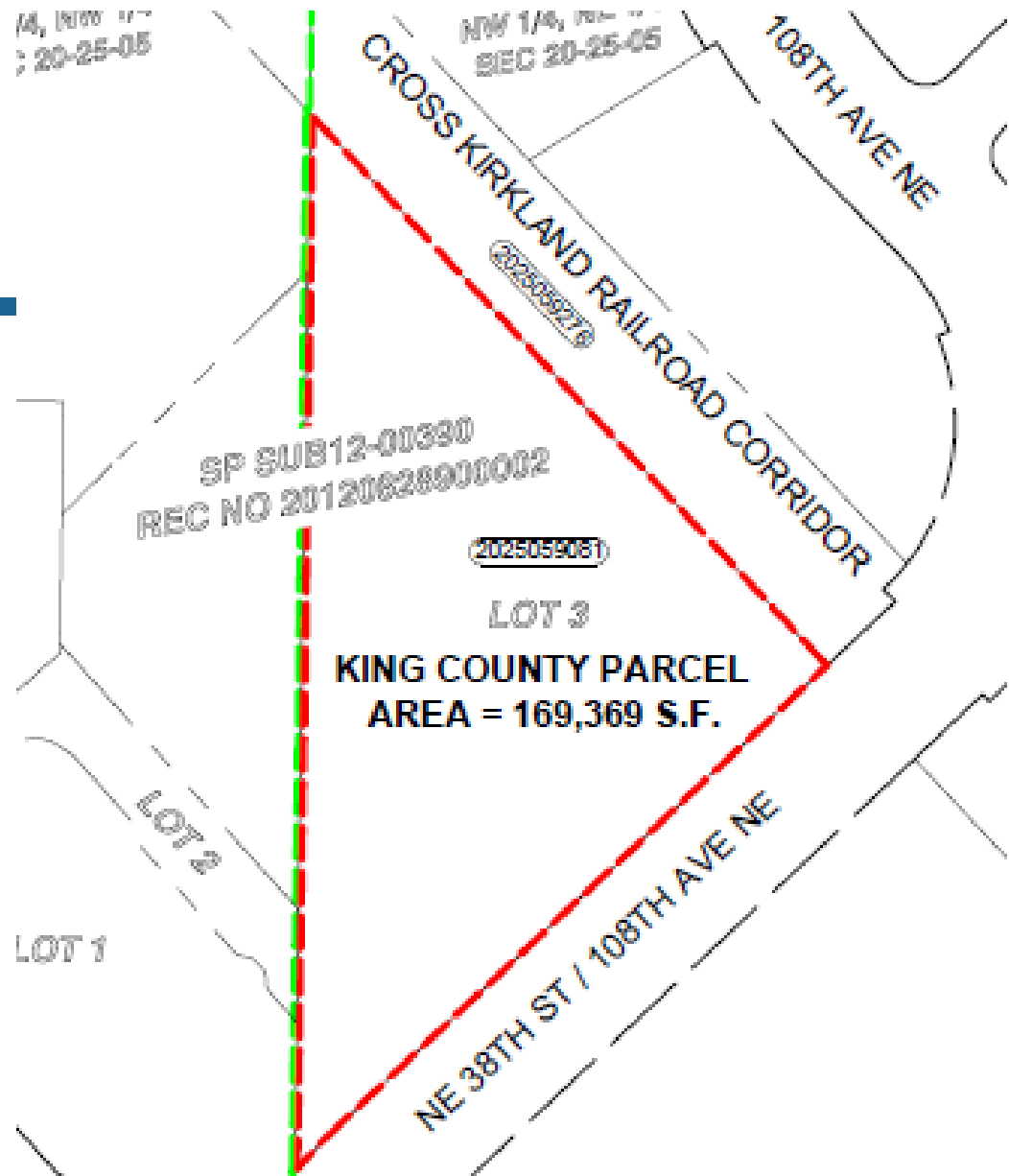
King County Parcel

South Kirkland Park and Ride
(SKPR)



King County Parcel

- A portion of South Kirkland Park and Ride is in Bellevue – in red
- Parcel owned by King County
- Resolution 10534 adjusts boundary so entire South Kirkland Park and Ride parcel is in Kirkland



King County Parcel

- Goal is to streamline permitting process for future light rail station
- Interagency agreement allows Bellevue to provide input regarding future development of site



Action #2

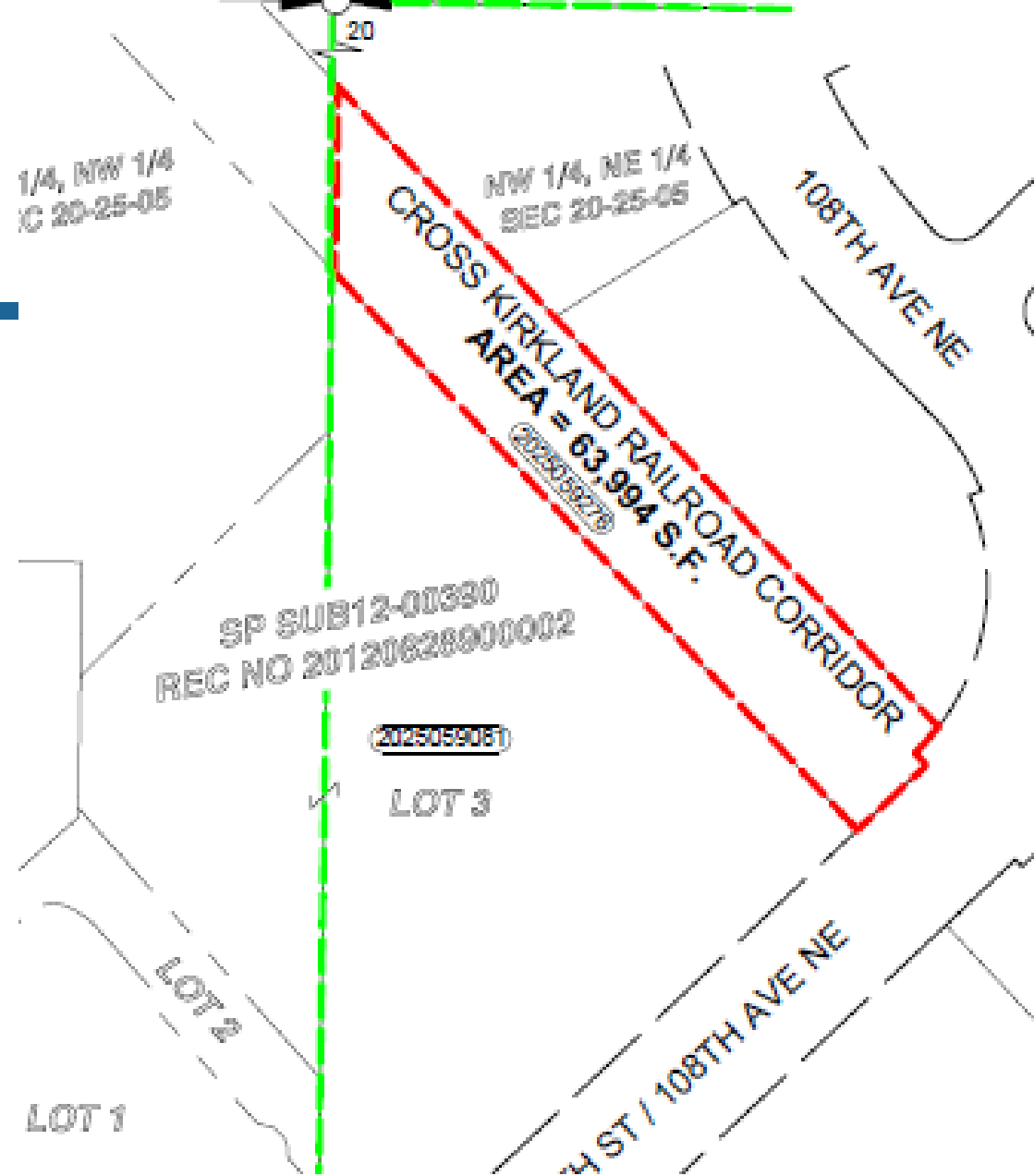
City of Kirkland Parcel

Cross Kirkland Corridor (CKC)



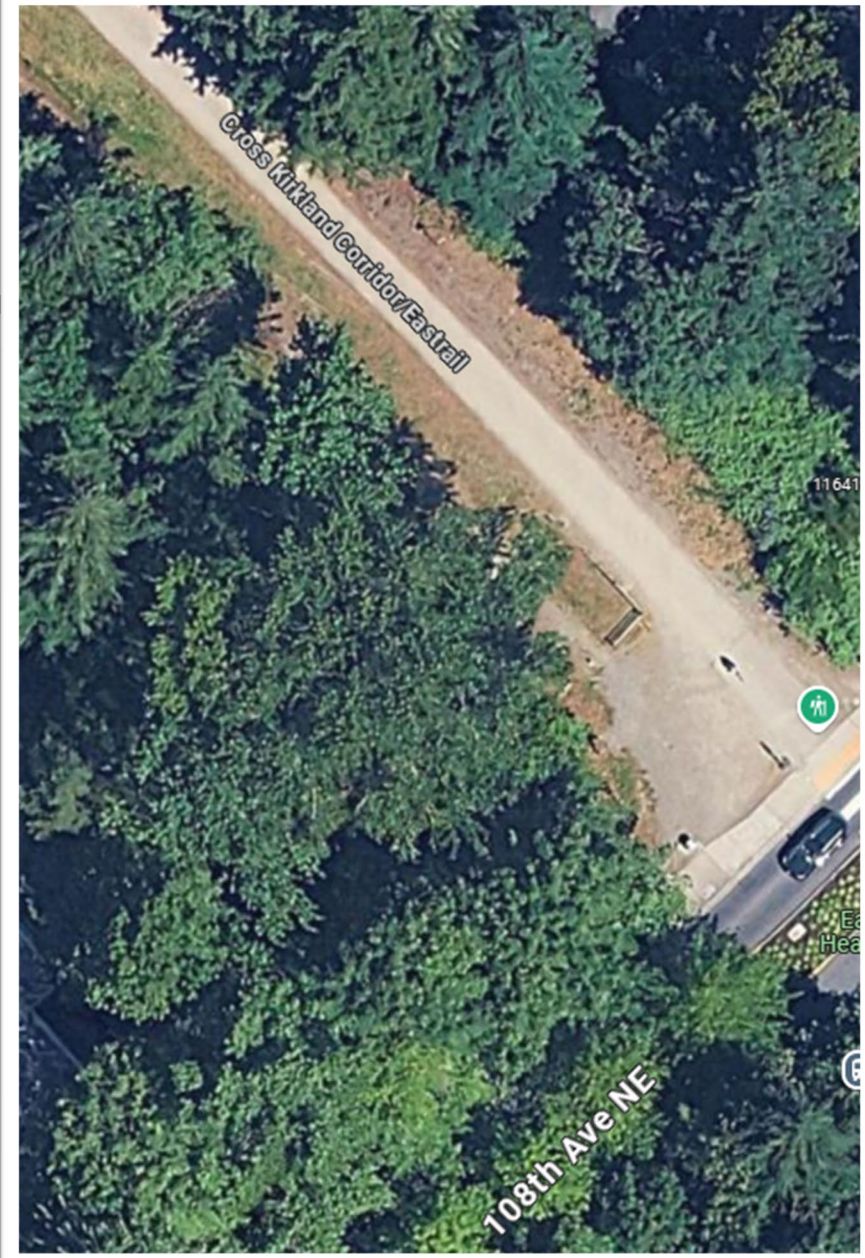
City of Kirkland Parcel - CKC

- A portion of the Cross Kirkland Corridor is in Bellevue
- Resolution 10535 adjusts boundary so entire Cross Kirkland Corridor parcel is in Kirkland



City of Kirkland Parcel - CKC

- Goal is to streamline permit processes for future trail development
- Interagency agreement allows role in permitting decisions related to development of the South Kirkland Park and Ride



Action #3

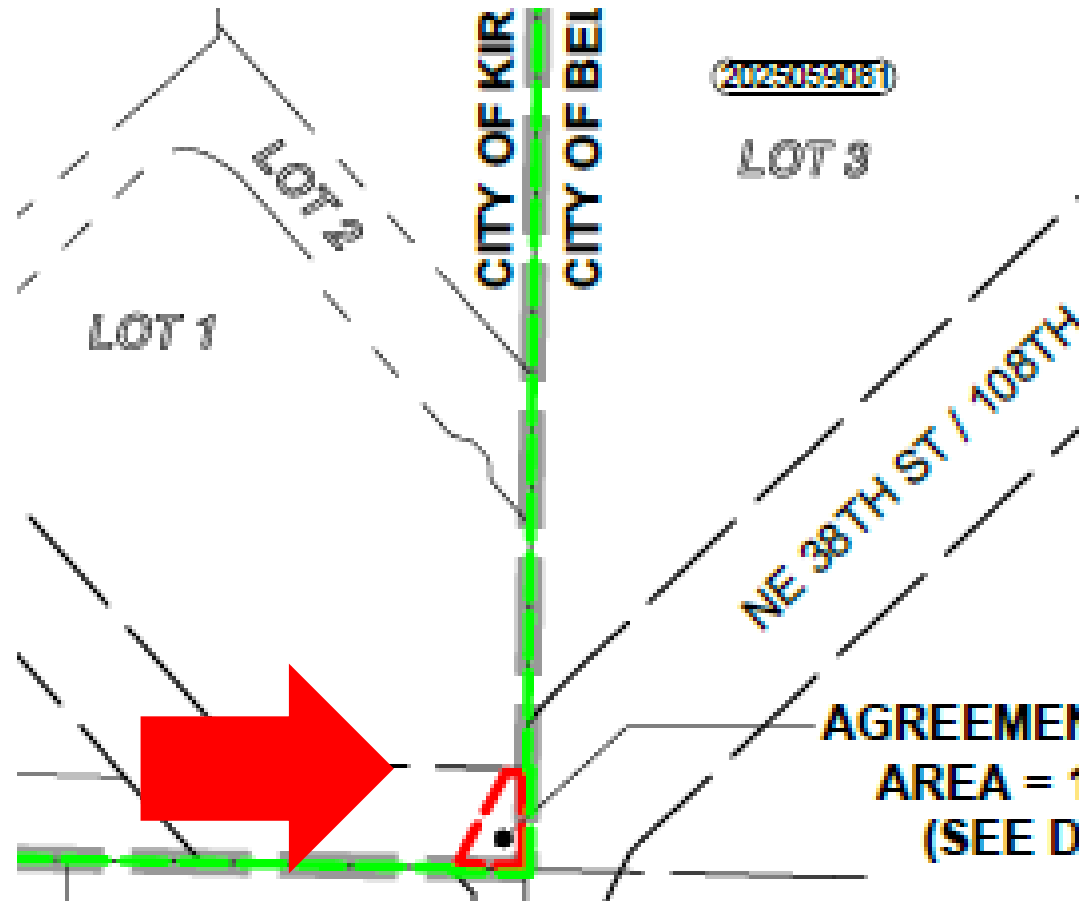
Intersection Parcel

NE 38th Place and 108th Avenue NE



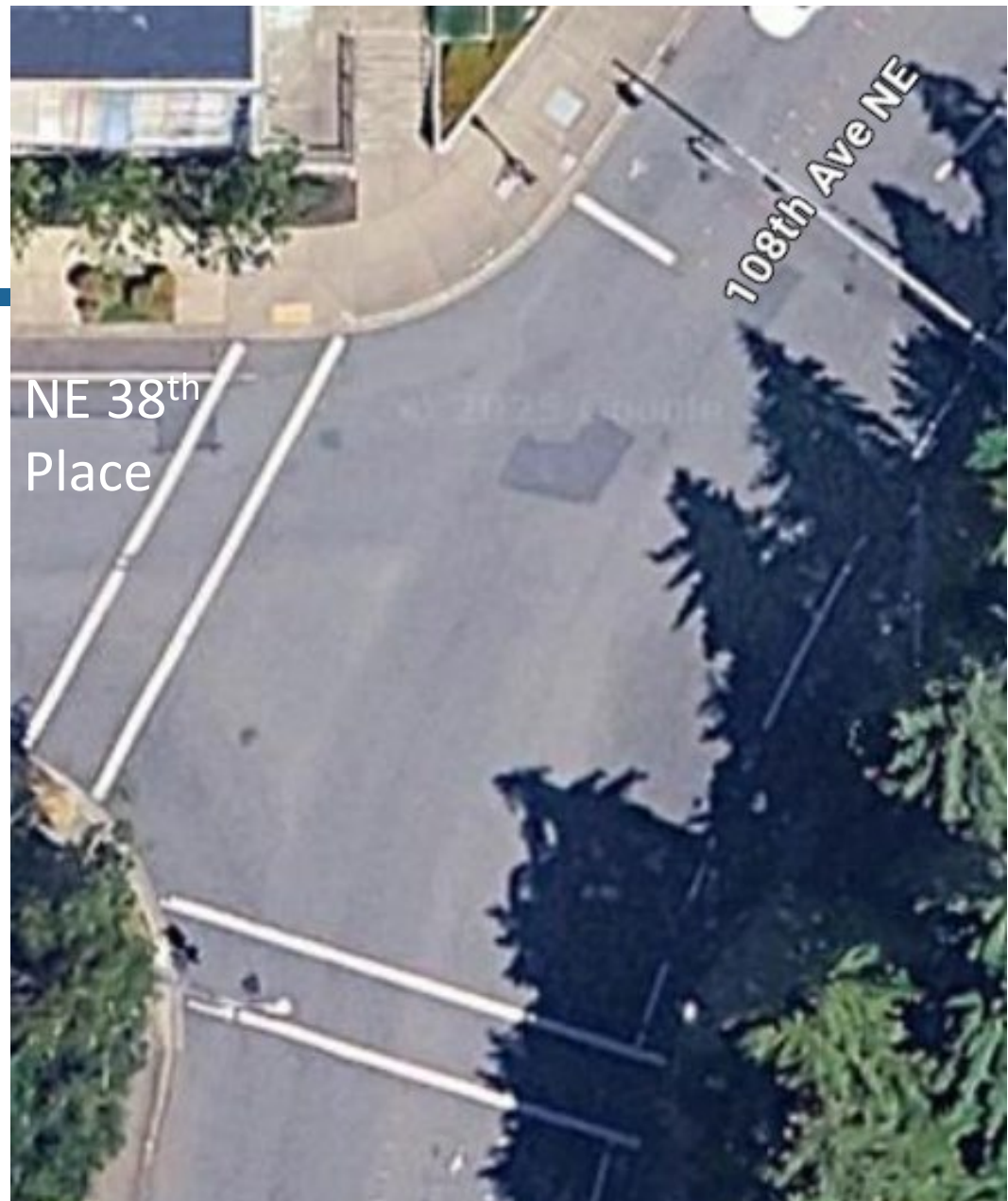
Intersection Parcel

- A portion of the intersection of NE 38th Place and 108th Avenue NE is in Kirkland
- Resolution 10536 adjusts boundary so the entirety of 108th Avenue NE is in Bellevue



Intersection Parcel

- Goal is to allow Bellevue to make more efficient repairs to 108th Avenue NE and the traffic controls at the intersection

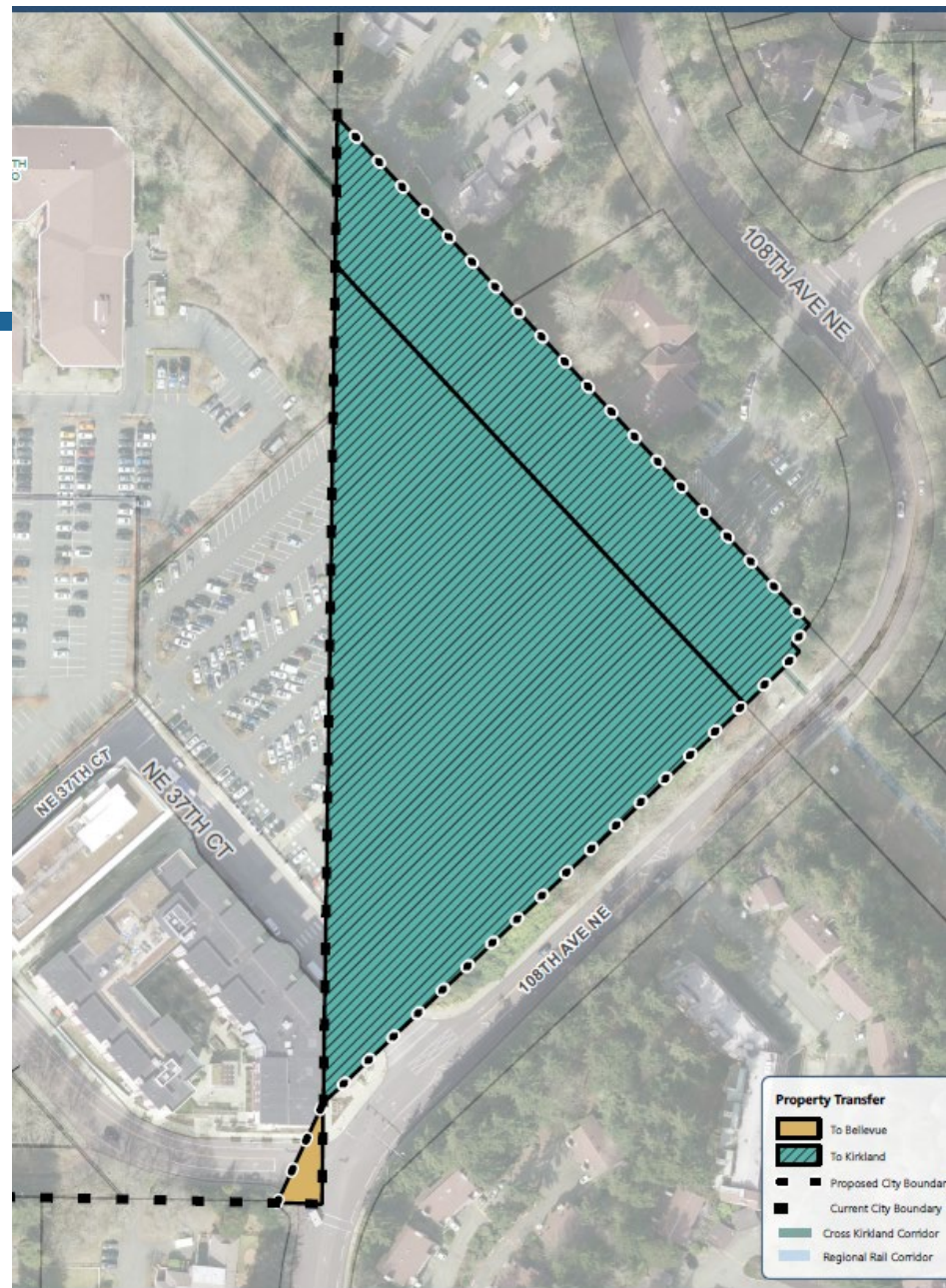


In Summary

If all adjustments are approved, the Bellevue-Kirkland municipal boundary line will be modified as shown.

Teal – Kirkland receives

Yellow – Bellevue receives



Action

1. Move to adopt Resolution 10534 (King County Parcel – South Kirkland Park and Ride)
2. Move to adopt Resolution 10535 (City of Kirkland Parcel – Cross Kirkland Corridor)
3. Move to adopt Resolution 10536 (Intersection Parcel – NE 38th Place and 108th Avenue NE)

