

# Watershed Restoration and Salmon Recovery: Renewing our Partnership

28 Local Governments Working Together to Make Our  
Watershed a Place Where Salmon and People  
Can Live Together



Jason Mulvihill-Kuntz  
Watershed Coordinator  
Lake Washington/Cedar/  
Sammamish Watershed (WRIA 8)

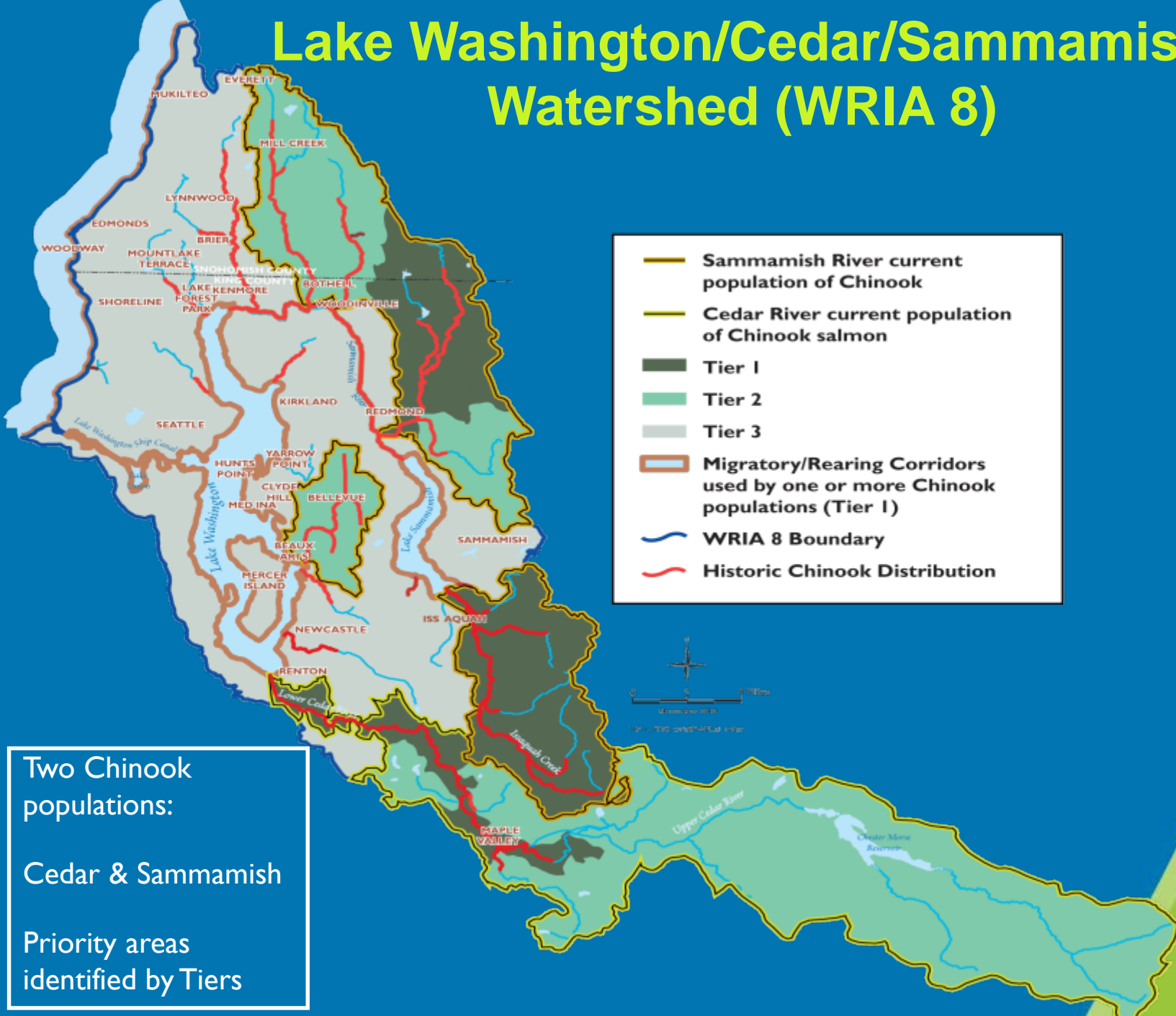
Kit Paulsen, Bellevue Utilities









City of Bellevue  
City Council Presentation  
February 23, 2015





# Lake Washington/Cedar/Sammamish Watershed (WRIA 8)



-  Sammamish River current population of Chinook
-  Cedar River current population of Chinook salmon
-  Tier 1
-  Tier 2
-  Tier 3
-  Migratory/Rearing Corridors used by one or more Chinook populations (Tier 1)
-  WRIA 8 Boundary
-  Historic Chinook Distribution



Two Chinook populations:  
Cedar & Sammamish

Priority areas identified by Tiers



# The Road to Recovery

- 1999 Chinook salmon listed as threatened
- 2001 Jurisdictions sign interlocal agreement (ILA) to recover salmon
- 2005 Watershed recovery plan completed – chapter of Puget Sound Salmon Recovery Plan
- 2006 Begin first 10 years of implementation
- 2007 Federal adoption of Puget Sound Recovery Plan
- 2010 Watershed Summit – Assess first five years of implementation
- 2015 First 10 years of implementation complete!  
Initial ILA sunsets



# Leadership: WRIA 8 Salmon Recovery Council

- Stakeholders representing:
  - *King and Snohomish Counties*
  - *26 cities*
  - *Community and environmental organizations*
  - *Local businesses*
  - *King Conservation District*
  - *Water and sewer districts*
  - *State and federal agencies*
  - *Citizens*
- Fostering strong regional collaboration and governance
- Leveraging individual jurisdiction dollars for watershed benefits



# What are the benefits of participating?

- Project/program grant funding
- Demonstrates proactive approach to address Endangered Species Act listing
- Stewardship and public outreach/education
- Regional leadership and partnerships



# Role of the WRIA 8 Salmon Recovery Council

- Advancing funding strategy
- Building capacity
- Supporting education and outreach
- Directing implementation
- Providing policy guidance



# What does the ILA Fund?

- Salmon Recovery Council and regional/state coordination
- Recovery Plan implementation
- Project grant program management
- Project tracking
- Communications, outreach, and education – telling the salmon recovery story
- Technical coordination, including
  - ❖ Assessing progress – monitoring and adaptively managing the Recovery Plan
  - ❖ Instigating critical research
  - ❖ Maintaining science-based restoration and protection strategy



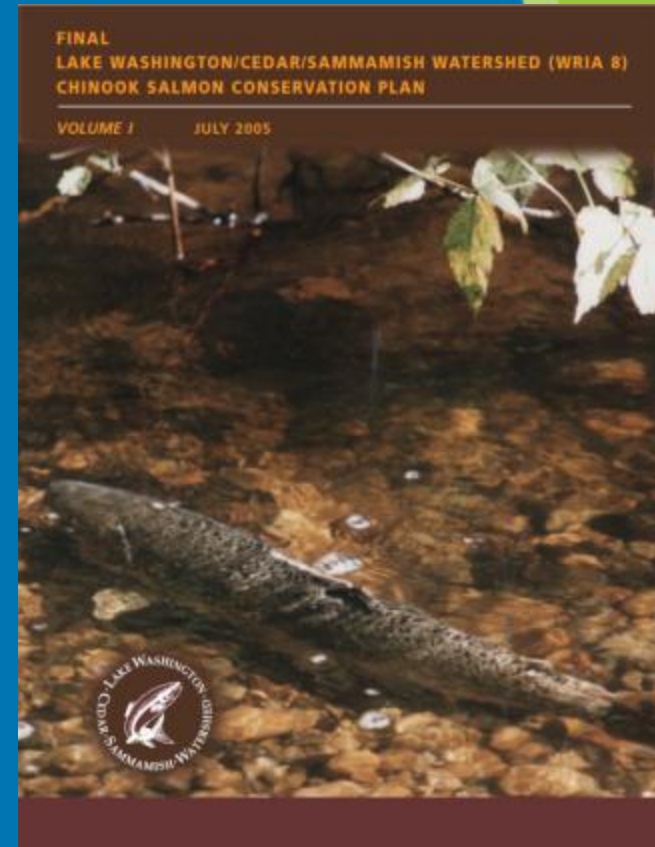


# WRIA 8 Plan: What Needs to be Done?

Identifies factors of decline, recovery goals, priority actions, and monitoring needs

Three types of actions:

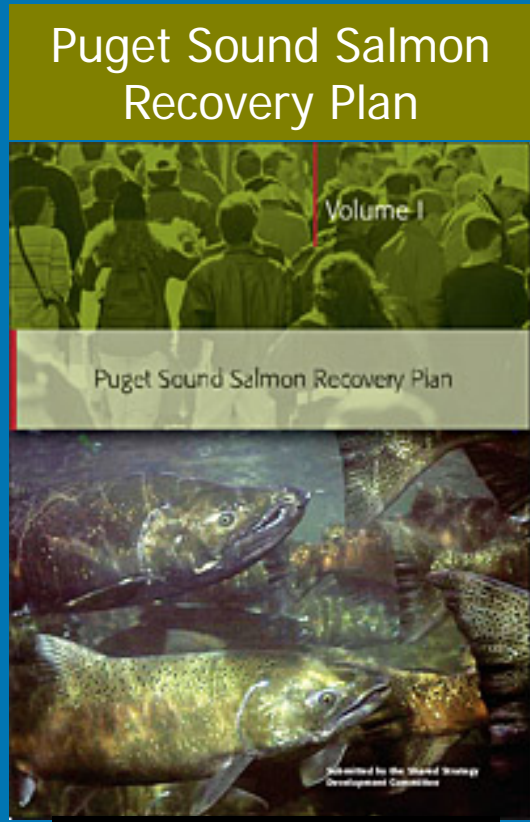
- On-the-ground projects – habitat protection and restoration
- Land use regulations and planning
- Outreach, education, and stewardship



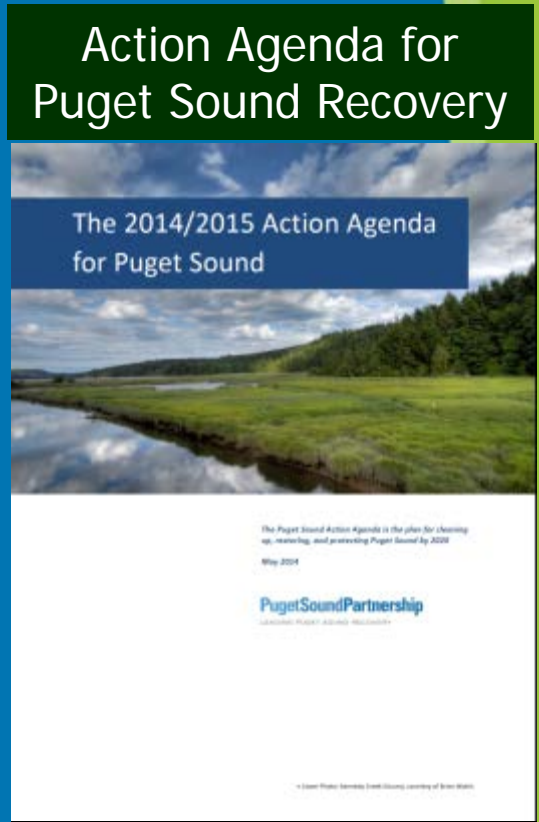
# Watershed Salmon Recovery Plan: Part of Puget Sound Recovery



Approved  
August 2005



Approved  
January 2007



Approved  
December 2008  
(updated 2014)

# What Have We Accomplished?

## Funding and Projects:

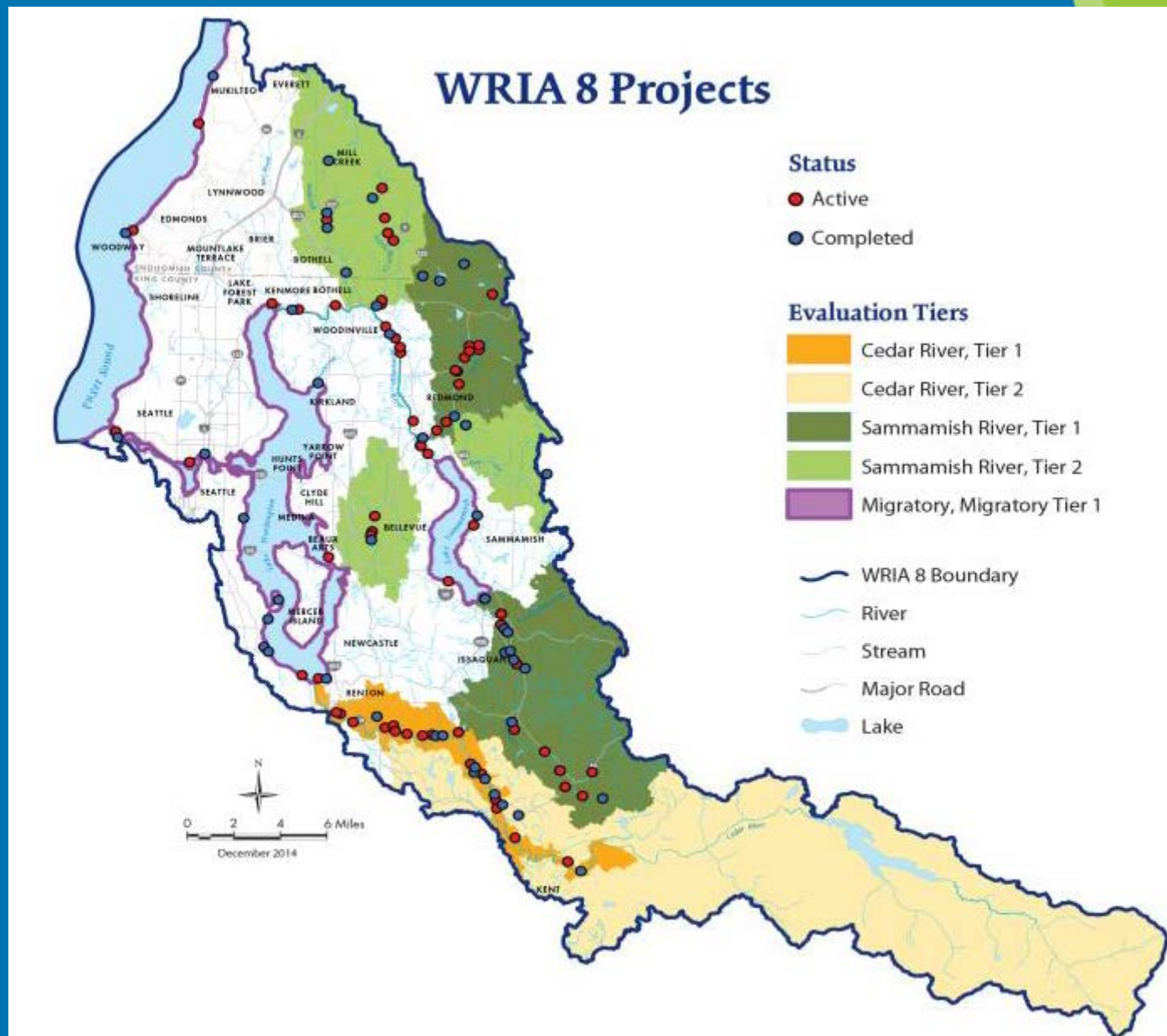
- Since 2005, 49 projects completed / 51 projects active
- From 1998 – 2014, allocated over **\$15 million** in KCD and King County Flood Control District watershed grant funds – leveraging over **\$28 million**
- From 1998 – 2014, allocated nearly **\$20 million** in federal and state funds – leveraging over **\$14 million**



# What Have We Accomplished?

## 10-Year Start List Project Implementation:

- 22% Completed
- 48% Completed/  
Active



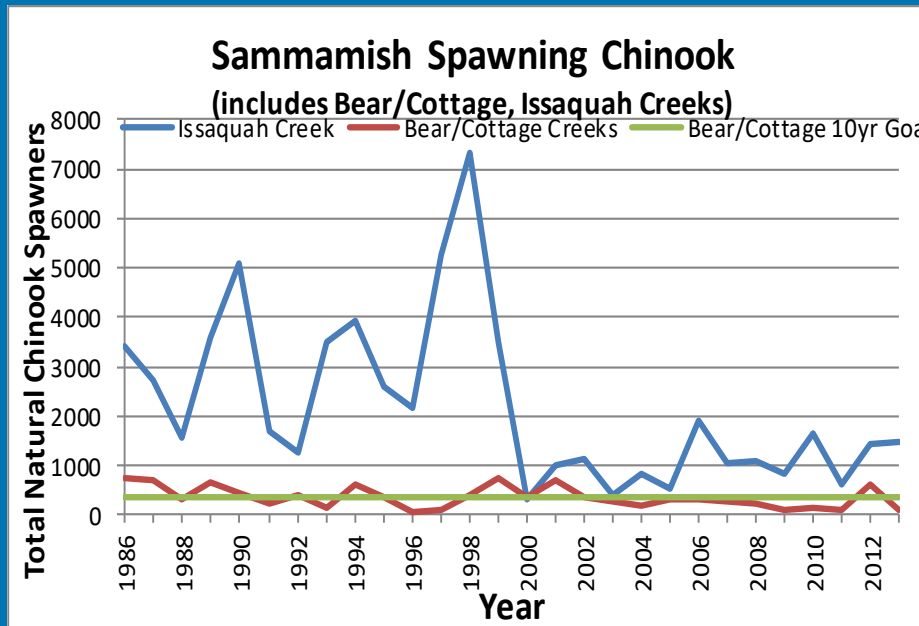
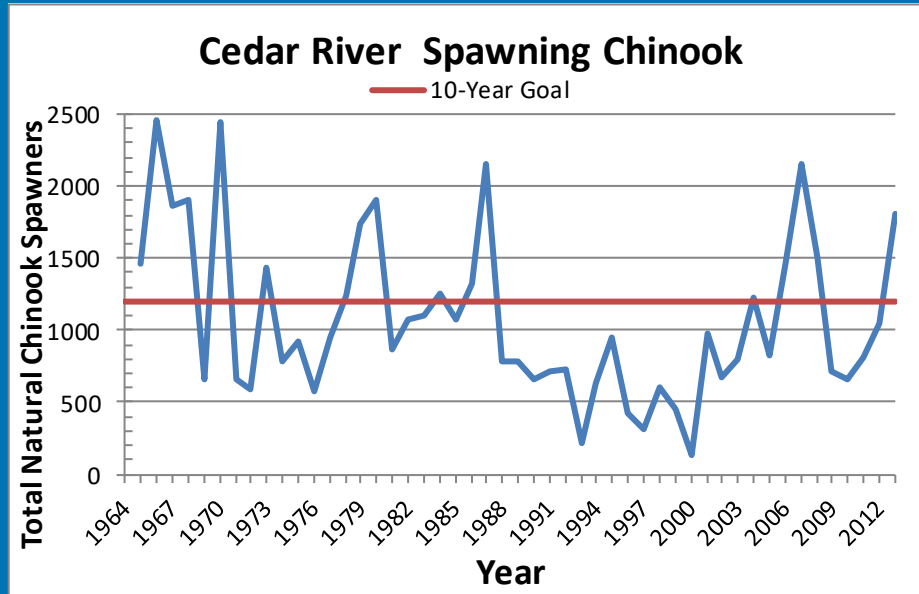
# What Have We Accomplished?

## Habitat protection and restoration:

- 2,625 acres protected through acquisition or easement
- Over 450 acres of riparian area treated/planted
- Nearly one mile of levees removed or set back
- Over 73 acres of floodplain reconnected
- Over 8,000 linear feet of lakeshore restored



# How Are the Salmon Doing?



# BELLEVUE ACTIONS



Mercer Slough Fish Ladder



Coal Creek Parkway



Richards Creek Channel Improvements



Kelsey at 121<sup>st</sup> St. (Trestle)



Bannerwood Park culvert



# BELLEVUE ACTIONS



Volunteer Monitoring



Riparian Restoration



General Outreach



Science Fairs



Salmon Watchers





# What's Next?

## Renewing WRIA 8 Interlocal Agreement and Memorandum of Understanding

---

- ❖ **January – May 2015:** WRIA 8 presentations to partner jurisdictions; ILA partners review and provide feedback on drafts
  
- ❑ **May – July:** WRIA 8 staff integrates feedback on ILA and MOU for Salmon Recovery Council approval
  
- ❑ **July – December:** Final ILA and MOU available for ILA partners' approval and signature by December



# Watershed Partners Creating a Place for People and Fish

