



# Grand Connection

## Update on Program & Crossing

Jesse R. Canedo, Assistant Director  
Anthony Gill, Grand Connection Manager  
**Community Development**

1/15/2025





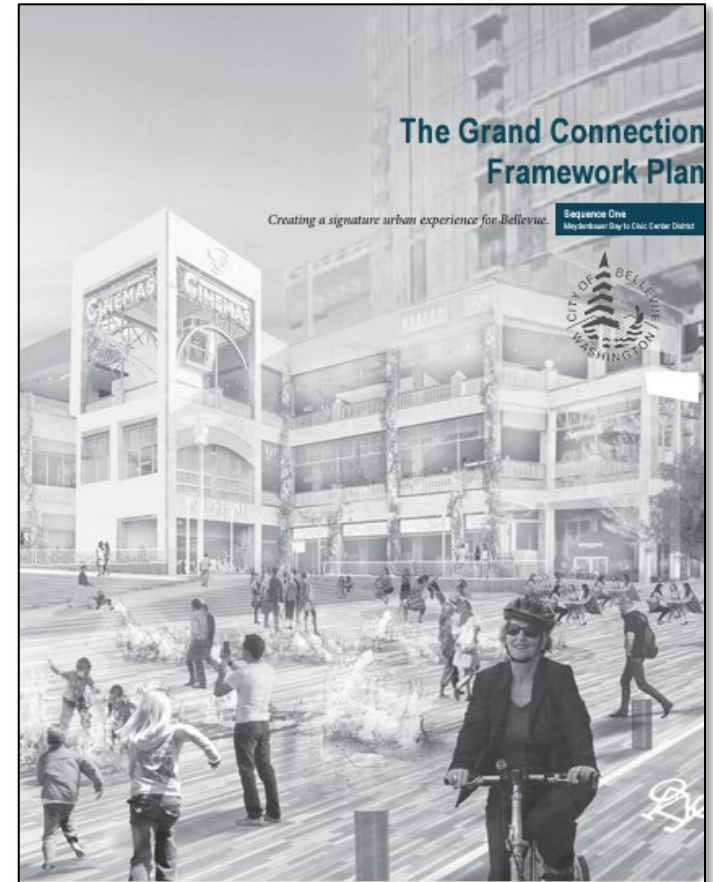
# Information Only

- Tonight's presentation is an informational report on the Grand Connection and an update on the 30% design for the Grand Connection Crossing.
- No action is requested.



# Agenda

1. Background and context
2. Overview of corridor
3. I-405 Crossing
4. City sites
5. Public space management and programming
6. Timeline and looking ahead







# Grand Connection Corridor





# Why the Grand Connection?



1. Increased density is **increasing demand** for public space, and for different *types* of public space.
2. Significant demand for **community connection**.
3. Desire for improved **active transportation options** within and across downtown



# What is the Grand Connection?

- A set of **interconnected pedestrian experiences** from Meydenbauer Bay Park through downtown, across I-405 to the Eastrail corridor in Wilburton.
  - Well-programmed public spaces
  - Grand Connection Crossing over I-405 to Eastrail
  - Improvements to Meydenbauer Bay Park and Downtown Park
  - Redevelopment along the route







# Grand Connection Crossing over I-405





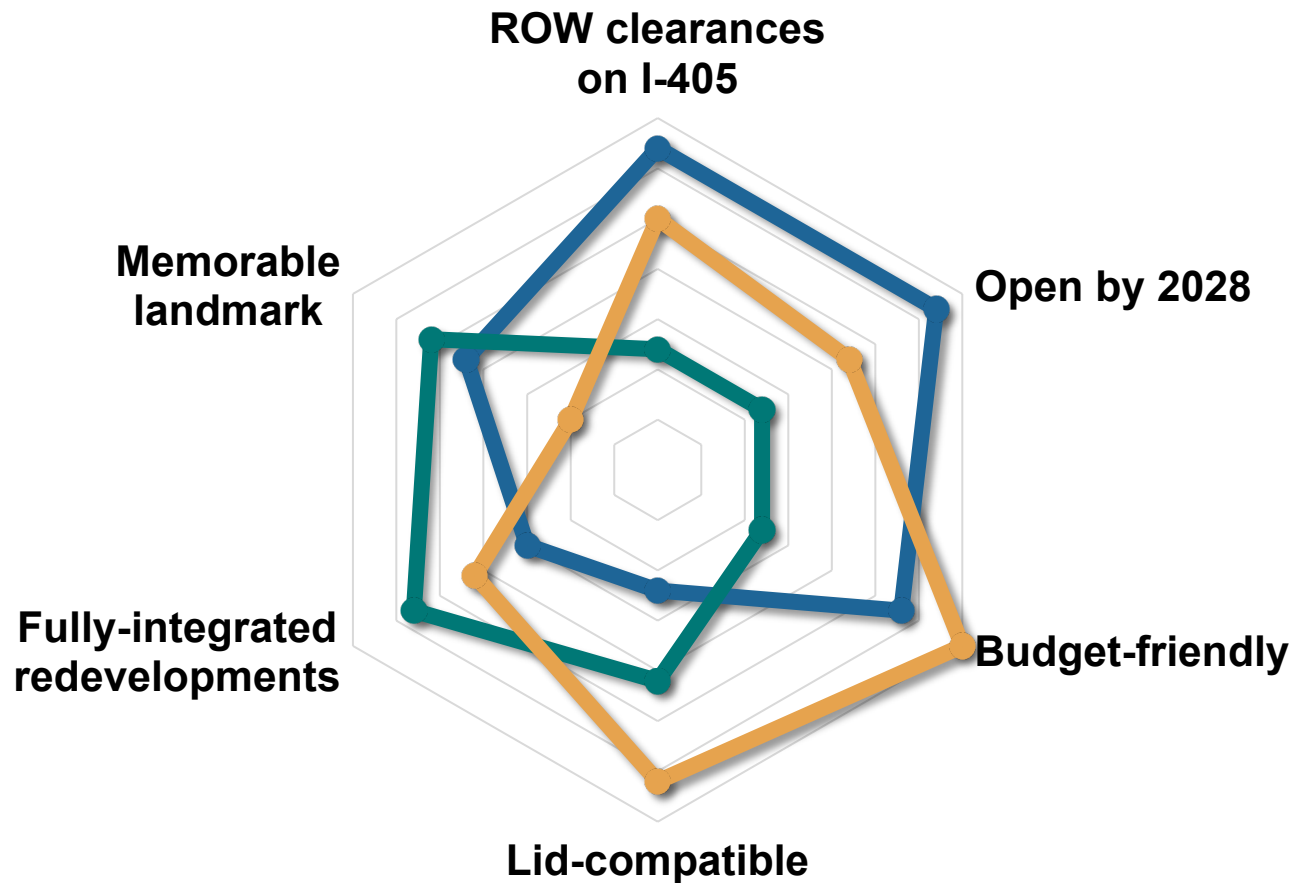
# Grand Connection Crossing

- **30% design** documents complete and in review by the City team.
- Current phase funded 50-50 by Amazon and the City of Bellevue.
- Friends building a **network of stakeholders and supporters.**
- Beginning early planning for next phase.





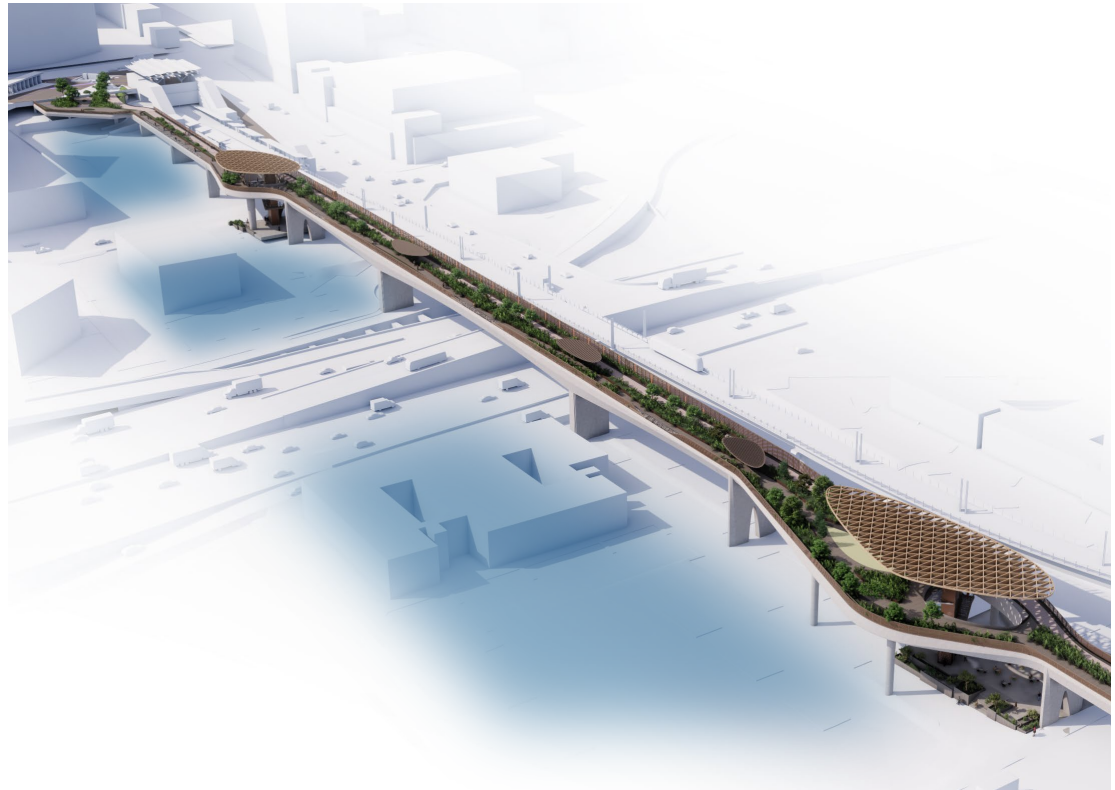
# Design tradeoffs





# Key Issue: Signature design

- Prioritize user experience
- **Evaluation based on:**
  - Structural analysis
  - Aesthetics
  - Maintainability
  - Compatibility with future freeway lid
  - Construction cost



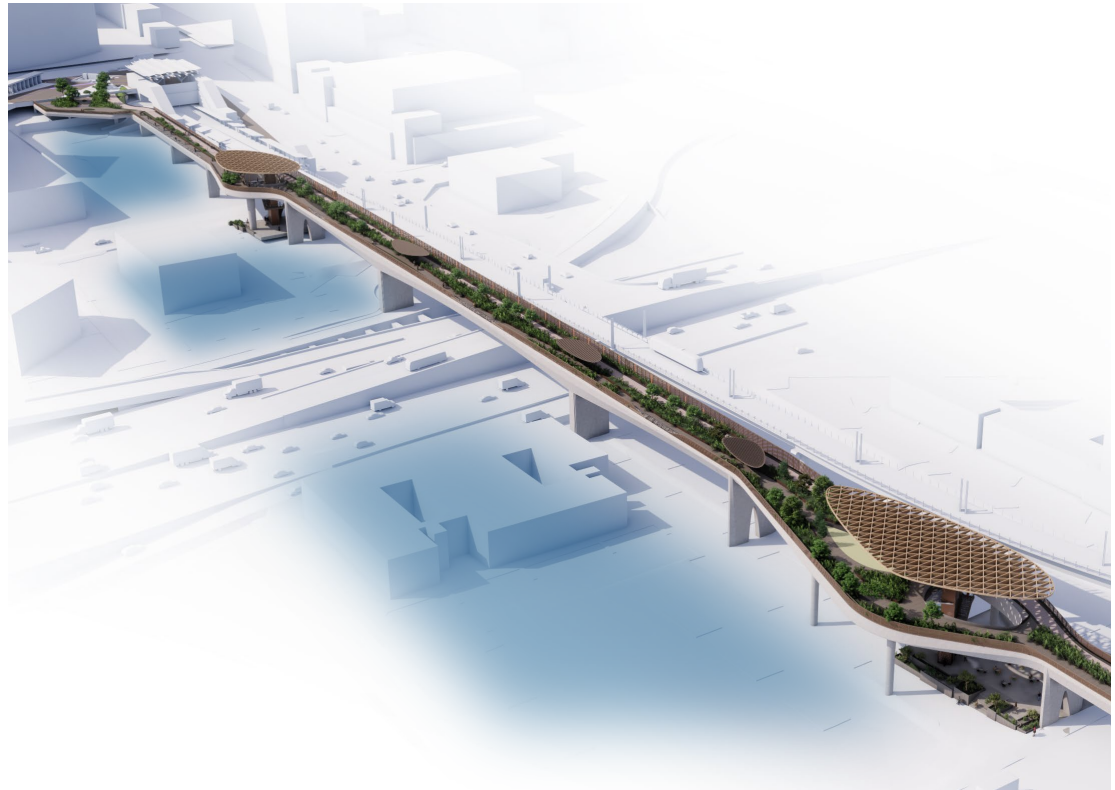
*Illustrative rendering only.  
Will continue to evolve as design progresses.*





# Key Issue: Integration

- **Close integration with redevelopment** will be a signature feature.
- Preserves more development capacity for property owners, including the City.
- Logistically complex

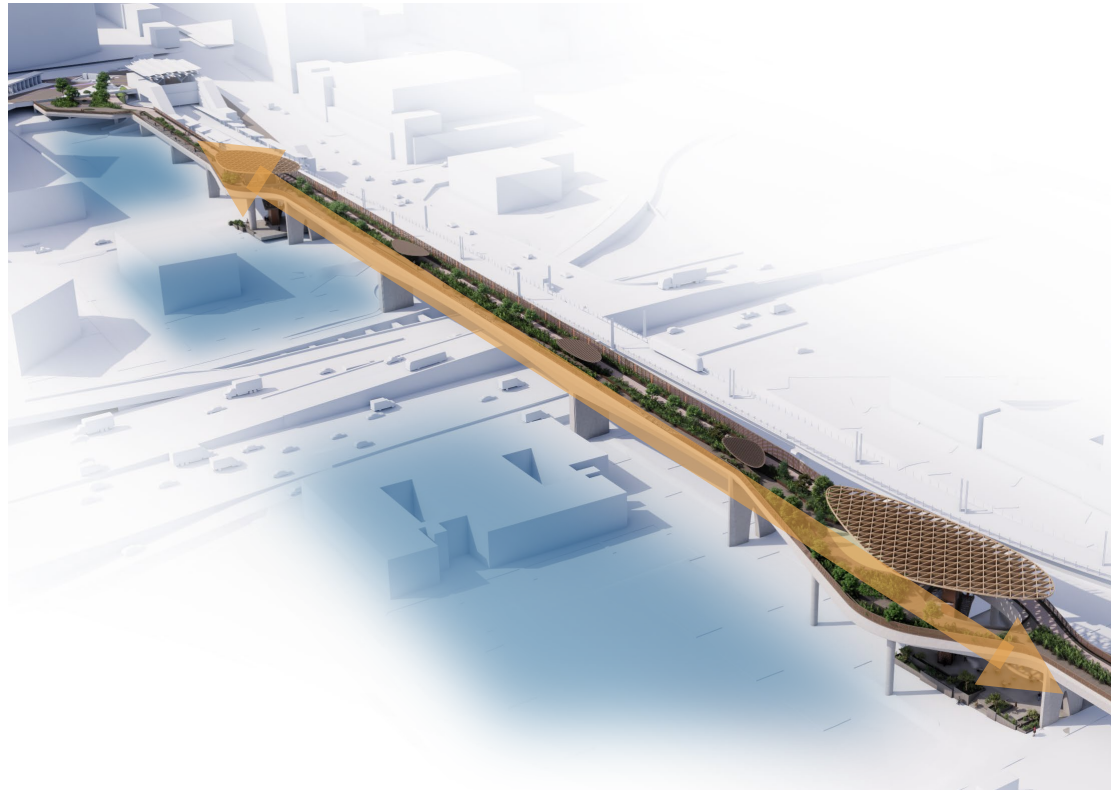


*Illustrative rendering only.  
Will continue to evolve as design progresses.*



# Key Issue: Timeline & phasing

- **Prioritize complete link** on Day 1 from City Hall Plaza to Eastrail.
- Consider phasing for amenity spaces and integrated structures.
- Cost estimates will help inform timeline.



*Illustrative rendering only.  
Will continue to evolve as design progresses.*



# Illustrative Experience





# Illustrative Experience



**View looking east toward the crossing from City Hall Plaza.**  
*Illustrative rendering only. Will continue to evolve as design progresses.*





# Illustrative Experience



View looking east on the crossing over I-405.

*Illustrative rendering only. Will continue to evolve as design progresses.*







**View looking west below the crossing from 116<sup>th</sup> Ave NE.**  
*Illustrative rendering only. Will continue to evolve as design progresses.*

# Funding development

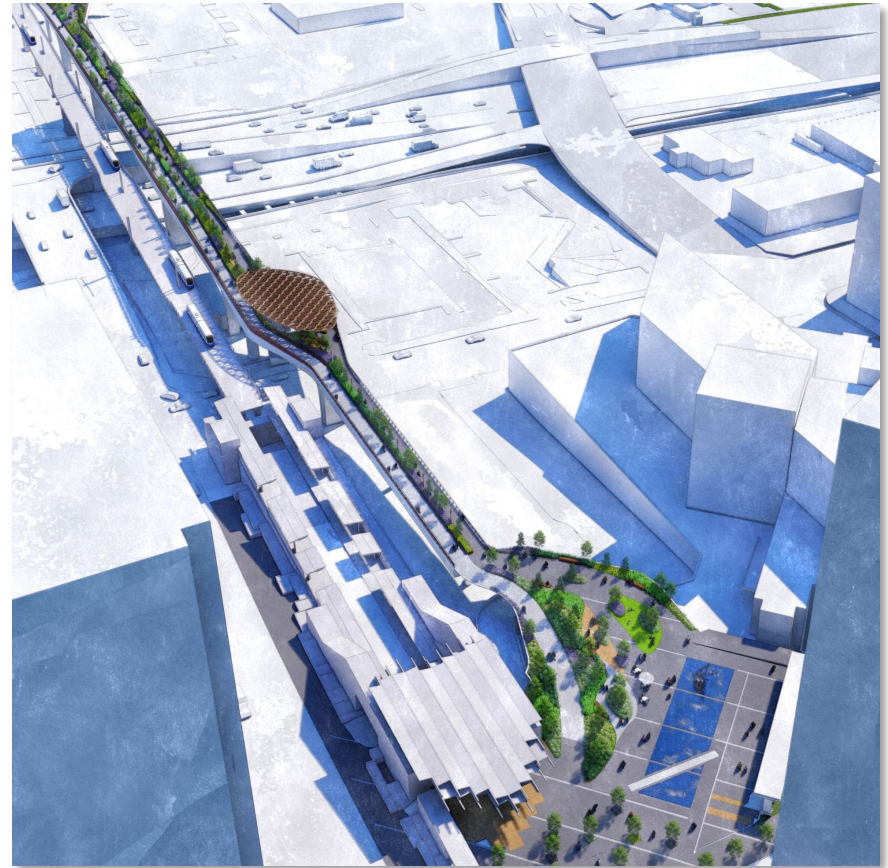
---

- **Cost estimates** currently in review by City staff, but we have options which align with initial \$150-\$250 million range.
- **Positive feedback** from congressional and state legislative delegations.
- **2025-26 budget:** \$15 million to fund continued design and engineering.
- **FOGC partnership** ongoing.
- Capital stack and benefits case in development.



# Looking Forward

- **Finalize** staff review of 30% design documentation, cost estimates, and environmental analysis.
- **Continue** funding development, engagement with Friends and public.
- **Return to City Council** in April with more information.



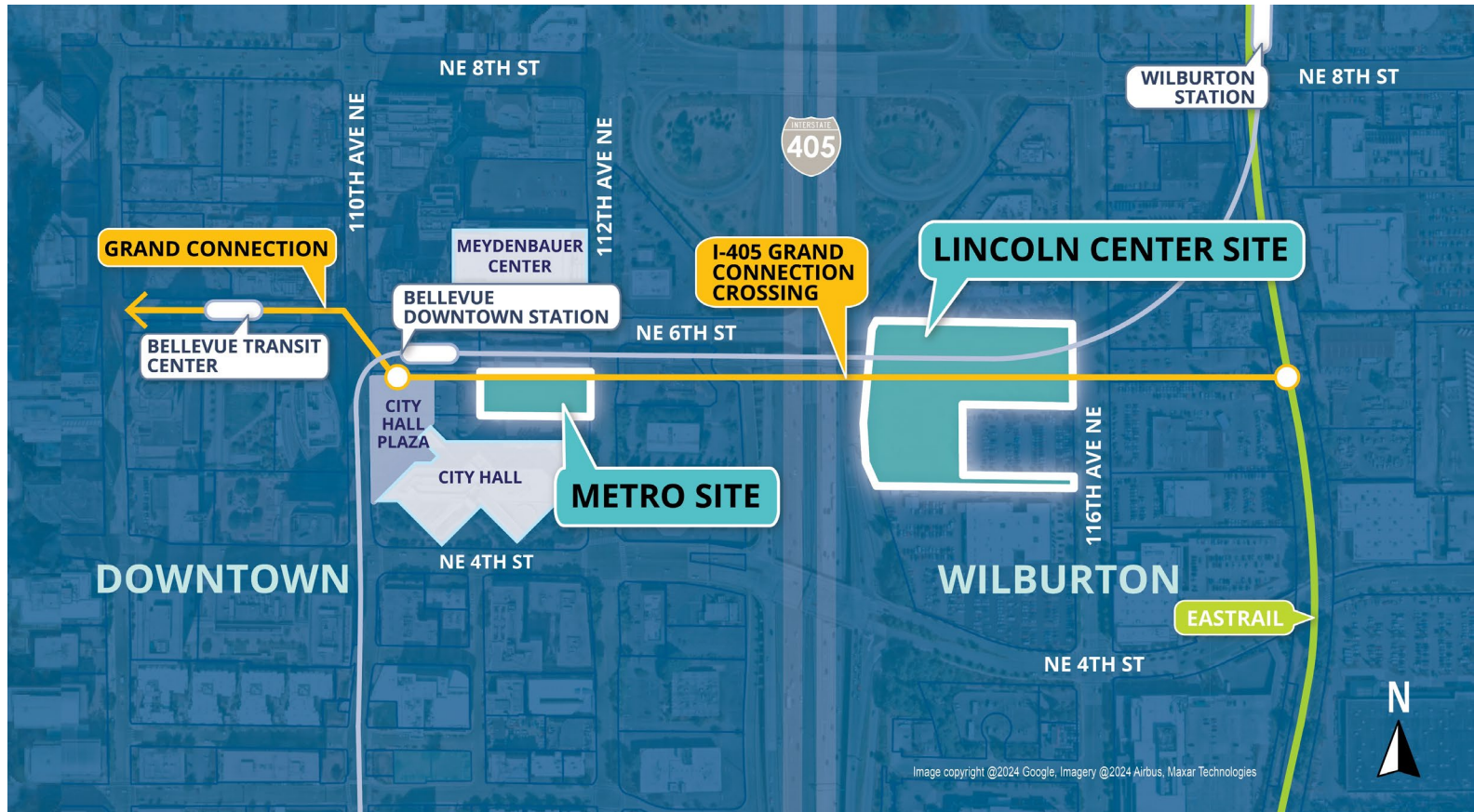


# Grand Connection sites (City-owned properties)





# City-owned properties



# City-owned properties

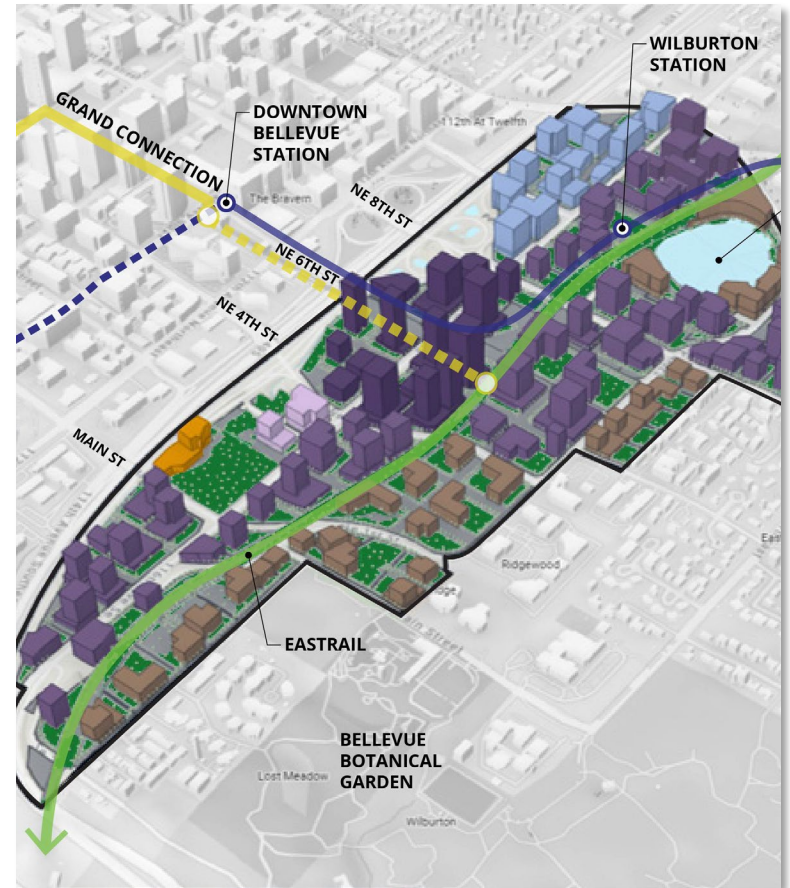
- **Developing Guiding Principles** for future uses of City-owned parcels.
- Informed by city facilities needs assessment.
- **Goal:** Integrated redevelopment which maximizes public benefits.





# District approach

- **Opportunity:** A grander story about the corridor and Wilburton to generate excitement and private-sector funding participation.
- Redevelopment becomes **more important.**





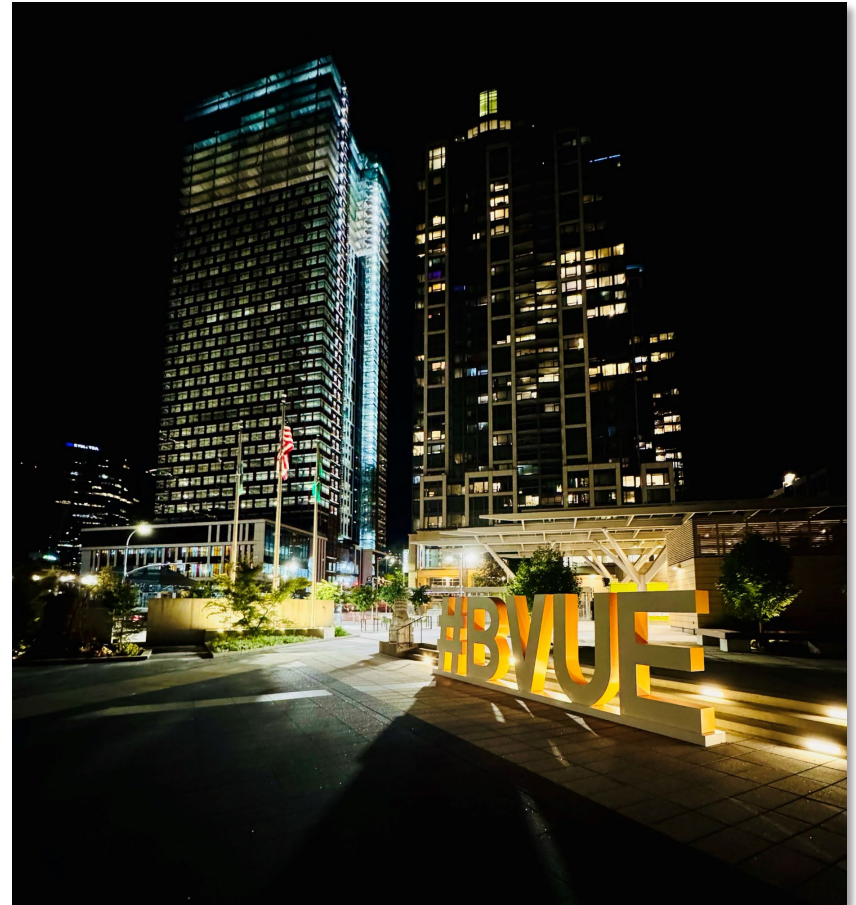
# Public space programming and management





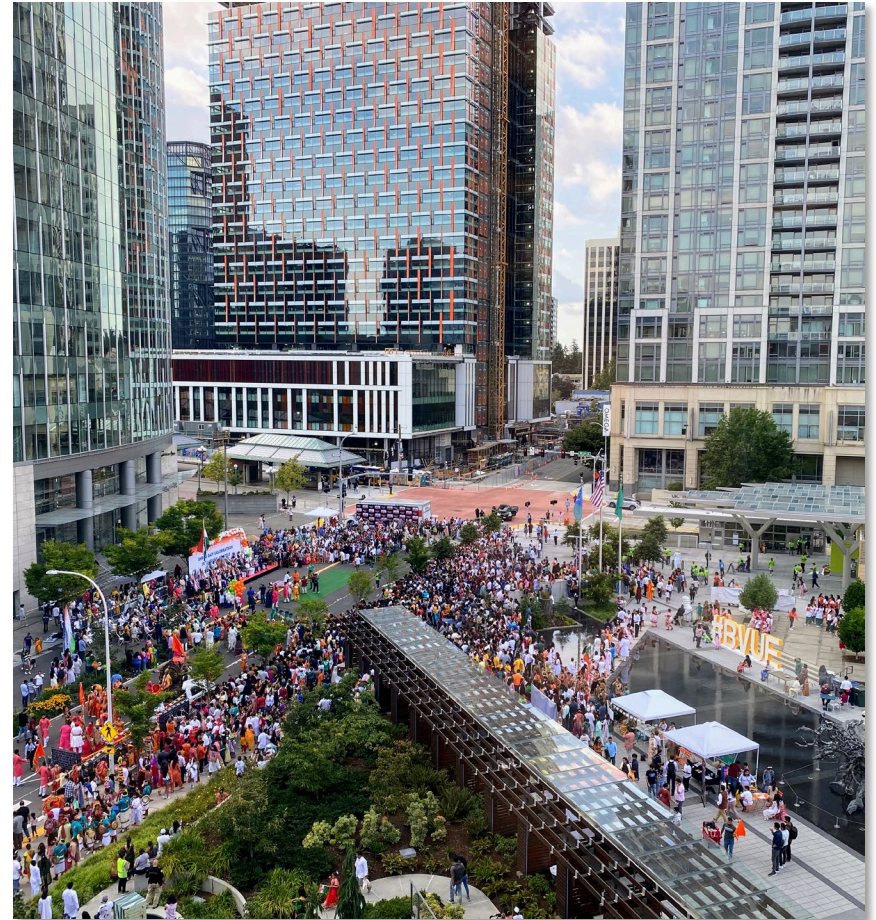
# 2024: City Hall Plaza pilot

- Tables, chairs, lawn games, selfie stations
- **Food trucks:** >3,500 customers in six months, driving >\$60,000 in revenue
- **2 Line opening celebration:** >10,000 people
- **India Day celebration:** >3,000 people



# 2025: Expanded programming

- Additional programming through BDA partnership
- Broaden City Hall Plaza pilot to **incorporate more spaces** and partner orgs
- Improve access to City Hall on weekends
- **Roll out Eproval** for special events







# Information Only

- Tonight's presentation is an informational report on the Grand Connection and an update on the 30% design for the Grand Connection Crossing.
- No action is requested.

