



City of Bellevue

# Link 2 Line Grand Opening

**Briefing for opening day events and the start of 2 Line service**

Maher Welaye | Transportation

Laura Milstead | City Manager's Office

Andrew Popochock | Bellevue Police Department

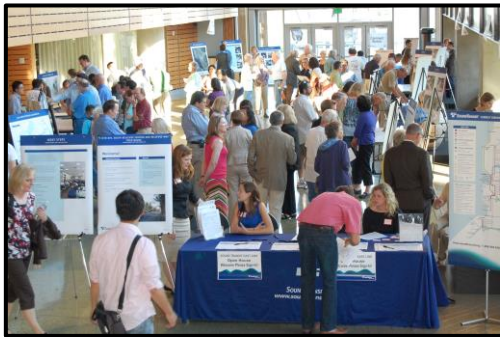
April 23, 2024

A decorative blue line starts from the left edge of the slide, extends horizontally to the right, then turns 90 degrees downward, ending with a solid blue circle.

**Information only**

# From East Link to the 2 Line

**2008: East Link approved by voters**



**2008 - 2015: City and Sound Transit conduct outreach and finalize MOU**

**2016: Construction begins**



Photo: Sound Transit

**2022: downtown Bellevue tunnel completed**

**2023: System testing begins**

**2024: Starter Line opens**

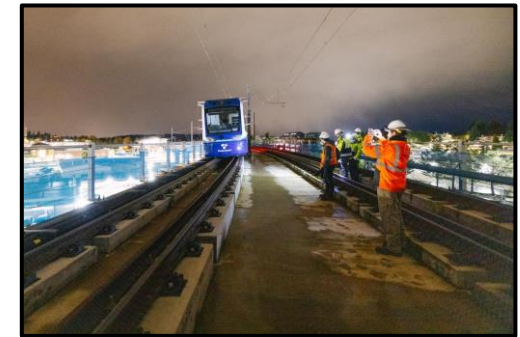


Photo: Sound Transit

**2024: Simulated service for the 2 Line begins**

**2025: Full 2 Line opens (anticipated)**



# Start **2** Service



8 stations between Redmond Technology Center and South Bellevue.



Operating Hours: 2-car trains running every 10 minutes between 5:30 am – 9:30 pm. Seven days per week.



1,500 parking spots - South Bellevue station  
300 parking spots - BelRed station



No service changes to current King County and ST Express routes

# Time **2** Celebrate

- Ribbon cutting ceremony at Downtown Bellevue station scheduled Saturday, Apr. 27 at 10 am
- King County Metro shuttle service from South Bellevue station and Downtown Bellevue station starting at 8:30 am.
- Community-led events scheduled at all 8 stations between 11 a.m. – 4 p.m.



Image: Sound Transit

# Public safety along the 2 Line

- The Bellevue PD's new Light Rail Unit (BLU) will be visible starting 4/27.
- Officers available to assist with the unique challenges light rail could provide.
- **Goal:** Foster a safe and positive riding experience for residents while also reducing crime and fear of crime.

