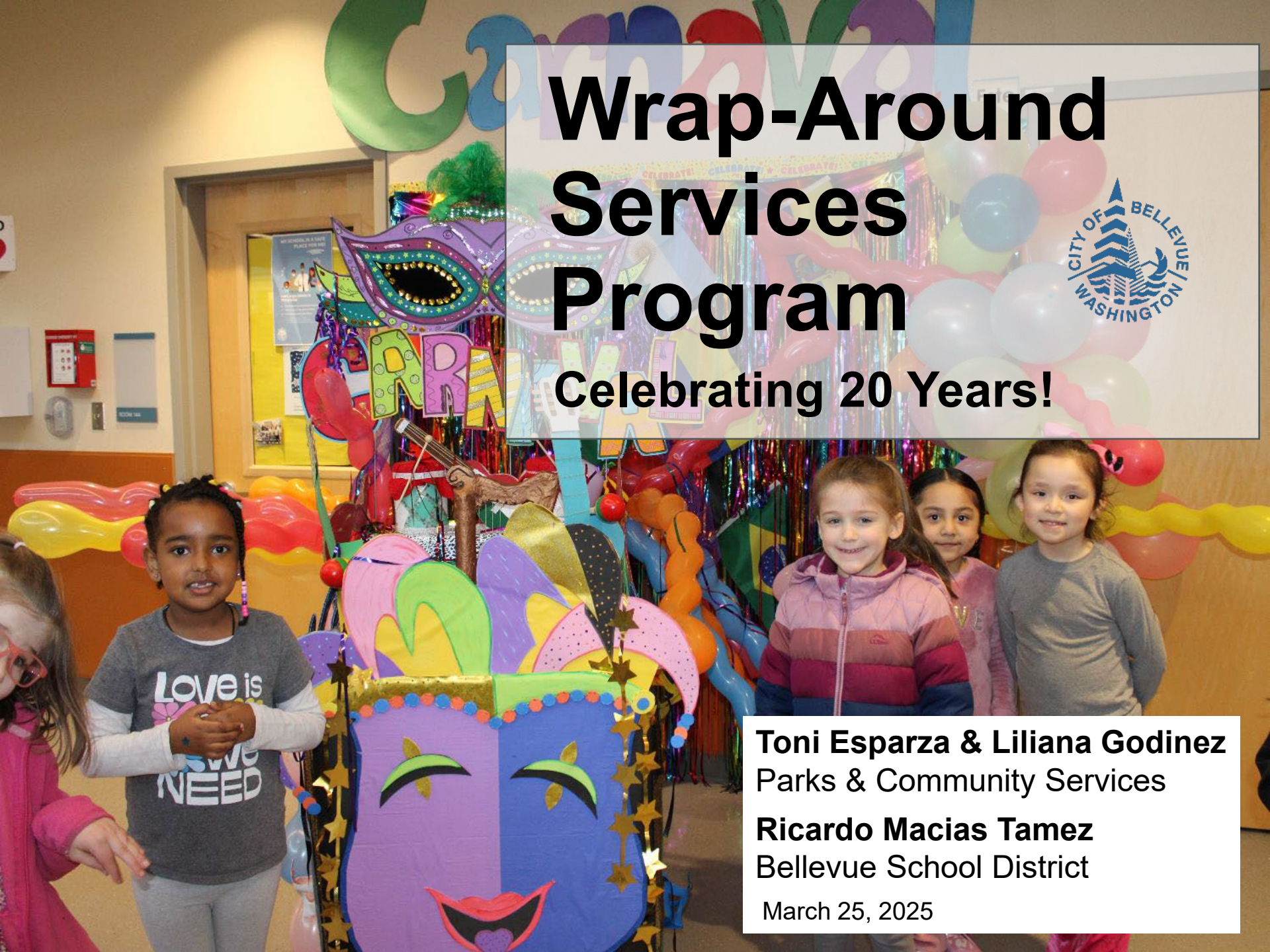


Wrap-Around Services Program

Celebrating 20 Years!



Toni Esparza & Liliana Godinez
Parks & Community Services

Ricardo Macias Tamez
Bellevue School District

March 25, 2025

Background

- Started in 2005
- Innovative partnership between City of Bellevue and Bellevue School District
- Emphasis on collaboration to increase student outcomes and belonging
- 2 City of Bellevue staff are placed in BSD schools





Lake Hills Elementary

- At least 61% of students qualify for free/reduced lunch
- 23-24 School Year: served 46 students experiencing homelessness
- 24-25: served 43 students experiencing homelessness, through January

Locations

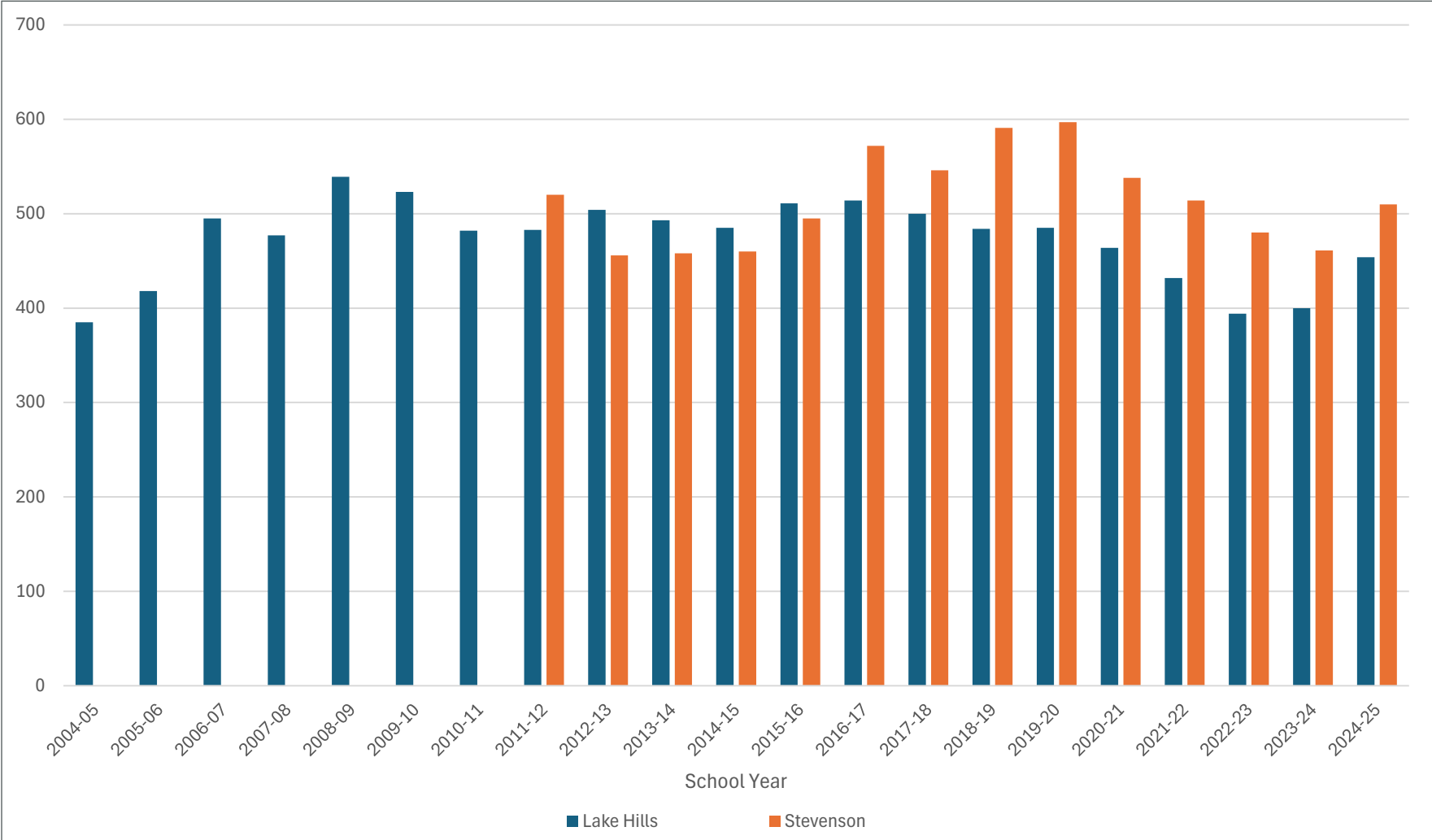


Stevenson Elementary

- At least 52% of students qualify for free/reduced lunch
- 23-24 School Year: served 81 students experiencing homelessness
- 24-25: served 87 students experiencing homelessness, through January



Impact at Stevenson and Lake Hills





How is the work accomplished?



Program Delivery



- Social Issues
- Academic Needs
- Recreation
- Family Services
- Health Issues
- Community Needs

Work In Action

- Host parent groups
- School-based teams
- Create new partnerships
- Family nights
- Community celebrations
- Support volunteers
- Build relationships with donors
- Support grade level transitions
- Crisis intervention and response





Outcomes

Children
Families
Community



Thank you from the Bellevue School District



- Witnessing impact first-hand
- Power of partnerships:
Supporting **ALL** Students



Thank you from the Bellevue School District



- Filling in gaps
- Families
- Looking to the future





Thank You!

