

# VISION 2050

Bellevue City Council

April 22, 2019



Puget Sound Regional Council



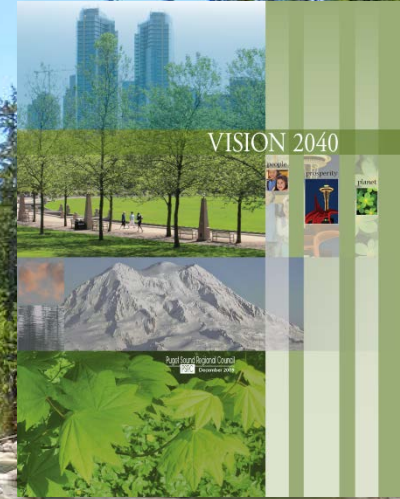
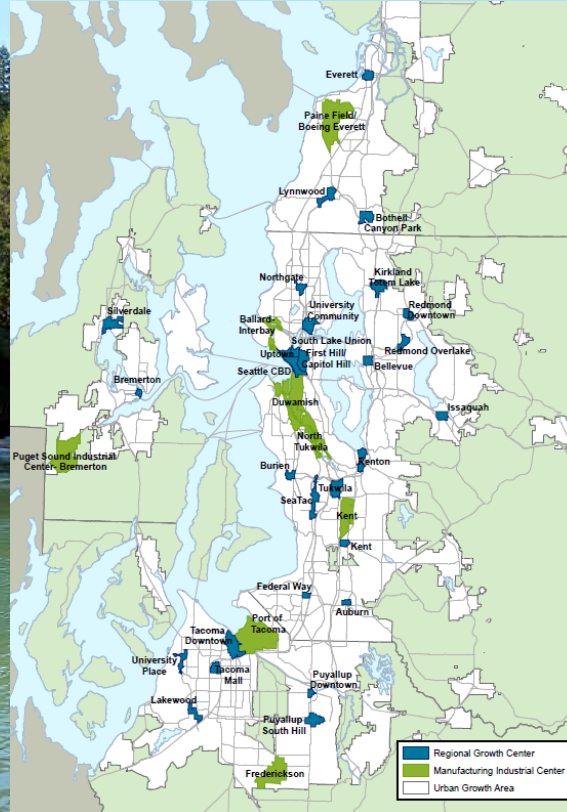
# VISION 2040



# VISION 2050



- A strong economy and a healthy environment
- Preserve waters, farms, recreation and resource lands
- Urban Growth Area and centers strategy
- Local actions to achieve regional VISION

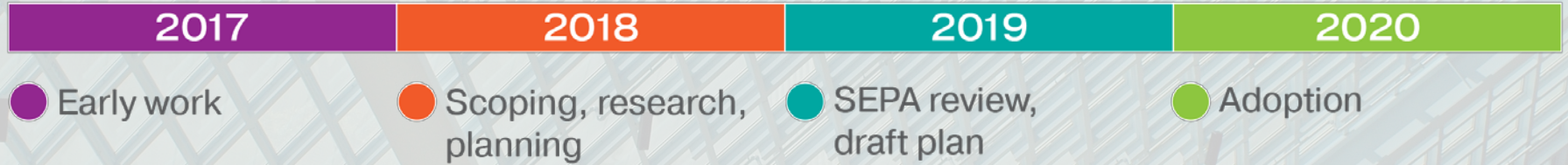




# VISION 2050 Work Program



## VISION 2050 Work Program

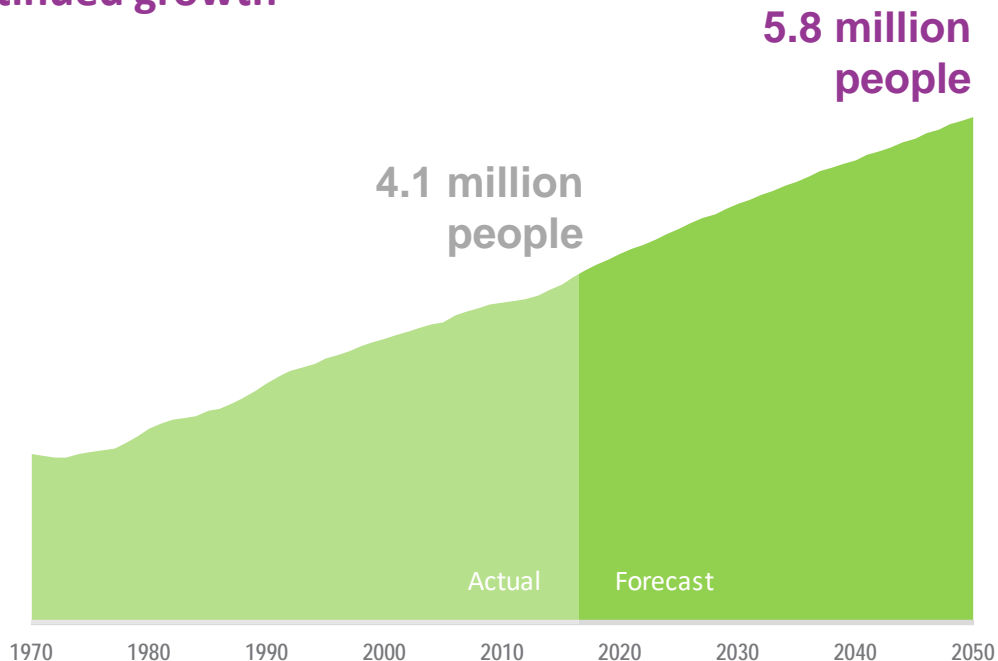


# 2050 Population Forecast



## The long range forecast is for continued growth

- The region is projected to grow by about **1.8 million people** between 2017 and 2050
- Continued job growth combined with dynamics of an aging population are key drivers of the population forecast

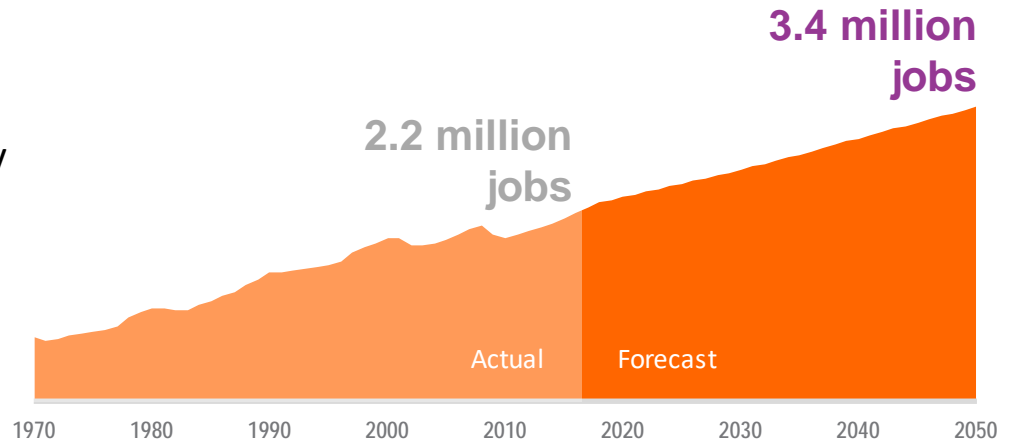


# 2050 Employment Forecast



## The long range forecast is for continued growth

- The region is projected to add about **1.2 million jobs** between 2017 and 2050
- A robust, diversified regional economy that continues to outperform the national economy is the key driver for the jobs forecast



# Who will be living here?



In 2050, the region's residents will be:

## Older



18% of the region's population will be over the age of 65 by 2050, up from 14% today.

## More diverse



Between 2000 and 2016, 81% of the region's population growth was people of color.

## In smaller households



In 2050 there will be 2.36 people per household on average, down from 2.50 today.

# Scoping: What We Heard

- Housing supply and **affordability** top concerns
- Growth strategy should be **achievable** and reflect known trends
- Address **climate**, access to **jobs**, **equity**, and **health**
- Revisit the role of **urban unincorporated areas**







# Growth Alternatives





# Growth Alternatives

## Stay the Course

Growth focused in Metropolitan and Core cities

## Transit Focused Growth

More compact growth focused in high capacity transit (HCT) areas

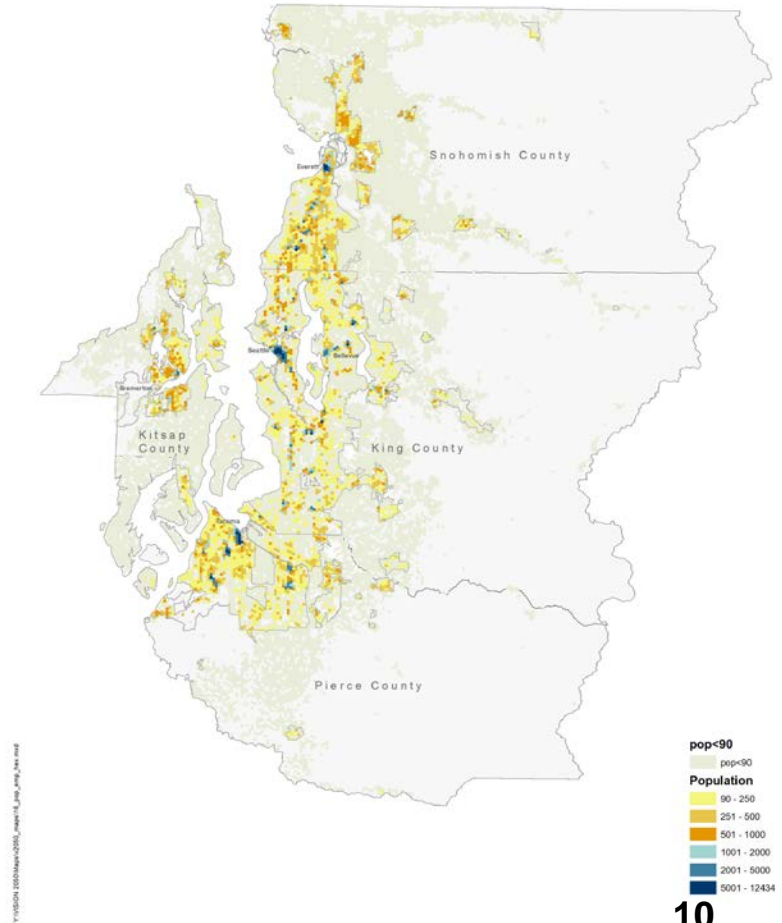
## Reset Urban Growth

Growth more distributed throughout the urban growth area

## Growth Alternatives

***Compact growth focused in  
Metropolitan and Core cities with  
regional growth centers***

- Maintains current adopted strategy
- Largest shares of growth to Metropolitan cities of Seattle, Bellevue, Everett, Bremerton and Tacoma
- Directs more growth to cities and less growth in urban unincorporated and rural areas



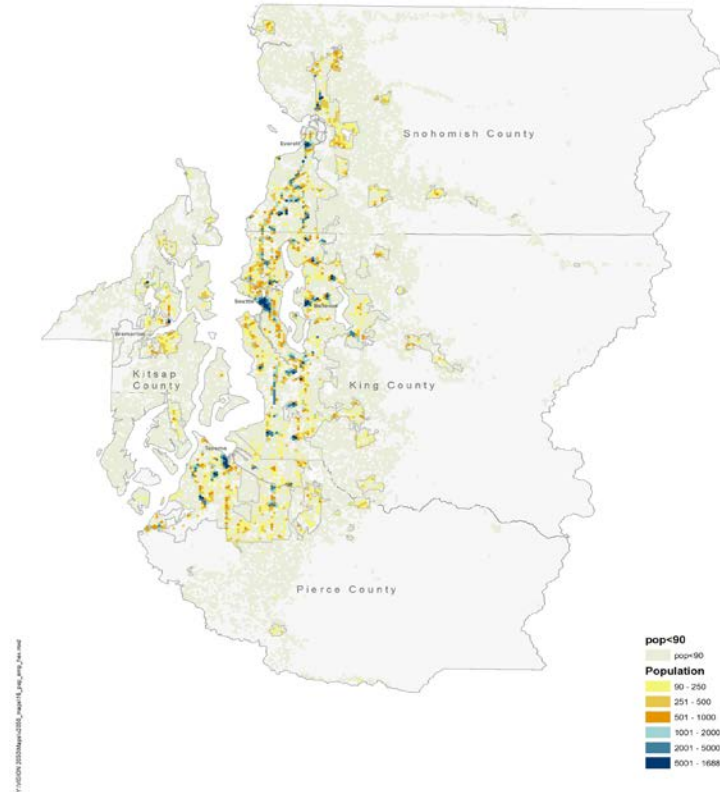
# Growth Alternatives



## Transit Focused Growth

Accelerated growth near existing and planned high capacity transit investments

- ***Goal for 75% of the region's growth to occur near high capacity transit***
- Less growth in rural and unincorporated areas without high capacity transit



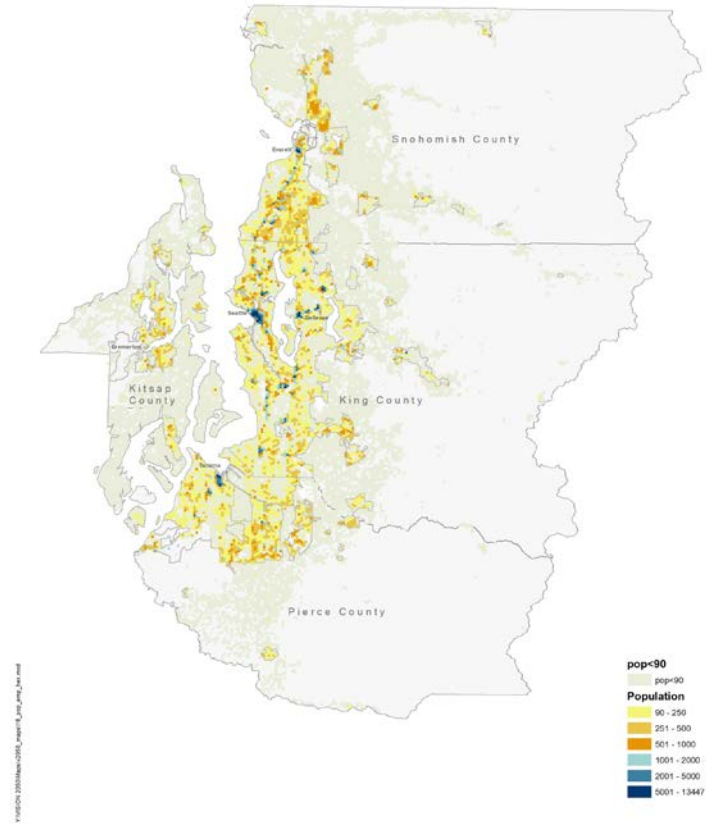


# Growth Alternatives

## Reset Urban Growth

More dispersed growth throughout the urban growth area

- Assumes a large share of growth to Metropolitan and Core cities
- Growth for other urban areas based on current land use capacity
- More growth in rural and urban unincorporated areas



# Environmental Impacts



## Stay the Course

(plan extended)

## Transit Focused Growth

## Reset Urban Growth



Vehicle delay

Increases to 31 hours



Job access by  
biking, walking,  
or transit

Substantial increase



CO<sub>2</sub>  
emissions

41,000 tons per day CO<sub>2</sub>  
equivalent



Compared to Stay the Course

# Environmental Impacts



## Housing Density

(moderate=townhome, triplex,  
low-rise MF)

**Stay the  
Course**  
(plan extended)

15% moderate-density  
46% high-density  
39% low-density

**Transit Focused  
Growth**



**Reset Urban  
Growth**



## Displacement risk

**Elevated risk**



## Jobs-housing balance

**Improved balance**

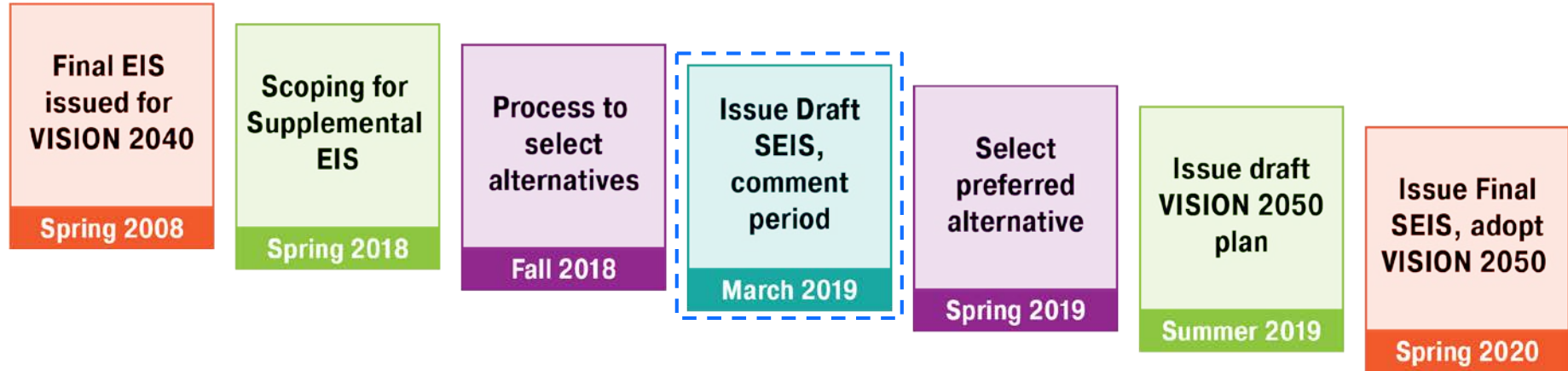


Compared to Stay the  
Course





## VISION 2050 SEPA Process



# How to Comment

Draft SEIS Review - Feb 28-April 29

More info at: [www.psrc.org/vision](http://www.psrc.org/vision)







# Thank you.

Paul Inghram, AICP  
[pingram@psrc.org](mailto:pingram@psrc.org)