



City of Bellevue

New Park in the Eastgate Neighborhood

Camron Parker & Zarrian Smith
Parks & Community Services

Parks & Community Services Board | May 21, 2025



Project Background



Community Engagement



Community Feedback



Conceptual Plan Options



Next Steps



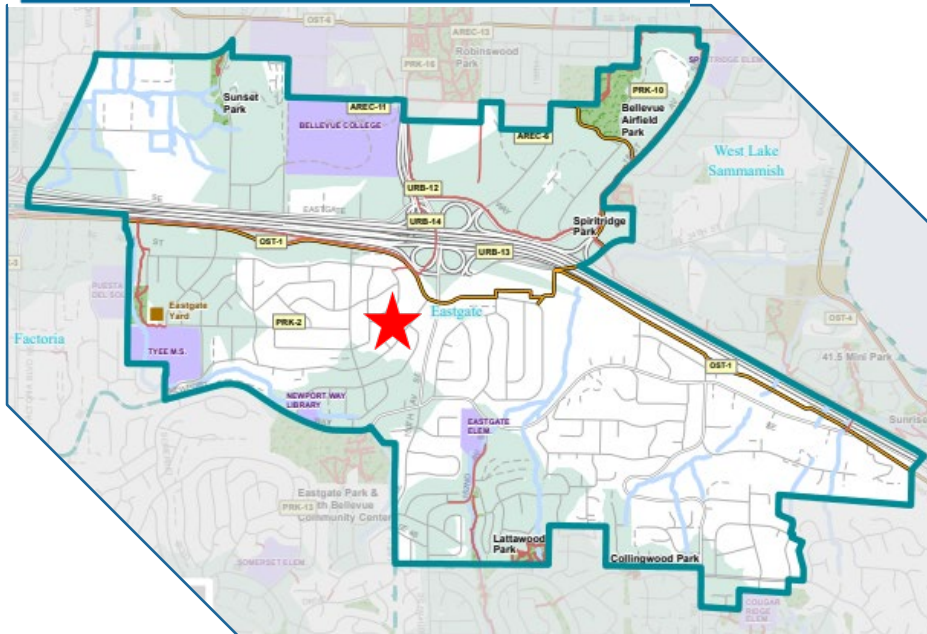
Questions and Comments

A decorative blue line starts from the left edge of the slide, extends horizontally to the right, then turns 90 degrees downward, ending with a solid blue circle.

Project Background

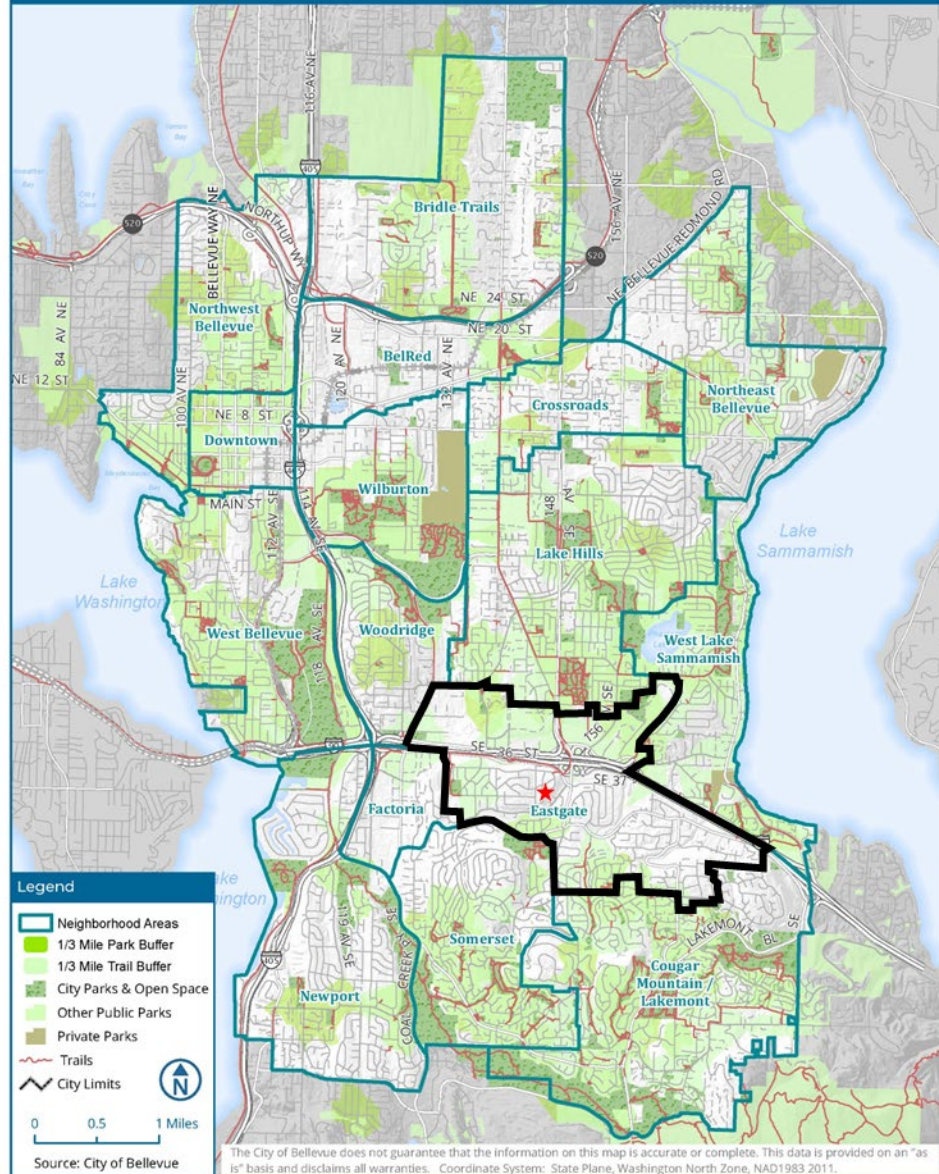
Park Location

Eastgate Neighborhood Area



Walkable Access

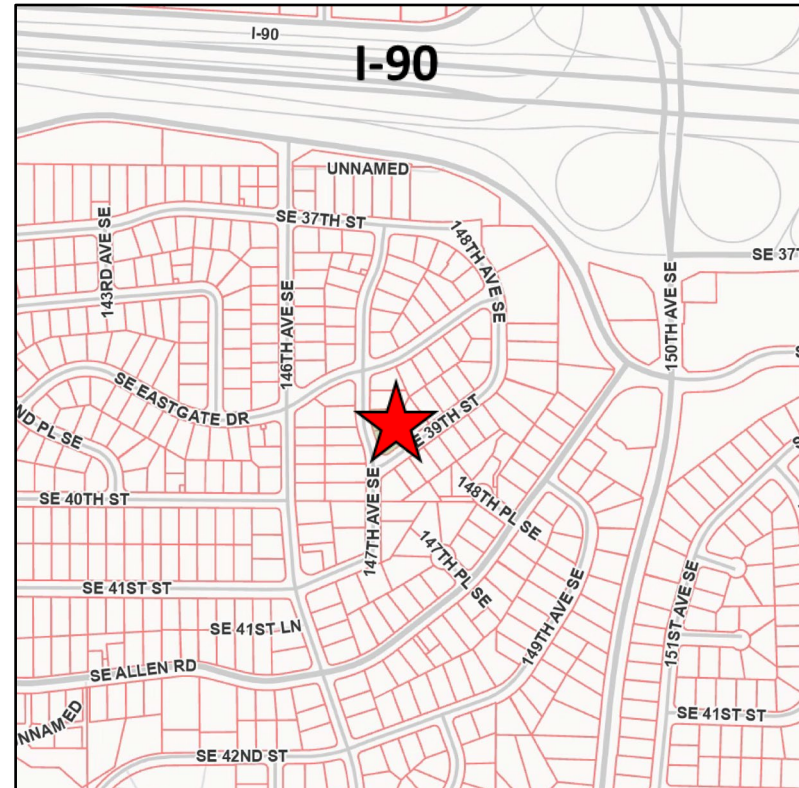
1/3 Mile Buffers



Plot Date: 1/28/2022 File Path: V:\Parks\ArcGIS\Plan2022\CityWideMapAccess\PIBuffers_1_3MileBuffNetwork_2022_8x11.mxd

IT Department

New Neighborhood Park





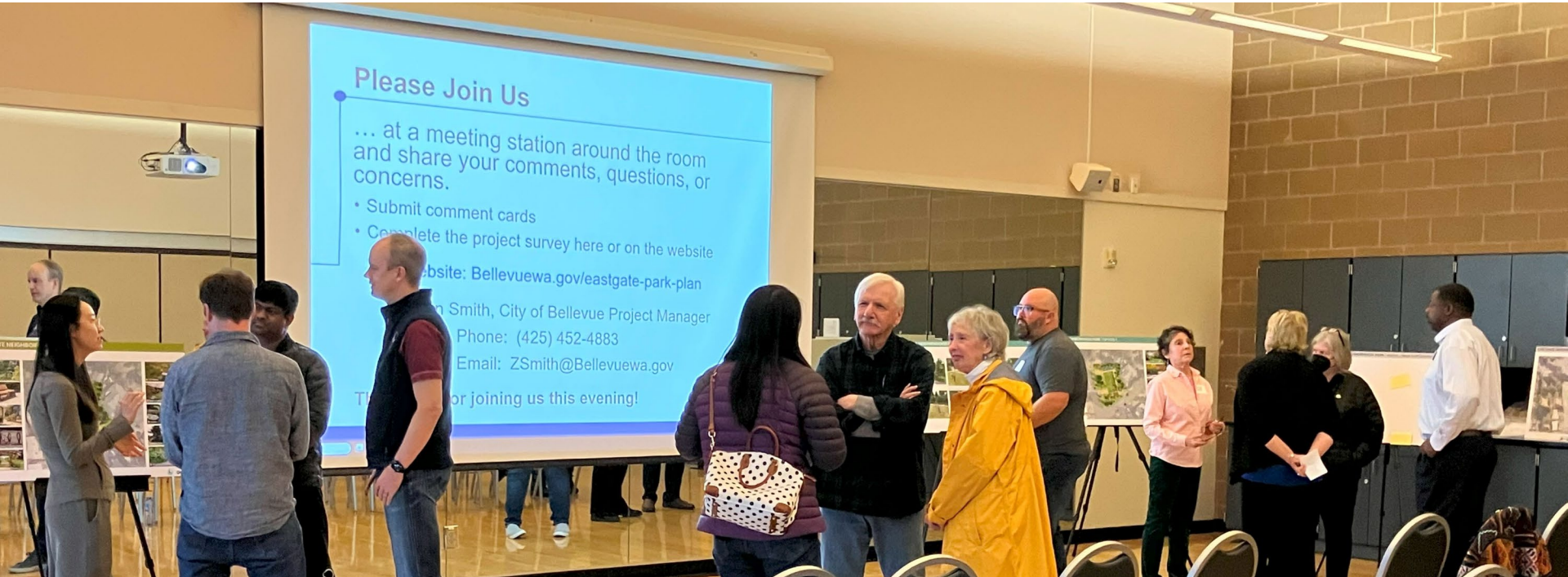
Community Engagement

Public Outreach

Goal and objectives

- Provide a range of opportunities for community input
- Generate broad reaching, cross cultural input
- Engage community stakeholders
- Keep public and Parks & Community Services Board informed

Community Meetings

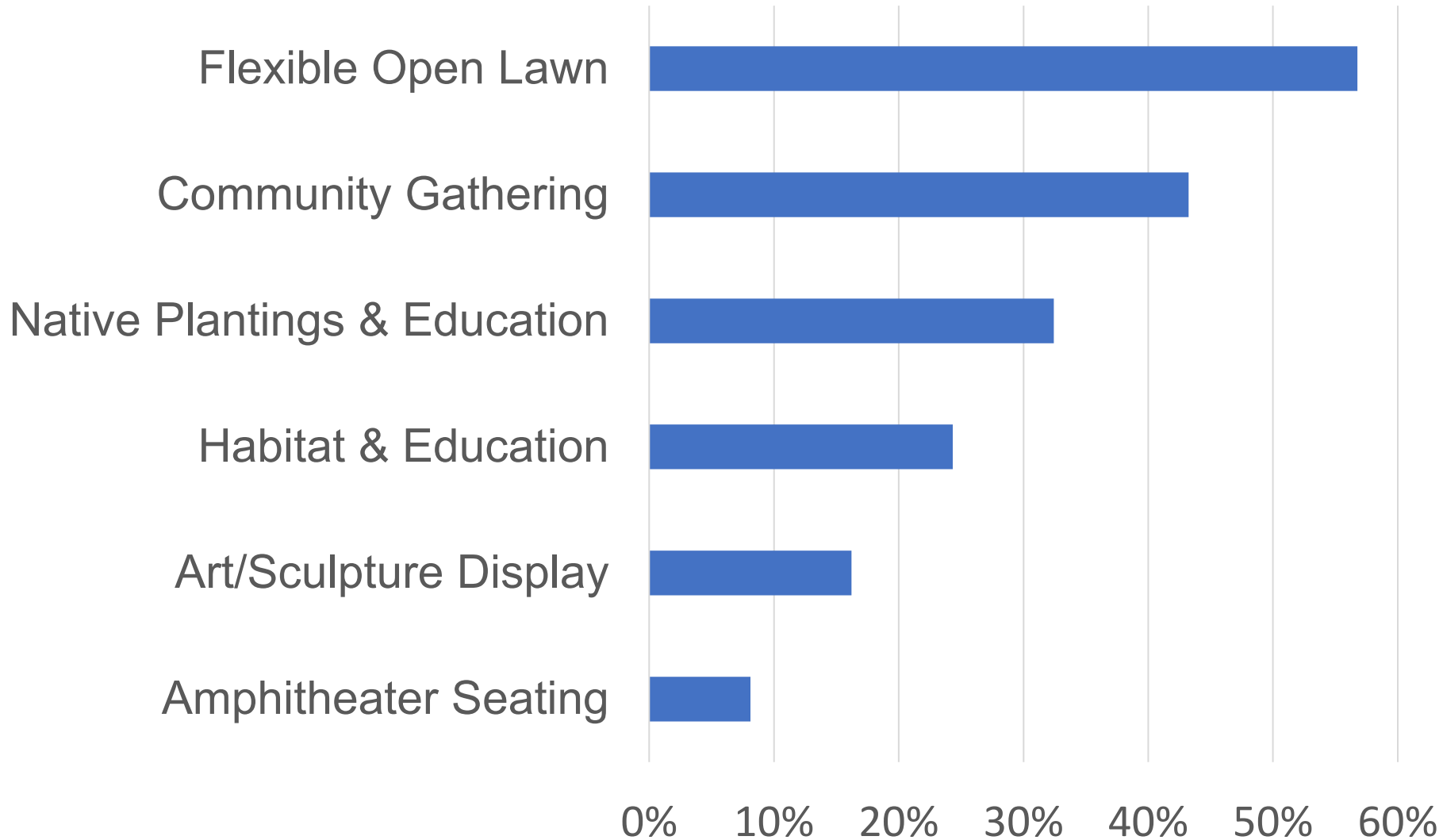


- Park Board Meeting – July 17, 2024
- Community Meeting – January 16, 2025
- Community Meeting – March 27, 2025

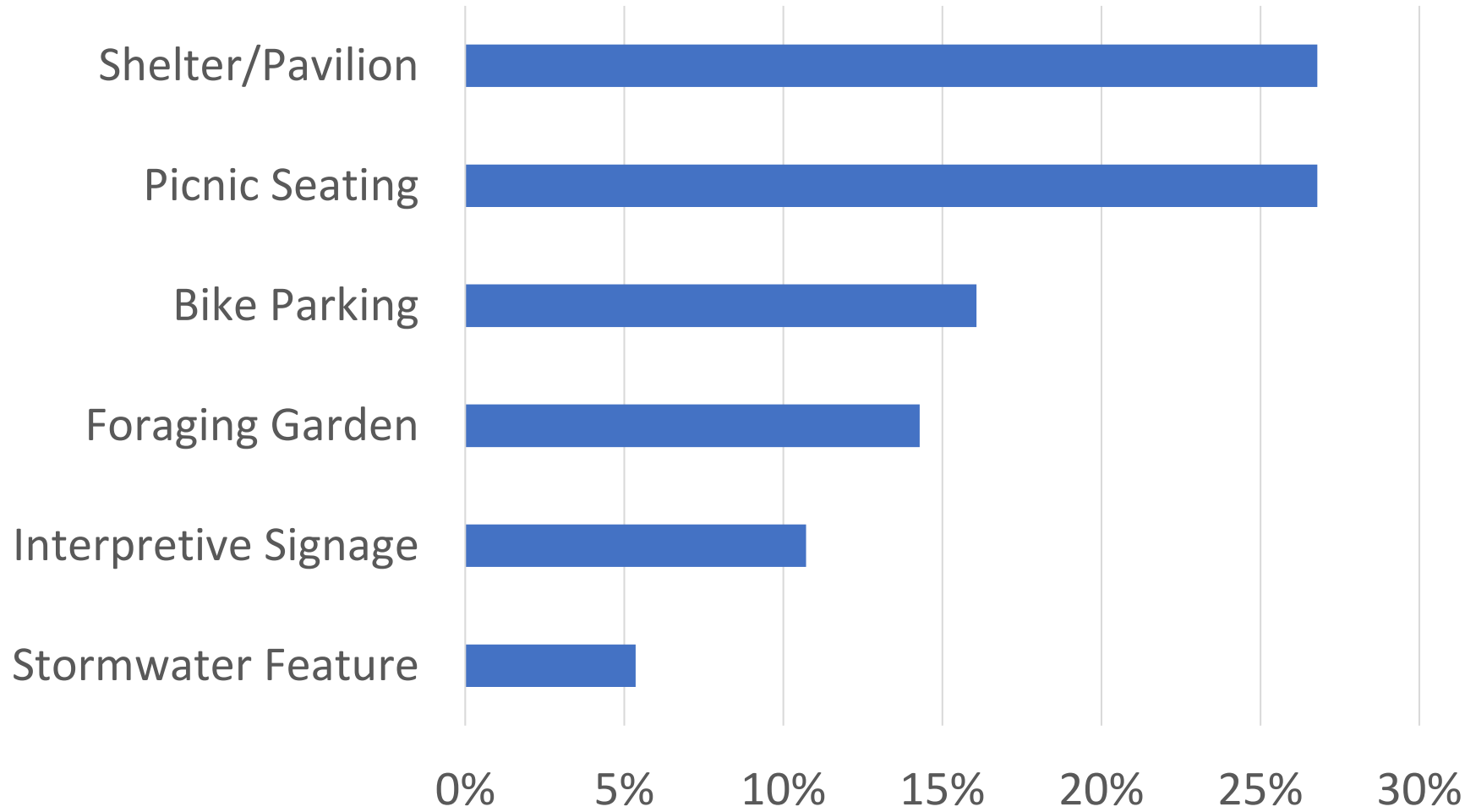
A decorative blue line starts from the left edge of the slide, goes down, and then turns right to become a horizontal line that spans the width of the slide. A solid blue circle is positioned at the top-left corner where the line turns.

Community Feedback

What Passive park amenities are most important to be included in the new park?



What infrastructure is most important to include?



A decorative blue line starts from the left edge of the slide, extends horizontally to the right, then turns 90 degrees downward, ending with a solid blue circle.

Conceptual Plan Options

EASTGATE NEIGHBORHOOD PARK | OPTION 1



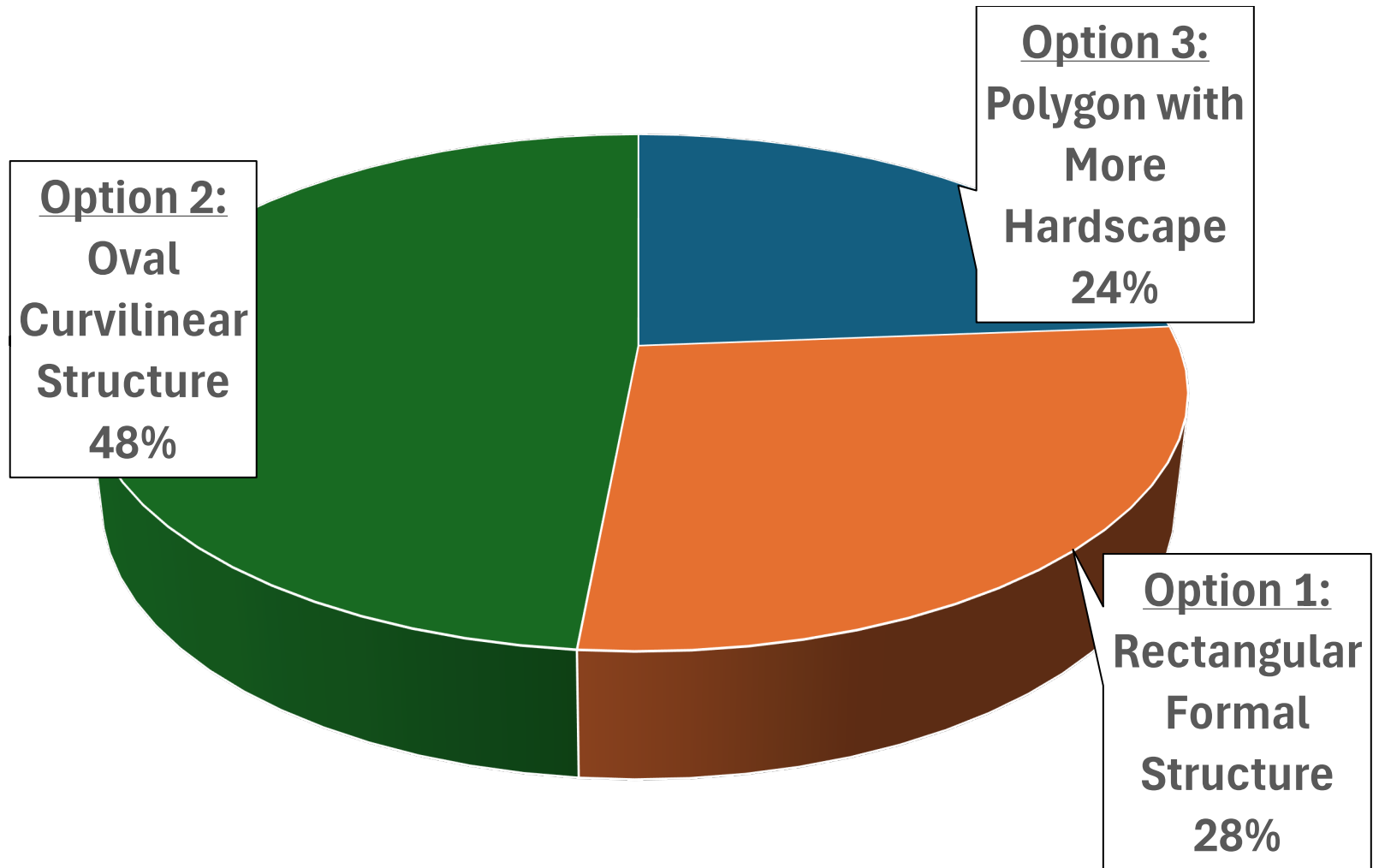
EASTGATE NEIGHBORHOOD PARK | OPTION 2



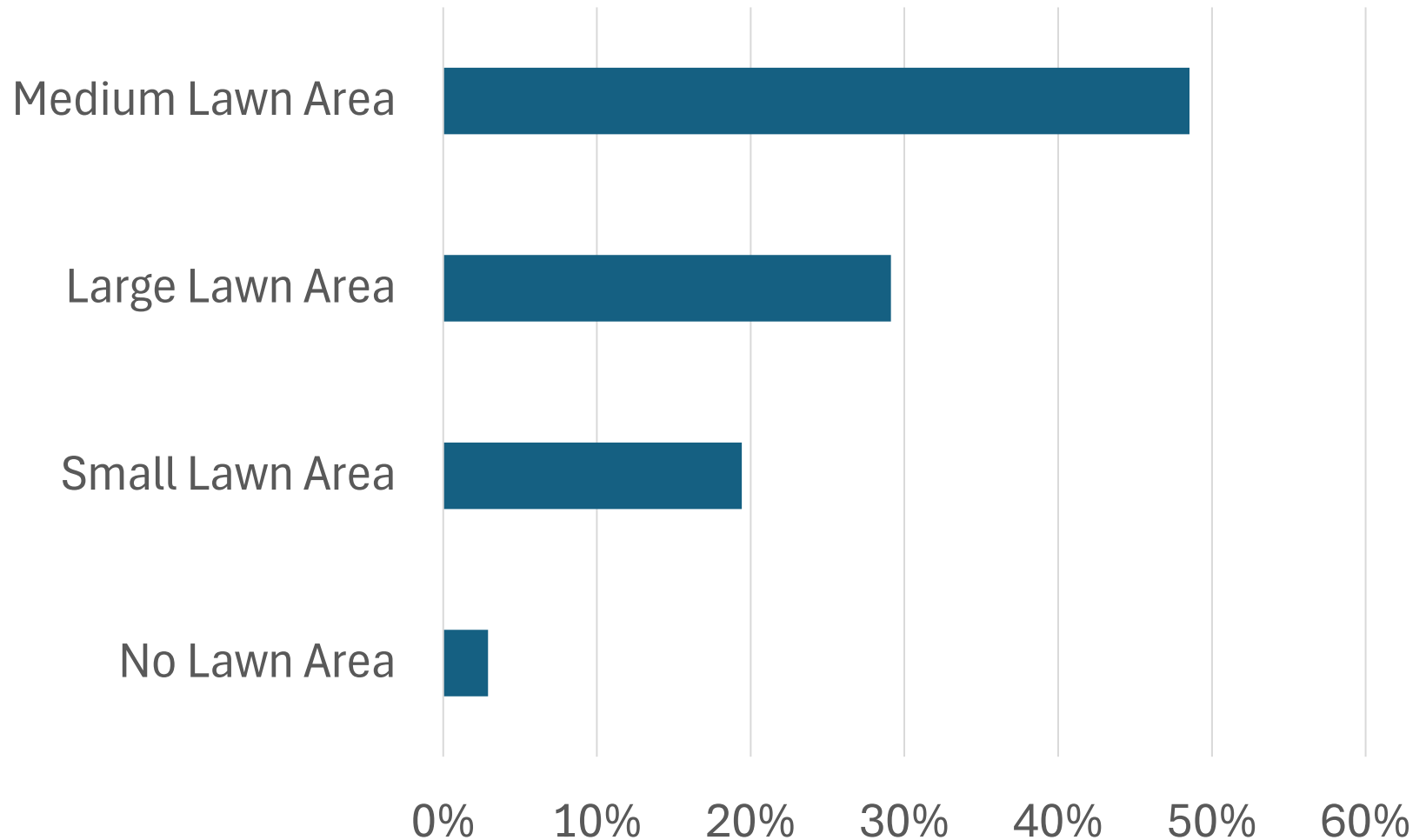
EASTGATE NEIGHBORHOOD PARK | OPTION 3



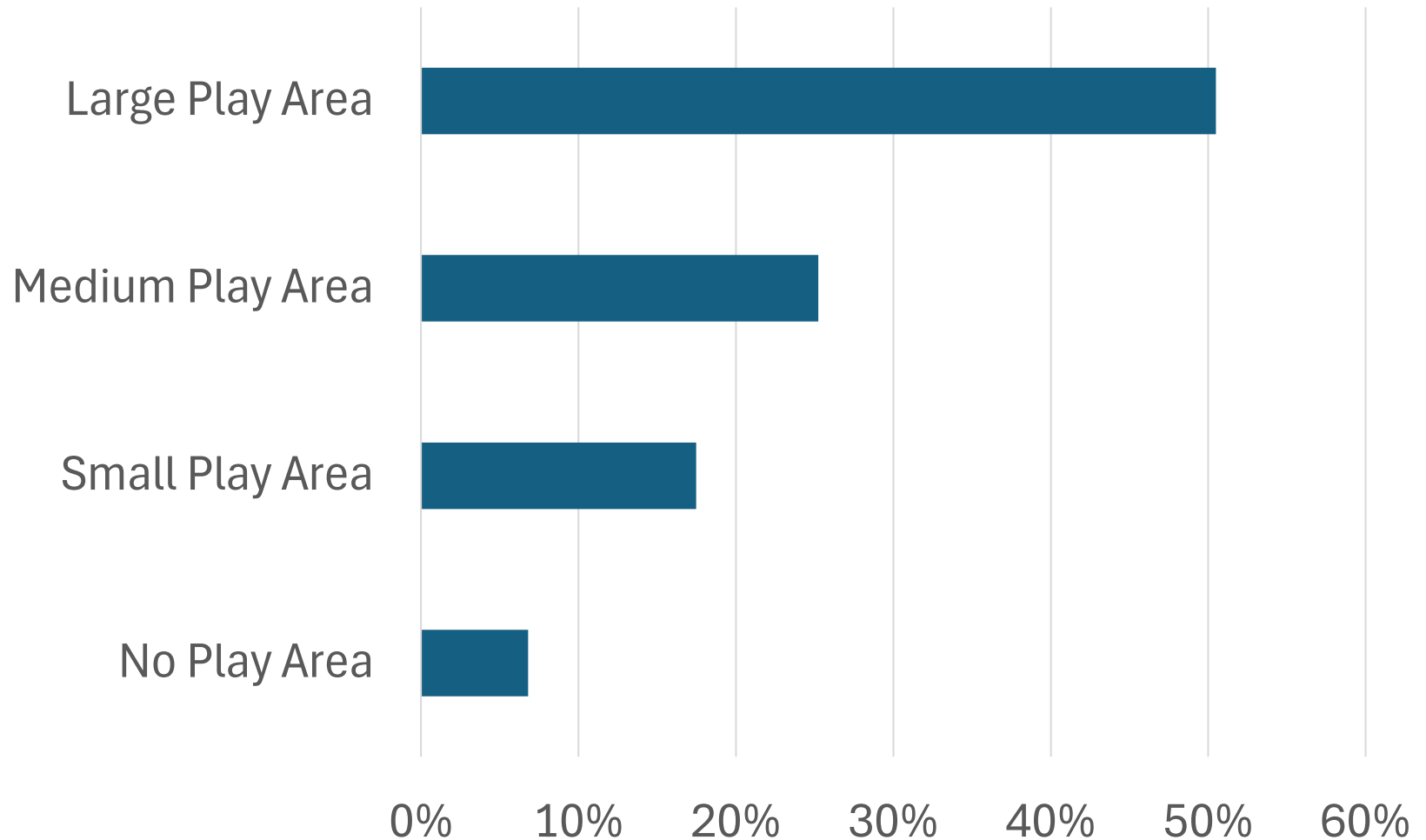
Which Park Option Do You Prefer?



What is your preferred open flexible lawn size?



What size of structured play are do you prefer most?



Next Steps

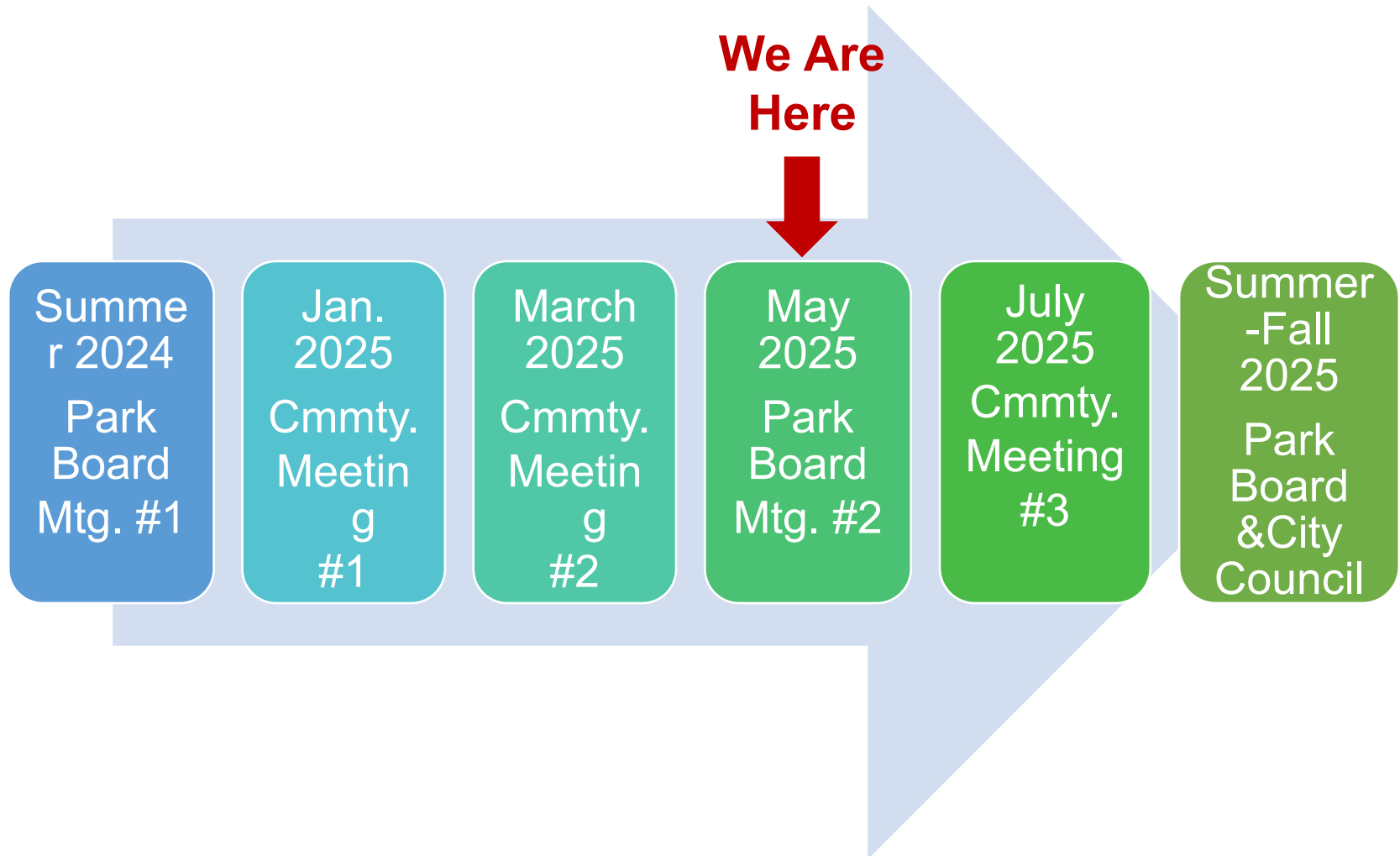


Park Naming Process

Council Resolution No. 10151 provides policies and procedures for naming public parks and recreation facilities based upon public input using the following criteria:

- a neighborhood or geographical identification;
- a natural or geographical feature;
- a historical figure or name of historical or cultural significance;
- an organization or individual that has made a significant contribution to the park system; and
- In the case of names for individuals or historic figures, consideration of diversity, equity and inclusion.

Estimated Planning Timeline



A decorative blue line starts from the left edge of the slide, goes down, and then turns right to become a horizontal line that spans the width of the slide. A solid blue circle is positioned at the top-left corner of this line.

Questions and Comments