

Sustainable Bellevue Plan Update

Phase II: Draft Strategies

Sofia Fall, Sustainability Coordinator
Community Development

July 16, 2025

Information & Discussion Only

Agenda

1. Objectives
2. Context & Timeline Update
3. Engagement to Date
4. High-Impact Actions
5. Draft actions and strategies
6. Discussion
7. Next Steps



Objectives

- Provide update to overall plan update process
- Share results from stakeholder engagement
- Receive feedback on draft actions



Context & Timeline Update

Sustainable Bellevue Plan Context

- Current Plan adopted by Council December 14, 2020
- Set to be updated every five years
- 2030 and 2050 Goals and Targets for community-wide actions
- Strategies and actions in six focus areas



ENERGY &
BUILDINGS



MOBILITY &
LAND USE



MATERIALS
& WASTE
MANAGEMENT



CLIMATE
CHANGE

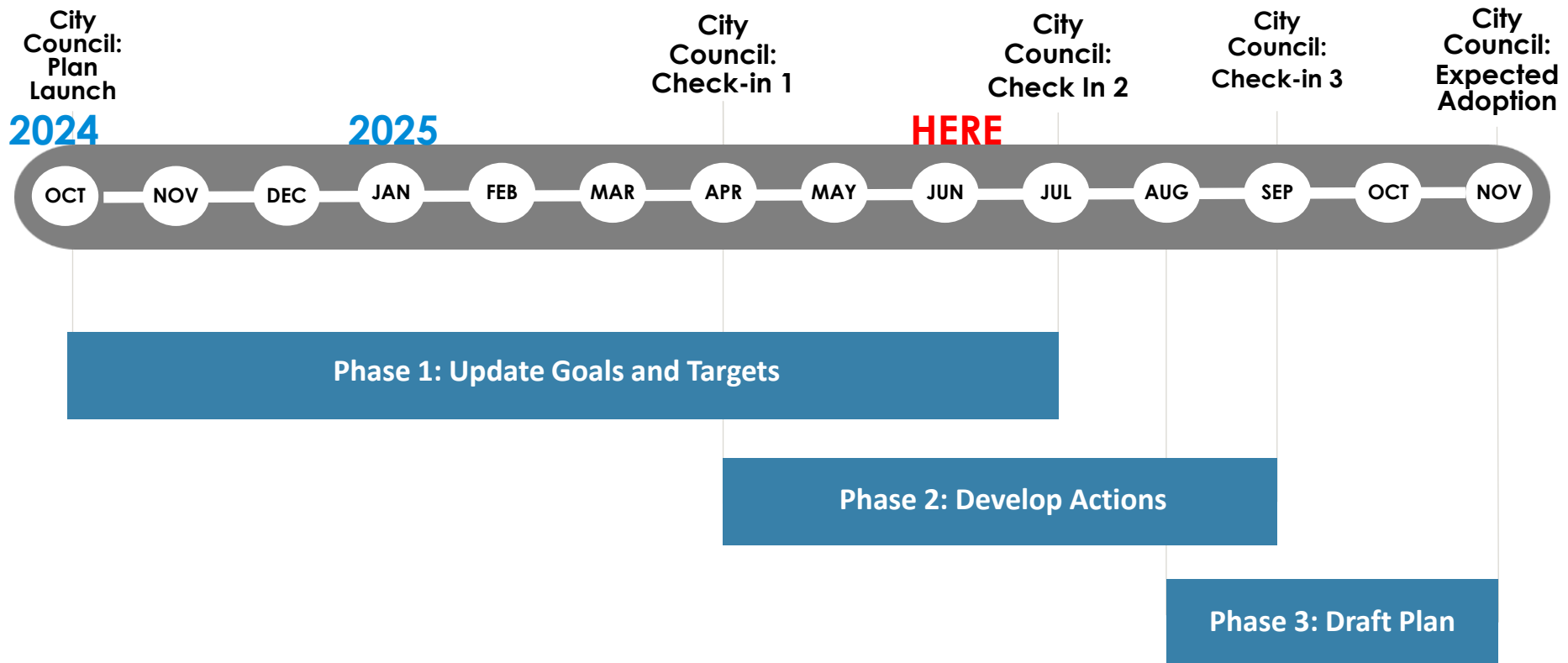


NATURAL
SYSTEMS



MUNICIPAL
OPERATIONS

Plan Update Timeline



Sustainable Bellevue Goals

ENERGY & BUILDINGS

- Transition to 100% Renewable Energy
- Reduce Overall Energy Use

MOBILITY & LAND USE

- Encourage Sustainable Commutes
- Reduce Vehicle Trips
- Locate Jobs and Housing Near Transit
- Transition to 100% Electric Vehicles

NATURAL SYSTEMS

- Realize "City in a Park" Vision
- Promote Healthy Streams
- Conserve Water

CLIMATE CHANGE

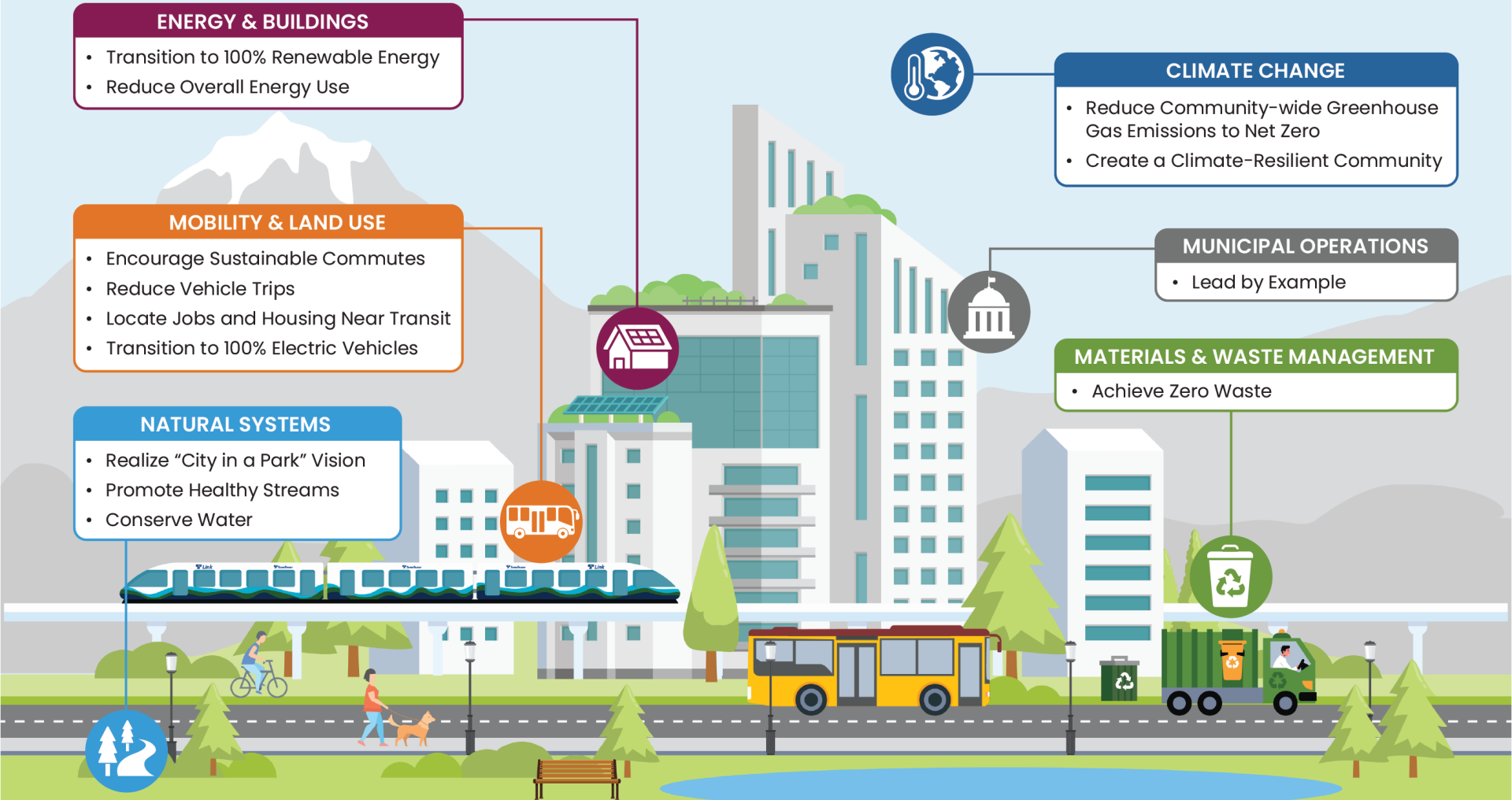
- Reduce Community-wide Greenhouse Gas Emissions to Net Zero
- Create a Climate-Resilient Community

MUNICIPAL OPERATIONS

- Lead by Example

MATERIALS & WASTE MANAGEMENT

- Achieve Zero Waste



Engagement to Date

Engagement Overview

- Phase I Engagement Reach:
 - 250+ Bellevue students
 - 110+ participants at in-person workshops or townhalls
 - 50+ community members at pop-up tabling events
 - 470 survey respondents (including 2 in Spanish and 46 in Simplified Chinese)
- Phase II Engagement to date:
 - EarthFest activities
 - Staff SME Workshops
 - Ongoing community engagement on actions



Key Engagement Takeaways

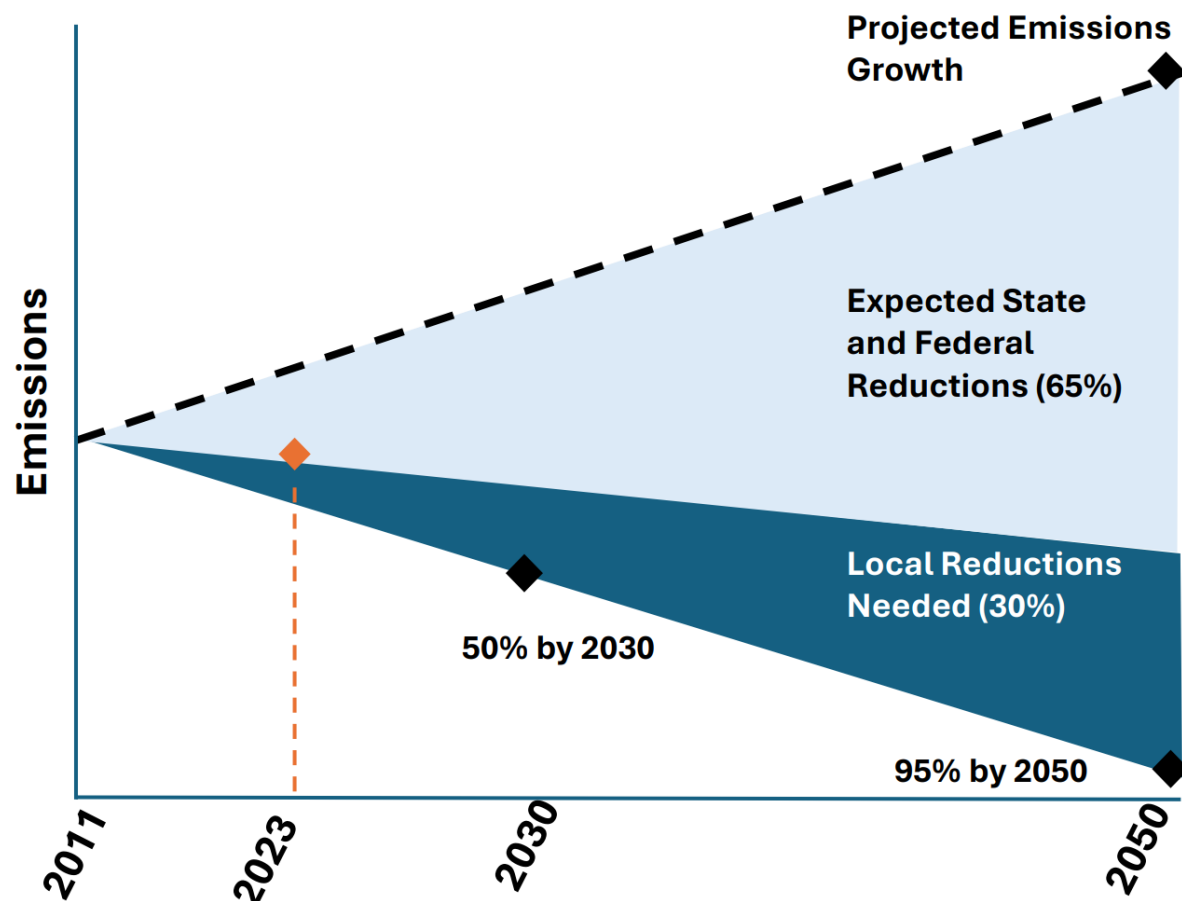
- 81% of Bellevue residents have already experienced climate impacts in Bellevue.
- 68% of respondents think the city should prioritize environmental initiatives even if they require significant investment.



High-Impact Actions

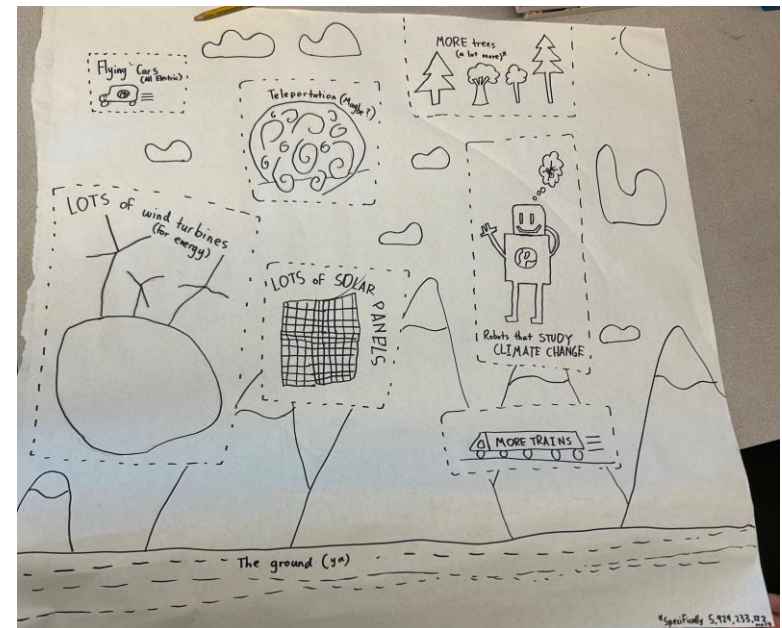
High Impact Context

- Approximately 30% of emissions reductions must come from local action



An action is high impact if...

- ✓ It substantially reduces GHG emissions to meet Bellevue's **50% reduction target**
- ✓ It lays a foundation to reduce GHG emissions to meet Bellevue's **carbon neutrality targets**
- ✓ It meaningfully enhances **resilience** to climate hazards



Draft Actions and Strategies

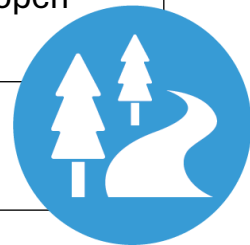
Draft Actions: Climate Change

Strategy	Community Resilience: <i>Enhance the Bellevue community's resilience to climate impacts and extreme weather to protect community safety, health, and quality of life.</i>
Action	Pilot a resilience hub at a city or community facility serving most-vulnerable populations.



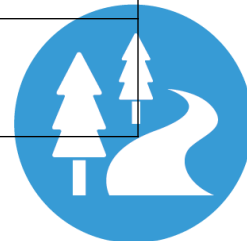
Draft Actions: Natural Systems

Strategy	<i>Sustainable Tree Canopy and Open Spaces.</i> Prioritize sustainability and climate resilience in managing tree canopy and natural areas to promote healthy urban forests and ecosystems.
Action	Create a citywide list of recommended tree species for planting in the right-of-way and on public and private property that meets current climate conditions and is updated as science evolves.
Action	Expand and maintain tree canopy, prioritizing low canopy and high island heat areas.
Action	Explore need for a city arborist or urban forester resource.
Action	Continue targeted land acquisitions to support walkable access to parks and open spaces.
Action	Preserve forest health on privately managed Native Growth Protection Areas.



Draft Actions: Natural Systems

Strategy	<i>Electric Yardcare Equipment.</i> Assess options for transitioning to electric yardcare equipment to reduce emissions and reduce air and noise pollution.
Action	Monitor electric lawn equipment technology development to consider a policy to transition away from the use of gas-powered yard equipment where appropriate.
Action	Pilot programs to mitigate pollution from electric yard equipment such as buy-back programs, education, and demonstrations of city operations.
Strategy	<i>Stormwater Management.</i> Enhance new and existing stormwater infrastructure with low-impact design to improve water quality and support stream health.
Action	Develop a strategy and identify resources for stream daylighting in BelRed in coordination with ongoing planning efforts.
Action	Evaluate strategies for incentivizing green stormwater infrastructure on existing properties.



Draft Actions: Natural Systems

Strategy	<i>Reduce Water Use.</i> <i>Reduce communitywide per capita water use to enhance resilience to drought.</i>
Action	Partner with Cascade Water Alliance to create a pilot drought preparedness public education program.
Action	Create a pilot program to support community low-water and sustainable landscaping practices.



Discussion

Discussion

- Does the Board have feedback on the draft actions related to natural systems and resilience?
- How do you view the potential for the 2026-2030 Sustainable Bellevue Plan to advance existing Parks-related priorities, investments, or actions?
- Are there other big steps the city could evaluate to meet our 2030 and 2050 climate and sustainability goals?



Thank You

Sofia Fall
Sustainability Coordinator
Natural Systems Focus Area Lead
sfall@bellevuewa.gov