



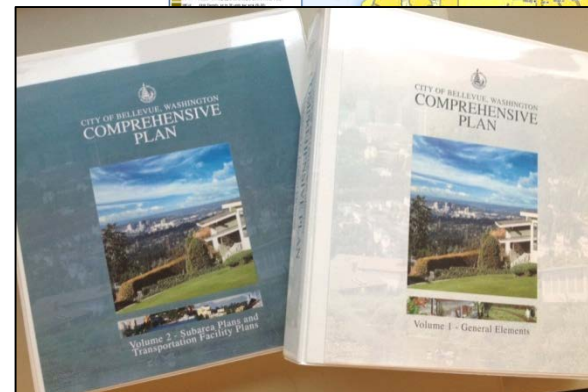
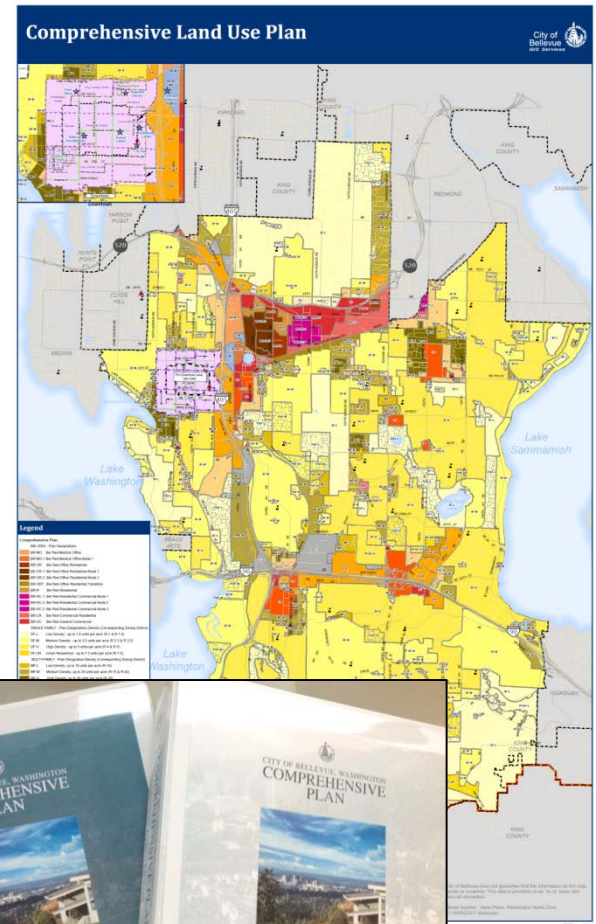
FORMINGour**FUTURE**

COMPREHENSIVE PLAN UPDATE

Bellevue City Council
Study Session
February 2, 2015

Tonight's Study Session

- Project overview
- Progress since 9/15 update
- Recent review issues
- Upcoming public review draft release
- Next steps- schedule



Project Objectives

- Update the plan so that it:
 - Fully captures the community's vision
 - Remains relevant to the community, decision makers and staff
 - Comprehensively addresses long-term needs of the community, economy and environment
 - Provides a strong policy foundation for City decisions and actions, especially related to infrastructure investments, neighborhoods, land use, environment and economic development
 - Includes up to date information about the community
 - Is consistent with state law, regional plans and court decisions
- A key objective of the update is to make the whole plan more accessible and usable so that it remains an effective tool

Schedule

Feb 11
Public
release

Feb 25
Joint
meeting &
open
house

Feb 26
2nd open
house

On-line
open
house

Mar 4
PC public
hearing

**Mar 11, 18,
25**
PC review,
rec'd

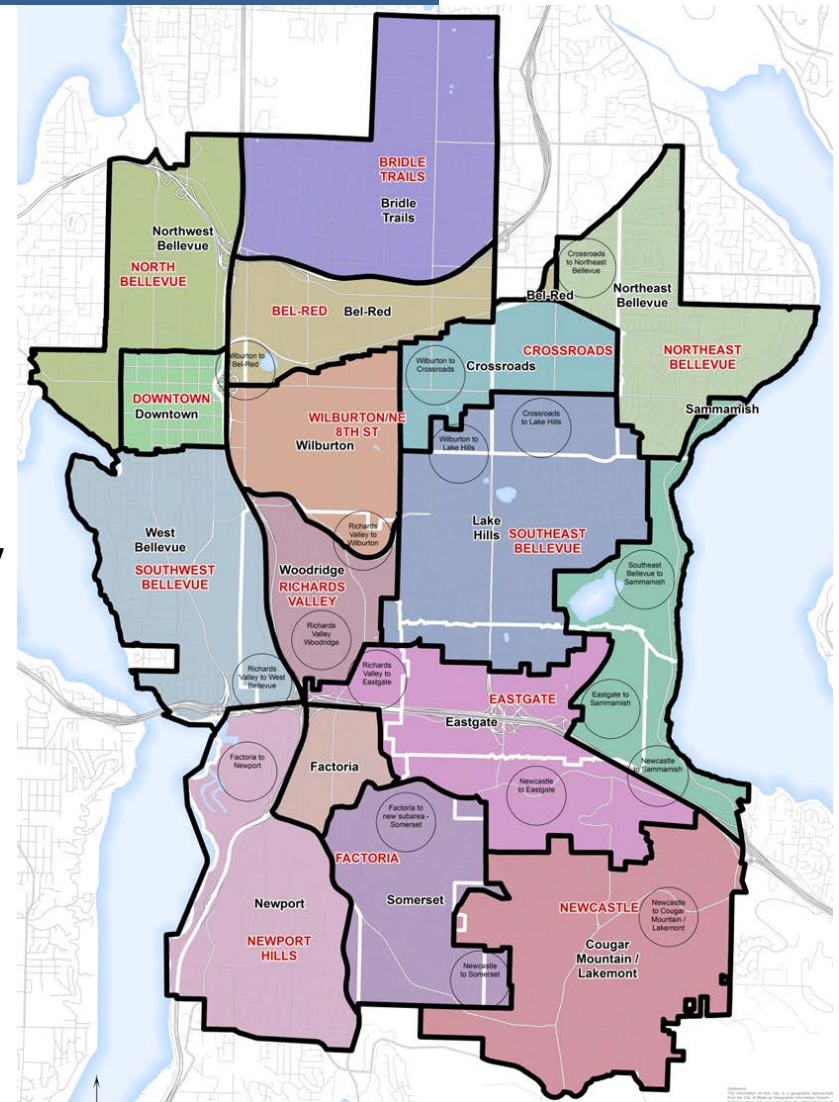
**April 6, 13,
27; May 11**
Council
review

June 15
Council action
(ahead of
state
deadline)

Recent Review Items

Draft Neighborhoods Element

- Council question at September study session
- Developed draft and reviewed with Planning Commission
- Reinforces the importance of quality neighborhoods
- Protect neighborhood character as city evolves
- Frames how Neighborhood (subarea) Plans are updated and relate to overall Comprehensive Plan
- Provides central location and cross-reference to other policies



Comprehensive Plan Vision

- Foundational to Comprehensive Plan
 - Ensures plan components are working together
- Aspirational, based on community values
- Updated to ensure Comprehensive Plan Vision and Council Vision are well aligned
- New approach strengthens linkages between Vision and rest of Plan
 - Largely a compilation of vision statements for all 12 Comp Plan elements



Comprehensive Plan Vision

BELLEVUE 2035—WHERE YOU WANT TO BE

Bellevue embraces the future while respecting our past.

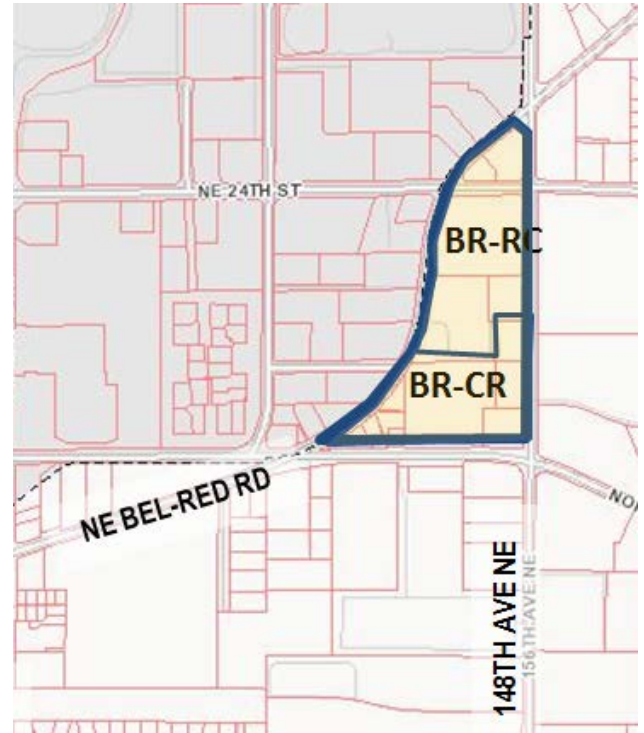
In 2035 Bellevue is a vibrant international center for innovation and commerce with safe, attractive neighborhoods that feature some of America’s finest schools. Most of Bellevue’s jobs and many of its new housing opportunities are found Downtown with its thriving arts scene, and in new business/residential centers at Bel-Red, Wilburton, and Eastgate, which feature their own unique cultural amenities and urban landscapes. Our neighborhoods epitomize Bellevue’s reputation as a “City in a Park” with visually breathtaking vistas, viewpoints, and recreation areas. Despite the city’s growth, they remain connected to one another, offering diverse housing choices, gathering spaces, and local and regional commercial services. Bellevue’s people – its ultimate strength - define both the city and their neighborhood.

This Comprehensive Plan Vision will be realized by the entire City organization, in concert with the Bellevue community and regional partners. The Comprehensive Plan provides City policy direction on a range of issues, from the City’s growth strategy to environmental protection, to provision of utilities, parks, and other services. Further detail is found in the Vision statement for each Element, or chapter, of the Plan. These occur at the beginning of each element and are set forth below in their entirety.



Subarea Boundary Issues

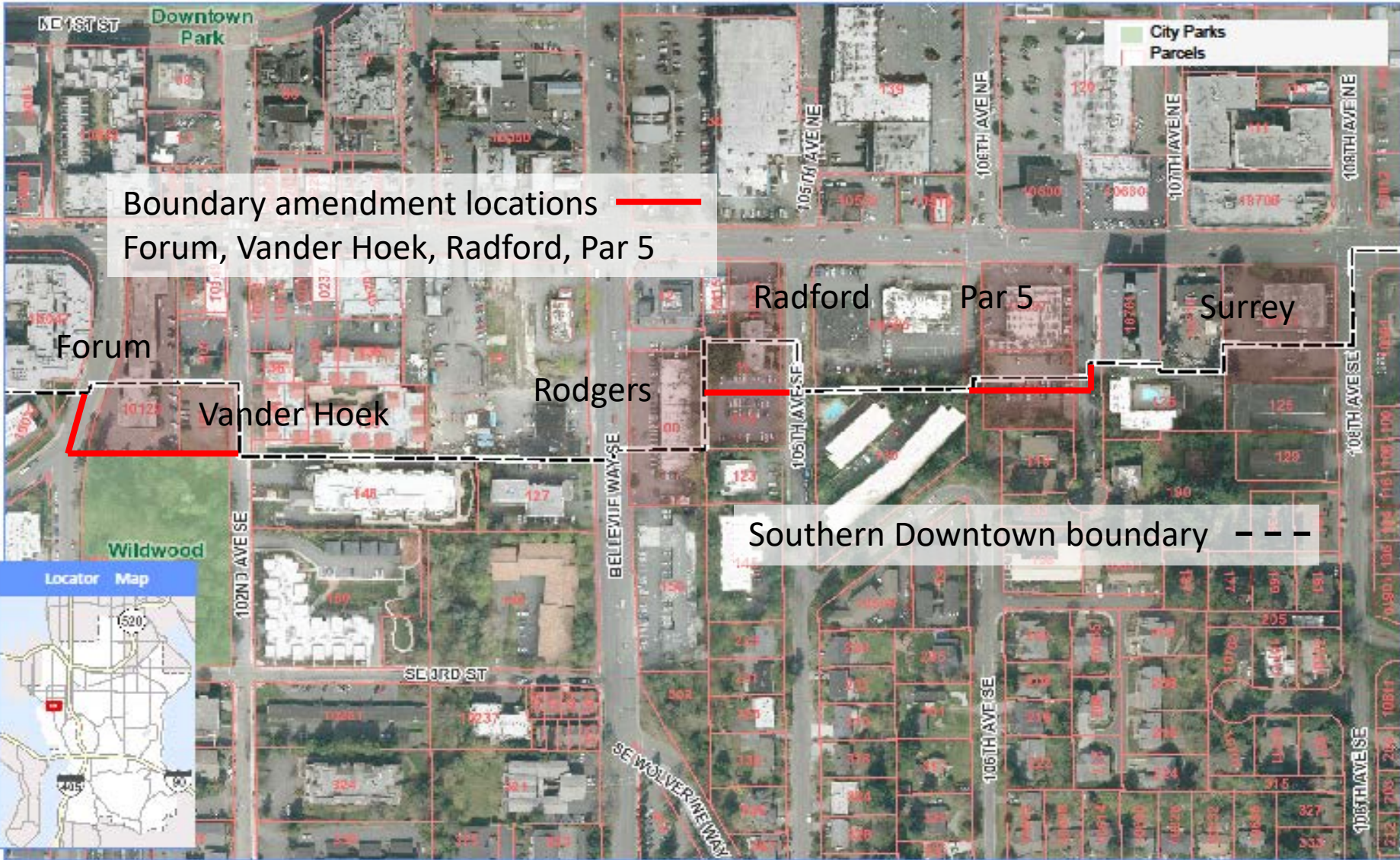
- **Crossroad/ Bel-Red Boundary**
 - Members of the community sought change to restore Crossroads boundary of triangle area and previous zoning
 - Analyzed multiple scenarios
 - Change boundary & zoning
 - Change boundary; new zoning
 - Change boundary; keep zoning
 - Keep boundary and zoning
 - Planning Commission current direction is to maintain existing boundary



Subarea Boundary Issues

- **South Downtown Boundary**
 - Unlike west, north and east boundaries
 - Irregular edge with split parcels
 - Existing policy to maintain boundary to prevent the spread of Downtown into adjacent residential neighborhoods
 - Reviewed each parcel in detail
 - 3 adjustments recommended





Southern Boundary recommendations



Updates to Existing Elements

Utilities Element

- Deployment of new power facilities
 - New policy focuses on funding tools to enable full mitigation
- Undergrounding of existing power facilities
 - New policy supports neighborhood efforts
- Support high speed internet access
 - Change would allow new aerial fiber/broadband where existing electrical distribution is aerial
- Regional utilities
- Wireless communication facilities
 - Recognize need for code updates to balance impacts with service needs



Capital Facilities Element

- Aging Infrastructure
- Capital Improvement Program
 - Acknowledge CIP as the city's primary infrastructure planning and funding tool
- Functional Plans
 - Create clear link to facility system plans
- Essential Public Facilities
 - Recognize now-adopted code standards



Environment Element

New policy additions

- Tree canopy restoration
- Partnerships for stream habitat and other restoration projects
- Life cycle management of resources
- Greener buildings and infrastructure
- Mitigation of green house gas emissions



NPDES Low Impact Development

- Synchronize policy review required under the National Pollutant Discharge Elimination System (NPDES) with update
- Incorporate Low Impact Development principles in new & amended policies to support NPDES requirements



Citizen Engagement Element

- Ensures community involvement in planning & decision making
- Two new policies
 - Master planning of large public projects
 - New and emerging technologies for citizen engagement



Housing Element

Follow up from previous reviews

- Added policy encouraging housing for seniors



Urban Design and the Arts

- Proposed new Arts & Culture subsection
- 3 categories of urban design street treatment
 - City Boulevards
 - Scenic Boulevards
 - Shopping Streets
- 3 types of intersection treatments
 - Key City Entry Points
 - Neighborhood Identity Points
 - Designated Intersections



Next steps

- 2/11 Release of complete policy draft for next round of public review
- 2/25 Joint meeting of boards & commissions; open house
- Public outreach
 - On-line and traditional open houses
 - Print & social media
 - Presentations to Youth Link Board, Network on Aging, and other groups
- Planning Commission review and deliberations



Schedule

- Feb. 11 Release of public review draft Comp Plan
- Feb. 25 Open house
Joint boards and commissions meeting
- Mar. 4 Public hearing before the Planning Commission
- Apr. 6 PC Transmittal to Council
- Apr/May Council Study Sessions
- Jun. 15 Potential Council action