



**King County**

Department of  
Natural Resources and Parks  
Solid Waste Division

Waste  
Prevention

Resource  
Recovery

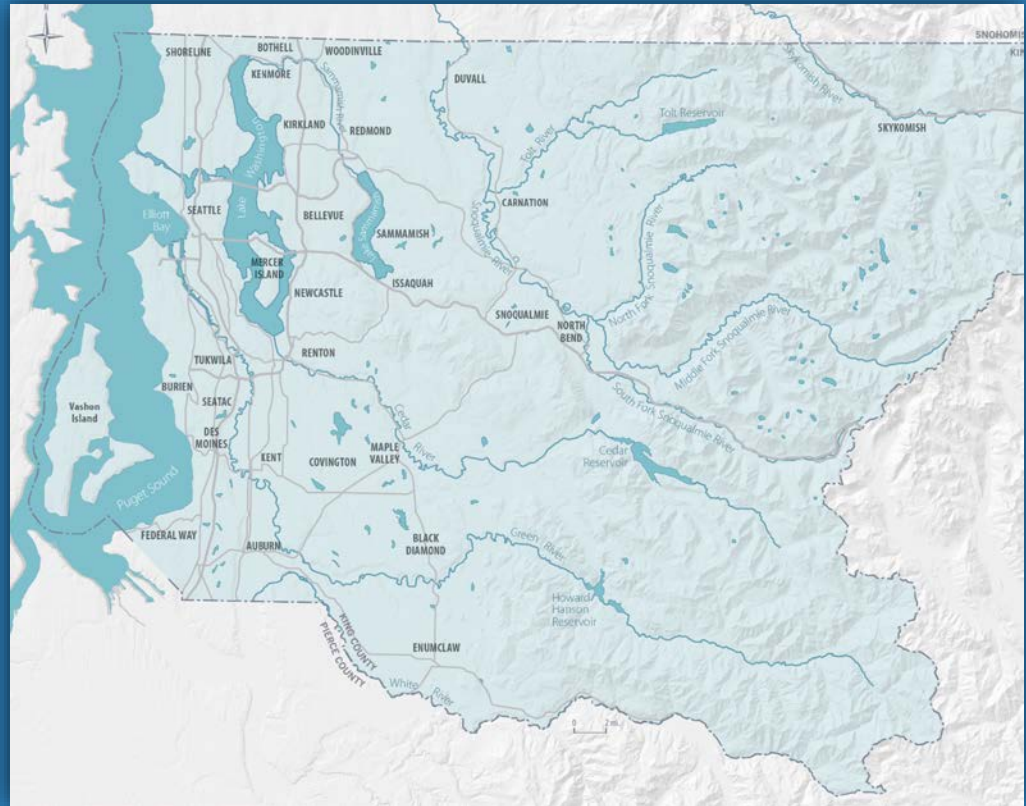
Waste  
Disposal

# 2019 Comprehensive Solid Waste Management Plan

# A Plan for King County's Regional System

- 2,132 square miles
- King County and 37 cities
- 1.5 million residents\*
- 931,000 tons of garbage\*

\*2017

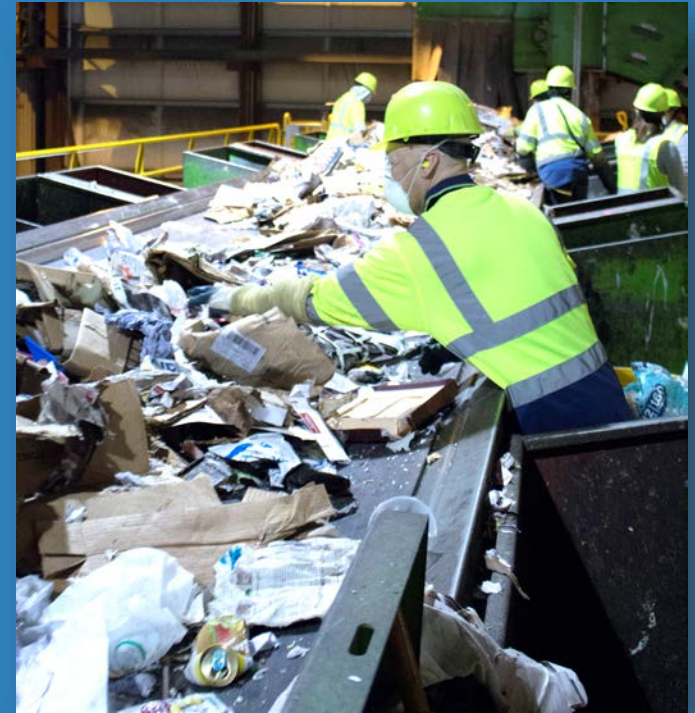


**King County**

Department of  
Natural Resources and Parks  
Solid Waste Division

# Public/Private Partnership

- **King County**
  - Transfer stations
  - Landfill
- **Cities**
  - Provide/contract for curbside collection
- **Private Companies**
  - Curbside collection
  - Materials recovery facilities (MRFs)
- **County/Cities/Private**
  - Promote recycling and sustainability



# Key Policy Recommendations



Disposal



Transfer  
Services



Recycling

# Recycling: Menu of Actions to Reach 70%

- Aspirational goal of moving recycling from 54% to 70%
- Menu of actions lets cities tailor approaches to their needs while working toward more unified regional approaches



# Transfer: Continue Modernizing Facilities

- Finish station modernization including a new NE facility
- Benefits
  - Improved customer convenience
  - Faster unloading
  - Expanded recycling services
  - Garbage compaction
  - Sustainable building design and operation
  - Equitable service levels



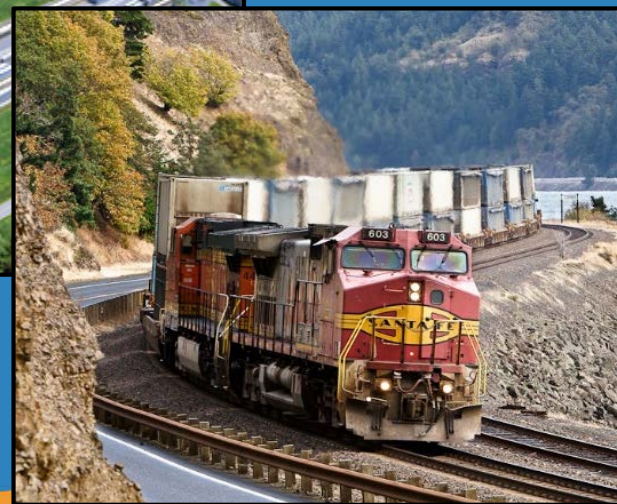
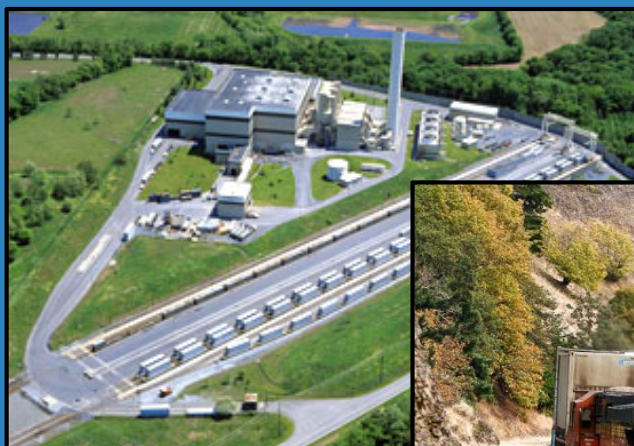
# Disposal: Further Develop Cedar Hills Landfill

- Maximize capacity within existing landfill footprint
- **Benefits**
  - Lowest cost per ton
  - Lowest greenhouse gases
  - Manages waste locally
  - Provides time to plan for next disposal option after Cedar Hills is full
- **Work must begin this year to have new capacity ready in time**



# Next Plan Update Will Identify Post-Cedar Hills Disposal Method

- Start discussion well before the 5-year update cycle
- Options
  - Waste-to-Energy (mass burn)
  - Waste Export by Rail
  - Other emerging technologies



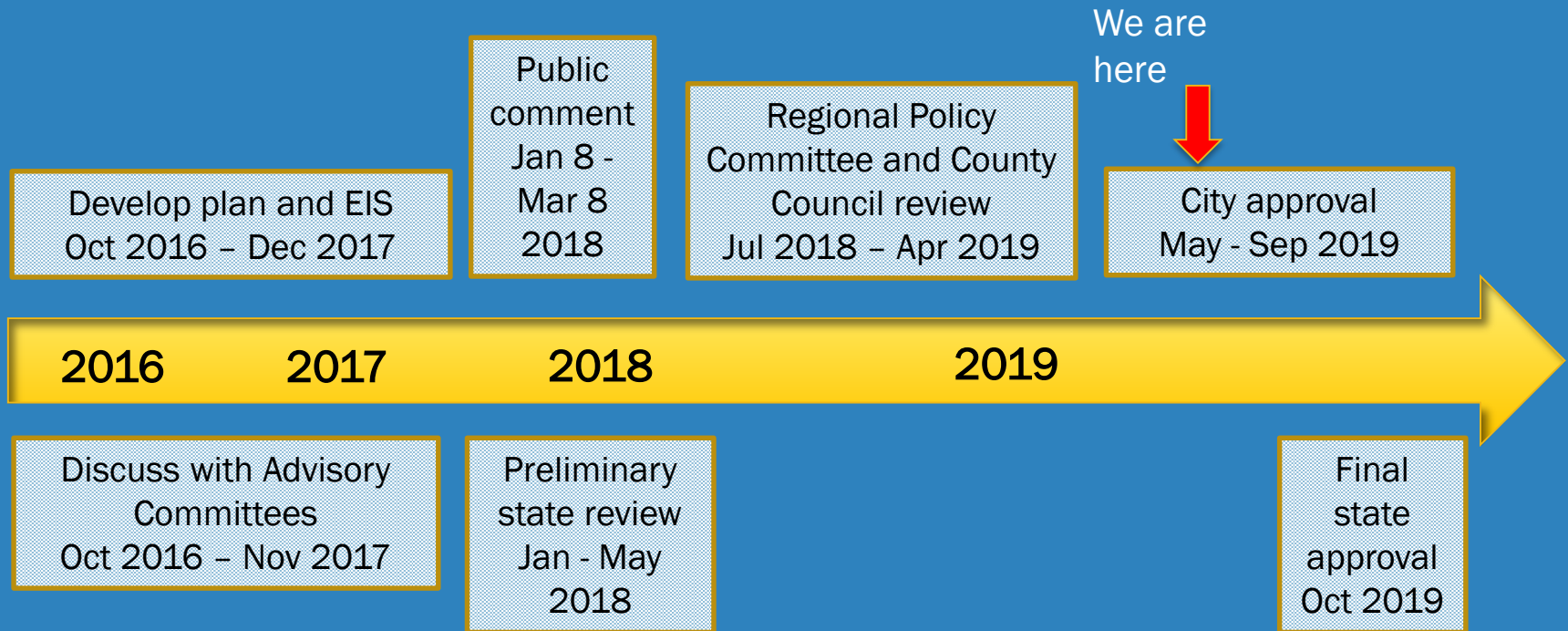


# RPC & County Council Amendments Strengthen The Plan

- Use of the buffer
- Bird management
- Top lift best practices
- Height of Areas 5, 6, and 7
- Work plan for post-Cedar Hills disposal
- Explore county road mitigation
- Send annual landfill report to county council



# Steps in Plan Approval



# City Approval of the Plan

- Governed by interlocal agreements
- City legislation in a 120 day period
- Plan is approved if approved by cities representing  $\geq 75\%$  of the population of cities that act within 120 days
- After city approval, Department of Ecology gives final approval within 45 days





**King County**  
Department of  
Natural Resources and Parks  
**Solid Waste Division**

<i>Waste</i> <b>Prevention</b>	<i>Resource</i> <b>Recovery</b>	<i>Waste</i> <b>Disposal</b>
-----------------------------------	------------------------------------	---------------------------------

King Street Center  
201 South Jackson Street, Suite 701  
Seattle, WA 98104-3855  
206-477-4466  
711 TTY Relay  
[your.kingcounty.gov/solidwaste](http://your.kingcounty.gov/solidwaste)