



# **Downtown Park NE Gateway Signature Artwork**

Paul Manfredi | Bellevue Arts Commission  
Jesse Canedo | Community Development  
February 3, 2020



# Information Only

---

Tonight's study session will provide an update on the signature art installation being developed for the new Downtown Park NE Gateway.

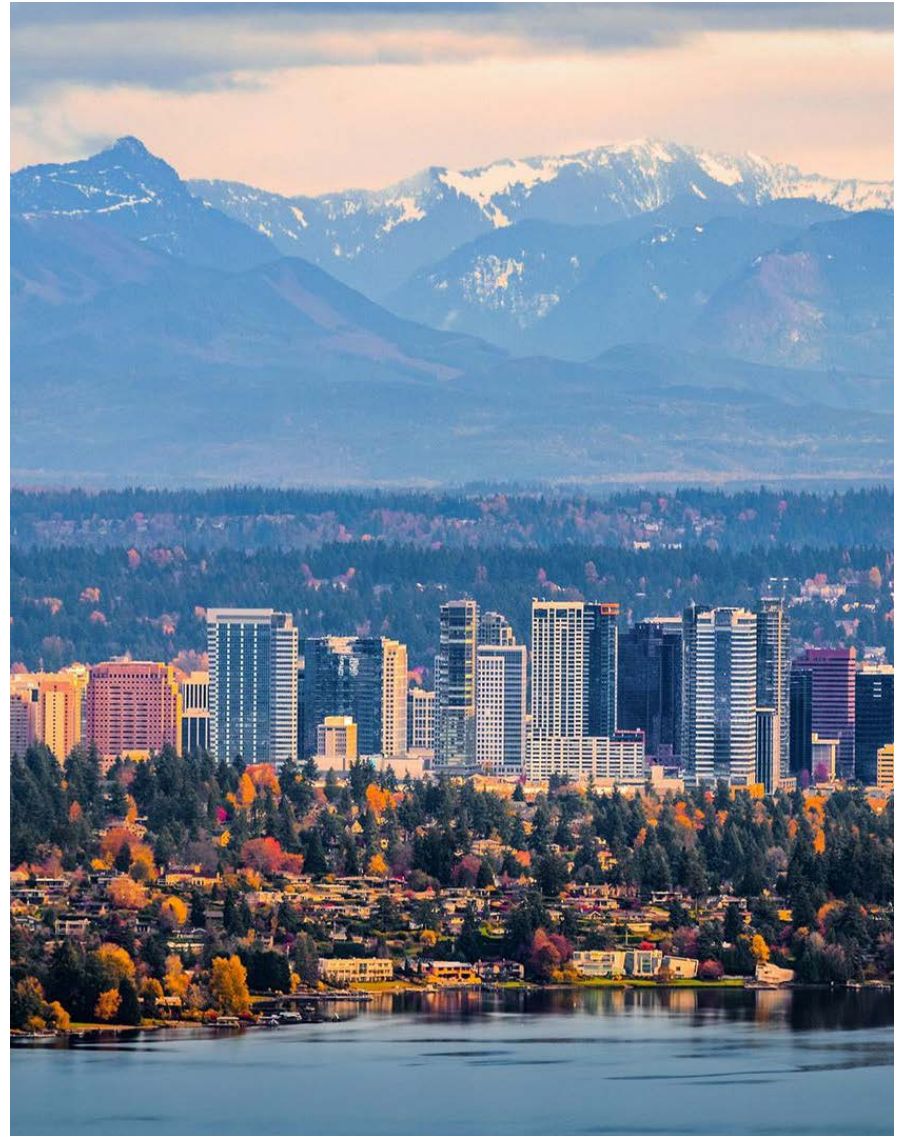




# Agenda

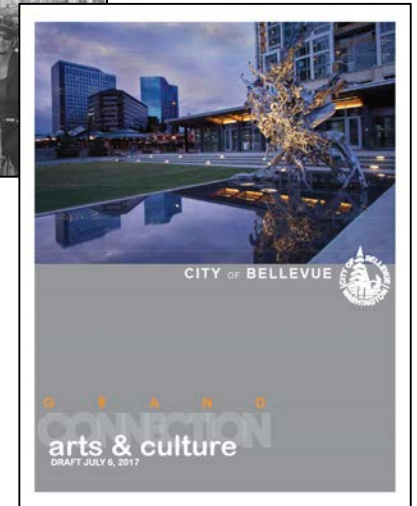
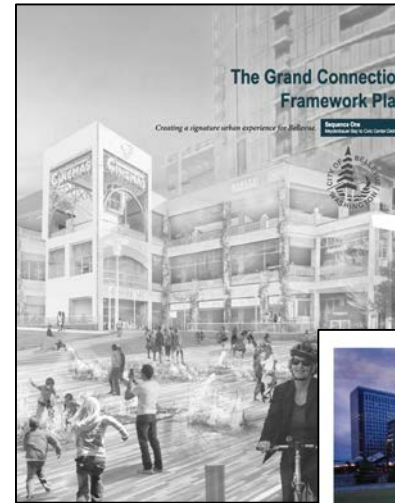
---

1. Policy and Background
2. Grand Connection Vision
3. Selection Process
4. Design
5. Next steps
6. Questions



# Policy Background

- **2015:** Council approves *Grand Connection Framework Plan* and *Arts & Cultural Plan*, expressing vision for a bold, strategic public art investments in the core of downtown Bellevue.
- **2017-2018:** Council voiced support for *Destination Development Plan* and approved *Downtown Livability* policy and code amendments, which increase policy support for expansion of Bellevue's public art collection.



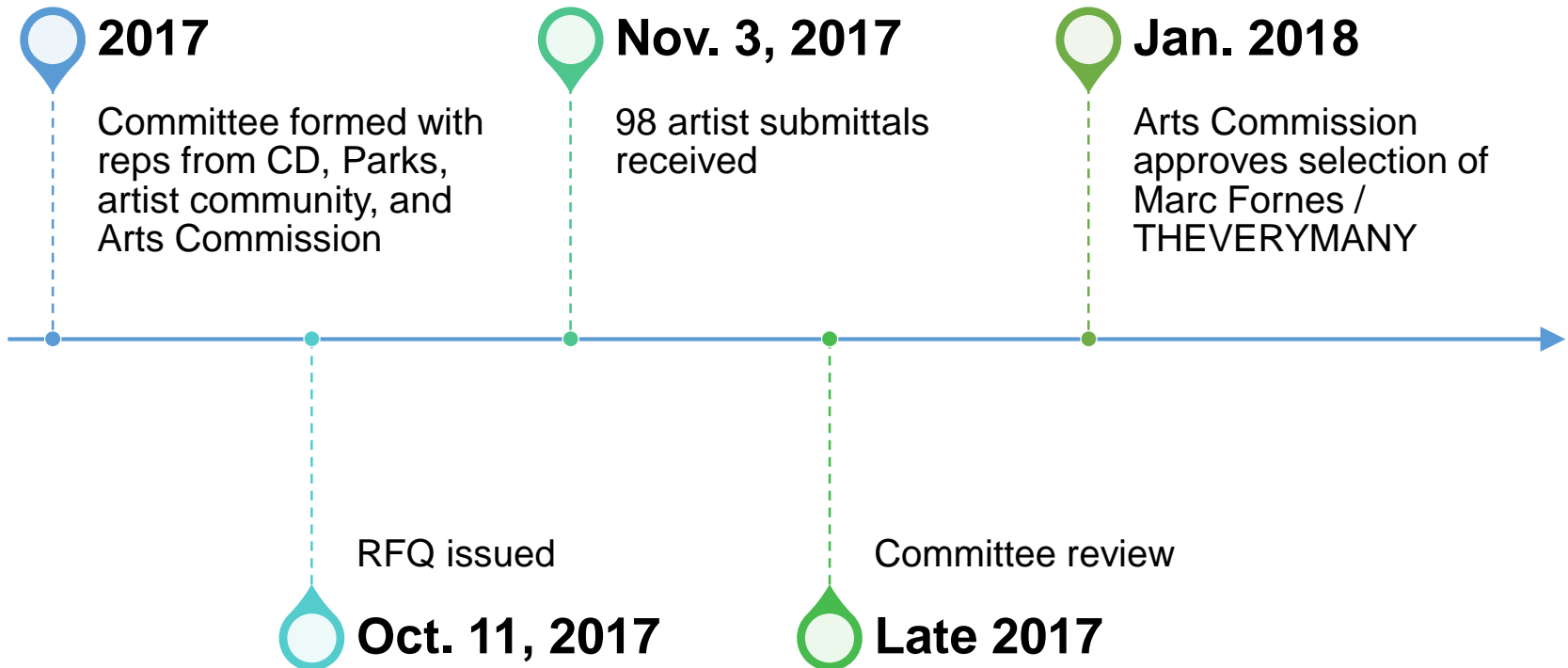
# Grand Connection & Public Art

- Downtown Park NE Gateway identified in Framework Plan as one of 14 key implementation strategies for the corridor.
- **Bellevue Way and NE 4<sup>th</sup> St** identified as an opportunity for public art to serve as a “significant entrance to the park” and a “recognizable landmark.”
  - On an average weekday, ~35,000 vehicles pass through this intersection, with more for holidays and special events like ArtsFair.
  - Key opportunity to better draw people into Downtown Park.



*Grand Connection – Arts & Cultural Plan*

# Artist Selection Process



# Marc Fornes / THEVERYMANY

---

*Minima | Maxima (Kazakhstan)*



*Zephyr (Texas, USA)*



*Pleated Inflation (France)*

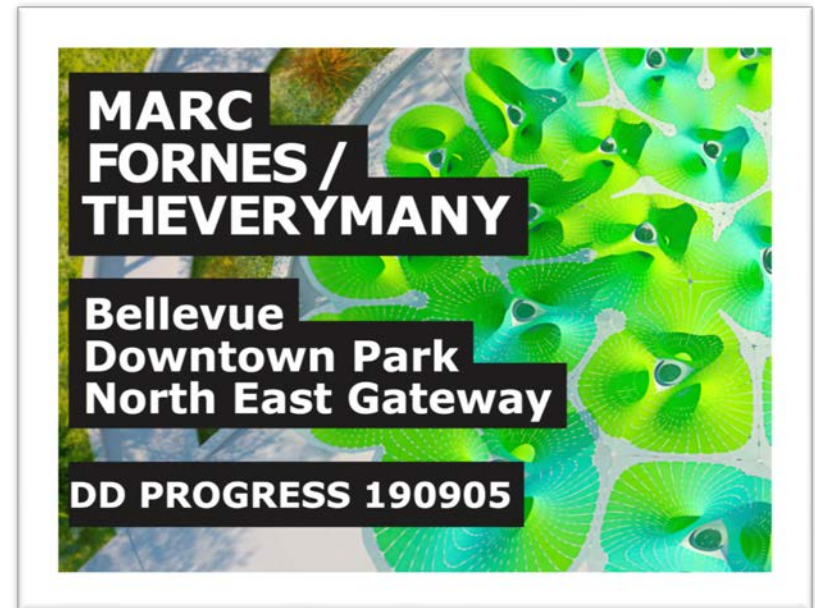


*Vaunted Willow (Canada)*

# Design Process

---

- Design work **deeply integrated** with broader Parks planning for the Downtown Park NE Gateway
- Artwork design is **completely unique to Bellevue** and this site
- **June 2019:** Concept designs presented to Arts and Park & Community Services Commissions
- **September 2019:** Arts Commission approves final design
- **Late 2019:** Contract negotiations







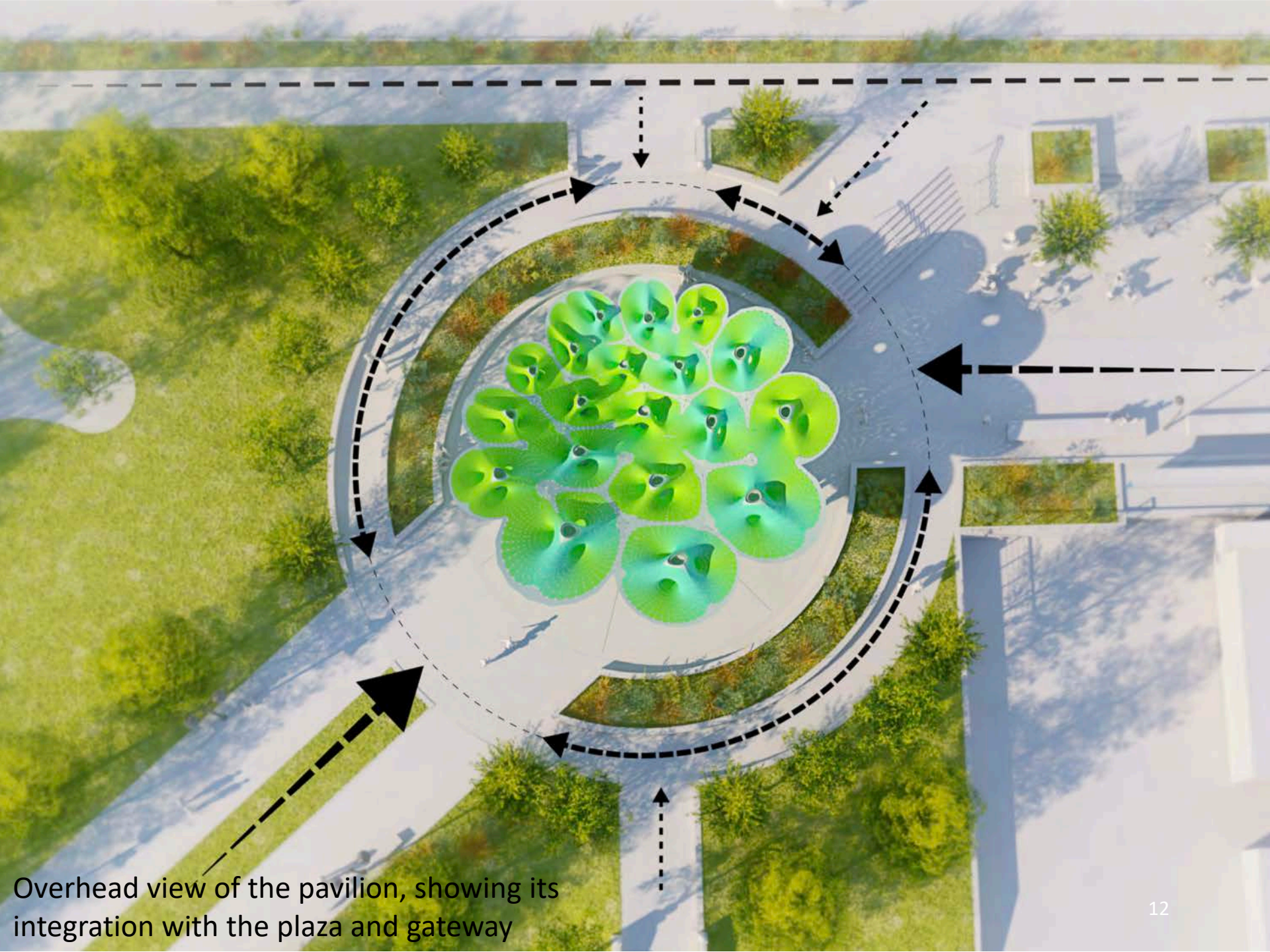
Looking northwest from inside Downtown Park toward the intersection of Bellevue Way and NE 4th Street. Lincoln Square South in the background.



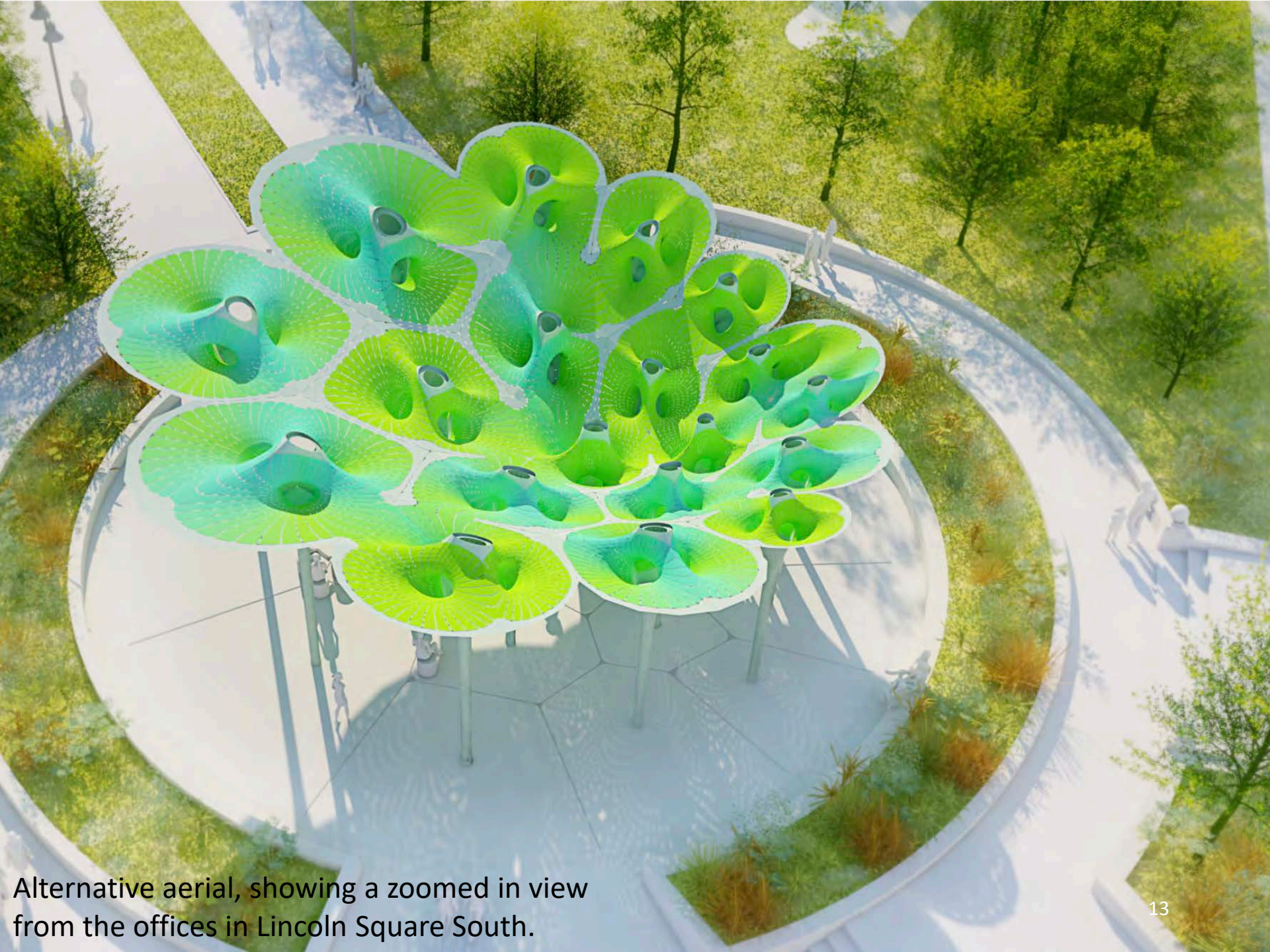
Closer interior view showing the perforated canopies and integrated seating.



Looking southwest from the corner of Bellevue Way and NE 4th Street toward the pavilion. Downtown Park is in the background.



Overhead view of the pavilion, showing its integration with the plaza and gateway



Alternative aerial, showing a zoomed in view from the offices in Lincoln Square South.

# Why here, why now?

---

- Early implementation for the Grand Connection
- Design deeply integrated with Downtown Park and **completely unique** to Bellevue.
- Most iconic public art commission **since the Root at City Hall** .
- Aligns with vision of downtown Bellevue as a world-class destination for residents, visitors, and businesses
  - Landmark element for visitors
  - Connected plaza and event/performance space for residents and downtown employees



# Next Steps

---

- **February 2019:** Contract with Marc Fornes / THEVERYMANY in the amount of \$866,700 comes to Council on Consent agenda.
- **2020:** Construction of park plaza, fabrication of artwork, and installation
- **Late Q1 2021:** Construction and installation substantially complete.
- **Early Q2 2021:** Grand opening celebration, including presentation by the artist.





# Information Only

---

Tonight's study session will provide an update on the signature art installation being developed for the new Downtown Park NE Gateway.







# **Downtown Park NE Gateway Signature Artwork**

Paul Manfredi | Bellevue Arts Commission  
Jesse Canedo | Community Development  
February 3, 2020