



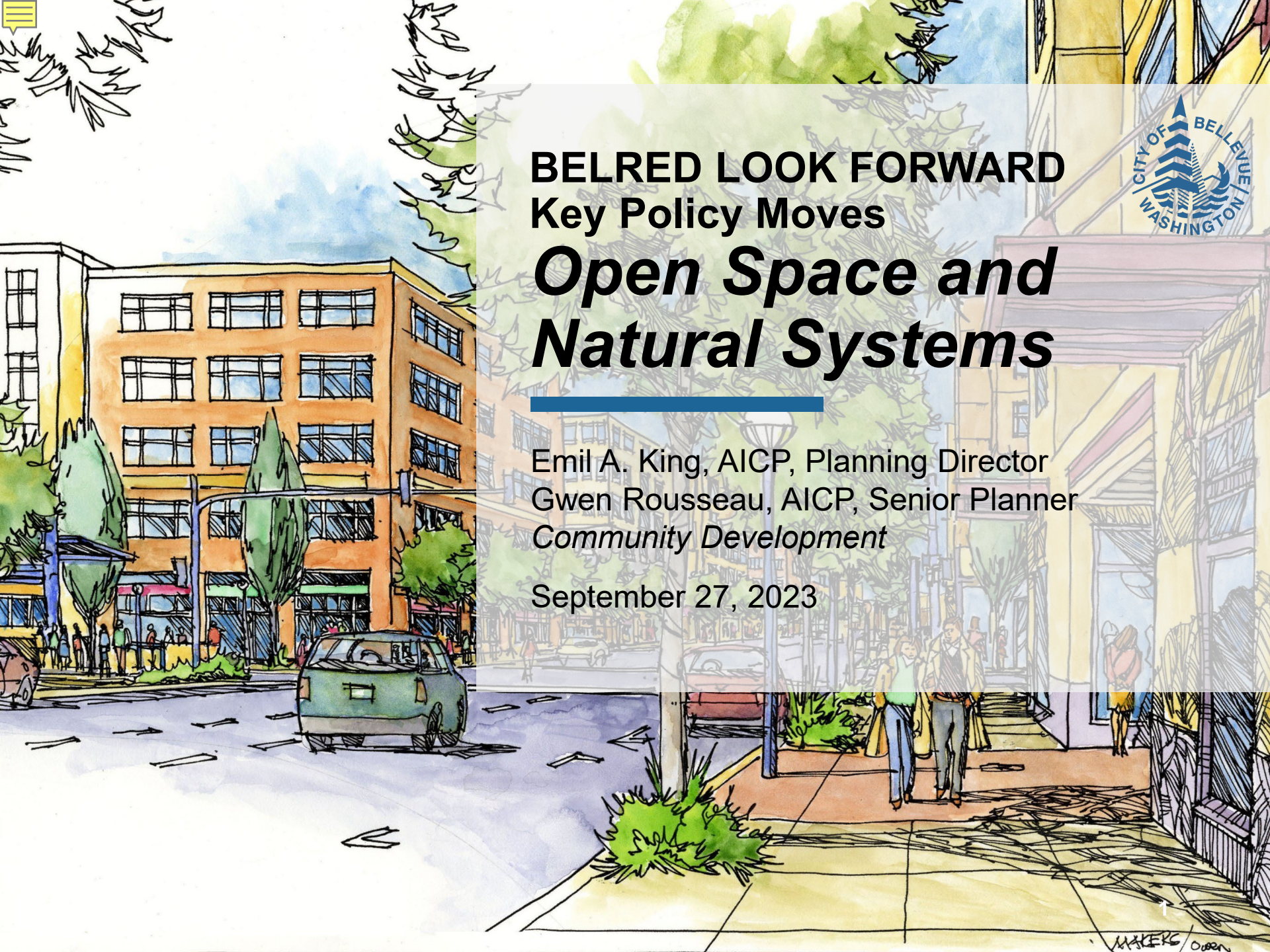
BELRED LOOK FORWARD

Key Policy Moves

Open Space and Natural Systems

Emil A. King, AICP, Planning Director
Gwen Rousseau, AICP, Senior Planner
Community Development

September 27, 2023



MAKERS OBERN



Direction

Confirm direction of policy moves related to **Open Space and Natural Systems** in the BelRed Subarea Plan occurring as part of the Comprehensive Plan Periodic Update.

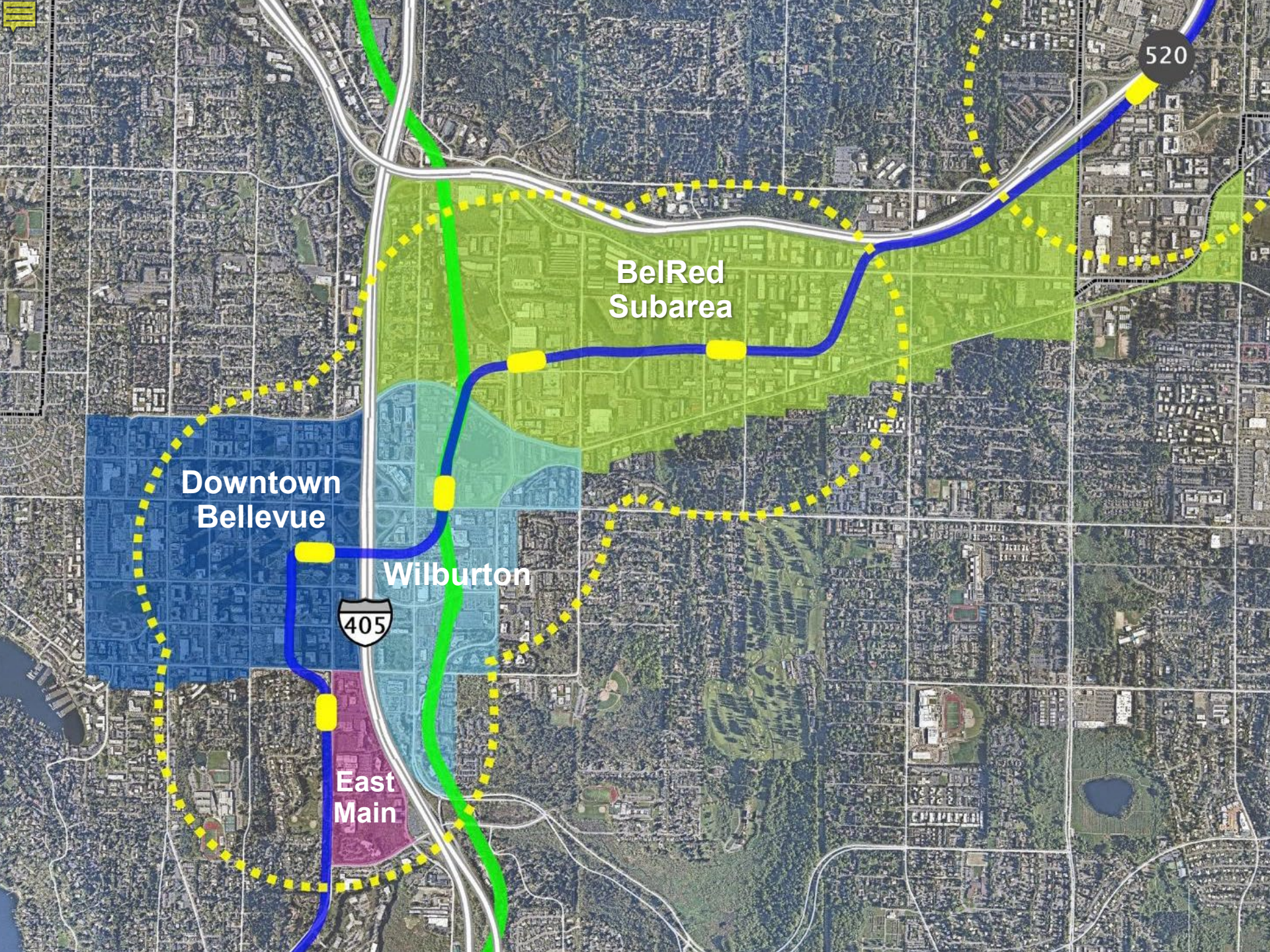




Agenda

- Introduction
- Road Map
- Parks and Open Space
- Surface and Stormwater Planning and Climate Change Resilience
- Holistic and High-Performance Implementation





520

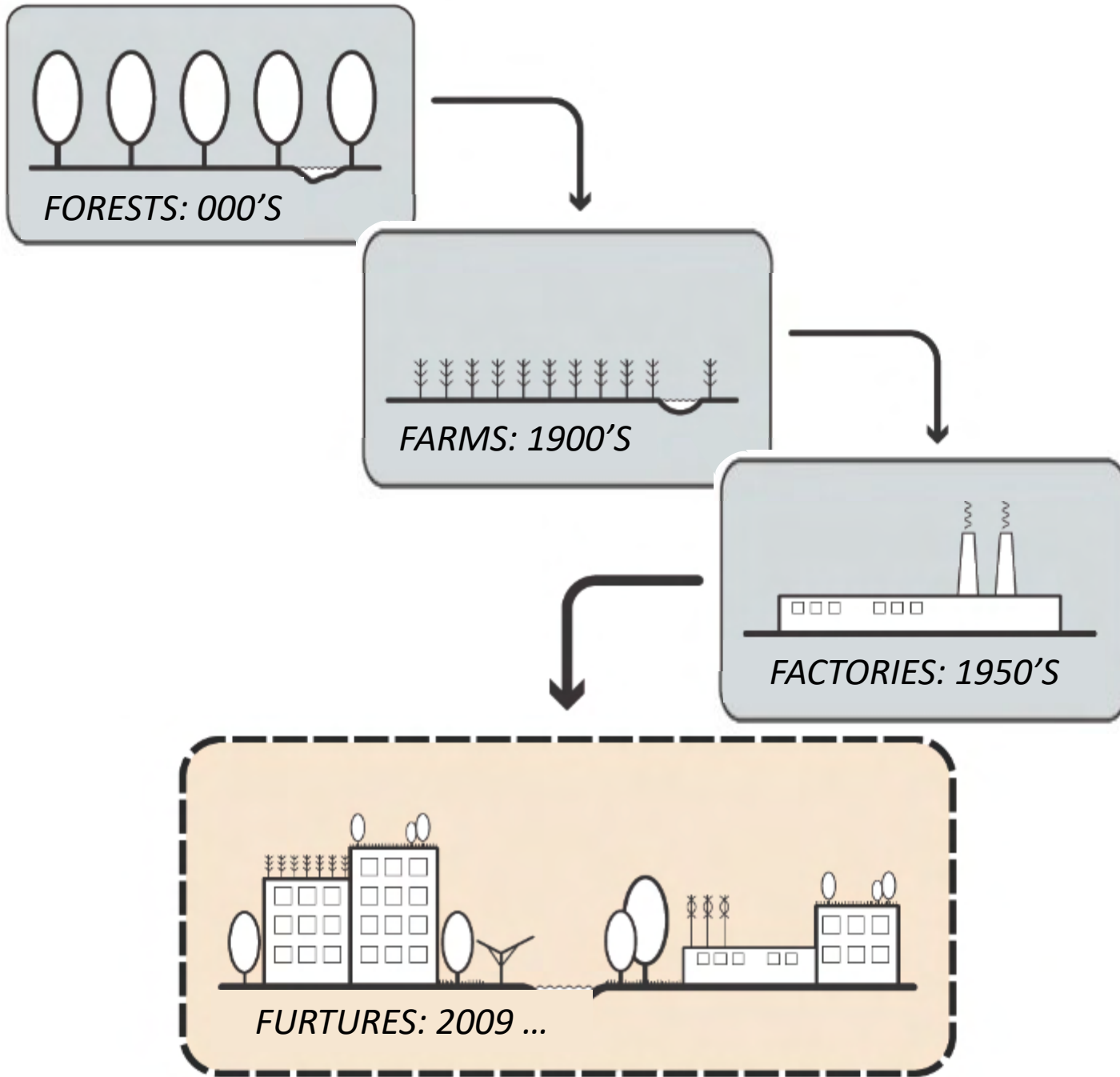
BelRed
Subarea

Downtown
Bellevue

Wilburton

405

East
Main







Scope of Work

- Reflect new information
- Strengthen implementation strategies
- Increase residential capacity
- Collaborate with community partners to further the BelRed Vision



September 27, 2023

Open Space & Natural Systems

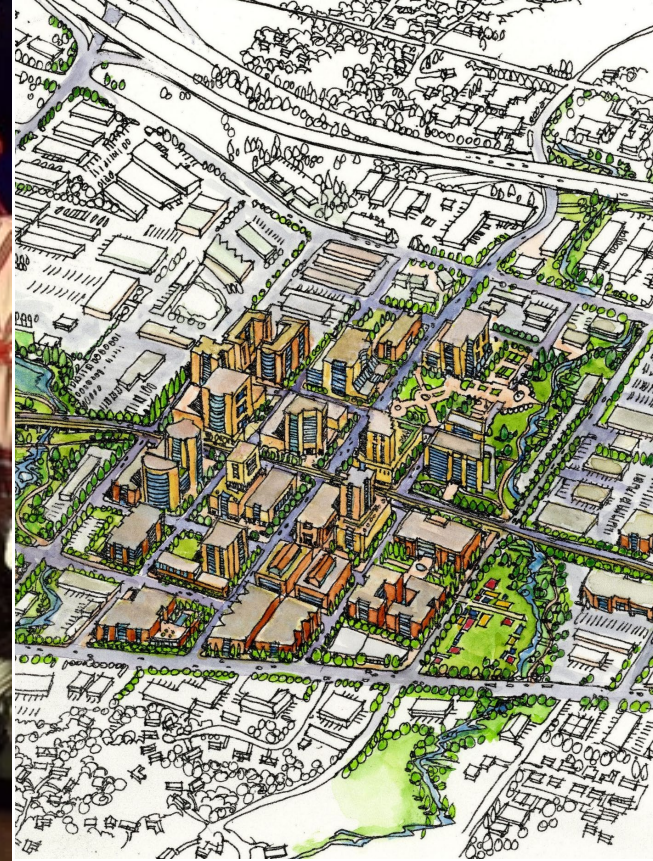
- Environment
- Parks & Open Space
- Urban Design



October 25, 2023

Cultural & Community Connections

- Arts, Culture & Creativity
- Urban Design



December 13, 2023

Land Use & Urban Form

- Land Use
- Housing
- Transportation



Key Policy Update Areas

- Parks and open space expansion
- Surface and stormwater planning and climate change resilience
- Holistic and high-performance implementation

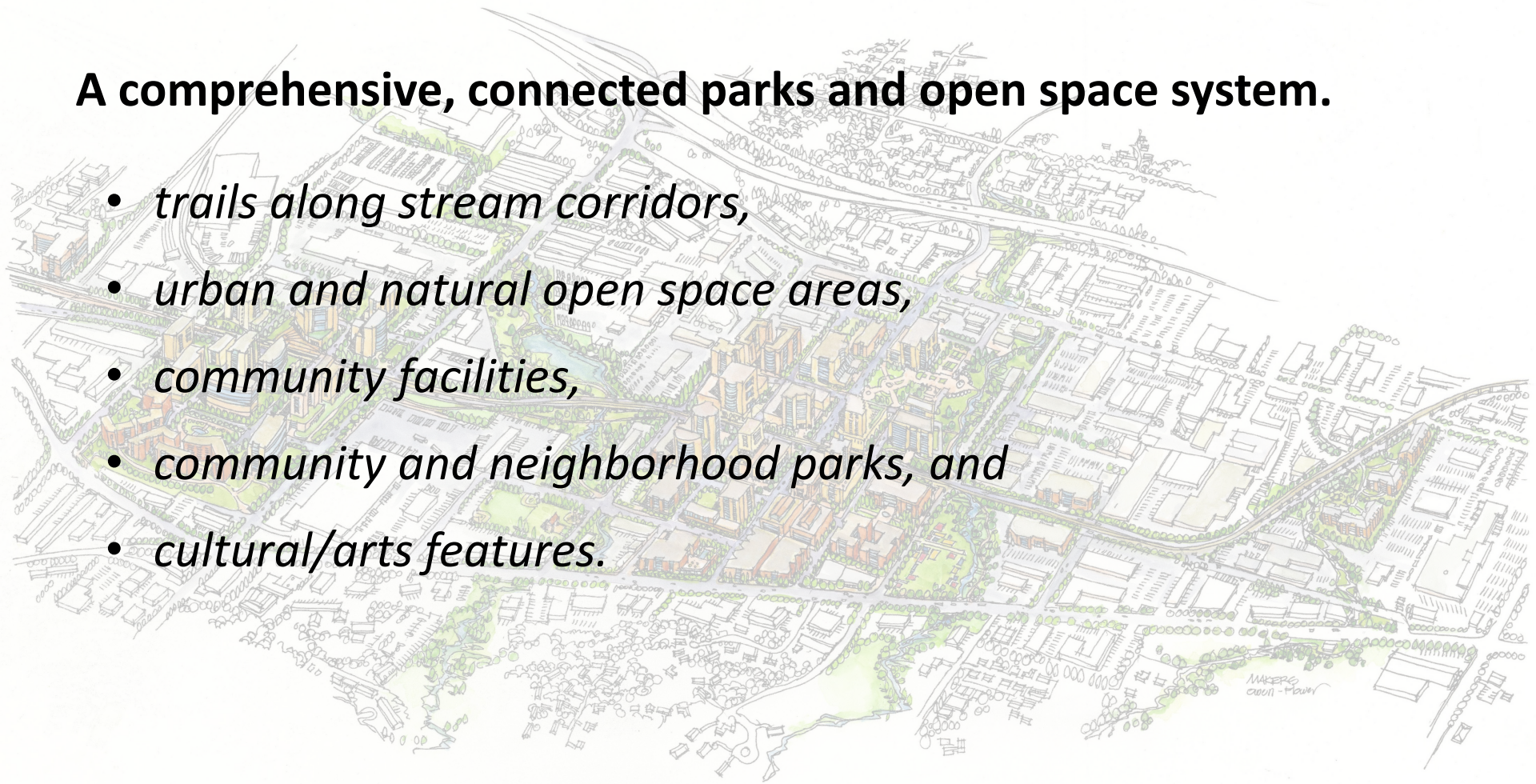


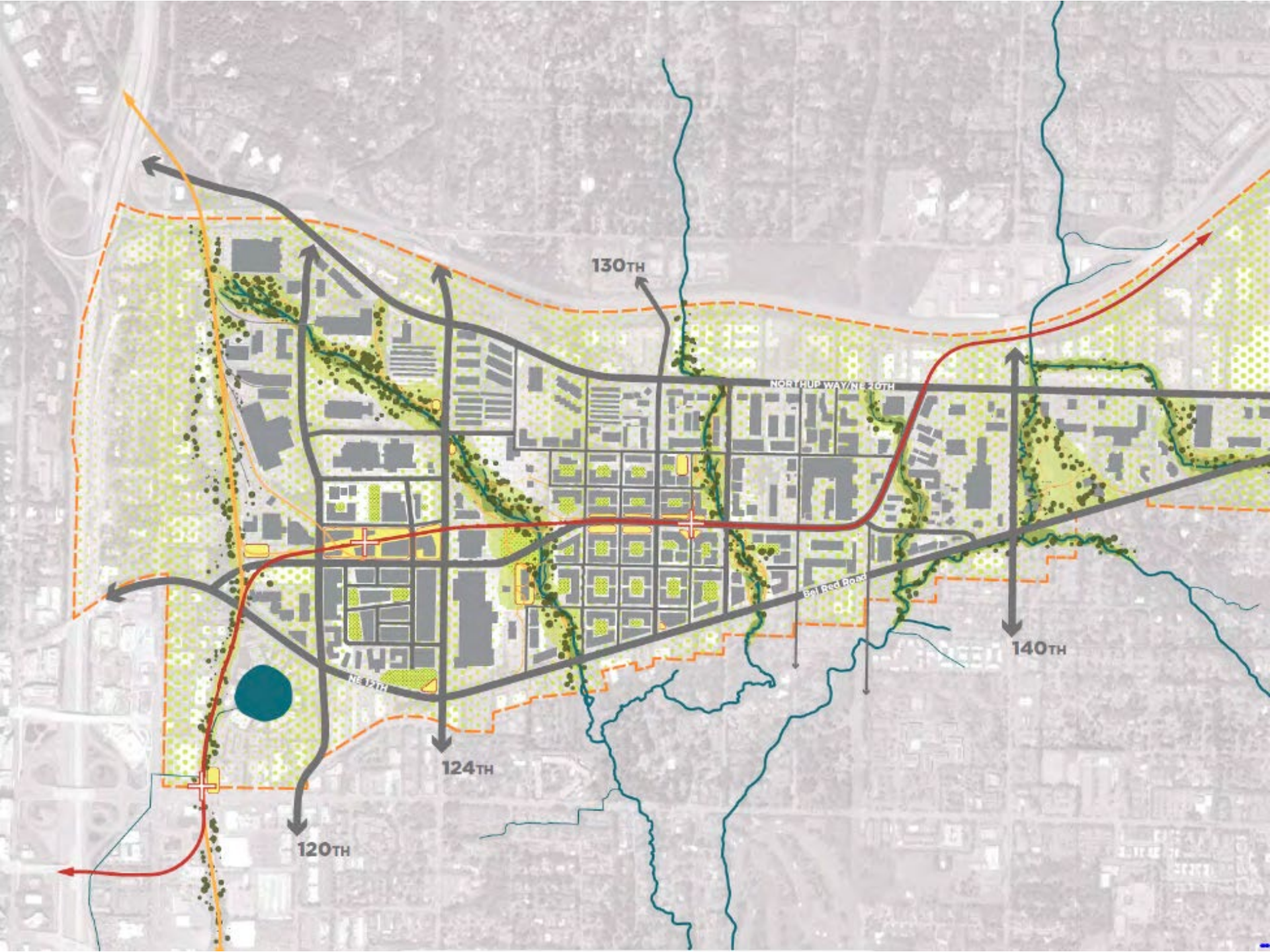
PARKS AND OPEN SPACE EXPANSION

BeRed Vision

A comprehensive, connected parks and open space system.

- *trails along stream corridors,*
- *urban and natural open space areas,*
- *community facilities,*
- *community and neighborhood parks, and*
- *cultural/arts features.*







Park, Trail and Open Space System

BelRed



- N-1 Neighborhood Park** – Along West Trib, adjacent to NE 16th Street Parkway. Integrates major trail systems and regional detention, with neighborhood park facilities. Includes 1 acre remnant transportation acquisition.

- N-2 Neighborhood Park** – Along West Tributary, adjacent to Bel-Red Road. Integrates major trail and neighborhood park facilities. Includes 3 acres Neighborhood Park / 1 acre riparian.

- N-3/CP Neighborhood Park/Civic Plaza** – Along Goff Creek, north of NE 16th Street between 130th Avenue NE and 132nd Avenue NE. Integrates approximately 1-acre urban plaza along pedestrian oriented retail street with 3-acre neighborhood park and trail facilities along 1-acre riparian corridor.

- N-4 Neighborhood Park** – Along Goff Creek, between Bel-Red Road and NE 16th Street. Integrates trail system along riparian corridor with neighborhood park facilities. Includes 3 acres Neighborhood Park / 1 acre riparian

- G Gateway Park** – Near the intersection of 124th Avenue NE and Bel-Red Road. Integrates mini park facilities and potential art component near major road intersection to serve as gateway to the Bel-Red Corridor.

- T-1 Trail Head** – Located adjacent to BNSF at Lake Bellevue. Integrates a trailhead with mini park facilities at BNSF regional trail and Lake Bellevue.

- T-2 Trail Head** – Located at the BNSF regional trail corridor and the NE 15th/16th Parkway. Integrates a trailhead with mini park facilities at the crossing of the two major multi purpose trails.

- M-1 Mini Park** – Along Sears Creek west of 148th Avenue NE, between Bel-Red Road and NE 16th Street. Integrates trial system and riparian corridor with mini park facilities.

- M-2 Mini Park** – Centrally located between Bel-Red Road, 156th Avenue NE, and NE 20th Street. Incorporates mini park facilities to serve node.

- M-3 Mini Park** – Located between 120th Avenue NE and 124 Avenue NE and south of NE 15th/16th Street. Provides park facilities to serve residential and commercial mixed use development

- C-1 Community Park** – Along West Tributary adjacent to 120th Avenue NE. Incorporates trailhead and trail system along West Tributary and BNSF with community park facilities. Includes 10-acre acquisition through purchase for community park facilities and 7-acre open space dedication by adjacent owner .



PARKS AND OPEN SPACE EXPANSION

Looking Back

Strengths

- **Streams and wetlands provide framework for park and open space expansion.**
- **BelRed Park, Trail and Open Space System Plan identifies key opportunities.**

Weaknesses

- **Starting with a deficit of parks and community facilities.**
- **Fees in lieu have not kept pace with rising land values.**



PARKS AND OPEN SPACE EXPANSION

Looking Forward

Threats

Few parks =

Loss of park benefits:

- *Active lifestyles,*
- *Livability,*
- *Resiliency,*
- *Community building, +*

Disparate access to parks and open space.

Community Feedback

- *Parks and green spaces are highly valued.*
- **Ensure future generations can enjoy Bellevue's park-like setting.**
- *66% of BelRed residents prefer a **small park or trail within a 5-minute walk, no parking.***

PARKS AND OPEN SPACE EXPANSION

Policy Moves

- *Exploring additional mechanisms for funding acquisition of parks and open space.*
- **Tying changes in fees *in lieu* to changes in land values.**
- *Evaluating opportunities to leverage public and private investments for the creation of linear parks, plazas and recreational trails, and for expanding access to natural areas.*



SURFACE AND STORMWATER PLANNING AND CLIMATE RESILIENCE

BeRed Vision



Environmental improvements

Redevelopment will provide opportunities for major environmental enhancements, including:

- improving riparian corridors,*
- adding trees and green spaces, and*
- providing a more environmentally sensitive approach to managing storm water and other natural resources.*

Looking Back

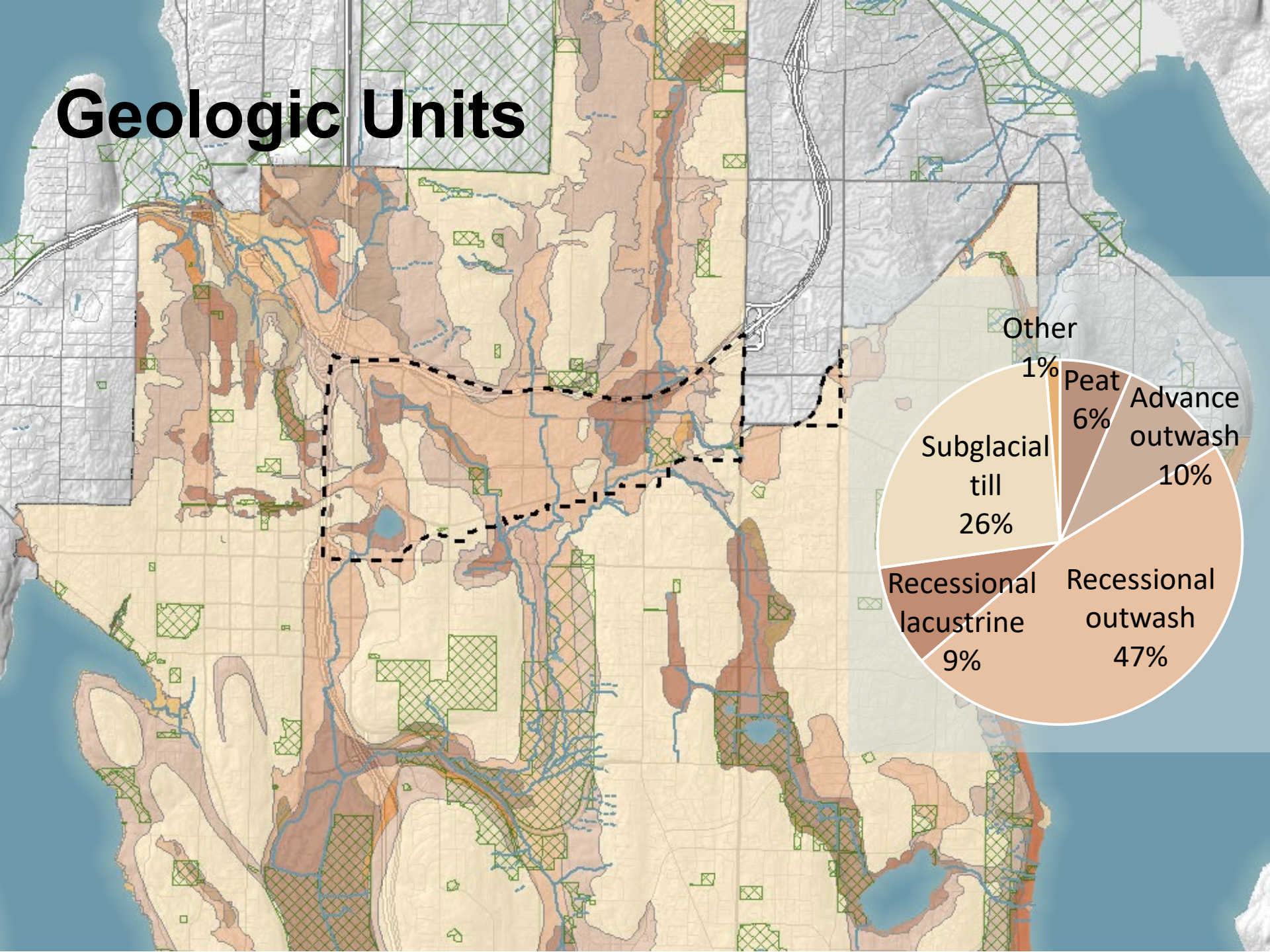
Strengths

- **Streams and wetlands provide *framework for improvements.***
- **“Green Streets” provide a basis for a network of natural drainage and connected corridors of trees and vegetation.**

Weaknesses

- **Starting with a deficit of pervious surface, tree canopy and a high water table.**
- **Time / effort to daylight streams and restore riparian habitat cost prohibitive.**
- **Some conflicting requirements limit onsite natural drainage opportunities.**
- **Lack of a coordinated surface and stormwater strategy for the subarea.**

Geologic Units





SURFACE AND STORMWATER PLANNING AND CLIMATE RESILIENCE

Looking Forward



Threats

- **Increasing frequency, intensity, and duration of storm and high heat events.**

NEWS

Fires, floods, destruction: Washington copes with worsening climate change

From rising sea levels and crop failures to dying forests and fish, Washington state is struggling

Drought, Heat Waves Worsen West Coast Air Pollution Inequality

How extreme heat scorched Pacific Northwest's evergreen trees

Community Feedback

- ***Bellevue* residents value the city's streams, lakes and wetlands for the role they play in a healthy ecosystem.**
- **Expand tree canopy, especially in neighborhoods with low canopy levels.**

SURFACE & STORMWATER PLANNING

Policy Moves

- *Studying development of regional surface and stormwater facilities.*
- **Leveraging public *and* private investments in transportation, parks and open space facilities.**



CLIMATE CHANGE RESILIENCE

Policy Moves

- Building resilience to climate change through investments in and incentives for green building and biophilic design.





HOLISTIC AND HIGH-PERFORMANCE IMPLEMENTATION

BelRed Vision

Sustainability

New neighborhoods, buildings, streetscapes, parks and open space systems, environmental enhancements, and transportation facilities will also be planned, designed and developed using state-of-the-art techniques to enhance the natural and built environment and create a more livable community.





HOLISTIC AND HIGH-PERFORMANCE IMPLEMENTATION

Looking Back

Strengths

- *BelRed's nodal development pattern enables efficient use of land and energy.*
- **Overlapping natural and built environment networks provide a framework for synergistic solutions.**

Weaknesses

- **Some siloed planning resulting in less efficient and missed opportunities.**
- *Instances where blanket provisions fail to recognize unique site contexts.*

HOLISTIC AND HIGH-PERFORMANCE IMPLEMENTATION

Looking Forward



Threats

- *Incremental or site by site implementation falling short of ecological and livability goals.*
- *Implementation **delay.***

Community Feedback

- *Reevaluate regulations that create **barriers to sustainable design.***



HOLISTIC AND HIGH-PERFORMANCE IMPLEMENTATION

Policy Moves

- **Contextualizing** *the Floor Area Ratio (FAR) amenity incentive system to direct amenities where they will have the greatest impact.*
- **Evaluating barriers** *to sustainable design, relaxing requirements where possible, and seeking solutions that achieve a high level of performance for multiple objectives.*





Direction

Confirm direction of policy moves related to **Open Space and Natural Systems** in the BelRed Subarea Plan occurring as part of the Comprehensive Plan Periodic Update.

