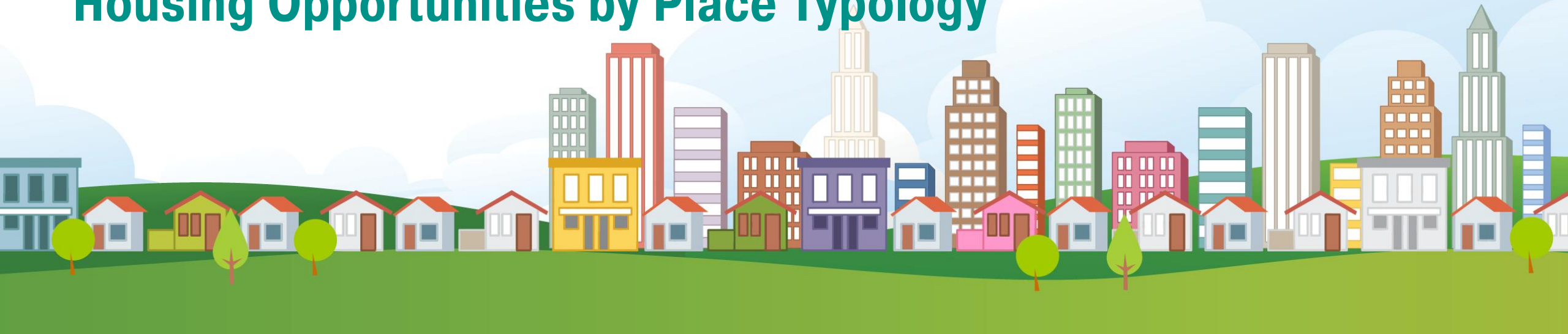


# REGIONAL HOUSING STRATEGY

## Housing Opportunities by Place Typology



**Bellevue Planning Commission • July 26, 2023**

<https://www.psrc.org/our-work/housing>

# Regional Housing Strategy Actions and Tools

## Supply



**Build more housing of different types**

## Stability



**Provide opportunities for residents to live in housing that meets their needs**

## Subsidy



**Create and sustain long-term funding sources to create and preserve housing for very low-income households and unhoused residents**

# Regional Housing Strategy – PSRC Next Steps

**Monitoring** – A framework to track performance and outcomes over time and identify challenges or barriers over time

★ **Typology** – Develop and use a typology to identify the strategies, tools, and actions that have the most potential to make an impact in different types of places

**Plan Review** – Develop resources and guidance and convene stakeholders to support the 2024 major periodic comprehensive plan update

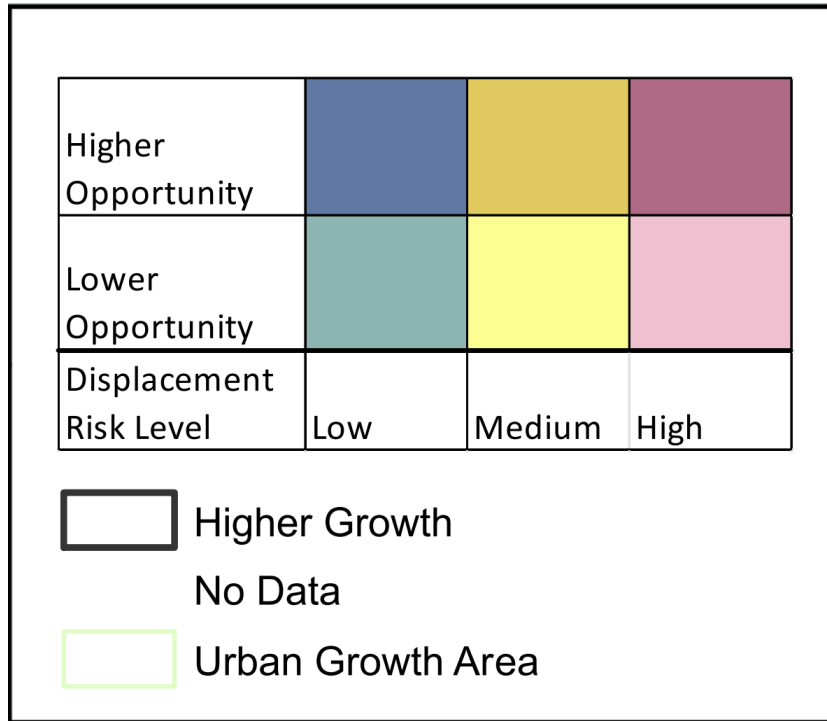


# Purpose of a Typology

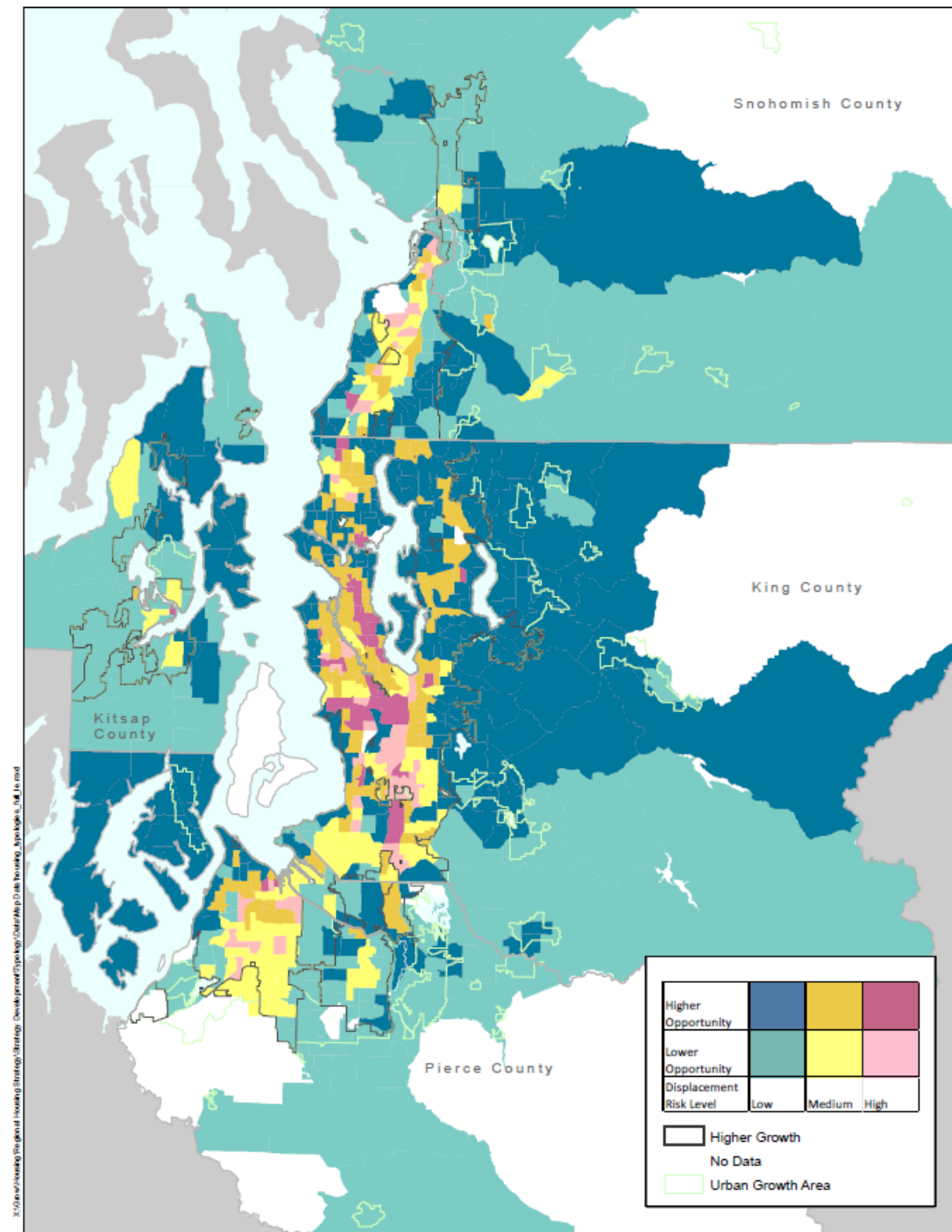
- To retain a **commonality of approach regionally** while **tailoring recommendations to specific locations** based on their needs and opportunities
- To **identify appropriate tools and actions** to support housing access and affordability and as places change and grow
- Respond to **stakeholder feedback** – “everyone has a role to play”

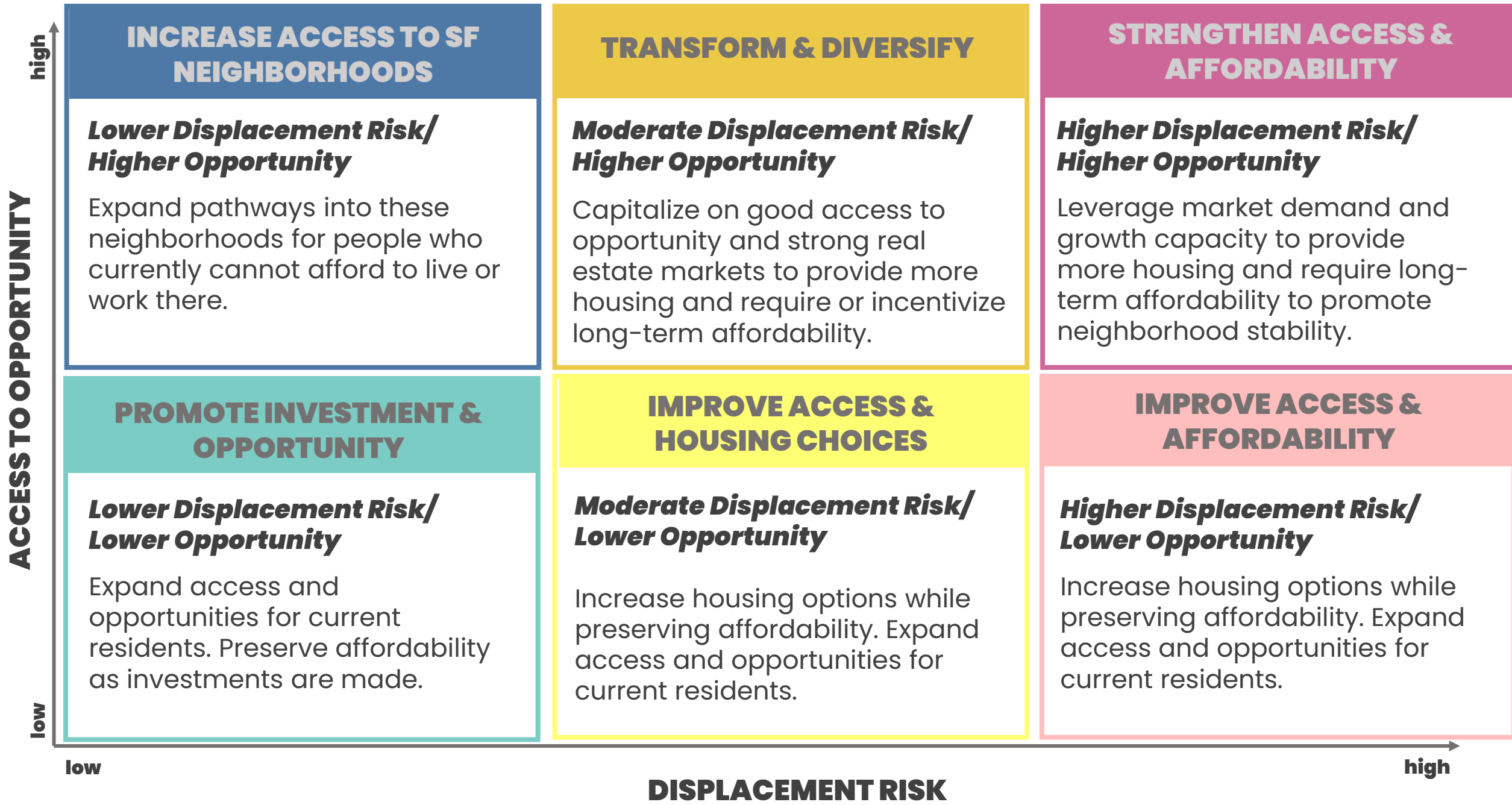
# Map of Types of Places

- Six types of places identified by colors



- Higher growth areas shown in border





**INCREASE ACCESS TO SF NEIGHBORHOODS**

*Lower Displacement Risk/ Higher Opportunity*

Expand pathways into these neighborhoods for people who currently cannot afford to live or work there.

**TRANSFORM & DIVERSIFY**

*Moderate Displacement Risk/ Higher Opportunity*

Capitalize on good access to opportunity and strong real estate markets to provide more housing and require or incentivize long-term affordability.

**STRENGTHEN ACCESS & AFFORDABILITY**

*Higher Displacement Risk/ Higher Opportunity*

Leverage market demand and growth capacity to provide more housing and require long-term affordability to promote neighborhood stability.

**PROMOTE INVESTMENT & OPPORTUNITY**

*Lower Displacement Risk/ Lower Opportunity*

Expand access and opportunities for current residents. Preserve affordability as investments are made.

**IMPROVE ACCESS & HOUSING CHOICES**

*Moderate Displacement Risk/ Lower Opportunity*

Increase housing options while preserving affordability. Expand access and opportunities for current residents.

**IMPROVE ACCESS & AFFORDABILITY**

*Higher Displacement Risk/ Lower Opportunity*

Increase housing options while preserving affordability. Expand access and opportunities for current residents.

ACCESS TO OPPORTUNITY

high

low

low

DISPLACEMENT RISK

high

# Tools & Actions by Type of Place

- Identify potential tools and actions from the **Regional Housing Strategy** and **Housing Innovations Program (HIP)** for:
  - All types of places – regionwide
  - By type of place
- Sorting based on:
  - The **policy objectives** for the different types of places
  - The direction set in Regional Housing Strategy
  - **Findings from the 2022 Housing Incentives and Tools Survey** on what tools and incentives are most effective
- List is a starting place for local jurisdictions and/or options to continue housing work – **not** an exhaustive list

# Tools & Actions by Type of Place

Supply – Encourage the develop of more and different types of housing

- Middle density housing
- Upzoning for transit supportive densities
- Reevaluating parking requirements

Stability – Mitigate residential displacement

- Incentive zoning
- Public land for affordable housing
- Relocation assistance

Subsidy – Funding to create and preserve income restricted units

- Commercial linkage fee
- Inclusionary housing in-lieu fee
- Sales and use tax



# Web Platform for Typology & Resources

- Interactive web platform
- User can select a census tract/type of place and get information on the recommended tools and actions for that type of place
- Show the connections between various tools and actions

# Website Demonstration

<https://www.psrc.org/our-work/housing-typology>



A photograph of a courtyard with colorful buildings and a sculpture. The buildings are multi-story with various colored panels (orange, grey, yellow, red). A large sculpture made of metal pipes is in the center. The sky is blue with some clouds. A semi-transparent white box is overlaid on the right side of the image.

## STAFF CONTACT INFO

Paul Inghram, FAICP  
[pinghram@psrc.org](mailto:pinghram@psrc.org)



Thank you.