



BELLEVUE  
SMART

# Planning for a Smarter City

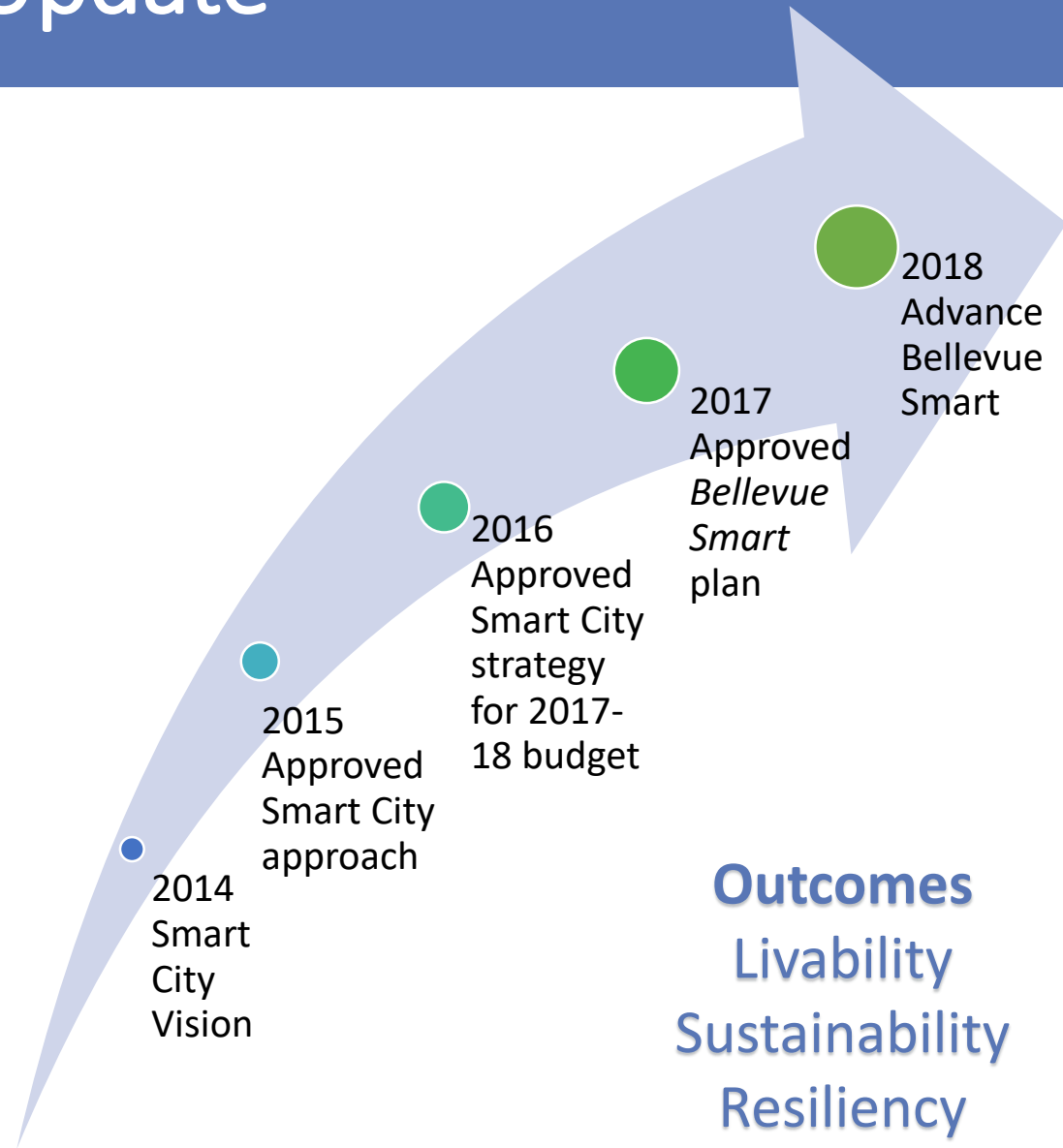
Update to Bellevue City Council

July 9, 2018

# Bellevue Smart Update

## Council Vision

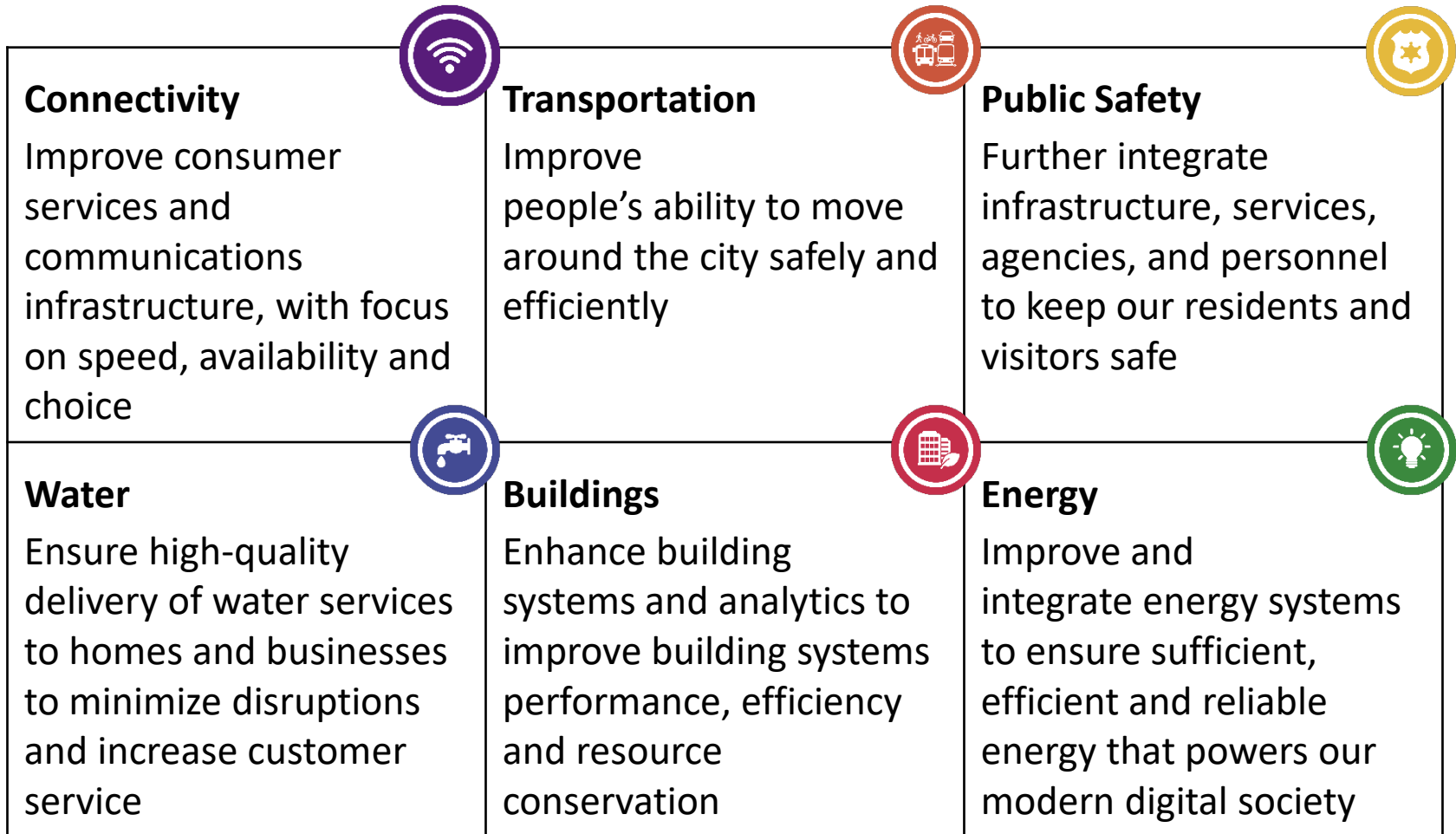
Bellevue is a “smart city” with a clean, high-quality environment and excellent and reliable infrastructure that supports our vibrant and growing city, including high-tech connectivity.



**Outcomes**  
Livability  
Sustainability  
Resiliency

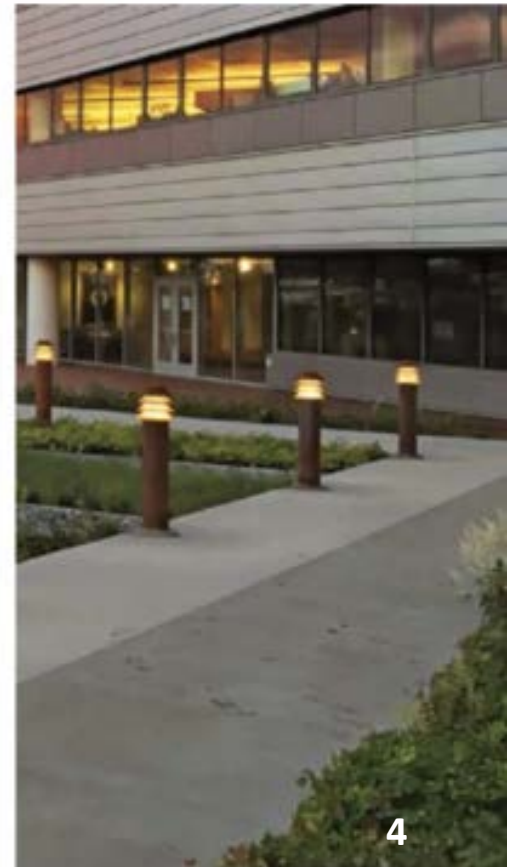
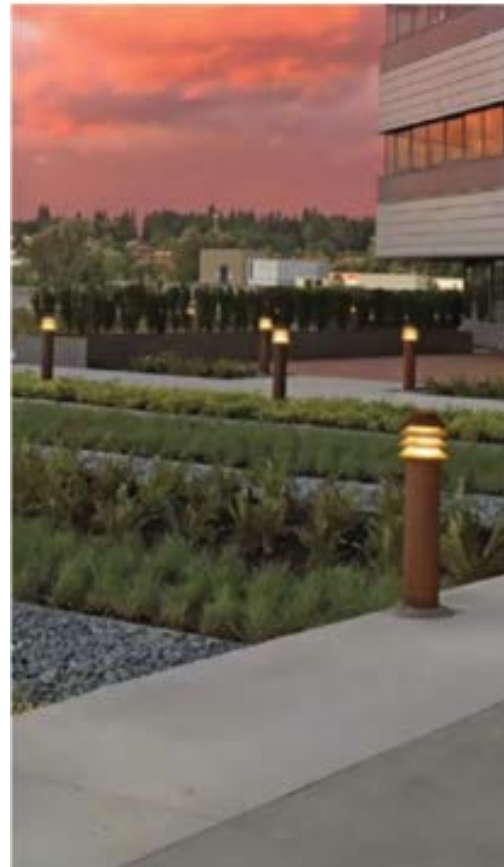
# Smart City Element Goals

Projects are embedded across multiple departments, workplans and initiatives.



# Principle Strategies

1. Focus on proactive and adaptive
2. Drive with data
3. Pursue partnerships
4. Leverage regional relationships



# How's our progress?

On track with plan

Bellevue Smart Plan update targeted for 2019

## BELLEVUE SMART TIMELINE

| Task Name  | 2017   |    |    | 2018 |    |    | 2019 |    |    | 2020 |    |    |
|--|--|----|----|------|----|----|------|----|----|------|----|----|
|  | Q1   | Q2 | Q3 | Q4   | Q1 | Q2 | Q3   | Q4 | Q1 | Q2   | Q3 | Q4 |
| <b>Connectivity</b>  |  |    |    |      |    |    |      |    |    |      |    |    |
| Complete regional fiber optic ring                             | [Project bar from Q1 2017 to Q4 2017]  |    |    |      |    |    |      |    |    |      |    |    |
| Connect GIX to fiber ring                                      | [Milestone diamond in Q2 2017]   |    |    |      |    |    |      |    |    |      |    |    |
| Expand public Wi-Fi  | [Project bar from Q1 2017 to Q4 2018]  |    |    |      |    |    |      |    |    |      |    |    |
| Increase access to gigabit internet                            | [Project bar from Q1 2018 to Q4 2019]  |    |    |      |    |    |      |    |    |      |    |    |
| Improve consumer broadband partnership, leases                 | [Project bar from Q1 2017 to Q4 2020]  |    |    |      |    |    |      |    |    |      |    |    |
| Integrate smart city networks                                  | [Project bar from Q1 2018 to Q4 2020]  |    |    |      |    |    |      |    |    |      |    |    |
| <b>Transportation</b>  |  |    |    |      |    |    |      |    |    |      |    |    |
| Complete ITS Master Plan Update                                | [Milestone diamond in Q2 2018]   |    |    |      |    |    |      |    |    |      |    |    |
| Complete streetlight management system pilot                   | [Milestone diamond in Q2 2018]   |    |    |      |    |    |      |    |    |      |    |    |
| Issue performance monitoring system RFP                        | [Milestone diamond in Q2 2018]   |    |    |      |    |    |      |    |    |      |    |    |
| Traffic network communication backbone upgrade                 | [Project bar from Q1 2018 to Q4 2019]  |    |    |      |    |    |      |    |    |      |    |    |
| Integrate enhanced traveler information dissemination          | [Milestone diamond in Q2 2018]   |    |    |      |    |    |      |    |    |      |    |    |
| Advanced video analytics pilot for ped-bike-auto               | [Project bar from Q1 2017 to Q4 2018]  |    |    |      |    |    |      |    |    |      |    |    |
| Deploy next-gen TSP  | [Milestone diamond in Q2 2019]   |    |    |      |    |    |      |    |    |      |    |    |
| Start transit data-sharing system development                  | [Milestone diamond in Q4 2020]   |    |    |      |    |    |      |    |    |      |    |    |
| Complete LED streetlight upgrades (tbd)                        |  |    |    |      |    |    |      |    |    |      |    |    |
| Complete GPS emergency vehicle preemption upgrade (tbd)        |  |    |    |      |    |    |      |    |    |      |    |    |
| Partner on emerging transportation technologies (tbd)          |  |    |    |      |    |    |      |    |    |      |    |    |
| <b>Public Safety</b>   |  |    |    |      |    |    |      |    |    |      |    |    |
| Expand analytics and CompStat for policing efficiencies        | [Milestone diamond in Q1 2017]   |    |    |      |    |    |      |    |    |      |    |    |
| Develop interactive map for emergency/disaster response        | [Project bar from Q1 2017 to Q2 2017]  |    |    |      |    |    |      |    |    |      |    |    |
| Integrate electronic patient care records                      | [Milestone diamond in Q2 2018]   |    |    |      |    |    |      |    |    |      |    |    |
| Increase interoperability with FirstNet (tbd)                  |  |    |    |      |    |    |      |    |    |      |    |    |
| Public Safety Emergency Radio Network replacement (tbd)        |  |    |    |      |    |    |      |    |    |      |    |    |
| <b>Water</b>   |  |    |    |      |    |    |      |    |    |      |    |    |
| Detect potential pipe breaks using acoustic technology         |  |    |    |      |    |    |      |    |    |      |    |    |
| Complete Smart City Dashboard – water module                   | [Project bar from Q1 2017 to Q2 2017]  |    |    |      |    |    |      |    |    |      |    |    |
| Release AMI RFP  |  |    |    |      |    |    |      |    |    |      |    |    |
| Select AMI vendor  | [Milestone diamond in Q2 2018]   |    |    |      |    |    |      |    |    |      |    |    |
| Implement AMI  | [Project bar from Q1 2018 to Q4 2019]  |    |    |      |    |    |      |    |    |      |    |    |
| SCADA Master Plan  | [Project bar from Q1 2018 to Q4 2018]  |    |    |      |    |    |      |    |    |      |    |    |
| Integrate IT systems for field response                        | [Milestone diamond in Q2 2019]   |    |    |      |    |    |      |    |    |      |    |    |
| Real-time customer access to water use/leak data               | [Milestone diamond in Q2 2019]   |    |    |      |    |    |      |    |    |      |    |    |
| Implement predictive operations pilot at stormwater ponds      | [Project bar from Q1 2019 to Q4 2019]  |    |    |      |    |    |      |    |    |      |    |    |
| Implement self-healing water system (tbd)                      |  |    |    |      |    |    |      |    |    |      |    |    |
| <b>Buildings</b>   |  |    |    |      |    |    |      |    |    |      |    |    |
| Urban Smart Bellevue Pilot with PSE                            | [Project bar from Q1 2017 to Q4 2017]  |    |    |      |    |    |      |    |    |      |    |    |
| Quarterly municipal buildings energy benchmarking              | [Milestone diamonds in Q1 2017, Q2 2017, Q3 2017, Q4 2017, Q1 2018, Q2 2018, Q3 2018, Q4 2018, Q1 2019, Q2 2019, Q3 2019, Q4 2019] |    |    |      |    |    |      |    |    |      |    |    |
| Georgetown Energy Prize Awarded                                | [Milestone diamond in Q2 2018]   |    |    |      |    |    |      |    |    |      |    |    |
| Complete Downtown Sustainability Assessment                    | [Milestone diamond in Q2 2019]   |    |    |      |    |    |      |    |    |      |    |    |
| Develop commercial buildings benchmarking program (tbd)        |  |    |    |      |    |    |      |    |    |      |    |    |
| Integrate security/fire alarm systems/emergency response (tbd) |  |    |    |      |    |    |      |    |    |      |    |    |
| Integrate Net Zero energy/water in buildings (tbd)             |  |    |    |      |    |    |      |    |    |      |    |    |
| <b>Energy</b>  |  |    |    |      |    |    |      |    |    |      |    |    |
| Analyze greenhouse gas emissions                               | [Project bar from Q1 2017 to Q4 2018]  |    |    |      |    |    |      |    |    |      |    |    |
| PSE upgrades Smart Grid systems                                | [Project bar from Q1 2017 to Q4 2018]  |    |    |      |    |    |      |    |    |      |    |    |
| PSE improves electrical reliability                            | [Project bar from Q1 2017 to Q4 2018]  |    |    |      |    |    |      |    |    |      |    |    |
| Upgrade and expand EV charging station network                 | [Milestone diamond in Q4 2020]   |    |    |      |    |    |      |    |    |      |    |    |
| PSE customer access to real-time energy usage data             | [Project bar from Q1 2017 to Q4 2018]  |    |    |      |    |    |      |    |    |      |    |    |
| PSE demand response programs available (tbd)                   | [Project bar from Q1 2017 to Q4 2018]  |    |    |      |    |    |      |    |    |      |    |    |

[Project bar] project [Milestone diamond] milestone [Green checkmark] complete



# Progress: Expanded Public Wi-Fi

## Connectivity

- Outdoor Wi-Fi in Parks:
  - Completed – Crossroads Park, Highland Park, Lewis Creek, Kelsey Creek, Downtown Park
  - In progress - Botanical Garden
- Affordable Housing Properties:
  - Spiritwood Apartments (148<sup>th</sup> Ave) - *Completed*
  - Highland Village (NE 8<sup>th</sup> St) – *in design*
  - Somerset Gardens (NE 29<sup>th</sup> Pl) – *initial discussions*



# Progress: Intelligent Transportation System

- Traffic signal performance monitoring
- Streetlight management
- Parking management

## Transportation



# Progress: Integrated Electronic Patient Care

- Mobile patient information sharing with hospitals
- End-to-end data collection between EMS, doctors and follow up care
- Integrated data analysis allows early awareness of community health trends

## Public Safety

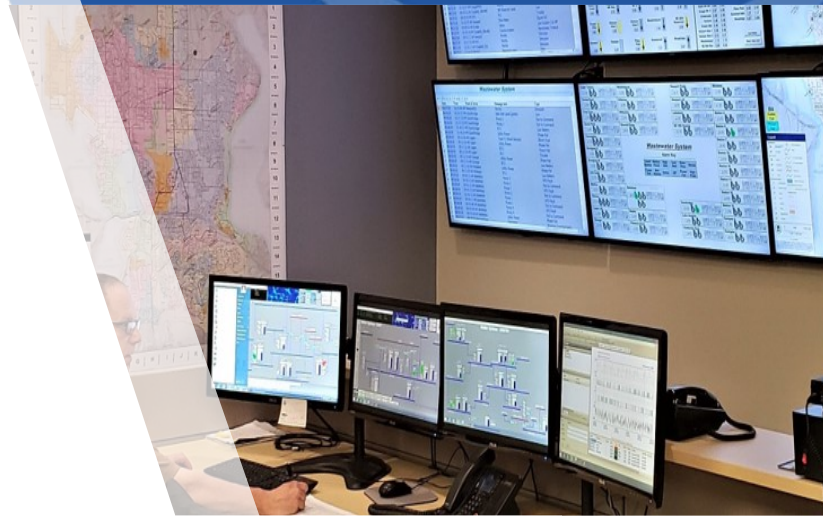




# Progress: Water Operations

- Smart Water Meters contract procurement in progress
- Implementing predictive operations at storm water ponds
- Predictive analytics on pipeline failures through machine learning
- Long-term planning for real-time operational controls through SCADA

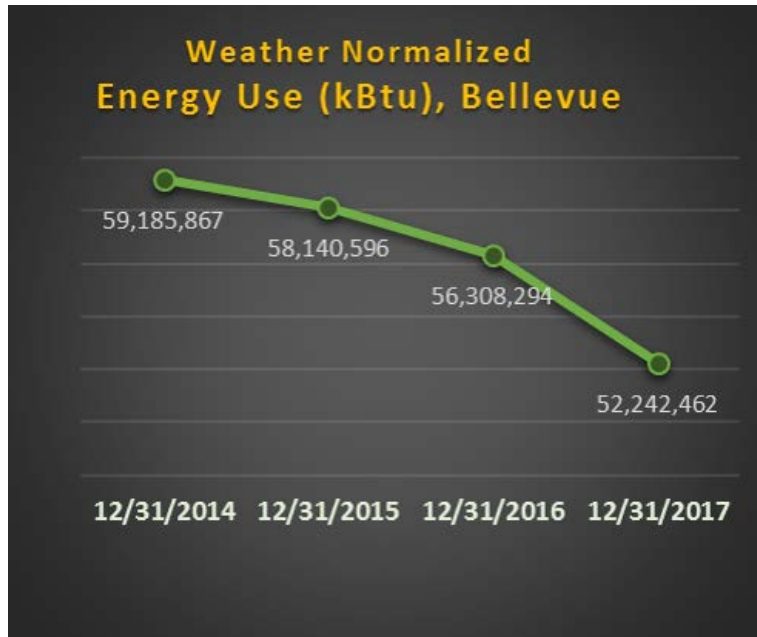
Water



# Progress: Benchmarking City Buildings

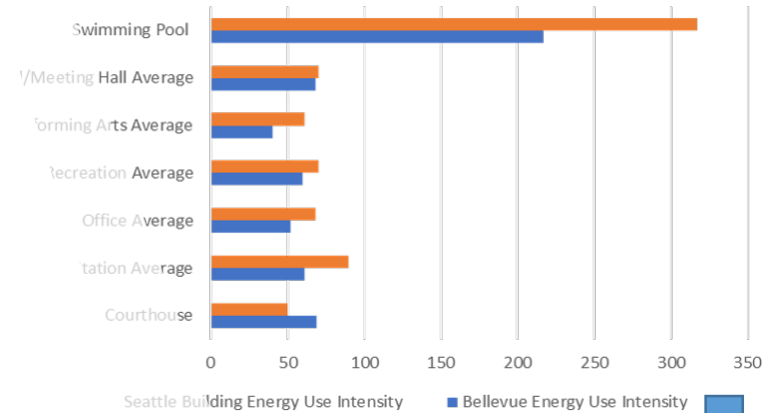
## Buildings

27 municipal buildings over 5,000 sq ft benchmarked for energy use intensity



Reduced energy use over time

Bellevue Municipal Buildings Compared to Peer Seattle Buildings (2017)



# Progress: Energy

- PSE electric and gas smart meter upgrades 2018-2020
- Bellevue signed up for green power for select city facilities through PSE's Green Direct program
- U.S. DOE grant to analyze drivers of change in greenhouse gas emissions near completion

## Energy



# Future Council Actions

- Interest Statement for Smart Mobility
- Small Cell Master License City Code Change
- Small Cell Master License Agreement
- AMI Contract

# Questions?



## **Sabra Schneider**

Chief Information Officer

[sschneider@bellevuewa.gov](mailto:sschneider@bellevuewa.gov)

## **Chelo Picardal**

Chief Technology Officer

[cpicardal@bellevuewa.gov](mailto:cpicardal@bellevuewa.gov)

## **Andrew Lee**

Deputy Director, Utilities

[ahlee@bellevuewa.gov](mailto:ahlee@bellevuewa.gov)

## **Chris Long**

Traffic Engineering Manager

[clong@Bellevuewa.gov](mailto:clong@Bellevuewa.gov)