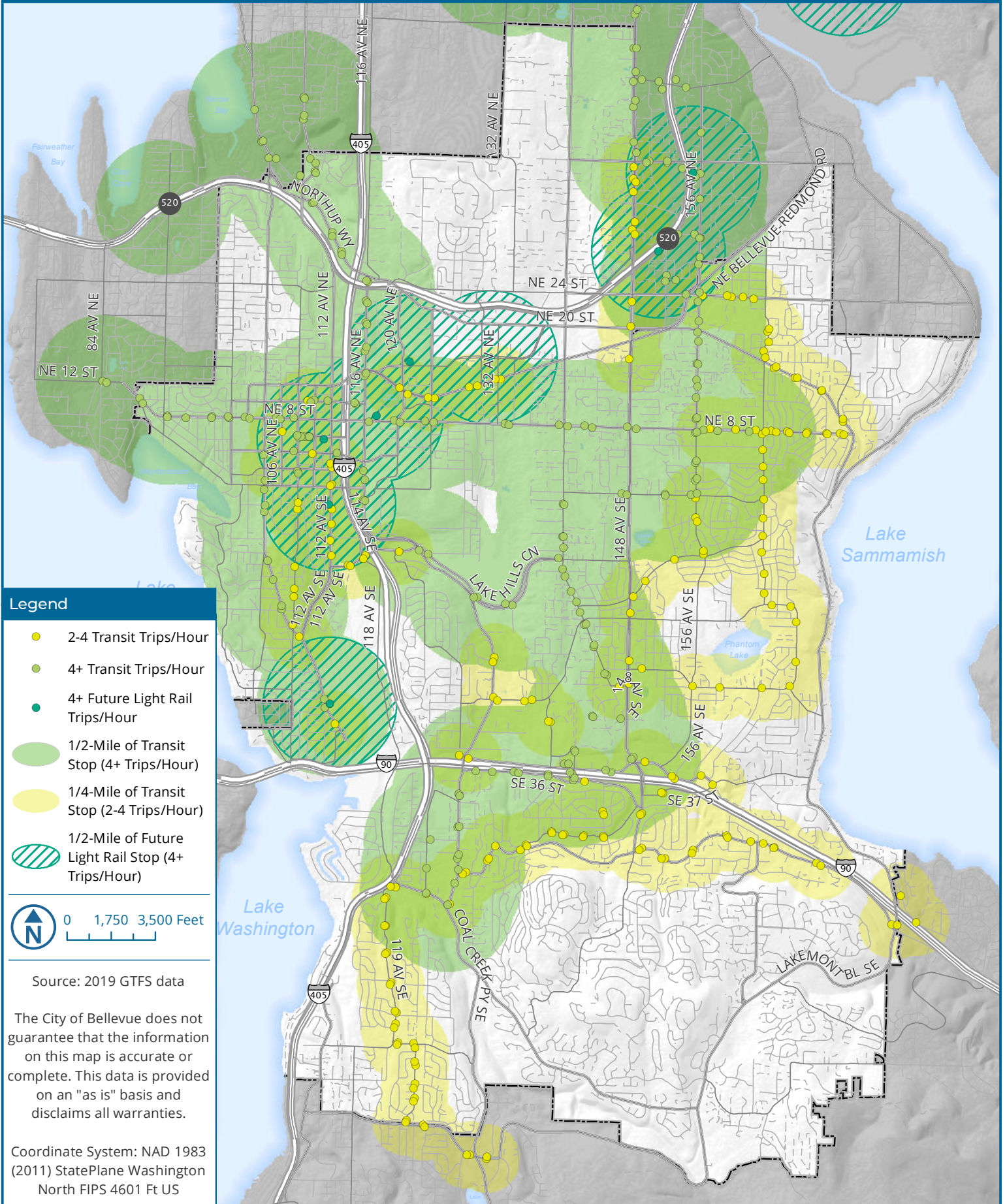


Transit Stop Frequency

Weekday Trips per Hour, 7am-7pm



Legend

- 2-4 Transit Trips/Hour
- 4+ Transit Trips/Hour
- 4+ Future Light Rail Trips/Hour
- 1/2-Mile of Transit Stop (4+ Trips/Hour)
- 1/4-Mile of Transit Stop (2-4 Trips/Hour)
- 1/2-Mile of Future Light Rail Stop (4+ Trips/Hour)



Source: 2019 GTFS data

The City of Bellevue does not guarantee that the information on this map is accurate or complete. This data is provided on an "as is" basis and disclaims all warranties.

Coordinate System: NAD 1983 (2011) StatePlane Washington North FIPS 4601 Ft US