



2018 Annual
Comprehensive Plan Amendments
Threshold Review Recommendations

City Council Extended Study Session

July 23, 2018



2018 Annual Comprehensive Plan Amendments Threshold Review

City Council tonight:

- Review Planning Commission recommendations under LUC [20.30I.140](#).
- Determine which amendment proposals to include in the Annual Comprehensive Plan Amendment Work Program.
- Refer proposals in the Work Program back to the Planning Commission for Final Review.

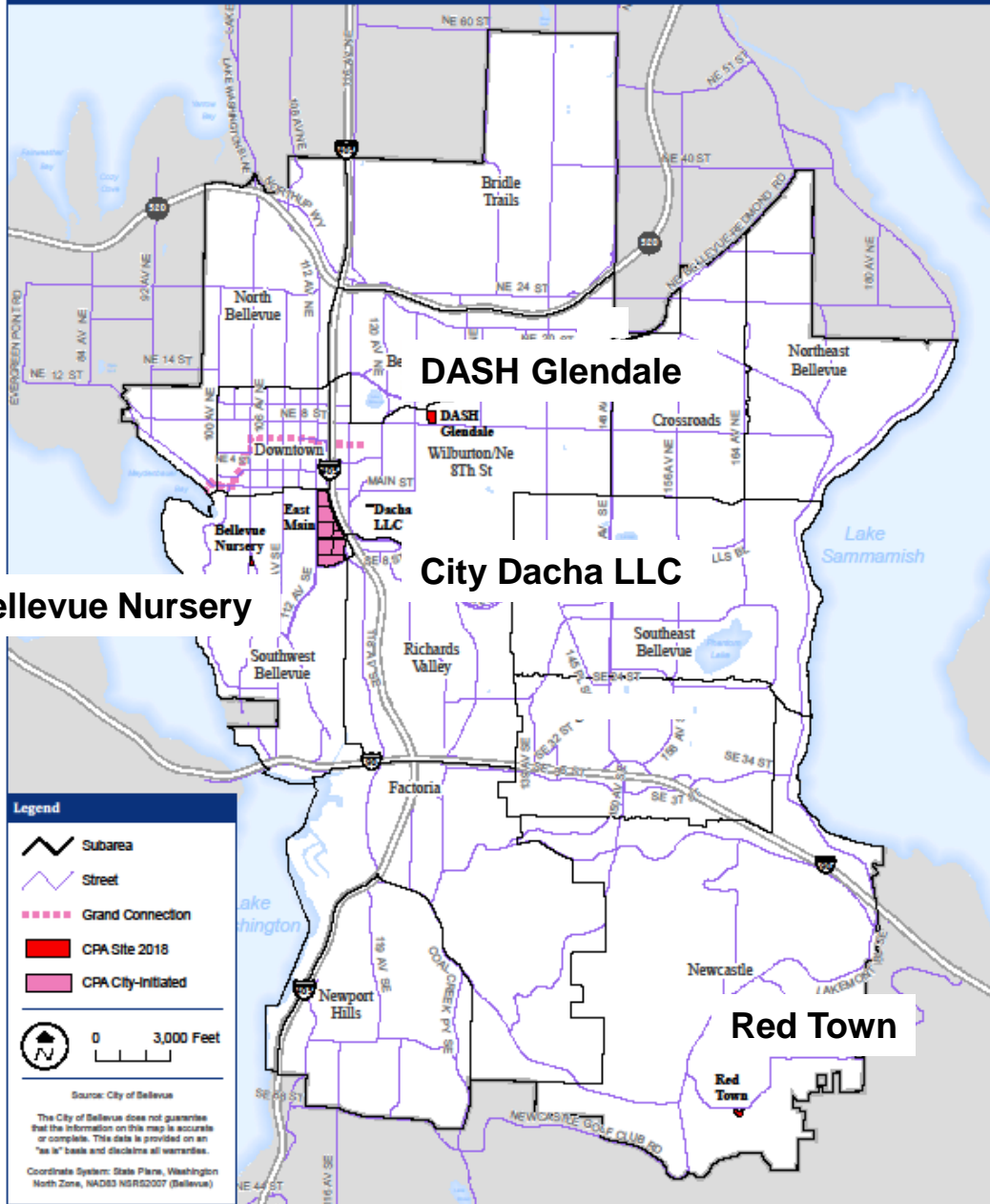


2018 Annual Comprehensive Plan Amendments Threshold Review

Early and Continuous Public Engagement

- Planning Commission study and public hearings on Threshold Review proposals (February-June)
- City Council establishing work program (July)
- Planning Commission study and public hearings on Final Review amendments (August-November)

2018 Comprehensive Plan Amendments

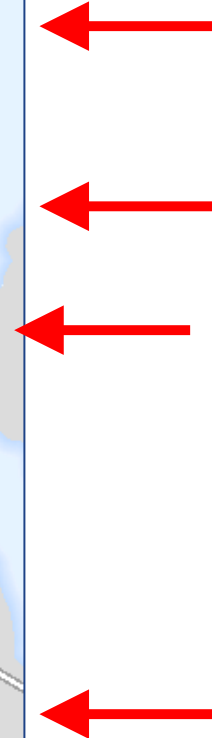


Bellevue Nursery

DASH Glendale

City Dacha LLC

Red Town



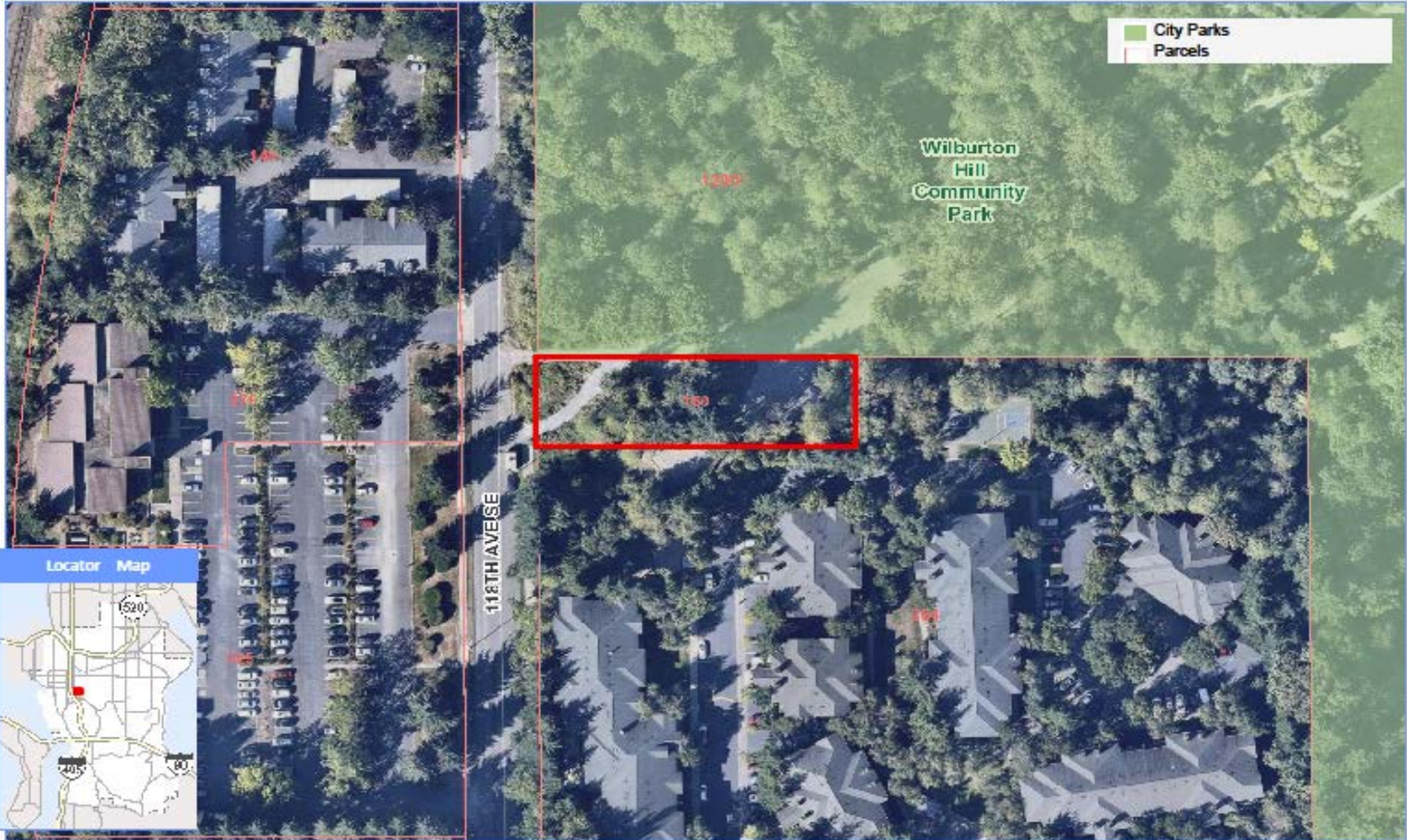
2018 Annual Comprehensive Plan Amendments Threshold Review

Proposed Amendment	Site-specific Proposal and Subarea	Planning Commission Recommendation
City Dacha LLC 17-131046-AC	Proposed site-specific map change of 0.43 acres from Public/ Single Family-Low (P/SF-L) to Multifamily-Medium (MF-M) 160 118 th Ave SE Wilburton	Include in 2018 work program
Bellevue Nursery 18-103877-AC	Proposed site-specific map change of 0.53 acres from Single Family High (SF-H) to Neighborhood Business (NB) 842 104 th Ave SE Southwest Bellevue	Include in 2018 work program
Red Town 18-103926-AC	Proposed site-specific map change of 1.56 acres from Single Family-Medium (SF-M) to Single Family-Urban Residential (SF-UR) 16425 SE Cougar Mountain Way Newcastle	Include in 2018 work program
DASH Glendale 18-103949-AC	Proposed site-specific map change of 7.5 acres from Multifamily-Medium (MF-M) to Neighborhood Mixed Use (NMU) 12600 NE 8 th St Wilburton	Include an expanded site proposal in the Wilburton Study Implementation



2018 Comprehensive Plan Amendments
Planning Commission
Threshold Review Recommendation

City Dacha LLC

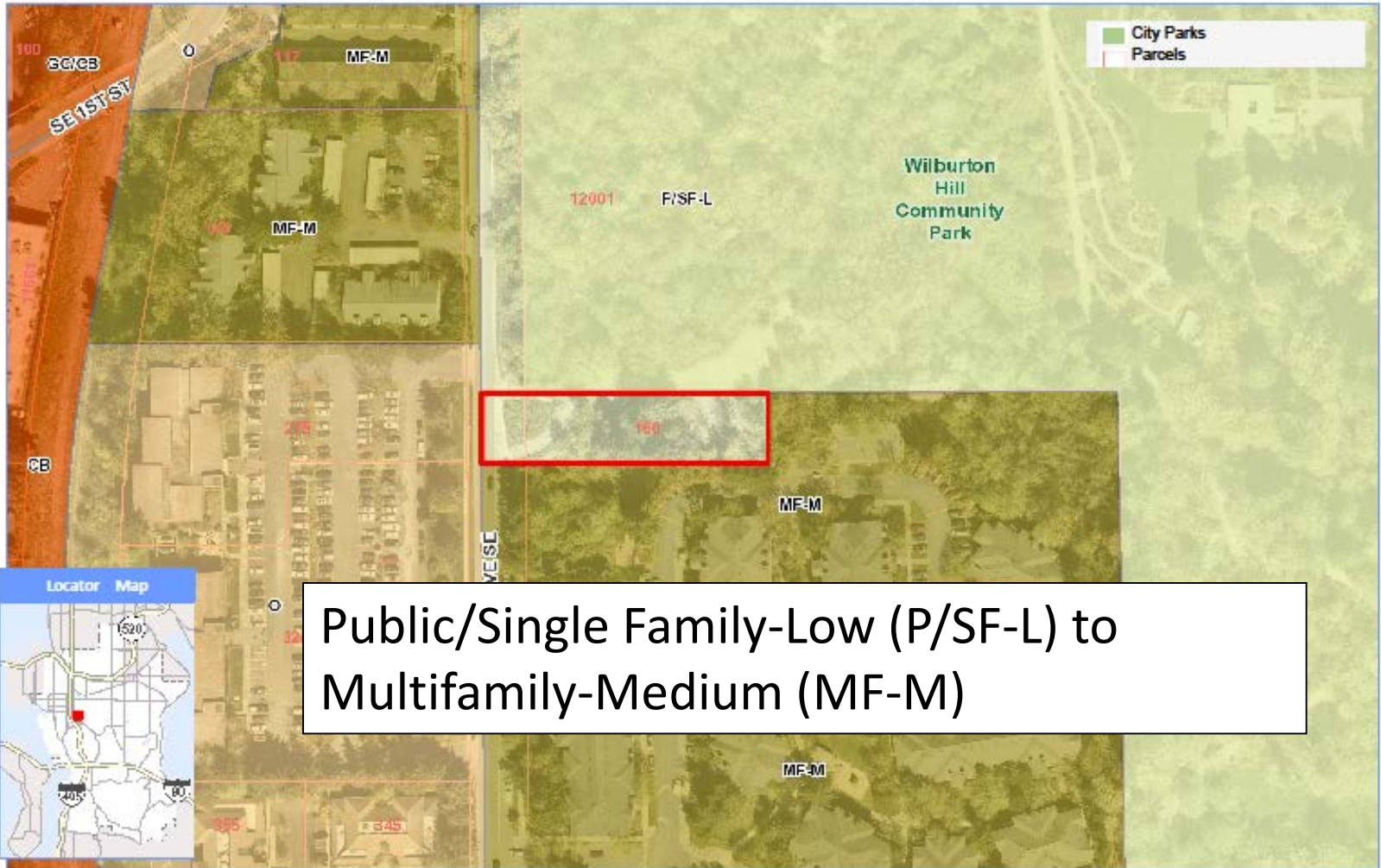


City Dacha LLC CPA




Map Generated on: 02/20/2018

The City of Bellevue does not guarantee that the information on this map is accurate or complete. This data is provided on an "as is" basis and disclaims all warranties.



Public/Single Family-Low (P/SF-L) to Multifamily-Medium (MF-M)


City Dacha LLC CPA

0 134 268
 Scale 1: 1,609 Feet

City Dacha LLC

Planning Commission Recommendation

Approve for Work Program



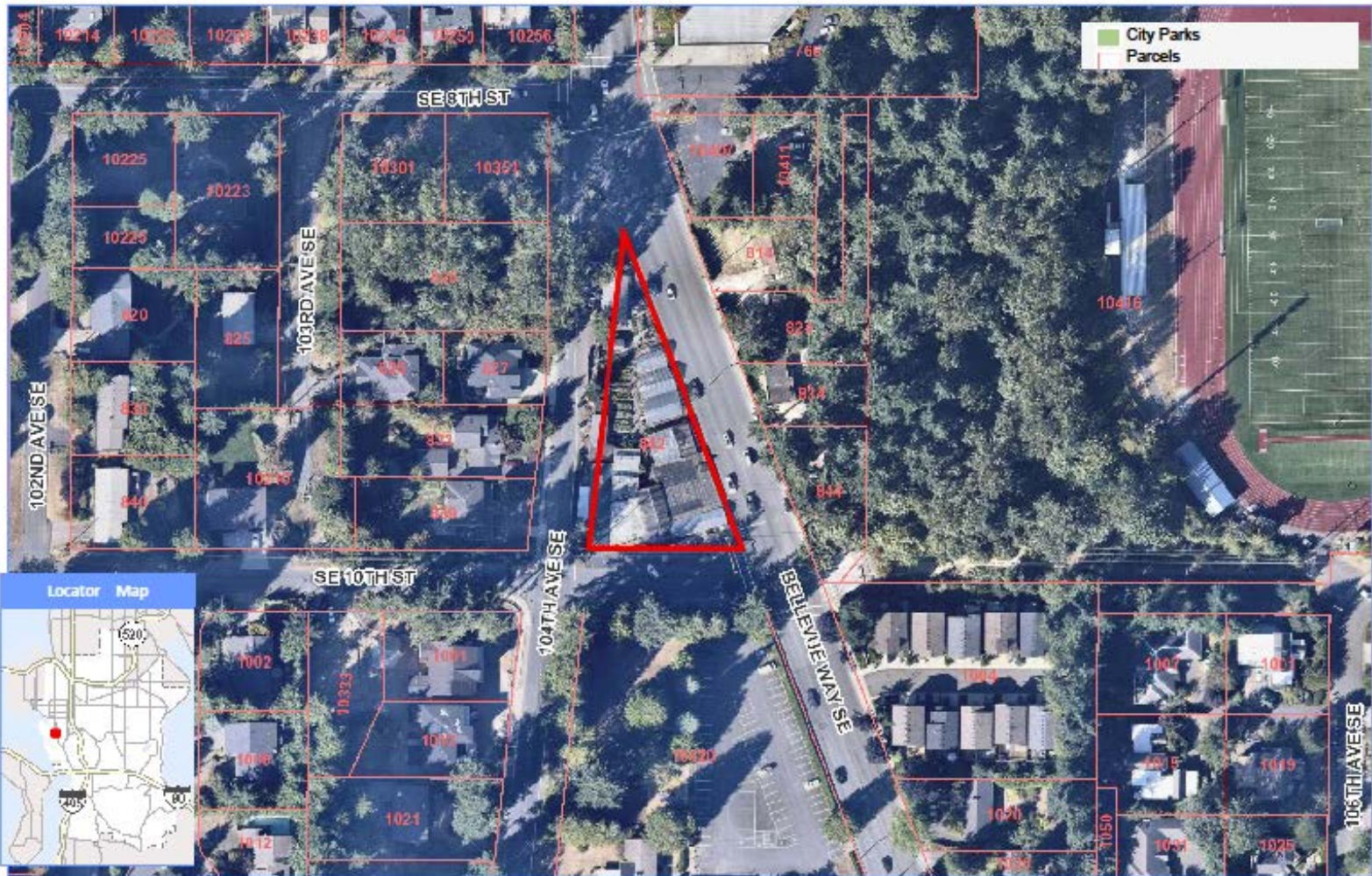
- Consistent with Threshold Review Decision Criteria

Addresses significantly changed conditions since the last time the pertinent Comprehensive Plan map or text was amended



2018 Comprehensive Plan Amendments
Planning Commission
Threshold Review Recommendation

Bellevue Nursery

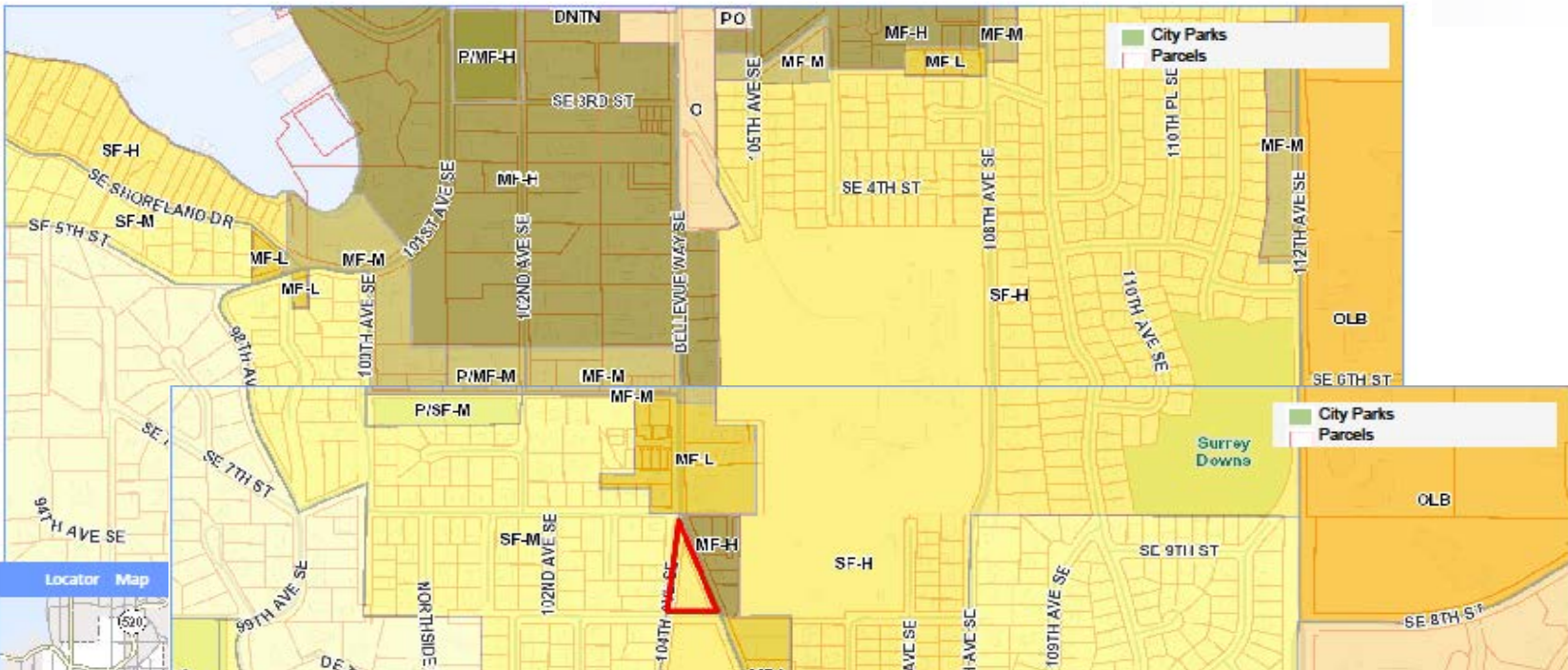


 **Bellevue Nursery CPA**

0 125 251
Scale 1: 1,505 Feet

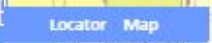
Map Generated on: 02/20/2018

The City of Bellevue does not guarantee that the information on this map is accurate or complete. This data is provided on an "as is" basis and disclaims all warranties.



Map Generated on: 06/1/2011

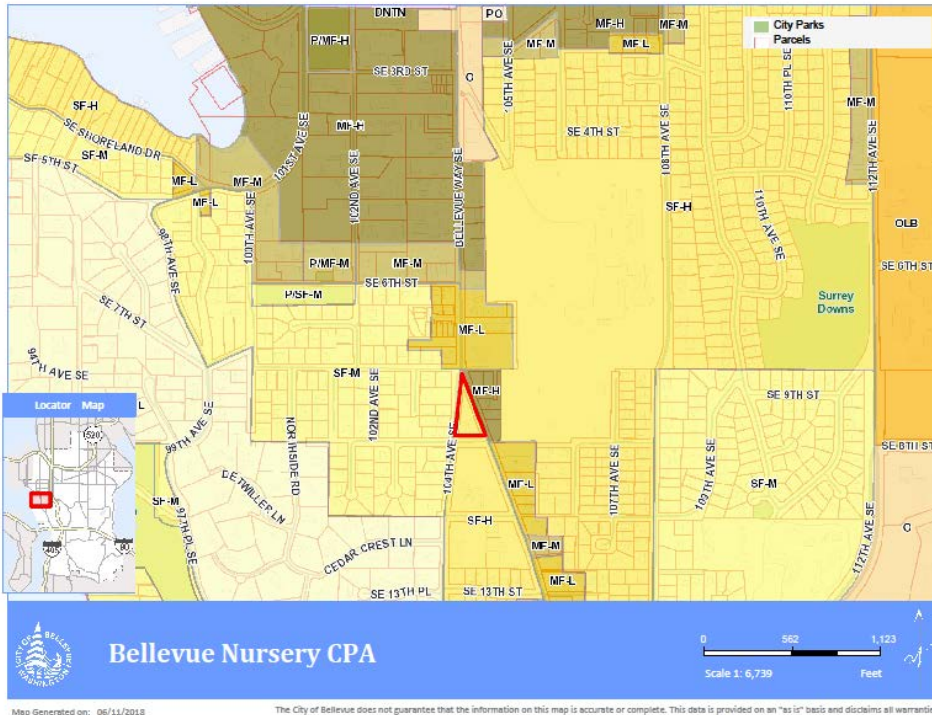
Single Family-High (SF-H) to Neighborhood Business (NB)



Bellevue Nursery

Planning Commission Recommendation

Approve for Work Program



- Consistent with Threshold Review Decision Criteria

Addresses significantly changed conditions since the last time the pertinent Comprehensive Plan map or text was amended



2018 Comprehensive Plan Amendments
Planning Commission
Threshold Review Recommendation

Red Town



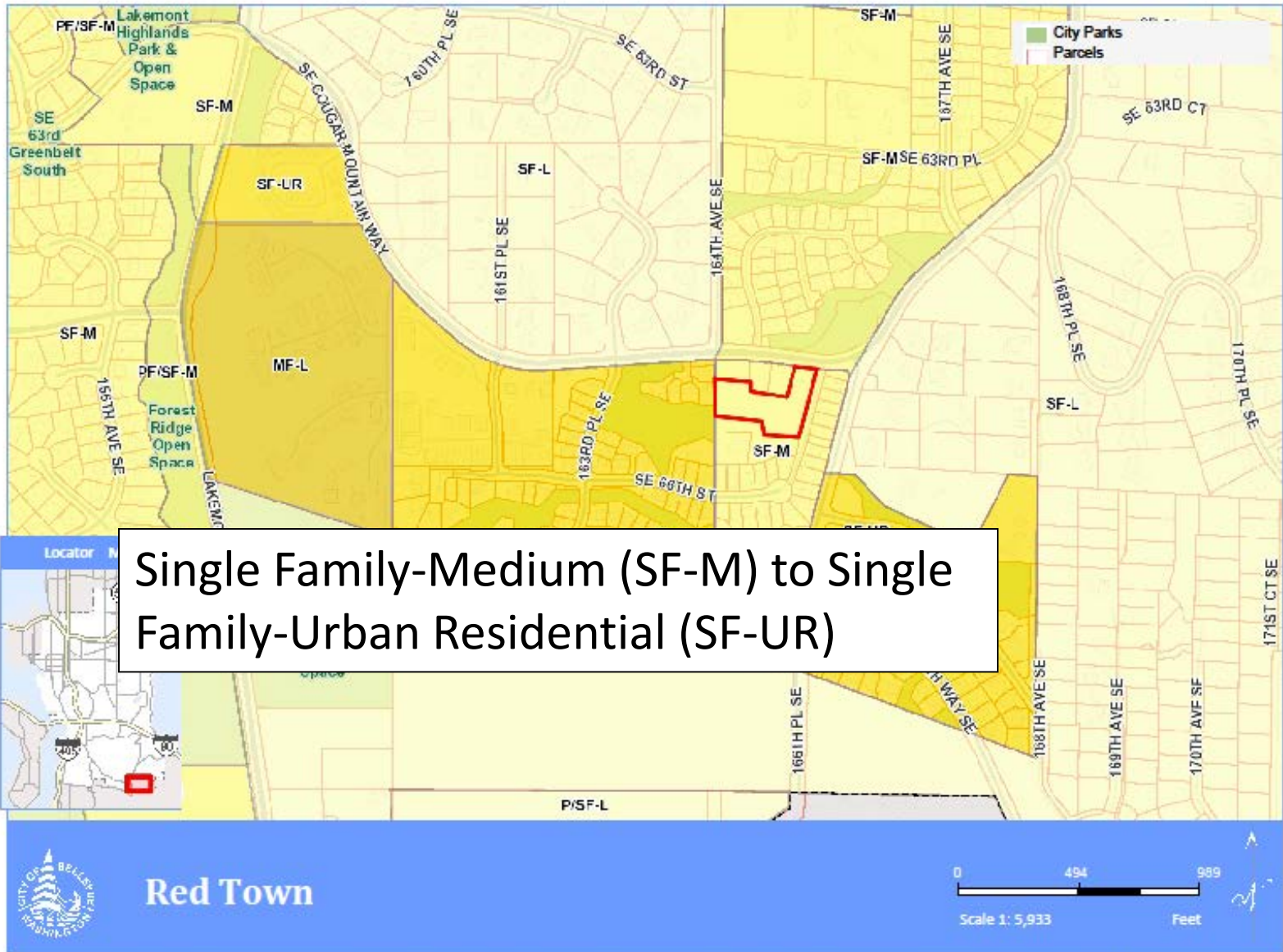
Red Town CPA

Scale 1: 1,607 Feet

0 134 268

Map Generated on: 02/20/2018

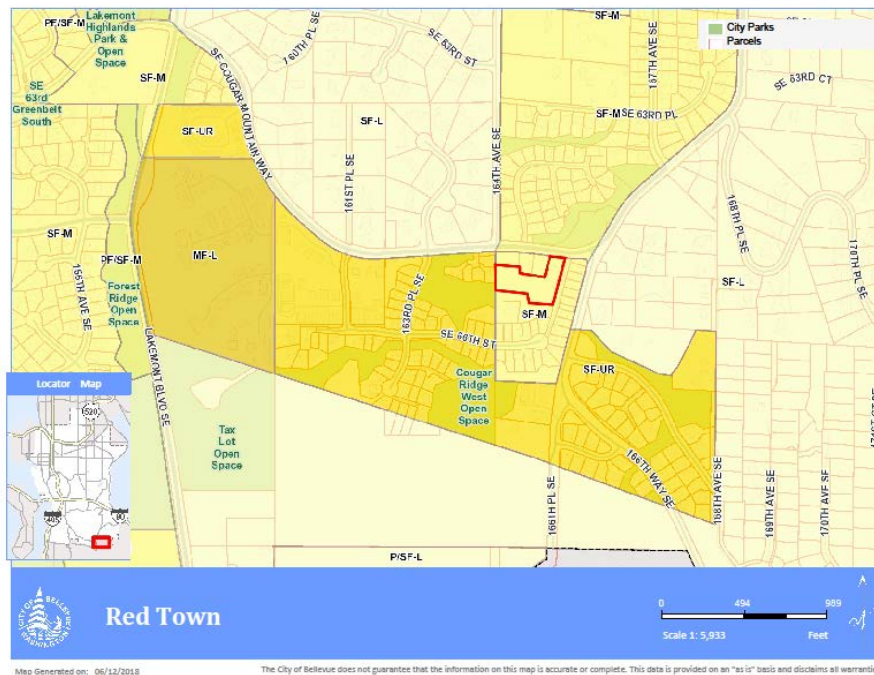
The City of Bellevue does not guarantee that the information on this map is accurate or complete. This data is provided on an "as is" basis and disclaims all warranties.



Red Town

Planning Commission Recommendation

Approve for Work Program



■ Consistent with Threshold Review Decision Criteria

Demonstrated significantly changed conditions on the subject property or its surrounding area where such change has implications that need to be addressed for the Plan to function as an integrated whole



2018 Comprehensive Plan Amendments
Planning Commission
Threshold Review Recommendation

DASH Glendale



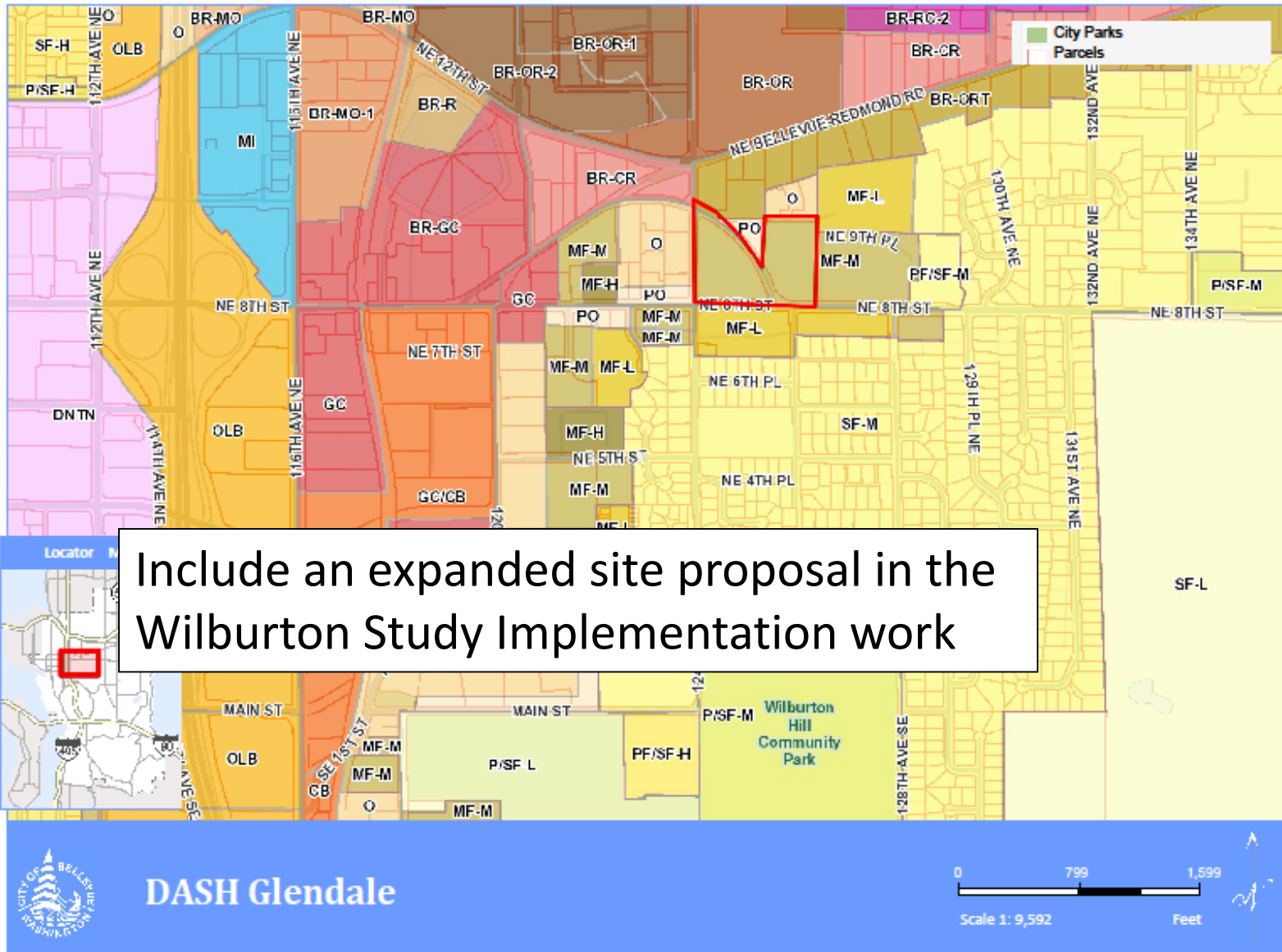
DASH Glendale-EC

Scale 1: 2,300 Feet

0 192 383

Map Generated on: 05/22/2018

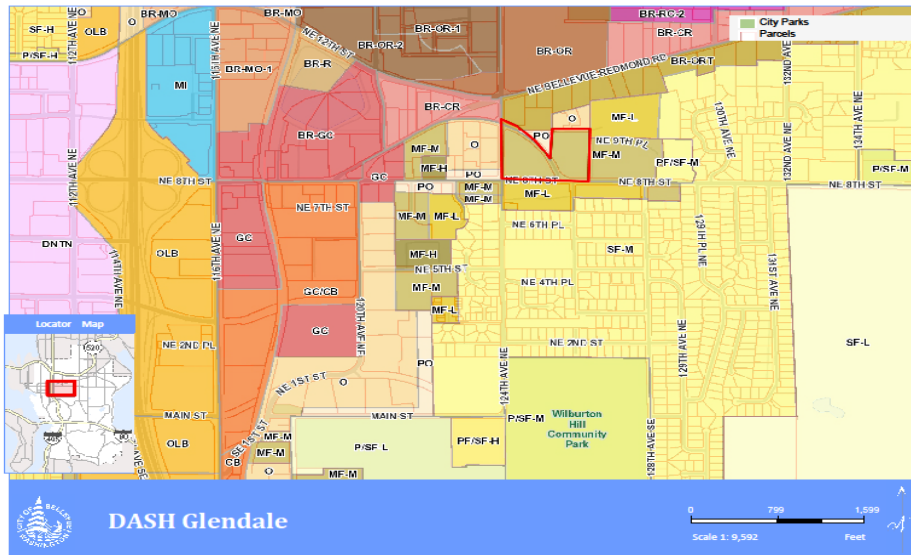
The City of Bellevue does not guarantee that the information on this map is accurate or complete. This data is provided on an "as is" basis and disclaims all warranties.



Include an expanded site proposal in the Wilburton Study Implementation work

DASH Glendale

Planning Commission Recommendation



- ❑ Include the proposal as part of the approved Wilburton Study Area work program implementation using the Wilburton Citizen Advisory Committee Study work program Land Use Preferred Framework.
- ❑ Direct Wilburton Study policy, code, and zoning implementation work to establish land use and densities for the site consistent with CAC vision and principles.



2018 Annual
Comprehensive Plan Amendments
Threshold Review Recommendations

City Council Extended Study Session

July 23, 2018