



Comprehensive Plan Periodic Update

Kate Nesse
Community Development

March 9, 2022

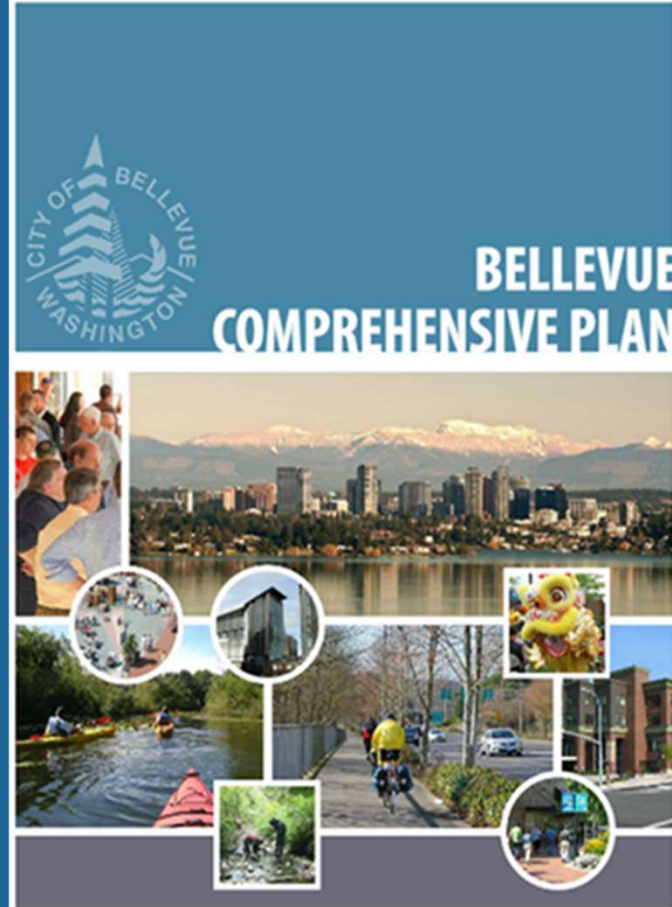




Information

On February 28, Council

- 1) Initiated the Comprehensive Plan Periodic Update
- 2) Directed Planning Commission to manage the update process





Agenda

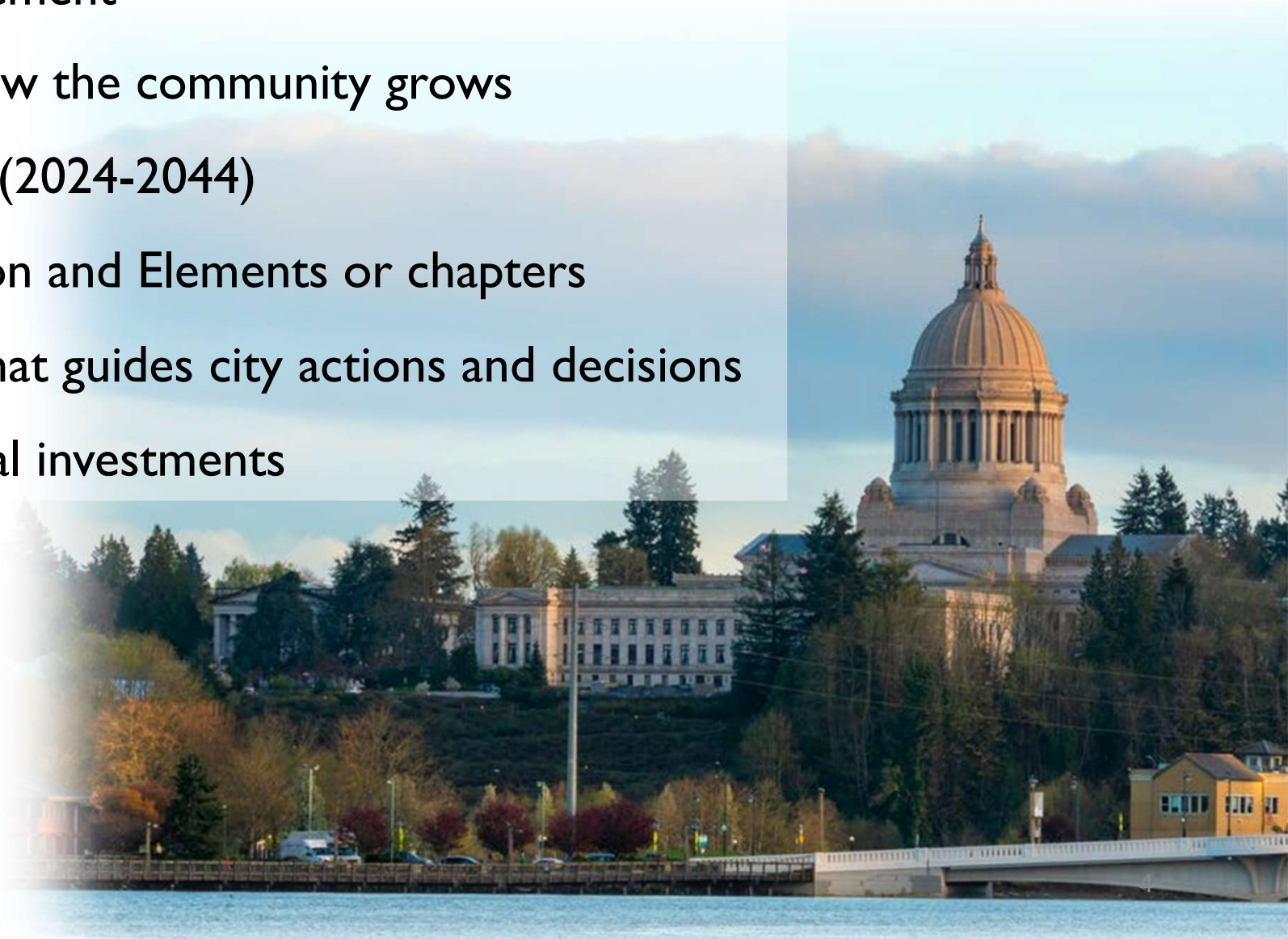
1. Background
2. Current Plan
3. Reasons for the Update
4. Emphasis areas and scope
5. Update Process
6. Community Engagement Strategy
7. Next Steps





What is a Comprehensive Plan

- GMA requirement
- Vision for how the community grows
- 20 year plan (2024-2044)
- Includes Vision and Elements or chapters
- Sets policy that guides city actions and decisions
- Guides capital investments





What is our current plan?

- Vision
- Narrative
- Goals + supporting Policies
- Map of land uses
- Subarea/Neighborhood Area plans



TABLE OF CONTENTS




TABLE OF CONTENTS

INTRODUCTION & VISION	1
CITIZEN ENGAGEMENT	23
LAND USE	33
NEIGHBORHOODS	61
HOUSING	77
CAPITAL FACILITIES	99
UTILITIES	121
TRANSPORTATION	159
ECONOMIC DEVELOPMENT	207
ENVIRONMENT	231
HUMAN SERVICES	273
PARKS, RECREATION & OPEN SPACE	287
URBAN DESIGN & THE ARTS	305
SHORELINE MANAGEMENT	329
GLOSSARY	G-1

CITY OF BELLEVUE COMPREHENSIVE PLAN | TABLE OF CONTENTS



VISION 2050

A Plan for the Central Puget Sound Region



Puget Sound Regional Council



Why update now?

- Remain current and relevant
- Address regional requirements
 - GMA requirements – 8 year periodic update (2024)
 - PSRC Vision 2050 MPP's
 - King County CPPs and growth targets
- Reflect Council's updated vision
 - Housing options and affordability
 - Maintain economic innovation
 - Protecting the environment

Growth Targets: Background

Growth targets are:

- A policy statement about the amount of housing and jobs we plan for in 2024 comprehensive plans
- For at least a 20-year period (2019-2044)
- Created collaboratively by all cities and King County
- Adopted as part of the CPPs





Adopted Growth Targets:

- Metropolitan job center and regional collaboration
- Downtown Bellevue is an Urban Growth Center
- Achieving a more equitable jobs/housing balance – 2:1 from 2.4:1
- Planning to address growth: Periodic update, other initiatives

	Housing Units	Jobs
Existing Inventory	65,194	155,031
	Net New Housing Units 2019-2044	Net New Jobs 2019-2044
Target	35,000	70,000
Existing Capacity	26,859	117,241

Focus of the Update

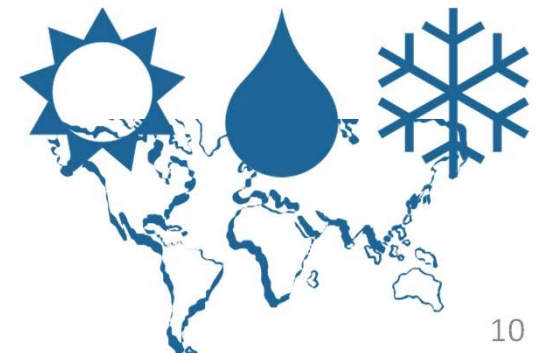


- Plan for growth: Land Use Map amendments + broader categories, and Countywide and Regional Centers
- Expand housing options, access to affordable housing, and approaches to combat homelessness
- Create vibrant places at a variety of scales and locations
- Equitable approaches with a focus on underserved and underrepresented community members
 - Diverse and inclusive engagement
 - Displacement considerations
 - Legacy of discrimination: education and response
- Emphasize environmental sustainability and resilience
- Set the stage for future planning

Focus of the Update

Areas of emphasis:

- Update the land use map and/or policy changes to plan for adopted growth targets;
- Amend the housing element to align with CPPs and affordable housing;
- Policies that address the legacy of discrimination;
- Update policies to manage growth in the City's Centers: Countywide and Regional Centers;
- Consistent, equitable outreach and engagement with diverse communities;
- Address climate change requirements
- Broader land use map designations





Update Process

Two year process with an EIS and three phases:

Phase 1: Vision Update and Alignment

Phase 2a: Draft Land Use Alternatives

Phase 2b: Analyze and lay the foundation

Phase 2c: Growth-Related policy updates

Phase 3: Revise and refine

Community Engagement Strategy



YEAR	TIME	PHASE	FOCUS
2022	Mar-Apr	1	Affirm the Vision
	May-Jul	2a	Explore Livability
	Sep-Nov	2b	Lay the Foundation for Future Planning
2023	Jan-Mar	2c	Explore Growth Alternatives
	Jul-Oct	3	Refine Plan & Policies

Streams of Engagement



Types of Outreach Activities

Direct

- Mailed questionnaire to all households
- Mailed announcements

On-Demand

- Engaging Bellevue Website
www.engagingbellevue.com
 - Ask questions
 - Provide input – surveys, ideas, discussion
 - Download information

In-Person/Virtual

- Community workshops
- Presentations on request
- Tabling in the community

Equity

- Cultural Outreach Ambassadors
- Material Translated
- Multi-lingual outreach





Next Steps

Upcoming meetings in 2022

June – (Direction) Public input and vision updates

September – (Direction) Draft land use alternatives

December – (Direction) Policy update analysis



Information

On February 28, Council

- 1) Initiated the Comprehensive Plan Periodic Update
- 2) Directed Planning Commission to manage the update process

