



City of Bellevue

# Parks & Community Services **2027-2028 Budget Process** **Current CIP Project Overview**

**Jenny Zheng, PCS Fiscal Manager**

**Wyatt Thompson, Planning & Development Manager**

Parks & Community Services Board  
April 15, 2026

# Agenda



- Budget Process Overview
- Timeline and Structure
- Parks & Community Services Board Role
- Break for Questions
- Capital Improvement Program Overview
- Capital Project Update
- Questions and Comments

# Budget Overview

## City Council Strategic Target Areas

Vibrant Economy

Safe & Efficient Transportation System

High Quality Built & Natural Environment

Community Safety & Health

Thriving People & Communities

High performance Government

# Budget Process Timeline

**May 1**  
Proposals due to Budget  
Office



**May - August**  
Proposal Evaluation & Packaging



**September**  
Prelim Budget to Council



**October**  
Council Deliberation



**November**  
**Council Budget Adoption**

# 2027-2032 CIP Budget Structure

- 6-year CIP Spending Plan (2027-2032)
- New this year: CIP Projects categorized into four Programs within a Parks Portfolio
- New this year: Long Range Planning Reserve for property acquisition
- No new CIP funding expected for projects

# PCS Board Role

- Typical Budget Role – Advisory to Council on Parks Capital Needs
- Review Parks CIP Strategy
- Develop a PCS Board communication to Council

# Next Steps

---

**April**

Review CIP  
Program /  
Project List



**June-July**

Draft PCS  
Board Memo  
for Council



**September**

Transmit PCS  
Board  
Comments to  
Council



Thank You!

Questions?



# **2026 Capital Projects Update**

---

# Planning, Design & Project Management (PDPM) Team

## Capital Projects

- Ariel Mieling
- Aubrey Weeks
- Ernie Podaca
- Scott Vander Hyden
- Susan Ulep
- Wyatt Thompson
- Zachariah Collom
- Zarrian Smith

## Planning

- Betsy Anderson
- Ryan Walker

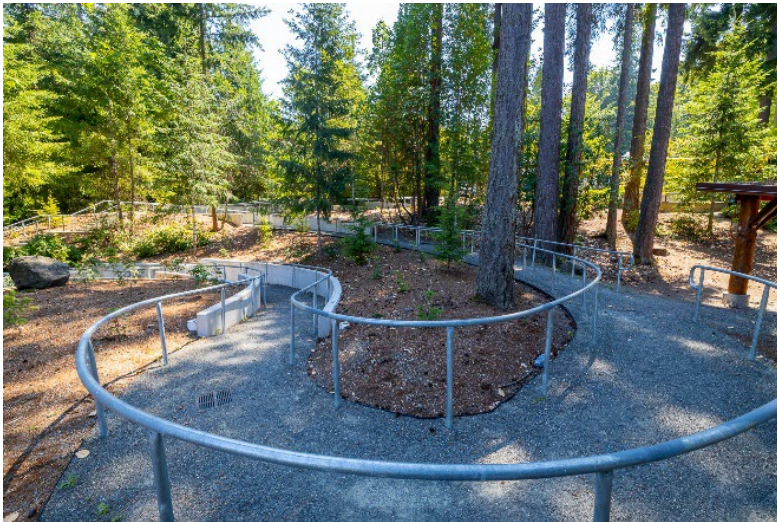
## Property Management

- Kim Bui
- Pamela Kindred
- Stephanie Dompier

## Assistant Director

- Camron Parker

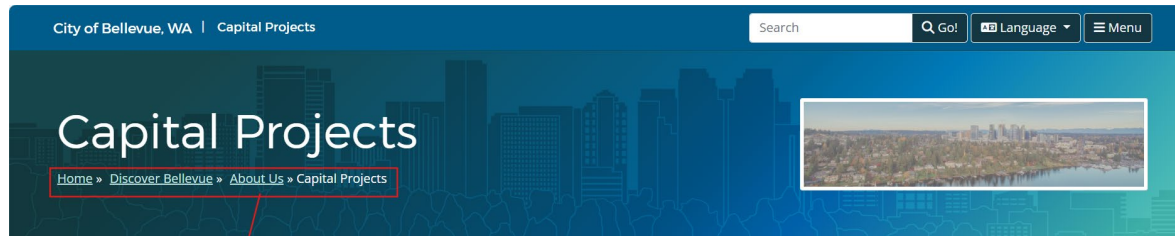
# Award Winning Work ~ WRPA



- The Eastgate Pedestrian Pathway won this year's WRPA award for trails
- Bellevue Adventure Park won in the category of parks outdoor space

# Parks Capital Projects Dashboard

- Capital Projects Dashboard



## About Us

- Awards
- Careers
- City Holidays
- Communications and News
- Contact Us
- Diversity Advantage
- Hot Topics and Initiatives
- Bellevue Growing Together
- Capital Projects**

Curious about a capital project in Bellevue, such as an Bellevue valued at least \$100,000. Tap on any of the project (column) and get the following information:

- Project description
- Project manager contact information
- Estimated project start and stop dates

[View Capital Projects Dashboard](#)

## Reasonable Accommodation

For alternate formats, interpreters, or reasonable modifications, email [servicefirst@bellevuewa.gov](mailto:servicefirst@bellevuewa.gov). For complaints regarding Opportunity Officer at [ADATitleVI@bellevuewa.gov](mailto:ADATitleVI@bellevuewa.gov).

**Capital Projects**

Est. Start Year: 2000 - 2040 | Est. End Year: 2000 - 2040 | Filter By Project Phase: No category selected | Filter by Department: Parks & Community Services

**Active Projects**

- Aquatic Center Planning and Design
- Ashwood Park Planning and Design
- Bellevue Airfield Park Planning and Design
- Bel-Red Park Planning and Design
- Chism Beach Park Shoreline Restoration
- Clyde Beach Park Shoreline Renovation
- Eastgate Neighborhood Park Planning and Design
- Enatai Neighborhood Park Improvements
- Forest Drive Trailhead Improvements
- Hidden Valley Park Play Equipment Replacement
- Kelsey Creek Park Restroom Relocation
- Lake Sammamish Neighborhood Park Acquisition and Development

**Project Details**

Selection required on one or more elements

**Projects Completed Last Year**

0

**Phase (Active Projects)**

Construction 1 | Planning 1 | Design 16

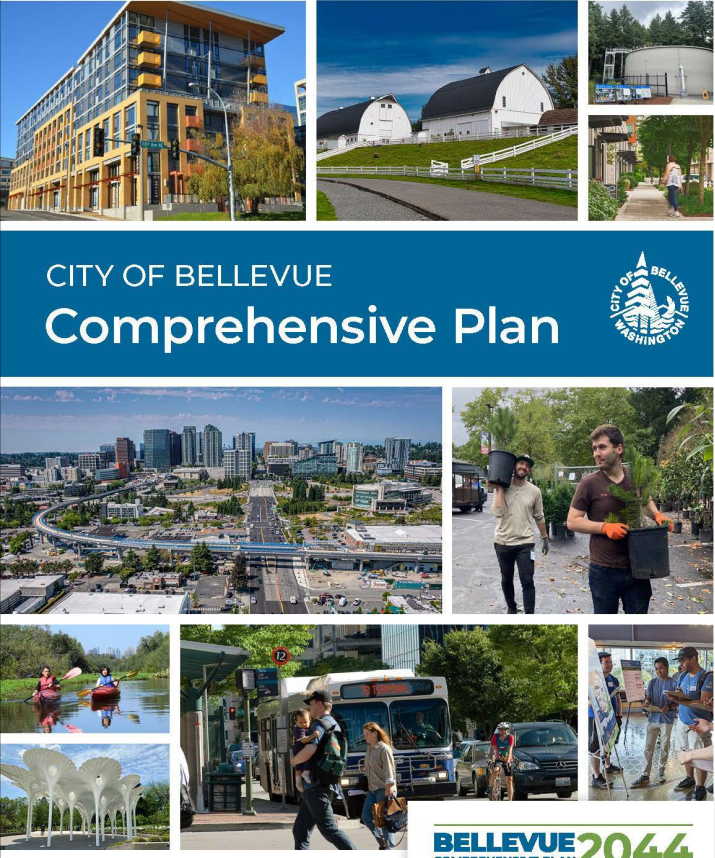
Tap on the chart to filter the map.

# Annual Parks CIP Funding


- 2022 Parks & Open Space Levy
- 2008 Parks & Natural Areas Levy
- 2026 King County Parks Levy
- Real Estate Excise Tax (REET)
- Project Specific Leveraging – grants, partnerships, donations & developer fees




# Long-Range Planning



CITY OF BELLEVUE  
**Comprehensive Plan**



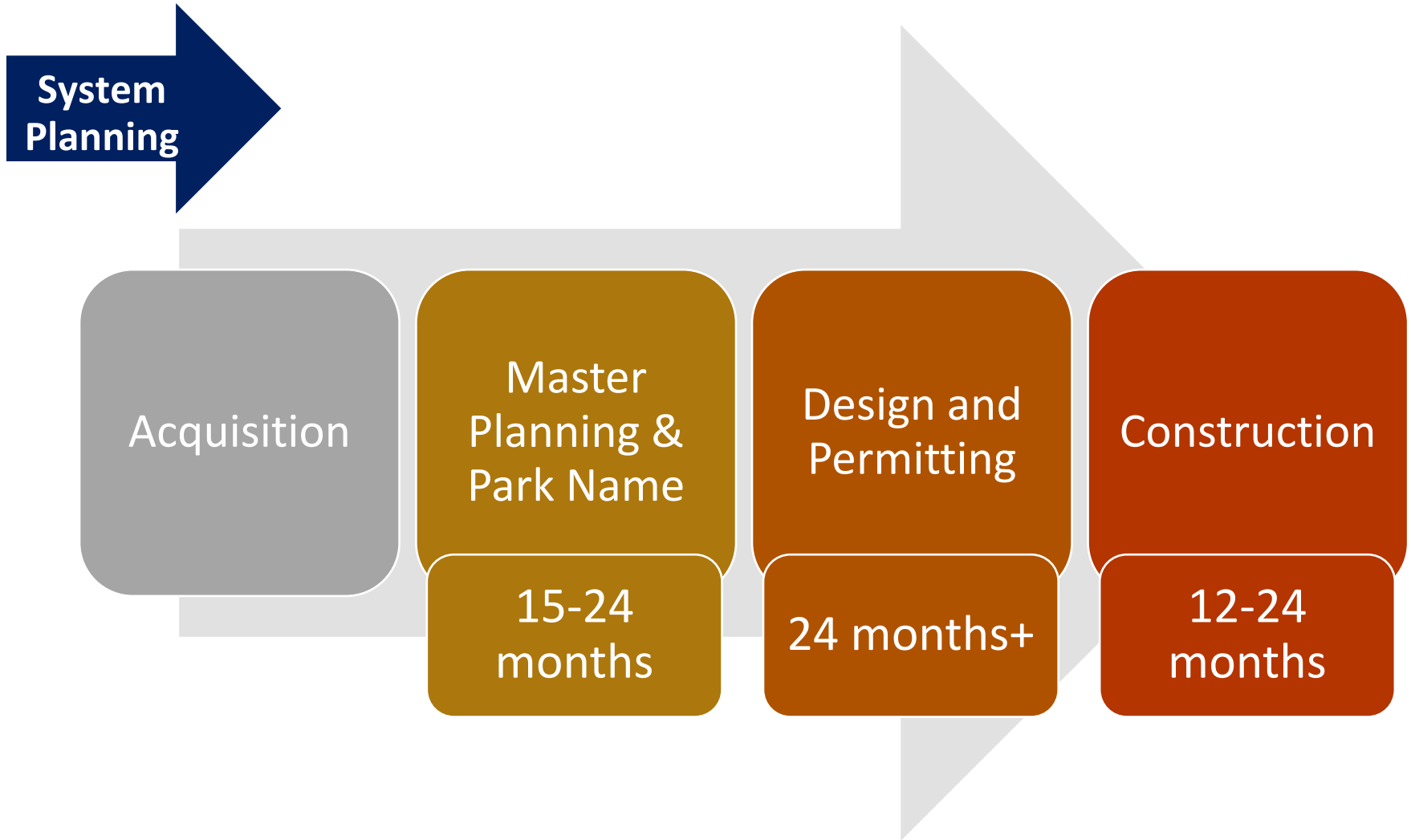
**BELLEVUE 2044**  
COMPREHENSIVE PLAN  
Building A Livable City for All



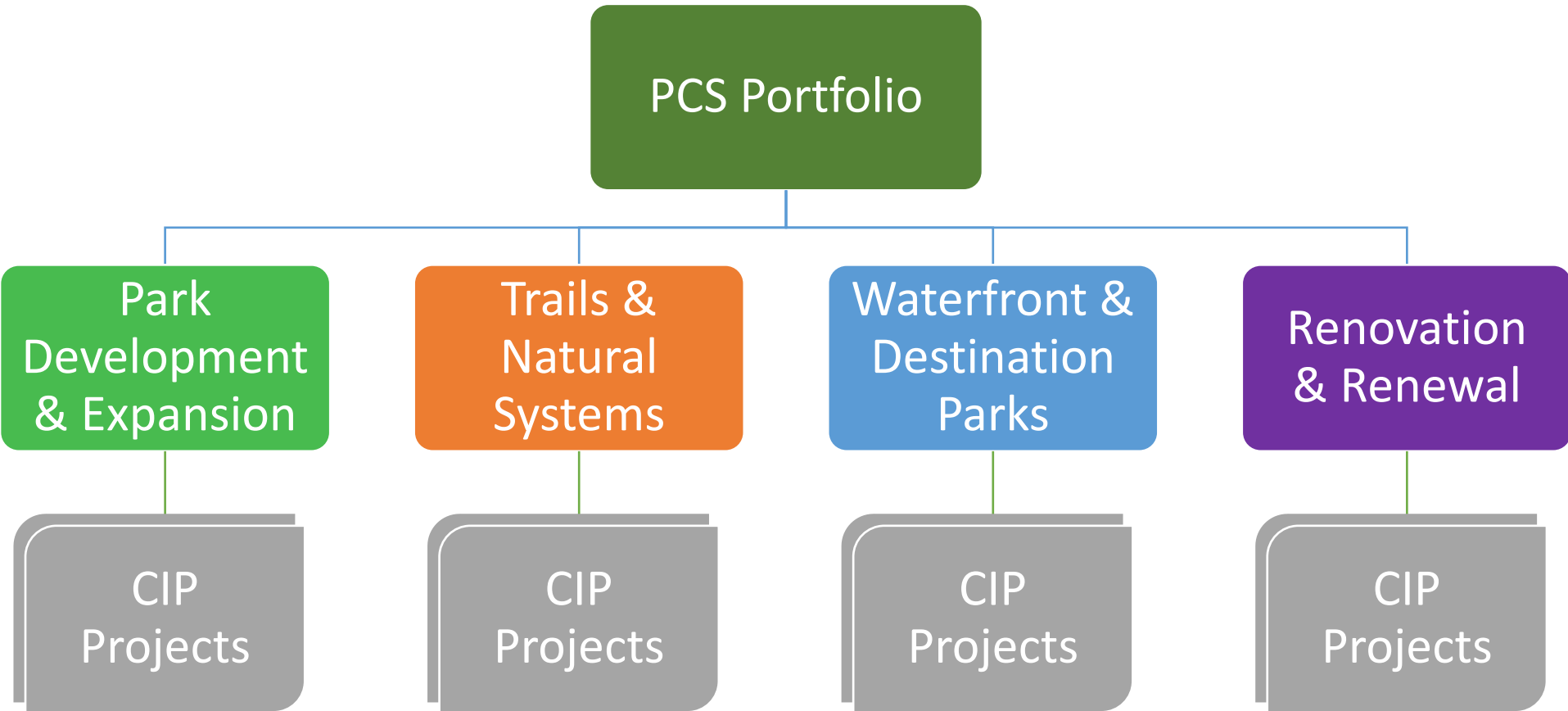
Bellevue Parks & Community Services

Bellevue Parks and Open Space  
System Plan 2022

# Park Development Process



# Parks CIP Organization



# Park Development & Expansion

## Program Purpose

- Expand and enhance the park system by building new parks and facilities and by making major enhancements to existing parks that add or change primary program elements.

## Program Impact

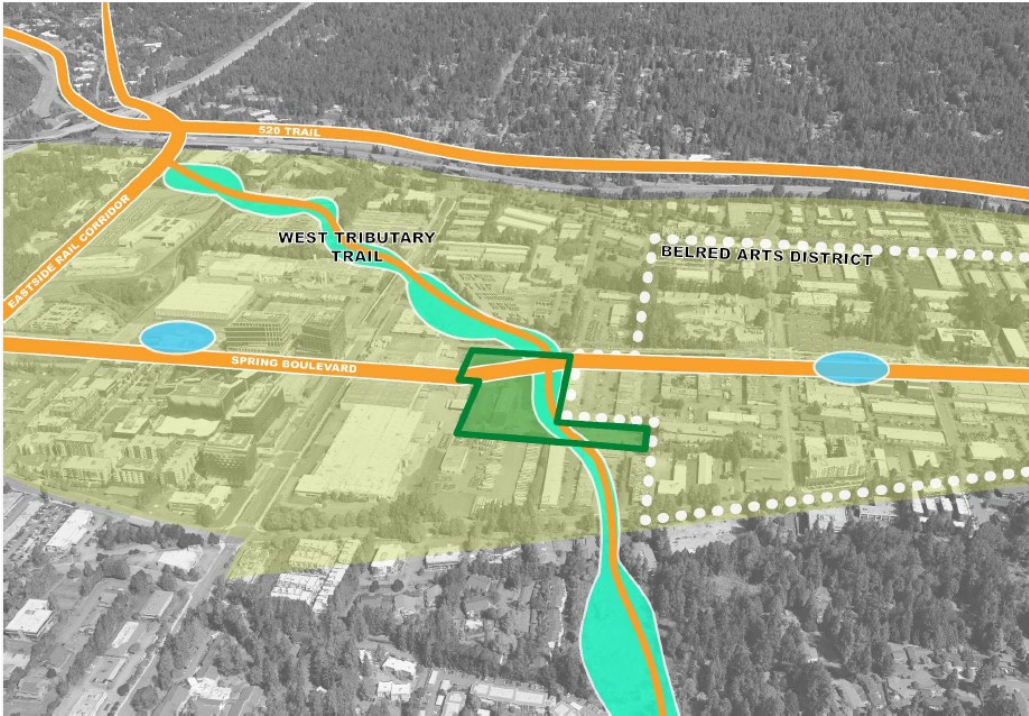
- Parks and Open Space System Plan emphasizes acquisition and development of parks to meet future demand and geographic equity.

## Portfolio Snapshot

- 6 CIP projects in planning, design, and construction.
- 3 CIP projects are pending.

# Bel-Red Parks & Streams

CIP P-AD-103



# Ashwood Park Development

CIP P-AD-107

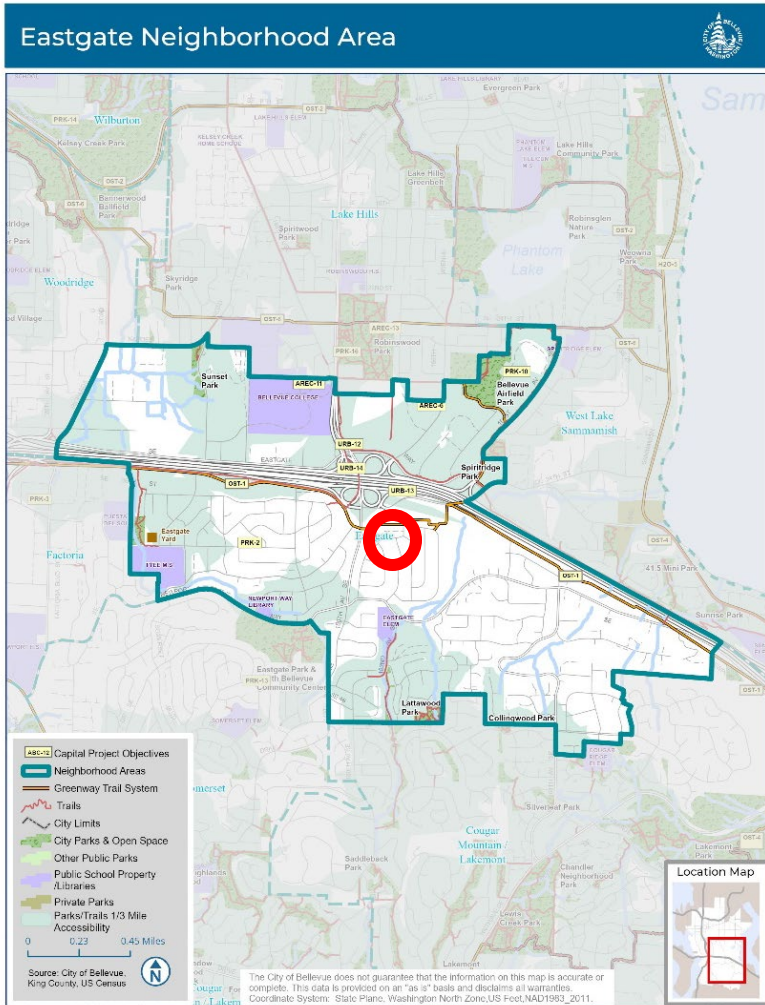


- LEGEND:**
- ① Parking Lot
  - ② Off-Leash Area
  - ③ Shelter
  - ④ Play Area
  - ⑤ Restroom
  - ⑥ Picnic Shelters
- ⑦
  - ⑧
  - ⑨
  - ⑩
  - ⑪
  - ⑫



# Eastgate Neighborhood Park

CIP P-AD-109



Date: 12/27/2022 File Name: V:\Parks\ArcGIS\Pro\Map\Jan2022\NeighborhoodArea\Map\NeighborhoodAreaMaps\_POS\PSep2022\_8x11\NeighborhoodArea\Map\_POS\2022\_8x11\_MapSeries.aprx

# Off-Leash Areas & Emerging Sports Facilities

CIP P-AD-111

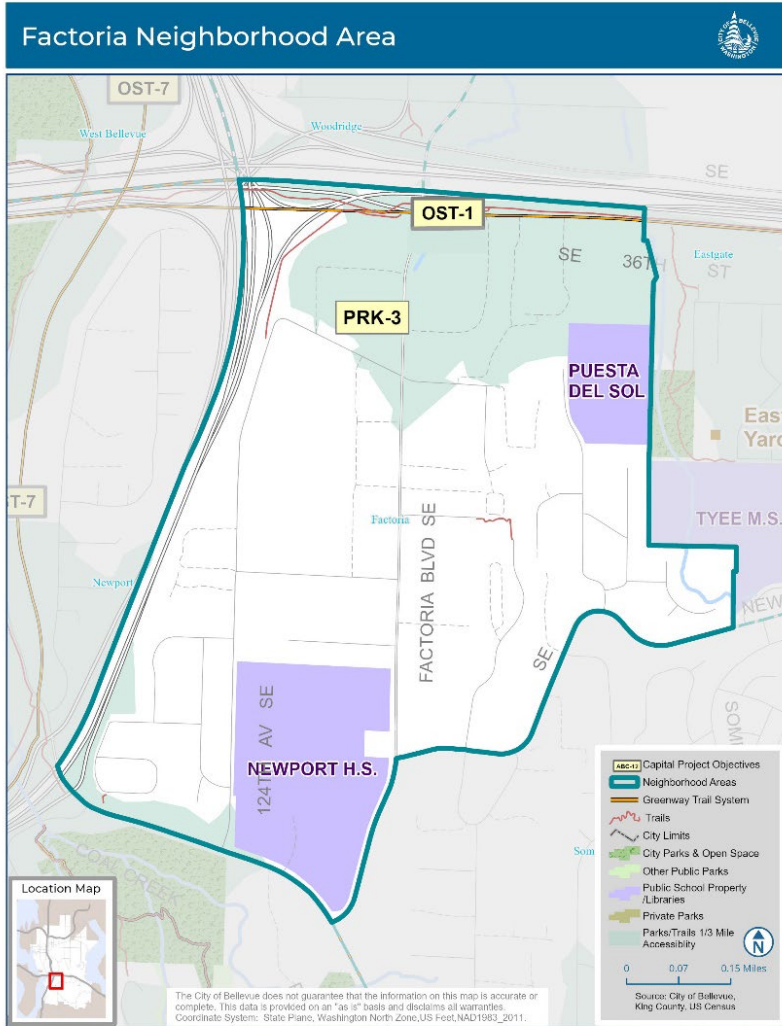


- Permanent OLA @ Wildwood, Wilburton, Crossroads, Robinswood, Newport Hills.
- New pop-up OLA in planning for this year.

- Robinswood turf field is complete

# Factoria Neighborhood Park

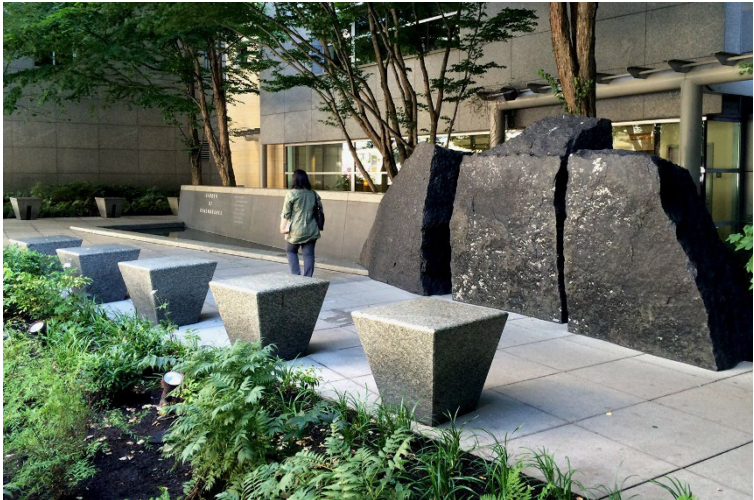
CIP P-AD-110



Date: 10/11/2022 File Name: V:\Parks\ArcGIS\Proj\ParkPlan2022\NeighborhoodArea\Map\NeighborhoodAreaMaps\_POSEP2022\_Sk11\NeighborhoodAreaMaps\_POSEP2022\_Sk11\_MapSeries.aprx

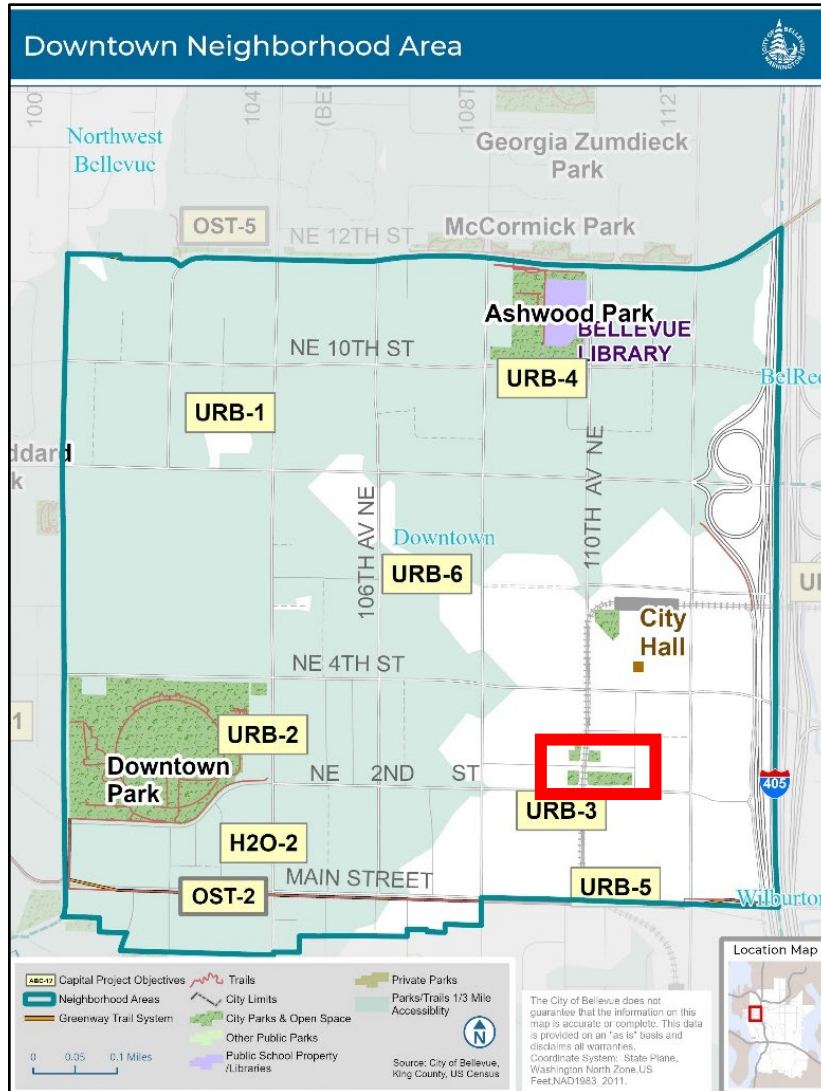
# Japanese American Legacy Project

CIP P-AD-115



# NE 2<sup>nd</sup> St Downtown SE Neighborhood Park

CIP P-AD-117



# Wilburton Parks & Streams

CIP P-AD-118



# Parks Operation Facility

CIP G-117



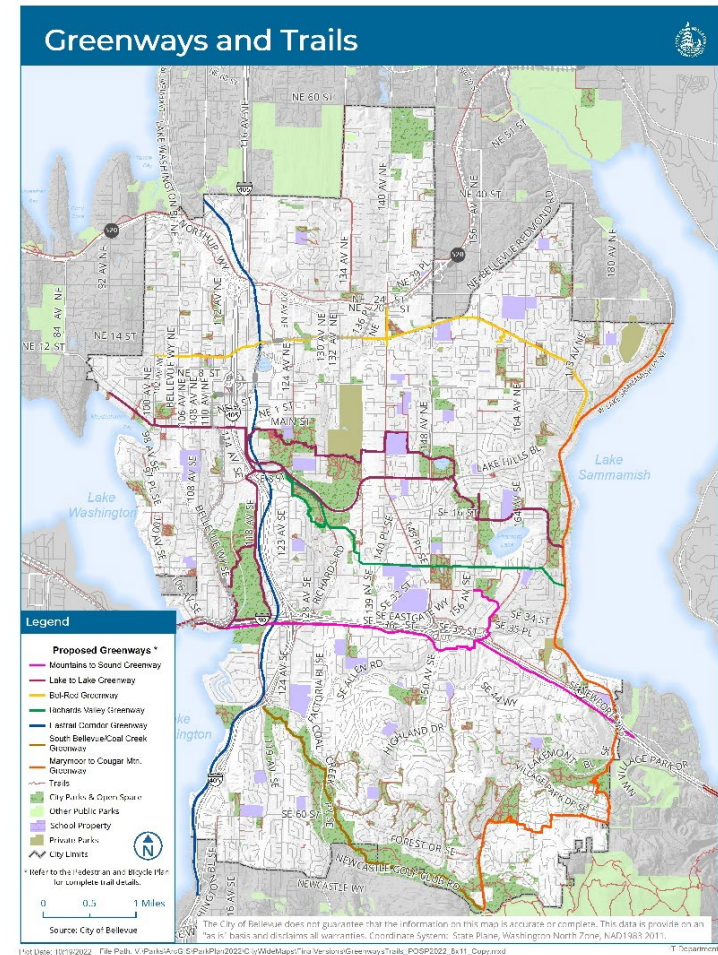
# Trails & Natural Systems

## Program Purpose

- Expanding and enhancing the city's 90 miles of trails across the city.
- Improving access, mobility, and environmental resilience

## Program Impact

- Enhancing resident access and supporting active transportation





## Portfolio Snapshot

- 6 active projects in planning, design, and construction
- Focused on closing gaps, increasing walkable access, broadening access to more users, and connecting to Eastrail

# Waterfront & Destination Parks

## Program Purpose

- Develop new or improve existing waterfront parks.
- Enhance the city's signature parks.

## Program Impact

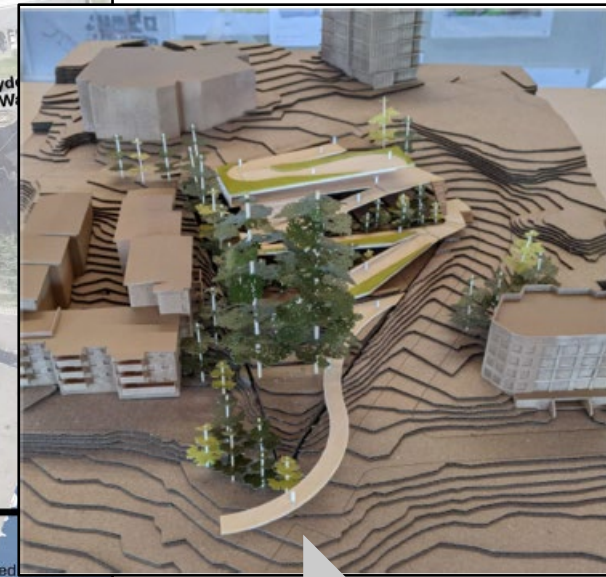
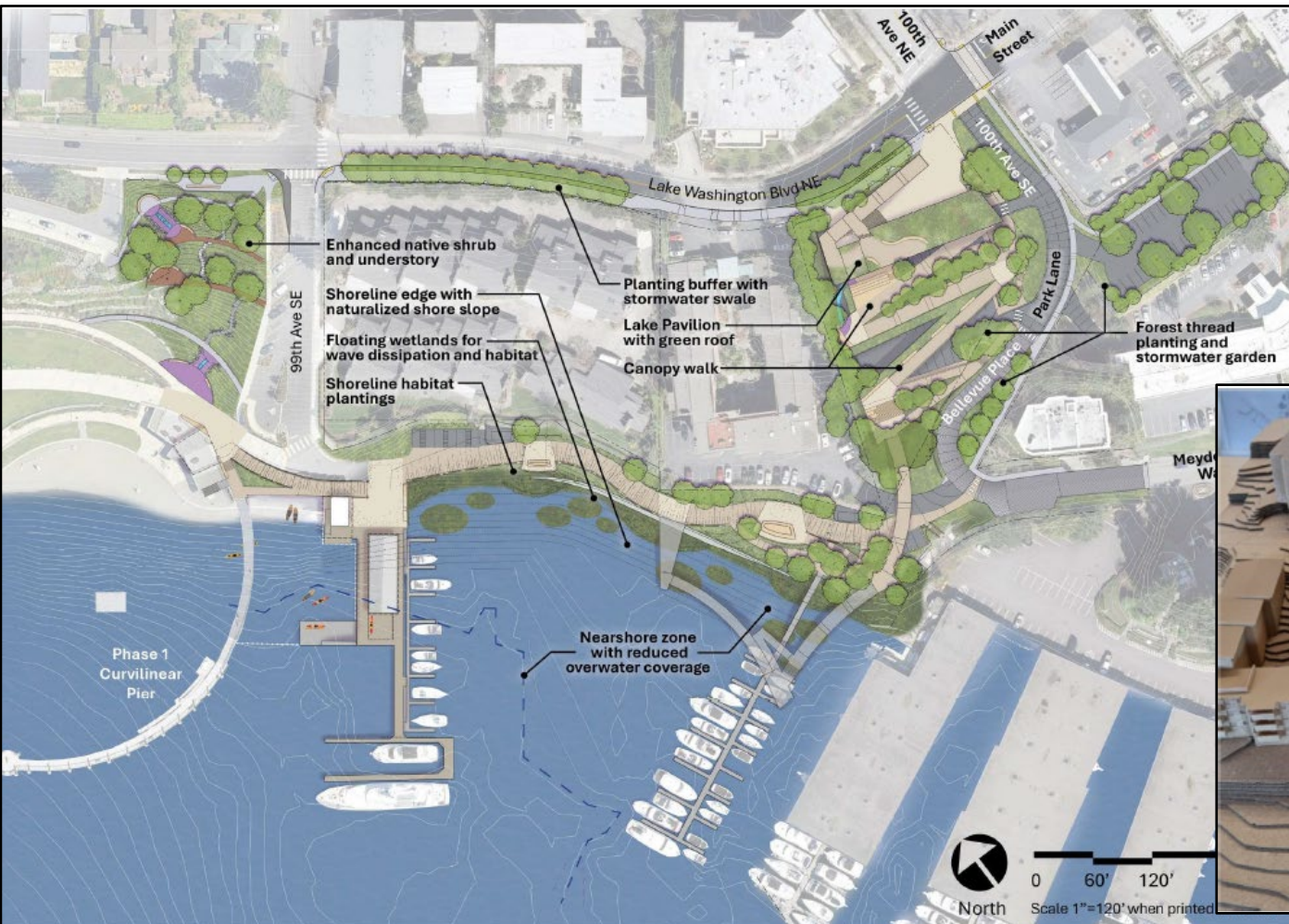
- Enhancements at waterfront and destination parks are highly visible and valued by the community.

## Portfolio Snapshot

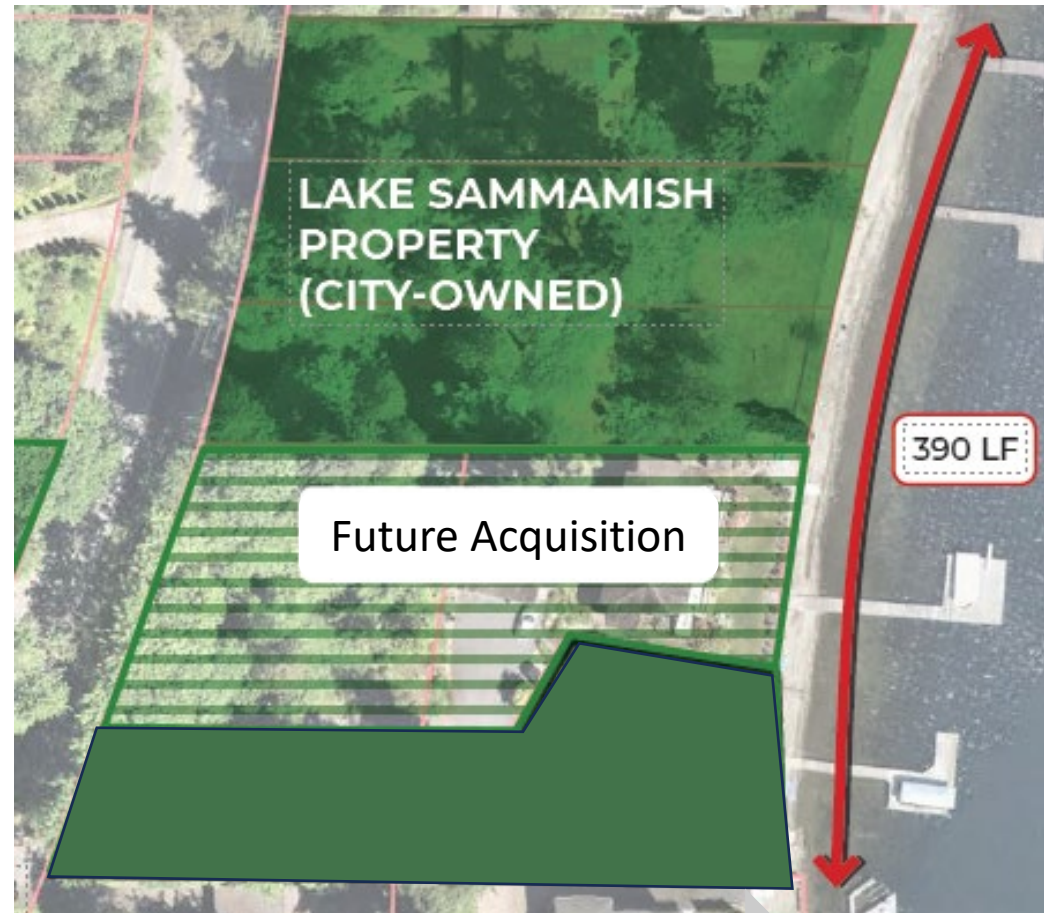
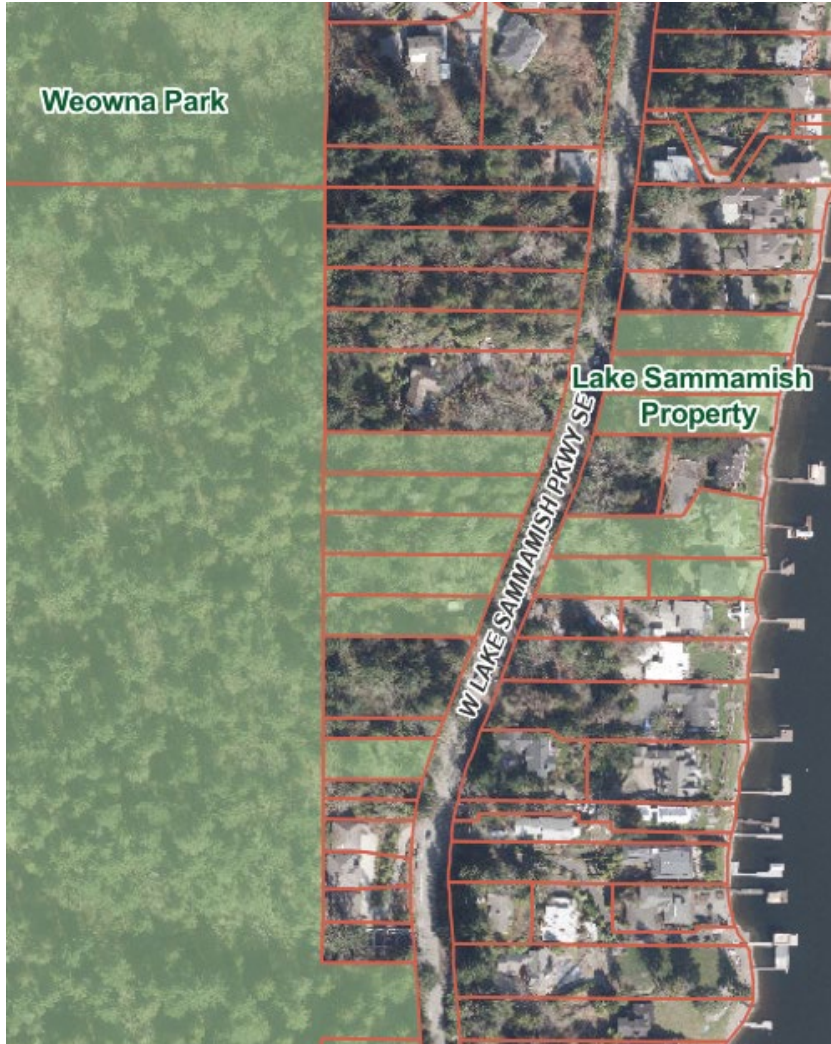
- 5 active CIP projects in planning, design, and construction.
- 2 CIP projects are pending.

# Meydenbauer Bay Park Phase 2

CIP P-AD-104



# Lake Sammamish Neighborhood Park CIP P-AD-106



# Park Shoreline Restoration

CIP P-AD-114



# Bellevue Airfield Park Development

CIP P-AD-83



2008  
Levy

Picnic Area



Trails

Flex Field

Pickleball

Play

Aquatics

Shared  
Parking

# Aquatic Facility Design

CIP P-AD-108



130,000sf

5 bodies of water

- 50m competition pool
- Deep-water tank
- Program pool
- 8,000sf leisure pool
- Therapy pool



Dry side spaces

- Fitness
- Therapy
- Meeting

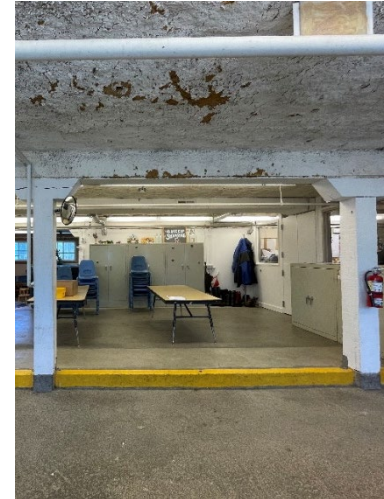
# BBG Design and Development

CIP P-AD-113



# Kelsey Creek Farm Major Renovation

CIP P-AD-116



# Renovation & Renewal

---

## Program Purpose

- Improve existing parks and facilities.
- Deliver non-routine or larger projects than can be accomplished with regular maintenance and do not significantly alter a site's program or purpose.

## Program Impact

- A large, aging park system requires ongoing renovation and refurbishment to meet community needs and expectations.

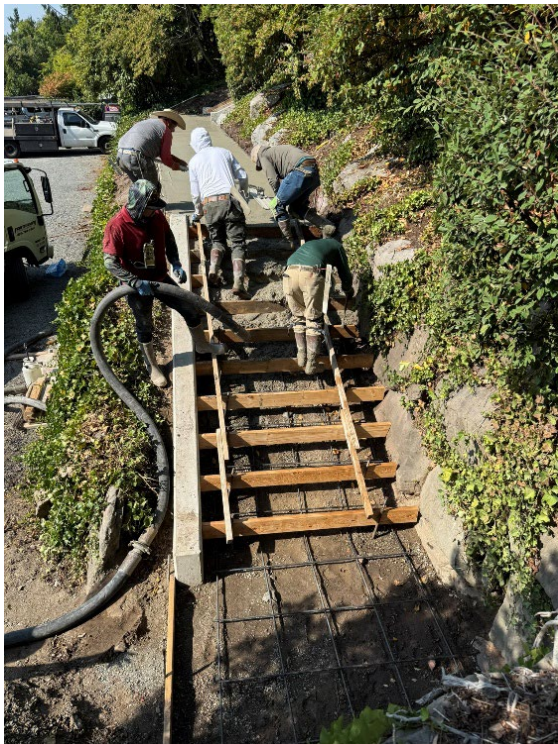
## Portfolio Snapshot

- 25+ active jobs in planning, design, and construction

# Parks Renovation & Refurbishment Plan

CIP P-R-11

PREFERRED CONCEPT PLAN



# ADA Accessibility Barrier Removal Initiative

CIP P-AD-119

2026 ADA Assessments: Wilburton Hill Park/BBG,  
Robinswood Park, Mercer Slough Environmental Ed Center,  
Crossroads Community Center & Park





Thank You!

Questions?