



Comprehensive Plan Periodic Update : Housing and Human Services

Emil A. King, Planning Director

Thara Johnson, Planning Manager

Hannah Bahnmiller, Senior Affordable Housing Planner

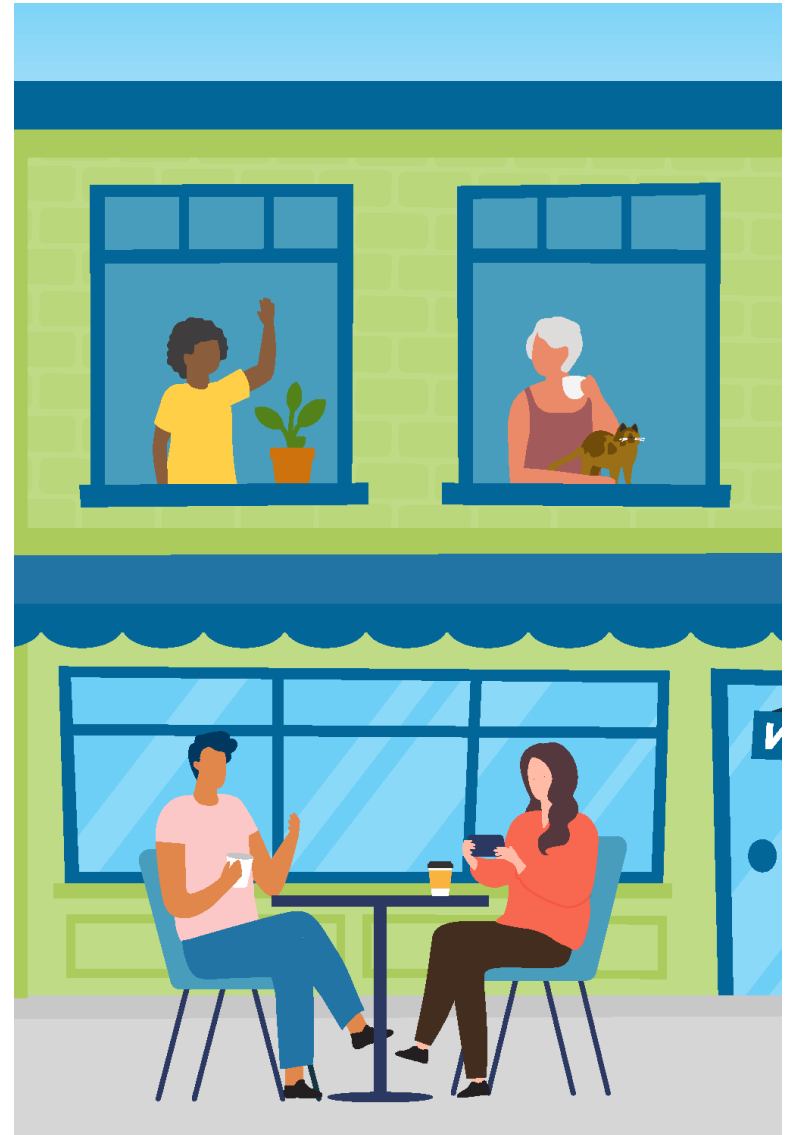
Community Development

Planning Commission | April 3, 2024



Agenda

1. Background
2. Recommended Policy Changes
3. Next Steps





Direction

Review policies in:

- Housing
- Human Services

Direction on issues to address before moving to final draft stage





Background

Date	Elements	
Jan 24	Community Engagement; Economic Development	✓
Feb 14	Land Use & Future Land Use Designations	✓
Feb 28	Future Land Use Map	✓
Mar 13	Neighborhoods; Climate & Environment; Parks (rec from PRSB)	✓
Mar 27	Utilities (rec from ESC) Urban Design & the Arts (rec from AC)	✓
April 3	Housing; Human Services (rec from HSC)	
Apr 10	Transportation; Capital Facilities	

Background

- Heard from **over 5,000 community members**
- Targeted outreach to under-represented groups
- Statistically valid survey
- Strategy Team knowledge and experience
- Taking into account: Existing and future residents & businesses





Housing



Major Changes

Additions and updates to address new housing requirements

- GMA amendments to “plan for and accommodate” housing at different income levels
- New requirements to plan for and implement middle housing
- Expansion of requirements under King County Countywide Planning Policies



Major Changes (cont.)

- Additions and updates to align with City work, such as the
 - Affordable Housing Strategy
 - 2022 Housing Needs Assessment
 - Racially Disparate Impacts Analysis
 - Climate Vulnerability Assessment



Community Feedback

Support

- Middle housing
- Housing affordability
- Inclusive communities

Missing

- Aging in place
- Neighborhood character





Housing Equity

Provides housing opportunities for all current and future residents and works to undo harms of the past.

Updated to align with CPPs and address equity and social justice

- HO-1
- HO-2
- HO-3
- HO-4
- HO-5
- HO-6
- HO-10
- HO-11

Mitigation measure from the DEIS

- HO-9



Supply and Diversity

Encourage a diverse housing stock, especially encouraging middle-scale housing typologies.

Added to align with CPPs

- HO-13
- HO-14
- HO-15
- HO-18
- HO-19
- HO-20
- HO-21
- HO-28

Updated to align with CPPs and GMA

- HO-16
- HO-17



Supply and Diversity

Encourage a diverse housing stock, especially encouraging middle-scale housing typologies.

Mitigation measure from the DEIS

- HO-12
- HO-25

Recommendation from Climate Vulnerability Assessment

- HO-24



Affordable Housing

Preserve existing affordable housing, increase affordable housing, and minimize risk and impacts of displacement.

Added to align with CPPs

- HO-31
- HO-36
- HO-37
- HO-38
- HO-42
- HO-52
- HO-53
- HO-55
- HO-57,
- HO-59
- HO-58,
- HO-61

Updated to clarify policy intent

- HO-30
- HO-32
- HO-43
- HO-45
- HO-46
- HO-56
- HO-62
- HO-63

Added to support future housing work

- HO-29
- HO-33
- HO-34
- HO-35
- HO-54



Affordable Housing

Preserve existing affordable housing, increase affordable housing, and minimize risk and impacts of displacement.

Mitigation Measure from DEIS

- HO-48
- HO-51

Added or updated for equity/RDI

- HO-47
- HO-60

Recommendation from Climate Vulnerability Assessment

- HO-41



Housing for Unique Needs

Meeting the differing needs of Bellevue residents that may require housing accommodations or assistance.

Added to align with CPPs

- HO-61

Updated to clarify policy intent

- HO-62
- HO-63

Preventing Homelessness

Preventing homelessness and ensuring appropriate, secure, and affordable housing.

Added to address the full scope of activities to prevent homelessness

- HO-66
- HO-68
- HO-69
- HO-72
- HO-73
- HO-74

Updated to support people exiting homelessness

- HO-65

Split into two policies

- HO-70
- HO-71



Human Services





Commission Recommendation

Human Services Commission unanimously recommended the amendments to the Human Service element policies.

Major Changes

- Reorganized around city roles
- Stronger link to Housing Element
- Aligned with Human Services Strategic Plan



Community Feedback

Support

- Mental and behavioral health

Missing

- Veterans





Citywide

Citywide human services system.

Policy Number	Change
HS-1	Updated to use more inclusive language and add age.
HS-2	Updated to emphasize the full role of Human Services.



Facilitator and Educator

City's role as a facilitator and educator in the human services system.

Policy Number	Change
HS-3	Updated to include equity/inequity in community dialogue.
HS-4	Updated to clarify policy intent and include more details of what is being supported
HS-5	Updated to broaden the policy to include all low- and moderate-income residents.
HS-6	Added based on a recommendation in the Climate Vulnerability Assessment (5.1.4.)



Facilitator and Educator (cont.)

City's role as a facilitator and educator in the human services system.

Policy Number	Change
HS-9	Added to address the increase in Bellevue residents who are low to moderate income and/or in crisis and the need for them to gain understanding of the resources available.
HS-10	Added to address the increase in Bellevue residents who are low to moderate income and/or in crisis and the need for the community to become informed.



Planner and Funder

City's role as a planner and funder in the human services system.

Policy Number	Change
HS-11	Updated to emphasize equity.
HS-13	Added to support continuing work of the City to assess community needs.
HS-14	Updated to include systemic issues.
HS-19	Updated to clarify policy intent.
HS-20	Added to address equitable outcomes.
HS-21	Updated to use more inclusive language.
HS-22	Updated to use more inclusive language.



Planner and Funder (cont.)

City's role as a planner and funder in the human services system.

Policy Number	Change
HS-23	Updated to use more inclusive language.
HS-24	Added to address increase in housing instability and homelessness.
HS-25	Added to address the disproportionate impacts COVID had on youth well-being, particularly those from marginalized communities.
HS-26	Added to address the increase in the number of Bellevue residents experiencing food insecurity.



Planner and Funder (cont.)

City's role as a planner and funder in the human services system.

Policy Number	Change
HS-27	Added to address the disproportionate impacts COVID and the rising cost of living are having on older adults.
HS-28	Added to address the increase in behavioral health need by recognizing behavioral health conditions
HS-29	Added to address the increase in behavioral health need by including supportive services and investments



Direction

Review policies in:

- Housing
- Human Services

Direction on issues to address before moving to final draft stage





Next Steps

Review the two elements again at the final draft stage

- Address suggested changes
- Recommend changes based on community feedback

