



# Comprehensive Plan Periodic Update

Kate Nesse & Brooke Brod

*Community Development*

April 26, 2023

**BELLEVUE**  
COMPREHENSIVE PLAN

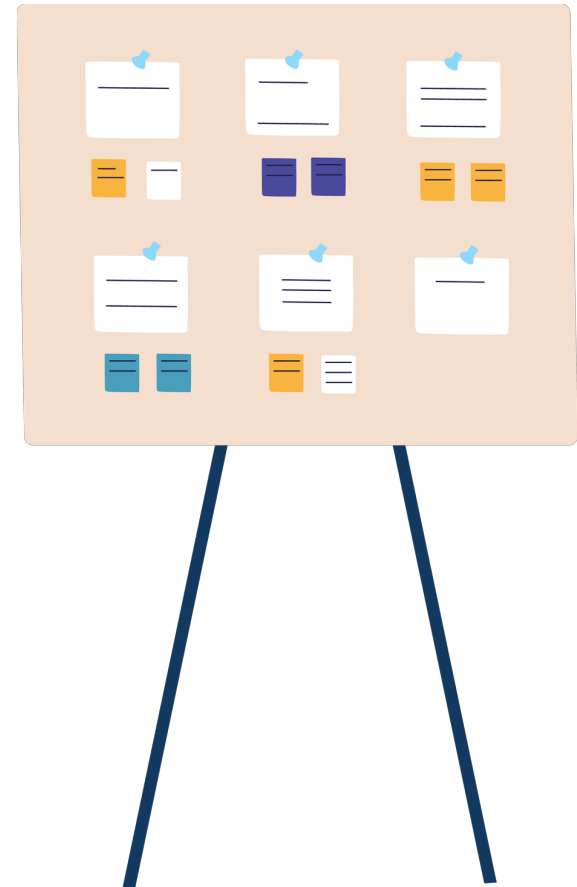
**2044**

# Information

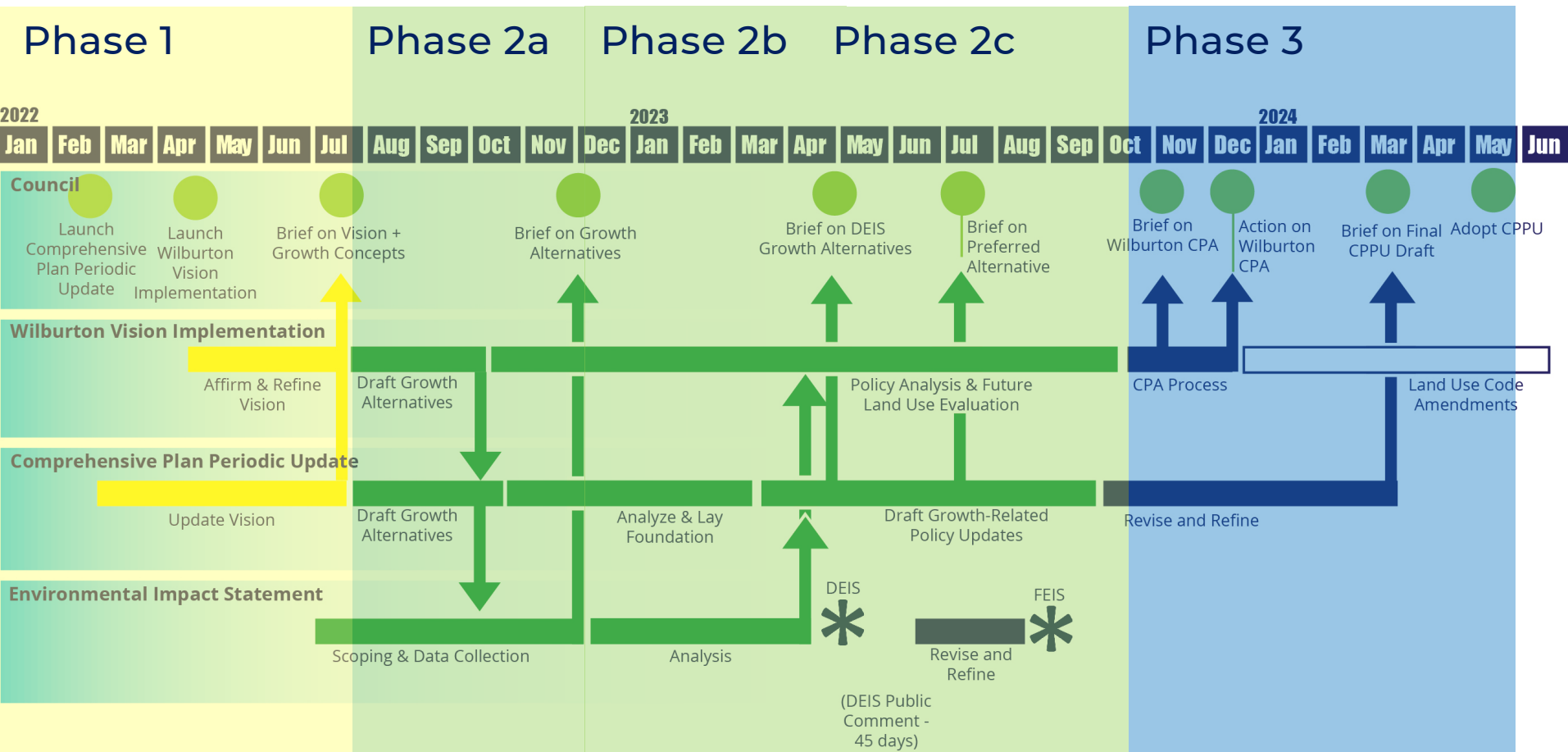
Summary of community feedback on the Comprehensive Plan Periodic Update and preview of Draft Environmental Impact Statement process



- 
1. Background
  2. DEIS Process
  3. Major Themes: Statistically Valid Survey
  4. Summary of Community Engagement
    1. Equity
    2. Housing
    3. Climate Change



# Background



# DEIS Process

Date	Activity
April 27	DEIS released
May 10	<b>Planning Commission</b> Intro to alternatives
April 27 to June 12	Public Comment Period
June 14	<b>Planning Commission</b> Begin discussion of elements of potential preferred alternative
June 28	<b>Planning Commission</b> Discuss public comment & preferred alternative; make recommendation to Council on preferred alternative

## Role of Planning Commission:

- Review environmental analysis and make a recommendation on the preferred alternative for the FEIS



## DEIS Process

Information to inform preferred alternative & growth strategy:

- Environmental Impact Statement
- Economic Analysis
- Racially Disparate Impact Assessment
- Community Feedback

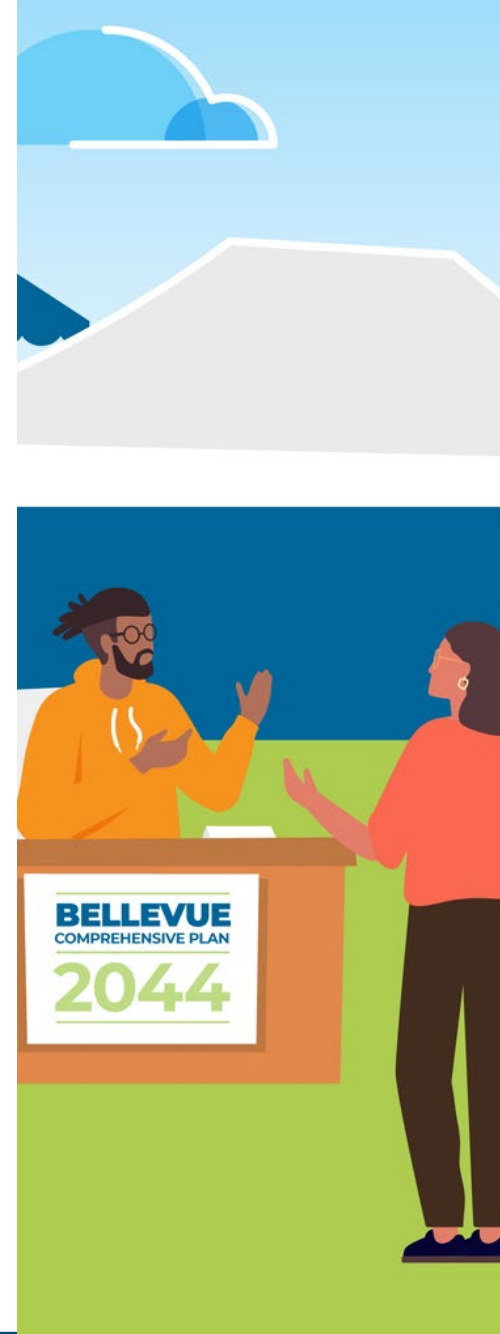
# Community Engagement

- Approved by Council February 28, 2022
- Following plan
  - More engagement with under-represented groups than anticipated
  - Making adjustments as needed



# Community Engagement

- Communicated with about 5,000 community members
- Targeted outreach to under-represented groups
- Statistically valid survey of residents
- Strategy Team knowledge and experience
- Taking into account: Existing and future residents & businesses





# Engagement Spotlight: Statistically Valid Survey

- Survey of Bellevue residents
- 1,152 respondents
- Included follow up activities (such as phone calls) to reduce nonresponse bias
- Weighted to reflect Bellevue's population
  - Age
  - Dwelling type
  - Ownership
  - Income



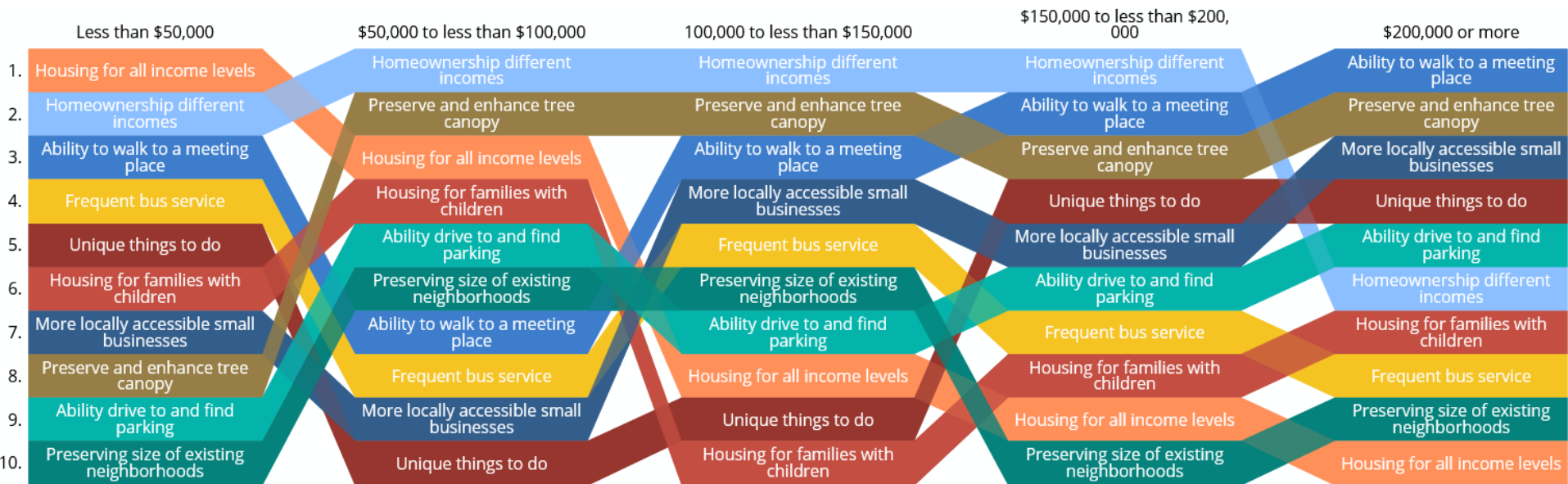
# Statistically Valid Survey: Development Priorities

1	Homeownership Opportunities for Different Incomes
2	Preserve and Enhance the Tree Canopy
3	Ability to Walk to a Meeting Place
4	More Locally Accessible Businesses
5	Unique Things to Do
6	Ability to Drive Places and Easily Find Parking
7	Preserving the Size & Scale of Existing Suburban Neighborhoods
8	Housing for All Income Levels
9	Frequent Bus Service
10	Housing for Families with Children

- Top three priorities:
  1. Homeownership
  2. Tree Canopy
  3. Walkability

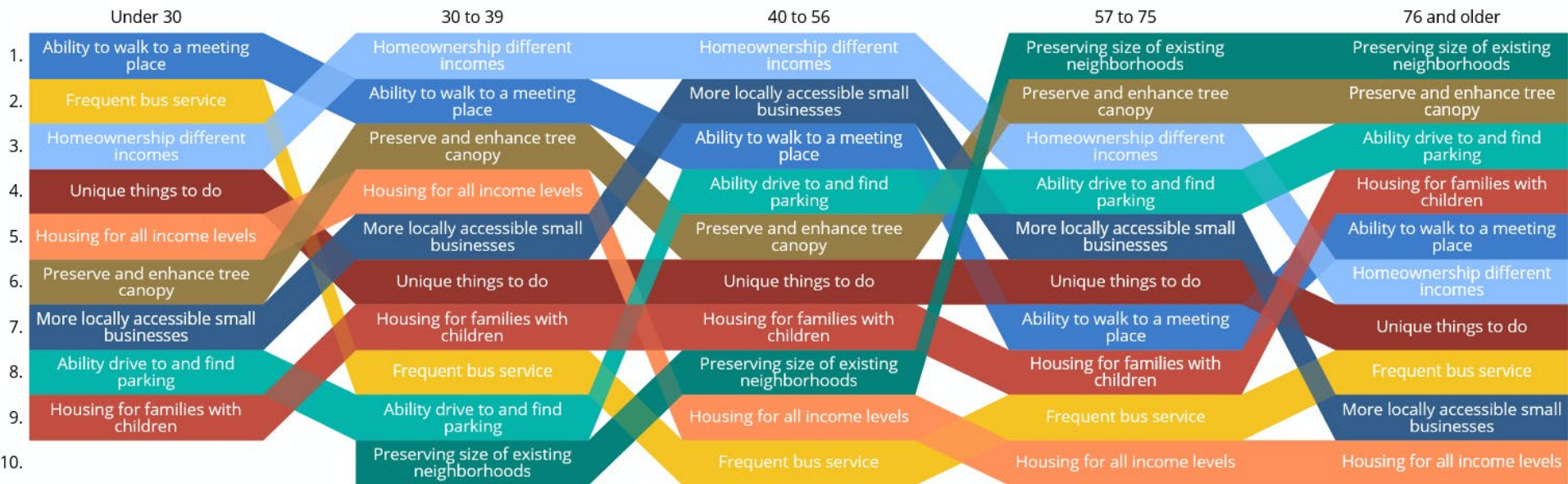
# Statistically Valid Survey: Development Priorities

- Affordable homeownership a priority across most household income levels



# Statistically Valid Survey: Development Priorities

- Preserving the size and scale of existing neighborhoods is most important to older residents



# Statistically Valid Survey: Attitudes Towards Growth

“Please indicate your level of support for increased housing, including townhomes, apartments and condominiums.”

## Support for New Housing Development Throughout Bellevue



















## Support for New Housing Development In Neighborhood



# Statistically Valid Survey: Popularity of Neighborhood Types

- Bellevue needs a variety of housing styles & neighborhoods to meet residents' needs

<b>Single-Family Residential</b>  One house per lot	<b>Low Scale Residential</b>  Mix of one house per lot, duplexes, and townhomes	<b>Mixed Use</b>  A mix of small condos and apartment buildings, townhomes, single-family homes, and duplexes	<b>Urban Core</b>  Mostly apartment and condo buildings, 5-stories or taller
 Only residential zoning, must drive to all businesses	 Some small businesses within walking distance	 Some small businesses within walking distance	 Denser development with small and large businesses within walking distance
 Medium sized parks 15-20 minute walk away with some parking and amenities	 Medium sized parks 15-20 minute walk away with some parking and amenities	 Medium sized parks 15-20 minute walk away with some parking and amenities	 Medium sized parks 15-20 minute walk away with some parking and amenities
 Pedestrian and bike oriented street design that prioritizes safety and slower speeds	 Pedestrian and bike oriented street design that prioritizes safety and slower speeds	 Pedestrian and bike oriented street design that prioritizes safety and slower speeds	 Pedestrian and bike oriented street design that prioritizes safety and slower speeds
Some options for affordable housing	Some options for affordable housing	Some options for affordable housing	Some options for affordable housing
26% prefer this neighborhood	38% prefer this neighborhood	29% prefer this neighborhood	7% prefer this neighborhood

# Community Engagement

Some of the major areas requiring updates in the Comprehensive Plan

- Equity
- Housing
- Climate Change



# What does Equity Mean?

Equity means that a person's identity (white, female, disabled, etc.) does not predict personal and social outcomes like income or health.





# Equity

Access to housing is out of reach for many people

“Over six years ago I began search for smaller home to downsize to after my spouse's death. I have now adjusted my home search for housing outside Bellevue and am looking at senior housing - cottage like or larger condo/apartments with a garage (I hope) but am angry that I must leave Bellevue to find it.”

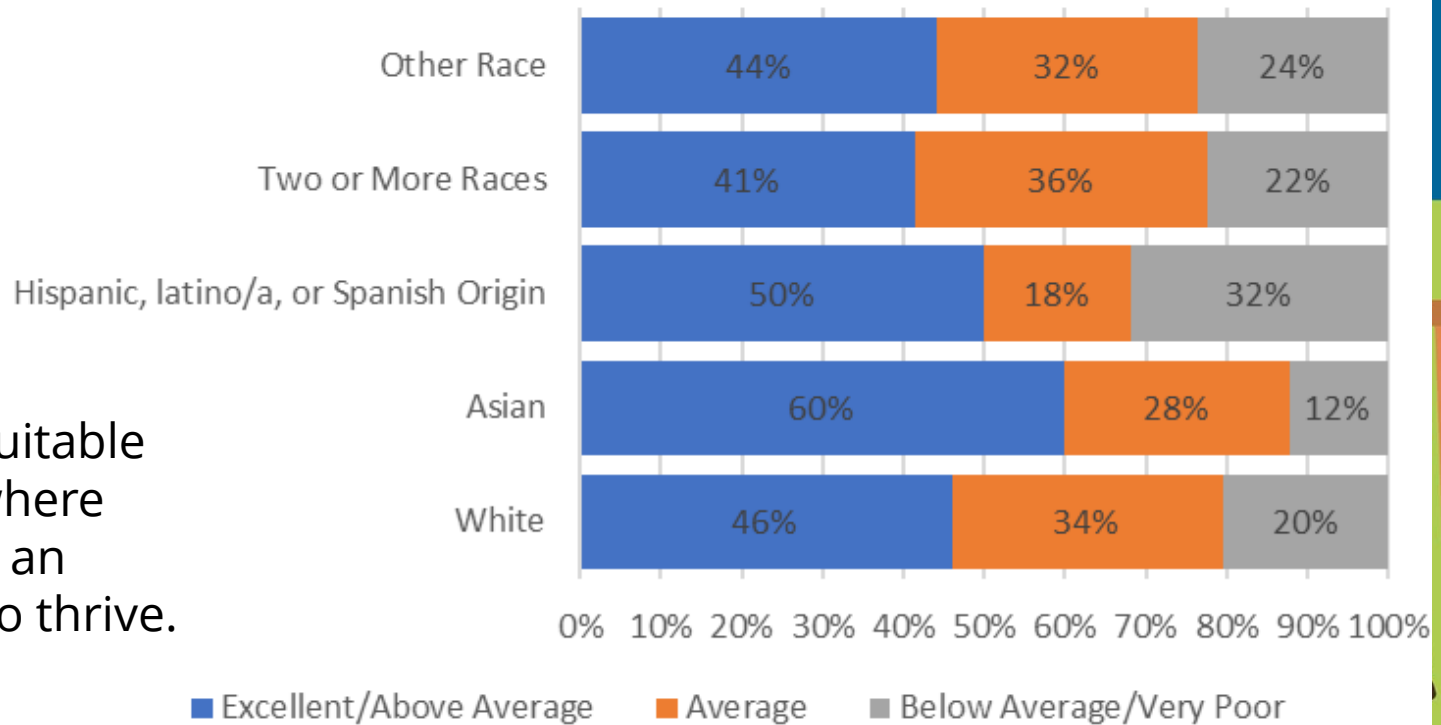


Source: City of Bellevue. 2022. Housing Stories.

# Equity

## Spanish not a focus of cultural outreach and services

We are an equitable community where everyone has an opportunity to thrive.



Source: City of Bellevue. 2022. Vision Survey.

# Equity

The poorest residents are often overlooked in the city

“There’s a lot of money in Bellevue. If you don’t have resources you don’t belong. How do we fit in?”

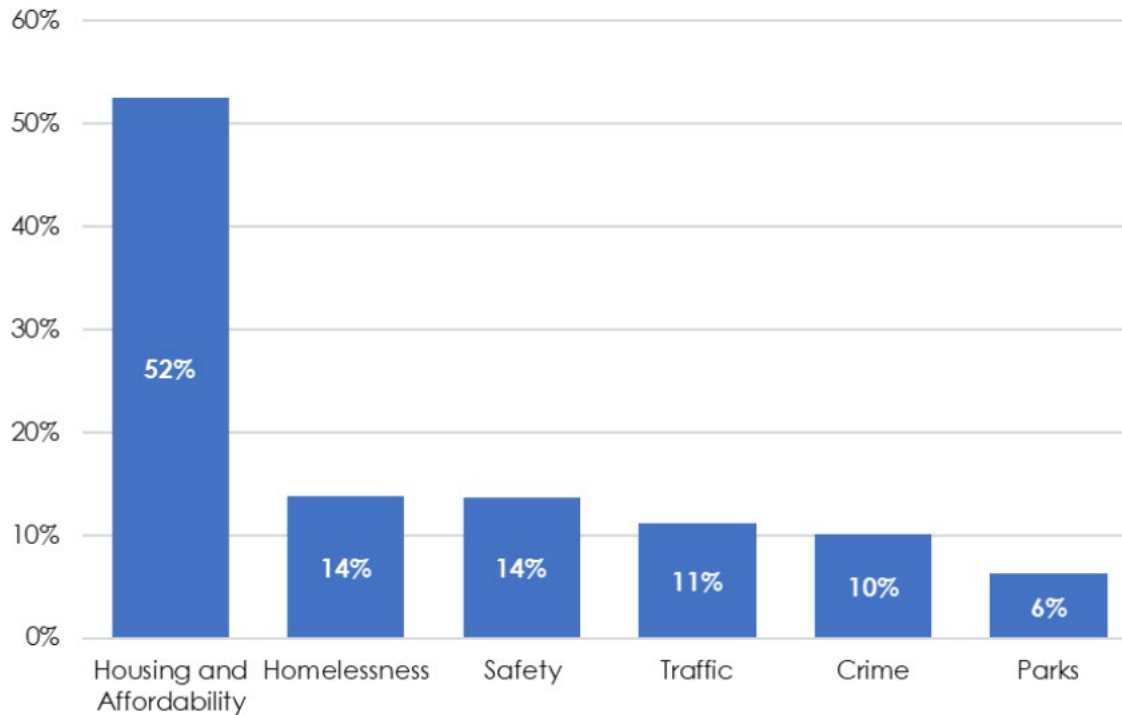


Source: City of Bellevue. 2022. Mary’s Place Focus Group.

# Housing

Bellevue needs many different neighborhoods to meet needs

Share of Responses



Source: City of Bellevue, 2022. Vision Survey.

# Housing

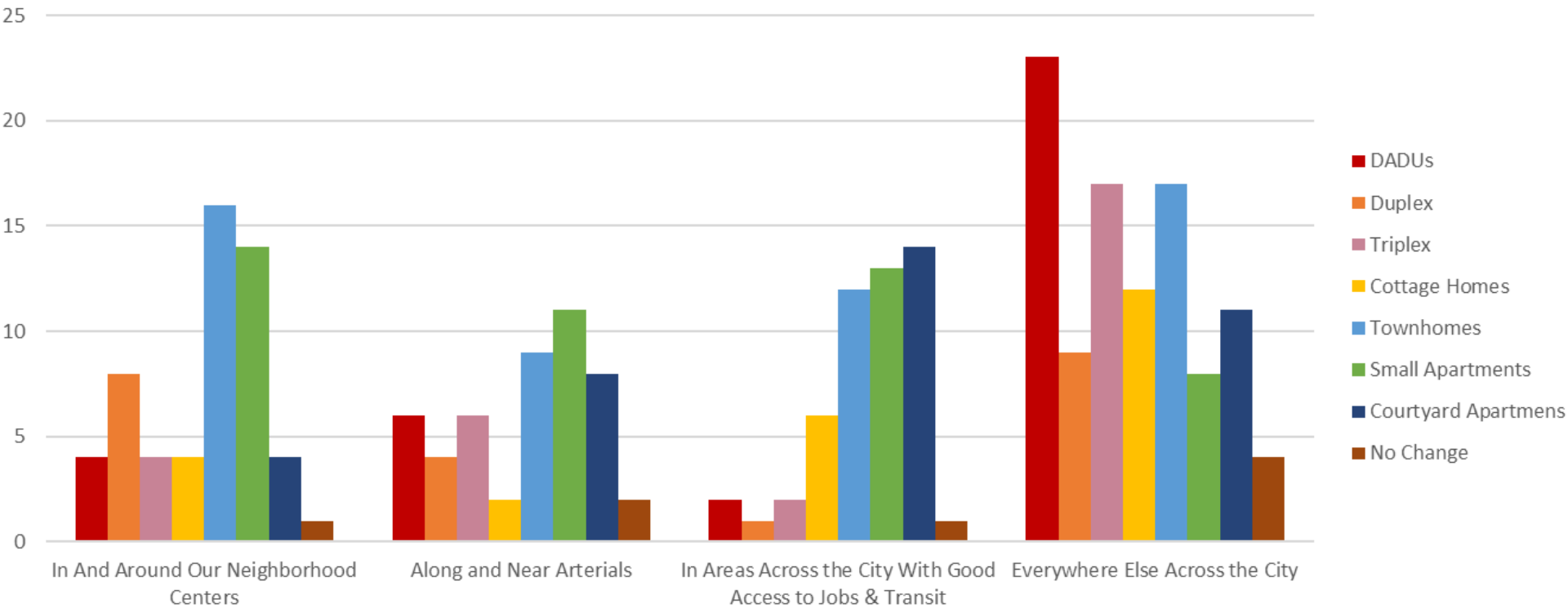
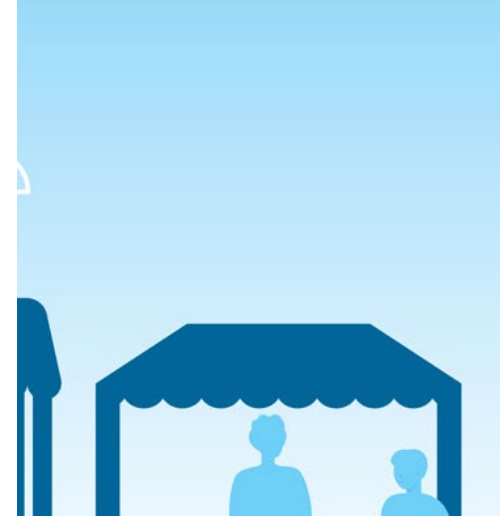
Supporting homeownership for first time home buyers and others with less means is important



Source: City of Bellevue. 2022. Statistically valid survey.

# Housing

Some places in Bellevue are more suited for middle housing



Source: City of Bellevue. 2022. Deep Dive – Housing: Diversity & Choice.



# Climate Change

Preserving the tree canopy is important for aesthetic and health reasons

“We want more communication between developer, city and the community when it comes to development. Expanding greenspace is difficult. We want more connection between parks and development.”



Source: City of Bellevue. 2023. Housing Forum.

# Climate Change

Reducing greenhouse gas emissions should be a focus of city policy

“...A significant percentage of the build cost [should be put] into sustainable products such as solar panels, solar windows, recycled water systems, etc. that assist the city and our environment in maintaining the quality of area. ...most people want to live in these more efficient residences, it is part of the reason we live here.”



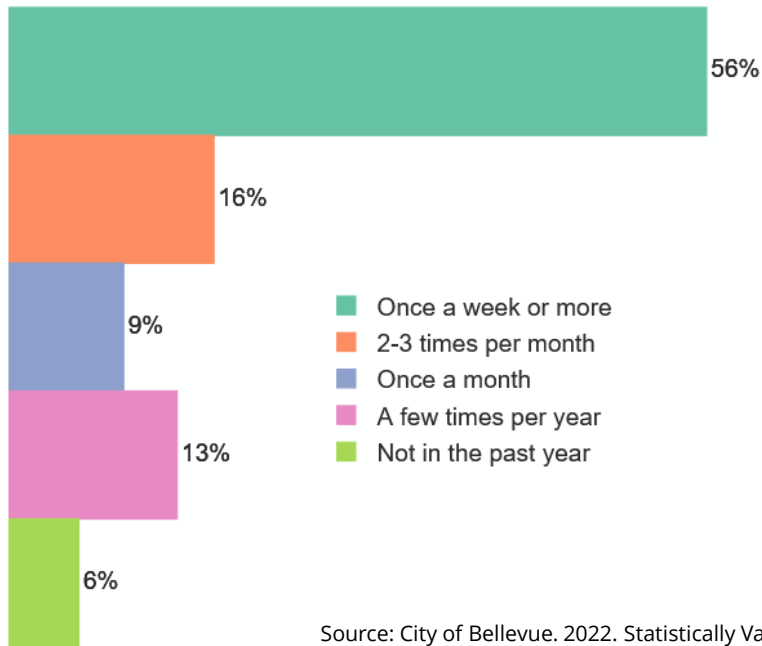
Source: City of Bellevue. 2022. Deep Dive – Environment: Green Space & Sustainability.



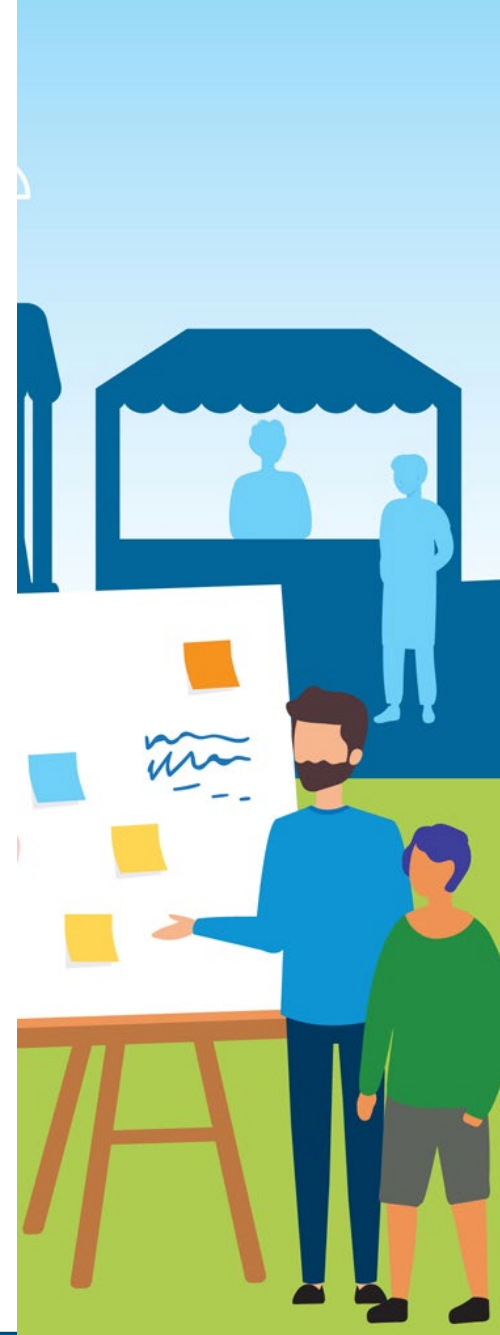
# Climate Change

## Supporting safety for walking, biking and using transit is needed

"In the past 12 months, how often have you walked, biked, or accessed a park or trail?"



Source: City of Bellevue. 2022. Statistically Valid Survey.



# Information

---

Summary of community feedback on the Comprehensive Plan Periodic Update and preview of Draft Environmental Impact Statement process

