

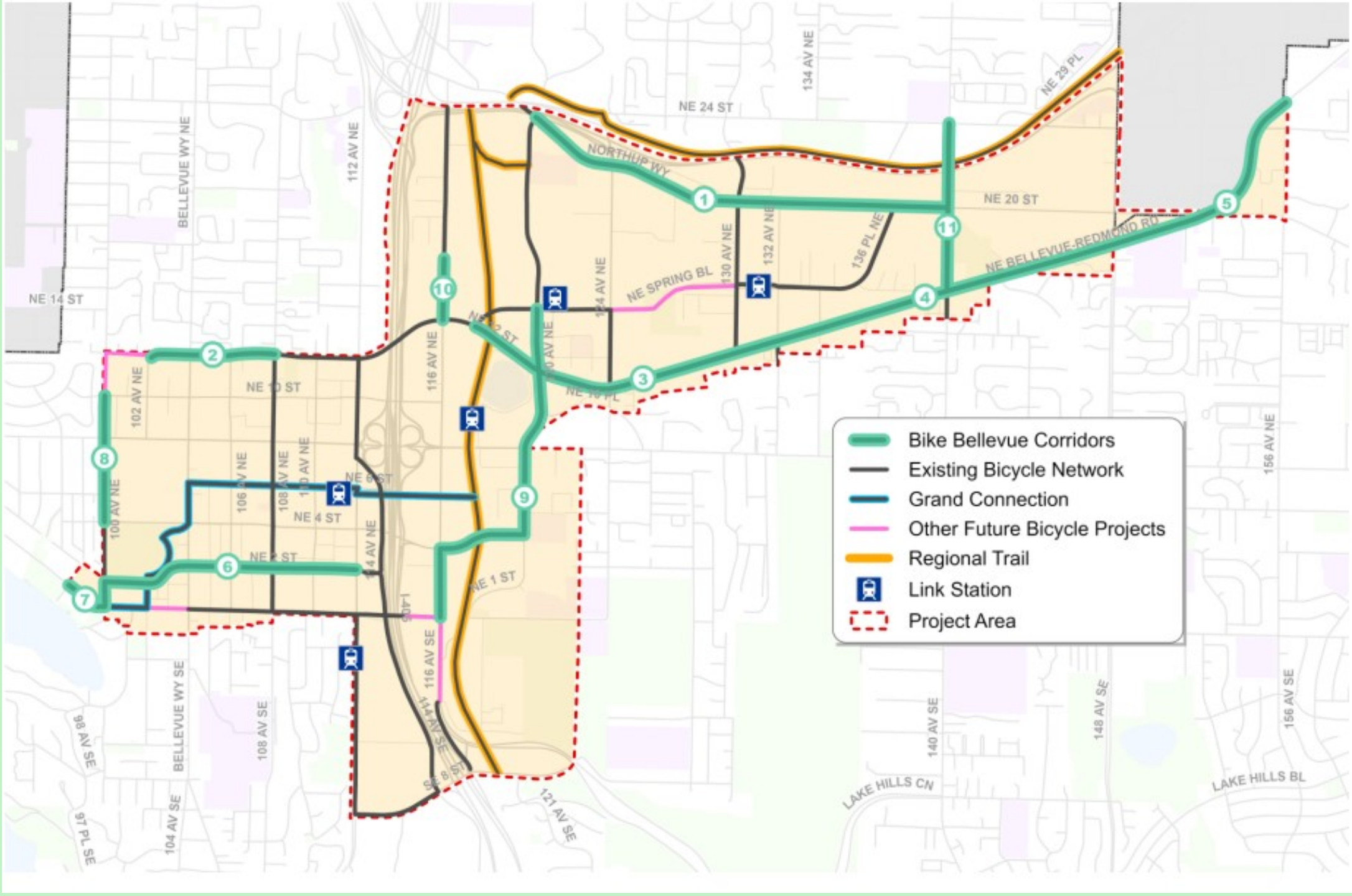
BIKE BELLEVUE

Transportation Commission

June 13, 2024

Outline

- Bike Bellevue Corridors Map
- Commission Recommendation on April 11
- Commission Recommendation on May 23
- NE 12th Street Corridor 2 Tour
- Staff Recommendation: NE 12th Street Corridor 2
- Commission Recommendation: NE 12th Street Corridor 2
- Next Steps

[illegible]

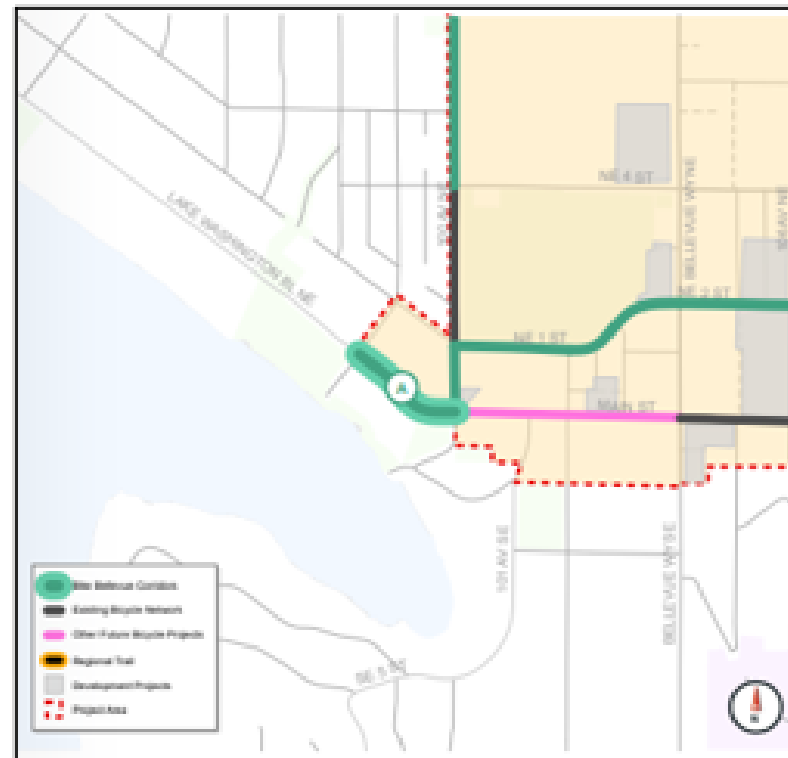
Transportation Commission Recommendation

April 11, 2024

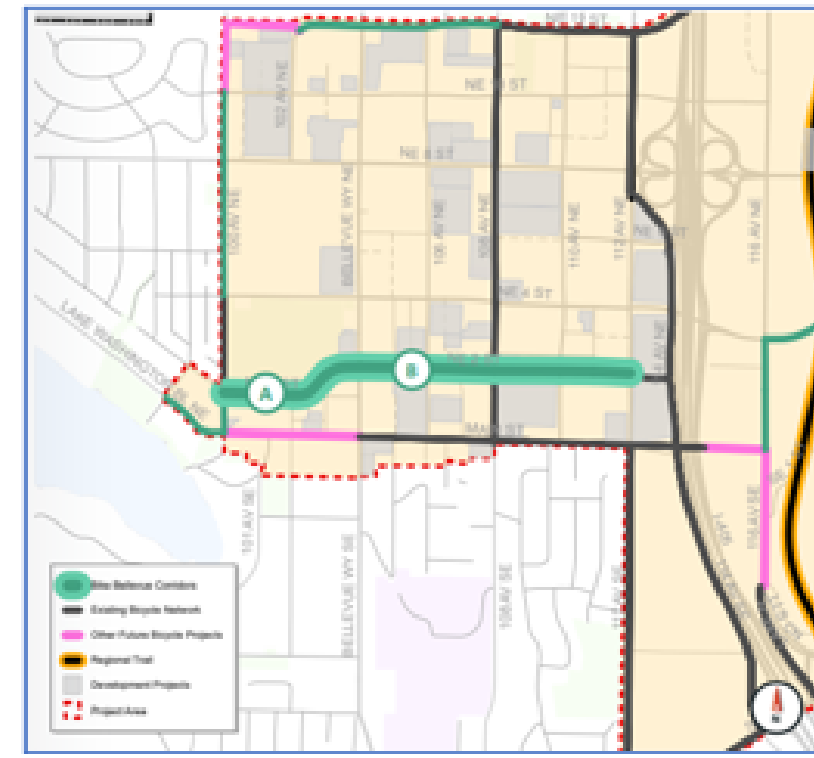
Implement bike lanes w/o repurposing vehicle travel lanes; new and enhanced existing bicycle network facilities



Wilburton Route



Lake Washington Boulevard



NE 2nd Street Bvue Way - 112th Ave

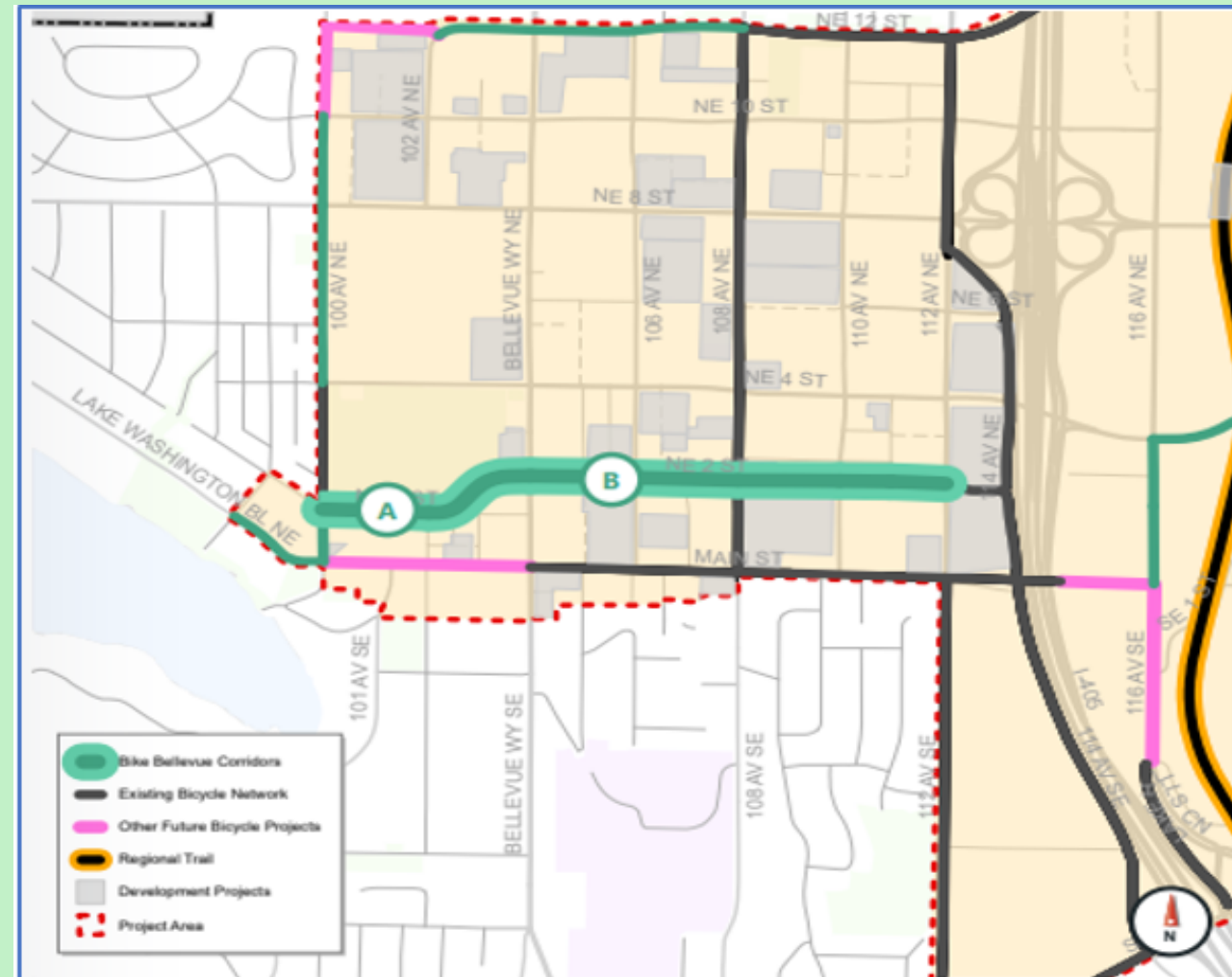
Transportation Commission Recommendation

May 23, 2024

Sharrows with speed limit of 20 mph and other traffic calming measures, and evaluation of performance.

Memo Correction:

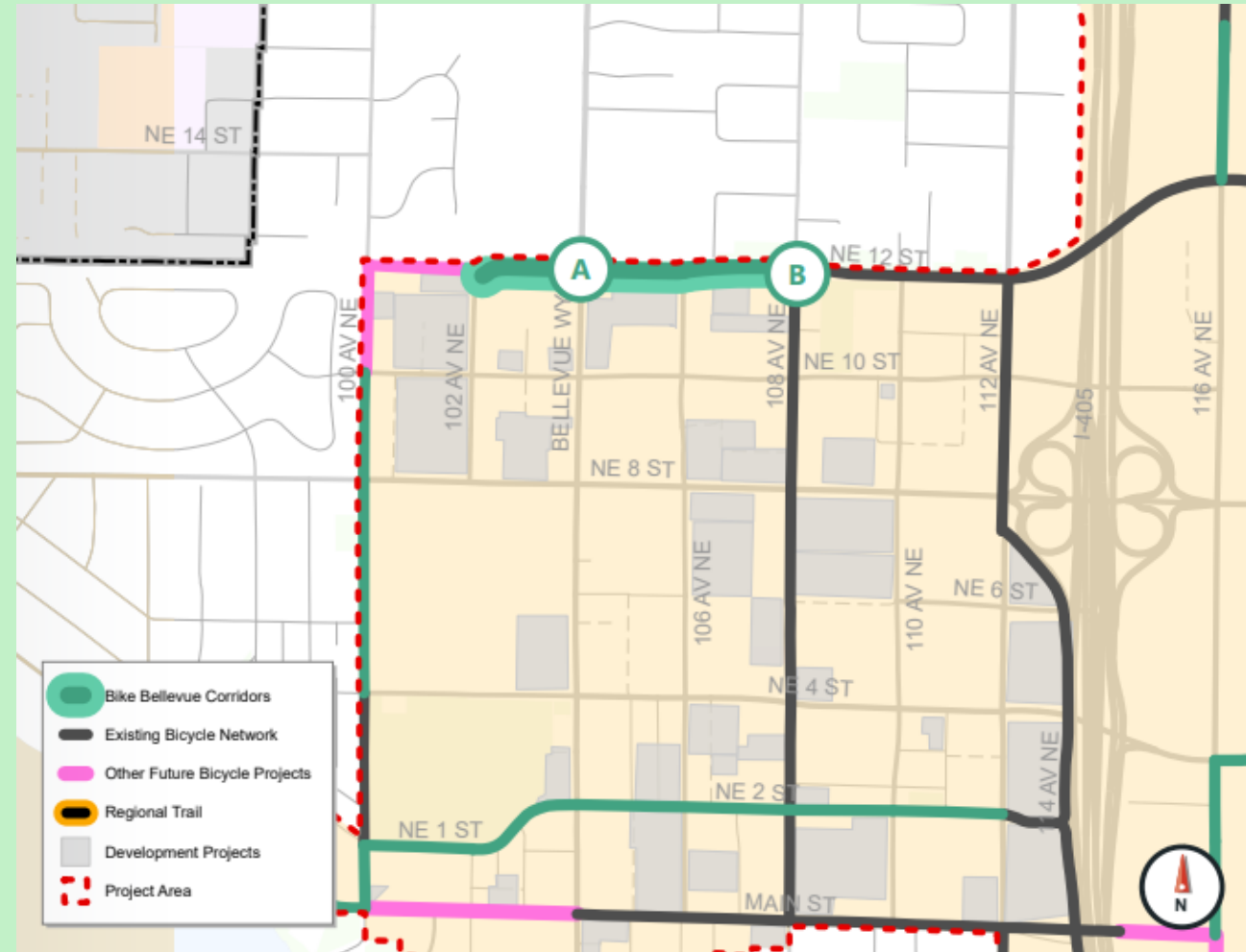
On May 23, the Transportation Commission recommended Bike Bellevue Corridor 6A (~~NE 12th~~ NE 1st / NE 2nd Street: 100th Avenue NE - Bellevue Way) for design and implementation as a shared street with traffic calming provisions, speed limit reduction to 20 mph and wayfinding.



NE 2nd Street Corridor 6: 100th Avenue NE - 112th Avenue NE

Corridor 2: NE 12th Street

- Bike Bellevue draft design guide converts one of two eastbound travel lanes between 102nd Avenue NE and 108th Avenue NE to two-way cycle-track (Segment A)
- Intersection improvements to connect to 108th Avenue NE (B)
- Provides continuity to existing multipurpose path east of 108th Avenue NE all the way to the Spring District



Corridor 2: NE 12th Street

Corridor 2: NE 12th Street Tour



View east from 100th Avenue NE along the NE 12th Street corridor

Corridor 2: NE 12th Street Tour



View south on 100th Avenue NE at NE 12th Street



View north on 100th Avenue NE at NE 12th Street

Corridor 2: NE 12th Street Tour



View west on NE 12th Street corridor extension



View west on NE 12th Street corridor extension

Corridor 2: NE 12th Street Tour



View west on NE 12th Street at 102nd Avenue NE



View west on NE 12th Street at 102nd Avenue NE

Corridor 2: NE 12th Street Tour



View east on NE 12th Street at Bellevue Way

Corridor 2: NE 12th Street Tour



View east on NE 12th Street east of Bellevue Way



View east on NE 12th Street at NE 12th Place

Corridor 2: NE 12th Street Tour



View east on NE 12 Street west of 106TH Avenue NE



View east on NE 12 Street west of 108th Avenue NE

Corridor 2: NE 12th Street Tour



View east on NE 12 Street at 108th Avenue NE
West terminus/beginning of multipurpose path



View south on 108th Avenue NE at NE 12 Street

Corridor 2: NE 12th Street Tour



View east on NE 12 Street east of 108th Avenue NE
Existing multipurpose path between 108th Ave NE
and 112th Ave NE



View east on NE 12 Street at 112th Avenue NE
East terminus/beginning of multipurpose path

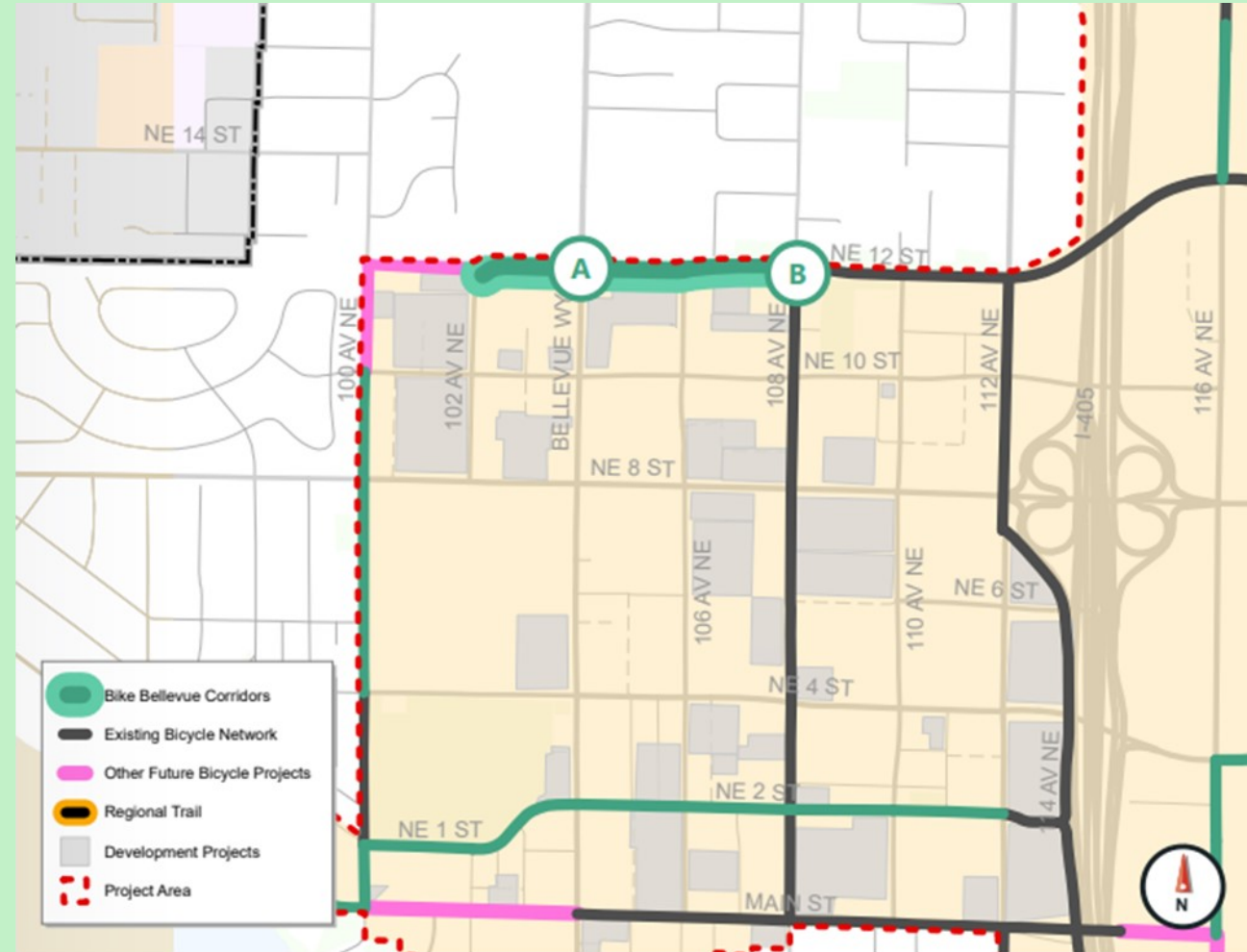
Staff Recommendation

Corridor 2: NE 12th Street

Implement Corridor 2: NE 12th Street as a permanent multipurpose path between 108th Avenue NE and 102nd Avenue NE (With a planned segment between 100th Ave NE and 102nd Ave NE).

Rationale

- Does not repurpose a travel lane
- Permanent multipurpose path will achieve LTS 1 Performance Target
- Extends existing multipurpose path east of 108th Avenue NE
- Connects to planned multipurpose path between 100th Avenue NE and 102nd Avenue NE. Coordinate with private developer.

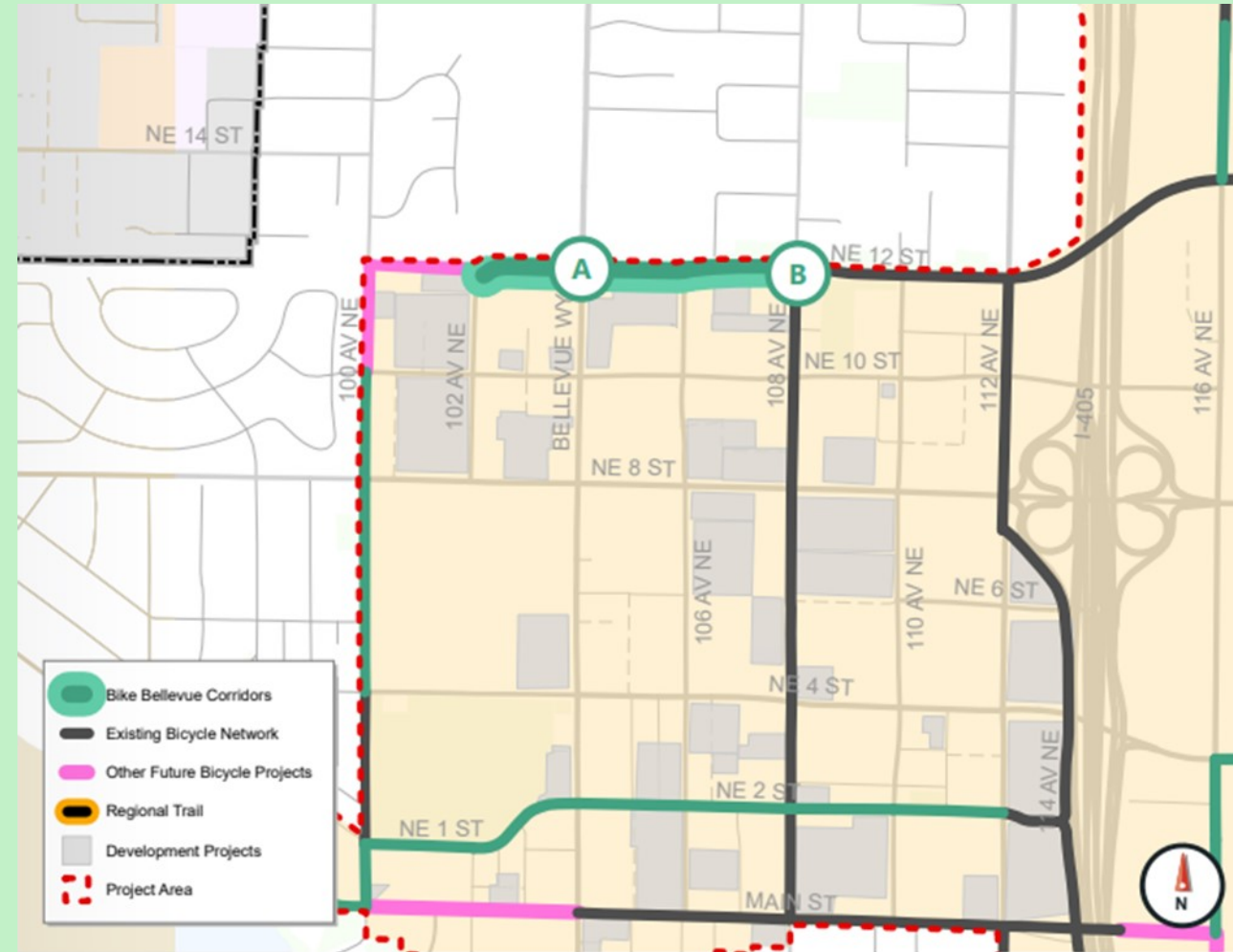


Corridor 2: NE 12th Street

Commission Recommendation

Corridor 2: NE 12th Street

- Discussion
- Questions
- Recommendation to the Transportation director



Corridor 2: NE 12th Street

Next Steps

Staff will recommend categories for the remaining Bike Bellevue corridors for consideration and recommendation at the July 11 and September 12 Commission meetings.

- Corridor 1: Northup Way
- Corridors 3, 4, 5: BelRed Road
- Corridor 8: 100th Avenue NE
- Corridor 10: 116th Avenue NE
- Corridor 11: 140th Avenue NE

Thank You

Kevin McDonald, AICP

kmcdonald@bellevuewa.gov

425-452-4558

Bike Bellevue Corridor Categories

- 1) *Corridors that would not require travel lane repurposing that the City would program and implement as soon as possible.*
- 2) *Corridors that have an emphasis on creating connected routes for Bike Bellevue.*
- 3) *If a travel lane is repurposed, it will be first evaluated as a trial or demonstration project that will be evaluated using data that will be provided by the Transportation Commission, and recommend to repurpose a travel lane only as a last resort.*
- 4) *Prioritize high injury network area corridors.*
- 5) *Corridors that would be deferred to and incorporated into the next update of the Transportation Facilities Plan (2024/25) for citywide consideration, prioritization, and resource allocation.*
- 6) *Corridors that would no longer be considered and provide a rationale as to why.*
- 7) *Corridors that would be implemented as permanent bicycle infrastructure rather than with a rapid-implementation design*