

BIKE BELLEVUE TRANSITION

Transportation Commission

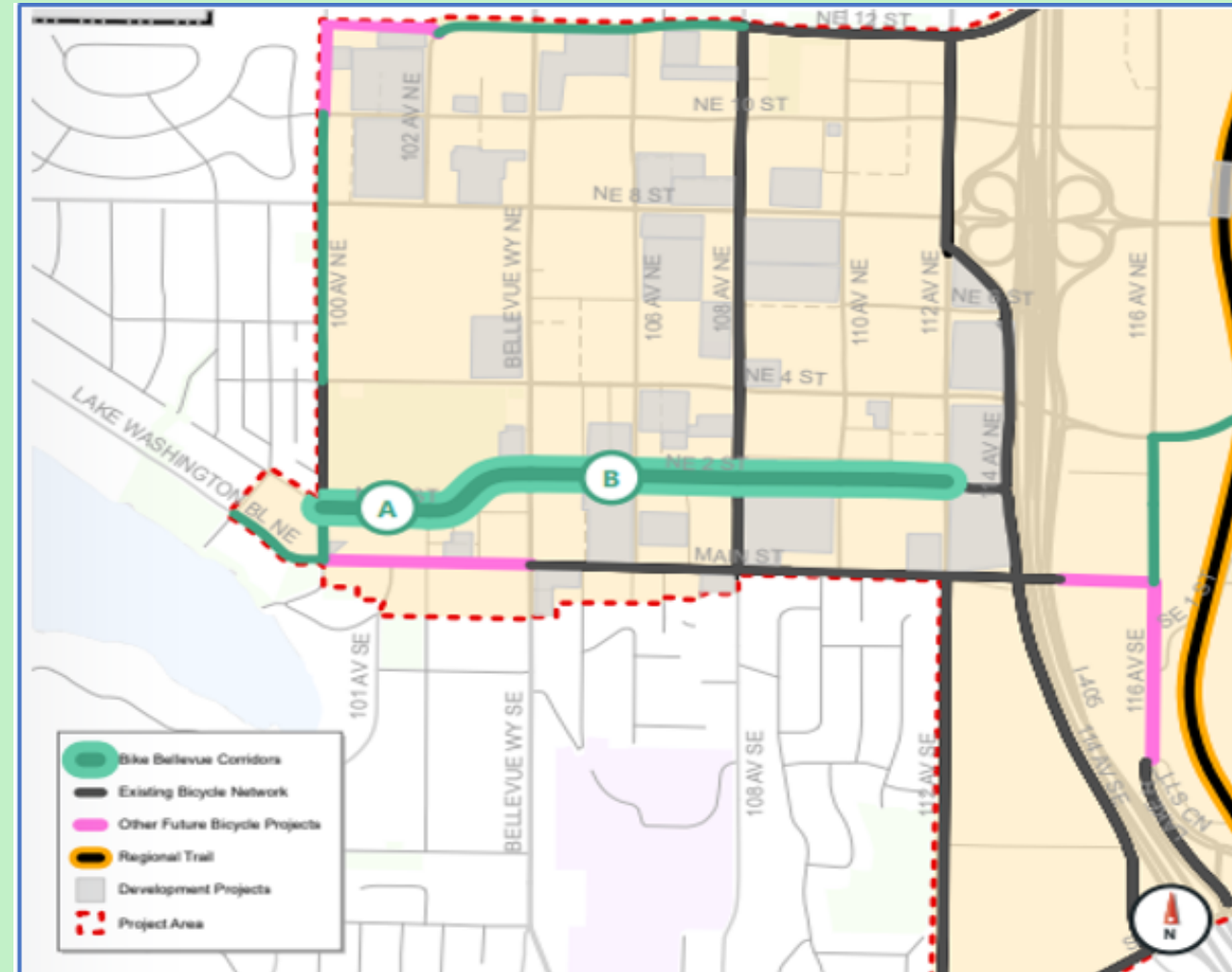
May 23, 2024

Outline

- Bike Bellevue Corridors Map
- Council Direction: Bike Bellevue Corridor Categories
- Commission Recommendation on April 11
- NE 2nd Street Corridor 6A Tour
- Staff Recommendation: NE 2nd Street Corridor 6A
- Commission Recommendation: NE 2nd Street Corridor 6A
- Next Steps

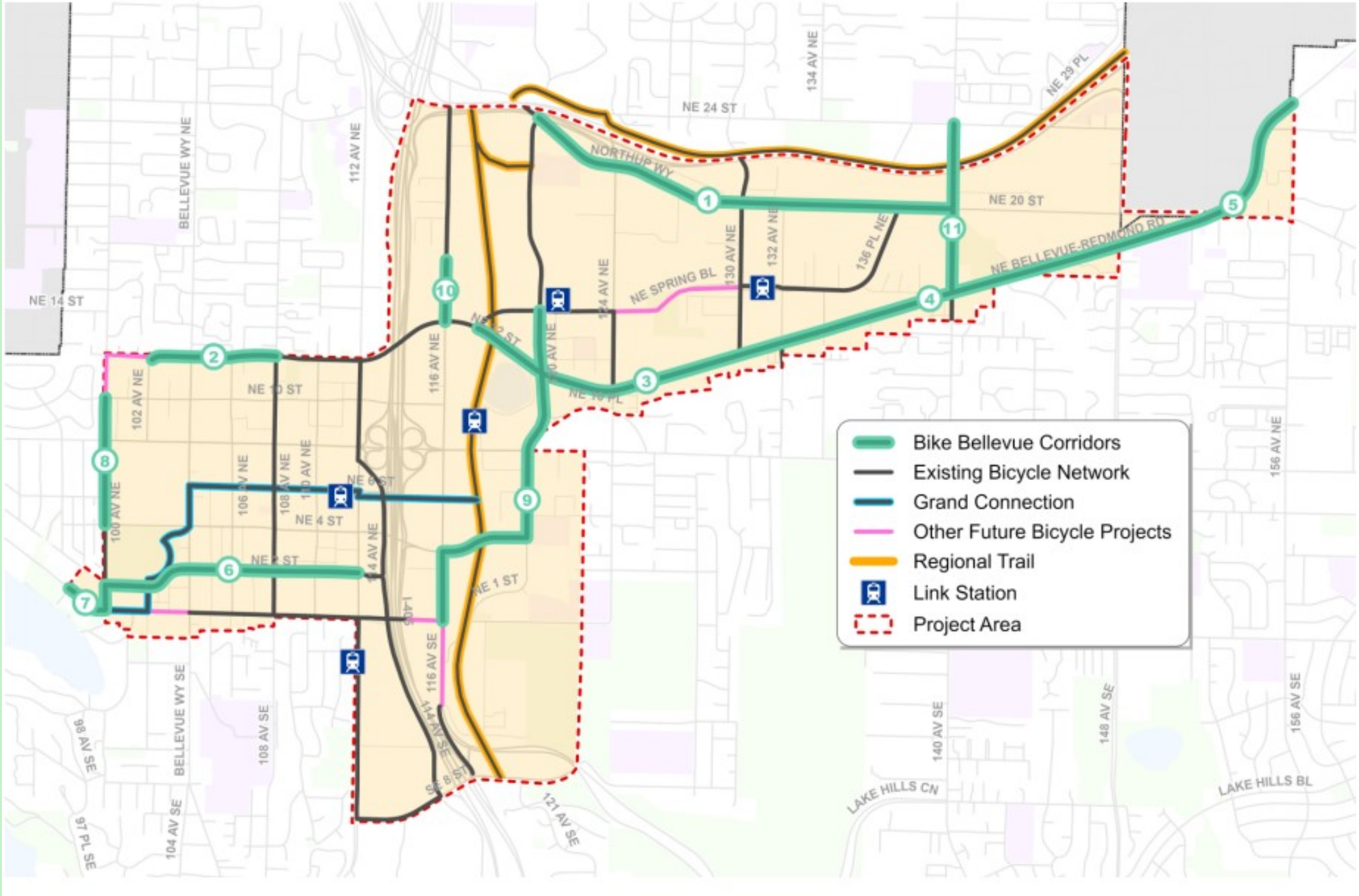
Transportation Commission Recommendation

Corridor 6A NE 2nd Street
Recommendation to the
director of Transportation



NE 2nd Street Corridor 6: 100th Avenue NE - 112th Avenue NE

Bike Bellevue Corridors



Bike Bellevue Corridor Categories

- 1) *Corridors that would not require travel lane repurposing that the City would program and implement as soon as possible.*
- 2) *Corridors that have an emphasis on creating connected routes for Bike Bellevue.*
- 3) *If a travel lane is repurposed, it will be first evaluated as a trial or demonstration project that will be evaluated using data that will be provided by the Transportation Commission, and recommend to repurpose a travel lane only as a last resort.*
- 4) *Prioritize high injury network area corridors.*
- 5) *Corridors that would be deferred to and incorporated into the next update of the Transportation Facilities Plan (2024/25) for citywide consideration, prioritization, and resource allocation.*
- 6) *Corridors that would no longer be considered and provide a rationale as to why.*
- 7) *Corridors that would be implemented as permanent bicycle infrastructure rather than with a rapid-implementation design*

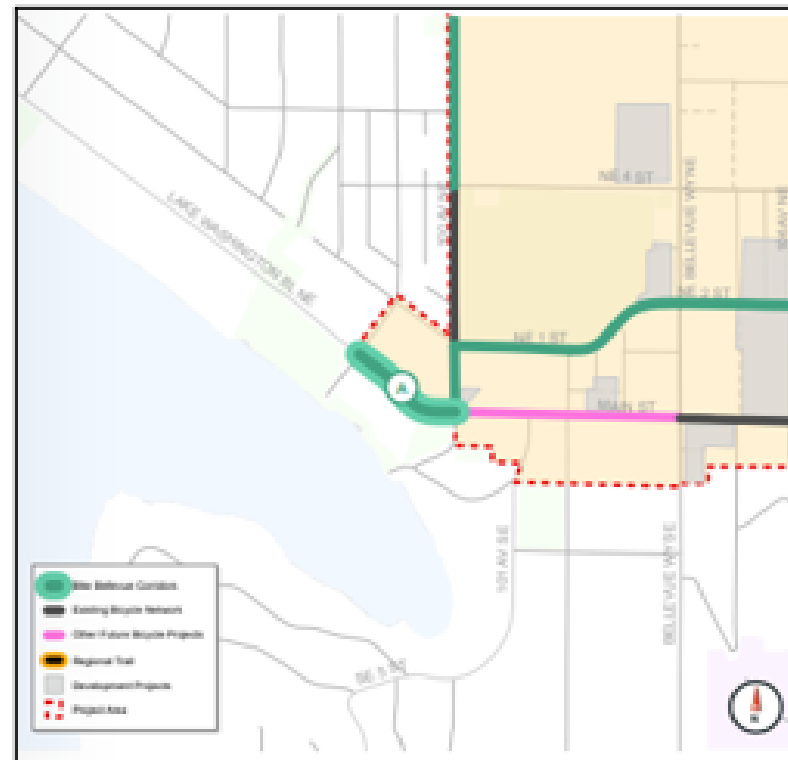
Corridor Categorization

Commission Recommendation, April 11, 2024

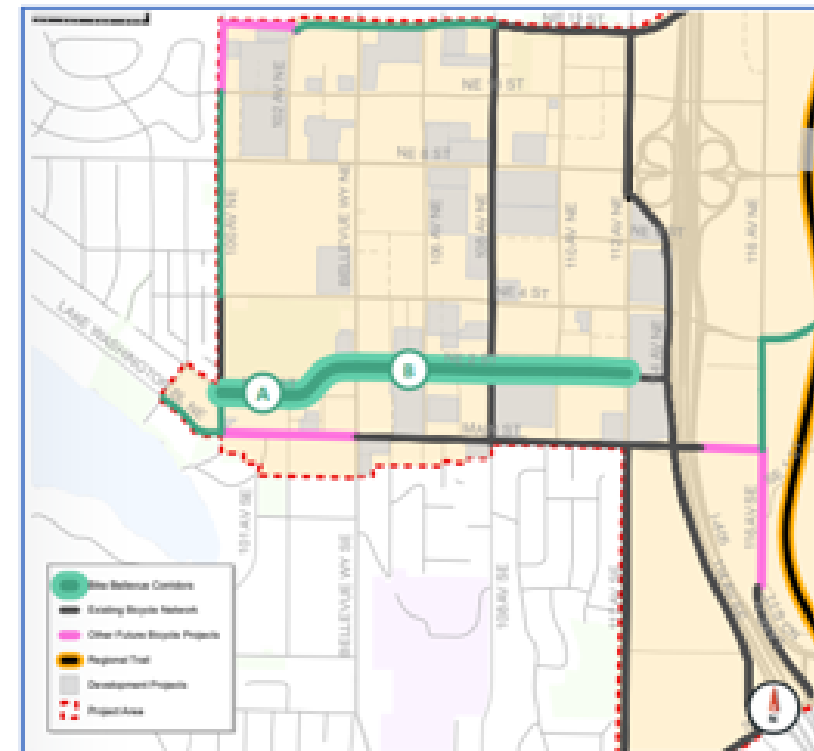
Category 1. Corridors that would not require travel lane repurposing that the City would program and implement as soon as possible.



Wilburton Route



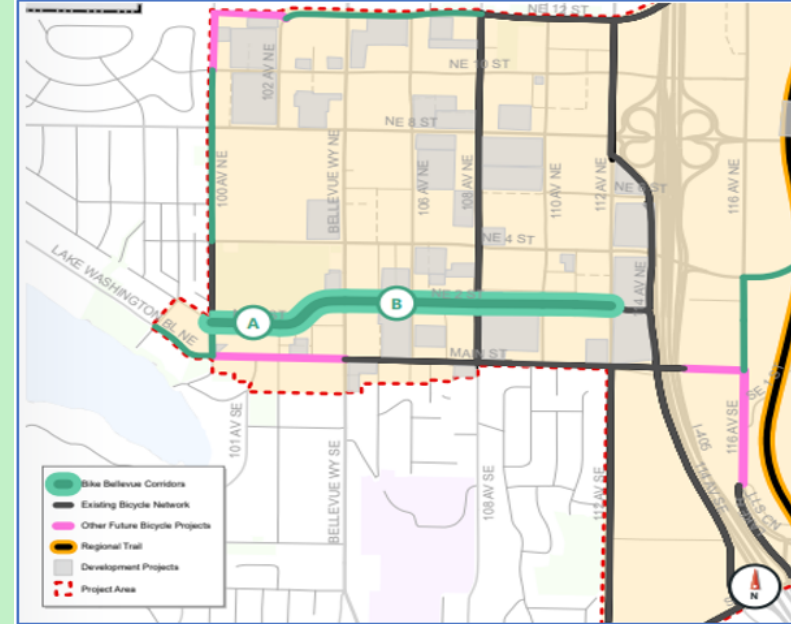
Lake Washington Boulevard



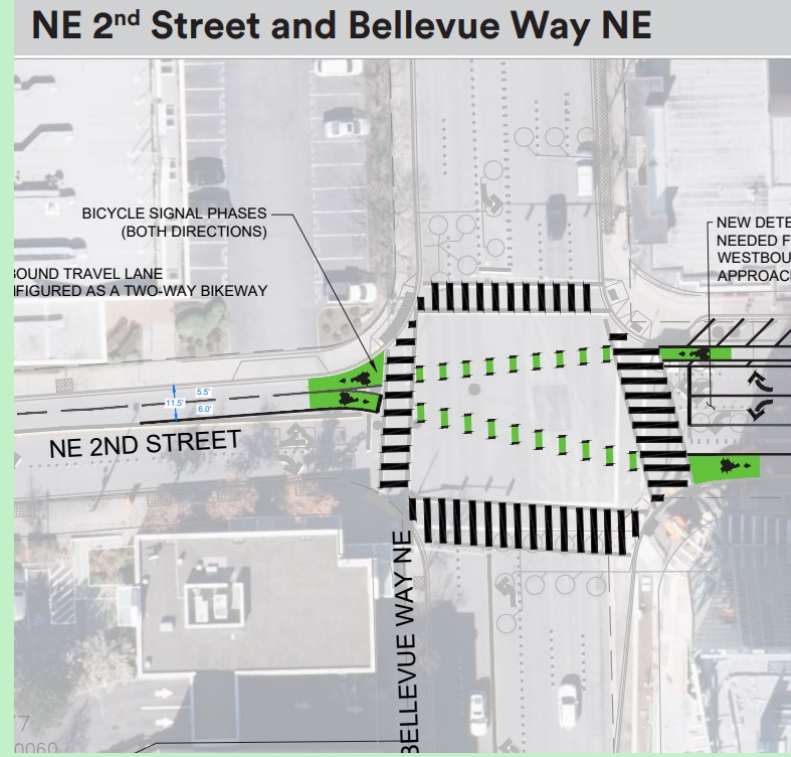
NE 2nd Street Bvue Way - 112th Ave

Corridor 6A NE 2nd Street

- Corridor 6A connects 100th Avenue NE and Bellevue Way along NE 1st/2nd Street
- Provides continuity for approved Corridor 6B NE 2nd Street between 100th Ave NE and 112th Ave NE
- Bike Bellevue draft design guide converts westbound travel lane west of Bellevue Way to two-way cycle-track



NE 2nd Street Corridor 6: 100th Avenue NE - 112th Avenue NE



Corridor 6A NE 2nd Street Tour



Corridor 6A NE 2nd Street Tour



Corridor 6A NE 2nd Street Tour

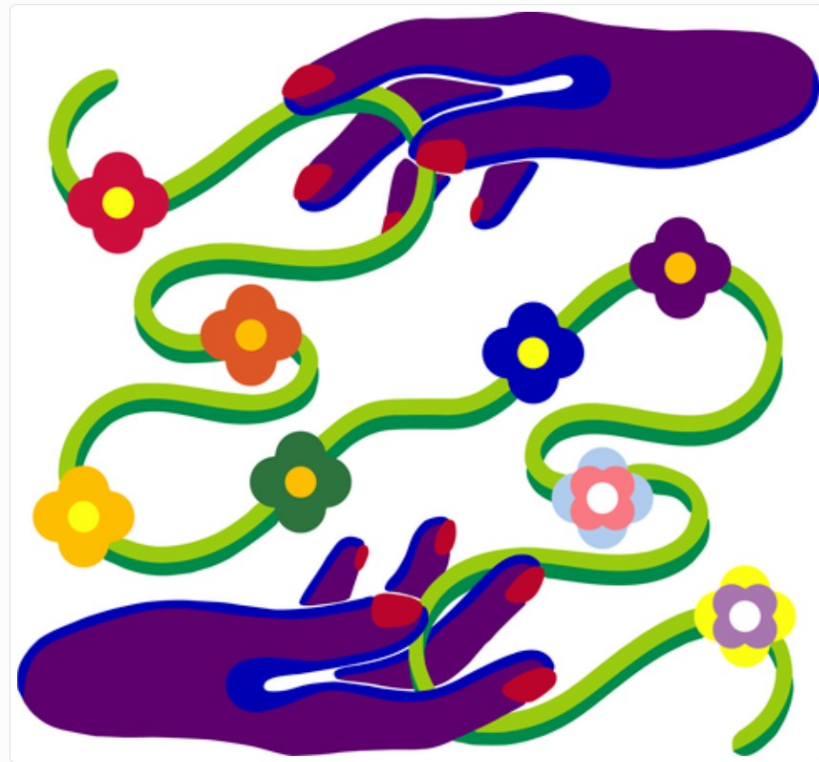


Corridor 6A NE 2nd Street Tour

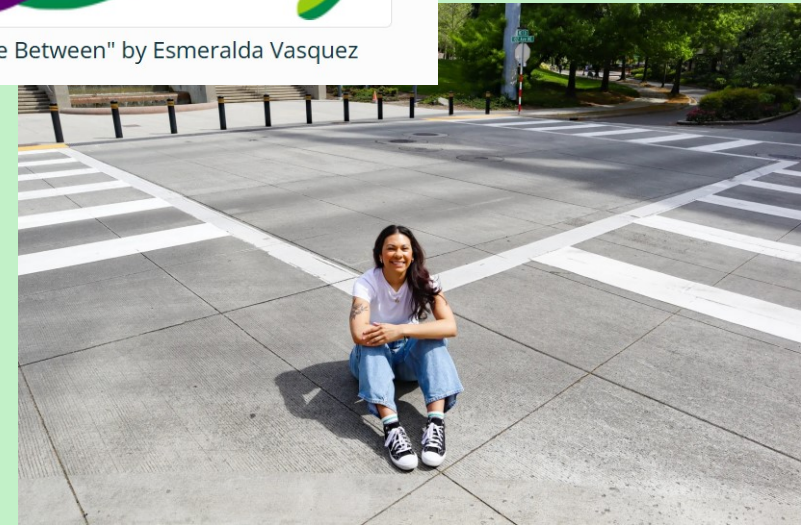


Corridor 6A NE 2nd Street Tour: 'The Love Between'

Bellevue is installing a decorative pavement treatment celebrating LGBTQIA+ pride at the intersection of 102nd Avenue NE and NE 1st Street, just south of Downtown Park. The Transportation Department and the Arts and Culture team in the Community Development Department are jointly leading this project.



Intersection artwork design "The Love Between" by Esmeralda Vasquez



Corridor 6A NE 2nd Street Tour



Corridor 6A NE 2nd Street Tour



Corridor 6A NE 2nd Street Tour



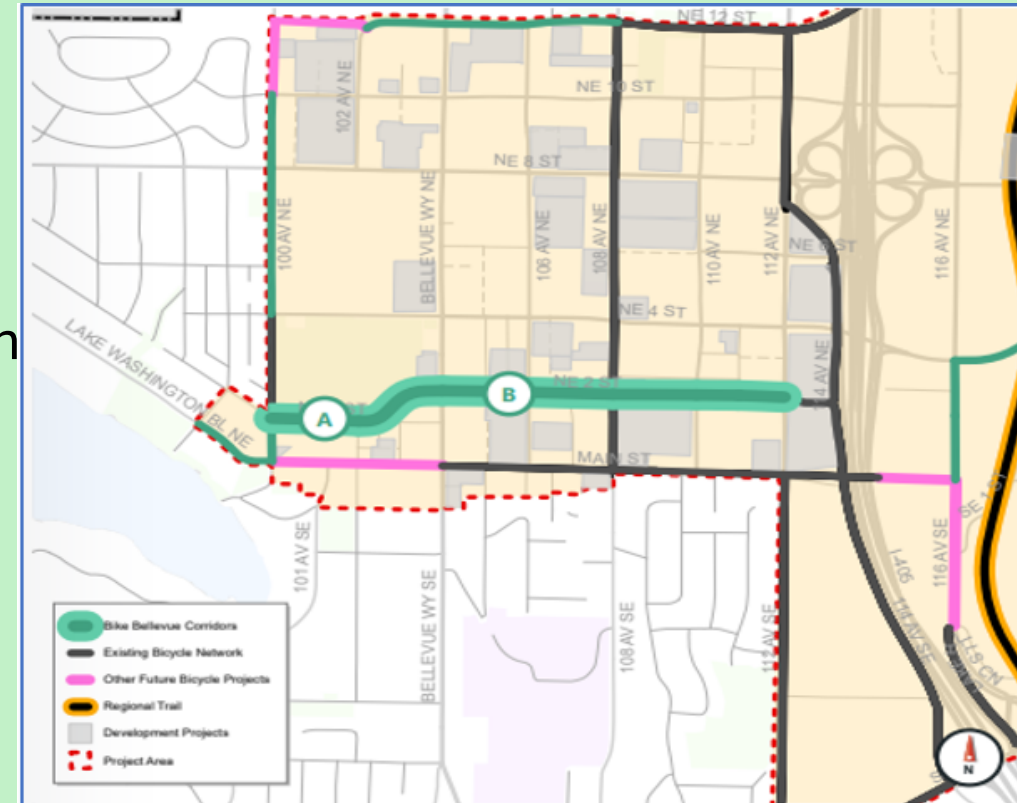
Staff Recommendation

Corridor 6A NE 2nd Street

Initiate final design on Corridor 6A NE 2nd Street with Sharrow lane markings, and other potential corridor enhancements.

Rationale:

- Would not repurpose a travel lane
- Minimal impact to existing and planned driveways
- Sharrows achieve LTS 3 Performance Target
- Sharrows are consistent with recommended application professional engineering guidance standards
 - NACTO
 - ITE
 - MUTCD
 - Bellevue Street Design Standards



NE 2nd Street Corridor 6: 100th Avenue NE - 112th Avenue NE

Staff Recommendation

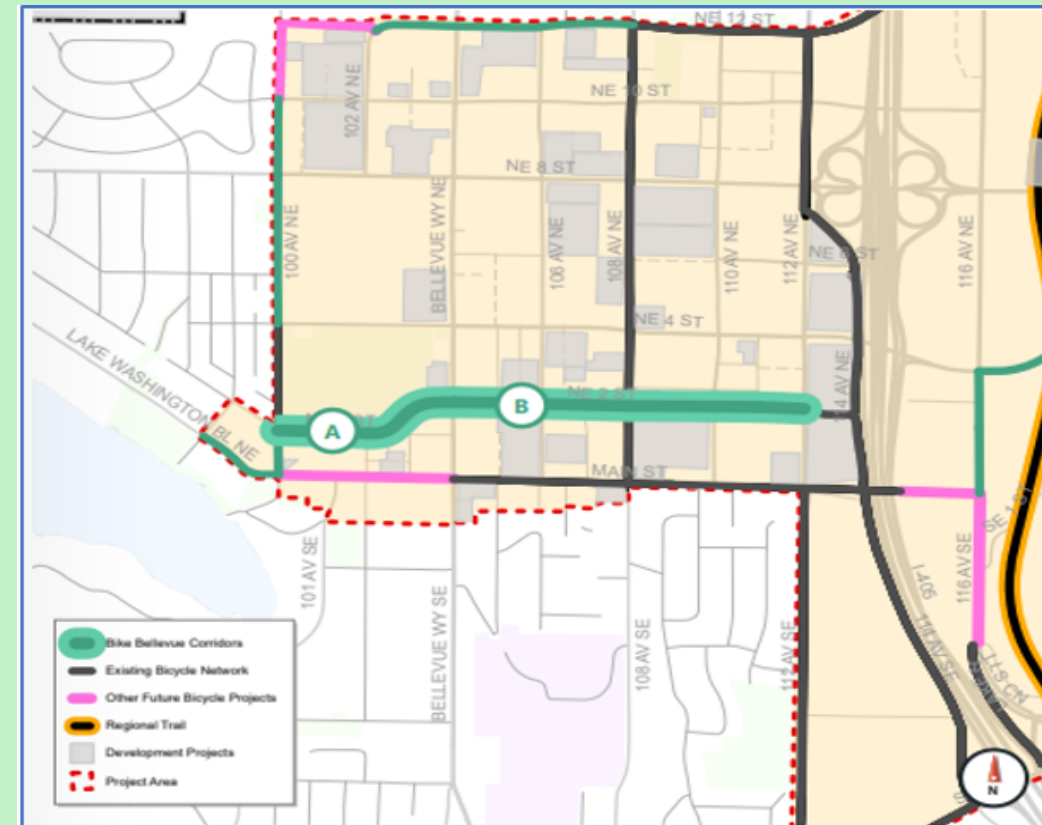
Corridor 6A NE 2nd Street

Existing Design Considerations:

- All-Way Stop at 100th Ave NE
- Pride intersection at 102nd Ave NE

Potential Enhancements for Consideration:

- Corridor Wayfinding
- Speed Limit 20 mph (2025 Downtown study)
- Traffic operations at Bellevue Way
- Modify center lane curbing
- Traffic calming measures
- Evaluate performance and safety– potentially toward a permanent facility in the future

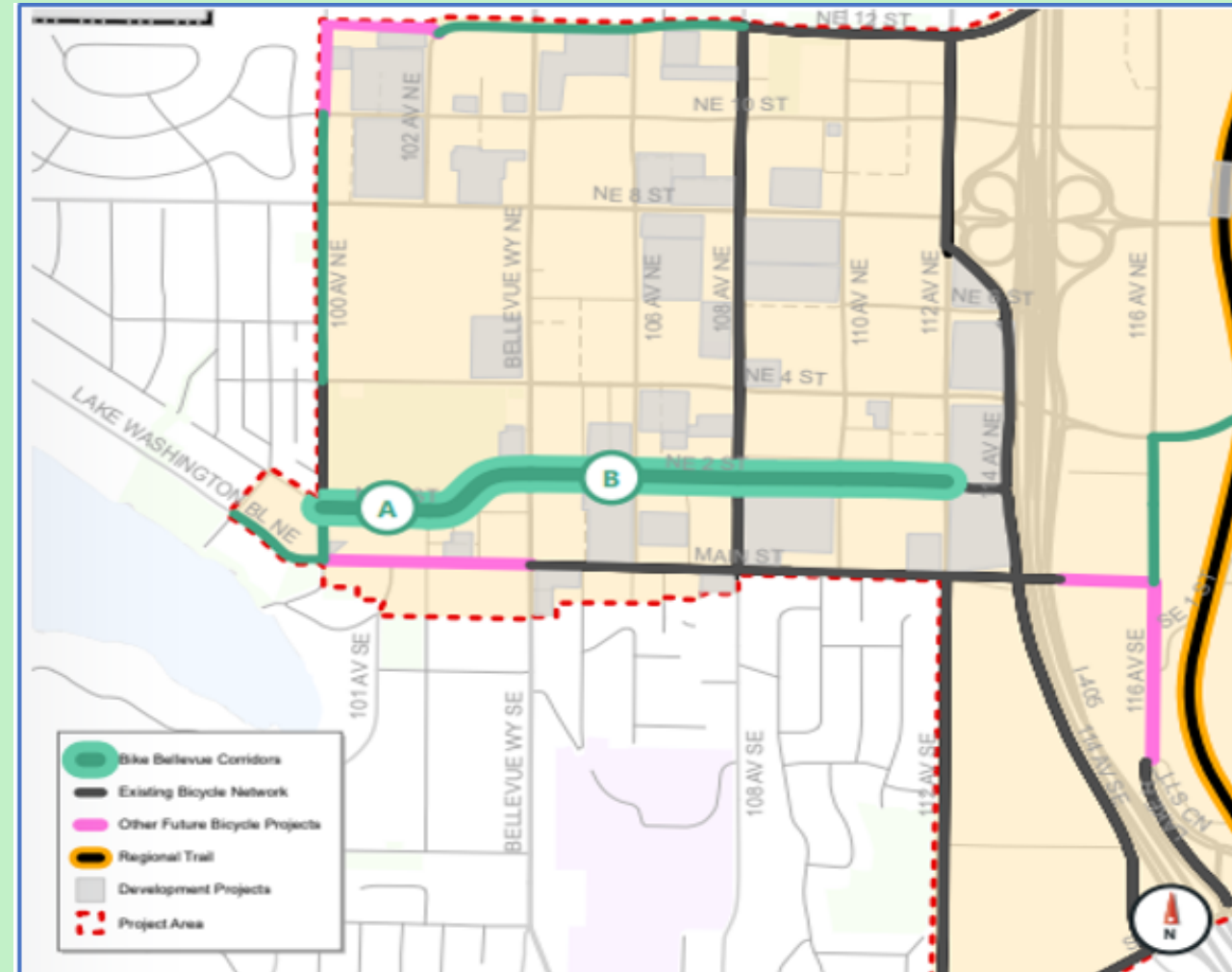


NE 2nd Street Corridor 6: 100th Avenue NE - 112th Avenue NE

Commission Recommendation

Corridor 6A NE 2nd Street

- Discussion
- Questions
- Recommendation to the director of Transportation



NE 2nd Street Corridor 6: 100th Avenue NE - 112th Avenue NE

Bike Bellevue Transition

Next Steps

- Staff will recommend categories for the remaining Bike Bellevue corridors for consideration and recommendation at the June 13 and July 11 Commission meetings.
- Staff will prepare a Management Brief to the City Council regarding the Commission recommendation.
- Mobility Implementation Plan will recommend bicycle network project concepts to address Performance Target gaps (June 13/July 11) for the update of the Transportation Facilities Plan (September 2024).

Bike Bellevue Transition

Thank You

Kevin McDonald, AICP

kmcdonald@bellevuewa.gov

425-452-4558