

2 Line Update
Bellevue City Council

2/12/2024



What we'll cover today:

What's Coming:

- East Link & the 2 Line
 - Project overview and background
 - Project sequencing
- Let's Celebrate!
 - Spring 2024 Activation



***What's Coming:
East Link and the 2 Line***

Approved by voters



1996

Sound Move

Link light rail from Westlake to SeaTac/Airport

Sounder rail from Everett and Tacoma to Seattle

ST Express bus service



2008

ST2

Link to Angle Lake, Bellevue, Redmond, Northgate, Lynnwood, Federal Way

Sounder expansion to South Tacoma, Lakewood



2016

ST3

Link to Ballard, West Seattle, Everett, Tacoma, Kirkland, Issaquah, Downtown Redmond

3 Stride bus rapid transit lines

2 new Sounder stations, more capacity, parking and access improvements



Voter-approved system

Link light rail 1 2 3 4 T

- Five lines
- 116 miles
- 83 stations

Sounder trains N S

- Two lines
- 91 miles
- 14 stations

Stride bus rapid transit S1 S2 S3

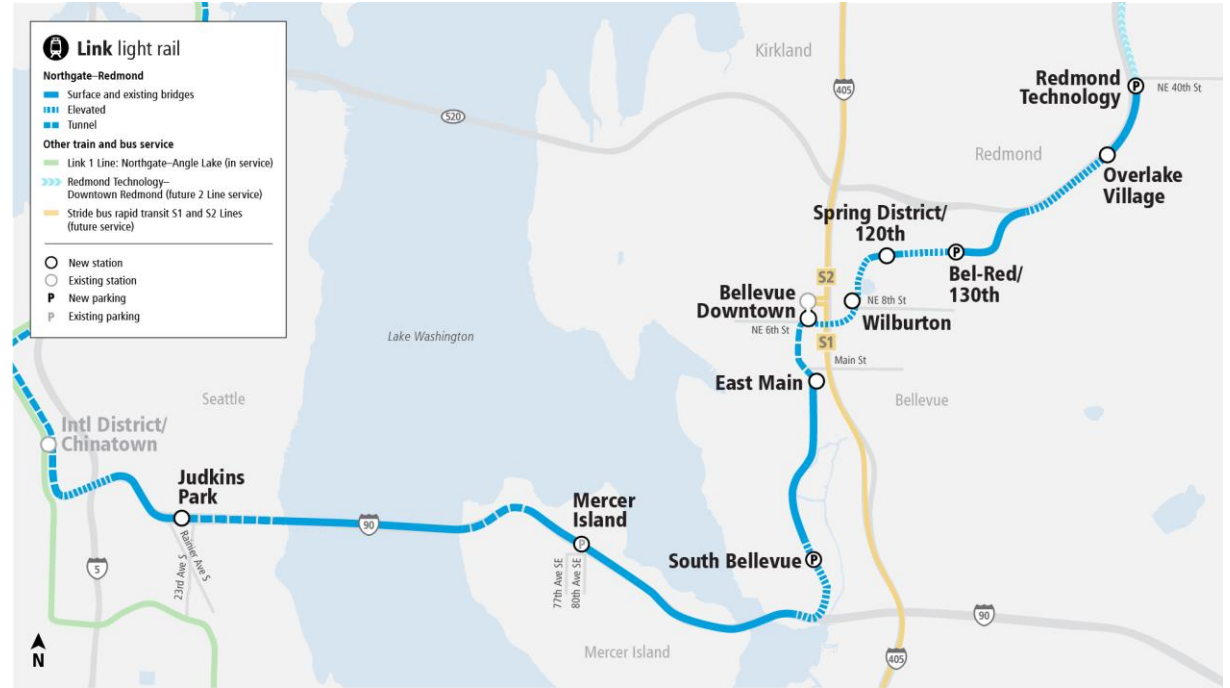
- Three lines
- 45 miles on I-405 and SR 522
- Serving 12 cities and connecting to light rail in Shoreline, Lynnwood, Bellevue, and Tukwila

East Link

East Link

Full Extension Plans:

- 14 miles, 10 stations
- 43,00-52,000 daily riders
- **Full Opening: 2025**



East Link Starter Line

- 7 miles, 8 stations
- Board Approval of 2024 Service Plan
- **Opening: Spring 2024**



East Link: Cross Lake Connection

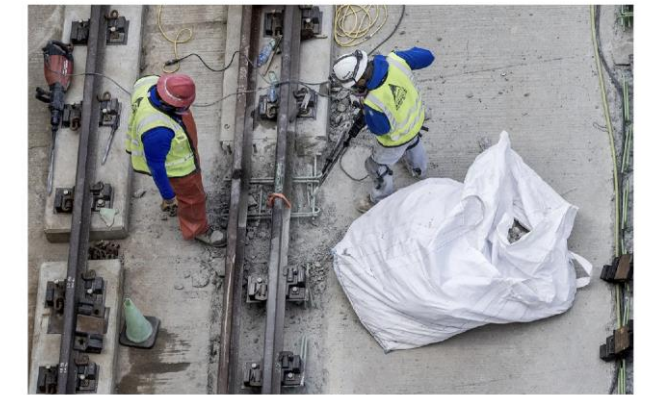
I-90 Segment of East Link delayed

- Construction errors discovered in 2021
- Crews actively working to reconstruct track and plinths that effect cross lake connection and two 2 Line stations:
 - Judkins Park Station (Seattle)
 - Mercer Island Station (Mercer Island)
- I-90 segment of 2 Line service estimated for 2025

☰ The Seattle Times 🔍
Traffic Lab ▾ Log In | Subscribe

Sound Transit's light-rail project to the Eastside is running late

April 28, 2022 at 6:00 am | Updated April 28, 2022 at 4:08 pm



📷 1 of 3 | Workers on Wednesday remove and replace concrete track supports, known as... (Ellen M. Banner / The Seattle Times) More ▾



By Mike Lindblom [🐦](#)
Seattle Times staff reporter

Project Sequencing 2024-2026

Sequencing of Link project openings:



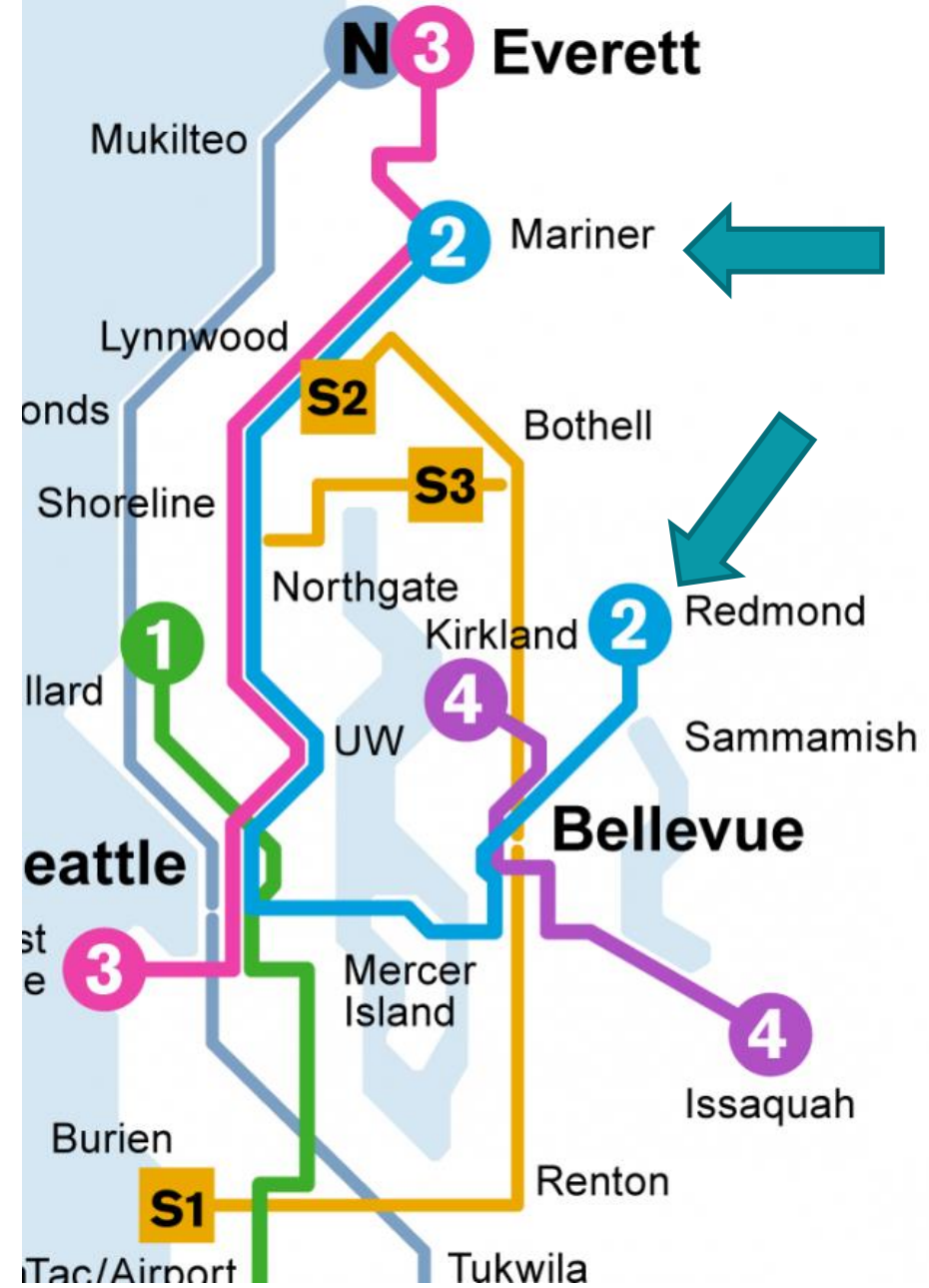
- **ELSL:** East Link Starter Line
- **LLE:** Lynnwood Link Extension
- **DRLE:** Downtown Redmond Link Extension
- **ELE I90:** East Link Extension across I-90
- **FWLE:** Federal Way Link Extension

2 Line

East Link is now 2 Line!

Switching our Vocabulary: East Link will be the 2 Line

- Overall operations and wayfinding
- East Link = project name
- 2 Line = rider experience



2024 System overview

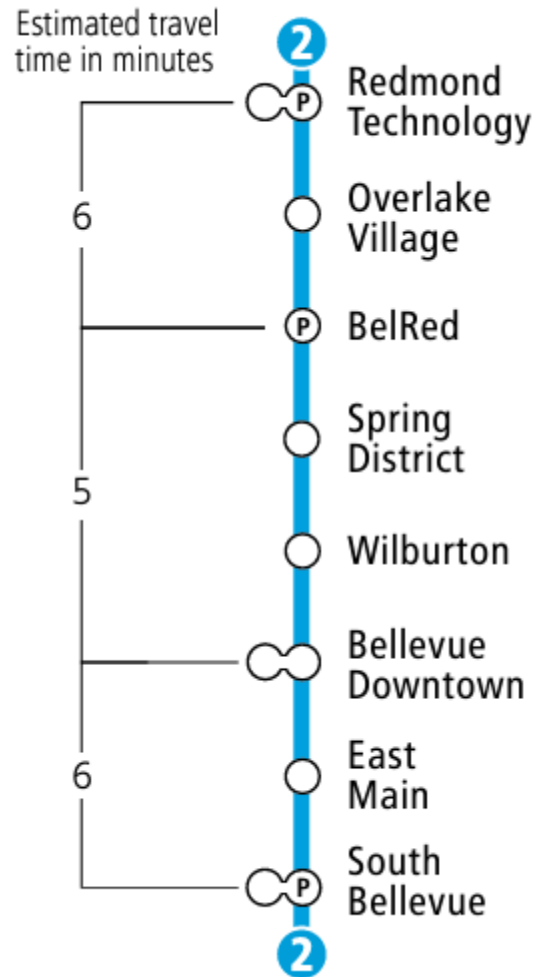
1 Line to Lynnwood

2 Line on the Eastside

- 1 Line to Lynnwood is on schedule to open in summer/fall 2024
- 2 Line will open in spring 2024
 - *Will operate out of OMF East

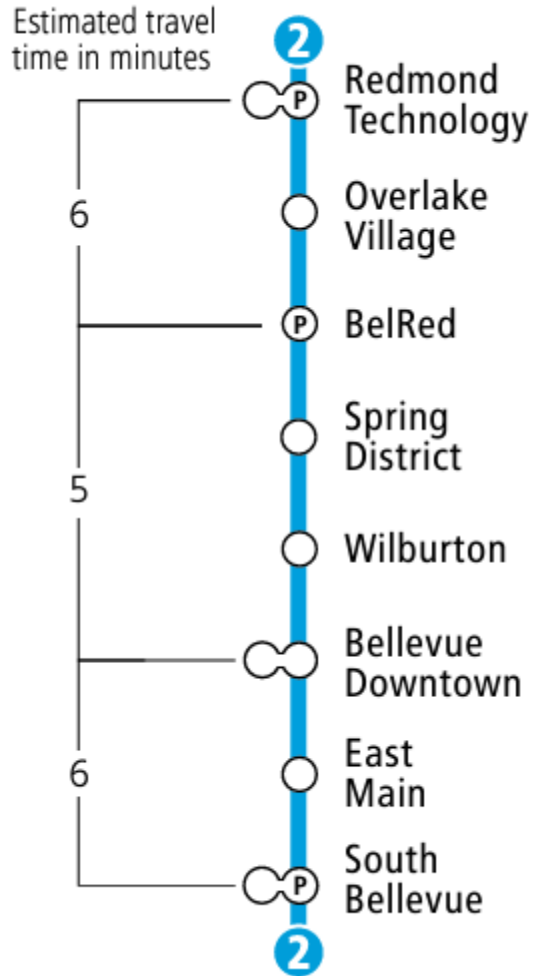


Benefits of opening the initial segment



- Introduces light rail service to the Eastside
- Activates a 6.5-mile segment with 8 stations
- Chance to connect major Eastside destinations, including employment centers and neighborhoods

Operating hours and headways



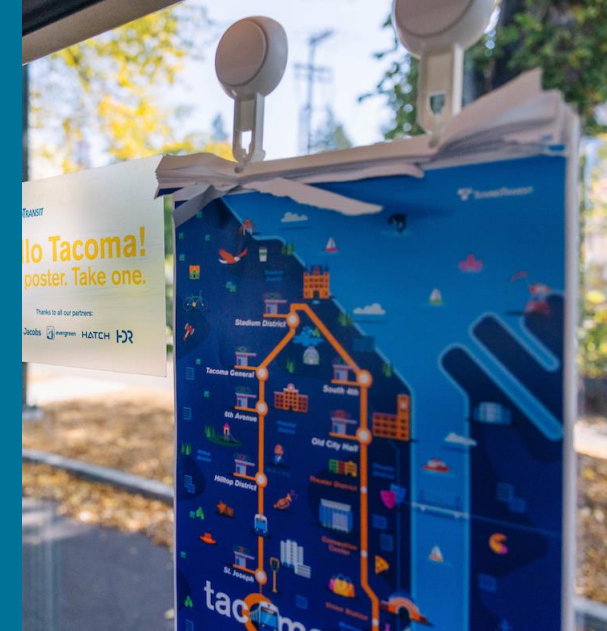
- Link trains will arrive every 10 minutes
- Trains will operate from 5:30am to 9:30pm, 7 days a week
- Approximately 17 minutes from S. Bellevue to Redmond Technology Station
- 2 car trains
- All stations are ADA accessible

Let's Celebrate!

Example of Sound Transit Openings

Recent Link Celebrations





Spring 2024 Activation and Opening Day

- *Working with Community to celebrate opening day*
 - Activations planned for each of the 8 new stations
 - Collaborating with community partners and private organizations to celebrate 2 Line opening
- *Ribbon Cutting Location: Bellevue Downtown Station*
- *Spring 2024: Grand Opening!*

Questions & Discussion

Thank you.

Thank you.



 [soundtransit.org](https://www.soundtransit.org)

