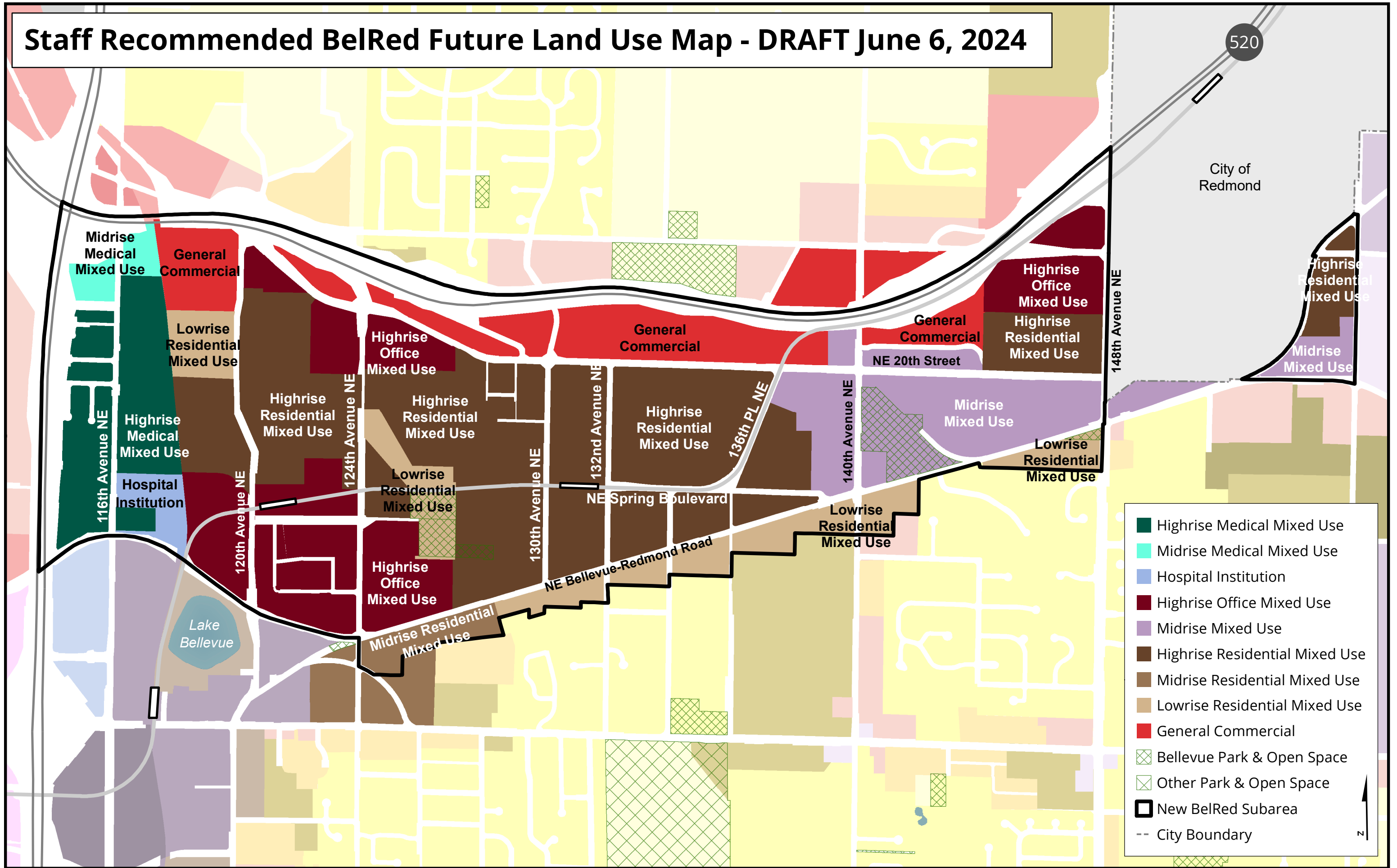


Staff Recommended BelRed Future Land Use Map - DRAFT June 6, 2024



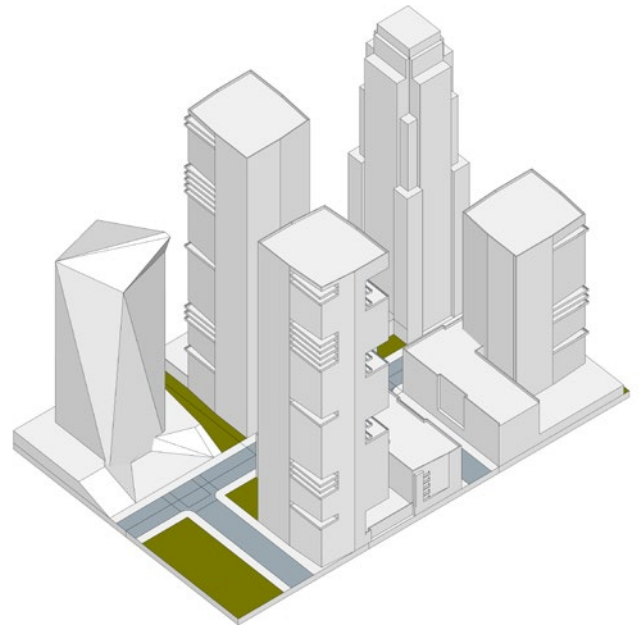
- Highrise Medical Mixed Use
- Midrise Medical Mixed Use
- Hospital Institution
- Highrise Office Mixed Use
- Midrise Mixed Use
- Highrise Residential Mixed Use
- Midrise Residential Mixed Use
- Lowrise Residential Mixed Use
- General Commercial
- Bellevue Park & Open Space
- Other Park & Open Space
- New BelRed Subarea
- City Boundary

# Future Land Use Map Key

## MIXED USE

### Downtown

The purpose is to provide an area for a mix of housing, retail, service, office and complementary uses at the **highest scale and density** (see illustration). The scale and density may be reduced by overlay districts.



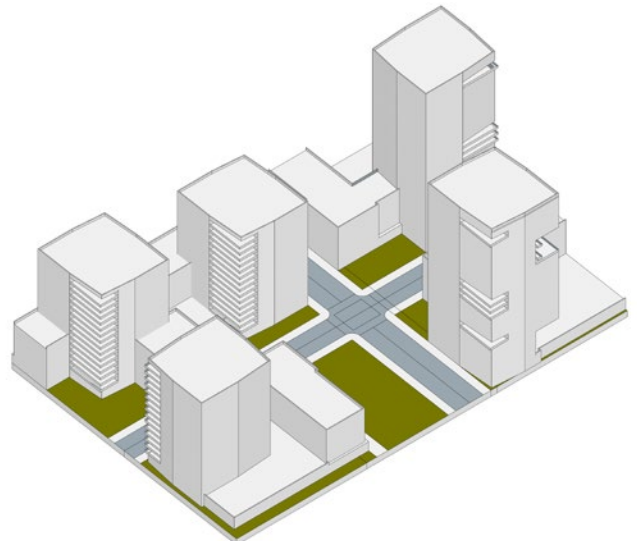
**Highest scale and density**

### Urban Core

The purpose is to provide an area for a mix of housing, retail, service, office and complementary uses at the **highest scale and density** (see illustration), close to Downtown and light rail stations.

### Highrise Mixed Use

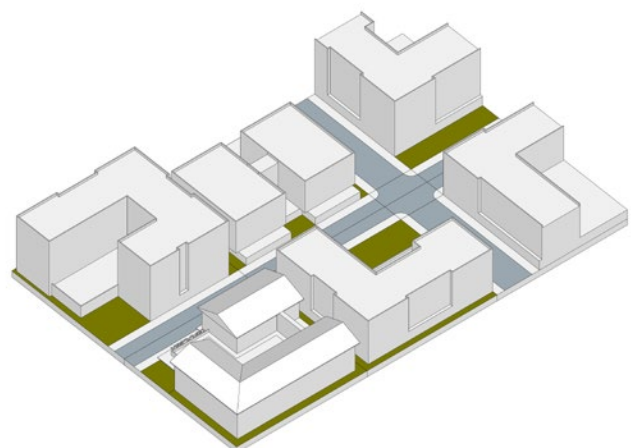
The purpose is to provide an area for a mix of housing, retail, service, office and complementary uses at a **high scale and density** (see illustration).



**High scale and density**

### Midrise Mixed Use

The purpose is to provide an area for a mix of housing, retail, service, office and complementary uses at a **middle scale and density** (see illustration).



**Middle scale and density**

### Lowrise Mixed Use

The purpose is to provide an area for a mix of housing, retail, service, office and complementary uses at a **low scale and density** (see illustration).

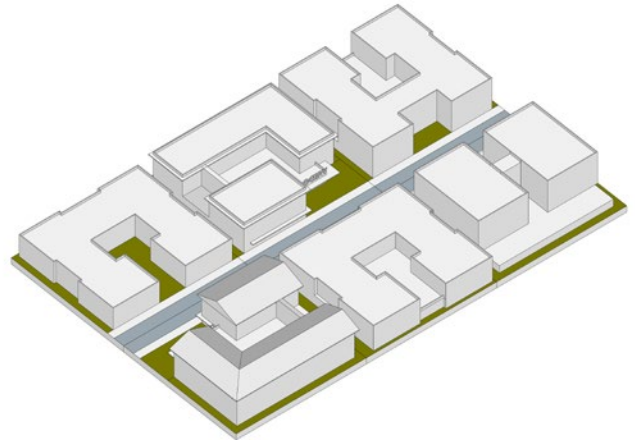
### Highrise Office Mixed Use

The purpose is to provide a mix of office, housing, retail, service and complementary uses with a focus on office uses at **high scale and density** (see illustration).



### Midrise Office Mixed Use

The purpose is to provide a mix of housing, retail, service, office and complementary uses with a focus on office uses at **middle scale and density** (see illustration).



**Low scale and density**



### Lowrise Office Mixed Use

The purpose is to provide a mix of office, housing, retail, service and complementary uses with a focus on office uses at **low scale and density** (see illustration).



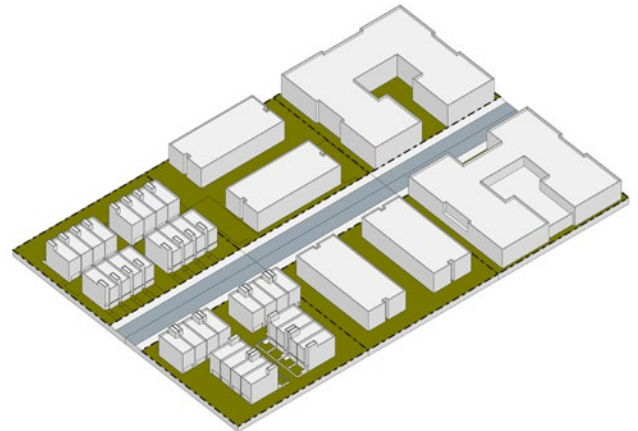
### Highrise Medical Mixed Use

The purpose is to provide a mix of laboratories, office, housing, retail, service, and complementary uses with a focus on medical uses at **high scale and density** (see illustration).



### Midrise Medical Mixed Use

The purpose is to provide a mix of laboratories, office, housing, retail, service and complementary uses with a focus on medical uses at a **middle scale and density** (see illustration).



**Middle urban residential scale and density**



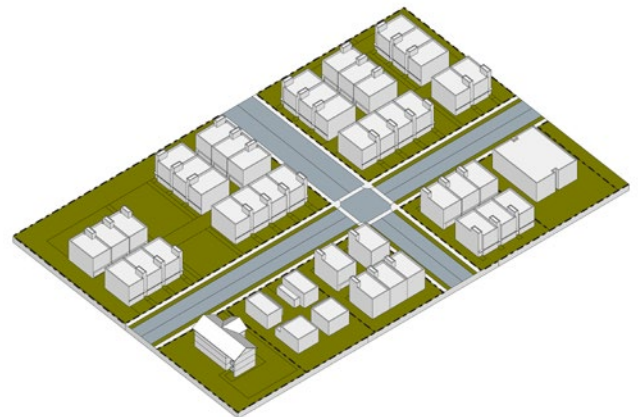
### Highrise Residential Mixed Use

The purpose is to provide primarily housing with a mix of retail, service, office and uses that compliment with a focus on housing at a **high scale and density** (see illustration).



### Midrise Residential Mixed Use

The purpose is to provide primarily housing with a mix of retail, service, office and uses that compliment with a focus on housing at **middle scale and density** (see illustration).



**Lower urban residential scale and density**



### Lowrise Residential Mixed Use

The purpose is to provide primarily housing with a mix of retail, service, office and uses that complement with a focus on housing at **low scale and density** (see illustration).

## RESIDENTIAL

### High Density Residential

The purpose is to provide for residential and complementary uses at a **low scale and density** (see illustration), similar to lowrise mixed use.

### Medium Density Residential

The purpose is to provide for residential and complementary uses at a **middle urban residential scale and density** (see illustration).

### Low Density Residential

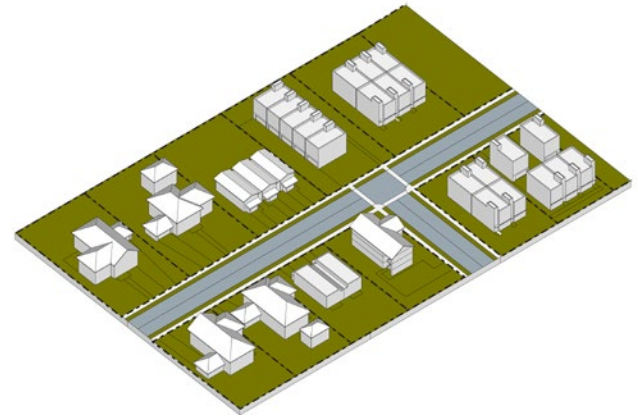
The purpose is to provide for residential and complementary uses at a **lower urban residential scale and density** (see illustration).

### Suburban Residential

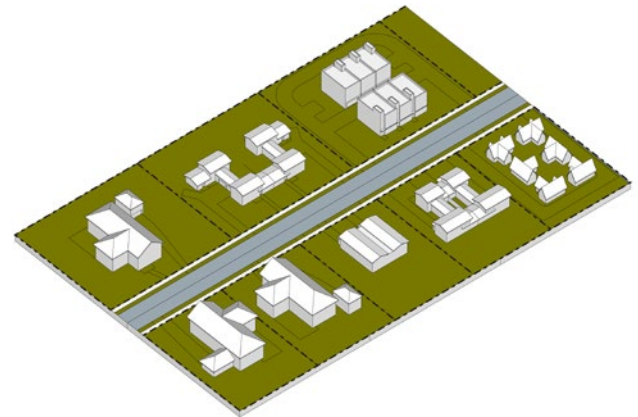
The purpose is to provide for residential and complementary uses at a **typical suburban density** (see illustration).

### Large Lot Residential

The purpose is to provide for residential and complementary uses on large lots at a **spacious scale and density** (see illustration).



Typical suburban scale and density



Spacious scale and density

## OTHER USES

### General Commercial

The purpose of this district is to provide primarily office, retail and service uses.

### Light Industrial

The purpose is to provide light industrial uses.

### Institutional

The purpose of this district is to provide for institutional uses like colleges.

### Hospital Institutions

The purpose is to provide Hospital uses and building styles.