



City of Bellevue

Recognition for NE Spring Boulevard

Andrew Singelakis, Transportation Director

June 7, 2021



Information Only

AGENDA



Project Construction History



Project Features



Project Awards



Thank You!

Project Construction History

- **May 2016** – Demolition contract awarded for Teledesic Building
 - **July 2016** – Zone 1B construction contract awarded, fast-tracked ahead of light rail
 - **November 2018** – Zone 1A construction contract awarded
 - **September 2019** – Zone 2 construction contract awarded
 - **October 2020** – Ribbon cutting

Project Features

0.5

Mile new multimodal road

2

Bridges over East Link & Eastrail

4

Lanes with turn pockets

5

New traffic signals

12 & 16

Inch diameter new water mains



BEFORE: Two bridges on NE Spring Blvd under construction. (2018)



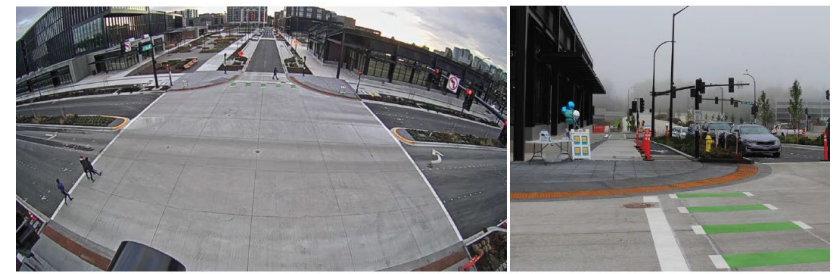
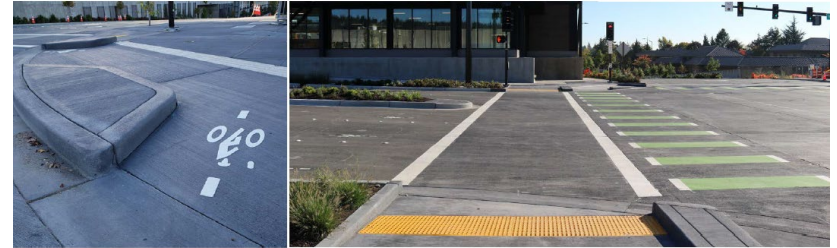
AFTER: Aerial view of NE Spring Blvd Zones 1 and 2 with light rail tracks beneath two new bridges. (2020)

Project Features

Protected intersections separate peds, bikes, cars

Multipurpose path, cycle path provide connections

Pedestrian scramble near future East Link station



Project Features

Urban Design

- Materials reflect BelRed vision

Low-Impact Development

- Bioretention swales, Silva Cells

Landscape-Amenities Zone

- Complements adjacent Transit-Oriented Development



Completed Project



Photo Courtesy King County DNR/Parks





Project Awards

- Washington Chapter, American Public Works Association, 2021 Project of the Year (\$25-75M category)
- Seattle Chapter, American Society of Civil Engineers, 2021 Outstanding Civil Engineering (over \$10M)
- Washington Chapter, American Council of Engineering Companies, 2021 Engineering Excellence Award

Thank You!

- MANY Bellevue staff had a role in the success of the project:
 - *Steve Costa – Bellevue Project Manager*
 - *TingTing Ma – Bellevue Transportation Engineer*
 - *Brad Wheeler – Bellevue Construction Project Manager*
 - *Todd Hopkins – Bellevue Senior Inspector*
- **HDR Engineering, Inc.:** Project design and engineering
- **Johansen Excavating, Inc. (Zone 1B); KLB Construction (Zone 1A), Interwest Construction, Inc. (Zone 2):** Project construction
- **Sound Transit, Wright Runstad & Co.:** Stakeholders