



# RAPIDRIDE

## RapidRide K Line Update Bellevue City Council

June 11, 2024

---

*Pierce Canser, System Expansion and Integration Supervisor*

*Lluvia Ellison-Morales, Sr. Community Engagement Planner*

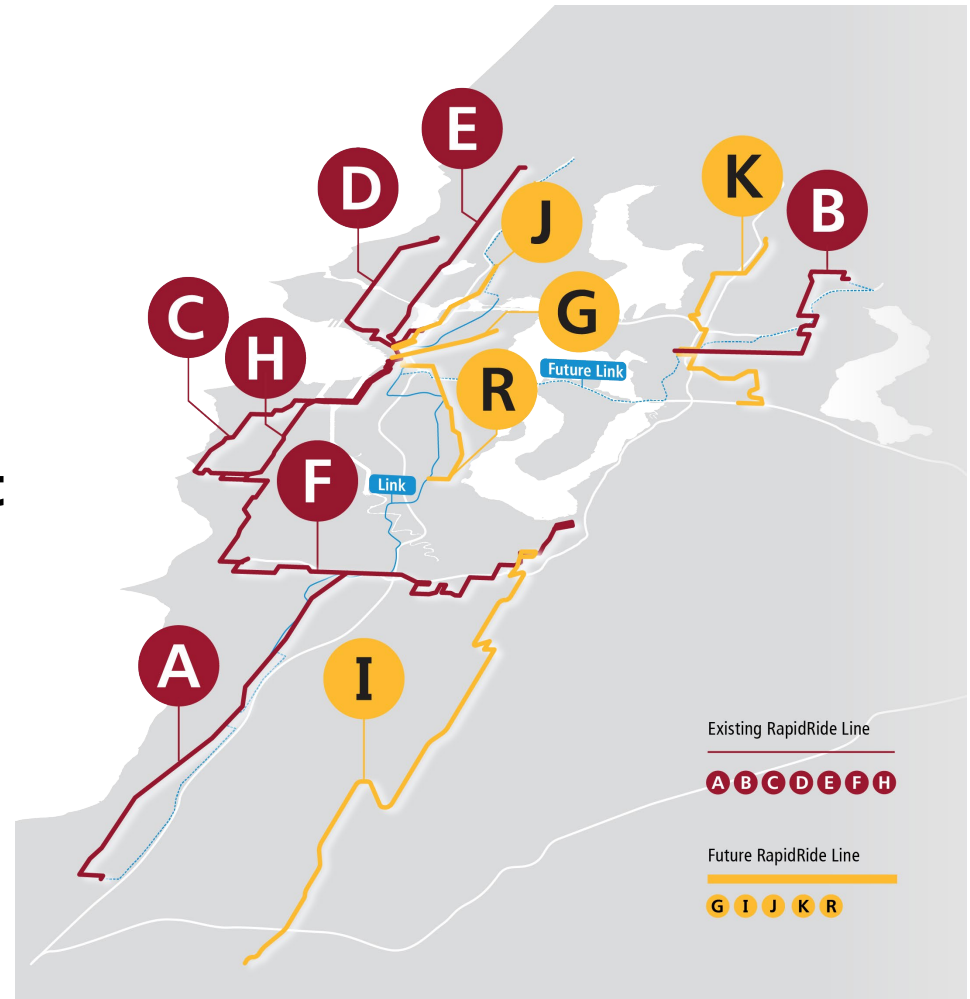
*Ryan Whitney, RapidRide Lead, K Line*

*Amanda Pleasant-Brown, Government Relations Jurisdictional Lead*

# Agenda



- **Project History**
- **K Line Overview**
- **K Line Current Efforts**
- **Community Engagement**
- **Next Steps & Schedule**

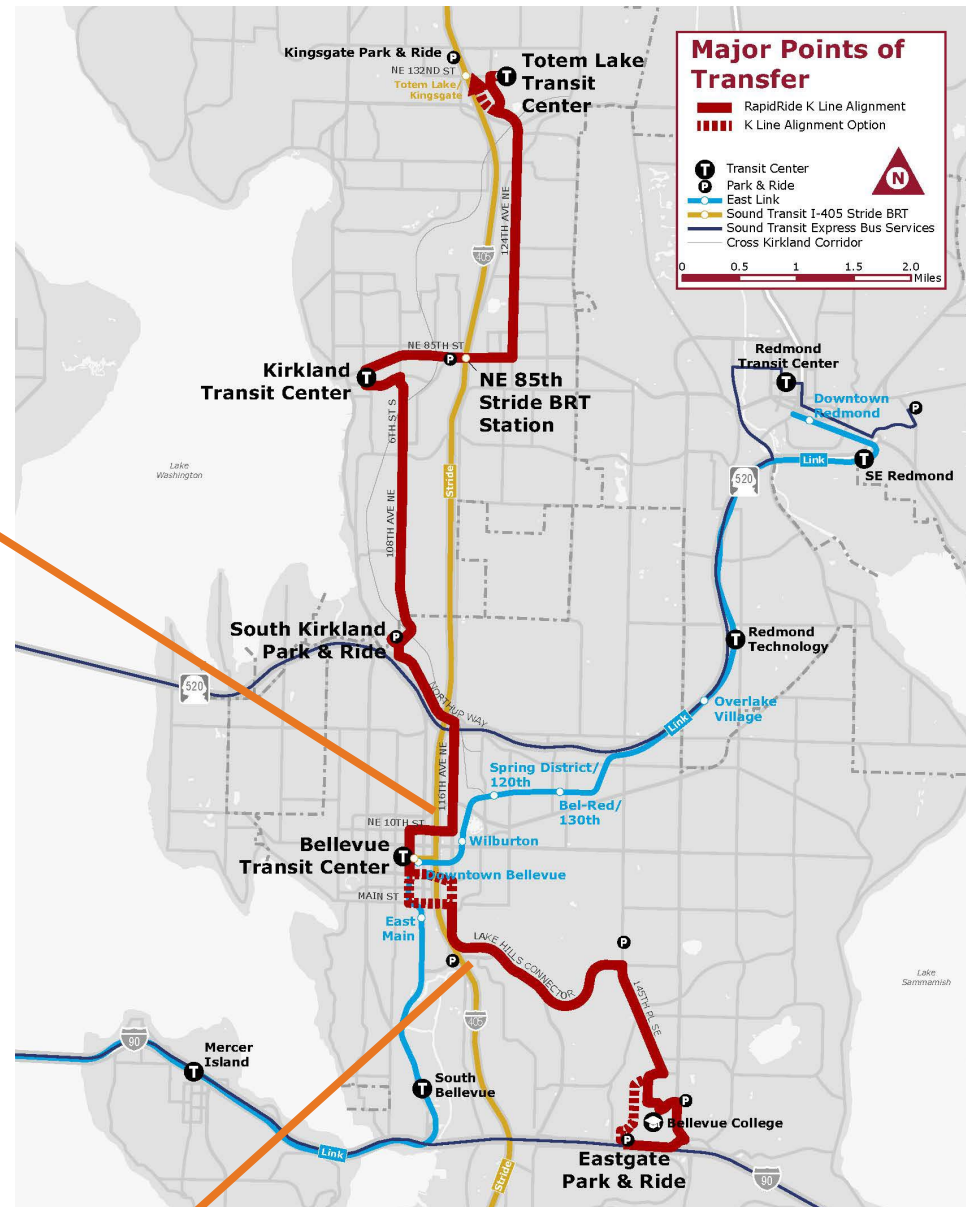
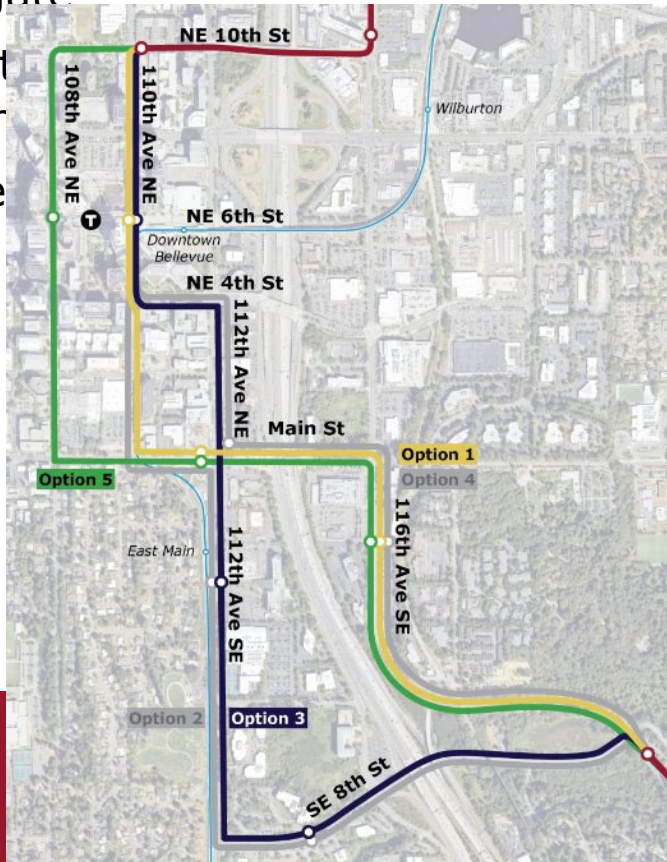






# K Line Overview

- 18 Mile Corridor
- Key Connections: ST 405 BRT, Link, B Line
- Totem Lake, downtown Kirkland & Bellevue, Bellevue College, & Eastgate
- Priorit
- Visior
- Curre

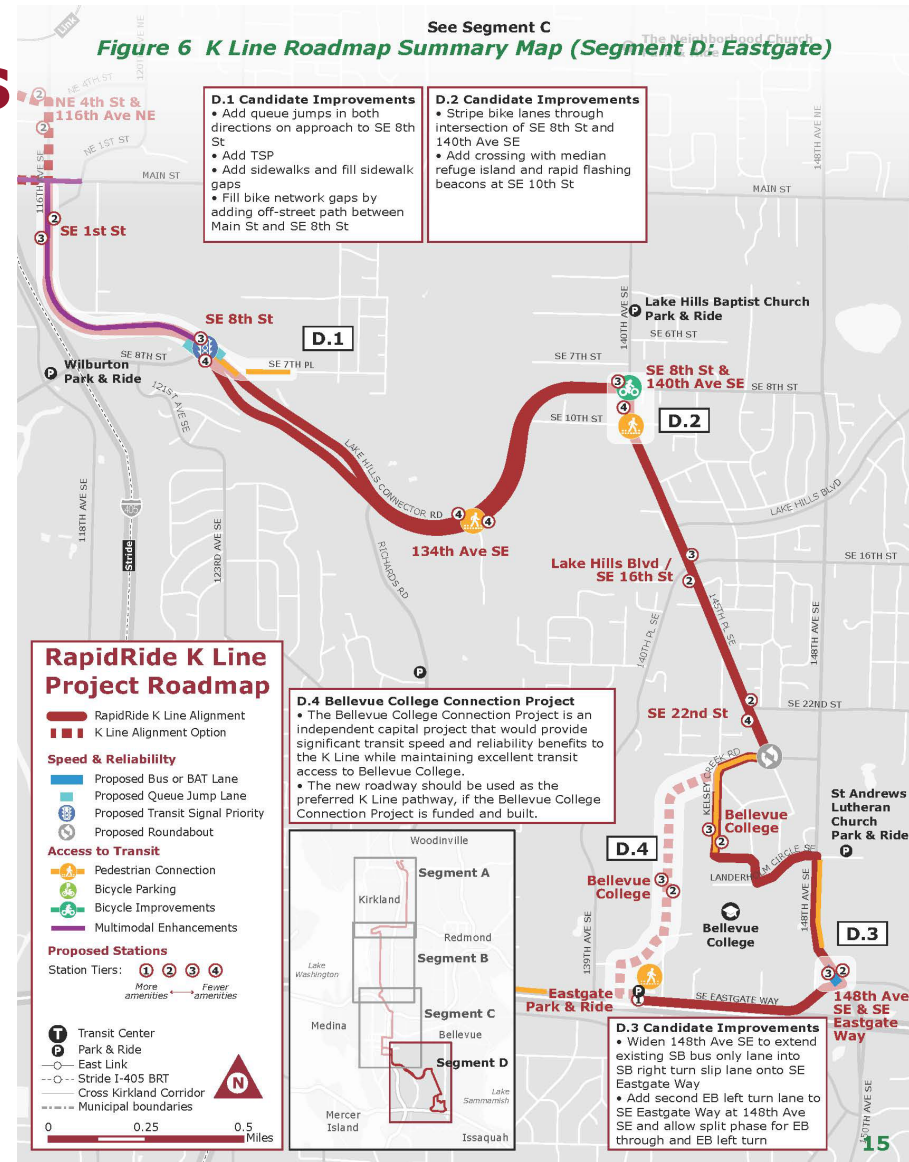


# K Line Current Efforts

## On-going Discussions with City of Bellevue and City of Kirkland

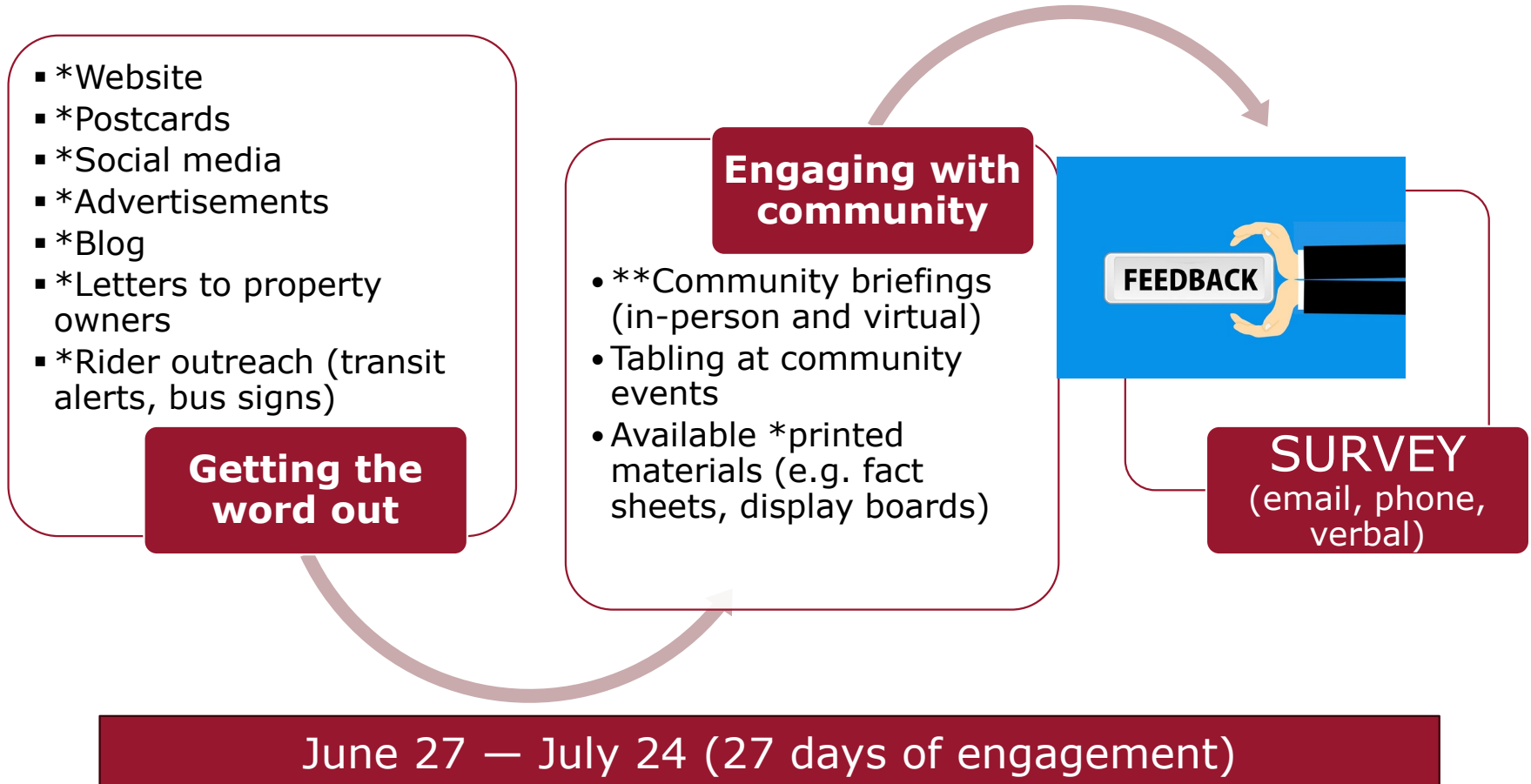
- Review Planning level assumptions
- Presentation of Speed & Reliability Concepts
- Confirm alignment with local Comprehensive Plans & select preferred K Line route in key areas
- Identify multimodal improvements to ensure safe, convenient access to transit
- High-level transit facility design

**Working towards completion of Planning Phase by Q3 2024**





# Community Engagement Methods

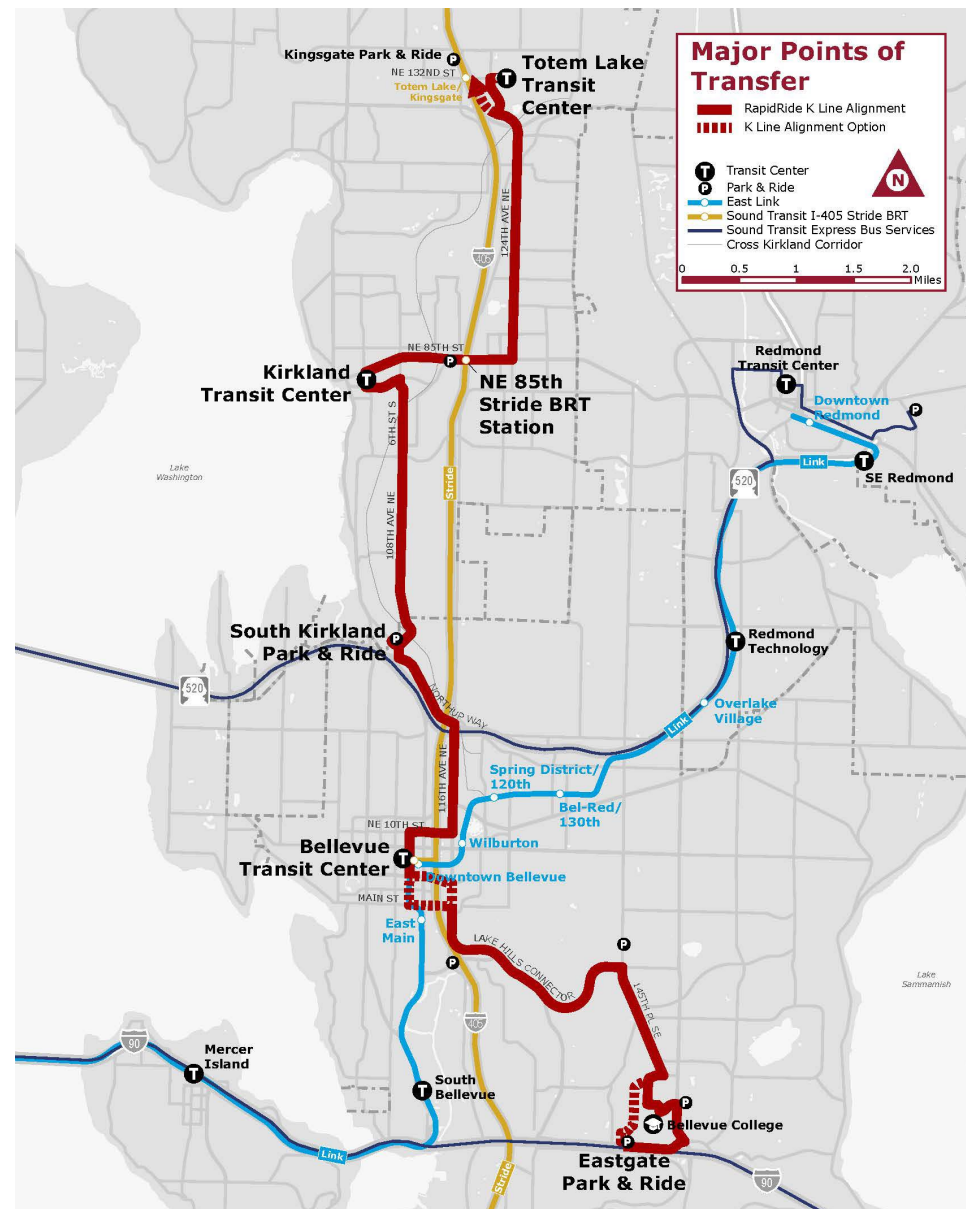


*\*material provided as a multilingual resource*

*\*\*interpretation, including ASL, to be provided as needed*

# Next Steps

- Continued technical coordination and scope refinement
- Robust community engagement
- Fine tune priorities for LPA scope
- Identify how best to deliver our shared vision for the project
  - Grant & Funding roles and opportunities
  - Design & Delivery roles and processes
- Document for future success
  - Letters of concurrence & support
  - Agreements





# Project Schedule

