



City of Bellevue

Sustainable Bellevue

2026-2030 Plan Update

Thara Johnson, Jennifer Ewing, and Colin Munson
Community Development

July 22, 2025



Information

Tonight's Study Session is for information only. Staff will present progress towards implementing the 2021-2025 plan and provide an update on Phase II of the 2026-2030 Sustainable Bellevue Plan update, including draft strategies.

AGENDA



Timeline & Background



Community Sustainability Priorities



April Study Session Recap



2030 & 2050 Goals Update



Draft Strategies Overview

Sustainable Bellevue Plan Context

- Current Plan adopted by Council December 14, 2020
- Achieving Comp Plan policy vision
- Community and Municipal Operations Strategies and Actions



ENERGY &
BUILDINGS



MOBILITY &
LAND USE



MATERIALS
& WASTE



CLIMATE
CHANGE



NATURAL
SYSTEMS

Timeline



Updated Plan Goals

ENERGY & BUILDINGS

- Transition to 100% Renewable Energy
- Reduce Overall Energy Use

MOBILITY & LAND USE

- Encourage Sustainable Commutes
- Reduce Vehicle Trips
- Locate Jobs and Housing Near Transit
- Transition to 100% Electric Vehicles

NATURAL SYSTEMS

- Realize "City in a Park" Vision
- Promote Healthy Streams
- Conserve Water

CLIMATE CHANGE

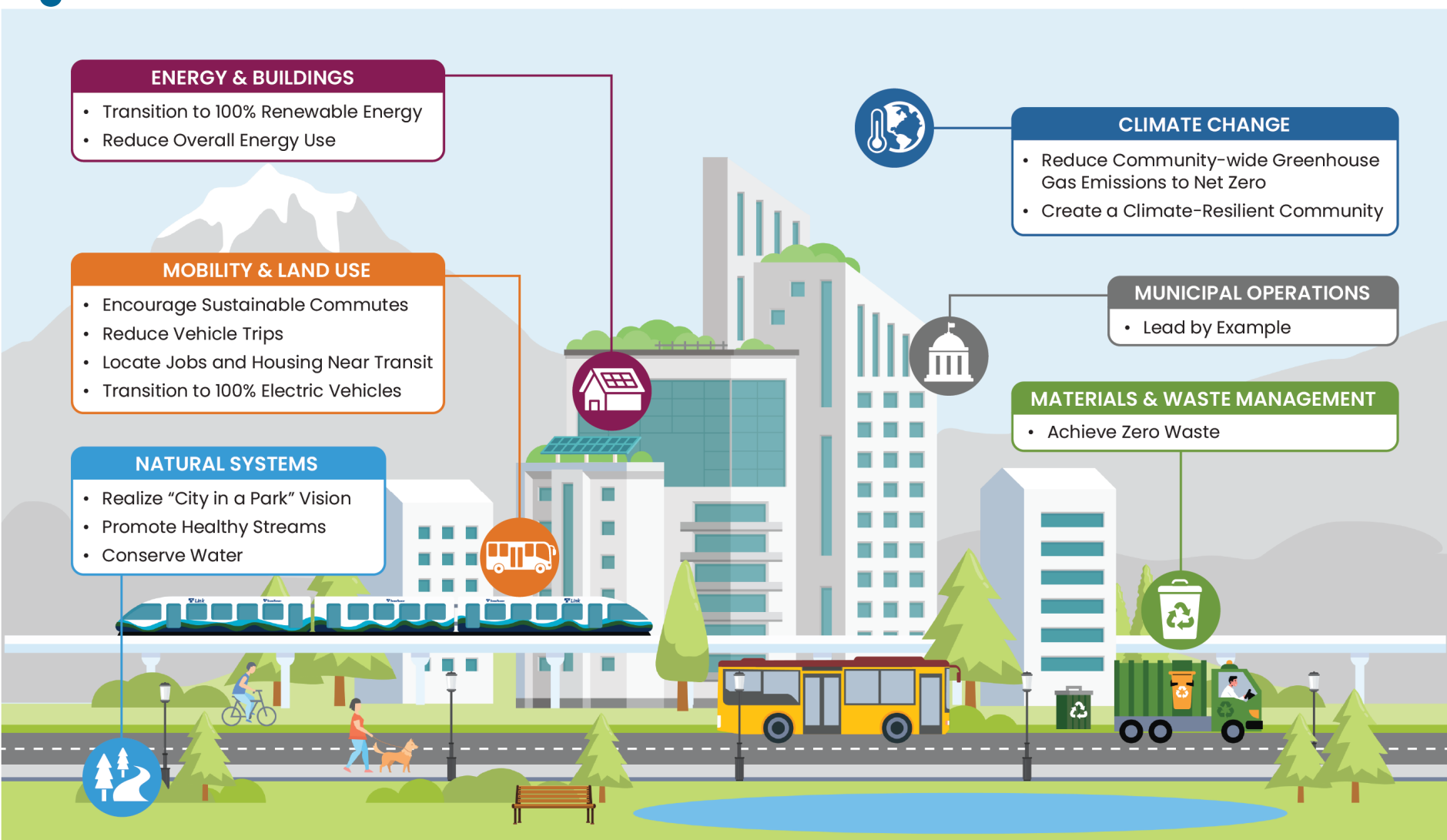
- Reduce Community-wide Greenhouse Gas Emissions to Net Zero
- Create a Climate-Resilient Community

MUNICIPAL OPERATIONS

- Lead by Example

MATERIALS & WASTE MANAGEMENT

- Achieve Zero Waste



Community Engagement: Priorities



**BOLD
CLIMATE
ACTION**



**COMMUNITY
RESILIENCE**



**SUPPORT FOR
RENTERS AND
MULTIFAMILY
BUILDINGS**



**WASTE
REDUCTION**

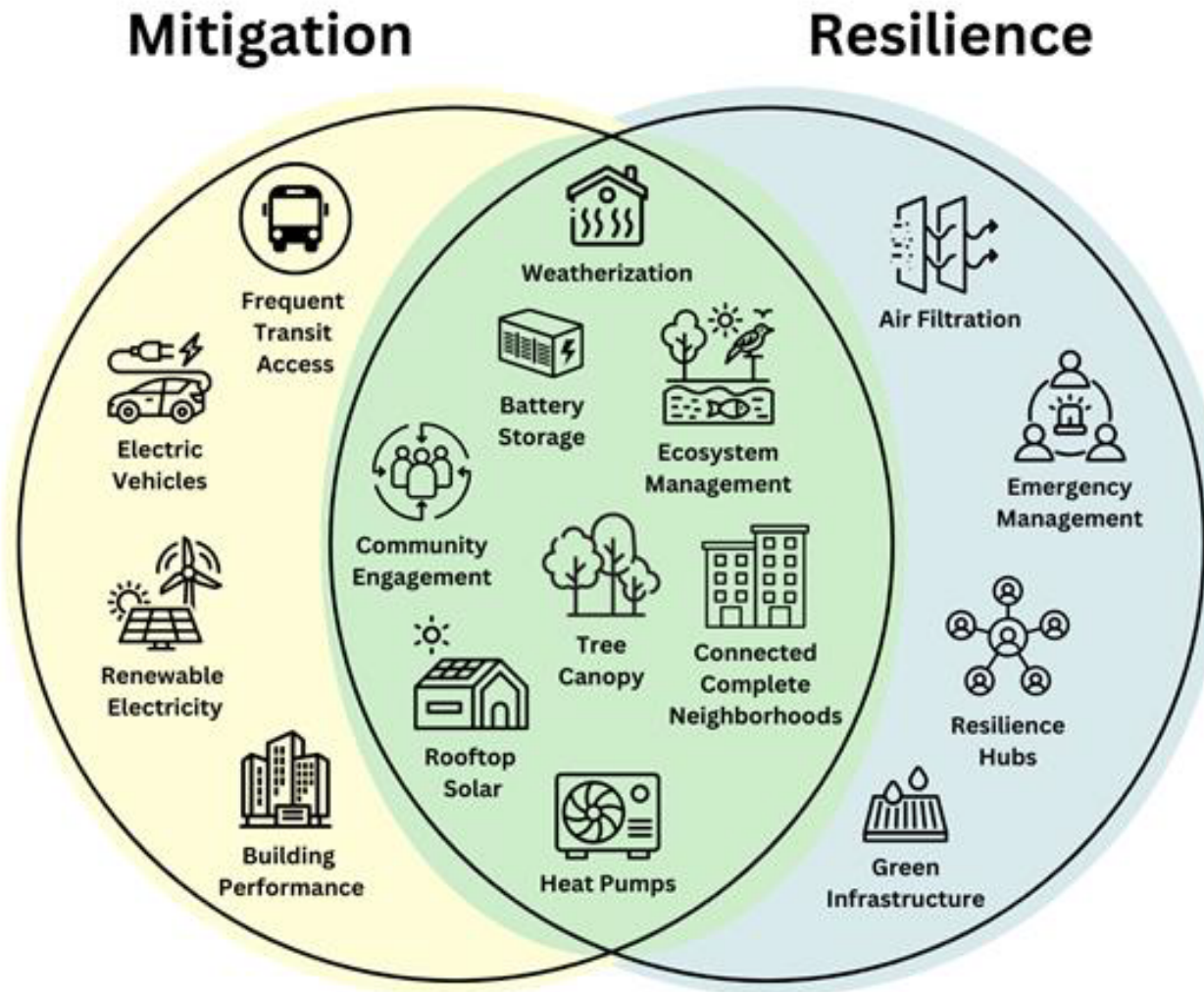


**TRANSIT ACCESS
& WALKABILITY**



**ENERGY
EFFICIENCY &
GRID RESILIENCE**

What is Climate Resilience?



April Study Session

Council Questions

- Are we on track for 2030 goals?
- What strategies will have the greatest impact?



Achieving City Operations Climate Goals

- ***Exceeded*** our 2030 Municipal Operations GHG reduction goal
- Highly effective at meeting targets where we have full control



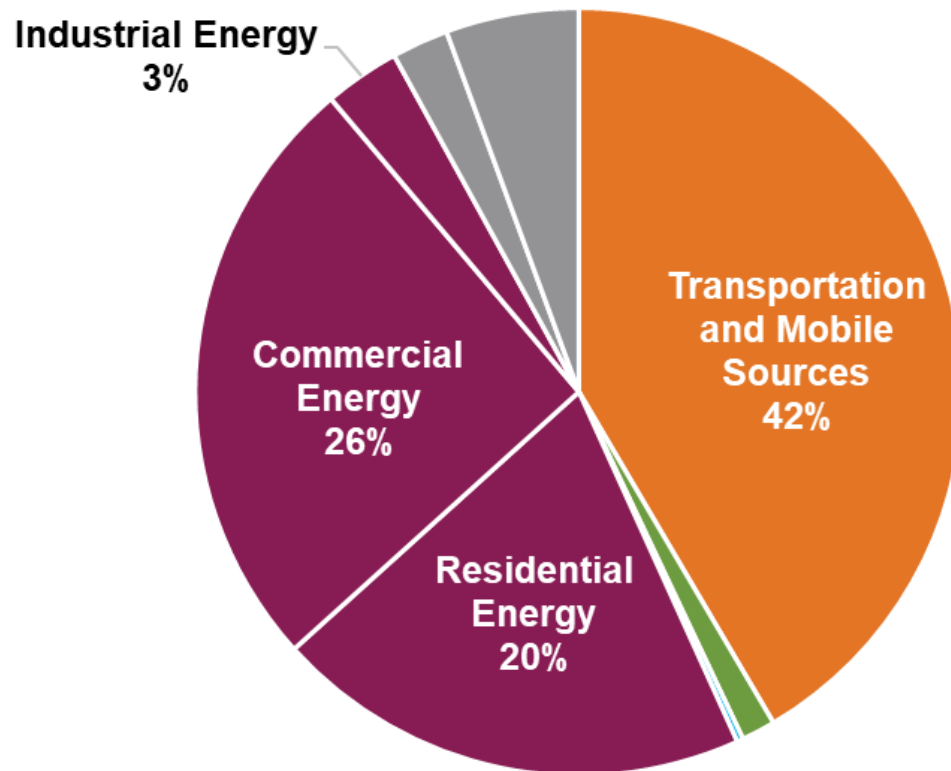
Achieving Community Climate Goals

High-Impact Strategies:

- Decarbonizing existing buildings
- Reducing Vehicle Miles Travelled (VMT)

Foundational Strategies:

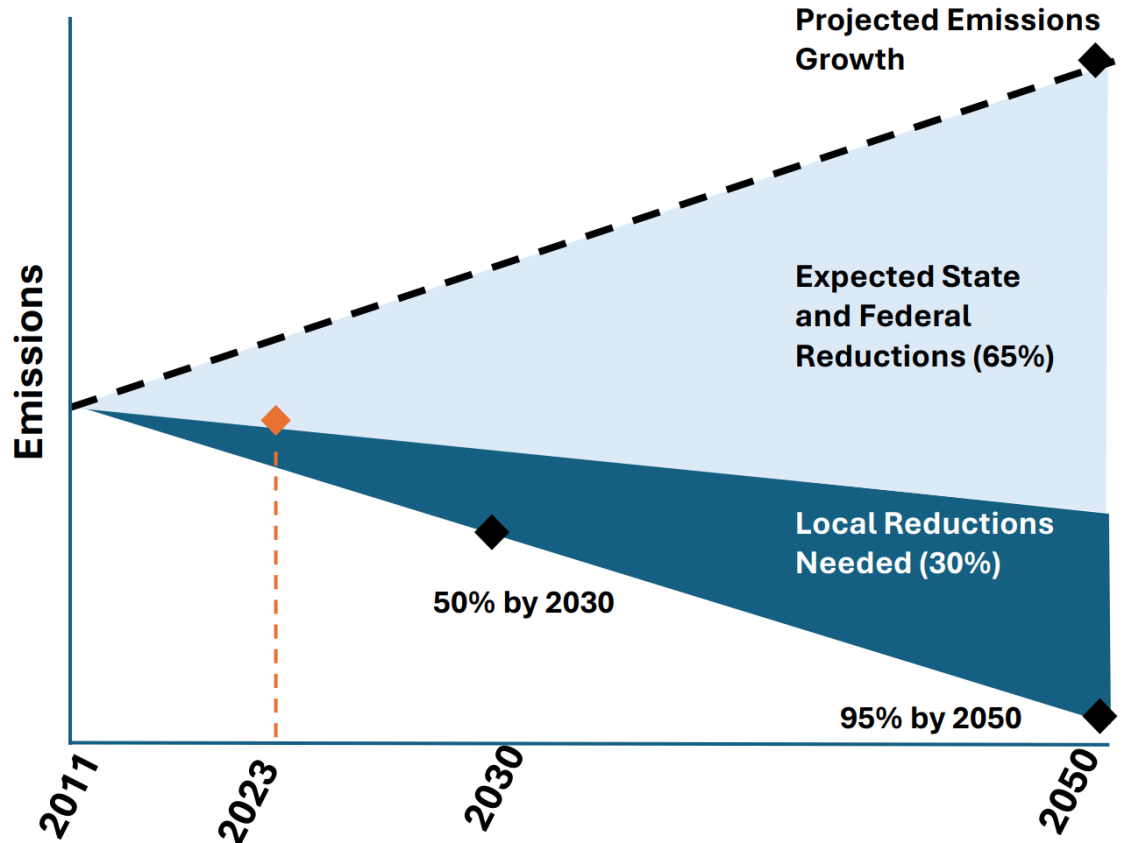
- Building community resilience
- Sustainability funding



*Bellevue's Community-wide GHG Emissions
by Sector (2023)*

High-Impact Context

- We cannot reach out goals alone
- 30% of GHG reductions must come from local action



Draft Strategies: Energy & Buildings

- **Residential Building Decarbonization.** Scale the Energy Smart Eastside program.

- **Building Performance Policy Evaluation.** Evaluate additional policies to electrify and improve efficiency for existing buildings.

- **Renewable Energy.** Support the transition to renewable energy.

- **Large Building Decarbonization Incentives.** Support decarbonization of commercial and multi-family buildings.

- **Green Building.** Facilitate green building construction.

- **Grid Capacity.** Partner with local utility and public partners to ensure a clean, resilient grid.



Draft Strategies: Mobility & Land Use

- **Mobility Options.** Support mobility options, first/last mile solutions, carshare programs, and active transportation modes.
- **Electric Vehicles.** Support a rapid transition to electric vehicles to reduce emissions when vehicle trips are taken.
- **Accessibility and Connectivity Funding.** Identify additional funding to support transit access and reliability, and complete bicycle and pedestrian networks.
- **Sustainable Land Use.** Support sustainable land use and development.



Draft Strategies: Climate Change

- **Community Resilience:** Enhance the Bellevue community's resilience to climate impacts.
- **Resilient Community Facilities:** Support community facilities and gathering spaces in preparing for climate impacts.
- **Air Quality.** Mitigate air pollution, particularly in sensitive use areas adjacent to freeways.



Draft Strategies: Institutionalizing Sustainability

- **Sustainability Funding.** Assess options and develop a recommendation for long-term funding for the implementation of the Sustainable Bellevue Plan.
- **Institutionalize Climate and Sustainability.** Continue to incorporate climate and environmental sustainability into City processes, plans, and decision-making, and organizational structure.
- **Equity.** Prioritize engagement and partnerships with underrepresented community members.



Draft Strategies: Waste & Materials

- **Waste Reduction.** Continue efforts to reduce, reuse, recycle, and compost.
- **Zero Waste Policy Evaluation.** Evaluate and implement policies that prioritize zero waste opportunities.



Draft Strategies: Natural Systems

- **Sustainable Tree Canopy and Open Spaces.** Prioritize sustainability and climate resilience in managing tree canopy and natural areas.
- **Electric Yardcare Equipment.** Assess options for transitioning to electric yardcare equipment.
- **Stormwater Management.** Enhance new and existing stormwater infrastructure with low-impact design.
- **Reduce Water Use.** Reduce communitywide per capita water use to enhance resilience to drought.



Next Steps

- **August:** Draft Plan Open Public comment
- **October:** Draft Plan for Council review
- **November:** Plan Adoption





Information

Tonight's Study Session is for information only. Staff will present progress towards implementing the 2021-2025 plan and provide an update on Phase II of the 2026-2030 Sustainable Bellevue Plan update, including draft strategies.