

Transportation Capital Investment Program (CIP) and Levy Update

Funding and Project Overview

Maher Welaye, Transportation Assistant Director
John Murphy, Senior Planner

June 11, 2024



Information

Tonight's presentation is for information only



Agenda

1. Capital Investment Program (CIP) Update
2. Neighborhood Safety, Connectivity and Congestion Levy Update
3. How we deliver projects



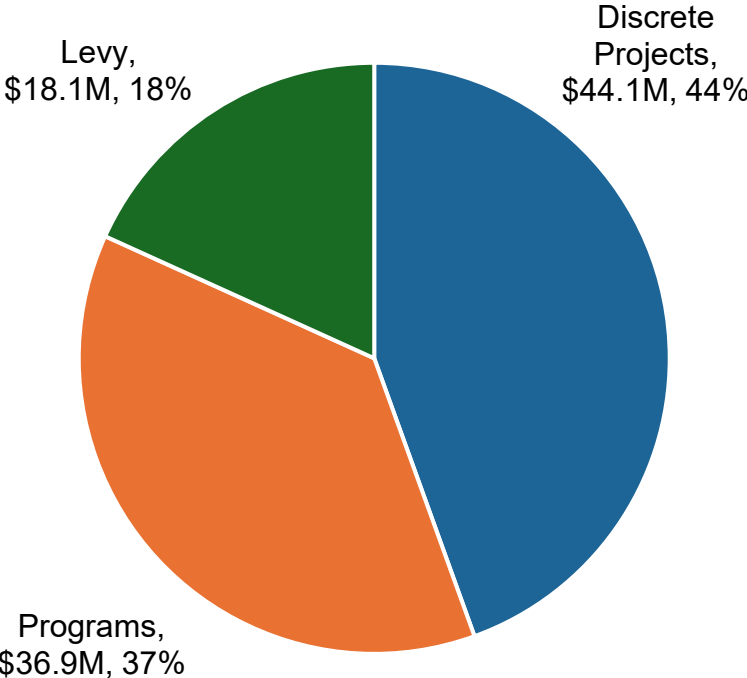
SECTION 1

Capital Investment Program (CIP) Update



CIP Funding Overview

Transportation Adopted CIP
2023-2024
\$99.1M



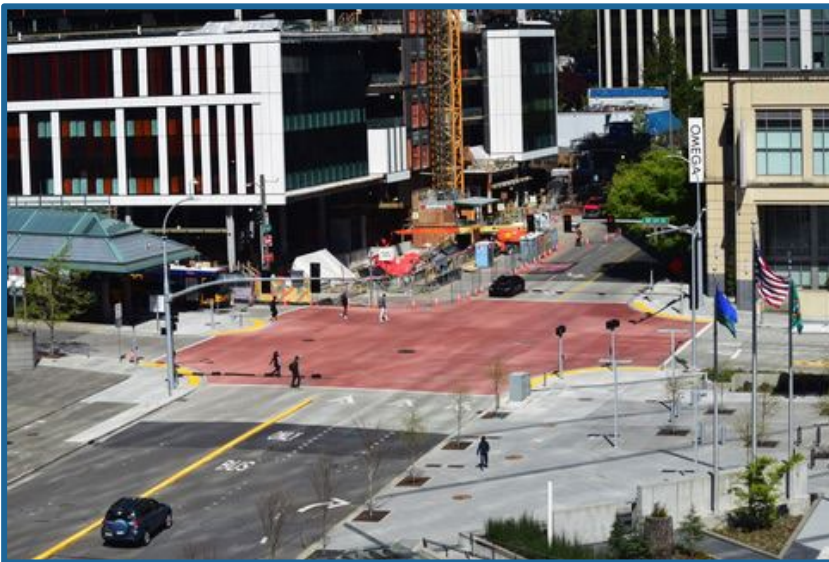
CIP Project Overview

- Recently completed projects
- Projects in construction in 2024
- Projects in design



● Recently completed projects

NE 6th Street Crosswalk



Mountains to Sound
Greenway Trail – Phase 2



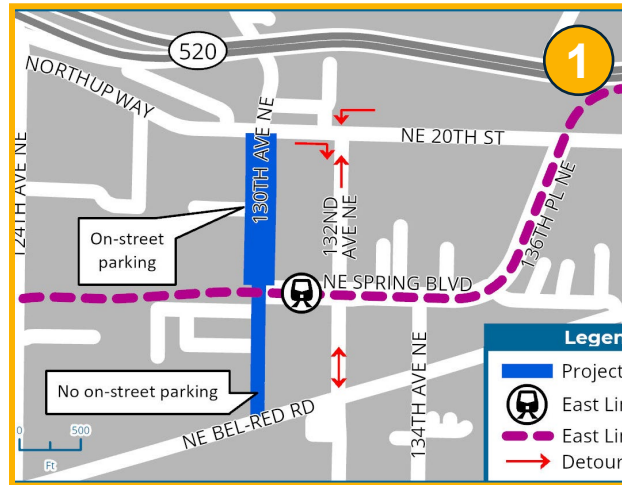
Recently completed projects

1. West Lake Sammamish Parkway Phase 2
2. 124th Ave NE - NE12th Street to Spring Blvd
3. Spring Blvd Zone 4 – 130th Ave NE to 132nd Ave NE
4. 130th Ave NE Park and Ride



Projects in construction

1. 130th Ave NE – BelRed Road to Northup Way
2. 124th Ave NE – Ichigo Way to Northup Way
3. 98th Ave SE and SE 11th St Slope Stabilization



● Projects in construction

2024 Overlay Program

- Includes 28 lane miles paved and 72 curb ramps
- Project locations in over ten neighborhoods



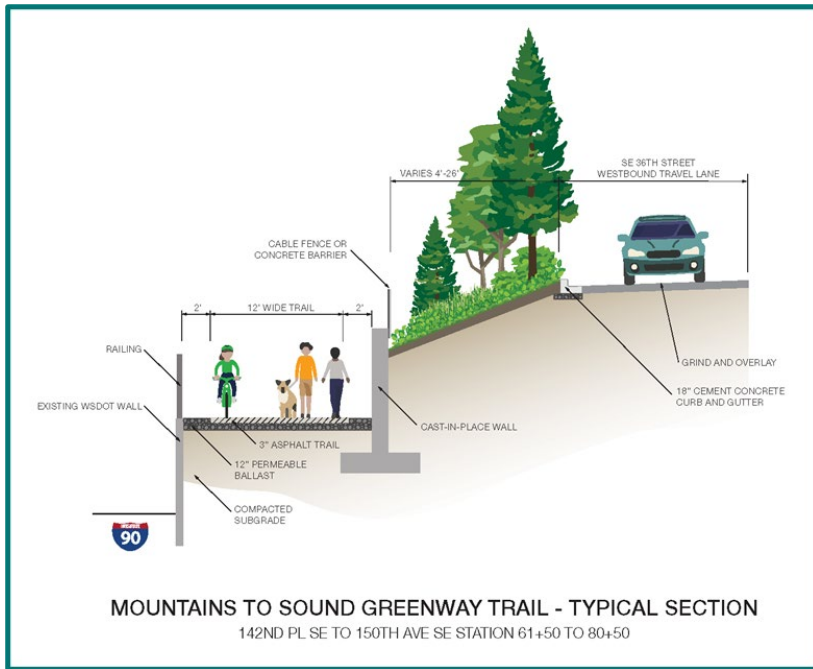
2024 Downtown Overlay

- Includes 16 lane miles paved
- Received \$7M in federal funding

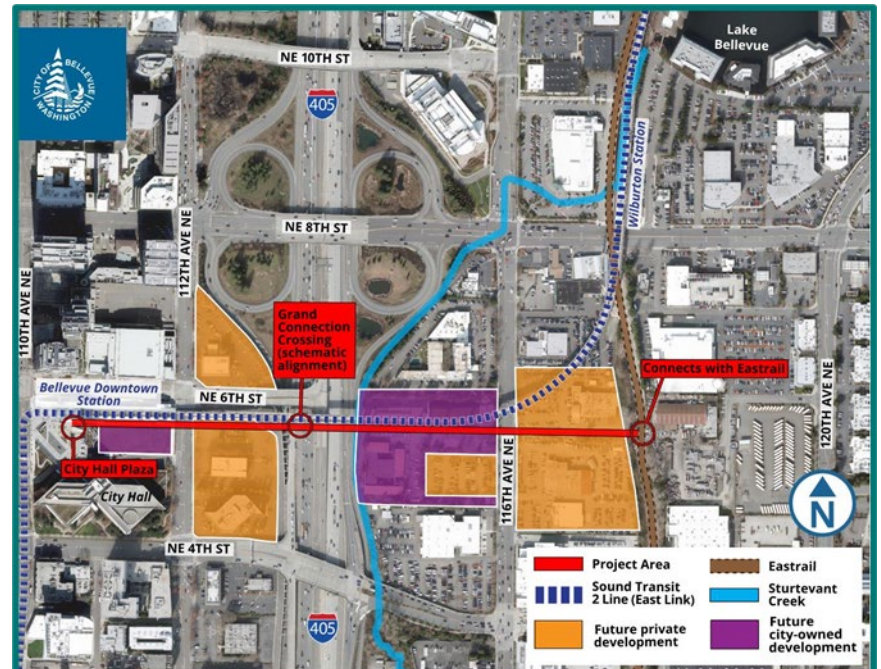


Projects in design

Mountains to Sound Greenway Trail Phase 3

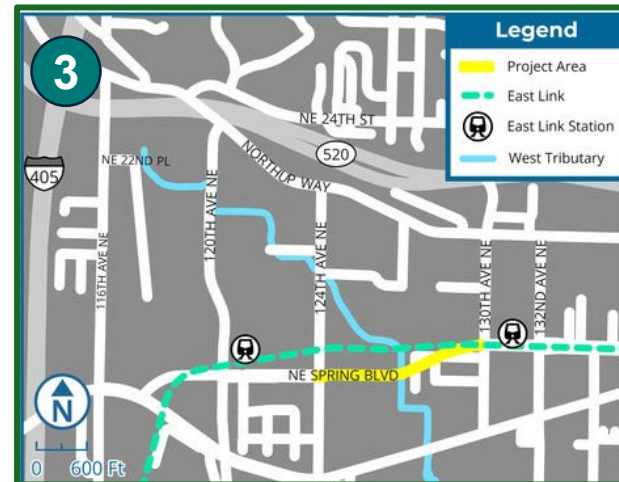
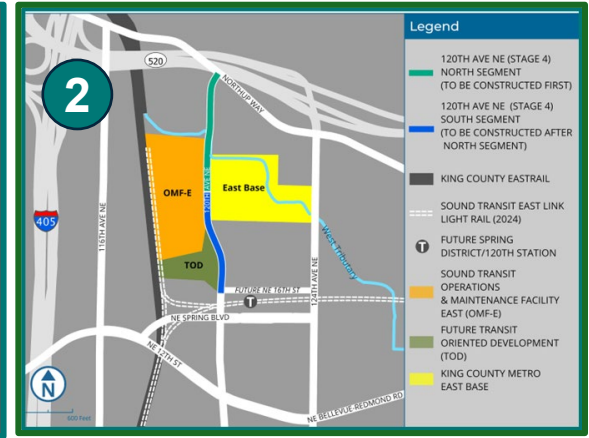


Bellevue Grand Connection: I-405 Crossing – Downtown to Eastrail



● Projects in design

1. Bellevue College Multimodal Connection
2. 120th Ave NE – Stage 4
3. Spring Blvd. Zone 3
4. Seismic retrofit for NE 12th Street bridges
5. 2025 Overlay



SECTION 2

Neighborhood Safety, Connectivity and Congestion Levy



Levy Background

- Voter-approved in 2016
- 20 year Levy
- Supports existing programs



Neighborhood Congestion Reduction \$2 million/year

Safety & Connectivity Projects ~\$8 million/year



Neighborhood Congestion Reduction

Sidewalk and Trail Maintenance

Safety and Traffic Management Technology

New Sidewalks, Trails and Paths

Neighborhood Safety

Bicycle Facilities

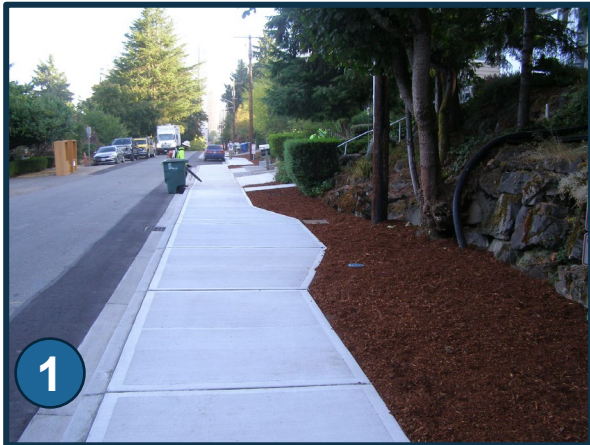


Levy Background

- More than \$34 million in investments
- 70 projects completed
- Projects in every Bellevue neighborhood
- Projects vary in scale (e.g. \$15K-\$4M+)
 - Often partner with other city funds/grants to increase impact
- Robust project pipeline



Recently completed projects



1. 105th Ave SE sidewalk

2. NE 24th St Slope Stabilization



3. Kamber Rd crosswalks

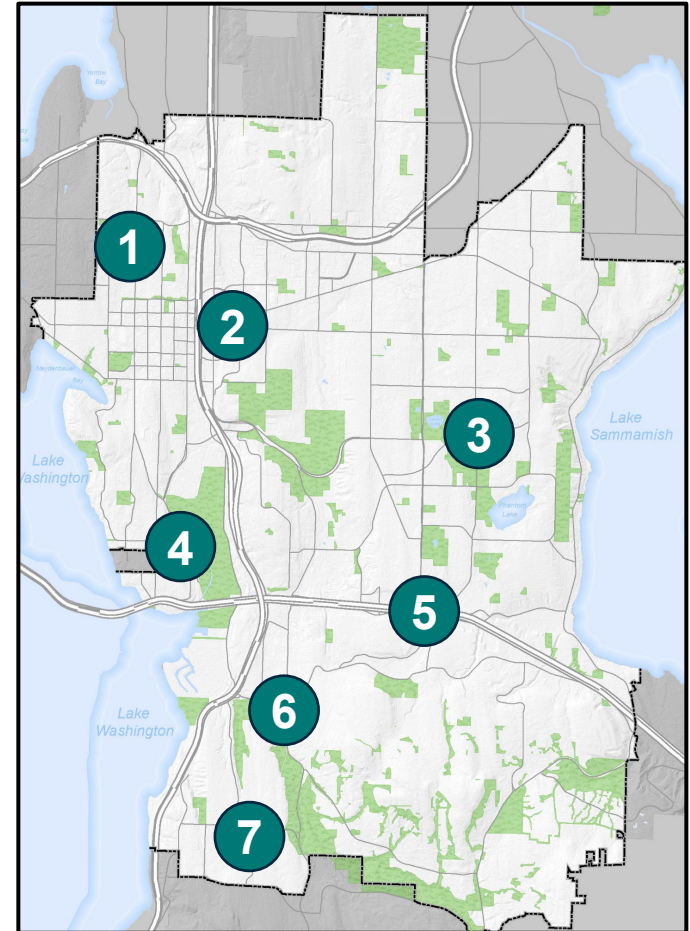
4. 112th Ave NE/NE 24th St traffic signal



Current project highlights

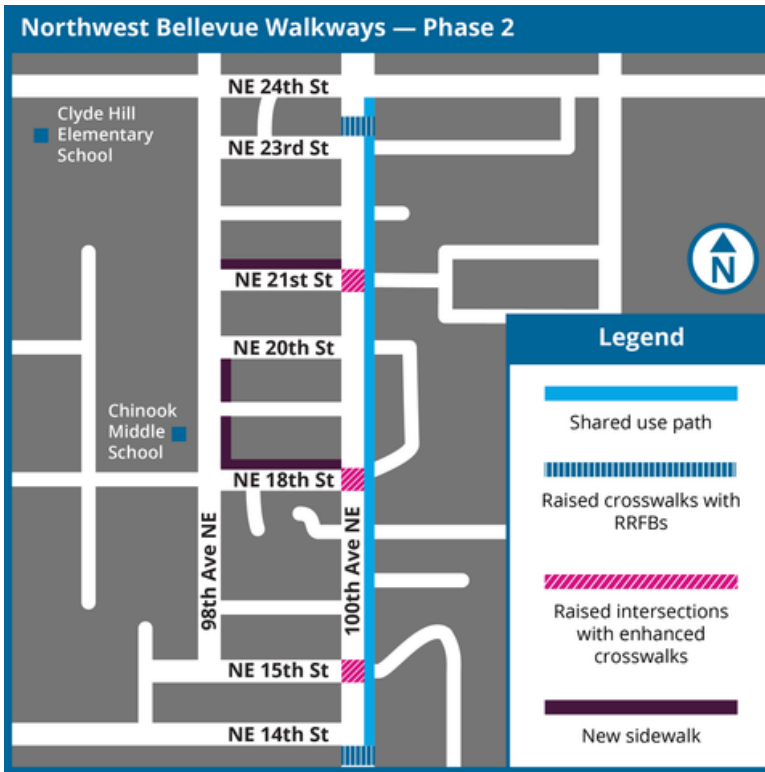
Construction planned for 2024/2025

1. NW Bellevue Walkways Project
2. NE 8th St over I-405 Crossing Improvements
3. 156th Ave NE/Lake Hills Blvd Signal
4. South Bellevue Station Neighborhood Improvements
5. 150th Ave SE Congestion Reduction
6. Coal Creek Rockery Replacement
7. 123rd Ave SE Sidewalk

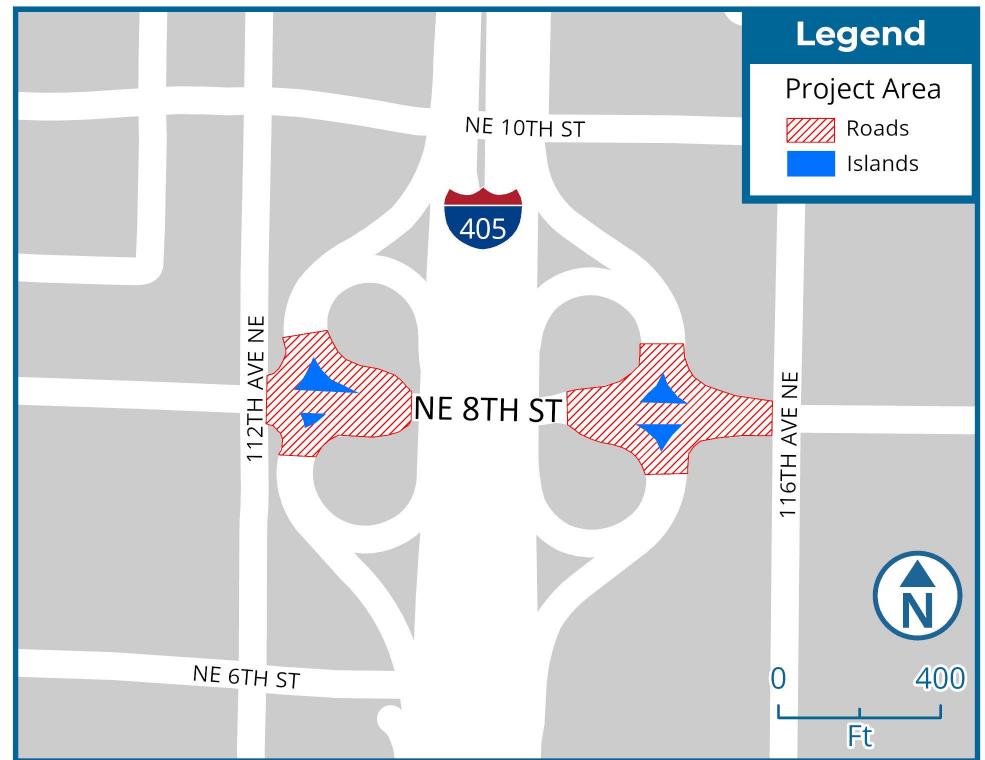


Current project highlights

NW Bellevue Walkways Project

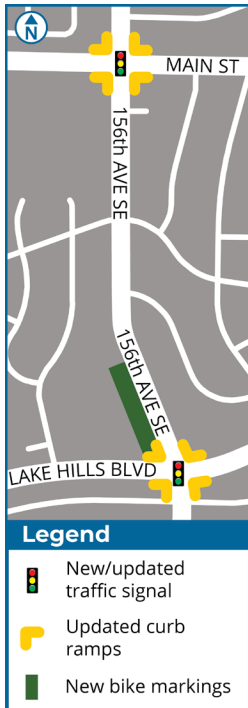


NE 8th St over I-405 Improvements



Current project highlights

156th Ave SE/Lake Hills Blvd Signal



South Bellevue Station Neighborhood Improvements

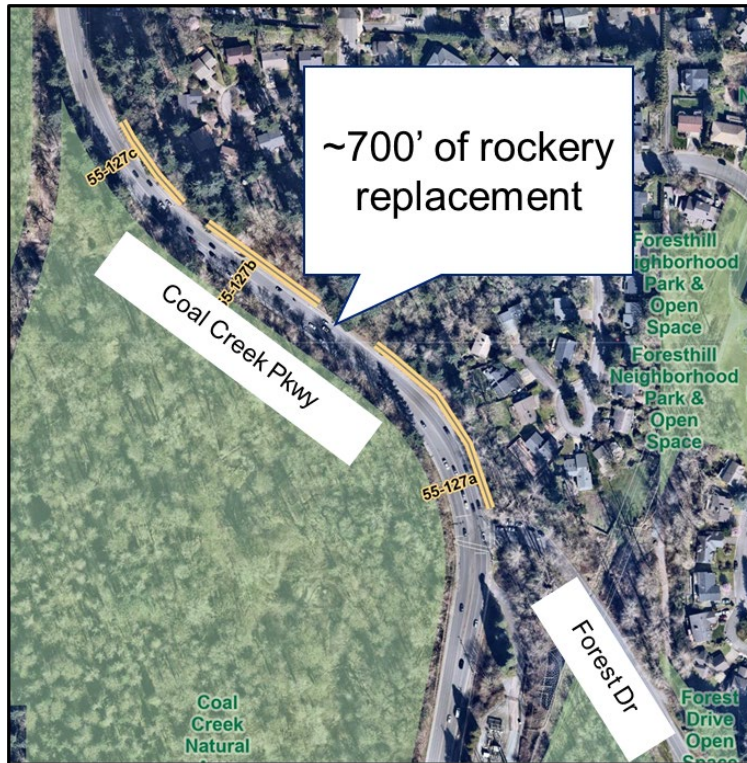


150th Ave SE Congestion Reduction

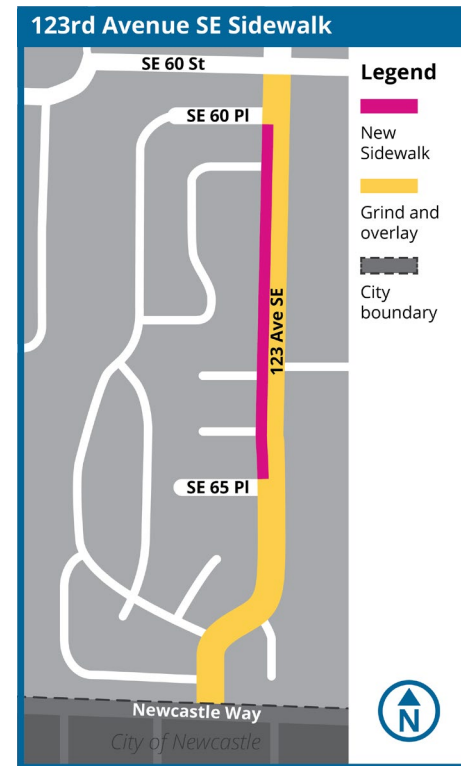


Current project highlights

Coal Creek Parkway Rockery Replacement

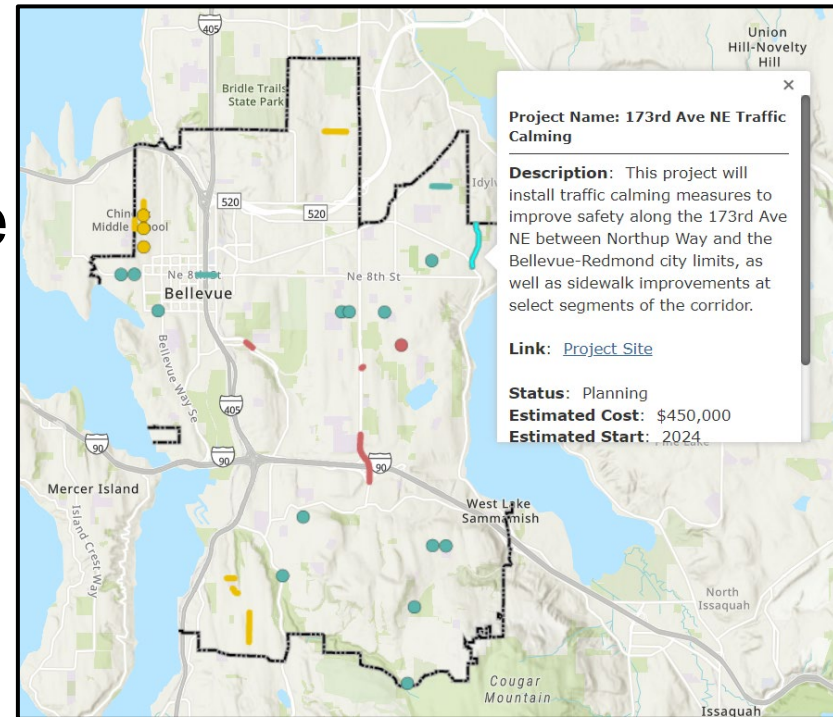


123rd Ave SE Sidewalk



On the horizon

- Levy update to community this fall
- Project continue to evolve in the pipeline
- Interactive project map refresh
- Continue to seek grants



www.bellevuewa.gov/TransportationLevy



SECTION 3

How we deliver projects



Project delivery factors



Staffing



Cost increases



Property acquisitions



Site complexity



124th Ave NE Ichigo Way – Northup Way



Public Engagement



Title VI Report

Survey

Project Update

Social media

Ribbon-cutting

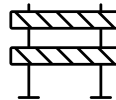
Design
0-30%

Design
30-60%

Design
60-90%

Construction

Project
Closeout



Engagement Plan

Open House

Construction
Mailer

Traffic Advisories



Diversity in procurement

Supplier Diversity Programs

Disadvantaged Business Enterprise (DBE)

Required for all federally-funded projects

DBE firms support projects both in design and construction. Transportation meets our 12-19% goals set by WSDOT.

Women & Minority Owned Business Enterprise (WMBE)

City-driven initiative

Transportation is working with FAM on implementing the new Procurement Diversity Inclusion Plan.



Workforce Development

- Transportation began following the city's new **Apprenticeship Utilization Program** requirements in February 2024.
- City established a minimum apprentice utilization requirement of 15 percent of total labor hours for public works projects over \$2 million.



10+ apprentices currently
working on the 2024
Overlay

Information

Tonight's presentation is for information only

