

# GREAT NEIGHBORHOODS



# Newport Engagement Report

PHASE 1 - DISCOVER



# Introduction

---

Bellevue is known for its diverse, vibrant, and welcoming neighborhoods. The high quality of life that community members enjoy isn't an accident; it's a result of careful planning done with the input the people who live, work, and play here.

The **Great Neighborhoods** program is the process for developing neighborhood area plans that reflect the community's values and vision for the future. These provide guidance to the city, developers, and community partners about how people want to see the neighborhood evolve in the future.

Neighborhood area plans are part of the city's Comprehensive Plan (Volume 2). They help address the changing needs of specific areas while staying aligned with the city's overall vision and policies (Volume 1).

## Project Scope

As part of the Great Neighborhoods program, City Council initiated updates to the neighborhood area plans for Crossroads and Newport in September 2024. This process will repeat in cycles until all sixteen neighborhood area plans have been updated.

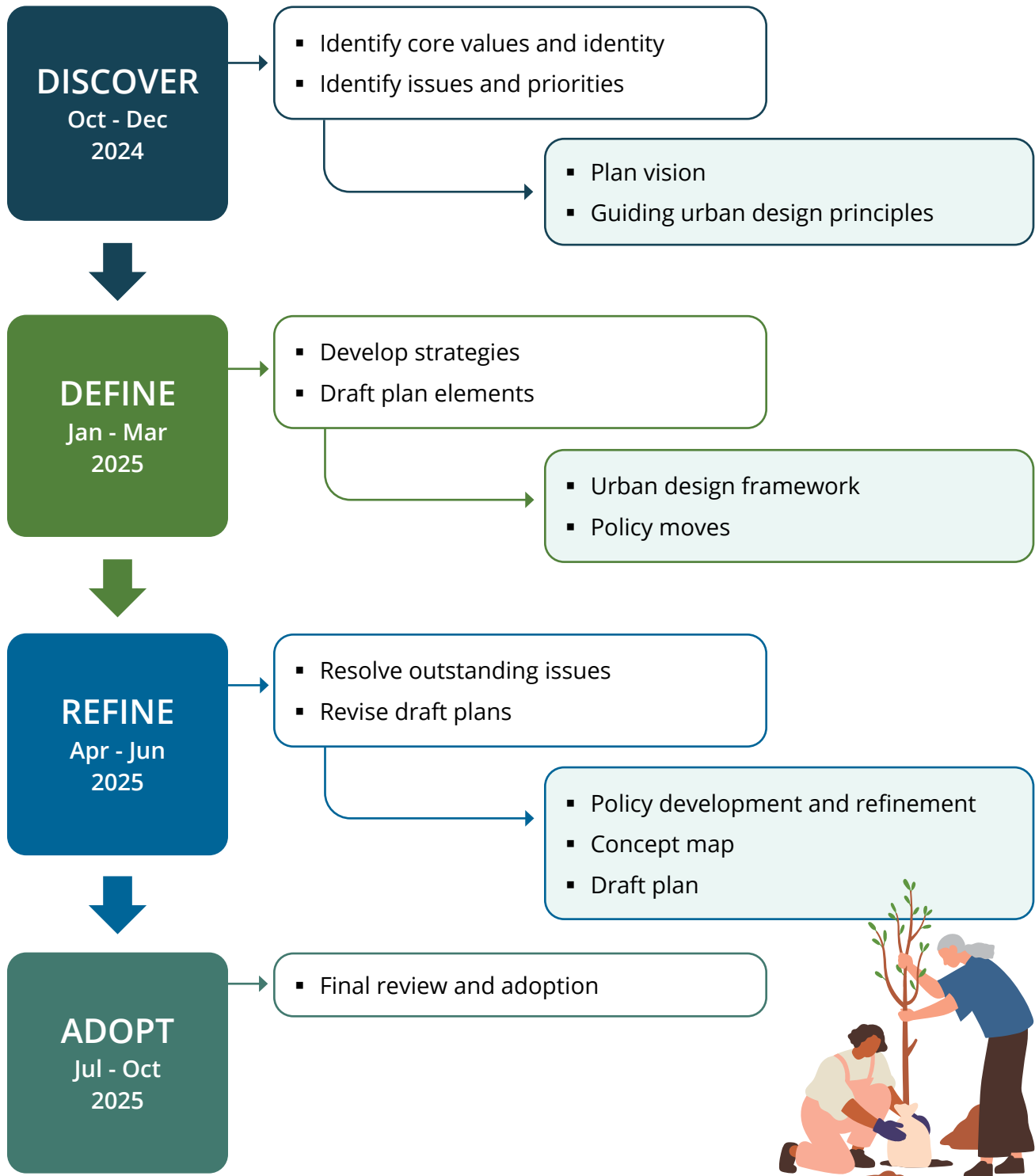
The goal is to adopt plans that are relevant to each neighborhood's unique identity, opportunities, and challenges. This planning effort seeks to enhance livability and is focused on the following topics:

- **Neighborhood Identity:** Define the unique aspects of each neighborhood and develop strategies to highlight them.
- **Enhanced Community Gathering Spaces:** Define and strengthen community hubs and "third places" that foster social interaction and connectivity.
- **Urban Design Framework:** Establish guidance on neighborhood design, focusing on opportunities to activate spaces and improve the look and feel of public spaces.
- **Neighborhood Connectivity:** Make it safe and convenient for people to get around their neighborhood, connect to transit and use other modes of transportation.
- **Public Realm Improvements:** Identify needs for potential future improvements, such as streets and trails, through community engagement.



# Project Timeline

The planning process is rooted in extensive community engagement that seeks to involve the many diverse voices that make up each neighborhood. The work is broken down into four phases with many opportunities for community members to provide input and review draft policy ideas.



# Overview of Outreach Activities & Participation

The Discover phase of neighborhood area planning began in October and went through December of 2024. As suggested by the name, engagement was focused on learning and discovery. Goals included setting expectations around the scope and timeline; understanding how the community sees itself; identifying neighborhood assets and opportunities for improving public spaces, gathering places, and neighborhood connectivity.

## Support for Equitable Engagement

Newport has seen some important changes over the past several years. The Asian population has grown and now makes up 34% of the neighborhood. Newport is also diverse in terms of age; 24% of households have school-aged children and 16% of residents are 65 or older. Newport residents are predominantly homeowners with renters making up 20% of the households.

Newport is home to an active community club as well as many homeowners' associations. These have been the primary avenue for connecting with community members. The planning team recognizes that there are opportunities to continue to improve outreach to diverse groups within Newport. The City will continue to make intentional efforts to connect with families, older adults, and people from diverse communities.



## Outreach activities during this phase included

- 1** Virtual Kickoff Event  
(combined with Crossroads)
- 13** meetings with neighborhood leaders
- 4** presentations to neighborhood groups
- 2** pop-up tabling opportunities at community events
- 1** Ideas Fair (in-person)

## During this phase the planning team connected with

- 176** people in-person at our community events, pop-up tabling, small-group meetings, and presentations.
- 289** people who responded to the mailed or online questionnaire.
- 326** visitors to our online engagement hub

## Demographics

Reporting on demographic information of participants can be challenging. There are some events, like a drop-in event, where the format doesn't allow for easy data collection. Additionally, demographic questions are always optional, and some people decline to share personal details.

The online questionnaire provided the most structured opportunity for collecting demographic data, which allows staff to understand how participation aligns with city-wide demographics. In general, there are significant gaps in participation from people of color, renters, and over-representation from older residents.

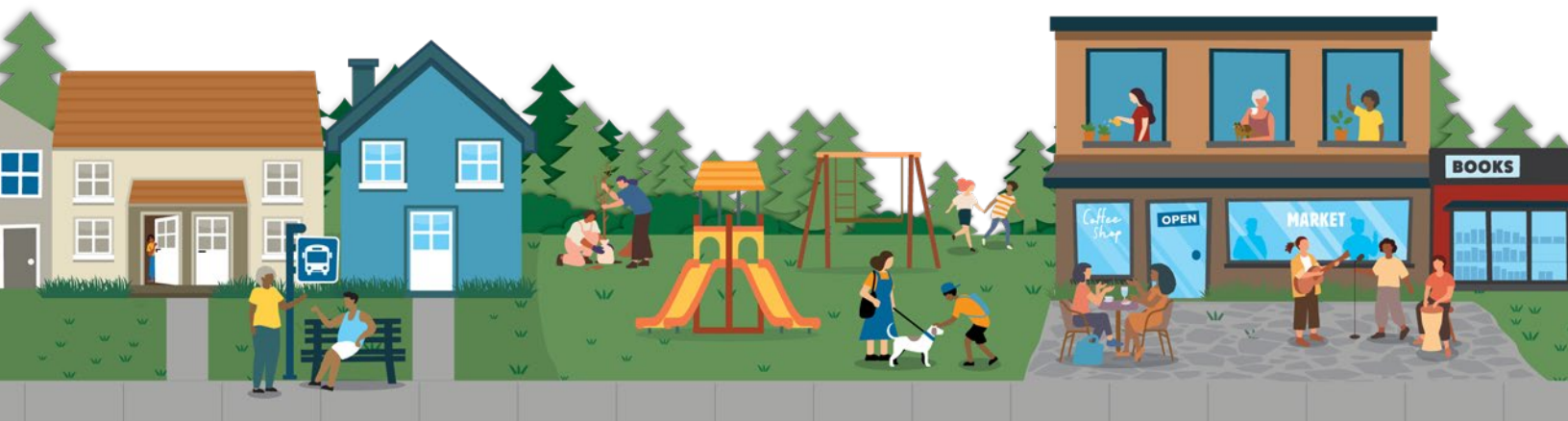
### People Ages 45+



### People of Color



### People who Rent





# Summary of Input

The primary purpose of the Discover phase is right in the name – it's a time for the planning team to learn how the community sees itself. What are shared values, ideas for the future, challenges that need to be addressed and opportunities to enhance livability. Questions and topic areas that framed the conversation included:

- What are the core values that should inform future development and changes?
- How can neighborhood connectivity be enhanced and make it easier for people to walk, bike, or take transit to destinations in their neighborhood and beyond?
- What are some of the places and spaces that people enjoy spending time in in the neighborhood?
- Where do people like to gather with friends and family in the neighborhood?
- What qualities do people want to see more of in public spaces in the neighborhood?
- What are specific challenges or opportunities that need to be addressed?

## Values & Vision

Understanding community values is a key part of the planning process. Values are an expression of what is most important to the community – what they take pride in and what they aspire to be. Values lead to a vision of what the community wants to achieve in the future. The values and vision also serve as a touchstone in the development of policies reminding planners what actions and outcomes the policies should support.

During both the Kickoff Event and Ideas Fair, participants were invited to share their value in a simple card sorting exercise. The planning team also use a Mad-Libs type exercise to invite people to apply those values to a sample Vision Statement. Participants also shared their values during small group discussions and meetings.

Community members in Newport value the community's **friendliness, safety, and convenience**. Community members especially appreciate the many trails and natural areas that give the neighborhood a sense of **beauty and quiet**. Changes in the neighborhood have put stress on some of these values. Participants would like to see more support for community gatherings and **social connection**. People also want to see more support for connectivity both in terms of **safer** options for walking and biking and addressing traffic congestion.

Newport Hills is known for its **low-key community**. We pride ourselves on being a neighborhood with **treasured green spaces** and a **fabulous location that is welcoming**. Working together we can be a more stronger community that enhances **community and opportunity** for future generations.

~ Participant  
Vision Statement



## Neighborhood Identity & Assets

Understanding how the neighborhood sees itself – what qualities make it unique – was a key question for this phase of engagement. The policies in the neighborhood area plan should strengthen and enhance things that make a neighborhood special and beloved by the people who live, work, and play there.

People were invited to share what they like and appreciate about their neighborhood during small group discussions, via exercises during the Ideas Fair, and questions on the mailed questionnaire.

**Peaceful, aging & neglected, and friendly** were the qualities that respondents to the mailed questionnaire brought up most when asked to describe Newport in three words. Newport is known for its **strong sense of community**. People who live there are very **engaged** [and] that contributes to its **small-town in a big city** feeling.

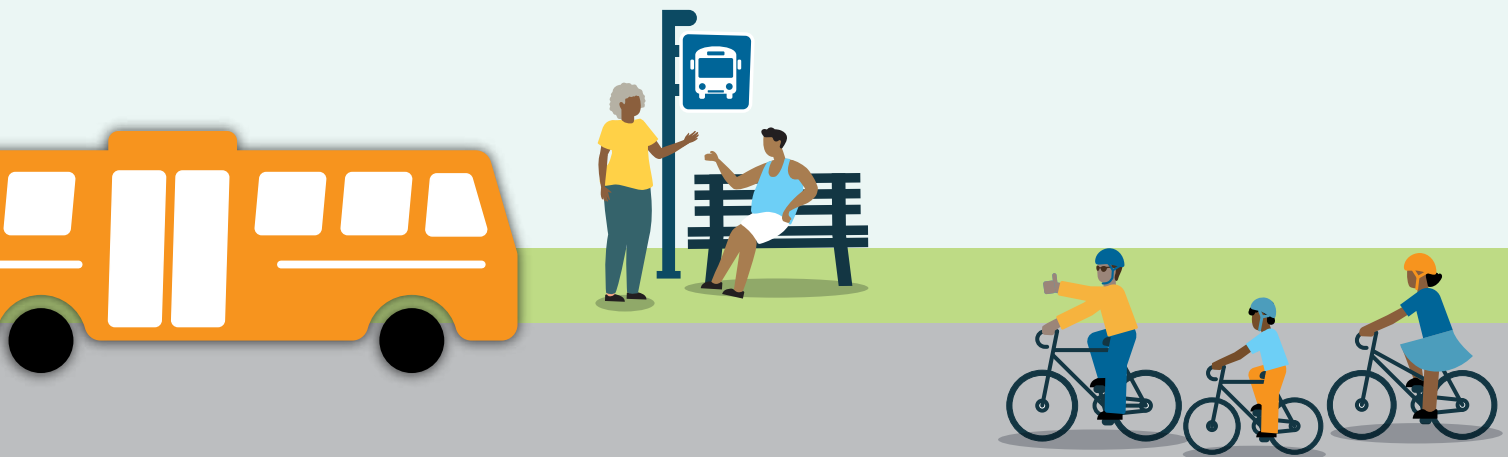
Newport has unique geography; there are several distinct sub-neighborhoods that don't always feel connected to each other. Each sub-neighborhood has different assets. People who live at the top of Newport Hill, mention specific local businesses as important places to gather and connect. Other residents rely on their HOA's clubhouse or go to places in Factoria or neighboring Newcastle to access specific amenities.

One of the most treasured assets in Newport are the trails and parks. Eastrail, the Pipeline Trail, the trails in the Coal Creek Natural Area, and Woodlawn Park provide access to nature, safe places to walk and bike, and meet with friends. These trails allow people to enjoy spaces that are “beautiful and nature rich...,” and as points of connection, “I value the Pipeline as a walking trail to Newcastle library and Safeway.”

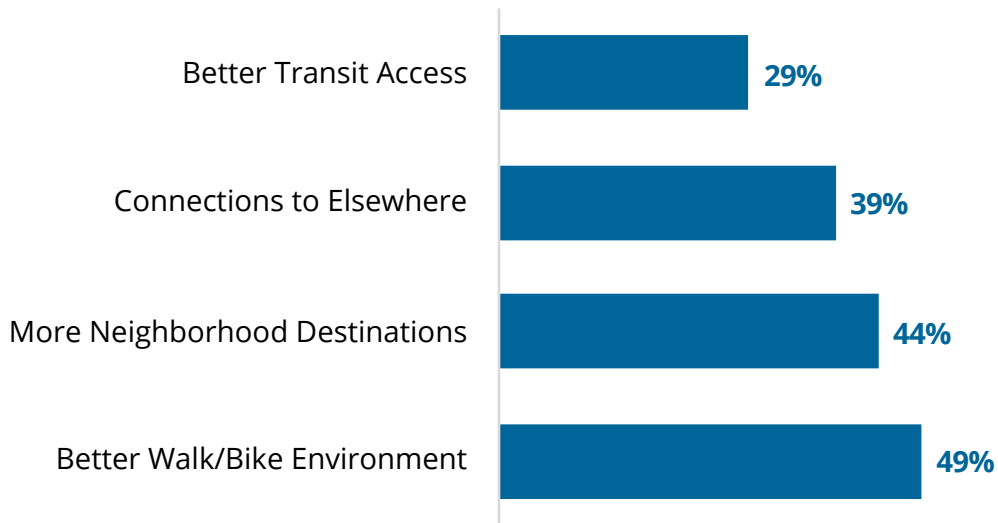
## Neighborhood Connectivity

Improving people's ability to walk, bike, and roll in the neighborhood is an important focus area for neighborhood area planning. The Great Neighborhoods project also seeks to look for opportunities to improve access to transit and connections within the neighborhood and to other destinations. Connectivity is an important issue for community members. People provided a lot of feedback related to walkability, pedestrian safety, options for biking, and access to neighborhood amenities.

When asked, “What would encourage you to walk, bike, roll, and/or use transit more?” community members indicated that a better walking and biking environment would be the most impactful. More destinations within the neighborhood and connections to other places were also important.



## Walkability cited as key to encouraging people to get around without cars



When asked about a path they value, people in Newport most often cited the **Pipeline/Waterline/Powerline Trail**. The community values it because it is safe for walking, protected from traffic and makes people feel close to nature. At the same time, it connects people to places they want to visit like the library and the Newcastle shopping center and other trails. Other commonly mentioned trails were **Eastrail**, primarily because it is a well-maintained place to bike and run with few road crossings; **Coal Creek Trails** because it feels like being in a forest. Many people mentioned neighborhood streets as paths they like to take walking or biking because they are close to home or because of the amenities of the street such as sidewalks or a bike lane. People living in **Newport Shores** mentioned the neighborhood streets, especially Cascade Key, as a pleasant place to walk because it is flat and the streets are quiet. **Bike lanes** were valued on 119th Ave SE and 116th Ave SE. Several people mentioned the **lack of sidewalks or intermittent sidewalks** on many streets as an impediment to walking. **119th Ave SE** was also valued for its connection to shopping, “a place to go”.

## Neighborhood Gathering Places

Having a variety of neighborhood gathering places and “third places,” like coffee shops or bookstores is an important part of livability. They help strengthen social connections between community members by providing opportunities for recreation, celebrations, pursuing hobbies, and connecting with friends.

The most commonly cited place that people value in Newport is the **Newport Hills Shopping Center** and the associated restaurants. People like it because it is central, ample parking and they see people they know there. The community values the restaurants because they have good food and a friendly atmosphere. However, many people also noted that the shopping center is run down and underused. Some store fronts have businesses that are rarely open. Some people wish for a coffee shop in the shopping center but instead visit the **Starbucks in Newcastle Commons** (SE 66th St. & Coal Creek Parkway) or the **Chevron gas station** on 119th Ave SE. Many people also mentioned the **Newport Hills Swim and Tennis Club** as a place they



value. Members value it because of the recreation opportunities, because it is close and because they run into people they know. Nonmembers appreciate that the facilities are available to rent by nonmembers. People also value outdoor gathering places. **Woodlawn Park and the associated dog park** has many new trails and the dog park is a place to meet other dog owners. Families mentioned **Newport Heights Elementary** as a gathering place they value because their kids go to school there and they are able to connect with other parents (kids and parents with kids in Newport High School felt the same). Other neighborhood residents appreciate the improved sidewalks out front and the availability of the outdoor campus after school.

Outside of the neighborhood, people mentioned valuing **Factoria Mall** for its diverse shopping opportunities and **Newcastle Town Center** for the library, grocery stores and other shopping.

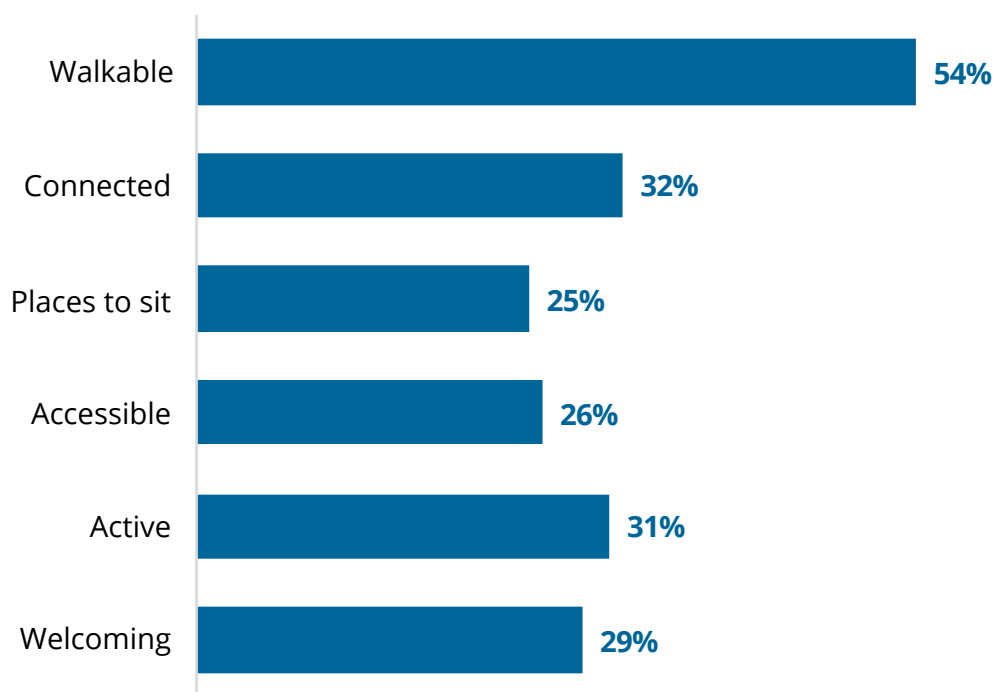
## Neighborhood Challenges & Opportunities

During the Discover phase the planning team sought to identify key challenges and opportunities. This information helped to identify both specific locations for urban design and public realm improvements and opportunities for creating policies that will support overall livability.

To begin with, the planning team invited people to share what overall qualities people wanted to see more of in the neighborhood. Through dot voting exercises and tabling events and in a question on the survey people could choose from a variety of attributes.

The top qualities people in Newport would like to see more of are:

### Residents want their communities to be more walkable



At the in-person Ideas Fair and during small group discussions and presentations, people also raised a number of concerns and ideas for improvement including:

- **Active transportation access** – There are many trails throughout the neighborhood but there is room for improvement in connecting them.
- **Community gathering spaces** – People said that the main community gathering places are privately owned and require a fee of some sort (membership or purchasing food) to visit. There is a strong desire to see some of the property owned by the school district put to a community use such as a community center.
- **Opportunities for new parks and open spaces** – There are many places to connect with nature in Newport but fewer places for organized recreation. People expressed desire for some more programmed spaces.
- **Pedestrian experience** – The primary thing people would like to see to improve the pedestrian experience is more sidewalks, especially on the arterials.
- **Wayfinding** – Newport connects to major and regional trail systems but it is not clear how to connect to these systems. More wayfinding to direct people into and through these systems would be welcome.

## How this input will be used

---

Unique elements contributing to the neighborhood's identity and top values identified by community members during the **Discover Phase** will inform the Neighborhood Vision drafted during the **Define Phase** of the planning process. Key challenges and opportunities identified by the community through our past engagement activities will inform priority policy areas that will be developed during the Define Phase. These policy areas, and eventually the actual policies, will be shared with the community for their review and further input.

Opportunities, challenges, and ideas from the **Discover Phase** will also be explored through the development of the urban design framework. The city will conduct pop-up neighborhood walks and workshops during the **Define Phase** of engagement to help community members evaluate public spaces within their neighborhood and document where new urban design opportunities may exist. This evaluation will supplement and provide context for the neighborhood area plans and will contribute to the refinement of policies in the two plans.



# Appendix

# Vision Statement Exercise Responses

---

1. **Newport Hills** is known for its **schools**. We pride ourselves on being a **cohesive** and **welcoming** neighborhood. Working together we can be a more **friendly** community that enhances **community** for future generations. -Anonymous
2. **Newport Hills** is known for its **neighborhoodiness**. We pride ourselves on being a **diverse** and **participative** neighborhood. Working together we can be a more **connected** community that enhances **our happiness** for future generations. -Anonymous
3. **Newport Hills** is known for its **history and community**. We pride ourselves on being a **diverse** neighborhood. Working together we can be a more **vibrant** community that enhances **living communities** for future generations. -Anonymous
4. **Newport Shores** is known for its **chemicals from lawns running into Coal Creek and Lake Washington**. Working together we can be a more **neighbor-friendly** community that enhances **quietness and neighbor friendly lighting** for future generations. - Deneil C
5. **Newport Hills** is known for its **low-key community**. We pride ourselves on being a neighborhood with **treasured green spaces** and **a fabulous location that is welcoming**. Working together we can be a more **stronger** community that enhances **community and opportunity** for future generations.- Cheryl N
6. **Lake Heights** is known for its **beauty**. We pride ourselves on being a **walkable** and **friendly** neighborhood. Working together we can be a more **cohesive** community that enhances **family growth** for future generations. -Anonymous
7. **Lake Heights** is known for its **friendliness**. We pride ourselves on being a **welcoming** and **connected** neighborhood. Working together we can be a more **inclusive** community that enhances **all peoples and cultures** for future generations. -Anonymous
8. **Newport Hills** is known for its **convenience**. We pride ourselves on being a **sustainable** and **culturally diverse** neighborhood. Working together we can be a more **walkable/ bikeable** community that enhances **livability** for future generations. -Anonymous
9. **Newport Hills** is known for its **walkability**. We pride ourselves on being a **quiet** and **convenient** neighborhood. Working together we can be a more **connected** community that enhances **friendship** for future generations.- Steve K
10. **Newport Hills** is known for its **walkability**. We pride ourselves on being a **quiet** and **convenient** neighborhood. Working together we can be a more **connected** community that enhances **friendship** for future generations. -Anonymous
11. **Newport Hills** is known for its **central location**. We pride ourselves on being a family community and a **caring/friendly** neighborhood. Working together we can be a more **stronger** community that enhances **bonds** for future generations. -Dan N
12. **Newport Hills** is known for its **community**. We pride ourselves on being a **welcoming** and **friendly** neighborhood. Working together we can be a more **supportive** community that enhances **all the things** for future generations. -Anonymous

# Newport Survey Responses

A street or pathway I enjoy using in this neighborhood is:	An important place for me to gather with others in my neighborhood is:	Is there anything else you'd like to share about your neighborhood?	Name
Eastrail. Safe from cars, good for biking or walking.		Our neighborhood is isolated geographically so difficult to connect to other areas of Newport especially during the I-405 construction projects. We have a very dark neighborhood at night due to minimal street lighting and that along with narrow sidewalks make walking at night difficult/unsafe	Sue B
	Resonate. Local place where you can take your family.	The neighborhood used to be family friendly and welcoming. Pride of ownership. It is now an area of neglect and property (retail) owners not caring about how our neighborhood looks or the impression that it's a place we are proud of.	
Loops trail that goes from neighborhood to Coal Creek. Many of us enjoy getting back out into the woods.	Swim and Tennis Club. It's centered.	Shopping center is embarrassing. It's old, falling apart has weeds, landscaping is abysmal. It looks like the poorer part of Burien and owners do not care. Former bank bldg is in bad shape. Some homeowners have let their houses fall apart. We need sidewalks, we need fewer rentals! Most owners live outside of country. Stop that church from renting out a place to park fun buses. We feel like a 2nd class neighbor in Bellevue.	S. M
South of me that has sidewalks. The power line road is kept cleared so you feel safer and have space to walk or bike.	Would be, if we had a library and a coffee shop. Like Top Pot downtown Bellevue or like Wood's Coffee in Bellevue Square. Large enough to have seating for several groups of people. With good coffee not Starbucks. "Top Pot is locally owned".	We could use a drug store, grocery, and USPS. Included in the design of the business area, large sidewalks are more inviting without large pots or obstructions for walkers. Use space wisely by providing parking on a 2 or 3 level open parking area. Small play area with picnic tables and outdoor art	Claire B



A street or pathway I enjoy using in this neighborhood is:	An important place for me to gather with others in my neighborhood is:	Is there anything else you'd like to share about your neighborhood?	Name
The park with the dogs and people. It's what shows people in a healthy element and people seem more happy outside.	Grocery store. That's where I have seen so many people I really know or not know so well, and run into.	Back when the pharmacy and drugstore and the pizza and the movie place and Albertson. The neighborhood was good. The Mustard Seed was there too. Do like that we have some good eating place up here.	Julie D
Pipeline to Lake Boren. Easy to access.	Resonate Brewery. Nice family place, modern.	Resident since 1990. Would love to see the Newport Hills shopping district revitalized; many unused empty buildings	Carolyn H
The new bike path connected from the railroad. Recreational and provides alternative transportation via bike.		Getting in and out of the neighborhood is very time consuming due to the traffic on 118th Ave SE. The root of the problem is the Coal Creek interchange of I405. This issue is the reason that I am considering moving	
Olympic pipeline trail. Long trail allows access to parks and other trails.	Lake Boren Park. Large, comfortable, attractive.	Olympic pipeline trail needs better grading and drainage. Currently, it develops many large puddles after a rain.	
The Powerline trail. Friendly and kept trimmed. Dog friendly.	Resonate restaurant. One of the few restaurants that are family friendly.	With the addition of housing east of Coal Creek our street has become a cut-through from Coal Creek Parkway to Newcastle Way. It is more dangerous to live on NE 66th to 128th Ave SE	
The Pipeline.		Where are the police? Cars and car parts get stolen, packages get stolen. Cars speed, police presence once, twice, three times a day may do wonders	
Sidewalks around our neighborhood. Keeps us safe from speeding vehicles.	Parks around our neighborhood. Feels safe.	Lots of speeding vehicles. Would like to see more tickets issued and enforced speed limits. We also had our mailboxes broken into a few times. We do have locked mailboxes.	Randall D
		Why no bus route on 110th?	
Sidewalks - even though very bumpy. Trail south on 405 too noisy!	N/A. Clubhouse was, no longer belong.	We have been very negatively affected by 405 expansion. More noise, more crime from trail -- as access to neighborhood backyards is more open	Pam

A street or pathway I enjoy using in this neighborhood is:	An important place for me to gather with others in my neighborhood is:	Is there anything else you'd like to share about your neighborhood?	Name
125th, 123rd, 128th Ave SE. Each of them figures prominently in my daily 3.5 mile walk.	Resonate. Great beer, ale, and pizza.	Too much foreign ownership of homes, which leads to too many renters, which leads to unkempt yards and over-abundance of vehicles on streets. Therefore, unenforcement of both parking and code violations needs to be corrected	Brian S
Powerline trail. Closer to nature, quiet.	Newport Hills shopping center. Local businesses, not crowded.	Please put speed bumps on 123rd Ave SE. People are racing there in the evening! Put a trash can for the bus stop at 123d Ave SE. People are throwing their trash on the street. Put in a roof and bench, and add more light. Add more light to 123rd Ave SE and SE 60th Pl. Add gym and covered swimming pool.	Anton K
116th Ave SE. No speed bumps.	Shopping center restaurants		
Sidewalks. Some streets don't have one on either side. Sidewalks are safer.	Retail restaurants, coffee shops, taverns. These are useable everyday rain or shine.	The Newport Hills shopping district is badly in need of renewal, major renovation. NIMBY's have obstructed the owners investment with fears, exaggeration, and loud complaining. Build a new community center there.	Bob M
Coal Creek Trail Pipeline.	Newport Swim and Tennis Club. Recreation and community meetings.	I don't favor rezoning for high-rise housing. Road access to our neighborhood is often over-crowded with frequent backups. I'm ok with some residential development to encourage local businesses, but not high-density.	Don W
Powerline. Quiet, safe, no cars, no gas fumes, dog friendly & people too.	The walking trails, e.g. Powerline, Old Ringdall Track. These trails are flat and safe and entertaining.	My neighborhood is rich in diversity. We've lived in this neighborhood (2 houses) for the past 50 years. Very accessible location and great schools have kept us here and raised our family.	Jean W
Cascade Key. Very walkable.	Clubhouse. Sense of community.	Need better street lights. Need safe bike path at entrance along 110th. Need to complete Eastrail.	

A street or pathway I enjoy using in this neighborhood is:	An important place for me to gather with others in my neighborhood is:	Is there anything else you'd like to share about your neighborhood?	Name
116th St. It works well for my dog walks and connects to Woodlawn Park and the dog park.	Woodlawn Park. I enjoy the dog park and the people there.	We need sidewalks on 116th St and surrounding streets. The street between 116h and 119th (Lake Heights St / SE 45th St) is dark with no sidewalks and limited visibility around curves, making it dangerous for pedestrians and drivers	Jules K
Pipeline Trail. I walk this trail every day with my dog. It is very neighborly.	Resonate Brewery and Terry's Kitchen. Good food, drinks, and friendly atmosphere.	I like there is an Asian grocery -- smart in Newport Hills	
Newport Hills pool or shopping center. It would be nice to have a neighborhood coffee shop, but that's ok, we have "downtown Newcastle".			
121st Place SE. I live on 121st Pl SE.	Cloud 9. Great burgers and food.	It has been a great place to raise our children	Steve M
125th Ave SE, to various walking loops on streets. I can walk safely after morning traffic and before evening traffic.	Restaurants @ Newport Hills shopping center. I often walk to meetings.	Needs more sidewalks and bridging over traffic to area parklands. Not safe to leave vehicles at parks during the week	Frank K
None! Full of high speed vehicles! No preventative police patrols.	None. Unsafe conditions.	It has a high crime rate, no police proactive patrols and lots of speed violations.	
Kingdale Middle School Football Field. For walking and biking.	Parks, restaurants. I enjoy nature and food.	Newport is an older neighborhood that needs more updating to its shopping centers, roads, sidewalks, and hiking trails	Diane

A street or pathway I enjoy using in this neighborhood is:	An important place for me to gather with others in my neighborhood is:	Is there anything else you'd like to share about your neighborhood?	Name
123rd Ave. We live there, it feels safe, sidewalks are present, people are friendly.	Our homes. It would be nice to have more parks, restaurants, community centers to utilize.	We have a child in school, it would be nice for our Bellevue-addressed property to be zoned in Bellevue School District. Our neighborhood is located in an excellent location for access to Seattle and Bellevue 90/405 corridor. Though privately owned, a re-development of Newport Hills Shopping Center would be nice, the current businesses located there are great, but the area is dated. A refresh with retail, commercial, etc. would be nice. Newcastle has strip malls and doesn't have a family oriented feel. Personal request, speed bumps on 123rd	Jon G
Sidewalks. Not dangerous and better to stay off the streets.		Homeowners yards are a mess. Not too many that keep their yards nice. It's not appealing to walk in the neighborhood with messy yards. Trashy looking.	
The walking trail. We do daily walks there.	Mustard Seed restaurant We can watch sports together. The Swim and Tennis club could be a good place, but it is too expensive for us.	We attended last year's club meeting. Registered and paid a fee. But we have never heard from the club in any forms or communications. Hope it can be improved.	Kan L
Lake Washington trail. I like to run on Eastrail.	Newport Hills Swim and Tennis Club. Summer time fun with friends from the neighborhood and school.	Need more crosswalks for safety of children walking. More spaces for youth to gather. Doesn't feel very connected. Split school districts make it hard.	Linda H
SE 60th bike lane. It takes me to the bike path along Lake Washington.	Park. We also need a coffee shop.	I love that it is flat and I can walk to restaurants and snacks. I would like more of this.	Barbara B
Gas Pipeline. It is open and safe to walk on.	There really isn't a place close to us to gather	The road off Coal Creek (66th, 67th, 128st) cut through gets a lot of traffic that speeds. We need speed bumps to slow cars down to make it safer to walk and drive in our neighborhood.	Gerri R

A street or pathway I enjoy using in this neighborhood is:	An important place for me to gather with others in my neighborhood is:	Is there anything else you'd like to share about your neighborhood?	Name
The Pipeline. There is no traffic and you feel like you're walking in the country.	The Mustard Seed. It's really about the only place we can gather.	Cars cut thru Newport Hills from Coal Creek to 405 and back. More traffic police, round abouts, speed bumps on 60th.	
Eastrail. Proximity.	Would be nice to have a senior acuity center Bellevue Senior Cent is miles and a traffic heavy drive away. Never go there because of that.	Senior forgotten by planner	Patricia B
	Lake Boren. Walkable, beautiful, quaint.		
They are not crowded.	Newport Hills because it is easy to get to		Jim M
Walking safely; more sidewalks and benches to rest. Needed for the seniors in the area.	Library. quiet and welcoming.	Self-contained. Would love to see a child's play area that could be used by all	Patty G
The Eastrail between exit 9 and exit 6. It's a great place to walk/run/get fresh air.	Newcastle Beach Park. Good for groups.	Since the Eastrail was finished, the security in our neighborhood has decreased -- more car looting, package theft, etc.	
The Pipeline trail and connected hiking trails. It helps connect me to nature right out my front door.	The Newport Hills Swim and Tennis Club. It's a fun and safe place for our family.	Cars drive too fast on the main streets. I would love to see "bump outs" that provide more landscaping, trees, etc.; but also purposely flow down traffic. Also, more sidewalks and underground powerlines, please!	Laura M
	Resonate Good food, service, and weekly events like trivia. Place to gather after work.		
Newport Hills Woodlawn Park. Easy to walk and use.		Newport Hills shopping center needs upgrade to friendly spots and housing. Better businesses	Walter M
The Pipeline trail. No cars and it goes right to the stores.	My cul de sac. I love my neighbors.	Wish the shopping center parking lots looked better	



A street or pathway I enjoy using in this neighborhood is:	An important place for me to gather with others in my neighborhood is:	Is there anything else you'd like to share about your neighborhood?	Name
We walk neighborhood streets frequently. They are nearby and have little traffic. For variety we walk Eastlink trail on weekdays and avoid bicycles on weekends.	We have no public gathering places. The shopping center is a mess.	In tremendous need of shopping center upgrade to provide places for public gathering and commerce. Parks are great already	Susan and Jerry P
Lake Heights Boulevard. Interesting terrain, some views, variety of houses, interesting landscaping.	Resonate pizza and bar. convenient.	We live on 119th Ave SE, a busy arterial. Keeping heavy traffic (large trucks, dump trucks, cement trucks, semi trailers) to a minimum would improve our quality of life	
The Pipeline walk to Coal Creek Shopping Center. Totally safe -- no traffic.	The Mustard Seed restaurant. Central location and familiar to Newport Hills residents -- friendly.	I think it's paradise and I am thankful we bought a house here in 1967.	Karen Y
Sidewalks! Lights! safety.		We support updating the shopping but do not support affordable (low-income housing). Traffic is horrible getting off the hill already. People cutting over is out of control driving way too fast also	
The forest trails in Coal Creek drainage. Beautiful and nature rich. I bicycle the neighborhoods at non rush-hour times. I value the Pipeline as a walking trail to Newcastle library and Safeway.	Dog park Dogs can happily be ranging while visiting!	The "shopping district" is a bit depressing and down-market, though the businesses are probably vital and ok. I appreciate the Asian market Smart and hope it remains viable. The ghostly unfinished housing development (Cambridge Manor Townhomes) across Coal Creek Parkway from Newport High School is a problem	Holly H
Pipeline trail in Newport Hills. A nice walk in nature without having to deal with road traffic.		Would like to have sidewalks along 116th. Cars fly down that street which makes it incredibly dangerous for walking. Only a narrow shoulder for walking.	

A street or pathway I enjoy using in this neighborhood is:	An important place for me to gather with others in my neighborhood is:	Is there anything else you'd like to share about your neighborhood?	Name
Coal Creek trail. Nature, trees, creek.	Newport Heights Elementary, Newport Hills park, Newport Hills shopping village	Keep neighborhood quiet, safe, close to nature. Less constructions. Newport new townhomes at the cross of Coal Creek and Factoria Way is taking space away from Coal Creek trails.	
Side streets. less traffic, quieter.		We don't need multi-story apartments	
The strip mall on 56th and 119th. I go to these stores several times a week. This walkable lifestyle is very important. I would be devastated if they knocked down that strip mall. Please do not overload housing while lowering amounts of shops.	The Mustard Seed It's an old school super fun dive bar and restaurant. I love it. I go to Resonate often, too.	I chose my home because it is close to restaurants, bars, and shops (grocery, dry clean, etc.) I like the unique planning neighborhood feel, and I would move if it changed. I also love the pool (I'm a member). Love the location relative to my home and getting to Seattle. I want more trees as well. Plant more and never chop any more down!	Julie T
Pipeline. Easy of walking and safe.	Starbucks	It has nothing in common with Newport Shore and Greenwich. Joining us together would change community unity and spirit and support. City of Bellevue needs to replace the Del Mar Woods sign. Redoing the corner caused problems. It would make our neighborhood look more inviting.	Roxanne M
Pipeline. No traffic -- 128h and 129th North of 60th is narrow for traffic control are useless.		Shopping center is deplorable. The few businesses are trying to survive, but obviously have none or little support	

A street or pathway I enjoy using in this neighborhood is:	An important place for me to gather with others in my neighborhood is:	Is there anything else you'd like to share about your neighborhood?	Name
The trail, "Pipeline trail" that connected 123rd to the Newcastle library and Lake Boren Park. It's both a park free of cars and a convenient connection to a core area with library, shopping center and restaurants. It feels like a nature walk and great for a run.	Newport Hills park. It's where kids can enjoy watching others play sports, play and meet playmates.	It's important to consider the traffic and road capacity as the city considers density expansion. 60th and 119th are bottlenecks already when there is an issue on I-405 or Coal Creek -- giving a glimpse into how little extra road capacity we have to main roadways. Mixed use local development that wouldn't require getting into a car to go outside the neighborhood is the dream	Elena R
Greenbelt. no traffic.		Speed limit 25mph on the 9 blocks of 123rd Ave SE between 60th and Newcastle Way consistently ignored. There are metro and school bus stops, dangerous on blocks that have no streetlights. 2 Metro bus stops here have only a patch of blackberries to stand in and on other side only bushes or someone's driveway (no sidewalks, so riders have to stand in street)	
Newly completed rail-to-trail conversion south along 405 Coal Creek/Newcastle. Safe, wide enough to accommodate walking, biking, running, strollers, etc.	NYC pool Unique setting, all neighbors welcome, easy socializing. Please allow this site to continue with maintenance for years to come!		
I am one of the oldest persons that have been here for years and things have changed. There is very little neighboring.	Many other cultures do not neighbor and they are becoming the majority. I am from Lake Heights.	Very much need an overhaul of the shopping center.	Kaye B
The Pipeline. You feel like you're not in an urban environment.	Newport Hills shopping center. Centered location.	Please assist us with COB funds to revitalize the "Delmar Woods" entry sign @ Coal Creek entrance. Similar to those for Newport Hills and Lake Hills neighborhoods	

A street or pathway I enjoy using in this neighborhood is:	An important place for me to gather with others in my neighborhood is:	Is there anything else you'd like to share about your neighborhood?	Name
Pipeline trail. It's safe from automobile traffic, nice people also use it, safe for pets, some natural spots.	our homes. they are warm and more intimate.	I would like to see more safe places for children to meet and play. I would like to have Newport Hills be more senior concerned, helping them stay safely in their homes and kept able to maintain their properties	
Walk around the block. safe.		Born and raised in Bellevue	
The Pipeline road. It gets me away from cars and closer to nature.	Newport Heights elementary school. Good place to recreate and get some exercise.	The closed schools look neglected. It would be nice if they were better maintained.	
Powerline. no car, rarely any bikes.	Newport Hills Swim and Tennis club. Many of our friends are members.	No zoning change on the Newport Hills shopping center	
SE 60th St. I can go to either of 2 parks.	Newport Swim and Tennis club. It is diverse, and fun! Club might be aided by more timely response to permits and such requested of the city.	In my opinion, 119th Ave SE between SE 58th and SE 68th, has too many places where cars can exit from parking lots. Makes walking and driving feel somewhat chaotic. Speeding SE 60th level the hill??	
Waterline trail between 56th and Newcastle Way. It is away from traffic. Great exercise to pick-up groceries too.	Neighbors, Newport Hills Swim and Tennis club, and parks. Natural, easy, and convenient. Neighbors host regular block parties, beautiful outdoor setting.	It is a place where families can play outside. Plenty of space to ride bikes and play in the street like in the 60s and 70s.	L. E
Walking, running, biking, and waterline corridor. No need to navigate around traffic. Many people use this to walk to stores, library, and exercise.	Neighbor homes, yards, parks, and the pool. Safe, free, and beautiful in the natural outdoor setting.	Perfect neighborhood in the 60s 70s 80s 90s and continued to today. Families and senior citizens enjoy block parties, street activities, i.e., walking, playing, biking, and games, socializing	Lori D
119th. Trees and bushes.	Mustard Seed tavern	I live with a deep gully behind me. I have planted redwood trees and many cedars over 40 years. A forest in my backyard	John C

A street or pathway I enjoy using in this neighborhood is:	An important place for me to gather with others in my neighborhood is:	Is there anything else you'd like to share about your neighborhood?	Name
Dog park. convenient, large/spacious.	Newport Hills shopping center. close/convenient.	Like to see the Newport Hills shopping center renovated and made more attractive	
123rd/122nd. It allows us easy access to the shopping center and is a good walk around our neighborhood.	The mustard seed at the shopping center It's easy and convenient, friendly and offers room for a large group to get together. When our kids were young, it was also the Newport Hills Swim and Tennis club.		
120th Ave SE. It is the only one.	Meeting them at the mail boxes or when they walk their dogs. There are no other options.	New inhabitants are bringing a welcome mix of ages and ethnicities. It is too bad that it is so difficult to meet them.	Patricia R
		The old middle school (Ringdall) would make a great walkable retail space	Stacey K
The bike trail. Its in my backyard.	At their house. No other places.	Would like the power lines buried	
Walking past Newport Hills park to the shopping center. I appreciate not having to drive everywhere!	At the parks and businesses in the shopping center	I am concerned that our shopping center will be turned into something with less business options. I hope if it is redeveloped the commercial space remains prominent.	Sarah R
121st Ave, 123rd Ave. Makes a good walking loop.	Mustard Seed pub. It's in walking distance.	Ensure neighborhood input for Newport Hills shopping center upgrade. Recent suggestions were not acceptable.	Jamie H
Not maintained by home owners. Lack of yard maintenance and sidewalks.	Newport Hills shopping center. The only place! And that's not special.	In general the area was promised things that have not been done over the years, i.e., new street lights, maybe speed bumps	Ken M
The sidewalk areas around elementary schools. It feels safer than walking in the street, the surfaces are even, there's typically no standing water.	Local eateries We can gather and meet, come and go, sit and share, all while supporting local businesses without having to get in our cars to get there.	I would like to see more action taken to remove/ remediate: derelict cars, vans, campers, etc. with expired tags (and probably no insurance); graffiti, specially on the new walls of 405 freeway as you are exiting to enter our neighborhood; act on, not just ignore, homes with 2 ft high grass, blackberry vines growing into the street, etc.	



A street or pathway I enjoy using in this neighborhood is:	An important place for me to gather with others in my neighborhood is:	Is there anything else you'd like to share about your neighborhood?	Name
Waterline trail. Proximity.	N/A although we see the car club in the parking lot of the (dead bank) every year in the summer	No one calls this Newport except COB. It's sad to think of how one or two property owners can strangle and kill a neighborhood -- see the former grocery property. Newcastle developments use Newport Hills as a shortcut. By the time the property is finally developed, it will be too late. The Spring District and Crossroads get all the love. A dog park that took years to complete is not enough. And please, repave 60th, the dog park etc. ruined a once nice street. Why isn't this survey online?	Mary T & Sam S
There aren't any.	Cloud 9 restaurant		Greg W
		The on-ramp to northbound I-405 at Coal Creek. Cars don't stop for the red light.	
Dog park. Nice people and pets.	Various eateries. Sense of community.	Keep our village-like atmosphere	
SE 56th St and 119th Ave SE. I walk and bike to shop t S-Mart and other businesses.	Mustard Seed, Resonate, Terry's Kitchen, Cloud 9, Newport Hills Woodlawn Park. I enjoy walking in the park and on the trail.	It would be nice to have pickleball courts in the Ringdall facility	Kazuki S
SE 60th St. It connects to parks, neighborhoods, and restaurants nearby.	Playgrounds and dog parks. They're a good place to connect and encourage community involvement.	Continuous investment in communal spaces and well-groomed public areas provides a high level of pride in ownership and in our neighborhood. I welcome more investment in developing and maintaining these spaces for greater access for everyone in the community (young and old)	
118th Ave SE. The uninterrupted bike trail and its connection to the I-90 bridge and downtown Bellevue.	Newport Yacht club, Newcastle Beach park We love to spend our summers near the lake!	We're concerned about the congestion on Coal Creek + Factoria Blvd as it affects how we move around our neighborhood. It is intimidating to travel from Newport Shores to Newport Hills	Taylor L
The loop trail in the new Newport Park.	Mustard Seed. Variety of food served, cozy booths, within walking distance.	Not having sidewalks on most residential streets is an asset because when pedestrian and cars share the same street, the cars slow down	Steve K

A street or pathway I enjoy using in this neighborhood is:	An important place for me to gather with others in my neighborhood is:	Is there anything else you'd like to share about your neighborhood?	Name
Pipeline. Sense of community, safe, green, beautiful.	Newport Hills Swim and Tennis club. Families gather for healthy fun, opens for neighborhood wide events a couple of times per year.	Families here multiple generations -- variety of types of housing: apts, low-income, houses small and large, seniors and young, languages, cultures, sexual orientations, etc. Very diverse in many ways	
Newcastle Park. It's mostly quiet during the weekdays.	Resonate Brewery. Good food and beer.	It is getting too big for its own good. Fewer trees, increasing traffic, drivers becoming more reckless. I also hear there is a plan to build housing (again) in the Newport shopping center which is a bad idea for many reasons. Growth isn't necessarily for the better.	
Dog park hiking loop trail. It's car free.	The restaurants. Food and beverages are available.	I have an ongoing concern about potential development at the Newport Hills shopping center. The developer is always pushing high-density housing, like the Renton Landing. The neighborhood streets and sidewalks don't support this density. Also, Metro's Flex program doesn't serve our neighborhood. Having Flex would solve the problem of transit requiring lengthy walks to get to a bus stop	Marissa S
Eastrail. Relatively safe, active, pleasant, accessible.	Private HOA clubhouses. Safe, accessible, good people.	Cohesive, compatible, diverse, supportive	Rick D
The many hiking trails streets with sidewalks.		Would like sidewalks clear of shrubs, bushes, ground cover and leaves	
None in particular, but I do like walking in our neighborhood most anywhere. And also down to Newcastle Beach.	Tennis/pickleball court. I love to play pickleball and we have friendly games and laugh a lot! Yet it is still competitive.	I like my neighborhood (private with HOA) because there are activities that bring people together. And I would like the Newport Hills shopping center to offer more activities, gathering places, etc.	Gayle E
The dog park in Newport Hills. I love dogs.			

A street or pathway I enjoy using in this neighborhood is:	An important place for me to gather with others in my neighborhood is:	Is there anything else you'd like to share about your neighborhood?	Name
My neighborhood streets. There's not a lot of cars and it's a great walk/exercise for my dog and me. I enjoy looking at yards and plants.		I wish there were more shops and restaurants in the area within walking distance	Nancy H
Pipeline to Newcastle shopping. It is kept in shape and used by many.	Mustard Sed. good food, close, nice people.	Lots of rentals. Owners keep their lawns mowed and wed	
		Yes, in some of your parks, the charcoal dump barrel is steel and it doesn't have any insulation!!! Imagin if somebody pours hot charcol in that and then a child touch the barrell what happen!!!	
We are a neighborhood of people who use our main street along 120th Ave to walk along for school and to connect to Factoria without ever getting support using this fatally flawed survey system based on total resident numbers; the city because we are under 1,000 residents chooses to ignore basic safety needs of 120h Ave SE.	Neighbors homes	Yes, our neighborhood is small in numbers compared to Newport Hills and Newport Shores and the city continues to ignore our needs because members of this program's administration admit this survey produces projects adopted based on the highest number of votes. How can Greenwich Crest ever be heard if this is the case? Shouldn't the city be adopting only projects that first meet basic safety standards before granting non safety projects?	
Pipeline. It provides access to nature trails and the Newcastle shopping area by foot/walking.		The car centered structure of this neighborhood, and most, is a dying model in my opinion. People are vocal in support, but there need to be a node of high-density supported by mass transit and walkable businesses	Elden A
Pipeline trail.	Do not wish to gather @ anyone!	NO!	

A street or pathway I enjoy using in this neighborhood is:	An important place for me to gather with others in my neighborhood is:	Is there anything else you'd like to share about your neighborhood?	Name
Neighborhood streets. They are the only place to walk and meet other people.	None exist. Small neighborhood, no public spaces streets.		Bob M
116th Ave SE. It leads to Newport Hills shopping center, and is an enjoyable neighborhood walk.	Newport Hills Swim and Tennis Club and Mustard Seed. Both give a sense of community and caring for one another.	Something needs to be done about the Newport Hills Shopping Center ASAP! It is dilapidated and unsafe and unsightly. Plans needs to move forward to provide retail space, community gathering center, and affordable housing	
Trail by dog park. Peaceful, green, quiet.	Resonate and Newport Hills Swim and Tennis Club (NHSTC). Clean, friendly, casual. Good food, trivia night, friendly place to swim, workout, connect to neighbors.	The trail to Coal Creek is great but in winter it gets muddy and slippery	Cathleen O
(1) SE 60th St which connects us to East Trail, Newport Hills Park, Newcastle library, and the Newport commercial district! (2) SE 56th St where my kids can safely commute to school using the sidewalk that runs the full distance.	On the street impromptu outside our house. We tend to interact with each other when we see our neighbors and when our kids are playing on the street.	To safely connect pedestrians between SE 60th St and SE 56th St, a sidewalk on 126th Ave SE or 125h Ave SE would help.	
It has sidewalk and streetlight. The street is wider than other areas.	On the street by my house Convenient and there's no other places close enough.	The Newport Hills shopping center can use some major updates to make it current. So it's a better use of the space.	Grace
Lake Washington Blvd. Beauty.			
127th Pl SE. Nice, quiet, comfortable connect well to other streets to make a walking loop.	Newport Hills pool. A lot of friends are members.		Katherine G

A street or pathway I enjoy using in this neighborhood is:	An important place for me to gather with others in my neighborhood is:	Is there anything else you'd like to share about your neighborhood?	Name
I used to enjoy going to the shopping center when we had the market and the drug store, but now I rarely go there because it is so run down and uninviting (and not really safe at night!).	I would love for the shopping center to be revitalized with new shops, trees, grass, and benches for meeting with neighbors	Some of us in this neighborhood have been trying for 20 years to have the shopping center revitalized and would love to see this project come to fruition. It is long overdue and would be so good for our neighborhood!	Linda H
All of it. We walk all the time.	No one gathers in my neighborhood	The city of Bellevue seems to ignore us. Our bus stops are overgrown with ivy/trees, weeds. We are missing sidewalks and curbs. Other parts of Bellevue get repaved streets. We don't, please help!	
Those streets that have sidewalks. They have sidewalks and are safer.		It does not feel as safe as it used to	
	Resonate Brewery. Local, family friendly.	Traffic congestion is barely manageable. Transit limited.	
The Pipeline. Away from traffic, trail to Newcastle services, neighborhood passage frequented by families, seniors, and others.	Nowhere There is practically no gathering places without membership fees or alcohol with dining. New park difficult to use year-round unless you have a dog.	Does not have resources, services of other neighborhoods. Abandoned schools (2), two shopping areas with one abandoned building, and two falling apart with limited services. No city or non-profit recreational opportunities, i.e., community center, youth activities.	
Newcastle Way. Fastest route to Safeway. I wish it had sidewalks on both sides.	Parks. I love being outside and people watching.	Sidewalks down 123rd Ave, please. It's dangerous to walk down the street, even more so with all the construction. Would be nice to renovate the Newport Hills shopping center.	



A street or pathway I enjoy using in this neighborhood is:	An important place for me to gather with others in my neighborhood is:	Is there anything else you'd like to share about your neighborhood?	Name
Noisy, dirty (118th St.) Backed up with cars (path to walkway along lake (old RR line)). Too many cars with no outlet to go -- too many stoplights. See above. After all these years of tearing down trees, highway construction, we couldn't get a roundabout to move traffic along.	Bike/walk trail along 405 but the northbound path is either unfunded, undone, etc. We've been waiting a long time to have that path finished. We've put up with major highway, sewage line, or some kind of construction for YEARS.	We've been the forgotten corner of Bellevue - SE/ Newport/Factoria. Landscaping is put in, it dies, and there are no efforts to replant. It's a heavily car-required area, not very walkable at all. Trails, we appreciate but the railway bridge and points worth needs to be finished. Please!	
The Pipeline trail and trailhead on 60th. I walk my dog 4-6 times a week.	My neighbors house or Starbucks (The Commons). It's a yearly neighborhood barbecue tradition and Starbucks is close walking distance.	Right-turn from Coal Creek Parkway to SE 67th has become a cut-through to avoid Coal Creek Parkway and Newcastle Way stoplight traffic. I thin speed umps along 66th/67th St/128th would be a good feature to preserve the neighborhood feel	Victor B
The Pipeline. It is a car free zone.	Newport Hills shopping center. It's locally owned, close and accessible.		
None. Disjoints. Example, the Newport Hills area has a small ballpark, dog park, shopping area, but they are all disconnected [] to stroll about. People use these spaces, but in a very utilitarian, individual way. No true sense of community.	The park. A public space that, if designed well, may be utilized by a wide range of ages for a wide range of activities (e.g., sports, walking, biking, bird watching, community gathering, etc.).	We need to address the trees and power lines	Thao T
Newport Hills woodland park trails. Because I like the forest access.	Resonate pizza. Food is good, reasonably priced and healthy.	I don't like the new houses being built. They all look the same. No character like the original houses. The new ones are too tall and don't feel friendly to me.	Linda D

A street or pathway I enjoy using in this neighborhood is:	An important place for me to gather with others in my neighborhood is:	Is there anything else you'd like to share about your neighborhood?	Name
123rd Ave, and the trail from our cul-de-sac (121st Ave SE) to the creek. It leads to the shopping area and is relatively safe to walk.	Outside our home as I'm working in our yard. That's when I see people as they're walking by and can visit with people.	What I love about our neighborhood we've developed with neighbors. It started with one neighbor who hosts monthly neighbor dinners. Not everyone comes but there are usually about 15 people. Because we've gotten to know our neighbors, we help each other out whenever there's a need.	Chris M
119th. Access to Chevron, Q Nails, S-Mart.	Dog park Dog can run. I meet nice people.	Some yards are unkept and overgrown because the houses are vacant. Owners should maintain outside!	Cheryl J
119th. Love the new sidewalks.	Newport Heights. My kids are in a school there.		
	Starbucks. It is convenient.		
		We are strong supporters of re-zoning and redeveloping the Newport Hills shopping center!	
116th SE. I like recently added pedestrian/bike lanes at edges of road.	The Mustard Seed. Good food, friendly, welcoming.	The Newport Hills shopping center could offer more opportunities for convenient shopping and places to meet. Specifically a food market that has basic essentials and is not only for Asian market. A café or coffee shop like a Starbucks.	Kenneth R
Rare-weather permitting, dog park in Newport Hills. Instead of spending tons of money here it is not being used because of our weather. money should be spent on indoor areas.	Restaurant/bar/tennis court/pickleball/dog park	There is too much crime and traffic	

A street or pathway I enjoy using in this neighborhood is:	An important place for me to gather with others in my neighborhood is:	Is there anything else you'd like to share about your neighborhood?	Name
SE Goth St (one side of it). It is the only way to connect to other locations or walkable paths to Newport hills shopping center and parks.	abandoned school. There are no tennis courts in the entire neighborhood that are in decent shape. The courts are in sad disarray. Sport court is nice. But pickleball and tennis court would be great.	There are lots of nice people in the neighborhood. However facilities are lacking, shopping areas in Newport area are outdated. There are very limited bus routes. We want busses to the UW directly and rapid transit to Factoria and Downtown Bellevue. Route 167 was here but now got cancelled this year. It caused young people to move out of the area. please add pickleball courts.	
The Pipeline trail and trailhead on 60th. A quick way to walk and bike to Lake Boren, Library, Safeway, ect.	We don't know of any but would like to have a place	There is a blind corner at 129th Ave SE and SE 60th St when entering and making a left turn from 129th to 60th cars speeding up the hill nearly T-bone me. I cannot see the vehicles coming up and around the curve unless I pull into their lane. my only choice then is to stomp on the gas or try to quickly back up/ at times there will be a car behind me.	Jackie J
I enjoy walking from Newport Hills to Newcastle park via 112th/Lake Washington Blvd. I enjoy the nature and water at the park. Due to the 405 construction the exit 9 overpass is hard to walk over because cars do not stop by the crosswalk. I hope it is safer when construction is done.	Newcastle Beach Park. It is the only park to gather that has seating. The dog park has some seating but it is used by the dog owners.	There are a lot of older people in my neighborhood that like to walk and enjoy the sunshine. Some are too old to walk down to the lake and live in condos and have no place to sit in the sun. Some sit in private neighborhood parks and are told to leave by the neighbors. Can you turn the land behind the shell gas station in to a small park with seating? Sometimes I walk there just to see the sunset. This is what the older neighbors need but all could really enjoy this. Thank you for asking these questions.	Diana K
NA.	Our cul de sac	Would like more information from city about well driving and slide dangers. Also construction in lower park and ride	Linda H
Trails/sidewalks path to lake Boren. The trail portion seems enjoyable because it feels more like being in nature.	Newport Hills Park. Walkable distance + has playground + trail.	The commercial center of Newport Hills is grossly underutilized and in need of revitalization. A mixed use residential/retail/commercial project would be very welcomed.	Brian H

A street or pathway I enjoy using in this neighborhood is:	An important place for me to gather with others in my neighborhood is:	Is there anything else you'd like to share about your neighborhood?	Name
Pipeline trail. no cars.	dog park	Add speed cameras for traffic enforcement of speed limits and crosswalks	
		Many people use Newport Hills as a cut through contributes of traffic safety and calming measures	
Newport Hills dog park, trail behind it and playground. It is new refurbished, attractive and well cared for by the city.	Soccer Field (Newport Hills). clean and cared for.	The shopping center is pathetic. The buildings are run down many spaces for businesses closed. This needs to be a priority for the city to get good business and more restaurants to make shopping attractive and vital to the neighborhood	Mary Anne D
Greenbelt trails. I'm not on the sidewalk or street.	The new park. I can walk the new train down to the park and ride and then easily get to the Eastrail trail.	The garbage at the apartments on SE 60th is an eyesore and actually at times a health hazard. I would love to see a multi-generational community center at the Ringdall property with senior center, pre school, after school care related programs	
Eastrail. nicely connected look forward to northward extension beyond Coal Creek.	Clubhouse. Yacht Club.	Would be nice to have a gate allowing pedestrians and bicyclists to go directly from Newport Shores to Newcastle Beach park	Charley B
Nothing here but Coal Creek Trail! I think being surrounded by nature is so needed with how much of life is lived on a screen. Emulating as much natural vegetation in our neighborhood as possible is a huge plus - especially if it is self maintained.	Just my house but the dog park nearby is super popular. None of us have pets but would love a trail or park or something so we have an excuse to be outside.	There just seems to be a lot of people that love to get outside for a walk- good lighting and safety features like emergency stations and consistent sidewalks light up crosswalks are always se appreciated	Jaelyn K
120th Ave SE. Our neighborhood is a big loop but only half has sidewalks.	kids bus stop	Would love sidewalks and a playground	Elizabeth K
		If people are going to rent and buy homes it would be wonderful if they took all of their goods	

A street or pathway I enjoy using in this neighborhood is:	An important place for me to gather with others in my neighborhood is:	Is there anything else you'd like to share about your neighborhood?	Name
	Newport Hills has only two or three gathering spaces. revisit reply to question #1. the commercial area needs an upgrade. compare Newport Hills commercial zone to Newcastle Commons.	The roadways, sidewalks and bike lanes have been paved over the last few years. ????	Kenneth T
Eastrail. It's the only truly safe place to bike in the entire area close to where I live.	Sadly, my own house. There are no community gathering spaces or small businesses here.	Can we just stop always catering to cars and for once give walkers and bikers equal priority	
We enjoy the S-Mart plaza and its surrounding area. It's really convenient and vibe.	Newport Heights Elementary School. I can play with my friends there.	We would appreciate more regular maintenance of the old Jing Mei site	Yicheng Z
	somewhere else. Most of the original inhabitants are in the breathless, pulseless state supporting the foreign invasion started by Nazi party members: Donald Trump, Joe Biden and their handlers.	Having ignored that it was Duwamish tribal land, I feel the houses should be removed and given back to hem in pristine shape	
The trail system. It's great exercise, and close.	Newport Hills Swim and Tennis Club and the Mustard Seed bar. I contact people who live near me.	The city came and cut down 50 trees on 123rd Ave SW. I hope they plan to resurface the lumpy road and revegetate after the waterline project. There is no central meeting point for folks to hang out. It's an isolating neighborhood.	Melissa S
	Mustard Seed, Resonate. Food, friendly.		

A street or pathway I enjoy using in this neighborhood is:	An important place for me to gather with others in my neighborhood is:	Is there anything else you'd like to share about your neighborhood?	Name
	I'd like to find one!	There's not much going on. It's a place to sleep and then drive elsewhere to do things. The Newport Hills shopping center has seen better days. I'd love to see more things to do in the neighborhood that I can walk to, or take a bus to.	Gregory B
Powerline. Convenient, weeds and vines and trees cut and wide space for walking.	No gathering, most of the people stay indoors		
SE 56th St. It connects me to our neighborhood shopping, where relationships are reinforced and community is strengthened.	NH Shopping Center. Other than parks, it is the only public gathering space.	Our neighborhood has repeatedly been forced to defend itself. Development is not a problem, it is necessary. The problem is major land owners working with city employees to undermine our community by changing zoning, reducing services, exceeding ht restrictions, and increasing density without solving the impacts. The shopping center can be redeveloped, maintain services adding housing and making a profit for the owner. It just needs to be done while protecting the community.	Bill D
Pipeline/Waterline trail. Use it for running.	Resonate	Ringdall school would make a great community center. Woodlawn dog park is a mudhole. It needs to be relandscaped. A path from Woodland Park to Newport Hills Park and Ride would be great. Through west ravine.	Galen W
East rail trail, Coal Creek trails, Newcastle Way (69th), Woodlawn Park trails, path around Bellevue park every day.	YMCA, Bellevue community centers (North and South), botanical gardens, Newcastle Beach park, Woodlawn Park, Newport Hills	I so appreciate Bellevue. Most beautiful neighborhoods, great sidewalks, green spaces, incredible neighborhood parks, trail system, gardens, community centers are the best everywhere	Kristen S
405 Trail. It allows me to bike to and from work, in a safe and pleasant way.			
	Church		Susan C

A street or pathway I enjoy using in this neighborhood is:	An important place for me to gather with others in my neighborhood is:	Is there anything else you'd like to share about your neighborhood?	Name
Most streets except for 123rd from SE 60th to 69th. Lack of sidewalks and handicap accessibility.	None, really. Not many choices other than a couple restaurants. Not too many places are kid or grandkid inviting and fun with activities.		
NA.	Newport yacht club. For the community	Not at this time	
	New Castle Library; we live between Newport Hills and New Castle Library and the library is within walking distance of our home.	I love that there are several trails near our neighborhood. While we do have to drive to reach them, it only takes a few minutes, allowing us to immerse ourselves in nature often.	Nan M



A street or pathway I enjoy using in this neighborhood is:	An important place for me to gather with others in my neighborhood is:	Is there anything else you'd like to share about your neighborhood?	Name
<p>119th</p> <p>There's bike lanes and sidewalks on both sides, and amenities like gas station, restaurants, and mail store. I go this way to the elementary school a lot.</p>	<p>The restaurants or the school playground/ garden.... I volunteer at the NHE garden, and all those places are walkable for me (helps I'm on the same terrain (not very uphill nor downhill)).</p>	<p>The Newport Hills Townhomes, which I lived in from 2019-2021, is a real gem! The open spaces between buildings and mature gardens are gorgeous and make for great spaces to play with family/ neighbors. Nice to have tennis/ pool there, too. The NHSTC is also great, but too \$\$\$ for me.</p> <p>I LIKE that we have an older look/feel to the neighborhood. That's when buildings were built to serve human lives, not "modern" boxes built for size and \$\$.</p> <p>I don't know how to get folks to just get out and gather and talk to one another. Even school ice cream socials leave me talking with the few folks I already know.</p> <p>Maybe it's just me? I do like the idea of talking with more community members.</p> <p>I'm serious about the sustainability aspect...it's part of emergency preparation/ community resilience, too. I would be SO proud of a community center that could be a safe space to go to to recharge phones, warm up, use the restroom, and maybe even shower when power is otherwise out. (Earthquakes cause that, too!)</p> <p>The Newcastle Library really isn't thaaaaat far away.</p> <p>Crossing Newcastle Way and the uncomfortable traffic is the biggest challenge there. Would be neat to connect more somehow.</p>	<p>Diana W</p>
<p>Neighborhood paths and the bike trails over the old railway along lake Washington blvd</p> <p>Because they're accessible from our neighborhood and give a long continuous path.</p>	<p>Our yacht club because it's the main accessible space for our neighborhood and there aren't other near city spaces</p>		

A street or pathway I enjoy using in this neighborhood is:	An important place for me to gather with others in my neighborhood is:	Is there anything else you'd like to share about your neighborhood?	Name
safe, the neighbor's street has crosswalk implemented.	factoria and newcastle, because it has good resources.	The traffic at Factoria is unreasonably bad. The Eastgate park and ride is not safe.	Jay
A street or pathway I enjoy using in this neighborhood is snake rode because it leads to boba.	An important place for me to gather with others in my neighborhood is high-school because I can meet my peers .	it's safe	Seohyun P
129th Ave SE, that's where I live.	Newport Hills Marketplace, community center	no	
		I live off Newcastle Way and 123rd, and would LOVE to see a crosswalk on that street. I'm hesitant to take the bus or go out walking because cars go zooming and there isn't a safe way to cross the street. I would also love to see more street lights in our neighborhood.  Community wise, it definitely seems like the Newport Hills shopping center is severely under utilized. Not a lot that caters to the 25 to 55 demographic.	
The sidewalks in my neighborhood because I use them daily for walks. I also occasionally walk/run/bike on the east trail.	Factoria Mall, because its a place we often run into neighbors and friends	While we love our neighborhood and the surrounding area, there are signs of change that are troubling and gives my family worry - homelessness, graffiti, garbage. All these do not make us feel safe	
Eastrail because it's flat and connects to other parts of the city (although it's under construction right now...).	Woodlawn Park Dog Park because it's dog-friendly and so a fun place to meet other neighbors with dogs.	I've met many neighbors who have lived here for over 50 and 60 years which I think is so neat! There's something magical about this place if so many people are choosing to live their whole lives here. -- I'm sad they cut a couple bus routes that I used such as the 167. I used to take the 167 to work and now I drive instead.	

A street or pathway I enjoy using in this neighborhood is:	An important place for me to gather with others in my neighborhood is:	Is there anything else you'd like to share about your neighborhood?	Name
Bellevue way, This is the Main Street that I always drive.	Factoria, This area is very convenient for me to shop and dine.		Moonjoo J
158th Ave SE, it is good to walk.	lattawood park, it is in the center of my neighborhood	Spiritridge Elementary is too far away from the Eastgate neighborhood.	Soo L
119th  it's our Main Street that leads to Newport hill shopping center.	Newport heights elementary  I take my kids to play at their playground	I love Newport hills. I've lived here for almost 15 years and am raising my children here but it needs an updated shopping center, more playgrounds with parks (bball and pickle ball court) and picnic tables.	Tenzin S
I enjoy walking in Newport Hills because the neighborhood streets are walkable and I can create routes that have flat sections and hilly sections.	An important place to gather is Newcastle (!) because Newport Hills doesn't have any indoor public spaces or any places to meet someone for a cup of coffee. Yes, the Mustard Seed is fine, but it's a full service restaurant and sometimes I'm looking for a casual place to linger.	1. Newport Hills (and South Bellevue, in general) is in need of "third places" where people can meet up and gather. The outdoor parks are fine, but it's not viable to gather there when it's dark or rainy. 2. The main roads in Newport Hills have become a thoroughfare for people avoiding I-405. I don't know how this can be addressed, but it's a bit of a nuisance for the NH residents. 3. It would be great to see NH reenergized by improving the shopping center with businesses that serve the neighborhood, and by utilizing the vacant school buildings for community use. Thank you!	Carmen A
116th Ave as it is parallel to the lake and Somerset for the view.	At home as not many coffee places available to go out to	It is very safe n welcoming neighbourhood. It needs some sidewalks eg on 116th ave in lake heights to make it safe to walk around. Also having a park would help .	Archana S
Forest dr. It's walkable.	Someone's place. There are no other places like parks.	Need transit bus routes on forest dr for high schoolers. Speed bumps on forest dr as people speed throughout the day. Not safe and loud.	Bo

A street or pathway I enjoy using in this neighborhood is:	An important place for me to gather with others in my neighborhood is:	Is there anything else you'd like to share about your neighborhood?	Name
SE 47st We live on the street and got a lot of visitors.	Park enjoyable, accessible, and safer than stay on roads.	A lot of cars stall on Samersset Blvd and our neighborhood street for the stunning view. It is not safe for driving around.  It would be safer for the visitors have a public park for such visit and hangout instead.	Mengke
around Factory Mall because I go shopping or go to the bank.	Factoria Mall because the parking lot is large and easy to find.	운동시설이 마련된 야외공원이 있으면 좋겠다	
Nothing particular.	Factoria Mall Not so many options	None	Sonia A
Lake Washington Blvd because it is the main street to shopping.	Restaurants (Terry's Kitchen) and coffee shops (Starbucks on Coal Creek) because it is close and I can't drive in the dark.	We need a community center for seniors or multi-generational community center. It would be perfect in the schools that are no longer in use such as Ringdall, etc. There are a lot of active seniors who would benefit from a central community space and not have to drive too far.	Sheri G
Has specific pedestrian access, quiet, wooded, has less crowded homes. Because scenic views and safety are the main reasons that I would go out walk my kids on street.	Parks. Because at parks with lawn and playgrounds I would worry less about noises or traffic or kids safe play space	We are already super crowded. Please no more affordable housing no more high density apartment complex	Iris
coal creek greenbelt.	Newport Hills Swim and Tennis Club, I am a member. there are no indoor public gathering spaces.	don't sell us short, don't rezone us to make a buck, don't ignore what we need as a community. We do NOT need an extra 100 cars at the intersection of 119th and 56th. We don't need Toll Brothers or other developers to come in, make their \$ and leave us to deal with the mess.	Karina K
NA.	Newport High School, kids goes there.		

A street or pathway I enjoy using in this neighborhood is:	An important place for me to gather with others in my neighborhood is:	Is there anything else you'd like to share about your neighborhood?	Name
My connected streets and the pipeline path because they are accessible and easy to walk in.	on the street or at Starbucks, basically, because that's all that I have.	I love my neighborhood, but there's not enough eateries and shops close enough and there's not enough options to get to other areas or Seattle without driving. In fact, we don't go to Seattle unless we have to, mainly because it's too tough and too expensive to drive there.	Janet B
The trail behind my house because it is a flat paved place to walk.	The road behind the houses because that's where everyone parks there cars and exits there house and see each other outside.	<p>The trail should be patrolled I almost been hit by electric bicycles going pretty fast but I can't really here them until there going past me.</p> <p>It would also be nice to have a bench along the trail every little while and or a bathroom. I can't tell you how many people knock on our door to use the restroom. And perhaps a cleanup crew because people leave there animal feces usually in the little baggies in spots all along the trail. I don't understand why they bother to pick it up but don't put it in the proper place.</p> <p>Further, I don't like that the city county took out all the trees because it makes the road noises from 405 so much worse. The wall built to reduce road noise doesn't go high enough to reduce road noise but it also reduces WiFi and cellular connection.</p>	Mary-Ruth B
		Improved cell service connectivity (all carriers - ATT, Verizon & T-Mobile) are poor.	
We walk on 116th Ave NE since it has less traffic than 119th.	other homes in my area lake heights we have no other place	Great neighbors. Turning into more rentals. our shopping area is very run down and attracts homeless and graffiti	

A street or pathway I enjoy using in this neighborhood is:	An important place for me to gather with others in my neighborhood is:	Is there anything else you'd like to share about your neighborhood?	Name
56th because it is a connecting street between the two halves of the neighborhood.	The Newport Hills Shopping Center - because I use it as a place to gather with friends and family location like, Resonate or Cloud 9, I also use the Chevron Gas Station - to help me with my auto maintenance. I love the swimming pool.	I have been here for over 25 years, It has been overlooked and it is looking neglected.	Cheryl N
The only pathway I like is the coal creek trail. I don't feel safe walking on my street without sidewalks or street lights - too scary.	The shopping center area when it used to have a real grocery store.	125th Ave SE is horrible.	Colette O
none of them, because they're all full of cars and lack decent sidewalks.	at my house, because there's nowhere good to hang out.	We are currently living through the I-405 expansion, yet there will not be a way for us to take advantage of the new BRT line. As far as I can tell, there are no walking or biking-friendly connections to any stops along the BRT. It's all super car-centric, which is very disappointing.	
All of Newport Shores. It is a safe neighborhood for the most part.	The club house because everyone can use the facility.	Needs stop signs or speed bumps. Too many speed ALL the time. Re-design entrance. Too many close calls with bicycles who don't stop and assume you see them. Have an idea for the design .	Cindy W
Coal Creek hiking trail, Newport Hills dog park trail expansion, Newport Shores sidewalks.	activities outside, gather together during the days		

A street or pathway I enjoy using in this neighborhood is:	An important place for me to gather with others in my neighborhood is:	Is there anything else you'd like to share about your neighborhood?	Name
Cascade Ky It's flat, long, and good scenery for a walk or jog.	The empty lot near the entrance because kids and dogs love to run around there. The clubhouse because it has good facilities for activities (tennis, volleyball, playground, pool) and to casually meet up. Neighbors houses because of rain coverage The bus stop because it's covered and central	Best neighborhood with neighbors that prioritize events and activities for all family members, ages and interests. Neighborhood is clean and flat. Generally safe, but have frequent theft and burglary that could maybe be reduced with more and better street lighting. Eastrail path improvements and extension are amazing and help connect the neighborhood and offer great biking and walking route.	
all - great.	pickleball courts because there is a great community	because of some of the home values, we are a target for prowlers	
Coal Creek trail corridor. Waiting and waiting for the railroad trestle section going North to connect walking trails.	Our neighborhood pool-house. We disparately need to make repairs/improvements/ replacements but it is grandfathered in and close to the lake. A variance granted would be wonderful in order to upgrade it to add safety underwater lights etc.	Again - safety and the massive amount of 'cut through' traffic along 118th in front of our neighborhood of people trying to avoid freeways. People still block our neighborhood entrance and don't follow the signs/ road painting directions to not block entrance. I'd also like to see Bellevue be proactive in understanding hedge fund international real estate investors buying up massive amounts of South Bellevue Properties. An owner occupancy tax might need to be addressed? More and more homes sit empty or are used for rotational housing investments for school district access by foreign nationals. I'm not sure the city of Bellevue really understands the enormity of this and its consequences to the communities.	



A street or pathway I enjoy using in this neighborhood is:	An important place for me to gather with others in my neighborhood is:	Is there anything else you'd like to share about your neighborhood?	Name
the street to the Yacht-Club, good place to have around enjoy the waterview.	all streets, chat about things	It is definitely to dark at night, all the streets are very dark, hard to read the street names, house numbers and see people walking	Petra S
Walking on Coal Creek Parkway to Factoria mall. I wish there was a prettier walkway to avoid all the cars.	in Newport Shores. It's so beautiful and welcoming.		Karene F
The streets within the neighborhood, it is convenient.	The pickle ball courts, it creates community	I would like the city to replant the trees that were taken down along the freeway to block the noise	
Cascade Key, I live on it and love to take walks on it with neighbors and with my dog.	Newport Shores Yacht Club, that's where lots of neighborhood events take place.	It's the best neighborhood I've ever lived in. We have lots of families to hang out with and lots of activities to participate in.	
Coal Creek trail. It is close but feels like you are getting away from the hustle.	Resonate. Great food and one of the only places to hang out in Newport Hills.	Newport Hills desperately need revitalization. There are a few loud voices that continuously drown out any movement toward improvement. The neighborhood needs more "second places". A coffee shop, walkable destinations.	
Green spaces park trails. I feel safe on well maintained trails and enjoying nature and a place to have safe exercise.	local restaurant like cloud 9 and Resonate because welcoming atmosphere and not too expensive	Great services.... my dentist, the best car shop / gas station, my cross fit gym, the swim and tennis club is famous is here Good schools.	Cheryl N
120th because it's close to my house and doesn't have traffic.	No where because there isn't any place we would meet	The shopping center needs revitalization	Karen K
60th Its provides access to almost all arterials.	The Mustard Seed It is large and not as noisy as Resonate	Newport Hills is becoming a very common 'cut through' neighborhood, encouraging fast drivers, and drivers who run stop signs. During the 405 shutdown, our street - 116th AVE SE - was part of a detour (with signage) and cars were bumper to bumper stopped for hours. Traffic control police were needed!!	T. F

A street or pathway I enjoy using in this neighborhood is:	An important place for me to gather with others in my neighborhood is:	Is there anything else you'd like to share about your neighborhood?	Name
Lake Heights Street, lots of trees, feels like not being in the city. Opens up to 116th, with views of Lake Washington.	Mustard Seed. Fun place, good food, everyone made to feel welcome.	It is a comfortable, quiet neighborhood with lots of trees and greenery. It does not have the infrastructure to support more multifamily buildings, or mixed use. The shopping center needs to be updated, but not with 2-5 story housing. These would destroy the peace, safety and livability of the neighborhood.	
118th Ave SE there is no traffic.	Not enough options. Cloud Nine because it isn't a bar	Would like to see the Ringdall sight made into a community center/senior center. The pool is for members only and the Y in Newcastle is not on transit, and also requires membership.	
Not particularly safe or pleasant, but I want to walk close to home.	I'm not aware of any good place to gather in the Lake Heights area.	South Bellevue seems to have been forgotten by Bellevue. 2 former school sites abandoned and 1 , soon to be 2 former market sites neglected for years. This area seems to be slowly dieing.	Sue B
eastside trail along water front to Coulon Beach. Open feeling, wide enough for bikers & walkers.	Our clubhouse because its safe & fun to see the neighbors. Many organized activities for all ages.	The HOA / NYC Board is amazing. Volunteerism in this neighborhood makes everything tick.	Peg A
This is a neighborhood of walkers - many residents walk throughout the neighborhood (all our streets, plus the parks, the Pipeline Trail, and access points to the Coal Creek trail system) all year round.	All of the elements of our Newport Hills commercial district - shopping and services, restaurants, batting cages, CrossFit gym, churches, swim club - are important gathering places for us. They give our neighborhood its small-town feel, and let us meet many basic needs without driving on Coal Creek Pkwy, Newcastle Way, Factoria Blvd and I-405.	Adding housing density in Newport Hills doesn't make sense - new units would not be "affordable" and would add to traffic congestion on our tight roadways because transit and other non-car modes are not practical for travel off our hill. Redevelopment of NH Shopping Center property should instead include "senior living" units, which are greatly needed in the area and would entail fewer additional vehicles.	Ann B

A street or pathway I enjoy using in this neighborhood is:	An important place for me to gather with others in my neighborhood is:	Is there anything else you'd like to share about your neighborhood?	Name
Piping Access.			Betty
New Dog Park: even though I don't have a dog, I walk there with a friend.	There isn't one.	There are 2 unused school district properties and an underused shopping center that could be developed for housing, retail and community gathering spots. A community center offering (among other things): Day care/after school svcs; social activities; classes; volunteer opportunities and community services would be a great addition.	Sally W
116th that links so many north and south streets and parks.	Starbucks and parks.	Need to stop speeding and loud muffler cars.	Greta P
The trail/walk at the dog park on 119 <sup>th</sup> .	None		
Burke Gilman bc it goes to Newport beach.	Newport pool	I wish it had access to coffee shops stores like u village that were close. Like in Factoria.	Julie B
The trails and the pipeline because of the nature and the people who use it regularly.	Not in Newport. Because there is no public gathering places	The vacant schools and the old shopping center detracts from the neighborhood and promotes activities that diminishes the safety of the neighborhood	
The pipeline and/or Coal creek trail Because they are not overly developed.	Local coffee shops and restaurants Because we love to support neighbor business owners.	Residential Roads are narrow and the addition of Newcastle Commons has maxed our larger access roads.	
I like to walk along 177th Ave SE up the hill because it has lovely views of the water. And I want to use Lewis Park trails because they make me forget that I am in the city and immerse me in nature.	Parks near by, but using them is more challenging during the winter. It gets dark faster. We need nodes or plazas that have light, have sitting areas that encourage gathering, and are safe for children to roam around	The streets in our neighborhood are wider than they need to be. The City of Bellevue can narrow the street width and use some of the corners as gathering spaces, or they can add more green, green stormwater management or kids' bike trail or kids paths to school	Malda

A street or pathway I enjoy using in this neighborhood is:	An important place for me to gather with others in my neighborhood is:	Is there anything else you'd like to share about your neighborhood?	Name
Coal Creek Bike trail; secluded / separated from cars.	nowhere; I dont gather		Joshua W
The road to the park. There are no cars and a short distance.	The park in front of my house. My friends and I visit it often because it's an open place and most of my friends are close.	No	Harang H
Summer ridge trail, it's long.	Summer ridge park, it is big	Nope	
Snake road It leads to boba tea.	School I learn there	No	
A street or pathway I enjoy using in this neighborhood is my pathway to school because its relaxing.	My highschool because I can meet my peers.	No	
I have no particular street I enjoy over another.	lattawood park because at the park has lots of good views and is very comforting to walk in.	no.	William Y
			Luke K
116th because there's bike lanes. 119th Ave because there's buffered bike lanes.	SMart because I can get my groceries there in a convenient way.	Generally it feels safe to get around the neighborhood by bike except for 60th Street. Especially the intersection with 123rd Ave and headed west there should be some bike amenities to match the rest of the corridor.	Hanoch Y
SE 64 St, good walkway, well paved and greened.	Newport Hills Dog Park, it brings all dog lover together, give dog space to run, neighbors to connect and encourage people to leash dogs out side of it		Yifan Z

A street or pathway I enjoy using in this neighborhood is:	An important place for me to gather with others in my neighborhood is:	Is there anything else you'd like to share about your neighborhood?	Name
waterline trail, it's a relatively-natural trail that connects multiple neighborhoods.	Newcastle town center, there are some public amenities that are within walkable distance from Newport Hill community	In public transportation point of view, Newport Hill community is a bit isolated from the rest of City of Bellevue, or even greater Seattle metropolitan area, since we only have one bus route that goes to downtown Bellevue.	Jeff C
116th Ave SE - it is less busy than 119th, relatively flat, and connects to Ringdall and the Newport Hills Dog Park.	Newport Heights Elementary School - of the turf fields and playgrounds for the children. Previously, it also was part of most dog's walks but it has become less dog-friendly recently.	Not thrilled with all of the McMansions being built in the neighborhood and vacant houses.	Justin H
117th ave since it is flat.	Shopping Plaza has good restaurants and parking	Would like to fill in the vacant shop space	Daren
Unsafe - walking path is not organized.	Public park and public buildings - we are able to conduct in safe and welcoming environment	Unsafe due to crime	Sean
60th Street, its flat and has good side walk.	newport hills dog park. lots of friendly people and very easy going	the dog park gets very muddy. please do something about it. I would love if there was more public transportation available especially along 112th , lake washington blvd like near the shell gas station or the park along 60th. Right now I need to walk all the way to the park and ride which is three quarters of a mile away or to the chevron gas station.	Venkat S
Not save anymore, too many speeding drivers.	Not save, too many speeding cars	There are Too many speeding cars in 119th avenue, and you lazy city public servants are doing anything to help this neighborhood.	

A street or pathway I enjoy using in this neighborhood is:	An important place for me to gather with others in my neighborhood is:	Is there anything else you'd like to share about your neighborhood?	Name
the Trails because they provide an immersive opportunity and serenity.	BellSqr Mall	I live on Lake Washington off of exit 9, Lake Washington Blvd SE. We've had that road torn up for over 18 months. I wish we had fiber available for my internet service, I'm stuck with Xfinity. Was hoping Newcastle park access was off an exit and not down my street, way too much disruptive traffic in the summer. Would have been nice with all that construction that access to the park was off Coal Creek and not my road. Other than that, utilities seem to go up with little notice, water in particular. We'd all like to see the city give back more annually to the homeowner in fees. I'm not sure I can recommend the city as a friendly place, it's become a very selfish city.	Karan
the bikeway outside of the community because you can mostly avoid cars.	Parks because I can take my dog there for exercise	We need to improve safety - cars and trucks, both residents and contractors, speed heavily and make it unsafe to walk my dog in the neighborhood. Some vehicles double the posted 25 MPH maximum without thought.	Joe Y
eastrail, safe with no cars.	South bellevue community center, for pickleball	would be great to finally get Eastrail connected to rest of system. Would be great to have more courts for pickleball, as well as indoor courts during winter months	Henry H

A street or pathway I enjoy using in this neighborhood is:	An important place for me to gather with others in my neighborhood is:	Is there anything else you'd like to share about your neighborhood?	Name
the Water Line Trail, because it (almost) connects to Coal Creek Village shopping area. It allows me to ride a bike to the shops in relative safety.	<p>my home, because we don't really have indoor gathering spaces in our neighborhood. We have restaurants if you want to count those as gathering spaces. But if you just want to sit somewhere without buying food or drinks, you're out of luck.</p> <p>the elementary school because it has a great playground that is accessible to kids in the neighborhood.</p> <p>the dog park, because it has a great playground and my daughter likes looking at dogs.</p>	<p>Why are there two empty schools in our neighborhood? Can we do something useful, neighborhood-serving with them? Some ideas: Petting zoo, Maker space, Tool library, Repair cafe, Neighborhood.</p> <p>Can we somehow get the shopping center redeveloped into a place with shops and apartments to help sustain the shops? There used to be interesting shops there but a lot of them went out of business. There is also way too much space wasted on surface parking at the shopping center.</p>	Sander V
The first trail north of Woodlawn Park; It's quiet, full of nature, and makes our dog happy.	Resonate Brewery; they host trivia, the patio is dog-friendly, and they serve pizza and beer.	Let's activate Ringdall Middle School. Bring back the buses that stop in our neighborhood.	
	Resonate brewing ; great place	Not enough tree shade at 60th and 119th heading north. Too exposed to intense sun and hot in the summer. Better trash collection and parking enforcement at apts on 60th and 123rd.	



A street or pathway I enjoy using in this neighborhood is:	An important place for me to gather with others in my neighborhood is:	Is there anything else you'd like to share about your neighborhood?	Name
I enjoy riding my bike or walking around the Newport Shores neighborhood because it's flat. However, cars regularly speed through the neighborhood and it has become unsafe for children to play near the street or ride bikes. Please consider speed bumps in the neighborhood.	Factoria Shopping Area and Mall because it's convenient and has many services/stores.	Speed bumps to slow drivers in Newport Shores would be ideal.	Scott B
Lake Washington trail because it's safe, can get me to fun places like Coulon Park, Mercer Island or Enetai.	My house because the shopping center is a mess and I am not a member of the swim club. We host many neighborhood gatherings at my house for Halloween, summer and neighborhood parties.	Revitalizing the retail core of Newport would be amazing! I am worried about traffic and parking but whatever we have today is terrible and needs to change.	Dan F
Skagit Key - traffic is limited and I feel safe walking on the street itself, even though the sidewalks themselves are too narrow or non-existent.	Newport Shores Yacht Club, it is a neighborhood gathering spot with ample parking	Sidewalks are narrow, but the streets feel safe.	
Pathway to park.	We mostly gather at the clubhouse	It would be better and safer for children if the entry was not used for U-turns by construction crews/delivery trucks during peak school hours	
the railroad line trail because it allows for a safe place to walk/run/ride.	the yachtclub because it is a central spot for kids/families to gather.	Important to keep our neighborhoods safe from crime.	

A street or pathway I enjoy using in this neighborhood is:	An important place for me to gather with others in my neighborhood is:	Is there anything else you'd like to share about your neighborhood?	Name
The Bellevue to Renton Rail Trail and Lake Washington pedestrian trail along coal creek because I feel they're safe and well maintained.	Our yacht club facility (pool, volleyball, pickleball & tennis courts, and playground) because they are clean, well maintained and inviting	It's a great place to raise a family and meet neighbors. I wish more neighborhoods had as much to offer without the steep price tag.  Please do more to erase graffiti, stolen/ littered shopping carts, clean up litter or offer more garbage cans at bus stops & crosswalks.	Duayne Z
all the "keys" or streets. very walkable neighborhood.	the clubhouse because there's room for many people and many different activities including indoor and sports.	street lights are very nice	Erik B
near the parks - we have great green spaces.	in the shopping center - because it is a central meeting place near homes and parks.	Definitely needs updating and more community spaces	
	Newport Hills shopping center area because its a perfect gathering place within the neighborhood and centrally located in the neighborhood and surrounding neighborhood/s.	round abouts would be ideal so we can keep traffic moving in a controlled manner.	Tony M
The pipeline trail, it's quiet and feels like the country while being close.	Mustard Seed, it's close and usually not too crowded and a lot of long time residents go there	There's a lot of talk about the Newport Hills shopping center being re-imagined; this is very much in need, but I worry that over building to increase density will wreck the friendliness and safety of the neighborhood	
Area around Ringdall and park as it's a safer place to walk.	Restaurants in shopping area. Atmosphere and ease to get to.	Traffic getting on and off the hill especially during commute times is not good. Area cannot handle additional housing. Increasing number of cars cut through Newport off Coal Creek to access freeway.	Al D

A street or pathway I enjoy using in this neighborhood is:	An important place for me to gather with others in my neighborhood is:	Is there anything else you'd like to share about your neighborhood?	Name
My neighborhood streets because they are accessible.	Newport Hills Swim & Tennis Club because it is a welcoming neighborhood community resource.	Appreciative of the sidewalks going in on 123rd, but need to reduce traffic congestion & choke points into the Newport Hills 'island'.	Nick M
Any arterial that promotes walking and biking.	Newport Hills shopping center because central and a natural location to gather and connect	We need focus from Bellevue leadership to bring this neighborhood up to similar standards of the rest of the city	Stuart C
Newport Shores Well maintained low traffic.	marina, my house beautiful and easily accessible	Love the neighborhood BUT needs new sidewalks--many are cracked and pose a trip hazard	Andrew C
Cascade Key it gives me easy access to both I405 and I90.			Frank D
116 ave SE because it is less travelled, neighborly and well kept.	We frequent the Mustard Seed and Resonate pizzeria because they are convenient but not within walking distance. Spaces are large enough for groups and families. The current Chevron gas station is a vital meeting/support business and need to be retained.	The shopping center space needs to be redeveloped and brought up to current standards but not bankrupt the owners and neighborhood customers. We understand that any commercial development will involve additional rental and condo housing. To fit in the neighborhood this housing should follow the example of the current apartment complex and set the buildings back from the street 30 to 40 ft and protected from the street with parking spaces. This would allow buildings of 4 or 5 stories to fit into the existing neighborhood. What made NH a great place to live was the young families and children populating the local schools, sports and churches. Families need to be encouraged with this housing.	Larry T
The Newport Shores streets are relatively quiet.	The clubhouse because it is close.	It is quiet, lacks traffic.	Ken L

A street or pathway I enjoy using in this neighborhood is:	An important place for me to gather with others in my neighborhood is:	Is there anything else you'd like to share about your neighborhood?	Name
the Eastrail walking/biking path from Newport Shores towards Renton ... no roads to cross, nicely maintained, great for running or walking.	at each others' home, only ... there are no public places that are walkable	The XX outside Newport Shores are beneficial leaving the 'hood, but 118th is a terrible jam with folks avoiding 405 South. The mandatory "No right on red" before 405 is a terrible idea and clogs our streets. Plus, the city's inability to connect Eastrail between 118th/Coal Creek Parkway and downtown Bellevue is a disgrace -- Look at what Kirkland did in much shorter time. Sure, there has to be a new overpass for 405 and two bridges to make ped-friendly, but it's taken way too long.	Bill P
Easttrail to Coulon because it is separated from automobile traffic.	We used Newcastle Beach Park when our children were younger.	I would like to see the current Newport Hills Shopping Center completely renovated to make a real center for the community with shopping, restaurants, meeting spaces, green spaces, and housing opportunities for the workforce, etc	
The pipeline. Limited access to vehicles.	Restaurants, they are comfortable and close.	Needs both "store" areas cleaned up but still affordable for the small businesses there.	
The trail because I like to walk.	Tennis court for pickabul playing	It's a great neighborhood	Shimon M
The trails, they are nice to hike.	The dog park, because it is one of the only places we have	Need more restaurants	David S
upper Coal Creek Natural Area - it has a parking lot and great trails and access to the stream.	We don't have a place to gather in Newport Hills --- no coffee shop or meeting place that is fun.	I love the fact that I can walk along a street and then enter into a walking trail which is cleared and well maintained. A city in a park --- what a wonderful idea.	Pamela R
The area around Newport Heights Elementary because it has sidewalks.	Resonate Pizza and Terry's Kitchen because they're the only decent places to get food, drinks, and that have something else going on (pool, sports on the TV)	I want to see it get more attention from the city and I want the Newport Hills Shopping Center owners to be kicked out so we as a community can move forward	
		CUT THE TREES BACK - this so far 6 days without power is insane	

A street or pathway I enjoy using in this neighborhood is:	An important place for me to gather with others in my neighborhood is:	Is there anything else you'd like to share about your neighborhood?	Name
Bike path along Lake WA Blvd. It is safe for walking and biking and connects me to other things like the rail trail and the Coal Creek trail system.	Factoria Mall area. We like to go out to eat together and it is central to the area and the high school.	The area across from Newport High School where construction is half finished is a major eyesore -- and very disappointing given all the trees destroyed. Factoria Mall is really empty -- seems to be dying	
Walking on the sidewalks. It is safe and you also see/ meet other people.	The playground. It is an active and fun place.		
Inside the park. Great for short walks.	Crossroads dogpark It is a convenient place for owners to gather and have fun with dogs. Especially a lot of housing here don't have a yard for dogs.	1, Some issues need to be addressed. Reckless drivers on NE 5th St, they tire burn and drift. 2, Some people eat and drink in the mid of night along NE 15th St leaving trashes everywhere, posing danger to the community. 3, Homeless stays in Crossroads park sometimes. 4, Porch Pirates	
	My room		邵增荣
117 Ave. Bellevue S.E.	Parks, convenient	playground for kids	杨淑芳
117 Ave Bellevue S.E.	Park	playground for kids	Benming Z
Near the Factoria Mall because there are stores and hospitals.	Factoria Mall, it is close and easy to visit.	I wish there were more places that young people can use.	한혜원
Nice.	Nice	No	Tiffany K
	Bellevue Square		
Bellevue Square. Lots of facilities.	Bellevue Downtown Many restaurants, cultural facilities, and shopping places.		노정화
		I wish there were no more homeless people. Factoria region	Jimin W

A street or pathway I enjoy using in this neighborhood is:	An important place for me to gather with others in my neighborhood is:	Is there anything else you'd like to share about your neighborhood?	Name
Bellevue Downtown Park because it is easy to get there after finishing shopping from the Bellevue Square.	Bellevue Sqaure because it is easy to park there.	I hear many people say Factoria is becoming a dangerous place after Eastgate Shelter opened. Please find a way to solve this issue.	조연이
Park because healthy habits are very important.	Garden, public space accessibility like a park and convenience.	The most important factors are accessibility to connect each other and safety.	이수진
I walk from 24th street and 130th Ave, toward Cherry Crest Elementary. It is uphill and perfect to walk for leg strength exercise. Also there are some "free libraries" in this neighborhood which is very nice.	Mercury coffee & roastery in Bridle Trail, Woods coffee near Wholefoods market, Farine bakery in Bellevue.	(1) There is a short trail right in front of my house called "Viewpoint Park". This park is shaded and deep place, although small. My family used to go there a lot for walking, but these days there are some suspicious people hanging around there or stay there with a tent. I guess they are homeless. It doesn't mean they are dangerous, but I can't go there anymore due to potential risk. These days, there are many Asian hate crime. We concern about the potentially being a victim of Asian hate crime. (2) There is a marijuana store recently open on 130th ave. NE right where the light rail is passing. (other side of the Blue Sky church) I am just a bit concerned because I don't want this area to become a meeting place for people who sells/buys drugs. Marijuana is legal, but usually drug users don't just do the marijuana. It's likely they also use some other stronger illegal drugs. This is still a safe neighborhood, but I am always being cautious. Thank you.	Alicia B
	Farine Bakery and Bellevue Square area, Old town on Main St.	I wish Bellevue Botanical Garden can have some more youth programs.  I heard there was a cut in funding Bellevue School District. Why is that and how will it affect our public schools?	Alicia B

A street or pathway I enjoy using in this neighborhood is:	An important place for me to gather with others in my neighborhood is:	Is there anything else you'd like to share about your neighborhood?	Name
Bellevue trail behind 179th Ave SE because it's very woodsy and well maintained. Neighbors report any trees that are blocking the trail and the city takes care of it pretty fast.	Lakemont market place where Town & Country is because it has the restaurant space now and there is also a Starbucks in the same plaza.	Lakemont HOA does a great job maintaining village park drive. We just need City and PSE to review the metal covers to be more slip resistant.	Esther C
Lewis Creek Park, it is beautiful, safe, and clean.	Starbucks, it is safe, well-situated, and walkable.	No need to have buses. I'm afraid of outsiders coming. I want to protect the beautiful, safe town from thieves.	Chanju L
I often walk my dog and stroll on the trail by Bellevue Way.	We would go to Bellevue Downtown Park.		Dean Z
To visit stores and restaurants near the Factoria Mall.	Factoria Mall because it is easy to park and you can do shopping and enjoy great food.	It would be great if there was another place like South Bellevue Community Center.  I wish there were more places people can enjoy conversation and more places to have gatherings.	Chloe P
Golf course trail since it's peaceful and well maintained.	Golf townhouse		Soomin P
Lattawood Park, nearby, beautiful.	Factoria. has malls and restaurants, not far away		
		The library is open for short hours. I hope it's open every Sunday!	Wei L
Roads near the house. It is a nice place to walk.	Starbucks It is convenient.	I wish there were many small parks.	오현숙
	Bellevue's Old Town and Bellevue Mall. It is because there are many stores and restaurants.	There are too many houses with overgrown lawns.	Heather C
None.	None		Yeonsoo K



A street or pathway I enjoy using in this neighborhood is:	An important place for me to gather with others in my neighborhood is:	Is there anything else you'd like to share about your neighborhood?	Name
Louis creek park.	Bellevue downtown. No good restaurants or coffee shops in Eastgate. No one walk around in Eastgate malls especially Toyota kicked out the coffee shop	After close the schools, our neighbor school takes 30mins by car. It assigned without considering distance or family needs. Most of trails are very short and hard to connect one another except cougar mountain area. Hard to use public transportation No good place kids hanging around with friends. Should go to the Bellevue downtown	Jibok P
Dirty, debris from a tree.	Bellevue downtown, many restaurants and cafes	Need to allow to cut down or trim giant trees	Irene C
Smooth traffic, because it's too congested now.	A walking path, because we enjoy walking together	Traffic is too heavy now, making travel inconvenient.	Simona S
Just walking around our neighborhood. It is good to walk my dog for 15 to 20 minutes so I don't have to drive outside. Along with many trees, there are not so many cars driving so it is safe.	Coffee shop because people can enjoy conversation sitting in comfortable chairs regardless of the weather.	It would be great to move the bus stop in front of Walmart located at 148th St - Main St.. It is dangerous because many cars enter that region coming from intersection, causing traffic jams and danger.	Jin Sun K
Newport hills park is good place to walk with dogs.	Nope		Youngmi L
		I hope there are free indoor venues that offer organized activities suitable for all age groups.	Faye H
Newport hills dog park and playground I have a dog and kids.	Community center Multifunction	The plaza across from S mart can be better planned and utilized; the vacancy rate is too high now.	Xi D

A street or pathway I enjoy using in this neighborhood is:	An important place for me to gather with others in my neighborhood is:	Is there anything else you'd like to share about your neighborhood?	Name
Sort of clean.	Home, there aren't many outdoor gathering places	Renovate infrastructure, power poles, network, etc. Windy days can bring a power outage and internet blackout. Aesthetic aspects are secondary. Basic power network security is far more important than appearances. Energy and resources should be put into the most critical issues.	Pete
Coal creek trail system, great for hiking.	Park	Wish for more pickle ball courts	
No.	There is no such a place.		
The trail is flat and scenic, which lifts the spirits.	It is a park or clubhouse, providing space	More dining establishments and venues	
Waterline trail, because it is close.			Jungmin O
Old Jingmei elementary school The long pathway is easy to walk.	Newcastle Beach Park. It is a large park but there are too many duck poops and the water smells a lot in summer.		Bonghyun S
			Yoonji C
No good walking paths, so I cannot think of any street names.	Factoria Mall. Because parking is abundant.	Traffic congestion is too bad. I avoid Factoria area at any cost.	Jiyeon Y
		There are too few bus services, only one No. 246 bus per hour from Somerset to Newport High; and the schedule isn't fit for school times.	Huanze
	There is no place for gathering nearby.	Please pay more attention to the safety of this area.	
Somerset Trail. Because it is close.	BC Club Hilton Hotel. Because it is quiet.	In many ways, it is a safe city in Washington state with many choices provided for us.	이인옥
Surrey down park, Playground.	Cafe, to avoid rain	want to see it with more safety and security	Bernadette K

A street or pathway I enjoy using in this neighborhood is:	An important place for me to gather with others in my neighborhood is:	Is there anything else you'd like to share about your neighborhood?	Name
From 124th to wilburton park Not crowded, close to my house, nice view.	King county library, Bellevue city hall, Woods coffee : Free meeting room, parking lot	Expanding opportunities for community use of public buildings When a company provides infrastructure such as space use to the community, support for the company's resource utilization such as tax benefits	Eun L
	Park, mall, coffee shop		Chun H



CDD-24-30485b-Newport



For alternate formats, interpreters, or reasonable modification requests please phone at least 48 hours in advance 425-452-6930 (voice) or email [bbrod@bellevuewa.gov](mailto:bbrod@bellevuewa.gov). For complaints regarding modifications, contact the City of Bellevue ADA, Title VI, and Equal Opportunity Officer at [ADATitleVI@bellevuewa.gov](mailto:ADATitleVI@bellevuewa.gov).