

# Curb Management Plan

## Transportation Commission Recommendation

Karen Stash, Chair, Transportation Commission  
Andrew Singelakis, Transportation Department  
Chris Long, Transportation Department

July 17, 2023



# Direction

---

Direct staff to return with a Resolution at a future meeting to adopt the Curb Management Plan as recommended by the Transportation Commission.



# Agenda

---

1. Project Overview
2. Components of the Curb Management Plan (CMP)
3. Next Steps



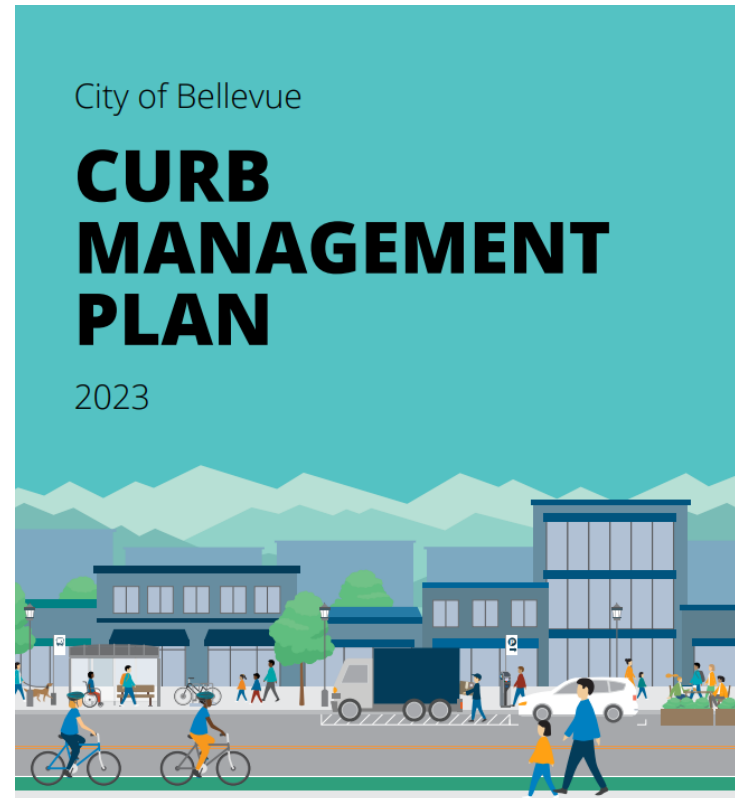
---

# Project Overview

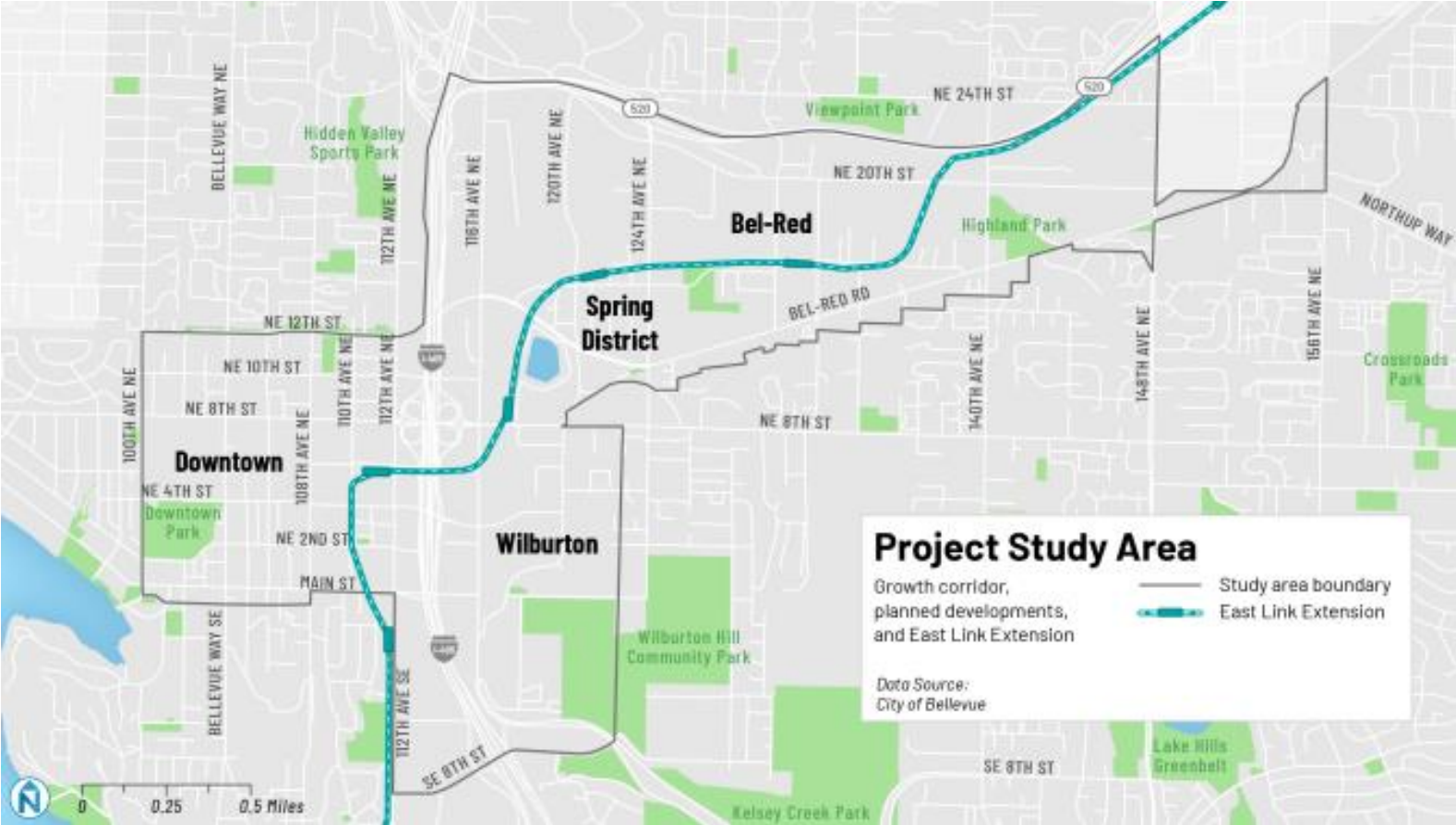


# What is the Curb Management Plan?

- Creates a vision for managing curbside areas in the Urban Core
- Comprehensive set of recommendations and best practices
- Advances stakeholder goals and priorities for addressing curb challenges



# Curb Management Project Area



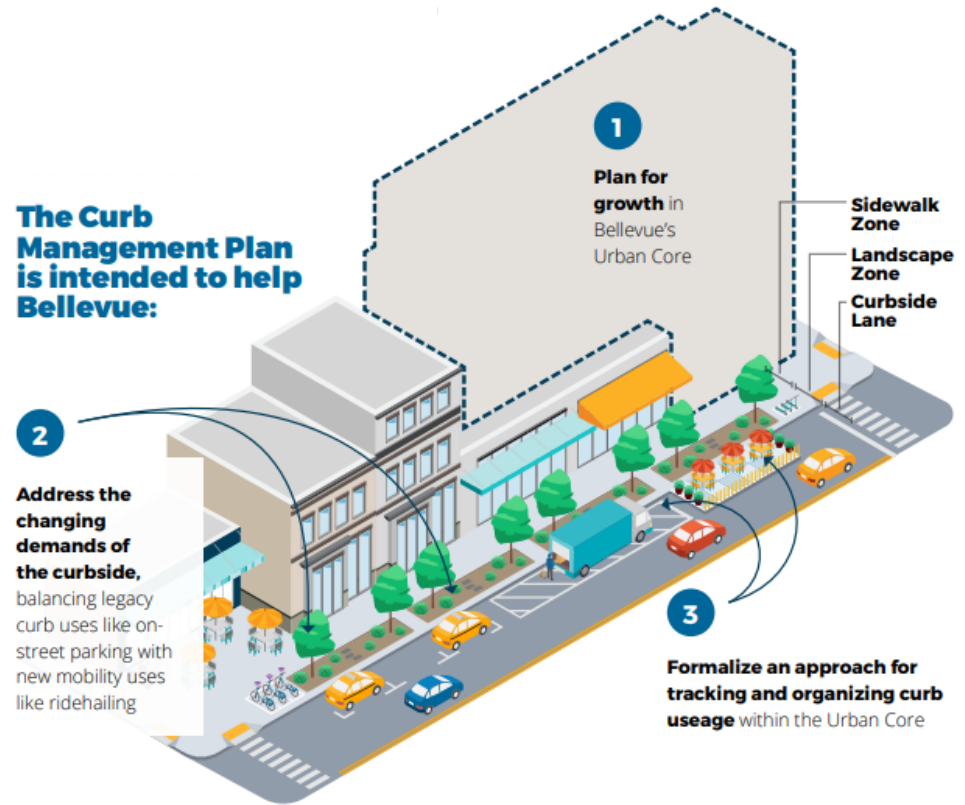
# What is “the curb?”



# Why is Curb Management Needed?

## Existing Challenges

- Operations
  - Ad-hoc process
  - Competing curb demands
- Permitting & Pricing
  - Inconsistent fee structures
- Enforcement
  - Limited resources
- Roles & Responsibilities
  - Decisions are divided among many divisions





# Principles

---



**Curb Equity**



**Efficiency and Effectiveness**



**User-Friendly**



**Decision-Making Clarity**



**Adaptability and Resilience**



# Policies Highlights

- Adopted through Comprehensive Plan Amendment December 12, 2022
- 13 new or modified policies
- New policy topics
  - Promote use of curb technology solutions
  - Create “mobility hubs”
  - Designate curb space for food trucks, on-street dining and placemaking

*TR-42: Develop and implement a Curb Management Plan that designates a curb typology, establishes a pay for curb use program recommendation, facilitates dynamic curbside management, and accounts for various movement, access, and placemaking functionalities.*



# Engagement – Interviews/Focus Groups



- **Mobility Providers:** TNCs, transit, taxis, micromobility providers
- **Local Businesses:** Kemper Development, Visit Bellevue
- **Developers:** Wright Runstad, Vulcan, GLY, Wallace Properties
- **Transportation Advocates:** BDA, Move Redmond, Complete Streets Bellevue
- **Regional Employers:** TransWest, Microsoft, Symetra, PACCAR
- **Residents:** Bellevue Towers HOA and others from across the city.



# Engagement – Curb Summit

## Curb User Perspectives Panel



**Fiete Krutein**  
UW | Urban Freight Lab  
Delivery and Freight



**Joe Vilardi**  
Bis on Main  
Local Business



**Alex Krieg**  
Sound Transit  
Transit/Mobility Services



**Andrew Glass Hastings**  
TransWest  
Shuttle Service

- Public session:
  - 74 attendees
  - Reviewed existing conditions
  - Users perspective panel
  - Showcase of other cities
- Practitioners workshop
  - 32 invited guests
  - Breakout sessions on curb management strategies
  - Discussion of curb policy



# Engagement – Engaging Bellevue Questionnaire

Bellevue Transportation Dept  
@BvueTrans

Help us create a strategy to address new curbside uses such as charging stations, on-street dining, & rideshare services. Please respond to our Curb Management Plan Questionnaire at [bit.ly/35oCWqf](https://bit.ly/35oCWqf) or drop a pin on our interactive map at [bit.ly/3MzRww1](https://bit.ly/3MzRww1)



8:58 AM · Mar 15, 2022

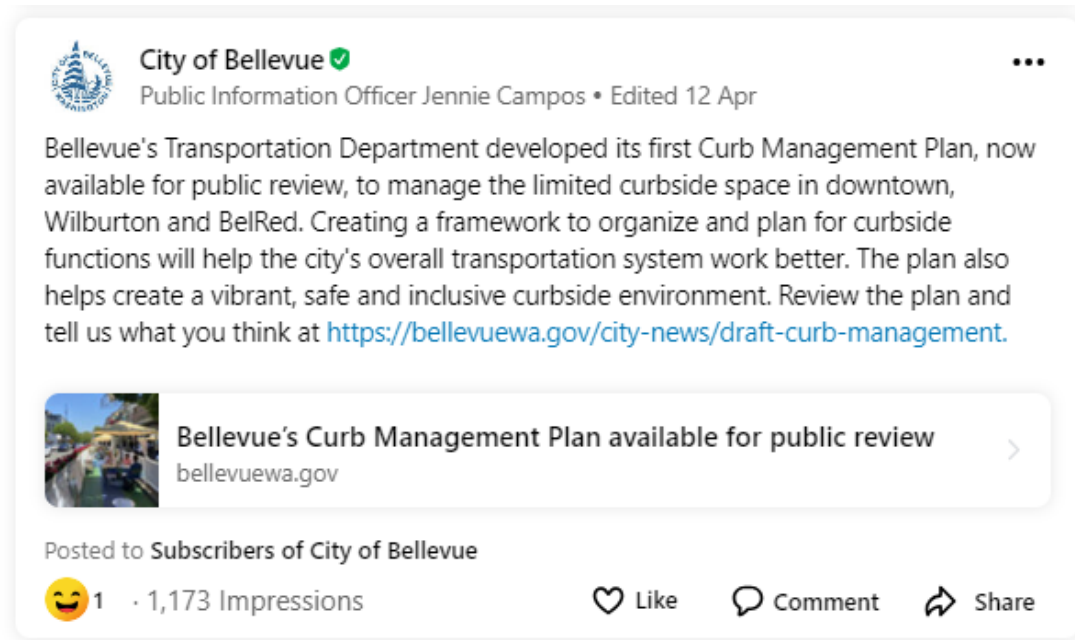
- Survey open for two months
- 195 responses
- Top themes:
  - Pedestrian safety
  - Parking supply information
  - Challenges at curb with growth of downtown
  - Limited interest in new technology for curb management


*“Make Bellevue feel like a European downtown where people & community come first, and cars come second.”*




# Engagement – Other Outreach

- 12 presentations to Bellevue Downtown Association, Bellevue Chamber of Commerce, Bellevue Diversity Advisory Network and Old Bellevue Merchants Assoc.
- 7 Transportation Commission Study Sessions
- 4 Planning Commission meetings
- 3 City Council meetings
- Draft report posted for public comment



 **City of Bellevue** ✓  
Public Information Officer Jennie Campos • Edited 12 Apr

Bellevue's Transportation Department developed its first Curb Management Plan, now available for public review, to manage the limited curbside space in downtown, Wilburton and BelRed. Creating a framework to organize and plan for curbside functions will help the city's overall transportation system work better. The plan also helps create a vibrant, safe and inclusive curbside environment. Review the plan and tell us what you think at <https://bellevuewa.gov/city-news/draft-curb-management>.

 **Bellevue's Curb Management Plan available for public review**  
bellevuewa.gov

Posted to **Subscribers of City of Bellevue**

😊 1 · 1,173 Impressions      ❤️ Like      💬 Comment      ➦ Share

# Engagement – Shaping the Plan

*“Whenever a significant portion of a movement based curbside travel lane is proposed to be permanently converted into a different use, the City will conduct traffic analysis and allow the public an opportunity to provide feedback.”*



*“As new curb management programs and pricing-based approaches evolve within the Urban Core, it will be important to ensure adjacent neighborhoods are not negatively impacted by spillover parking.”*



---

# Components of CMP





# What is does the Curb Management Plan include?

**Curb Practices Guide**



**Curb Typology and Maps**



**Curb Pricing Framework**

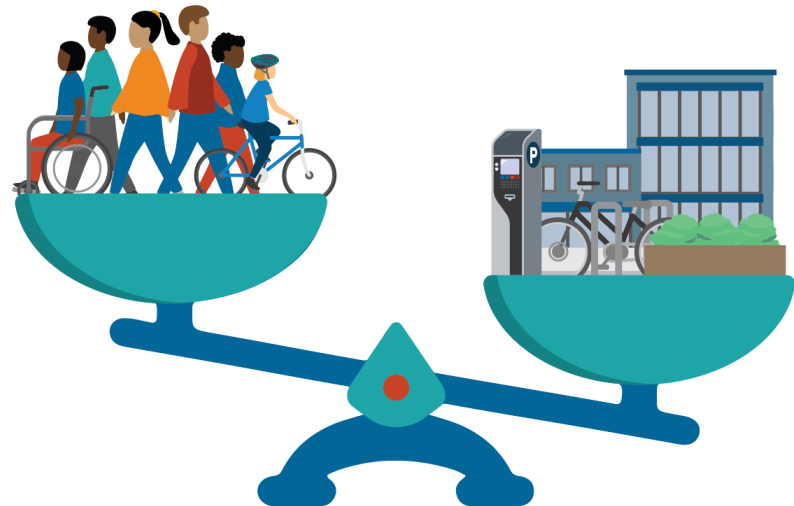


**Curb Pilot Roadmap**

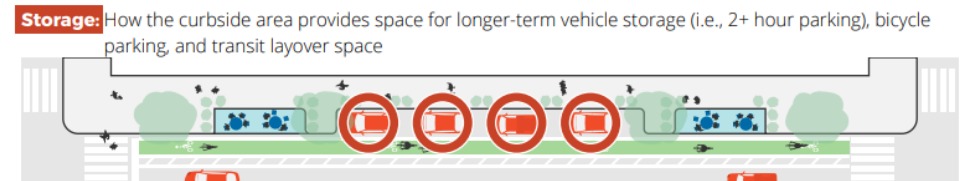
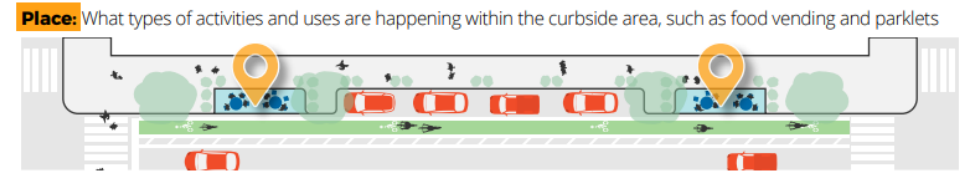
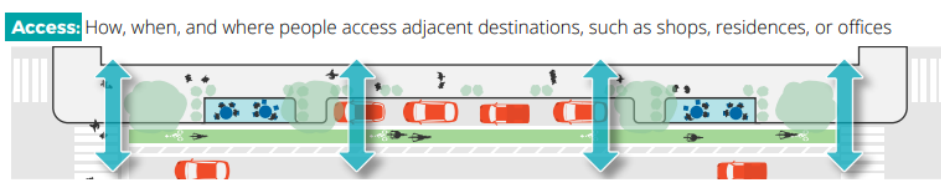
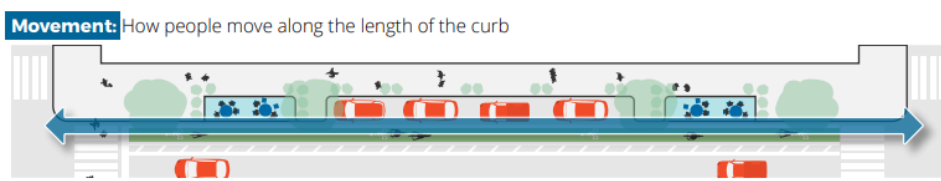
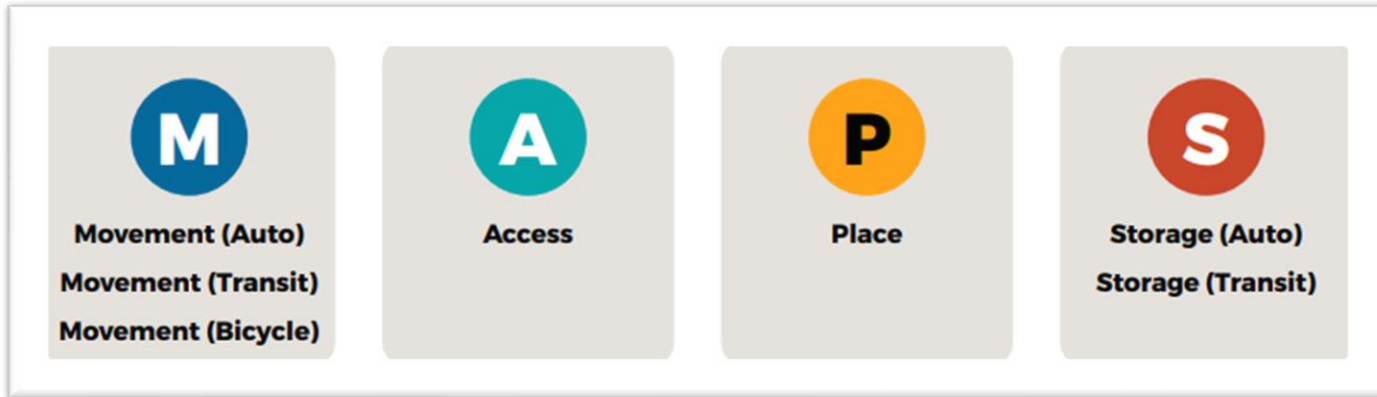


# Curb Supply and Demand

- Curb Supply:
  - The **curb typology** addresses the supply side of curb management
- Curb Demand:
  - The **curb pricing framework** addresses the demand side of curb management



# Curb Typology



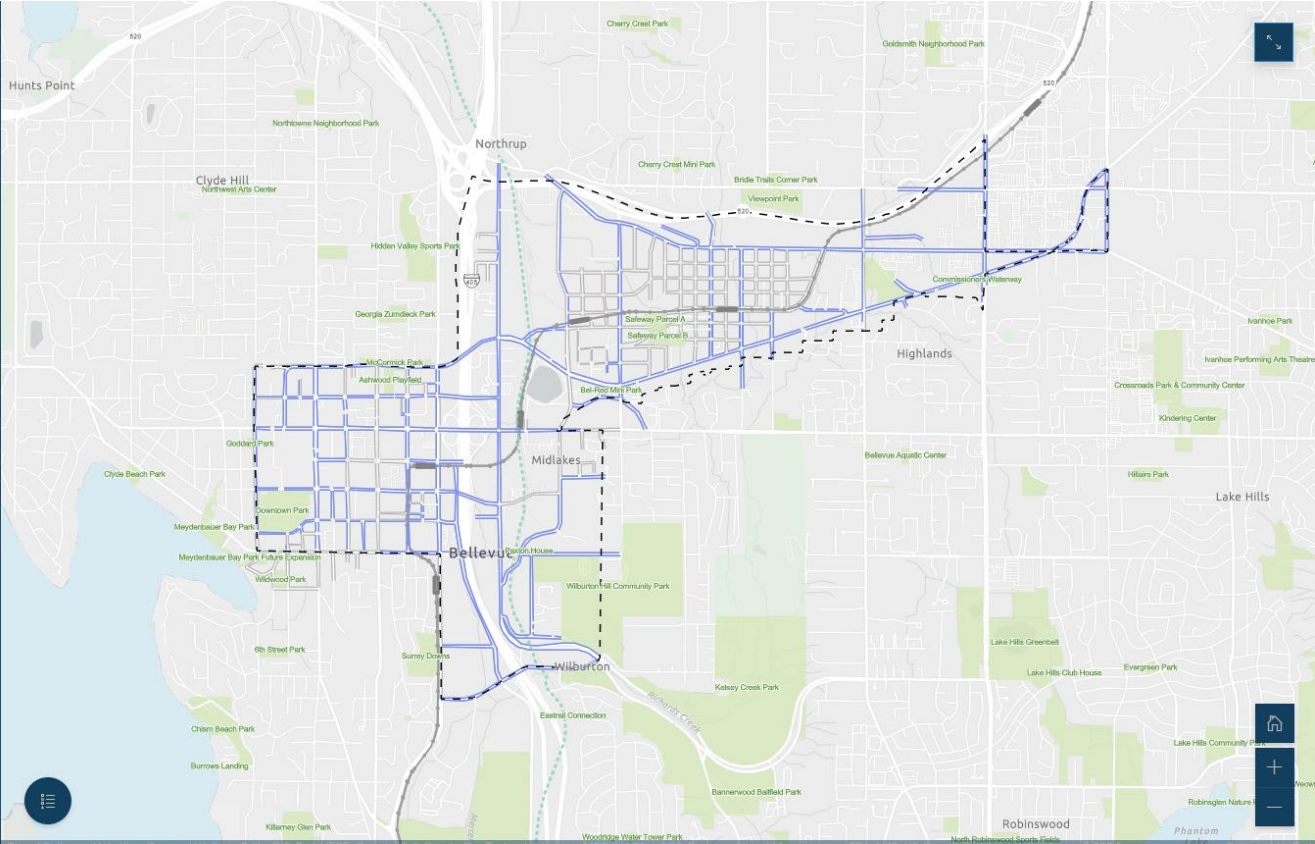
# Curb Typology

## Curb Type: Movement for Automobiles (Existing)

The first curb type shows where curbside lanes are used as travel lanes currently today. This generally means there is no curbside activation seen on these blocks, such as on-street parking or loading.



Curbside travel lane, 116th Avenue in Bellevue



# Curb Practices Guide



**CURB REGULATIONS (RG)**



**STORAGE (ST)**



**CURB ACCESS FEATURES (AC)**



**SUSTAINABLE AND EMERGING MOBILITY (SE)**



**CURBSPACE ACTIVATION (AT)**



**DIGITAL GOVERNANCE (DG)**

---

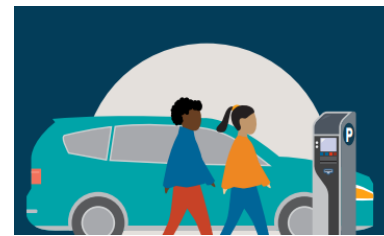
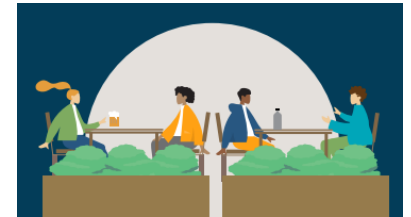
# Next Steps



# Curb Practices Guide: Near Term Next Steps

## Near-term priorities identified:

- Add resources for curbside enforcement
- Perform implementation study for potential paid parking program
- Build and expand accessible parking (ADA) inventory
- Create more passenger & commercial loading zones
- Expand curbside placemaking (i.e. on-street dining)



# Thank you!

## Transportation Commission

- Chair: Karen Stash
- Vice Chair: Brad Helland
- Jonathan Kurz
- Drew Magill
- Loreana Marciante
- Nik Rebhuhn
- Albert Ting



Karen Stash, Chair  
First term ends 2023



Brad Helland  
Vice Chair  
First term ends 2024



Albert Ting  
First term ends 2023



Loreana Marciante  
Second term ends 2025



Jonathan Kurz  
First term ends 2025



Nik Rebhuhn  
First term ends 2024



Drew Magill  
First term ends 2024



Janice Zahn  
Council Liaison

Council Liaison: Janice Zahn



# Direction

---

Direct staff to return with a Resolution at a future meeting to adopt the Curb Management Plan as recommended by the Transportation Commission.

