

Planning Commission
May 24, 2023

Bellevue Curb Management Plan

Presented By:

Chris Iverson | City of Bellevue



Objectives for tonight

- Project team informs Planning Commission on the draft of the Curb Management Plan.
- No action requested at this time.



CURB MANAGEMENT PLAN OVERVIEW

Curb Management Policies

1) Policies in support of Curb Management approved by City Council on Dec 12, 2022

- Ordinance 6707 adopted unanimously
- Policies provide support for curb management practices + Curb Management Plan



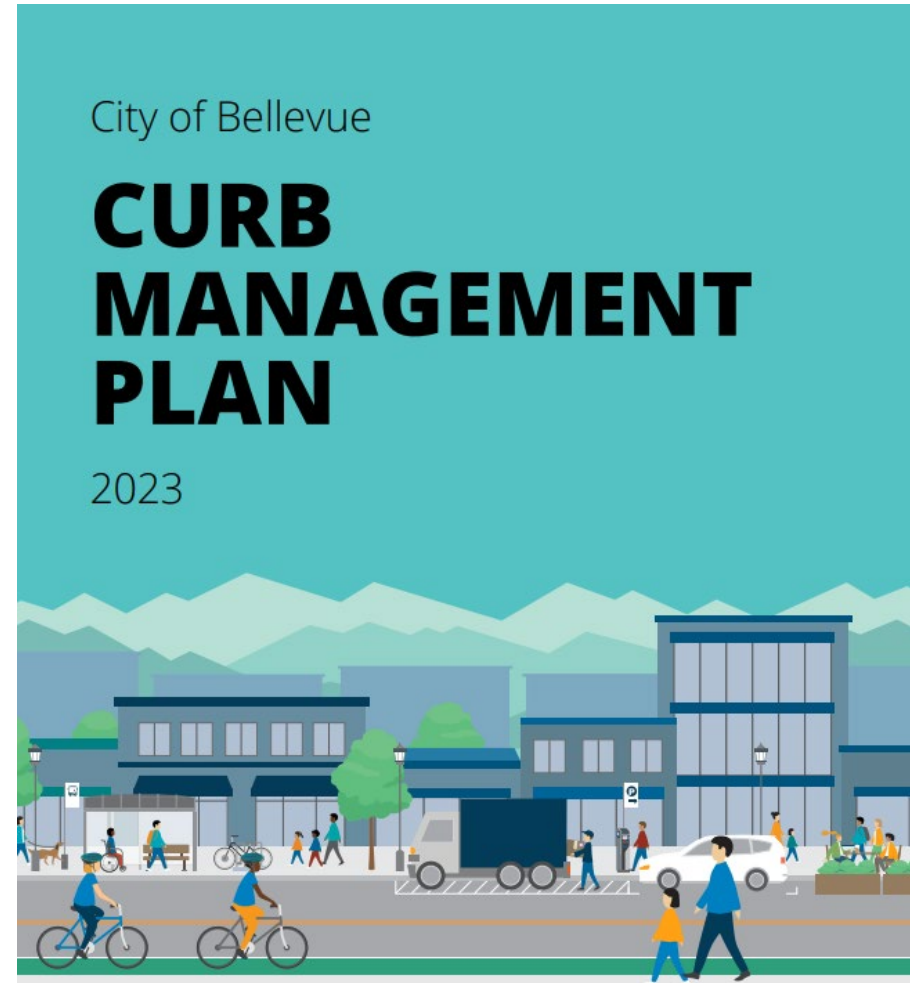
Transportation Element and Downtown Subarea Plan
Ordinance 6707 Adopting 2022 Amendments



December 12, 2022

What is the Curb Management Plan?

The **Curb Management Plan (CMP)** is the culmination of a year's worth of planning and engagement on how best to manage Bellevue's valuable curb space efficiently and effectively.



What does the CMP include?

Curb Management Plan

- **Executive summary**
- **Curb management in Bellevue**
 - State of the curb, public engagement, and comp. plan policies
- **Curb supply and demand**
 - Curb typology
 - Pricing and demand management recommendations
- **Curb Practices Guide**
 - Summary-level recommendations
- **Curb Pilot Roadmap**
- **Looking Forward**



Appendices

- **Appendix A:** Curb Practices Guide (detailed)
- **Appendix B:** Curb Pilot Roadmap (detailed)
- **Appendix C:** Public Engagement Summary
- **Appendix D:** State of the Curb

What does the CMP include?

**Curb Practices
Guide**



**Curb Typology
and Maps**



**Curb Pricing
Framework**



**Curb Pilot
Roadmap**



What does the CMP include?

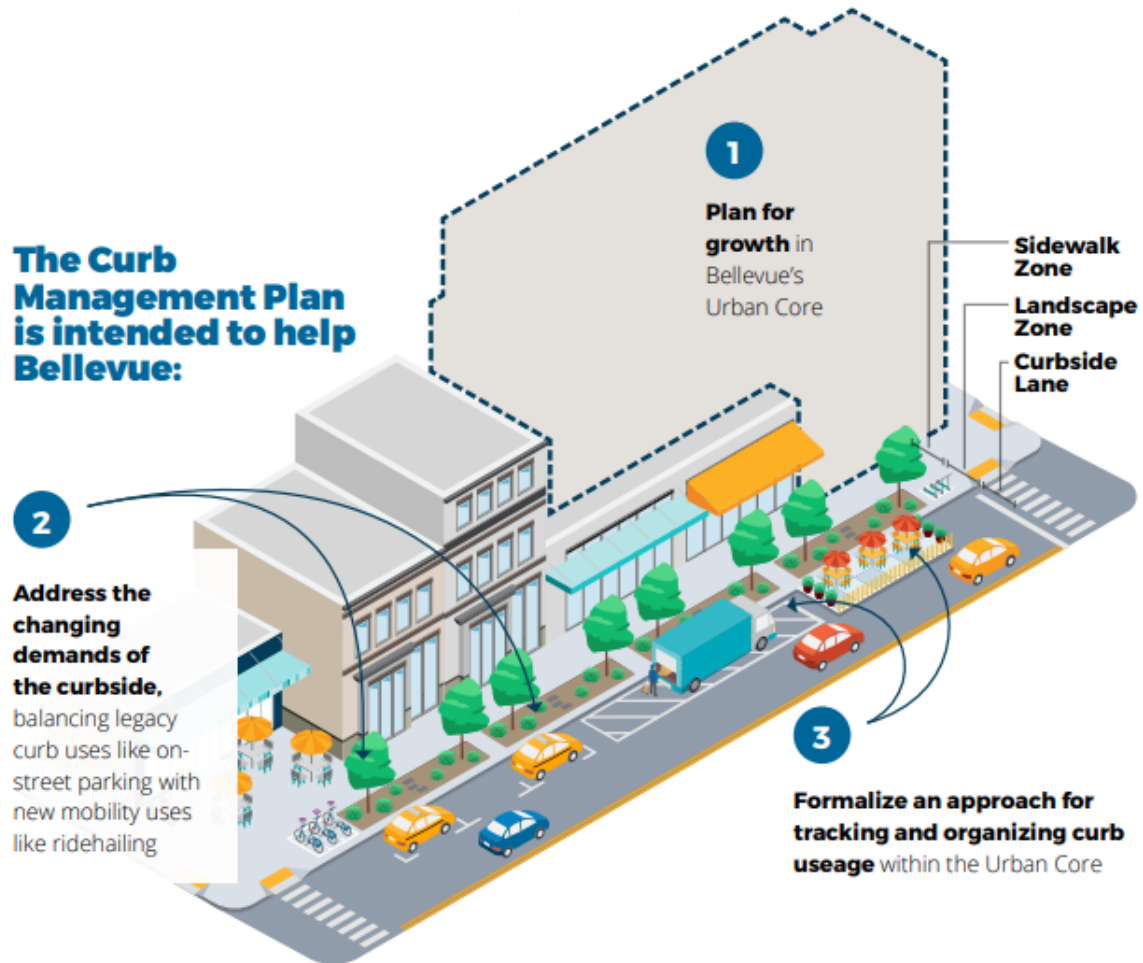
Curb Management Plan

- Executive summary
- **Curb management in Bellevue**
 - State of the curb, public engagement, and comp. plan policies
- **Curb supply and demand**
 - Curb typology
 - Pricing and demand management recommendations
- **Curb Practices Guide**
 - Summary-level recommendations
- **Curb Pilot Roadmap**
- **Looking forward**

Curb management in Bellevue

- Definition of curb and curb management
- Key findings from state of the curb (*note: full doc included as appendix*)
 - Current approaches
 - How the curb is used today in Bellevue
- Summary and themes from initial public engagement
- Recap of comp. plan policies (*adopted Dec. 2022*)

Current Approaches



Existing Challenges

- Operations
 - Decisions are made ad-hoc.
- Permitting & Pricing
 - Fee structures are inconsistent and inequitable.
- Enforcement
 - Resources are very limited, resulting in unsafe conditions.
- Roles & Responsibilities
 - Decisions are divided among many teams and departments.

What does the CMP include?

Curb Management Plan

- Executive summary
- Curb management in Bellevue
 - State of the curb, public engagement, and comp. plan policies
- ▶ **Curb supply and demand**
 - Curb typology
 - Pricing and demand management recommendations
- Curb Practices Guide
 - Summary-level recommendations
- Curb Pilot Roadmap
- Looking forward

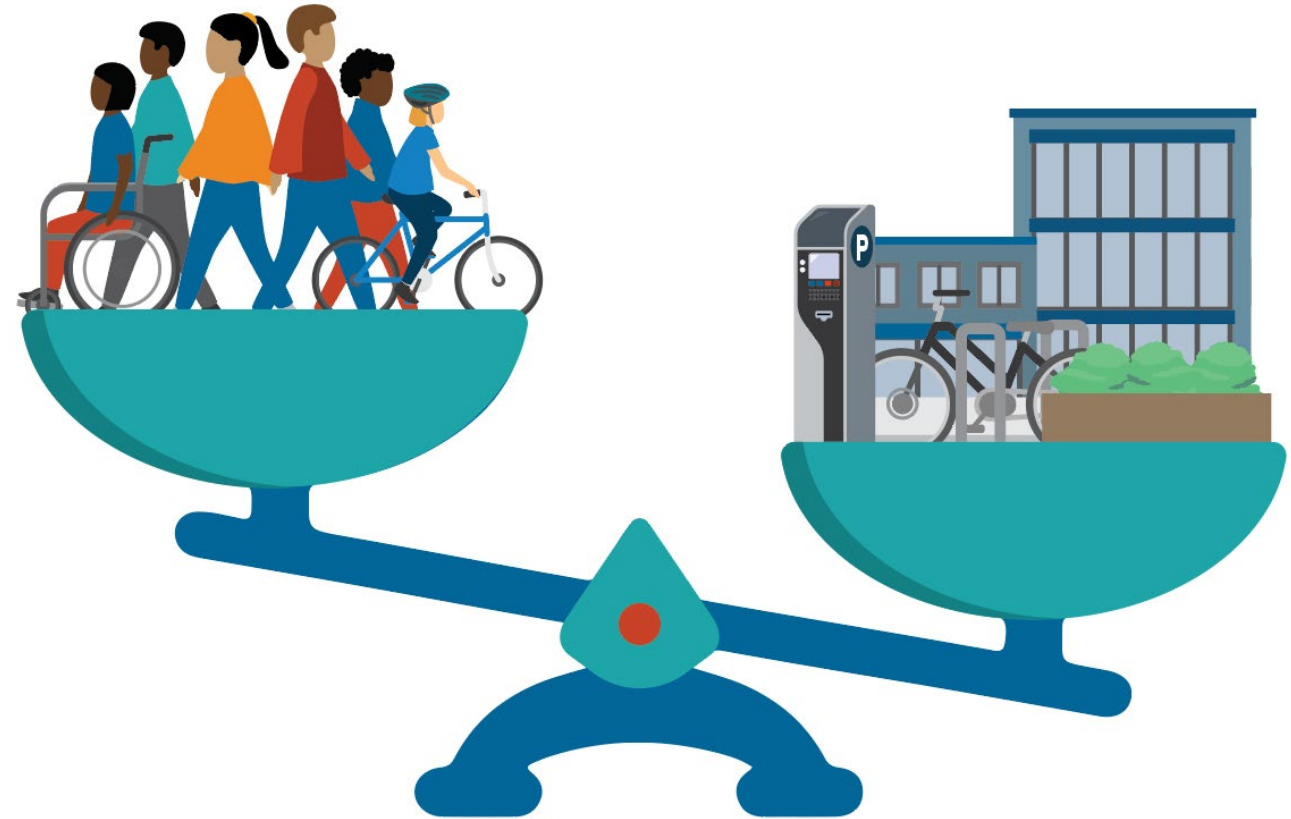
Curb supply and demand

- Supply:
 - Curb typology Overview
 - Curb typology maps (existing, future, and conflicts; interactive web map will also be available later on)
- Demand:
 - Curb and parking utilization in Bellevue
 - Pricing and demand management concepts and recommendations

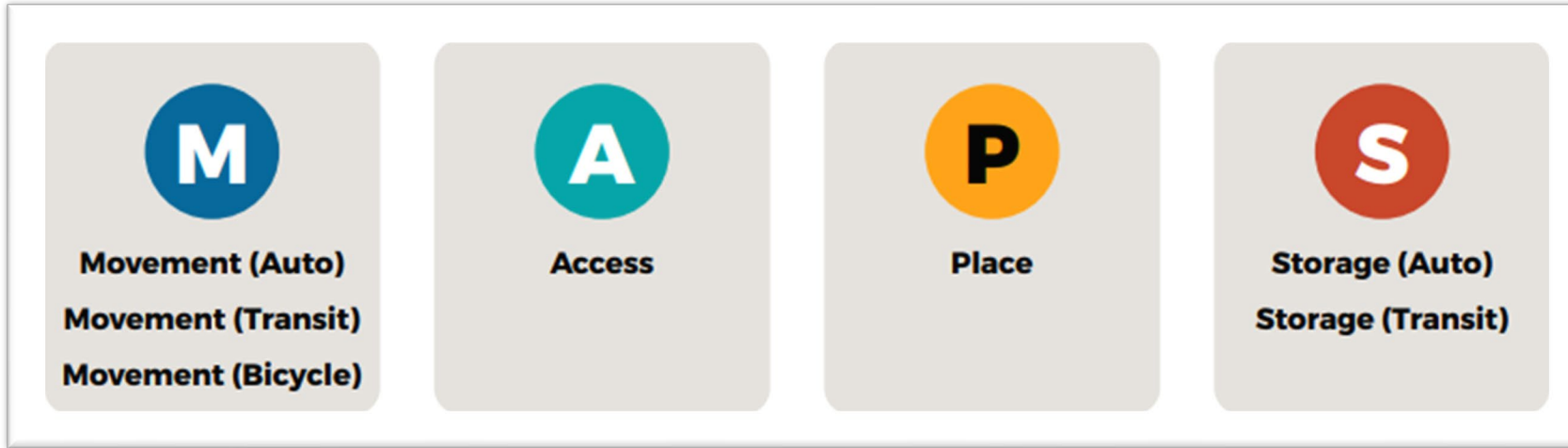
What does the CMP include?

Curb supply and demand

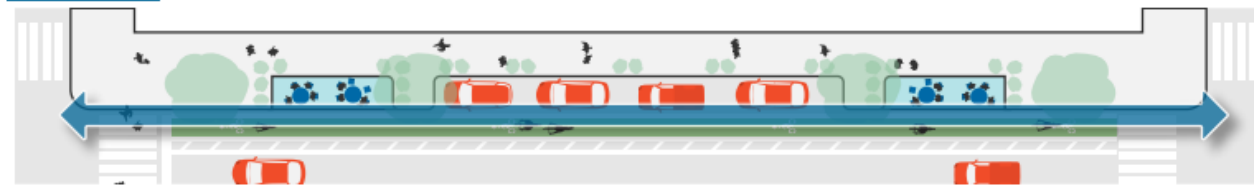
- Curb Supply:
 - The **curb typology** addresses the supply side of curb management
- Curb Demand
 - The **curb pricing framework** will address the demand side of curb management



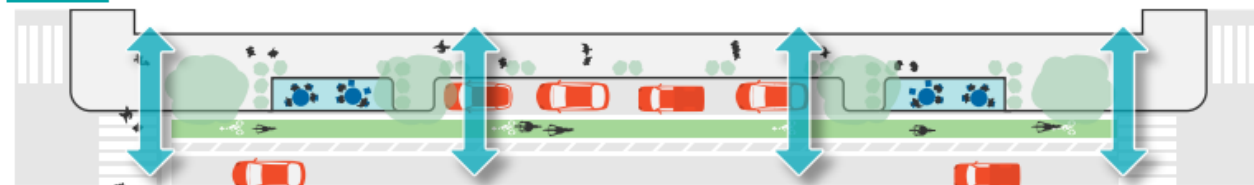
Curb Typology



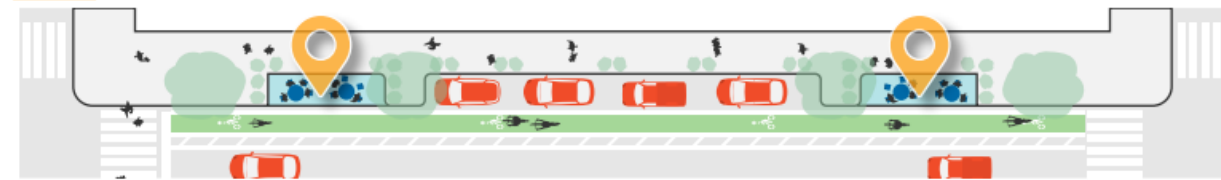
Movement: How people move along the length of the curb



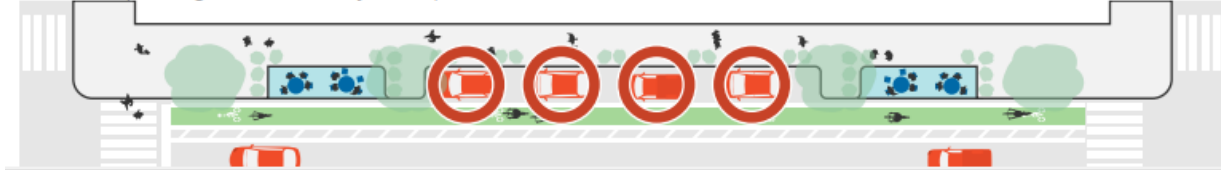
Access: How, when, and where people access adjacent destinations, such as shops, residences, or offices



Place: What types of activities and uses are happening within the curbside area, such as food vending and parklets



Storage: How the curbside area provides space for longer-term vehicle storage (i.e., 2+ hour parking), bicycle parking, and transit layover space



What does the CMP include?

Curb Management Plan

- Executive summary
- Curb management in Bellevue
 - State of the curb, public engagement, and comp. plan policies
- Curb supply and demand
 - Curb typology
 - Pricing and demand management recommendations
- ▶ **Curb Practices Guide**
 - Summary-level recommendations
- Curb Pilot Roadmap
- Looking forward

Curb practices guide

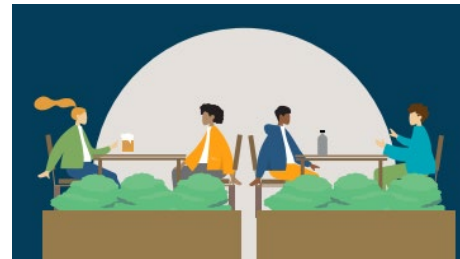
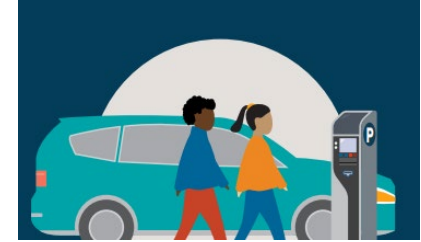
- Summary of 28 curb practice recommendations, across 6 categories:



Curbside Practices: Next Steps

Near-term priorities identified:

- Add resources for curbside enforcement
- Perform implementation study for paid parking program
- Build and expand accessible parking (ADA) inventory
- Create more passenger & commercial loading zones
- Expand curbside placemaking (i.e. on-street dining)



What does the CMP include?

Curb Management Plan

- Executive summary
- Curb management in Bellevue
 - State of the curb, public engagement, and comp. plan policies
- Curb supply and demand
 - Curb typology
 - Pricing and demand management recommendations
- Curb Practices Guide
 - Summary-level recommendations
- **Curb Pilot Roadmap**
- Looking forward

Curb Pilot Roadmap

- Pilot project concepts to address present day curb challenges
- Detailed implementation strategies, considerations, staffing requirements, and guidance for 6 curb pilot ideas



What does the CMP include?

Curb Management Plan

- Executive summary
 - Curb management in Bellevue
 - State of the curb, public engagement, and comp. plan policies
 - Curb supply and demand
 - Curb typology
 - Pricing and demand management recommendations
 - Curb Practices Guide
 - Summary-level recommendations
 - Curb Pilot Roadmap
- Looking forward**

Looking forward

- Equity + curb management
- Staffing considerations
- Implementation guidance: delivering curb practices and pilot programs

Feedback Heard So Far

- Feedback heard from:
 - Bellevue Downtown Association
 - Bellevue Chamber
 - Bellevue Diversity Advisory Network
 - Residents
 - Retail & local businesses
 - Regional employers



Closing Thoughts

- **The curb environment is a rapidly evolving space.**
 - Strategies that work today may not work in 5-10 years.
 - New ideas and approaches will appear regularly.
- **Continued data collection and public feedback will be crucial.**
 - As travel patterns evolve, so will curb behaviors.
 - Bellevue will actively monitor as the mobility and land use environment changes.
- **Curb Management is not a zero-sum strategy.**
 - It will be important to remain flexible as time goes forward.

2

NEXT STEPS

Next steps for the CMP

- **Spring 2023:**
 - TR Commission provides final recommendation on CMP
 - May 25 (tomorrow)
- **Later in 2023:**
 - Council considers the TR Commission recommendation of CMP





Thank You

Chris Iverson | *City of Bellevue*

