



Sustainable Bellevue Plan Update

Phase II: Draft Strategies

Thara Johnson, Planning Director
Colin Munson, Climate & E-Mobility
Coordinator
June 25, 2025

Information & Discussion Only

Agenda

1. Objectives
2. Context & Timeline Update
3. Engagement to Date
4. Strategy Development
5. Draft Strategies
6. Discussion
7. Next Steps



Objectives

- Provide update to overall plan update process
- Share results from stakeholder engagement
- Receive feedback on draft actions



Context & Timeline Update

Sustainable Bellevue Plan Context

- Current Plan adopted by Council December 14, 2020
- Set to be updated every five years
- 2030 and 2050 Goals and Targets for community-wide actions
- Strategies and actions in six focus areas



ENERGY &
BUILDINGS



MOBILITY &
LAND USE



MATERIALS
& WASTE
MANAGEMENT



CLIMATE
CHANGE

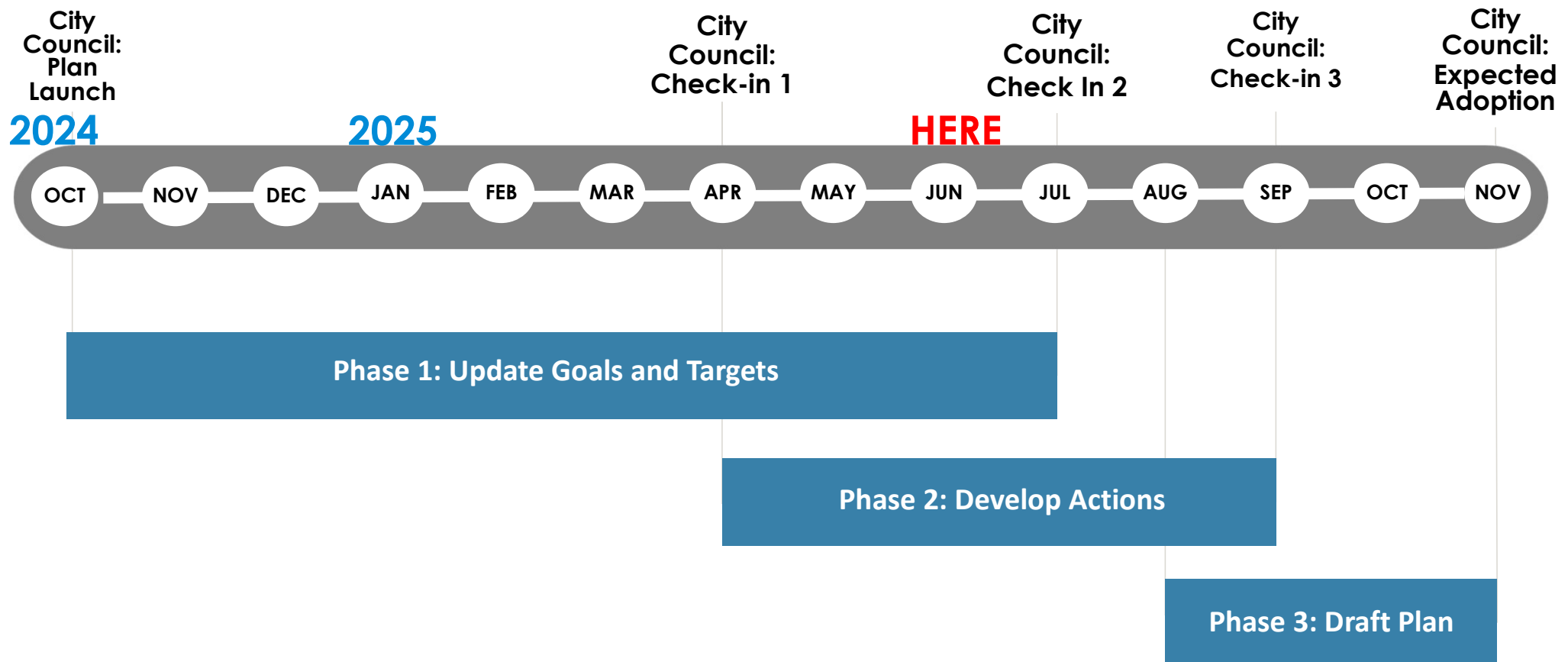


NATURAL
SYSTEMS



MUNICIPAL
OPERATIONS

Plan Update Timeline



Sustainable Bellevue Goals

ENERGY & BUILDINGS

- Transition to 100% Renewable Energy
- Reduce Overall Energy Use

MOBILITY & LAND USE

- Encourage Sustainable Commutes
- Reduce Vehicle Trips
- Locate Jobs and Housing Near Transit
- Transition to 100% Electric Vehicles

NATURAL SYSTEMS

- Realize "City in a Park" Vision
- Promote Healthy Streams
- Conserve Water

CLIMATE CHANGE

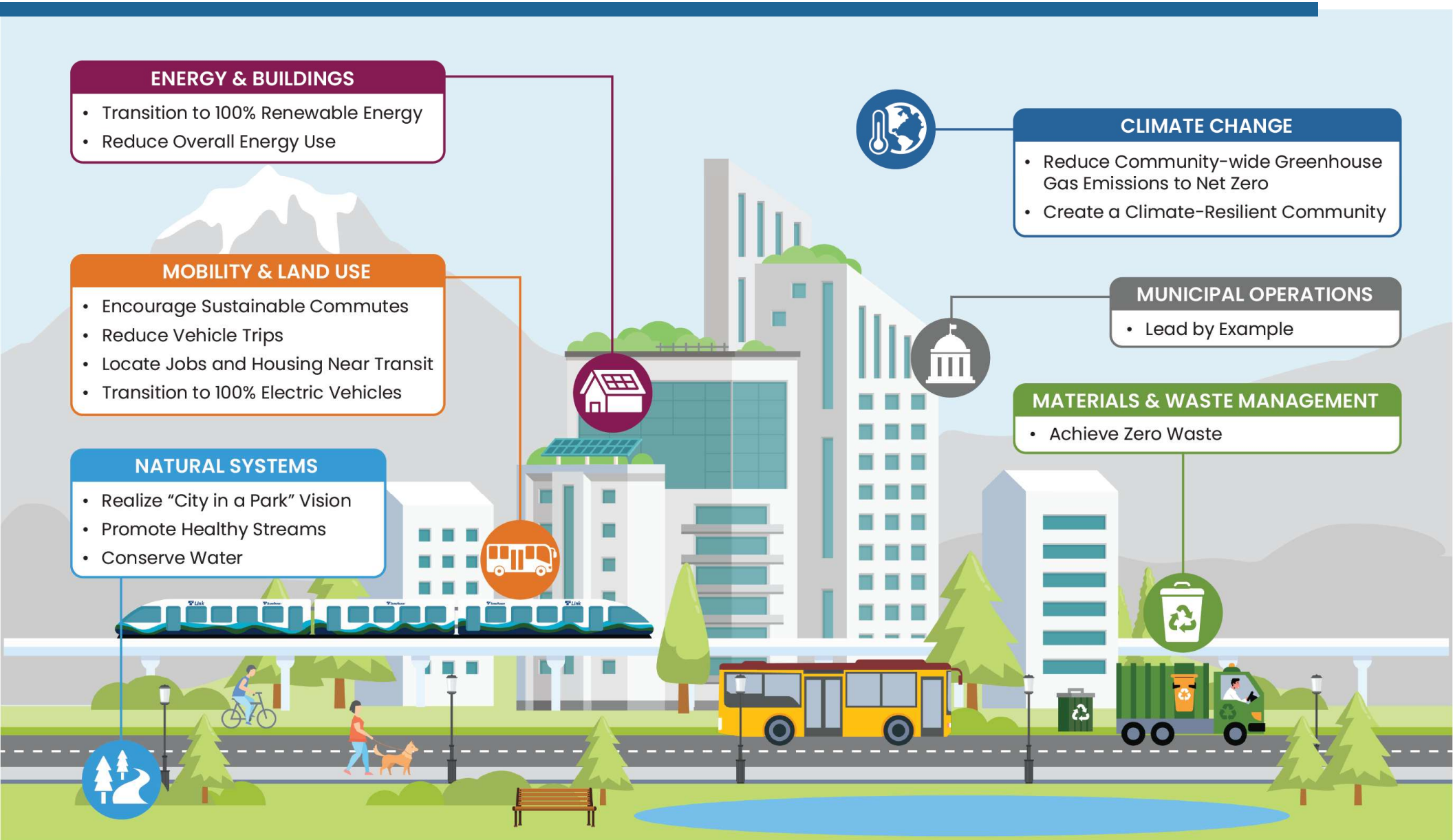
- Reduce Community-wide Greenhouse Gas Emissions to Net Zero
- Create a Climate-Resilient Community

MUNICIPAL OPERATIONS

- Lead by Example

MATERIALS & WASTE MANAGEMENT

- Achieve Zero Waste

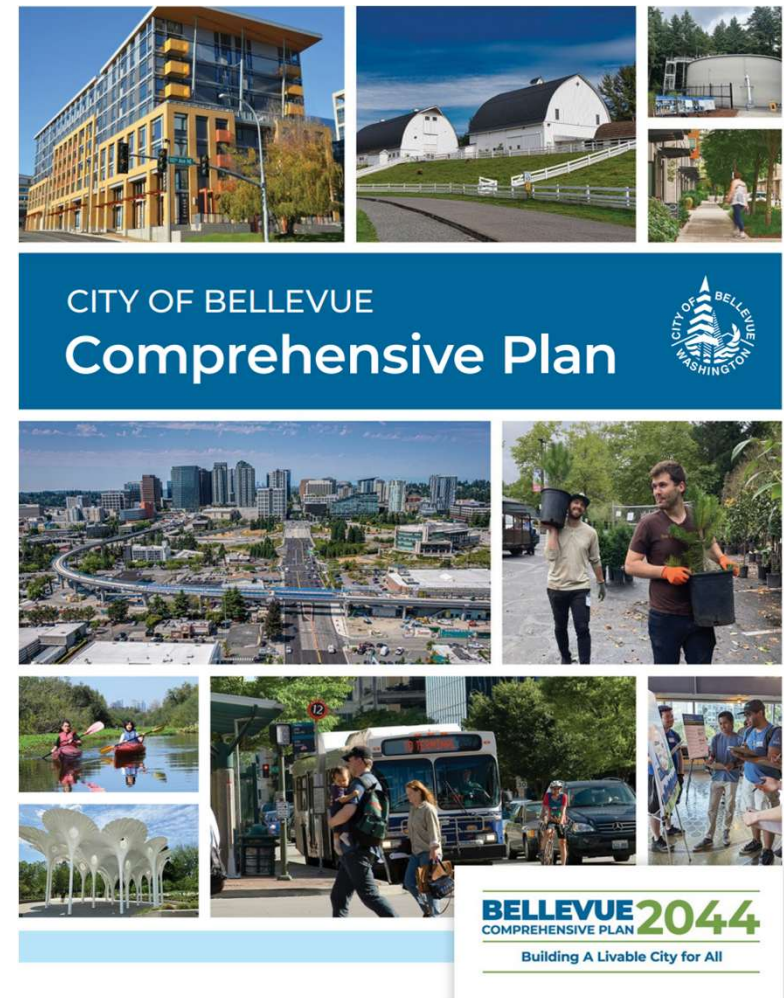


Comprehensive Plan Context

Comprehensive Plan adopted targets:

- 50% GHG reduction by 2030;
- 100% GHG reduction by 1050

New Climate and Environment Element and policies



Engagement to Date

Engagement Overview

- Phase I Engagement Reach:
 - 250+ Bellevue students
 - 110+ participants at in-person workshops or townhalls
 - 50+ community members at pop-up tabling events
 - 470 survey respondents (including 2 in Spanish and 46 in Simplified Chinese)
- Phase II Engagement to date:
 - EarthFest activities
 - Staff SME Workshops
 - Ongoing community engagement on actions



Key Engagement Takeaways

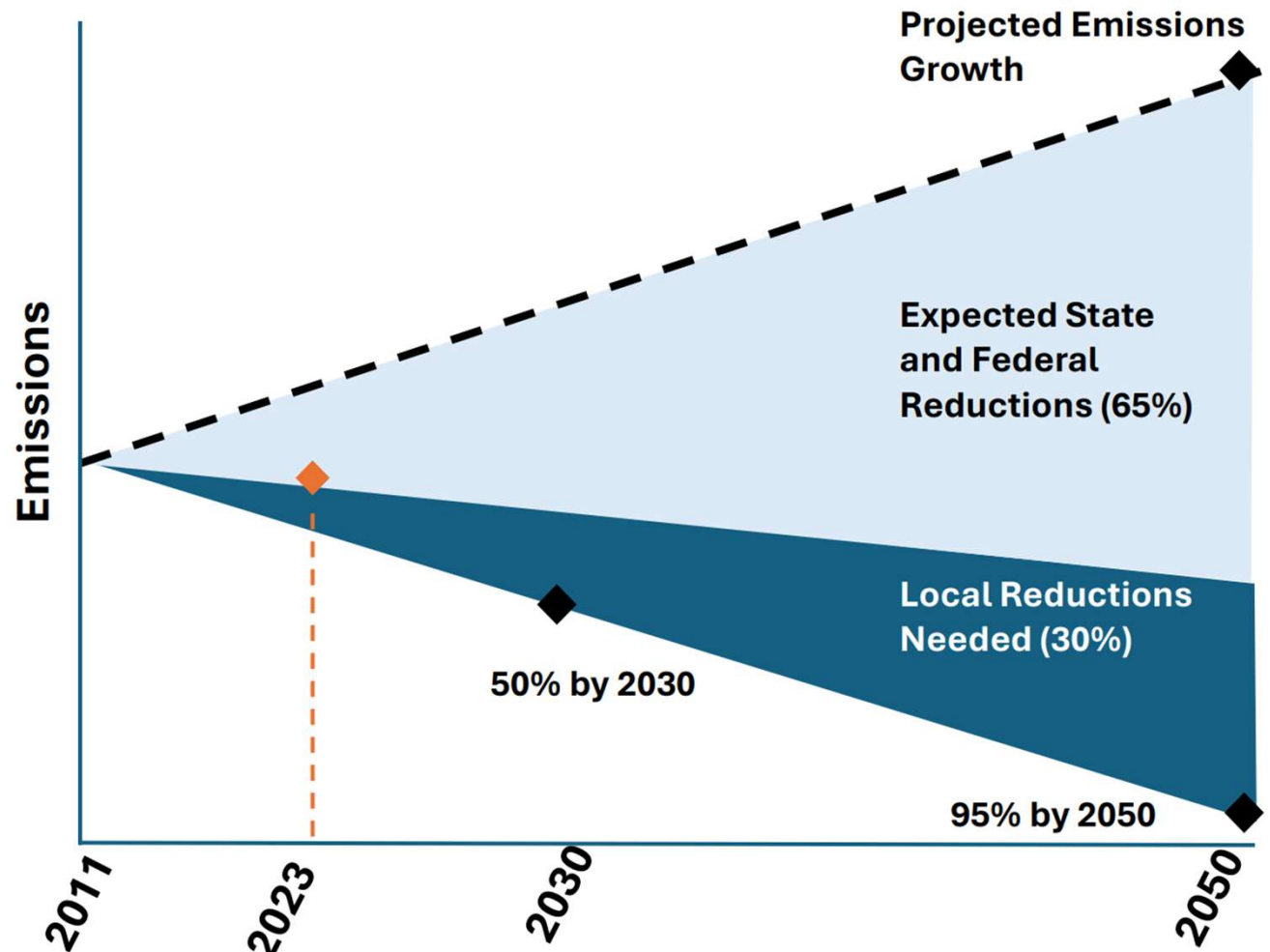
- 81% of Bellevue residents have already experienced climate impacts in Bellevue.
- 68% of respondents think the city should prioritize environmental initiatives even if they require significant investment.



Strategy Development

High Impact Context

- Approximately 30% of emissions reductions must come from local action



Three Tiers of Strategies

To manage Bellevue's contribution to climate change (mitigation) and build resilience to its impacts (adaptation), Bellevue will pursue the following types of high-impact strategies.

- **Priority Strategies**

- These strategies and their associated actions have the potential to rapidly reduce GHG emissions to meet Bellevue's 50% reduction target.

- **Catalyst Strategies**

- These strategies and their associated actions have the potential to lay a foundation to reduce GHG emissions to meet Bellevue's 2050 target.

- **Resilience Strategies**

- These strategies and their associated actions have the potential to meaningfully enhance the resilience of community members, infrastructure, and natural systems to climate hazards.

Draft Strategies

Draft Strategies: Climate Change

Resilience Strategy	<i>Community Resilience:</i> Enhance the Bellevue community's resilience to climate hazards, particularly extreme heat and smoke, to protect community safety, health, and quality of life.
Resilience Strategy	<i>Resilient Infrastructure:</i> Ensure Bellevue's infrastructure is resilient to climate hazards, particularly extreme heat and flooding, to protect assets, services, and people.
Resilience Strategy	<i>Air Quality.</i> Mitigate impacts of air pollution on development and sensitive uses adjacent to freeways to promote healthy, sustainable growth.



Draft Strategies: Buildings & Energy

Priority Strategy	<i>Green Building.</i> Facilitate green building construction with incentives and technical assistance to drive efficient, electric buildings that promote health, resilience against hazards, and alignment with Bellevue's emissions targets.
--------------------------	--



Draft Strategies: Mobility & Land Use

Priority Strategy	Mobility Options. Increase sustainable commutes and active transportation modes to reduce vehicle miles travelled.
Priority Strategy	Electric Vehicles. Support a rapid transition to electric vehicles and electrified transportation to reduce emissions when vehicle trips are taken.
Catalyst Strategy	Accessibility and Connectivity. Expand access to transit, and bicycle, and pedestrian facilities to build infrastructure for future of sustainable transportation
Catalyst Strategy	Sustainable Land Use. Facilitate sustainable development to meet climate targets through increased density and livability.



Discussion

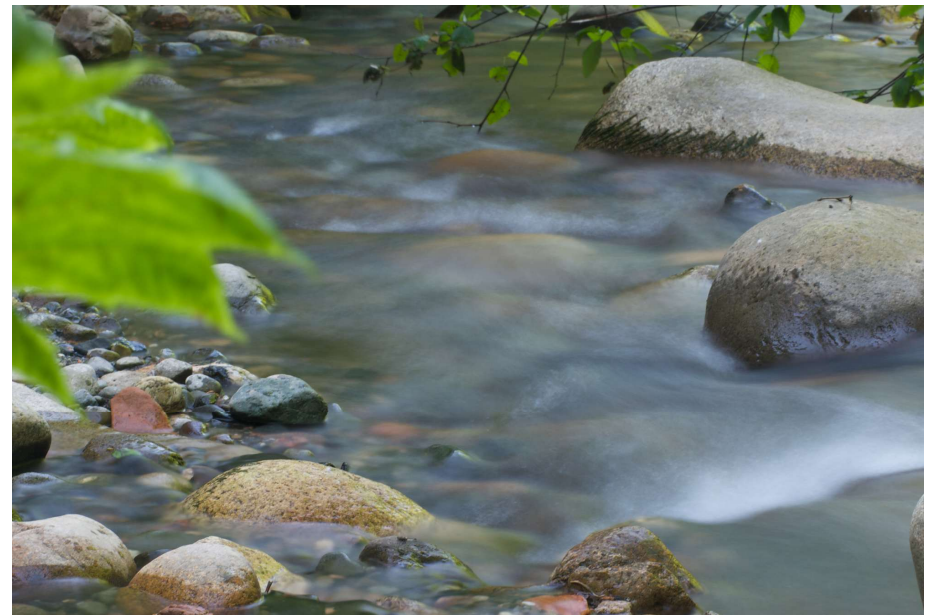
Discussion

- Does the Commission have feedback on the draft actions related to and resilience and land use?
- What other community interests or concerns are you aware of related to addressing climate change and preparing for climate impacts?
- How could this work advance Planning Commission-related priorities, investments, and actions? How could climate or sustainability considerations be incorporated into other plans and projects the Planning Commission reviews?



Next Steps

- **City Council: 7/22**
- **Public Comment on Draft Plan:**
Early August
- **Expected Adoption: November**



Thank You

Colin Munson
Climate & E-Mobility Coordinator
cmunson@bellevuewa.gov