



# Great Neighborhoods Program: Eastgate and Factoria

Request to initiate Comprehensive Plan Amendments

Thara Johnson, Planning Director  
Justin Panganiban, Senior Planner/Urban Designer

August 4, 2025



City of Bellevue



# Direction

Consider directing staff to initiate Comprehensive Plan Amendments to update the Eastgate and Factoria neighborhood area plans and confirm future program iterations.



# Agenda

1. Background
2. Neighborhood Planning Process
3. Scope Elements
4. Community Engagement
5. Recommendation



# Program Objectives

1. Localize **citywide policies** that reflect **neighborhood priorities** through extensive **community engagement**
2. Develop **local policies** to address **issues and opportunities** to help the community **grow in a unique way**

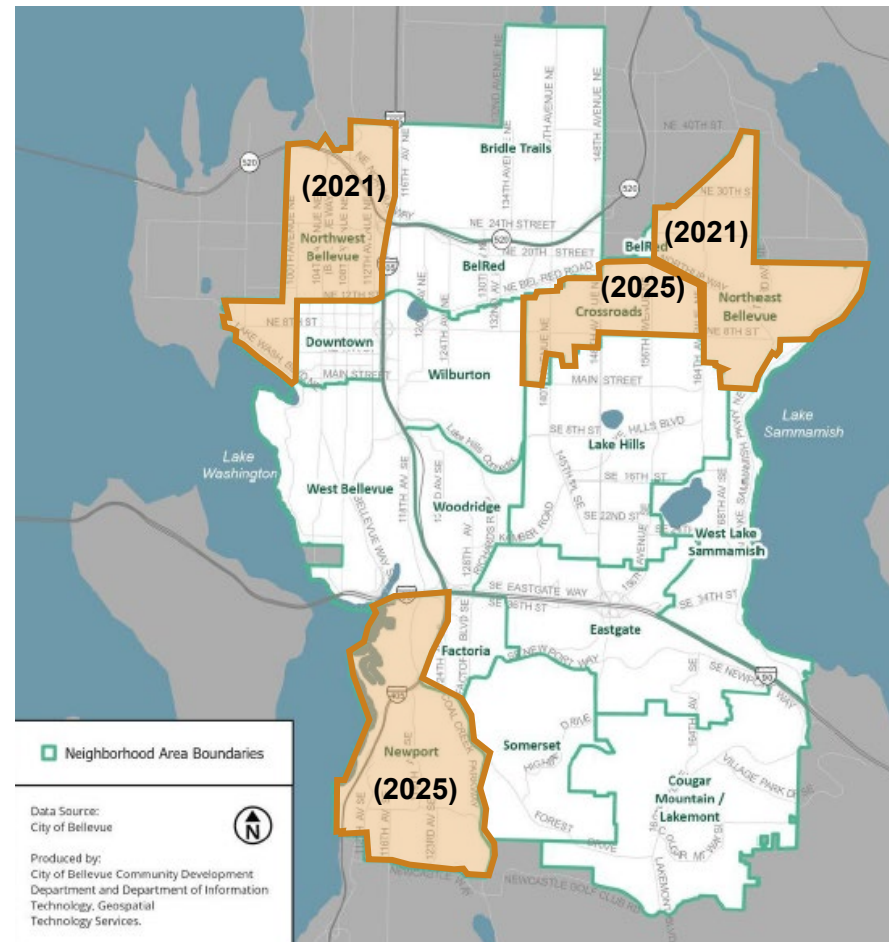


# Background

## Bellevue's Neighborhoods:

- 16 neighborhood areas
- Diverse and vibrant communities with unique identities

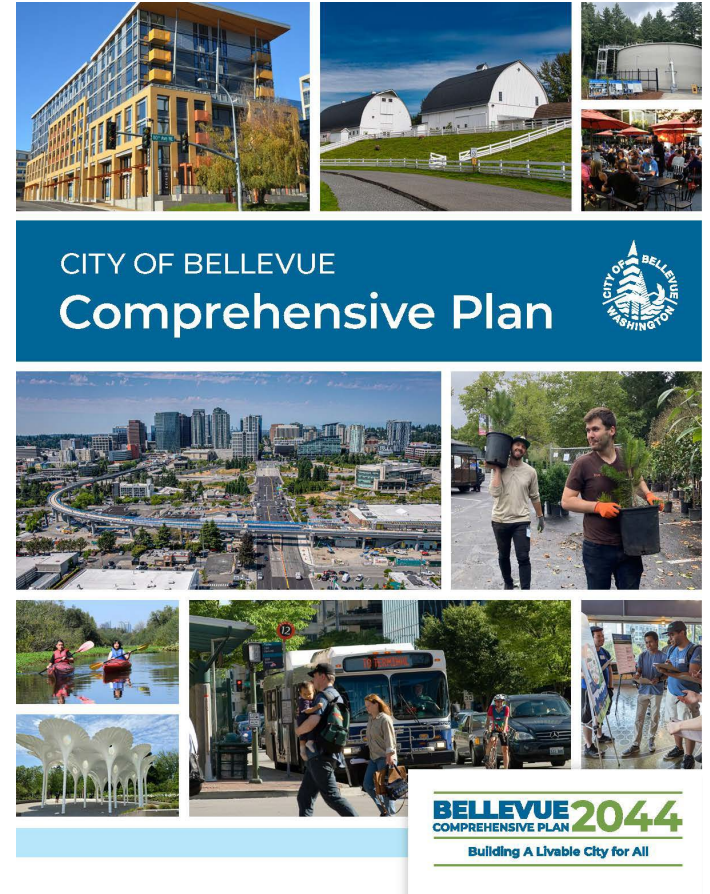
**Program Launch:**  
Initiated in 2018 to  
strengthen community  
connections





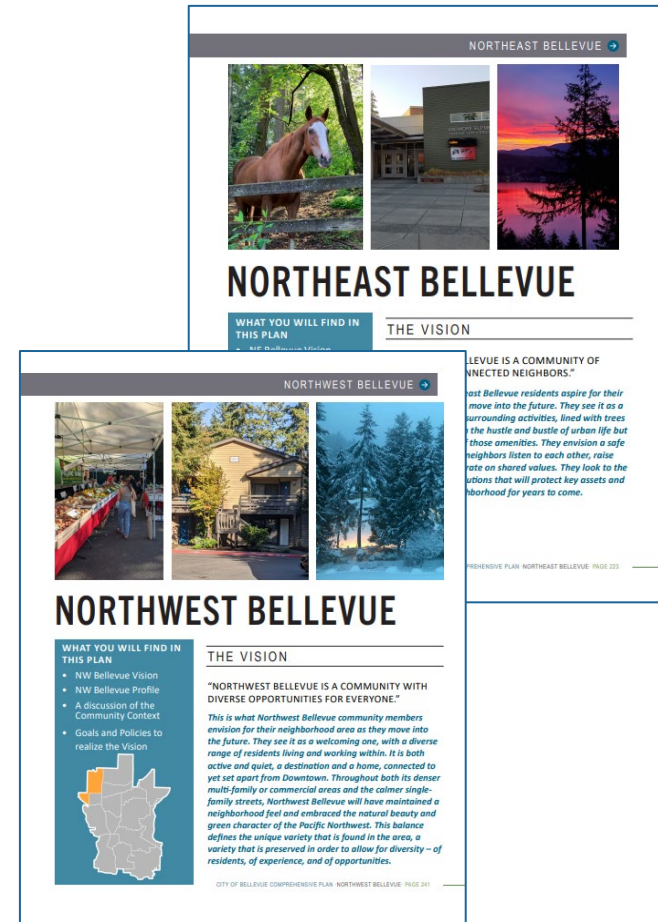
# Comprehensive Plan Periodic Update

- **Two Volumes:**
  - Volume 1: Citywide policies
  - Volume 2: Neighborhood-specific goals and policies
- **Impact:** Updates aligned neighborhood plans with citywide policies

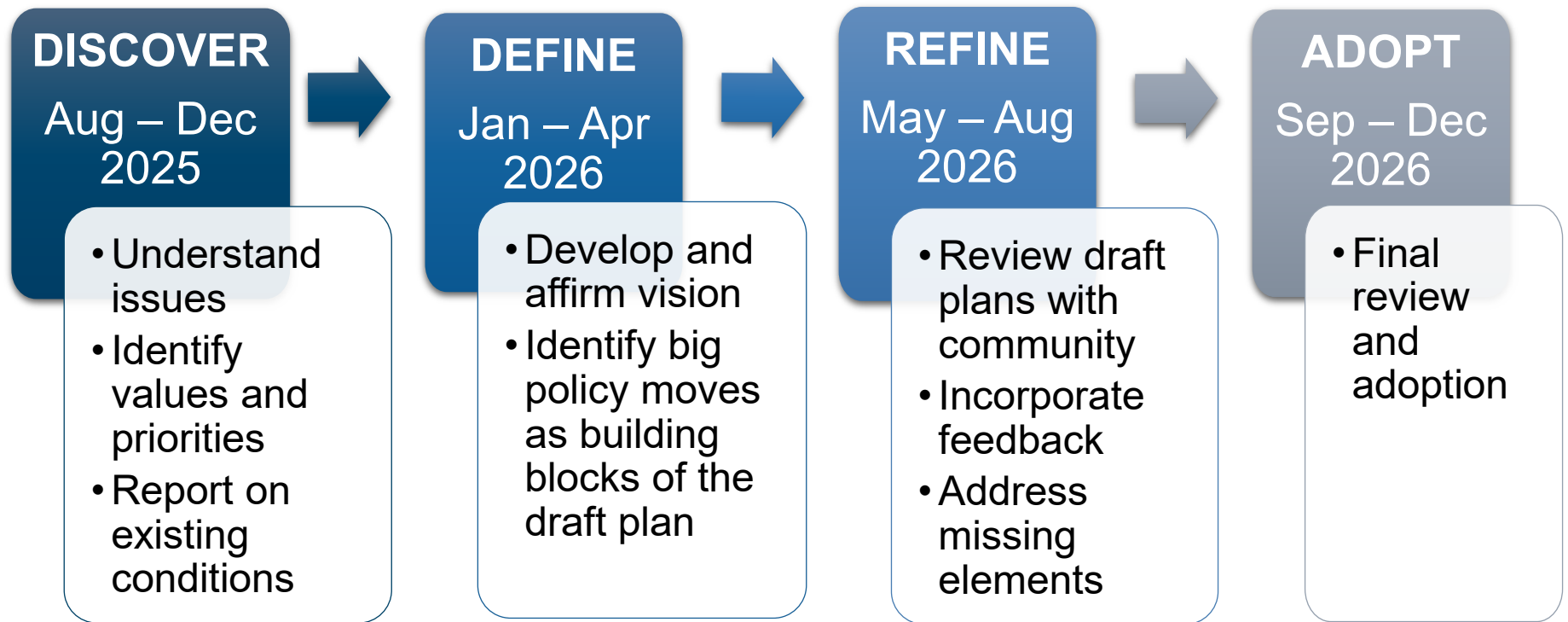


# Progress to Date

- **Completed Plans:** Northeast and Northwest Bellevue adopted in 2021
- **Ongoing Plans:** Crossroads and Newport considered by Council in fall
- **Continuous Improvement:**
  - Land use changes
  - Urban design framework
  - Community engagement

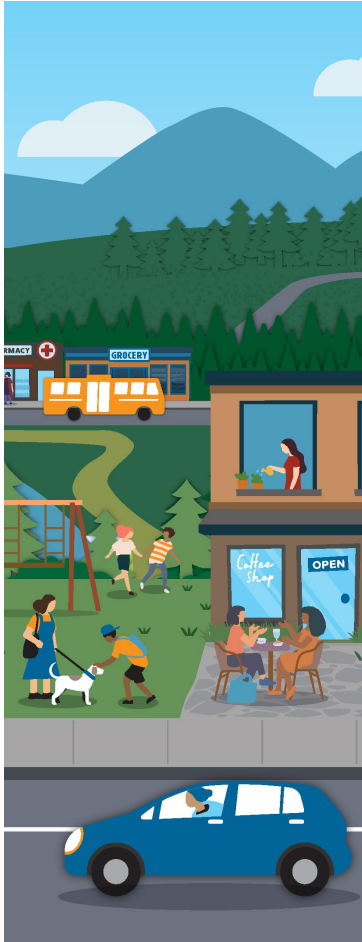


# Neighborhood Planning Process





# Neighborhood Area Plan Scope



## Neighborhood Area Plan Update

Conduct full update of **neighborhood area (subarea) plan and policies** to be consistent with neighborhood area boundaries and citywide policies

## Urban Design

Establish **design strategies** to improve the design and function of public spaces throughout the neighborhood

## Land Use

Set the direction of future growth through **future land use map** updates for privately-owned sites and publicly-owned property



# Plan Subsections



## Neighborhood Identity

Identify and strengthen a neighborhood's unique elements



## Mixed Use Centers & Neighborhood Centers

Strengthen centers that provide for amenities, services, housing



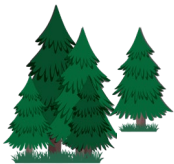
## Community Gathering Spaces

Strengthen spaces for community events and gathering



## Mobility and Access

Improve access to mobility options and local connections

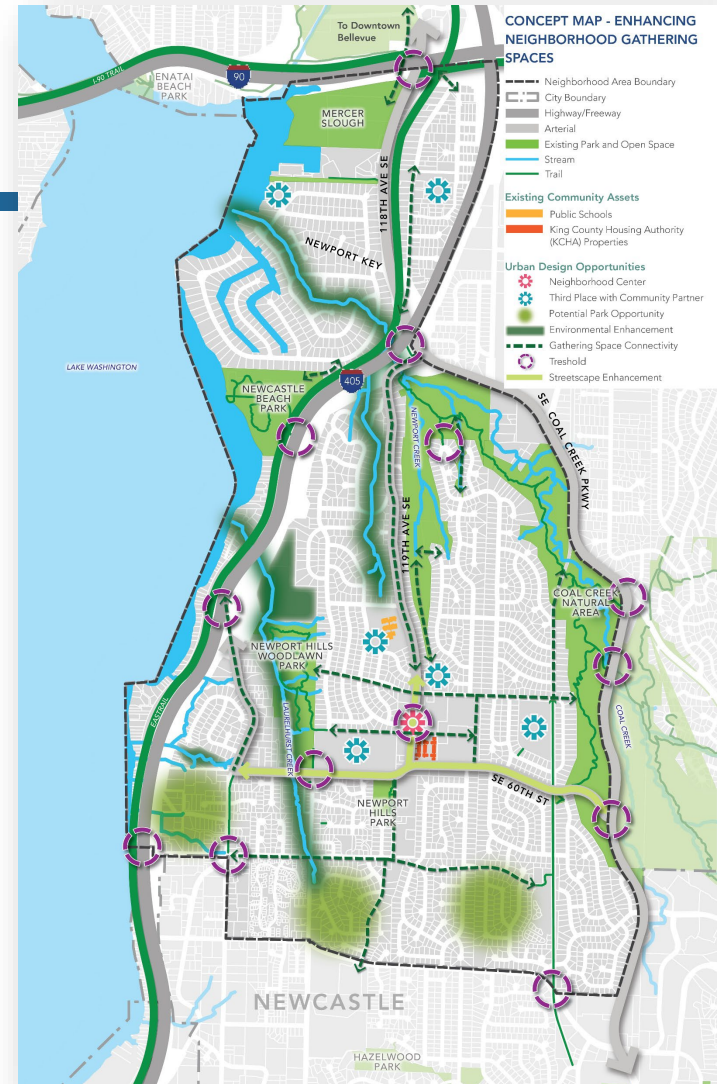


## Environment

Improve qualities of natural features

# Urban Design

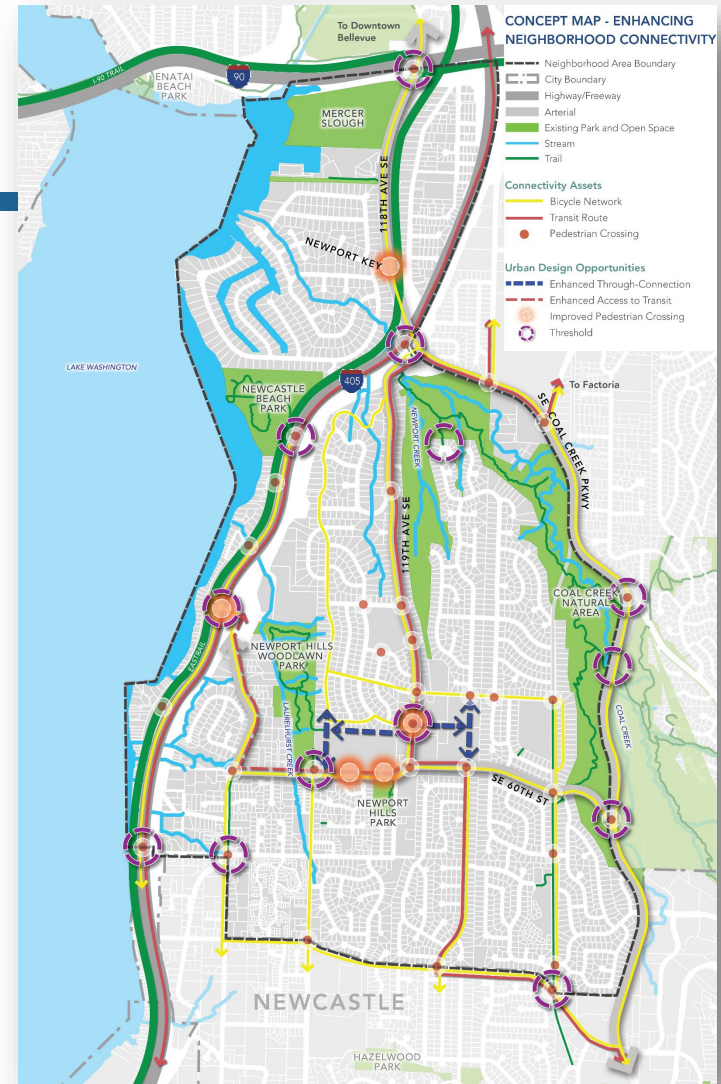
- Strategies to improve design and function of public spaces
- Concept maps that identify new and enhanced opportunities for **gathering spaces**:
  - Community partnerships
  - Neighborhood-scale parks
  - Environmental enhancements
  - Pedestrian connections between gathering spaces
  - Streetscape enhancements



Concept Map – Enhancing Neighborhood Gathering Spaces in Newport

# Urban Design (II)

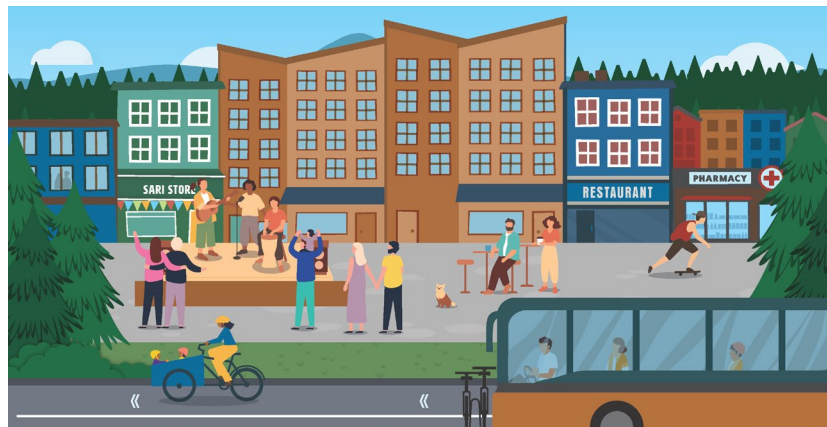
- Concept maps that identify new and enhanced opportunities for **neighborhood connectivity**:
  - Walking and biking connections
  - Sidewalks and pedestrian crossings
  - Bike facilities
  - Access to transit
  - Wayfinding signs



Concept Map – Enhancing Neighborhood Connectivity in Newport

# Land Use

- Guide future growth through Future Land Use Map updates
- City may initiate map changes based on changed conditions
- City may include site-specific map changes initiated by property owners:
  - Private property that could function as Third Places
  - Public property



**Third places:** Places outside of home and work where people can connect and build community. They can be a privately owned or public space, as long as they are safe and welcoming.



# Community Engagement Strategy

**Approach:** Equitable, consistent, and inclusive engagement to ensure representative participation

**Example strategies:**

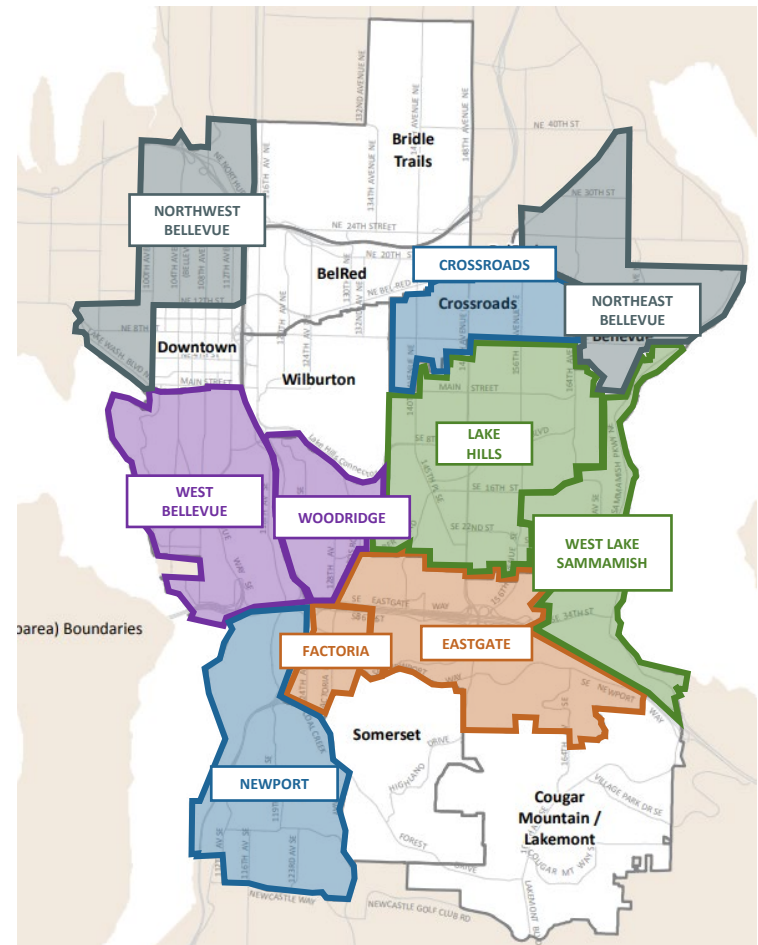
- In-person and online engagement tools
- Targeted outreach
- Interactive, accessible, and fun engagement activities





# Plan Sequence

- **2025/2026:** Eastgate and Factoria
- **2026/2027:** Lake Hills and West Lake Sammamish
- **Future Iterations:**
  - **2027/2028:** Woodridge and West Bellevue





# Direction

Consider directing staff to initiate Comprehensive Plan Amendments to update the Eastgate and Factoria neighborhood area plans and confirm future program iterations.

