

ARTISTS

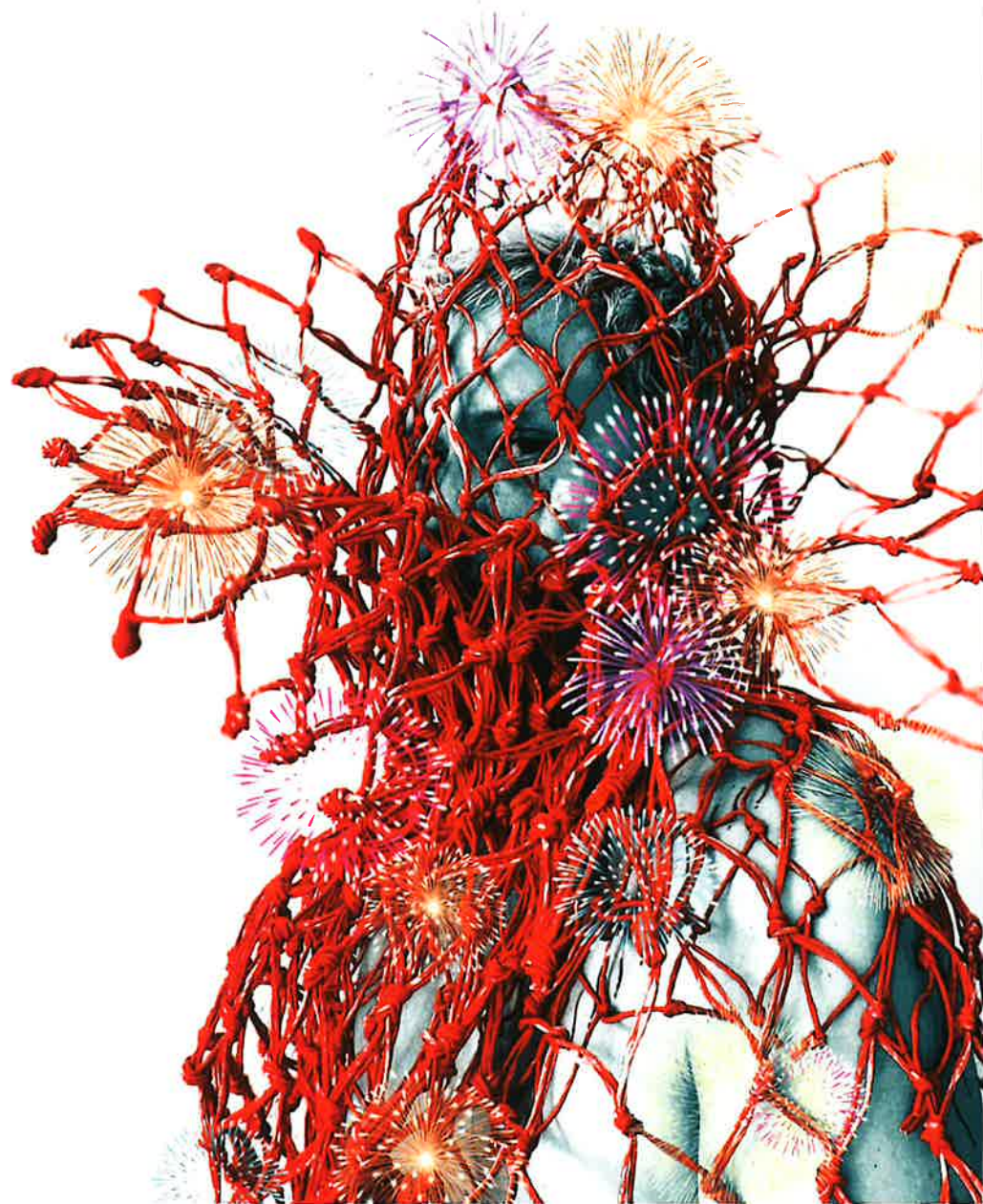
*Nadine Arpin
Jordanna George
Beyon Wren Moor
Roldy Aguero Ablao
Kali Spitzer
Jamie John
Noa Dettweiler-Pavia
Valentine Cortes
Kajsa Cottier
Viola LeBeau
Ashley Frantz
Winter E.R. Brown
Brandi Douglas
Eileen Jimenez*

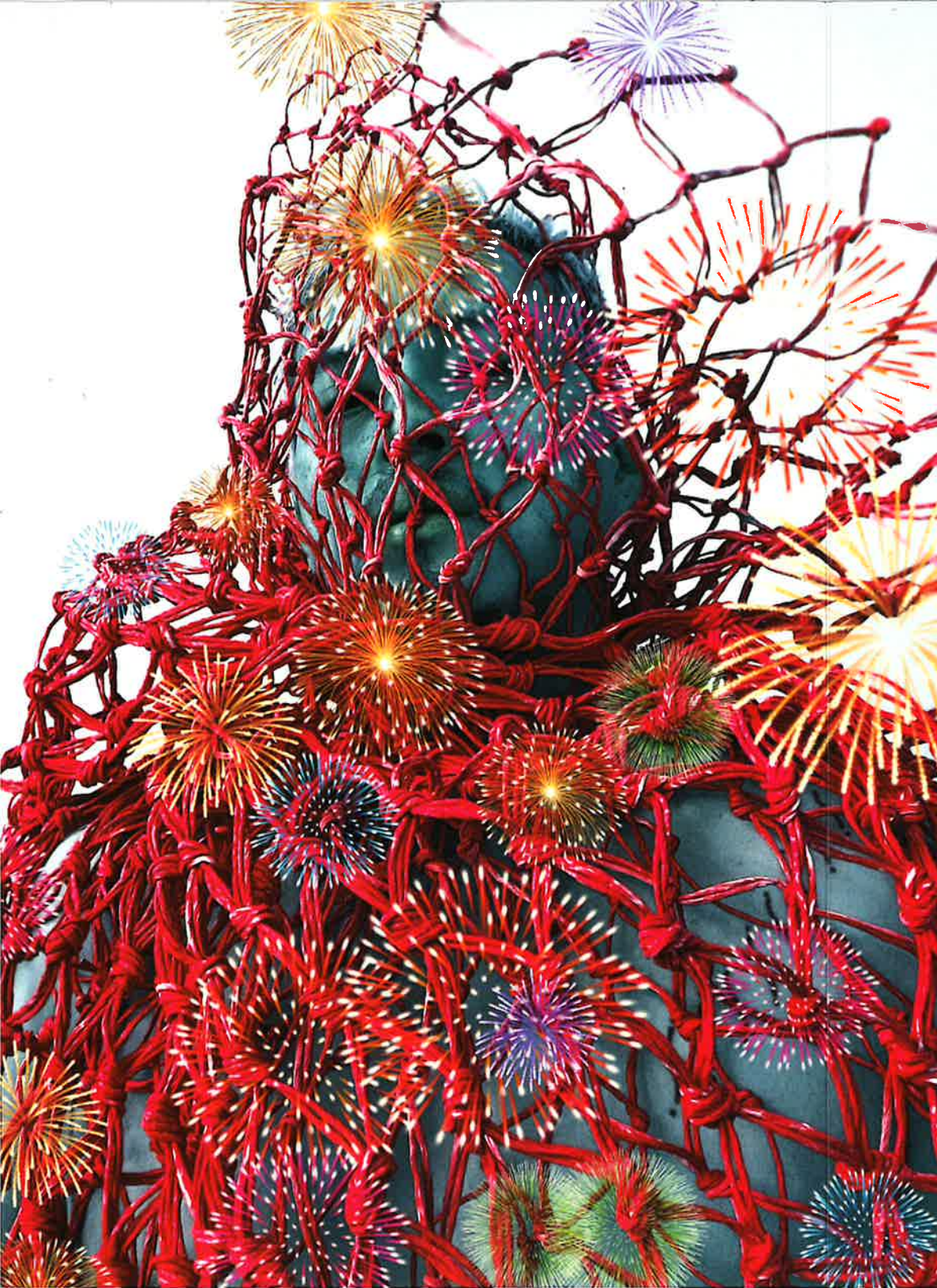


TIDELANDS

55 Univeristy Street • Seattle • Wa • 98101
Open Wednesday - Sunday 11am - 5pm
Thisistidelands.com • 206-453-1011

Presenting at
TIDELANDS





INDIGIQUEER

A group exhibition featuring 14 Indigenous artists exploring the vibrant intersections of Indigeneity and Queerness. Through a range of mediums—both contemporary and traditional—these artists reflect on identity, embodiment, and the deep connections between self, body, land, and place.

Opening Reception

First Friday

June 6, 2025

Doors at 5pm

Blessing & Remarks at 6pm

Light Refreshments Served

55 University Street | Seattle | 98101

RSVP at

THISISTIDELANDS.COM



Please Join Us

For The Closing Reception Of:

Project 562: Changing The Way We See Native America: a sweeping visual narrative of contemporary Native identity by Matika Wilbur (Swinomish and Tulalip). This powerful series features portraits and stories from hundreds of Tribal Nations across the country. As Tidelands' inaugural exhibition comes to a close, join us for a special evening featuring a closing artist talk by Matika Wilbur. Doors at 4pm, talk begins at 6pm.

Saturday | May 31, 2025 | 4-7pm



TIDELANDS

55 University Street • Seattle • Wa • 98101
Open Wednesday - Sunday 11am - 5pm
Thisistidelands.com • 206-453-1011

37TH ANNUAL INTERNATIONAL STONE CARVING SYMPOSIUM JULY 12-20TH AT PILGRIM FIRS CAMP IN PORT ORCHARD, WA

THE SYMPOSIUM

We invite you to join us at Camp Pilgrim Firs for eight days of stone-centered activities and carving with your fellow stone enthusiasts. Bring yourself, your creative energy, your tools, and a favorite rock (or four!). If you're new to this whole thing and don't have stone or tools, we have the Dojo set up for beginners with everything you need to start.

The Campground provides cabins and lodges that are connected by walking paths through the forested grounds and three full meals a day, so you'll have the freedom to delve into carving and developing growing friendships. Evenings are filled with slideshows, informational talks, a riot of a fundraising auction, a music-filled dance party, campfires and even nighttime swims in the lake. Stone and tools (and massages for those tired muscles) are available for purchase from our vendors.

ACCOMMODATIONS

The Camp has a lodge with a shared common area and bathrooms; it features multiple dorm-style rooms that sleep 2-4 people each. There are also 11 duplex-style cabins with private decks that sleep 3 per side. For those who like to commune more closely with nature, limited space is available for tents or trailers. No pets are allowed during the week.

SCULPTURE WALK ON THE MEADOW JULY 19TH



Our Saturday afternoon outdoor art gallery is a perfect opportunity to show your work in a supportive and appreciative environment. We encourage everyone to bring up to two finished pieces to display and to invite your friends! Bring pedestals if you have them. Works in progress and additional smaller items are welcome too.

GUEST ARTISTS AND WORKSHOPS

Beginning Stone Carving - Tamara Buchanan

Our Beginners Workshop provides space, stone, and instruction on carving and safe hand tool usage. We provide a work table in the communal Dojo tent, a piece of limestone, and an extensive tool library with all the things you need to get started on your first sculpture. Your instructor, Tamara, has been sculpting for over 35 years, has won several awards, and is an experienced teacher.

Intermediate Power Tools - Oliver Harwood & Ben Kimura

For those who are somewhat experienced with stone carving and would like to expand their toolset to include air hammers, angle grinders, and die grinders, this workshop is for you. Participants can choose to work in the communal tent or at their own workspaces. We provide access to our extensive tool library and dedicated instruction from Oliver and Ben have many years experience and are both accomplished artists.

GUEST ARTISTS AND WORKSHOPS

A Splash of Color - Cliff Fragua

Cliff will cover the technique of lamination which involves stone cutting and pinning of the stones; Creating figures and anatomy that is assembled, to create full figures, scenarios and dioramas.

From Jemez Pueblo, NM, Cliff is an artist committed to his tribal community. He creates his stone sculptures with the use of traditional stone carving techniques, frequently combining various stones laminated and assembled in works from table top to larger than life in scale.

Cliff's works are in public places around the United States, notably in the permanent collection at the US Statuary Hall, and the Emancipation Hall, US Capitol Building, Washington DC and the Equal Justice Initiative Freedom Monument Sculpture Park in Montgomery, AL.



Vessels in Hard Stone - Senden Blackwood

Senden's workshop "Vessels in Hard Stone" will demonstrate how to accurately hand carve a sphere and the processes for making vessels in hard stone.

Senden (Australia) has been carving abstract sculptures in stone for 25 years. With a predilection for simplicity, and a drive towards harmony, his sculptures are exhaustively worked and often include a juxtaposition of smooth and textured surfaces. His works range in size from monumental to minute and are primarily in hard stone. Senden has attended 4 NWSSA symposia since 2006, exhibited extensively in Australia, and maintains a connection with the Pacific Northwest.

Masayuki Nagase - Site Specific Sculpture

Granite sculptor and public artist Yuki Nagase will demonstrate his approach to imbuing forms with the rhythms of nature. Born in Kyoto, Japan, Yuki is based in Berkeley, California and has sculpted projects in the US, Canada, Chile, and multiple countries in Europe. He specializes in designing site-specific projects that integrate and unify their surrounding environments.



Elegance in Jade - Deborah Wilson

Acclaimed contemporary jade and granite sculptor Deborah Wilson, from British Columbia, will be offering a workshop in jade. Her work reflects her love for organic forms and her ongoing interest in utilizing the characteristics that define this "stone of heaven."

Our jade tent has all the tools you need to create small scale sculptures and pendants. A selection of jade will be available for purchase. Class limit is 10 people, so register early and watch your confirmation for details.

***Register by May 31st to save \$100 on full-time registration with the Members' Early Bird Discount!**

Register online or mail the attached form with payment to NWSSA, Attn: Cyra Jane & Ben Mefford Symposium Co-Directors, PO Box 27364 Seattle, WA 98165

Becoming a member is easy! Just check "add membership" below to claim the discount and receive member benefits like invitations to workshops and shows and our quarterly Sculpture Northwest Journal.

Full Time, Lodge/Cabin*	\$1,220/* 1,120
Full Time, Tent/Camper	\$1,095/ 995
Day Rate, Lodge	# days x \$200
Day Rate, Tent/Camper	# days x \$180

I will attend these dates: _____

Name: _____

Address: _____

City: _____ State/Prov. _____

Zip/PC: _____ Phone: _____

☐ Check if this information has changed

Preference for Lodge or Cabin _____

Preferred Roommate(s): _____

Special Diet: _____ T-Shirt Size _____

- ☐ Check to participate in the jade workshop (on-site materials fee)
- ☐ Check to participate in the beginner's workshop
- ☐ Check to participate in the intermediate power tool workshop
- ☐ Check to add on your annual membership for \$50

Make your checks payable to NWSSA or pay by Visa or Mastercard.

Card # _____ Exp Date _____

Signature _____

* Limited single rooms are available for full time attendees only, please add \$200, will refund if not available. No guarantee that couples will room together, but please inquire. Charges apply.



OUR VENDORS

Neolithic Stone - Wide range of quality stones & tools from around the world
Blind Stream Stoneworks - Honeycomb Calcite from Hanna, Utah
Bronzestone - Various sizes of polished granite bases
BB Industries - A selection of tools and accessories for cutting hard stone
Carolyn Anderson - Extreme bodywork massage therapy
Richard Secrist - Rejuvenating deep tissue massage
Georgia Peterson - Restorative, deep work massage for stressed muscles

FIELD MENTORS

Our members have years of experience working with all types of stone. If you desire individual guidance or support, field mentors are available every day to share tips and techniques that will help you on your way.

FINANCIAL AID

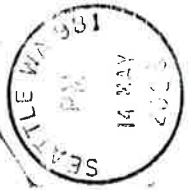
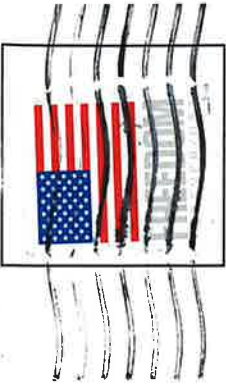
Thanks to our generous members and the Thursday Auction, funds are available for both work-study positions and scholarships. For information, contact Symposium Directors Cyra Jane sirenicity@gmail.com or Ben Mefford sculptmefford@gmail.com

SCHEDULE (SUBJECT TO CHANGE)

Workshop	Instructor	Days
A Splash of Color	Cliff Fragua	Sun-Sat
Vessels in Hard Stone	Senden Blackwood	Sun-Sat
Site Specific Sculpture	Masayuki Nagase	Sun-Sat
Elegance in Jade	Deborah Wilson	Mon-Fri
Beginner's Stone Carving	Tamara Buchanan	Sun-Sat
Intermediate Power Tools	Oliver Harwood & Ben Kimura	Sun-Sat
Event	Facilitator	Evening
Artist Presentations	Guest Artists	Sat-Tues
General Assembly Meeting	Tamara Buchanan	Wed
Live Auction	Al Mangold	Thurs
Dance Party!	You and Me and the DJ	Fri
Outdoor Sculpture Show		Sat 12-4 PM

SPECIAL THANKS

4Culture, Star Rentals, the amazing Staff at Pilgrim Firs



NWSSA
PO Box 27364
Seattle, WA 98165
CarveStone.org

City of Bellevue Arts Commission
450 110th Avenue NE
Bellevue, WA 98004

STONE
SCULPTURE
SHOW

SATURDAY
JULY
19TH

12:00 PM- 4:00 PM

Pilgrim Firs Camp
3318 SW Lake Flora Rd
Port Orchard, WA 98367

FREE Event!

NorthWest Stone Sculptors Association
WWW.CARVESTONE.ORG

"Breathe" by Tamara Buchanan



37TH ANNUAL
STONE CARVING
SYMPOSIUM

JULY 12-20TH AT CAMP PILGRIM FIRS
IN PORT ORCHARD, WA