



City of Bellevue

# Parks Funding Strategy

Michael Shiosaki

Director, Parks & Community Services

**March 7, 2022**



# AGENDA



Background/History



Parks & Open Space System Plan Update



Capital Project Needs



Needs vs. Revenues



Funding Options



Next Steps

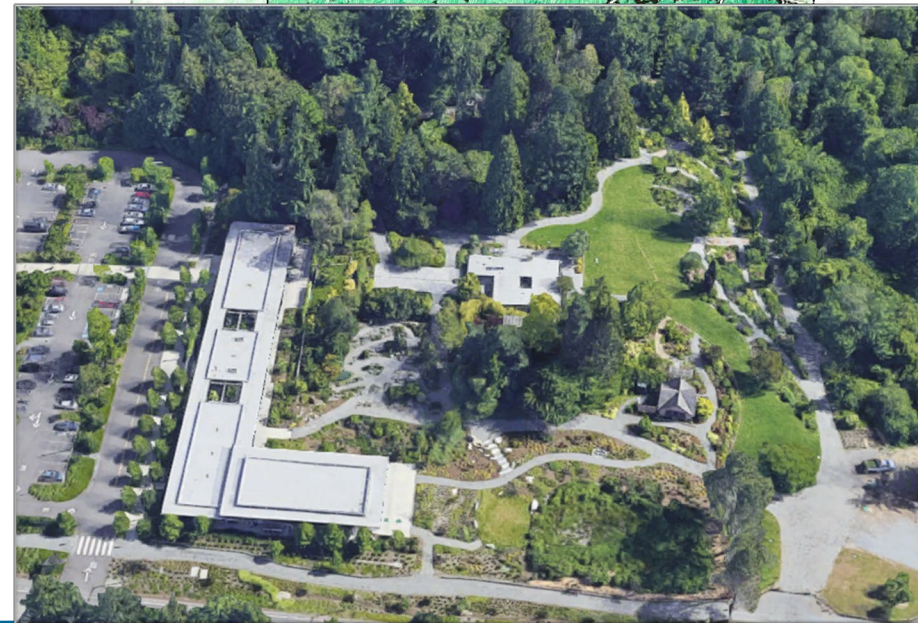
# Background and History - Part I

## Recipe for Success

- Compelling vision
- Master plans
- Ongoing Incremental Investment
- City's growth and increased parks use

## Voter Initiatives

- Ten measures passed in 50+ years



# Background and History - Part II

## Current Parks & Natural Areas Levy

- Passed in 2008, expires in 2028.
- Notable project completions: Downtown Park –Completing the Circle, Surrey Downs Park, Botanical Garden Visitors Center and Ravine Garden, BYT, Lake Sammamish acquisitions.
- Two projects to be completed.





# **Parks & Open Space System Plan Update**

- **2022 Update nearing completion**
- **Park Board review and recommendation complete**
- **Robust public outreach**

# Parks & Open Space System Plan update- Public Outreach

## Engaging Bellevue Hub

- 140 ideas were shared

## Outreach to:

- Boards and commissions
- Neighborhood groups
- Community groups

## Publications, social media Surveys

Home » Input for Parks and Open Spaces!

## Input for Parks and Open Spaces!


[f](#) [t](#) [in](#) [e](#)

**Do you want to help shape the future of Bellevue's parks and open space?** Bellevue Parks and Community Services is updating the long-range Parks and Open Space System Plan and we want to hear from you.

Many of the Bellevue parks and trails we use and treasure today started as ideas in the parks plan! The parks plan provides guidance on all aspects of the parks, trails, and open space system throughout Bellevue, including areas for recreation and play, undeveloped spaces for exploring the natural world, trails that connect communities, and more. The parks plan provides direction specifically on the acquisition, development, and management of parks and open space.

- What do you like about the parks system and what might you like to see more of?
- How can we provide safer and expanded access to parks and trails?
- What can be done to ensure that we are reaching all populations in Bellevue?

**Please take 5 minutes and share your input for the Parks and Open Space System plan!** The survey will be available through November 8th. It is available in Chinese (simplified and traditional), English, Korean, Russian, Spanish, and Vietnamese.

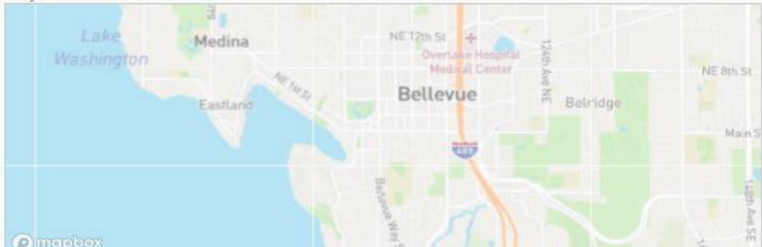


[PARKS AND OPEN SPACE SYSTEM SURVEY](#)

**MAP** **IDEAS**

### Map Your Idea!

4 days



mapbox

# Public Outreach - Surveys

## Statistically valid (ABS) resident survey

- 465 responses
- 78% conducted online, 22% conducted by phone
- 5% completed in a language other than English

## Open park user survey

- 383 responses
- All online
- 1% completed in a language other than English

Neighborhood	Address Based Sample	Open Survey	Total
Bel-Red	7	6	13
Bridle Trails	31	17	48
Cougar Mtn	39	29	68
Crossroads	26	18	42
Downtown	89	48	137
Eastgate	17	55	72
Factoria	9	5	14
Lake Hills	46	55	101
Newport	25	20	45
NE Bellevue	29	17	46
NW Bellevue	35	11	46
Somerset	23	25	48
W Bellevue	29	35	64
West Lk			
Sammamish	21	19	40
Wilburton	18	15	33
Woodridge	21	10	31
<b>Total by source</b>	<b>465</b>	<b>383</b>	<b>848</b>



# Survey Data

## Use of Park & Recreation Facilities

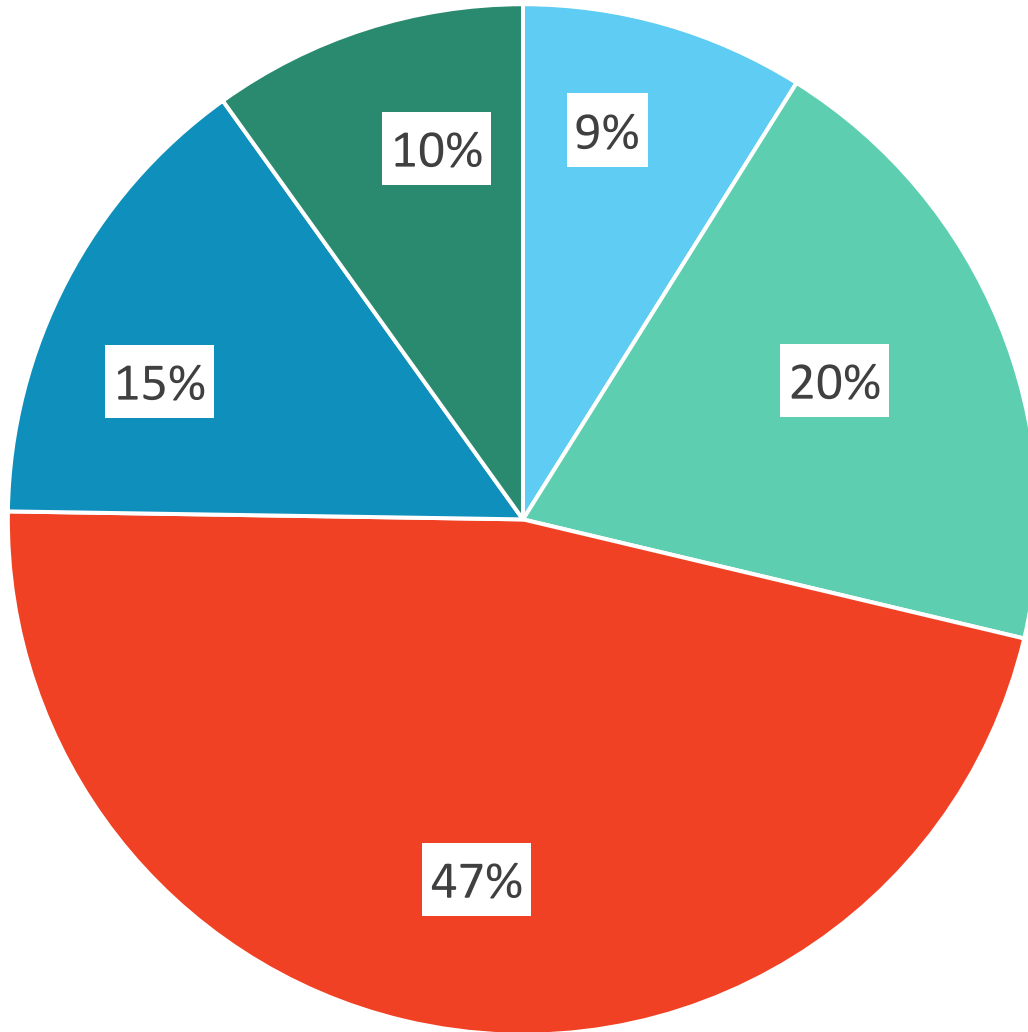
Type of Resource	Any in Household / Year
Trail through natural areas	79%
Paved or gravel trails	79%
Community beach, waterfront park, or boat launch	67%
Parks with display gardens	63%
Open areas for unstructured play	60%
Outdoor sports fields or courts	45%
Playgrounds	44%
Community / visitor centers	31%
Indoor sports facilities / fitness centers	24%
Designated off-leash dog areas	22%
Swimming pools	14%
Other	2%

# Survey Data

## Reasons for Visiting Parks & Recreation Facilities or Resources

Reason	Any in Household
Enjoy / experience nature and open spaces	74%
Relax	67%
Exercise outdoors / engage in outdoor sports	64%
Spend time with family & friends	64%
Participation in unstructured recreation (ex. playground)	32%
Exercise in an indoor facility / engage in indoor sports	20%
Participation in structured recreation (ex. sports)	19%
Attend / participate in a cultural or community event	17%
Participate in a class for fitness, education, personal enrichment	12%
Other reason	8%

# Ten Year Focus



- Completely focus on Developing and Improving Currently owned parks
- Mostly focus on Developing and improving currently owned parks
- Focus on both equally
- Mostly focus on Park land and natural areas
- Completely focus on Acquiring new park land and natural areas

# Parks Development Priorities

Preferences ranked in descending order for development of Parks & Recreation elements

All Respondents
Trails through natural areas
Paved or gravel trails
Beach, waterfront park, or boat launch
Unstructured play / picnic areas
Park with display gardens
Outdoor sports field or sport court
Swimming pool
Indoor sports facility or fitness center

# Public Outreach – Common themes

## Common input

- Parks are well maintained and important to the quality of life.
- Protect natural resources & open space.
- Expand local trail connections and wayfinding.
- Parks needed in specific neighborhoods, particularly high growth areas and those with minimal existing access.
- Design parks facilities for interaction and gathering.
- Consider a variety of facilities in our parks, including those for emerging sports
- Provide relevant facilities for diverse populations.
- Preserve history and cultural resources.



# Capital Project Needs



# The Needs

## Capital Project Areas - Part 1

### Open Space, Greenways, Wildlife Corridors & Trails

- Open space acquisition such as at Coal Creek
- Mountains to Sound Greenway trail connections
- Lake to Lake Greenway trails
- Eastrail development

### Park Facilities

- Add neighborhood parks in Eastgate, Factoria, Bel-Red
- Develop existing sites in Bel-Red, Downtown
- Continue phased development at Botanical Garden, Crossroads, Wilburton

### Active Recreation Facilities

- New Aquatics facility
- Sports courts, sports field improvements
- Off-Leash Dog Areas

# The Needs

## Capital Project Areas - Part 2

### Urban Park Systems

- Park acquisition and development - Downtown, Bel-Red, Eastgate, Wilburton

### Waterfront Access

- Lake Sammamish park development
- Meydenbauer Bay Park -future phases
- Waterfront park renovation

### Partnership Opportunities

- Other public, private and non-profit agencies

### Historic Cultural and Art Resources

- Renovation of historic structures
- Public art in parks



# Needs Compared with Revenues



# Capital Objectives vs. Potential Revenues

- 20 year plan
- Rough order of Magnitude cost by category based on 2022 dollars

Capital Project Objectives (in Millions):	
Open Space, Greenways, Wildlife Corridors & Trails	
Park Facilities	
Active Recreation Facilities	
Urban Parks Systems	
Waterfront Access	
Partnership Opportunities	
Renovation & Refurbishments	
<b>Projected 20-Yr Capital Need</b>	<b>\$880</b>
<b>Projected 20-Yr Revenues</b>	<b>\$300</b>
<b>Funding Gap</b>	<b>(\$580)</b>

# Funding Sources

## In addition to REET, current funding sources include:

- 2008 Parks & Natural Areas Levy
- 2019 King County Parks Levy
- User Fees/Property Rents – e.g., Parks Enterprise, Land Purchase Revolving Fund, Marina
- Federal, State, and Local Grants -competitive grants that require local match
- King County Conservation Futures Tax/CFT - matching fund for open space acquisitions
- Partnerships -e.g., Botanical Garden Society, Boys & Girls Club
- Donations
- Developer Incentives and Mitigation Fees

# Funding Options

## Additional potential funding options:

- Future Voter-approved Initiatives (Levies or Bonds)
  - Real Estate Transactions (sale or swap of City-owned land)
  - Washington Park and Recreation Special Districts (Metropolitan Park District)
  - Non-voter-approved bonds/Councilmanic Bonds
  - Impact Fees
  - New Tax Sources
- 
- Rely on existing REET funding and current funding sources only.

# Next Steps

- Council Feedback
- Additional information requested

