

This packet includes proposed amendments to Arts and Culture policies in the BelRed Subarea Plan.

Key			
	Repealed Policy		New Policy
	Modified Policy		Retained Policy

Table of Contents

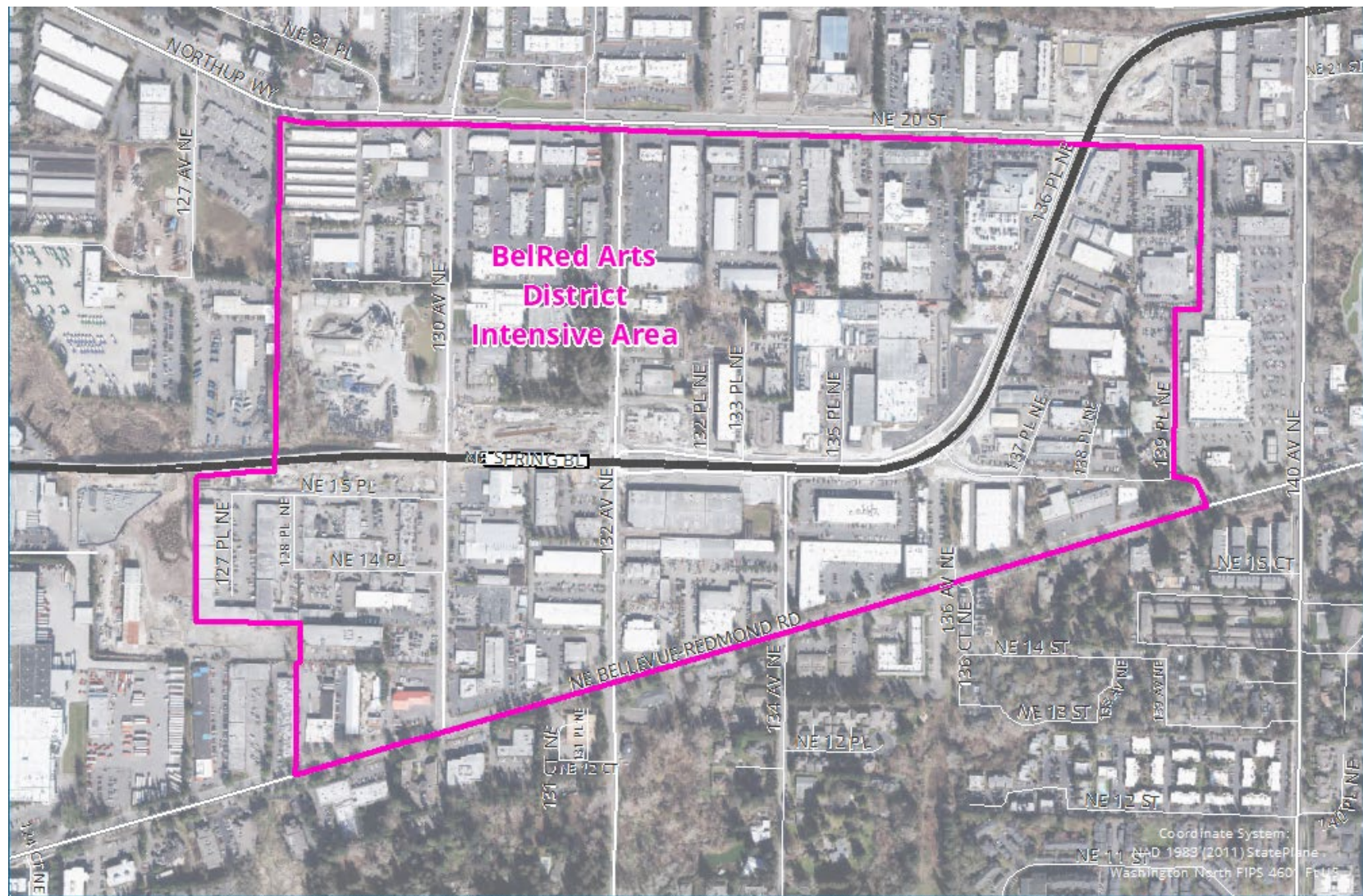
Arts, Culture, and Creativity.....	2
Implementation.....	4

DRAFT

New Number	Old Number	Proposed Policy Amendment	Reason for Change/CPP/Note
Arts, Culture, and Creativity			
Goal: To build and sustain BelRed as a destination for the creative and innovative communities, anchored by the BelRed Arts District with a wealth of engaging and affordable arts and cultural spaces, events and programs, creative businesses, and community-serving organizations.			
Organization			
S-BR-66		Grow the creative capacity of the Arts District by providing operational support and educational resources to organizations supporting its growth, funding, and management.	Note: Added to support community based organizations.
Visibility			
S-BR-67	S-BR-46	Provide funding for a wide range of public art projects and events that explore the intersection of art and technology, draw attention to the Arts District, spark creative placemaking, and reinforce the identity of BelRed as a cutting-edge creative destination.	Note: Updated to clarify policy intent.
S-BR-68	S-BR-47	Integrate public art, performance, and/or creative activity spaces that reflect BelRed’s creative character, heritage, and ecology into public and publicly accessible indoor and outdoor spaces, and building and wall facades, especially those adjacent to and visible from streets and transit corridors, and in new and existing street infrastructure, transit facilities and parks.	Note: Updated to clarify policy intent and be more inclusive of all arts and cultural needs.

New Number	Old Number	Proposed Policy Amendment	Reason for Change/CPP/Note
S-BR-69	S-BR-50	Invest in technology-based art that fosters creative experimentation, enhances the public experience, and reinforces the identity of the Arts District as a cutting-edge creative destination.	Note: Updated to clarify terminology and policy intent. Removed discussion; elements of which may be incorporated into preceding narrative.
Creative Space			
S-BR-70	S-BR-44	Secure long-term affordable arts and cultural space in the Arts District through development incentives, grants for facility upgrades, direct investment, and initiatives that serve as a pathway to facility ownership.	Note: Updated to clarify policy intent.
S-BR-71	S-BR-45	Designate the area shown in Figure S-BR.2 as the BelRed Arts District Intensive Area to prioritize incentives for the provision of affordable space for arts and cultural uses.	Note: Updated to clarify and expand policy intent. Removed discussion; elements of which may be incorporated into preceding narrative.
S-BR-72	S-BR-48	Promote the development of flexible and affordable artist live/work and work/live units through provisions that lower costs, enable conversion of existing buildings, and allow for arts-focused retail and artisanal manufacturing.	Note: Updated to clarify policy intent.
	S-BR-49		Note: Removed outdated policy.
S-BR-73		Stimulate the development of affordable artist housing through public-private partnerships within the BelRed Arts District Intensive Area.	Note: Added to support provision of space for affordable artist housing.

New Number	Old Number	Proposed Policy Amendment	Reason for Change/CPP/Note
Community Connection			
S-BR-74		Develop a dedicated central meeting space in the Arts District for events, classes, programs, and other arts uses.	Note: Added to support community connection.
S-BR-75		Support programs and events that facilitate collaboration between artists, other creatives, and the broader community to reinforce BelRed’s identity as an innovative creative destination.	Note: Added to support community connection.
S-BR-76		Provide for infrastructure in public and publicly accessible spaces such as electrical hookup, stages, and lighting to support artistic performance and events.	Note: Added to support community connection.
S-BR-77		Support the proliferation of arts and community events by providing grants, simplifying street closure and event permitting, lowering fees, and other initiatives.	Note: Added to support community connection.
Implementation			
Goal: To ensure an ongoing and effective process, with the right tools available, to result in effective implementation of the BelRed subarea vision.			
	S-BR-84		Note: Removed action, which can be included in a functional plan rather than in a subarea policy plan.



 **BelRed Arts District Intensive Area**

 Arts District Intensive Area  East Link Station  East Link Route

 Disclaimer: The City of Bellevue does not guarantee that the information on this map is accurate or complete. This data is provided on an "as is" basis and disclaims all warranties.

Source: City of Bellevue

Figure 1. BelRed Arts District Intensive Area.