



Eastgate Housing Campus

Implementation Update

Bianca Siegl | City Manager's Office
May 21, 2024



Information

Overview of operations at
the Eastgate Housing
Campus

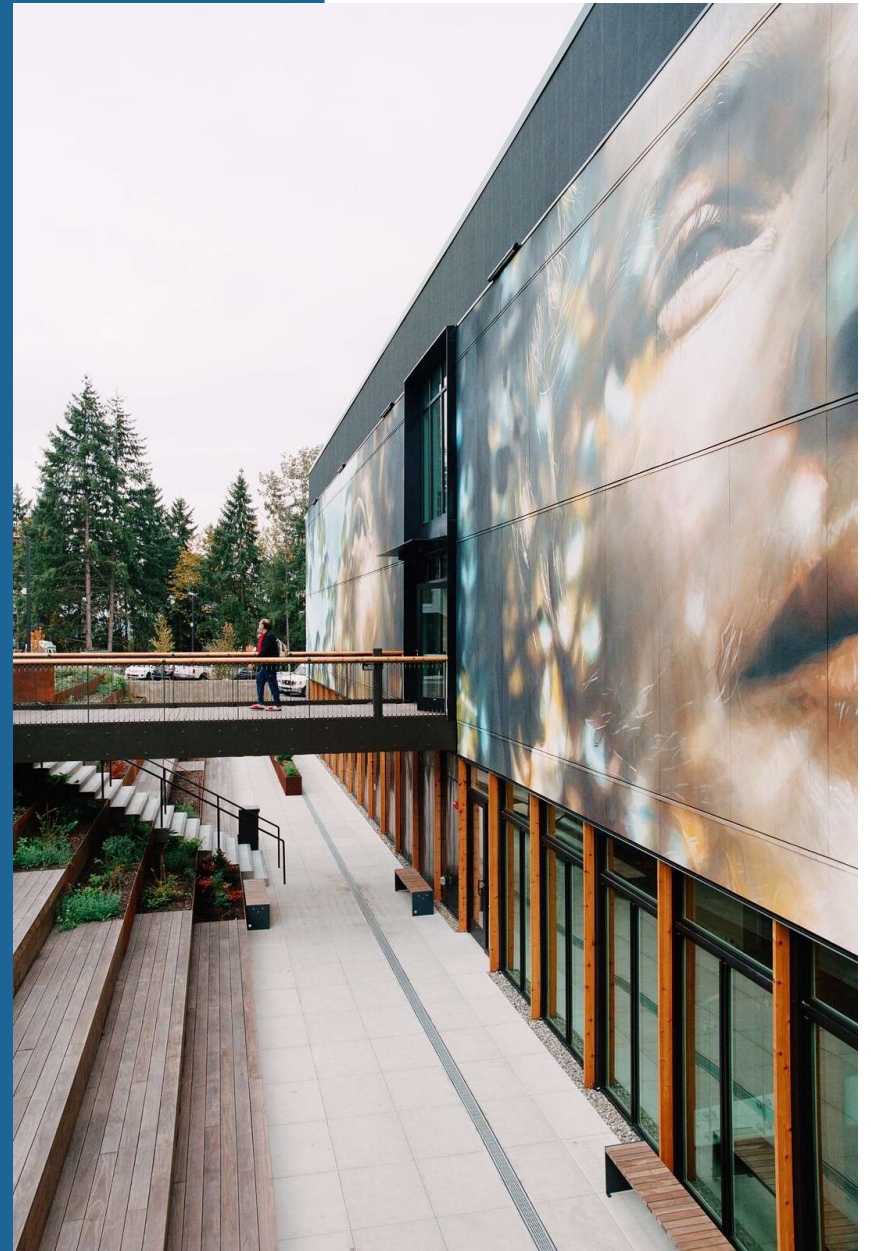


Photo Credit: Dwell Magazine



Agenda

1. Background
2. PorchLight Men's Shelter
3. Plymouth Crossing
4. Polaris
5. Public Safety and Community





Background

- Council Priorities and 2014 Diversity Advantage Plan directed the city to “work toward an Eastside solution for a permanent location for a men’s homeless shelter”
- PorchLight, Plymouth Housing, and Inland Group partnered to develop the site
- Providing spectrum of shelter, housing, and services in one location
- Extensive community engagement process; Good Neighbor Agreement Advisory Committee for shelter

PorchLight Men's Shelter

- Shelter opened June 2023
- Served more than 450 individuals since opening at Eastgate
- Enhanced shelter services
- Implementing Good Neighbor Agreement; Community Advisory Board
- Monitoring “magnet areas” and trash cleanup in area
- Community partnerships



Photo credit: Dwell Magazine

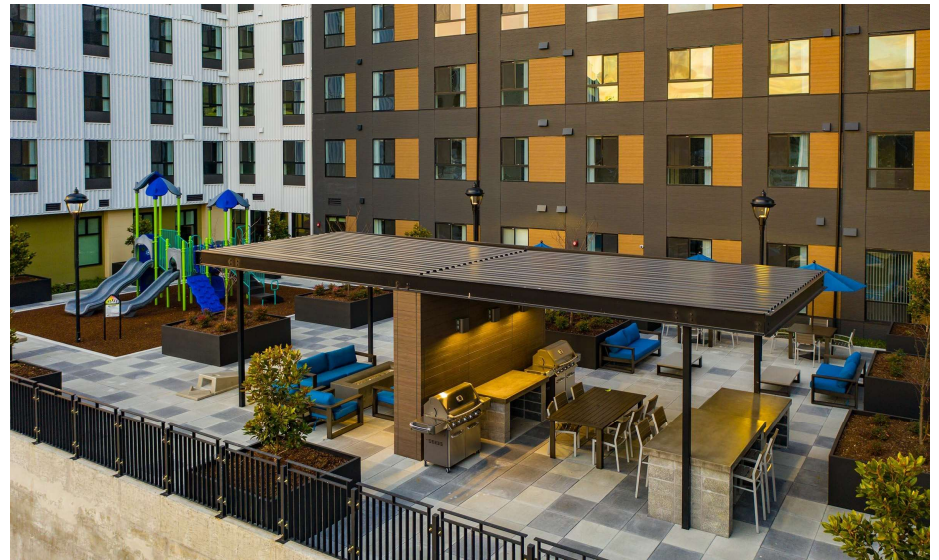
Plymouth Crossing

- 92 units of permanent supportive housing
- Behavioral health clinic and nursing on site, plus case management services
- 24/7 staffing
- High resident engagement in services and low level of incidents
- 53% of units were filled via local referrals
- Community partnerships



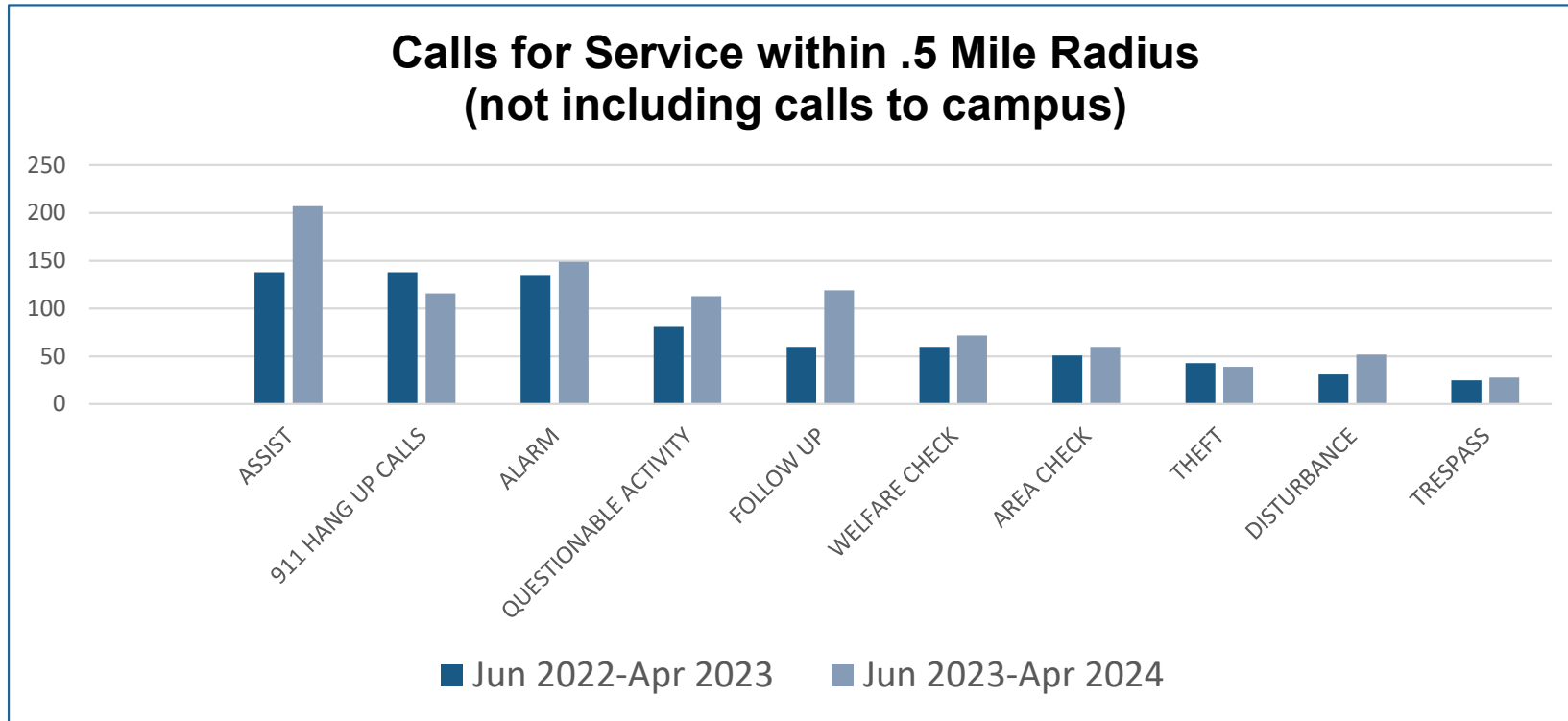
Polaris Eastgate

- 360 units of affordable workforce housing
- Over 96% of units leased
- Phase 1 occupied; Phase 2 available in June
- YMCA early learning center
- Worked with BSD and local agencies during leasing process





Public Safety and Community



June 2023-April 2024 Calls for Service
PorchLight: 289 Plymouth Crossing: 120
** CCAT responded to approx. 25% of calls*



Information

Overview of operations at
the Eastgate Housing
Campus

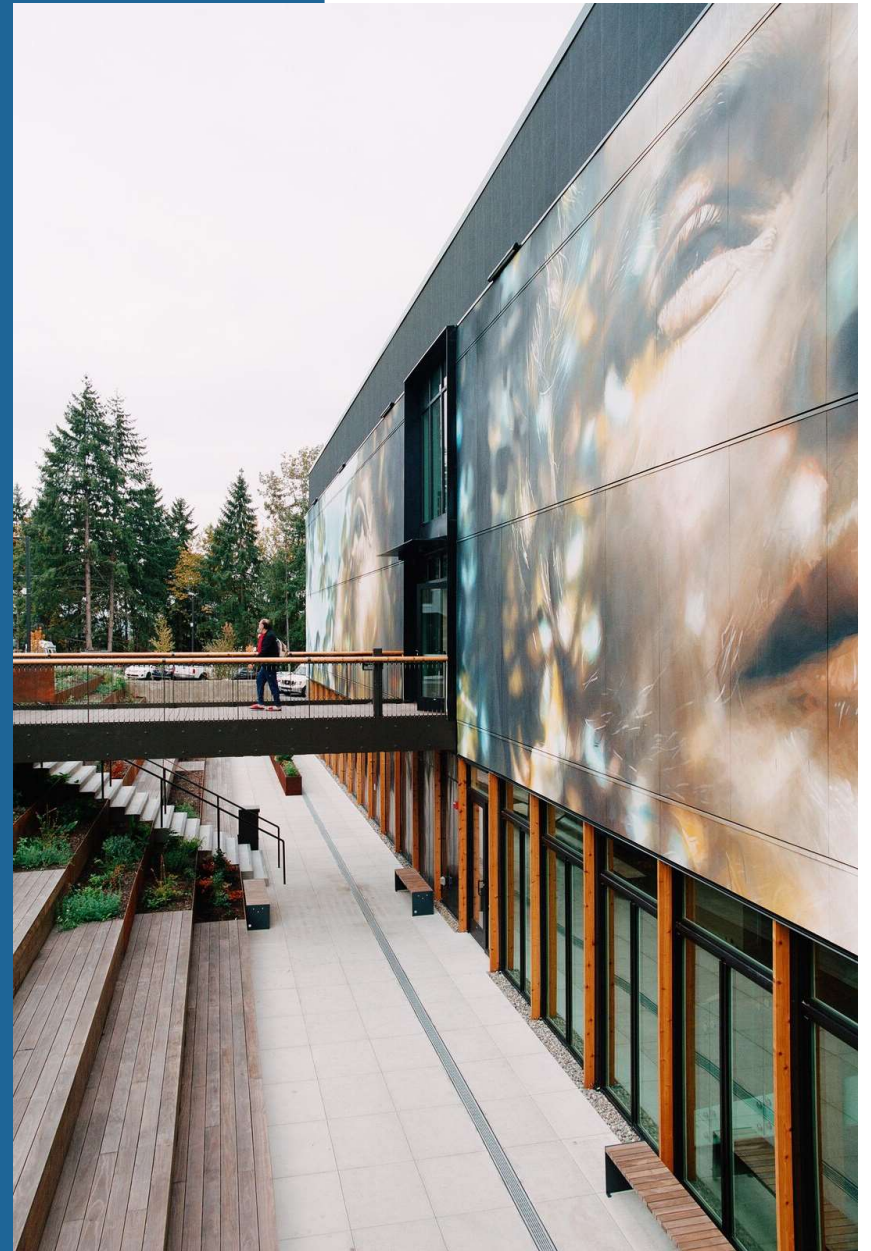


Photo Credit: Dwell Magazine