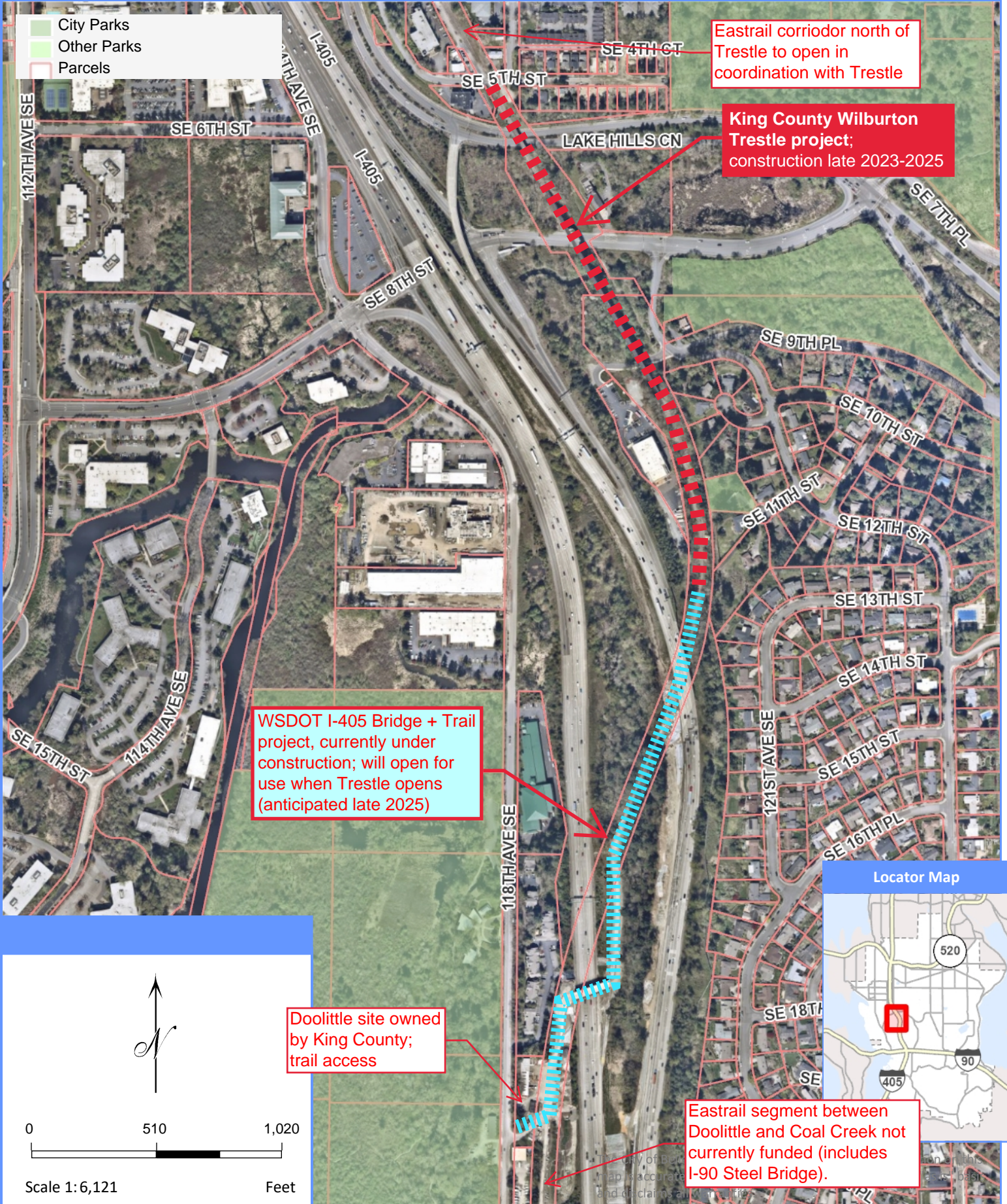




# Wilburton Trestle Project Area



- City Parks
- Other Parks
- Parcels

Eastrail corridor north of Trestle to open in coordination with Trestle

King County Wilburton Trestle project; construction late 2023-2025

WSDOT I-405 Bridge + Trail project, currently under construction; will open for use when Trestle opens (anticipated late 2025)

Doolittle site owned by King County; trail access

Eastrail segment between Doolittle and Coal Creek not currently funded (includes I-90 Steel Bridge).

